

PLAN No 21

HARLAND & WOLF
LIMITED
2 JUL 1953
Governing Shipbuilding Works
CLASSIFICATION

No 1454 M.V. BLANDFORD.

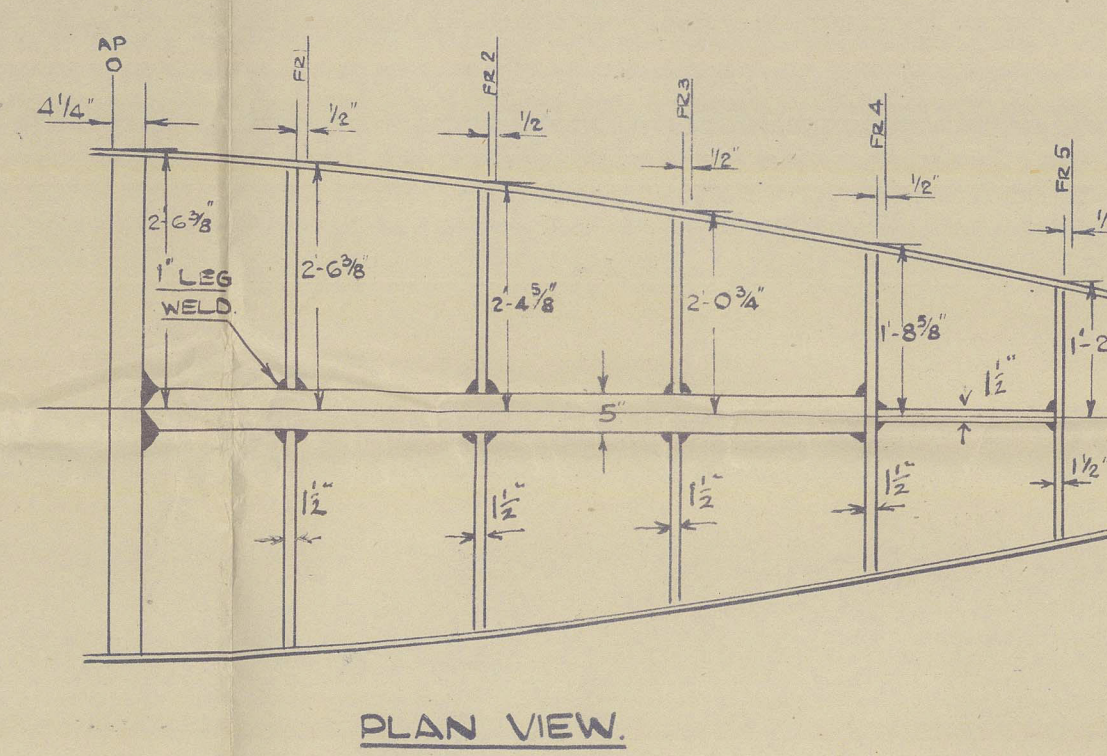
FABRICATED STERNFRAME.

SCALE:- 1/2" = 1 FOOT.

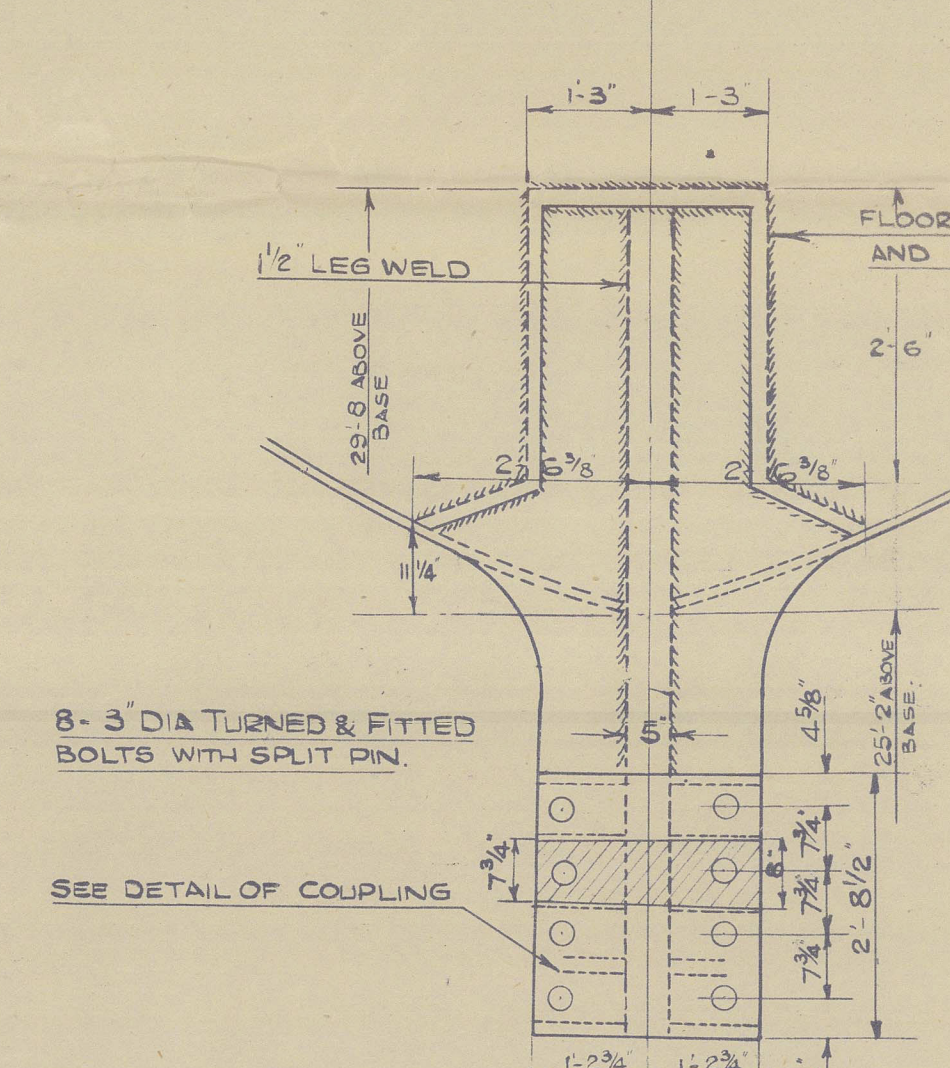
SOLEPIECE, BACKPOST AND RINGS IN BOSS OF FORGED STEEL.
TO LLOYDS TESTS AND REQUIREMENTS.

STERNFRAME TO BE FABRICATED AND FINISH MACHINED.
DIMENSIONS ON THIS DRAWING TO BE CAREFULLY WORKED TO.
FULL SIZE SECTIONS OF SOLEPIECE TO BE WORKED TO IN
CONJUNCTION WITH THIS DRAWING.
THE FOLLOWING PARTS (TINTED RED) TO BE MACHINED:-
BORE & END OF BOSS, COUPLING FACES & KEYWAYS AT UPPER END OF
BACKPOST, BORE OF SOLEPIECE TO TAKE BACKPOST & M. LINERS ON BACKPOST.

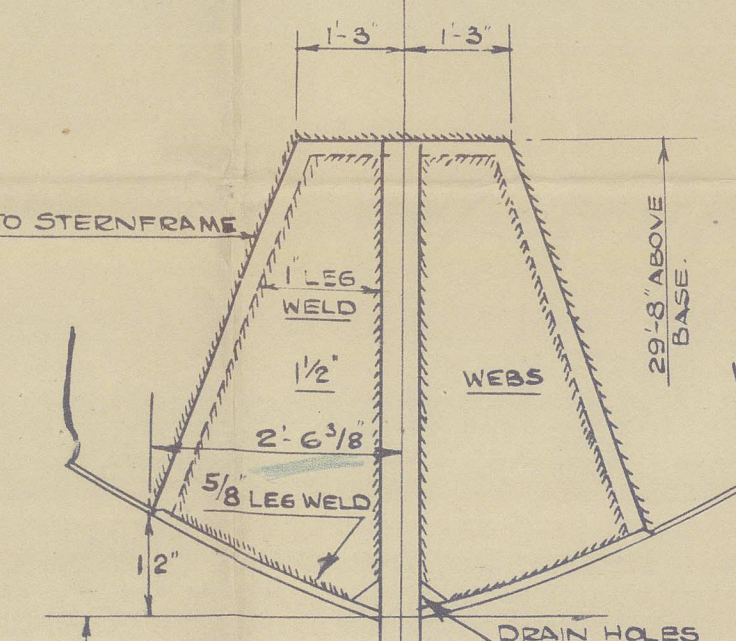
STERNFRAME TO BE ANNEALED AFTER WELDING.
ANNEALING TEMPERATURE TO BE 600° F. MINIMUM.



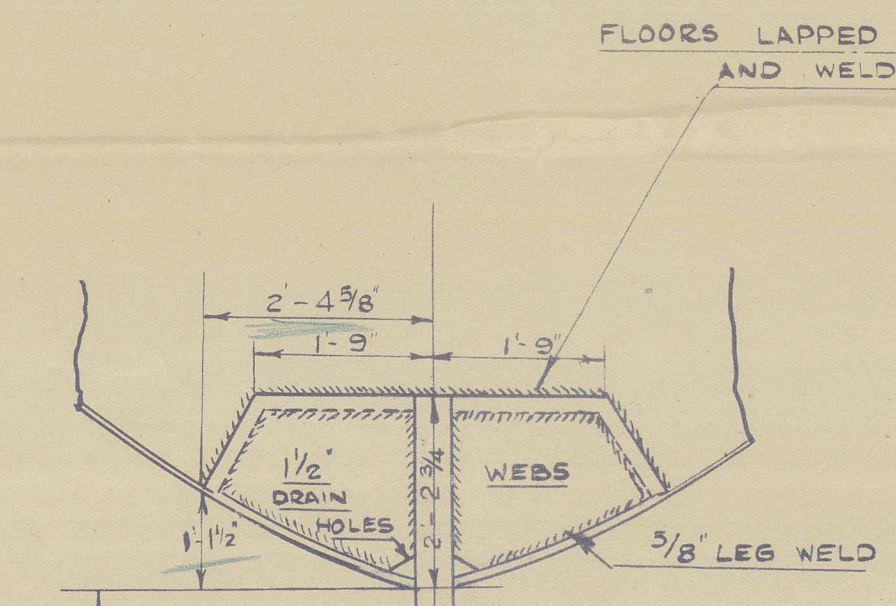
PLAN VIEW



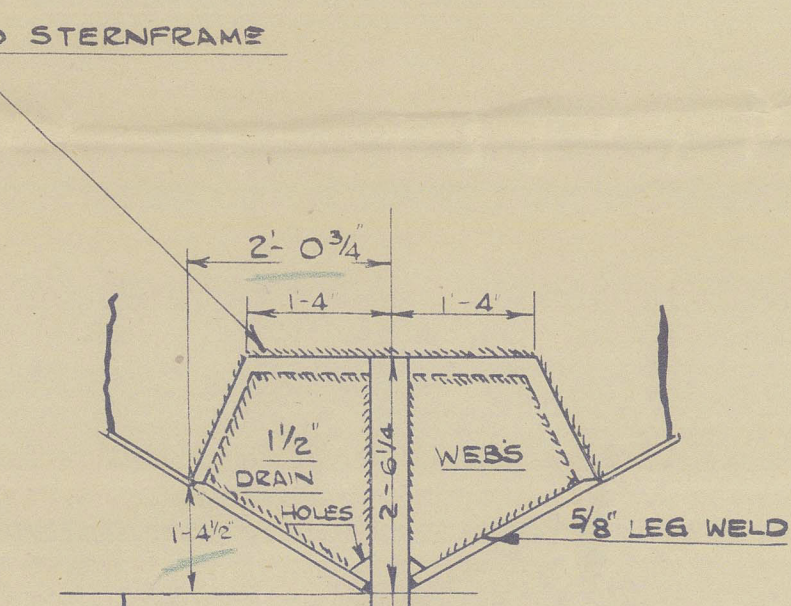
SECTION AT A.D.
FRAME O



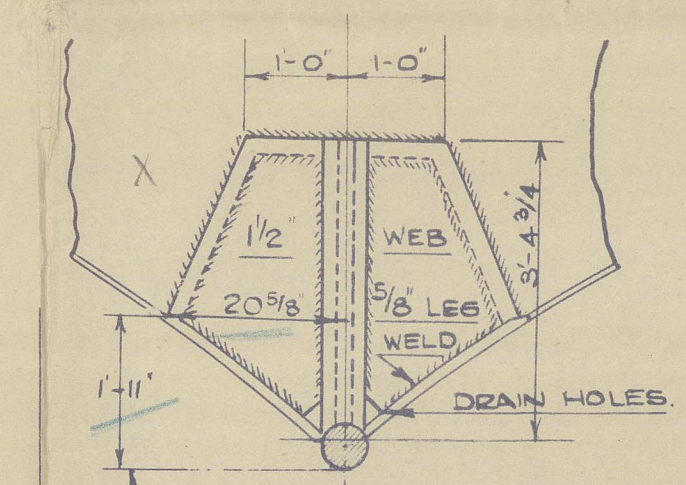
SECTION AT FR 1



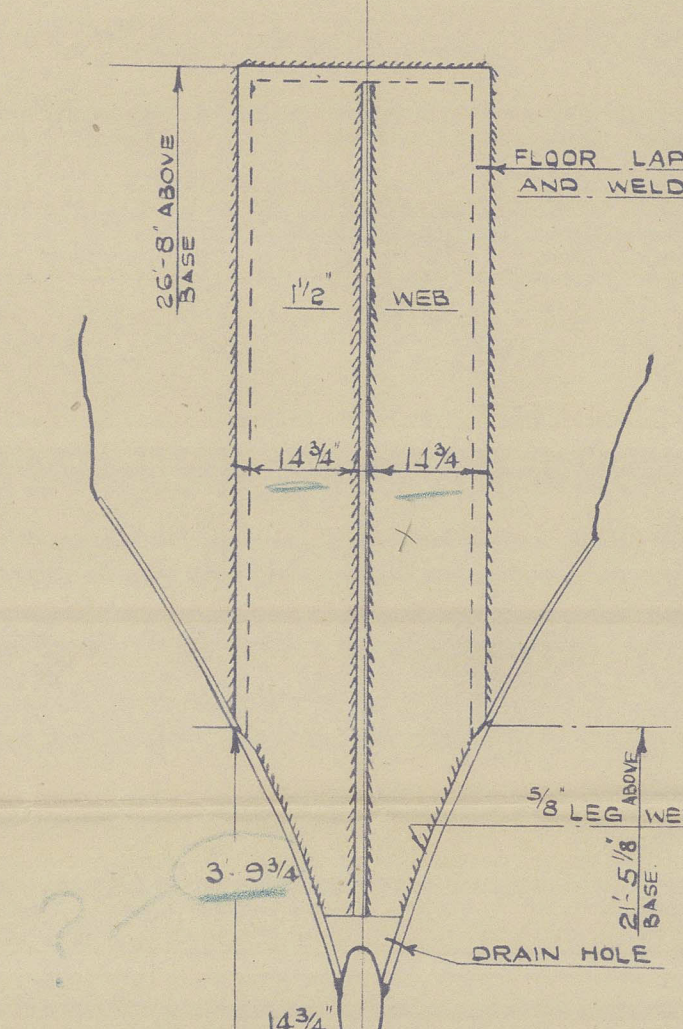
SECTION AT FR 2



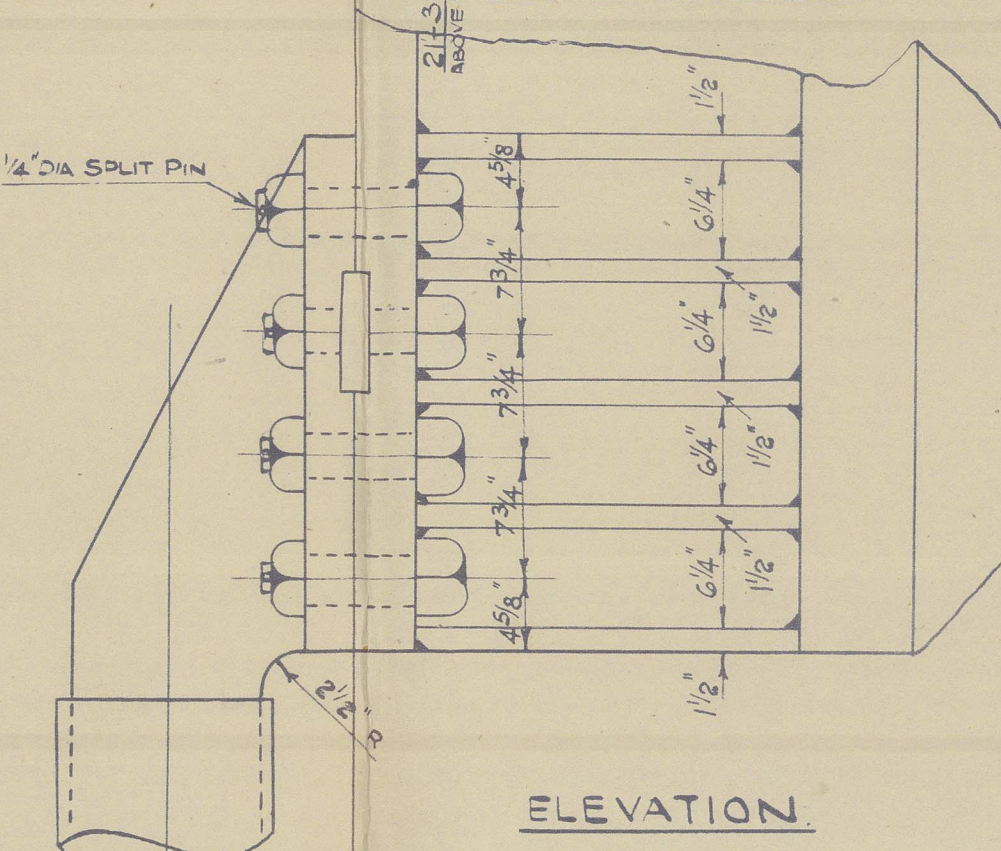
SECTION AT FR 3



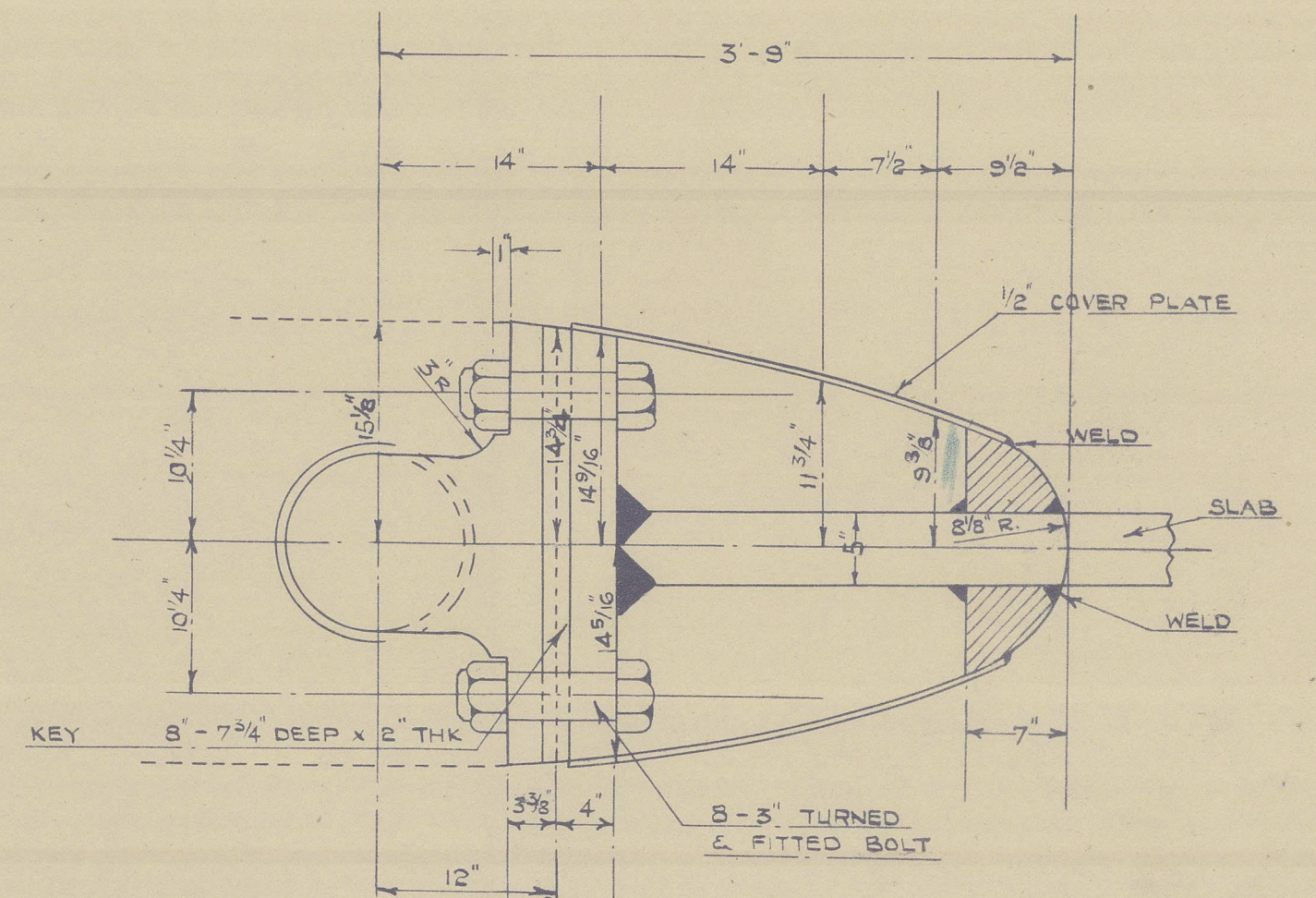
SECTION AT FR 4



SECTION AT FR 5

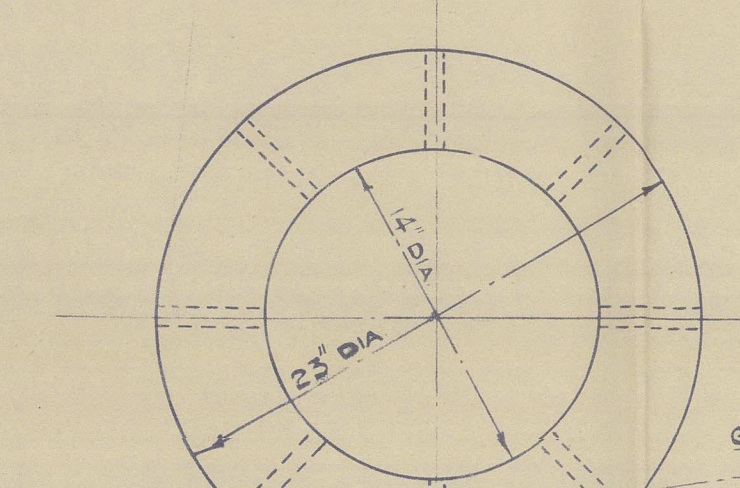


ELEVATION

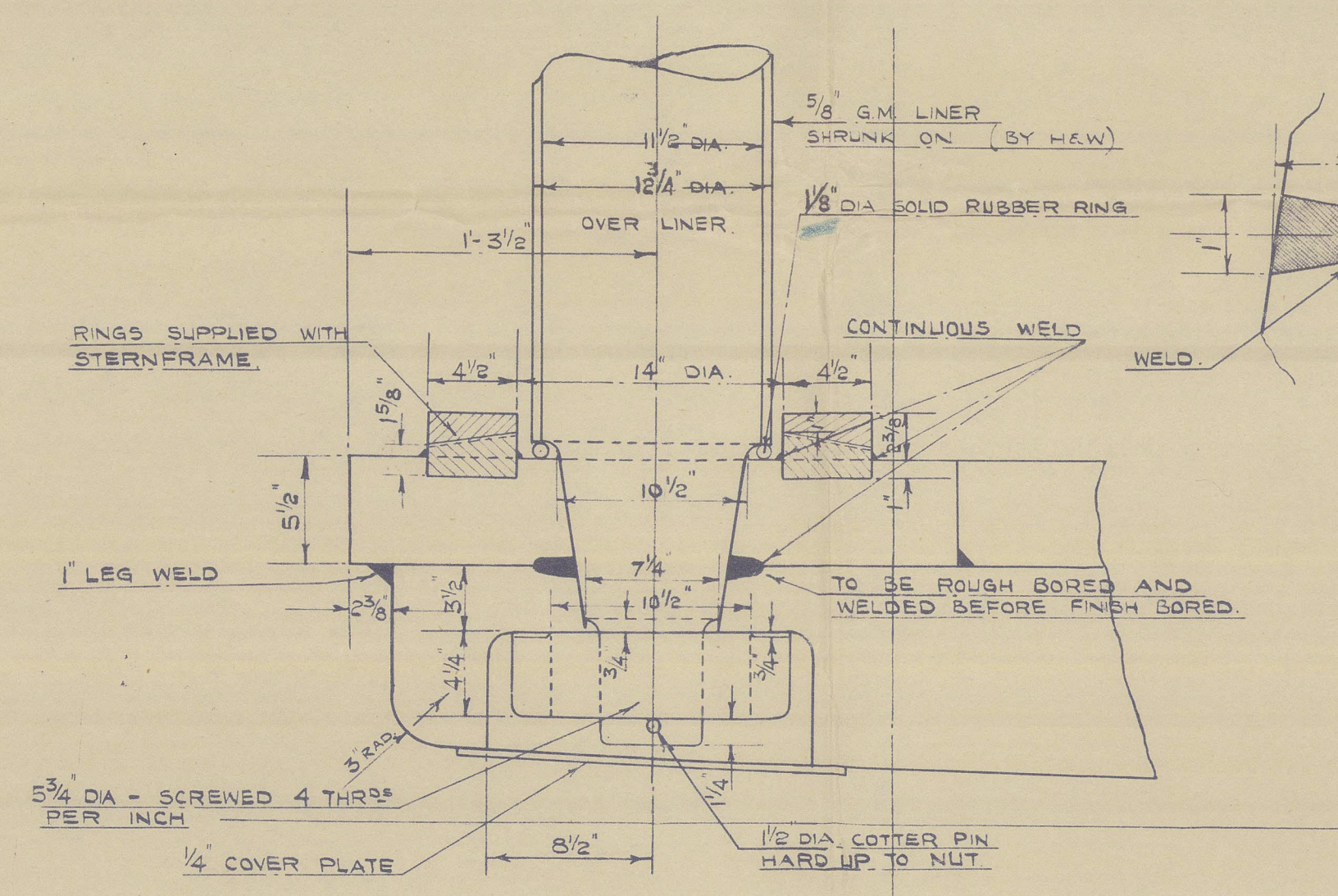


SECTION

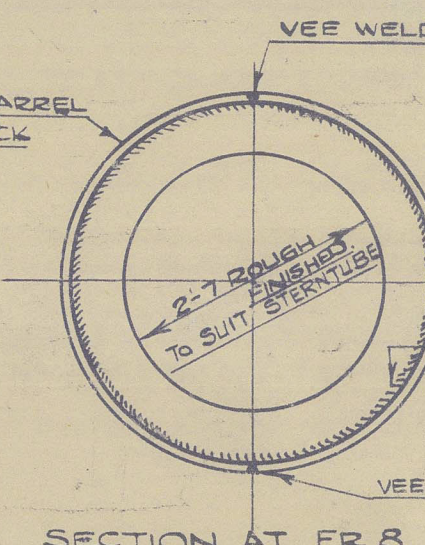
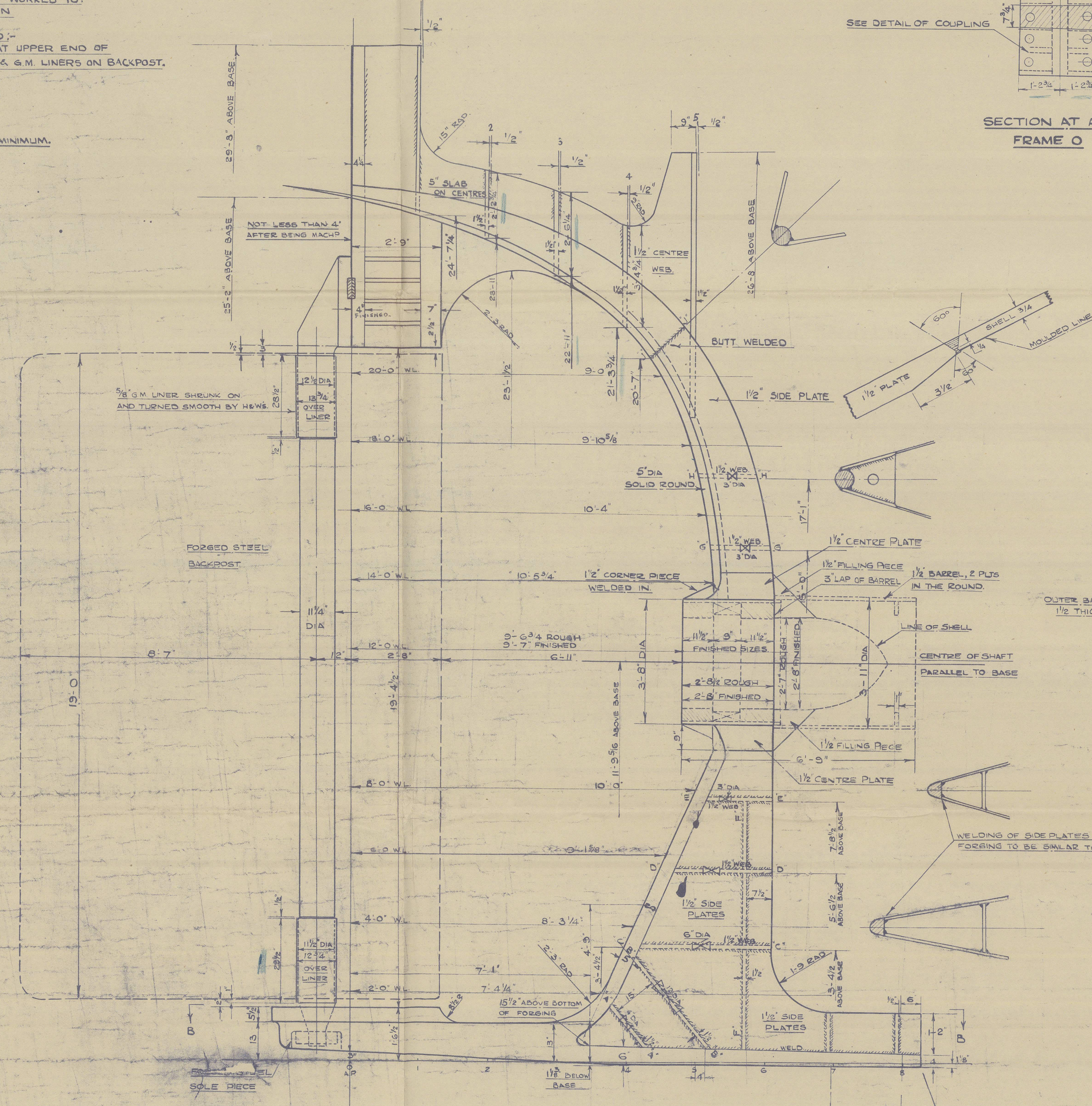
DETAIL AT UPPER END OF BACKPOST.
SCALE:- 1/2" = ONE FOOT.



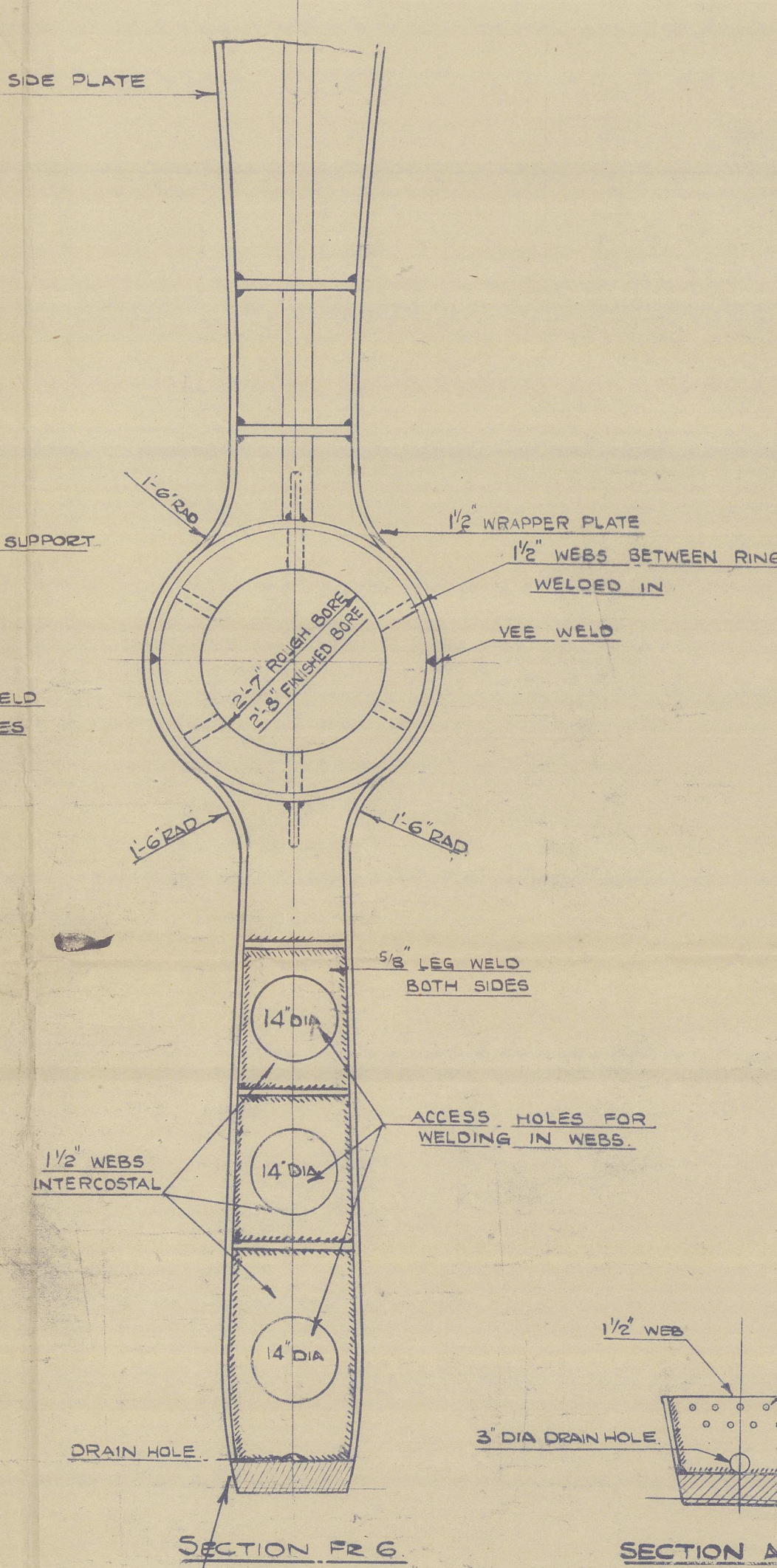
DETAIL OF BEARING RINGS
UPPER RING - HARD STEEL
LOWER RING - MILD STEEL



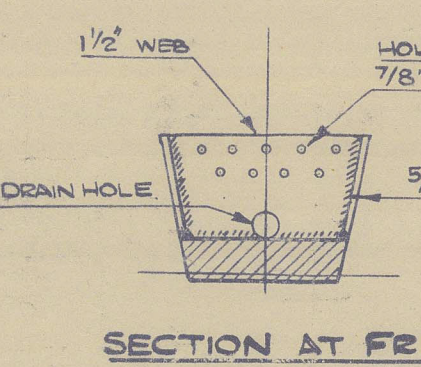
DETAIL OF BACKPOST CONNECTION TO SOLEPIECE
SCALE:- 1/2" = ONE FOOT.



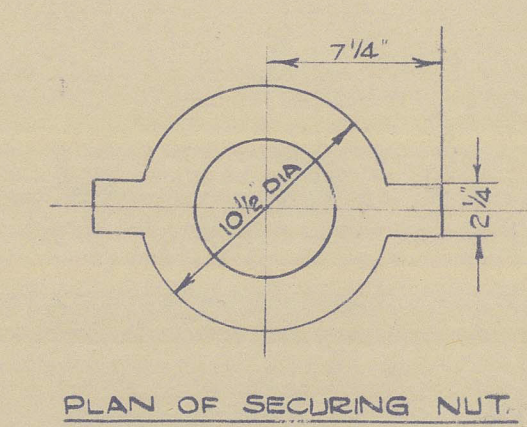
SECTION AT FR 6



SECTION FR 6



SECTION AT FR 7



PLAN OF SECURING NUT

APPROVED
LLOYDS REGISTER OF SHIPPING
UNITED WITH
THE BRITISH
ASSOCIATION REGISTER
Date 5.6.51

Harland & Wolff Ltd

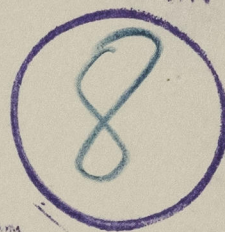
Nº 1454 G

M.V. "BLANDFORD"

STERNFRAME

Cls. No. 80331

RECORDS DEPT.
LONDON



© 2021

Lloyd's Register
Foundation

012836-012844-0295