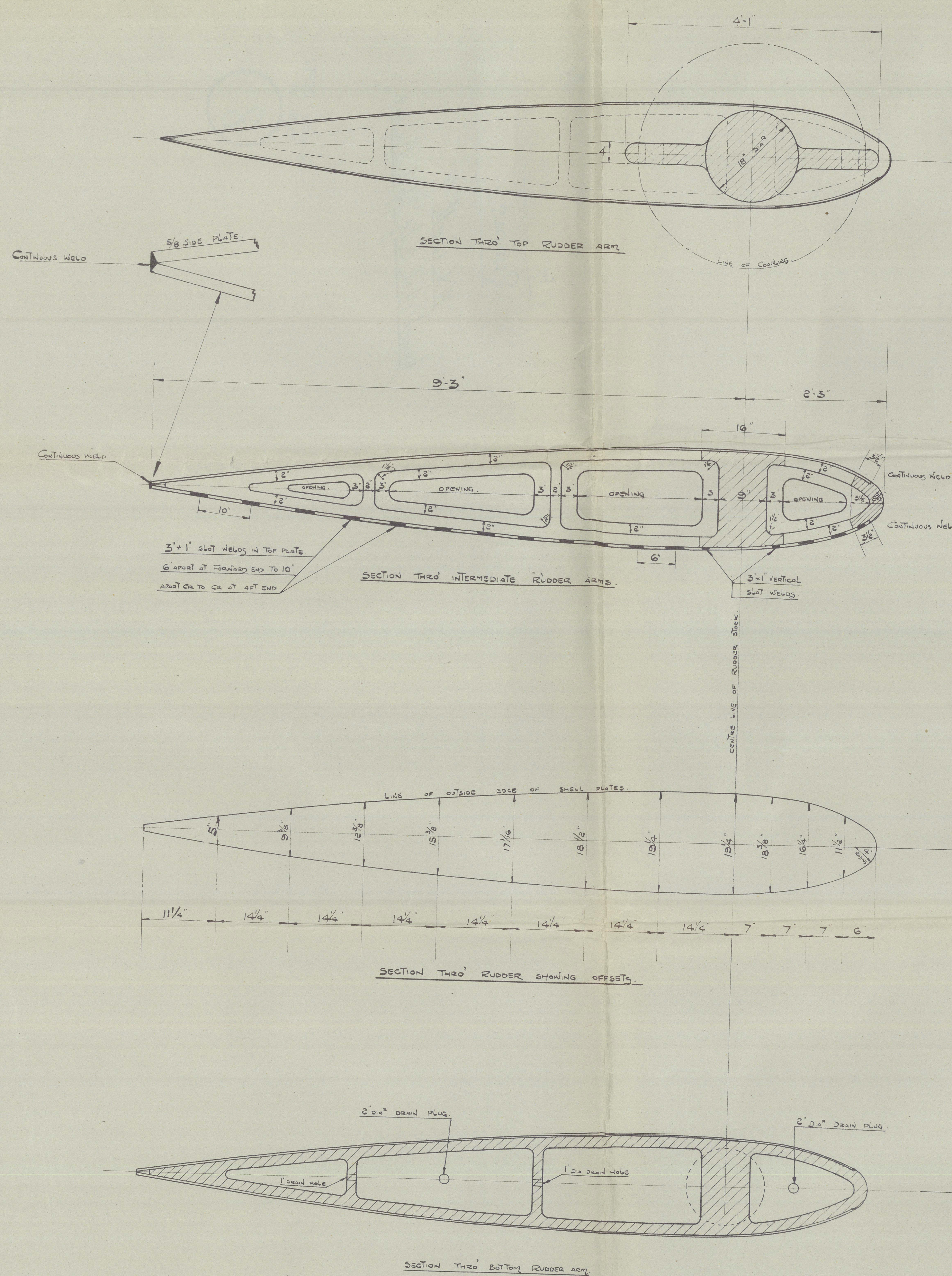


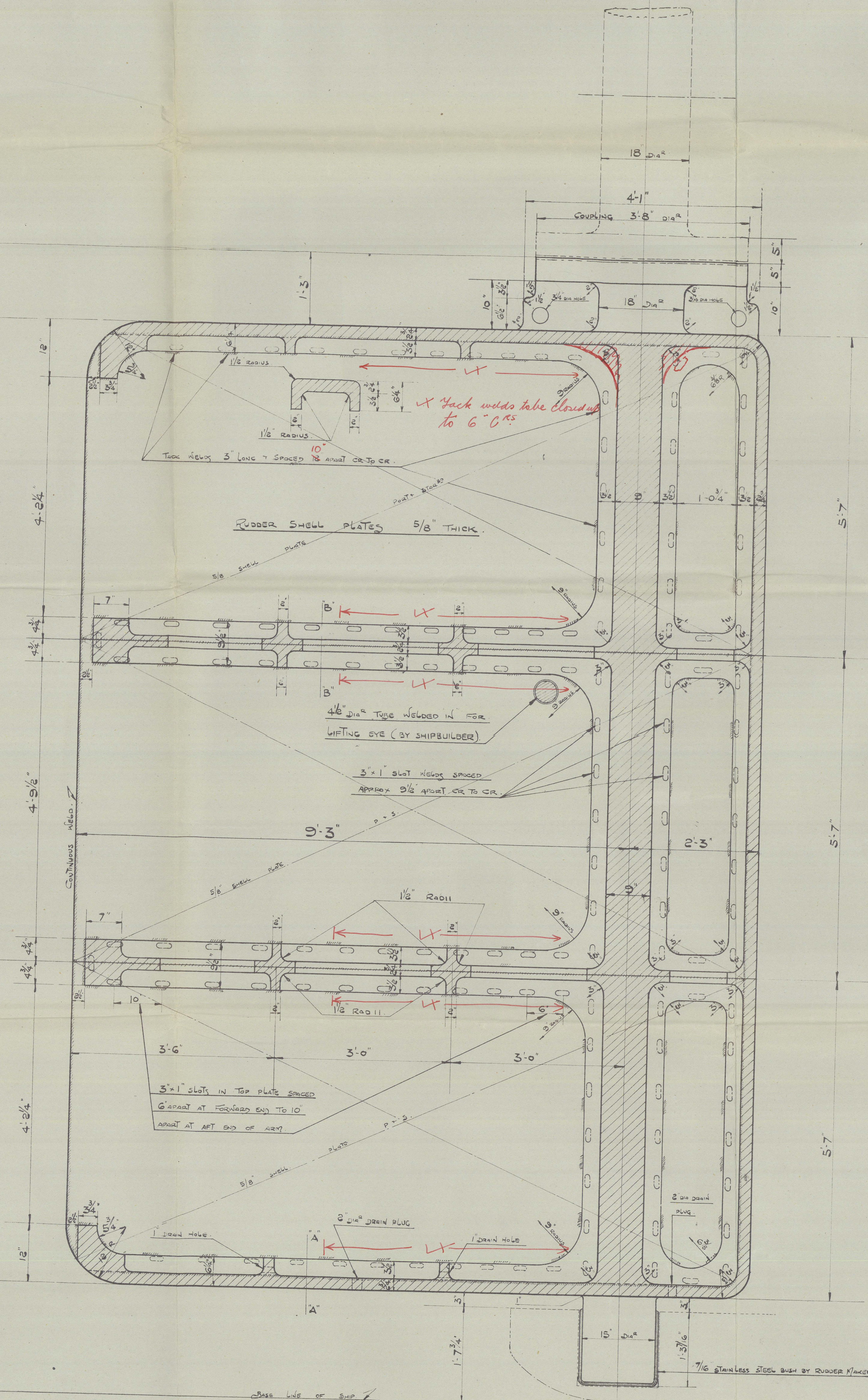
CONSTRUCTION NOTES.

Rudder frame to be laid on top of bottom rudder plate and to be welded to frame as indicated.
 All loose surfaces of rudder to be coated with bituminous solution.
 (S) plate laid in position, 7 entire rudder welded together as indicated.



OVERALL LENGTH OF RUDDER FRAME INCLUDING COUPLING 18' 0"

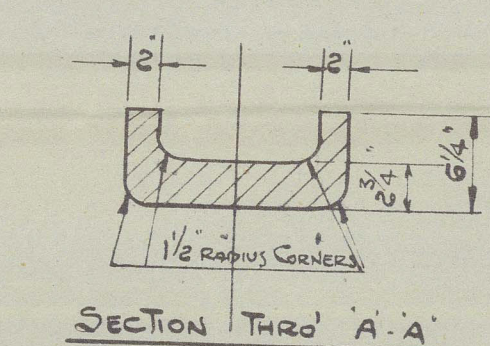
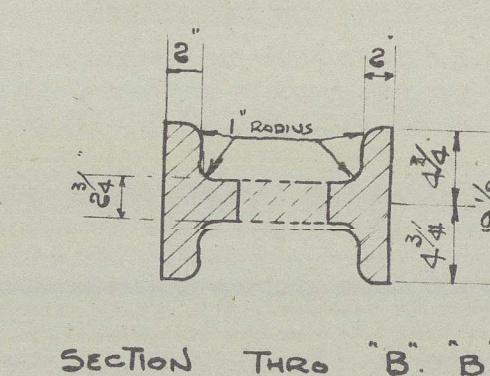
OVERALL LENGTH OF RUDDER FRAME 16' 5"



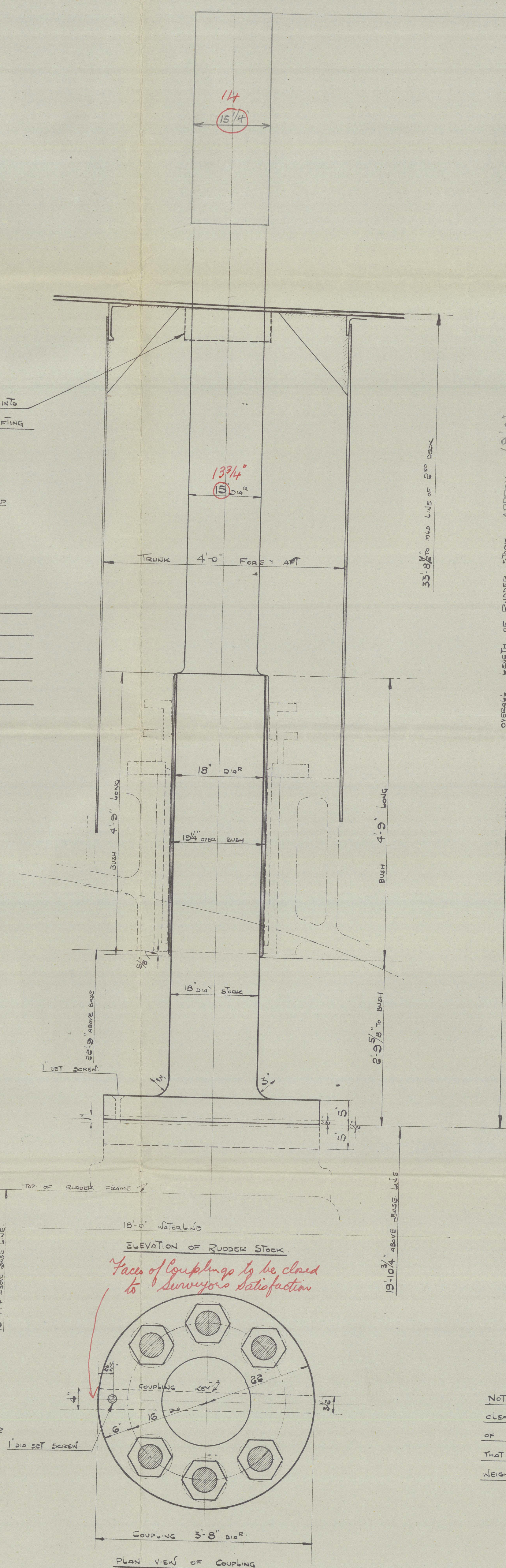
FORGED STEEL COLLAR TAPPED INTO STOCK TO PREVENT RUDDER LIFTING BY SHIPBUILDER.

NOTE: FOR UNSHIPING RUDDER FRAME FORGED STEEL COLLAR MUST BE DISMANTLED TO ALLOW RUDDER STOCK TO LIFT.

HEIGHT OF DECK ABOVE BASE LINE OF SHIP
 LENGTH OF RUDDER STOCK ABOVE DECK
 TOTAL LENGTH OF RUDDER ABOVE BASE LINE
 HEIGHT TO BOTTOM OF RUDDER STOCK
 TOTAL LENGTH OF RUDDER STOCK



RUDDER COUPLING DETAILS.
 RUDDER COUPLING TO BE SUPPLIED BY RUDDER MAKERS.
 RUDDER COUPLING TYPING SURFACES TO BE FINISHED.
 RUDDER COUPLING 44 DIA. COUPLING FLANGES 5 THICK.
 6 OFF 5 DIA. FITTED STEEL BOLTS, SPECIALLY LOCKED WITH COTTER PINS, 3/8 PITCH CENTERS.
 COUPLER TO BE TIGHTENED THAT BOLTS DO NOT LOOSE.
 COUPLING KEY 4x1 1/2 AT ART END TAPPING TO 3/8x1 1/2 AT FORWARD END. KEY TO BE DRIVEN FROM ART AND SUPPLIED BY RUDDER MAKERS.
 1 SET SEEN TO KEY (NOT REQUIRED BY CODE).



NOTE: WHEN FLOATING RUDDER SLIGHT CLEARANCE TO BE LEFT BETWEEN BOTTOM OF STEELFRAME & BOTTOM PLATE TO EXPOSE THAT RUDDER CHARGE IS BEARING ENTIRE WEIGHT OF THE RUDDER.

BALANCED STREAMLINE RUDDER. M. V. N° 1046.

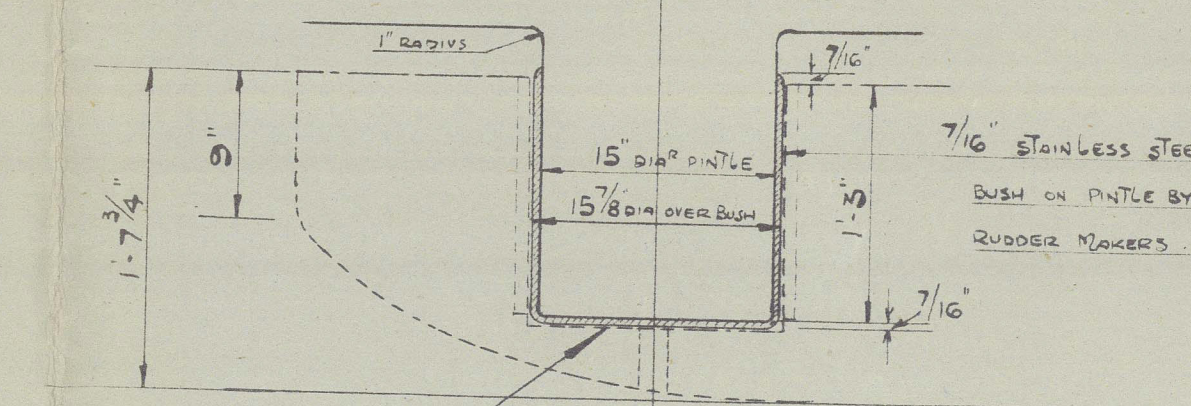
SCALE 1" = 1 FOOT.

RUDDER STOCK: BEST QUALITY WROUGHT IRON OR ELECTRIC CAST STEEL.
 RUDDER FRAME: BEST QUALITY STEEL CASTING.

DETAILS.

DIMENSIONS: 510' 0" B.P. (ON L.W.L.) x 70' 0" MLD x 27' 6" DEPT. MOUNTED TO UPPER DECK.
 TO CLASS 100 A.I. AT LLOYD'S SPECIAL SURVEY FOR CARRYING PETROLEUM IN BULK AND TO BE STRENGTHENED FOR NAVIGATION IN ICE.
 LOAD DRAFT 18' 10".
 SPEED 15 KNOTS.
 IMMERSED AREA OF RUDDER 128.625 sq. ft.
 IMMERSED AREA OF RUDDER ART OF STOCK 154.2375 x 0.4625 = 71.65859
 IMMERSED AREA OF RUDDER FORWARD OF STOCK 37.6875 x 0.4125 = 15.5584
 AREA 192.625 sq. ft. A x D = 674.1875
 2 1/2" OF STOCK TO RULE 12 1/2" x 10 1/2" FOR TANKER x 10 1/2" FOR NAVIGATION IN ICE (15" dia.)
 + 1/4" INCREASE BY OWNERS IN ANY OF STEERING GEAR = (15 1/4" not required 13 1/4" dia.)
 KEYWAYS ETC. TO BE CUT IN RUDDER STOCK AND COUPLING TO PARTICULARS GIVEN.
 RUDDER STOCK TO BE ACCURATELY TURNED TO PARTICULARS GIVEN.
 RUDDER FRAME TO BE ACCURATELY CAST TO SHAPE AS PER DETAILS.
 RUDDER NOT TO EXCEED GIVEN SIGHTINGS, EXCEED OVER ESTIMATED WEIGHT WILL NOT BE PAID.
 PATTERN OF RUDDER FRAME TO BE APPROVED BY SHIPBUILDERS' DESIGNER BEFORE CASTING.

NOTE: BUSHES TO BE TURNED IN ONE PIECE & PROPERLY SHOWN ON PATTERN.
 7/8 STOCK x BY RUDDER MAKERS.



SCALE 1" = 1 FOOT.

APPROVED
 LLOYD'S REGISTER OF SHIPPING
 James M. Clark
 DATE 31/1/49



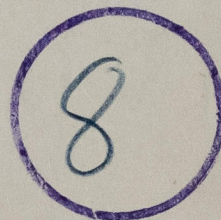
LITHGOWS NO 1046

RHODDER

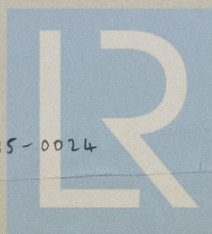
M.V. 'Powell' ★

Glasgow First Entry Report No. 24249

RECORDS DEPT.
LONDON



012827-012835-0024



© 2021

Lloyd's Register
Foundation