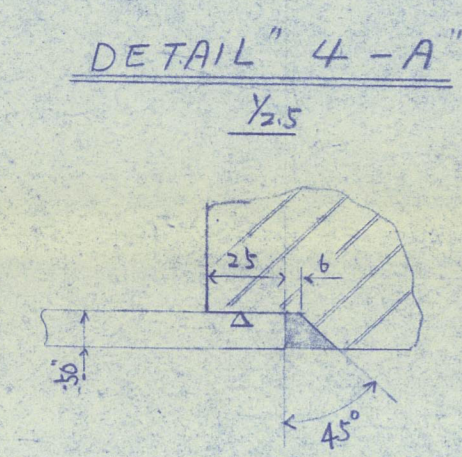
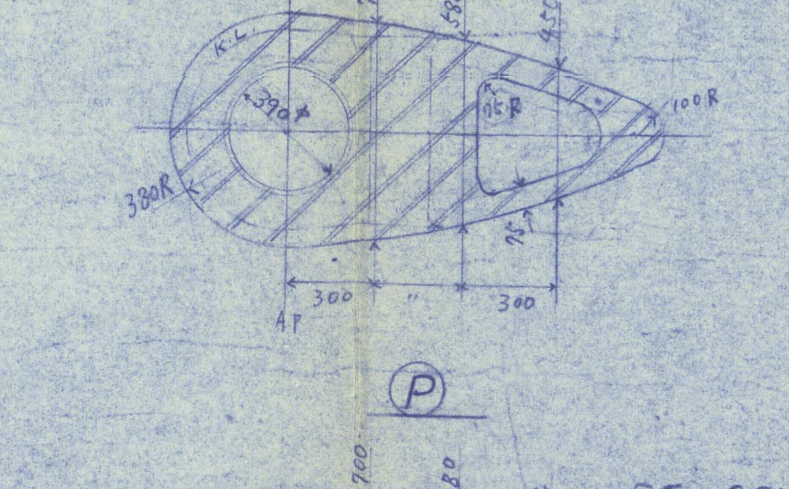
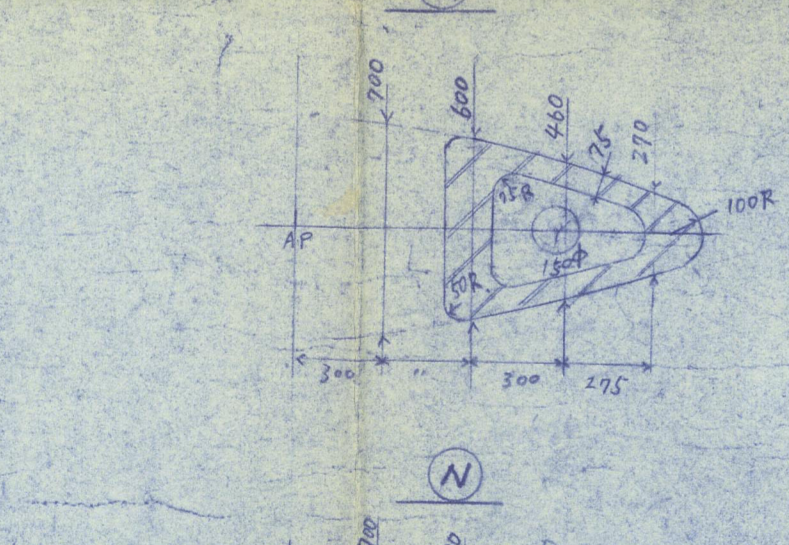
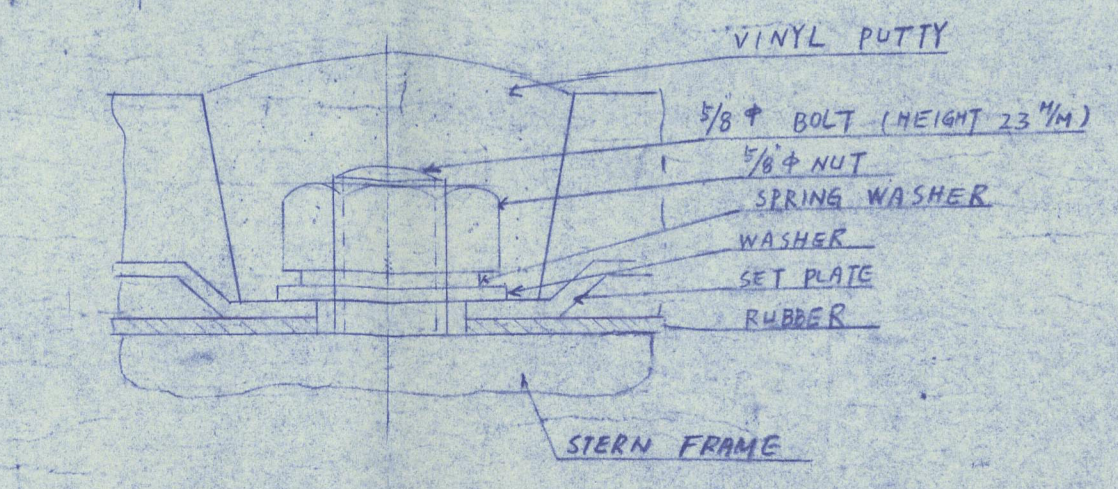
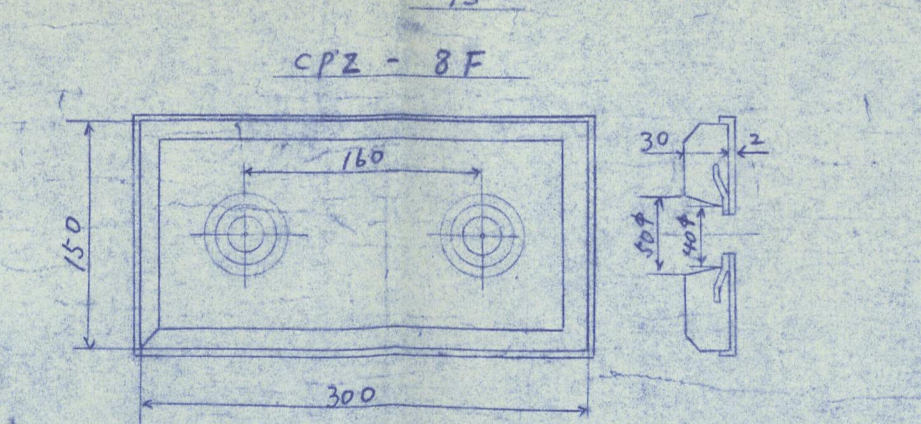
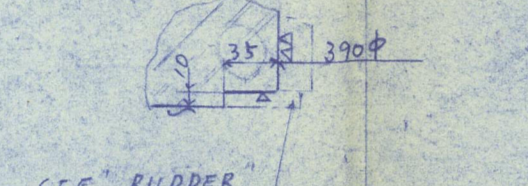


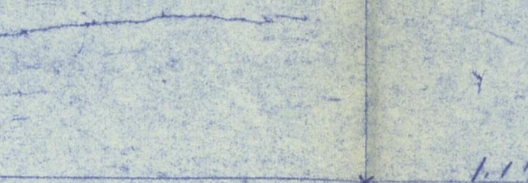
④ DETAIL OF ZINC PLATE



DETAIL 4-B (1/2)



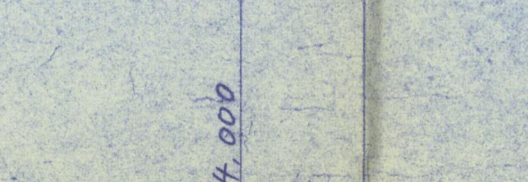
SEE RUDDER (1/2) (1/2)



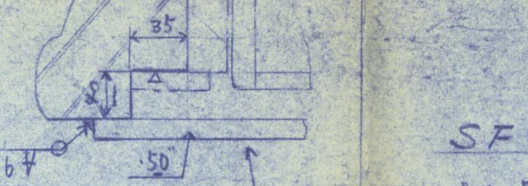
SEE RUDDER (1/2) (1/2)



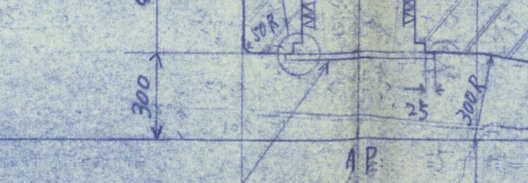
SEE RUDDER (1/2) (1/2)



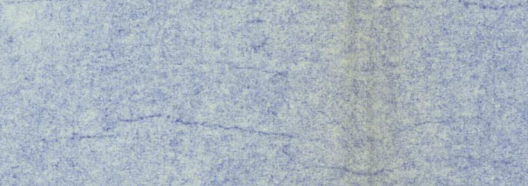
SEE RUDDER (1/2) (1/2)



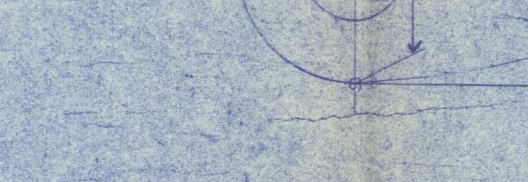
SEE RUDDER (1/2) (1/2)



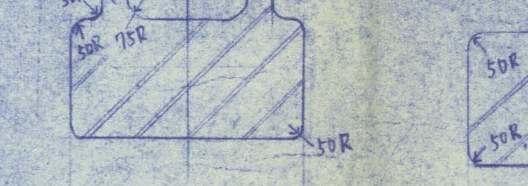
SEE RUDDER (1/2) (1/2)



SEE RUDDER (1/2) (1/2)



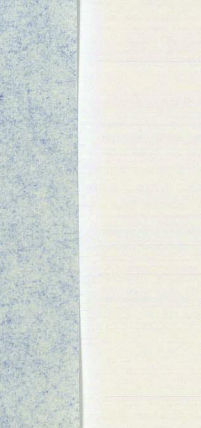
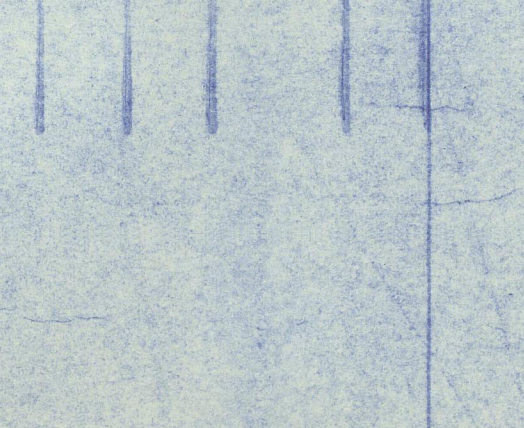
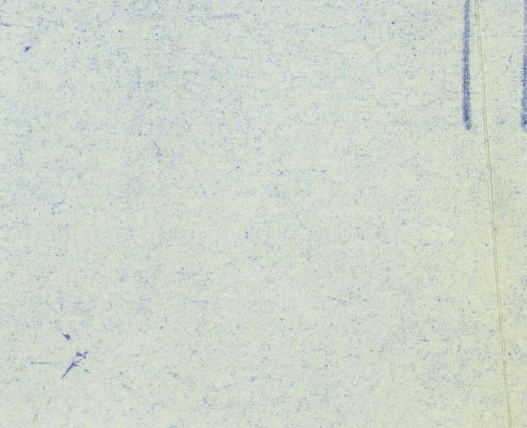
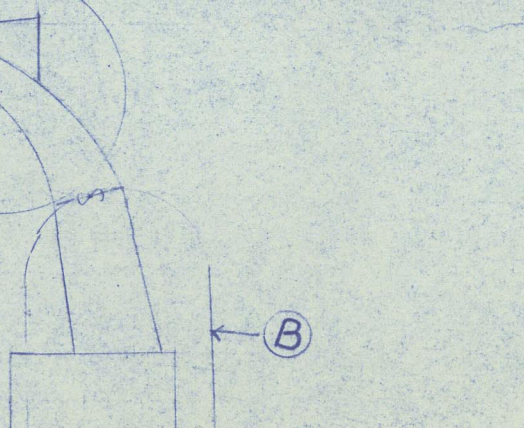
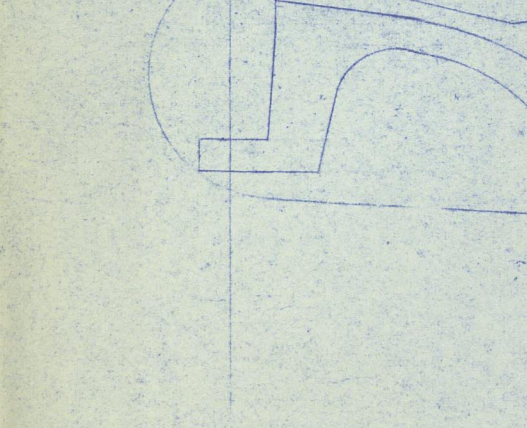
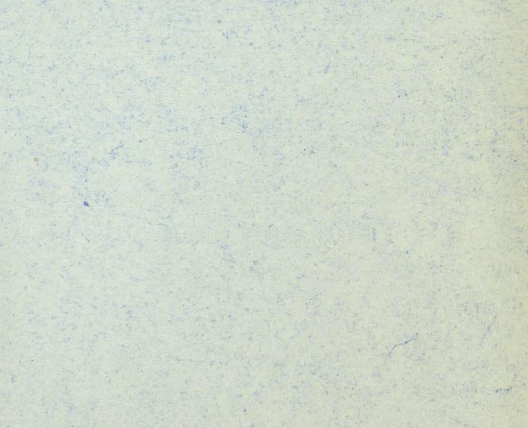
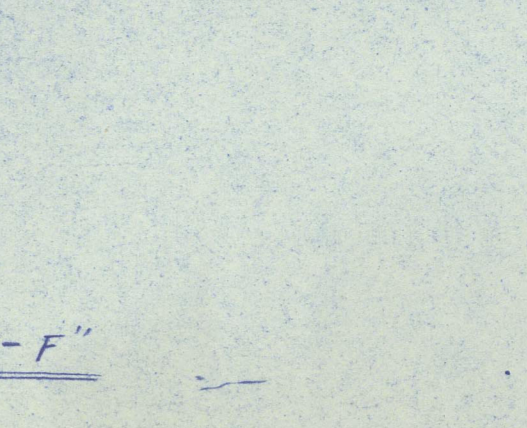
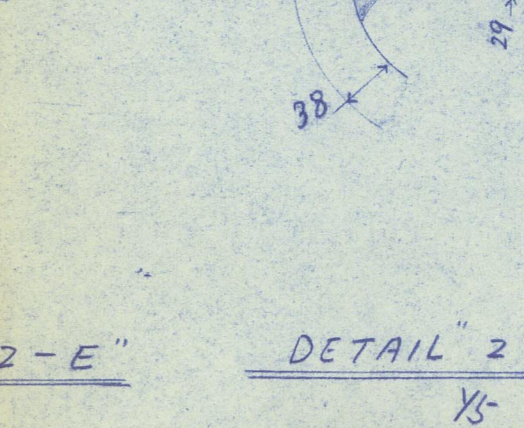
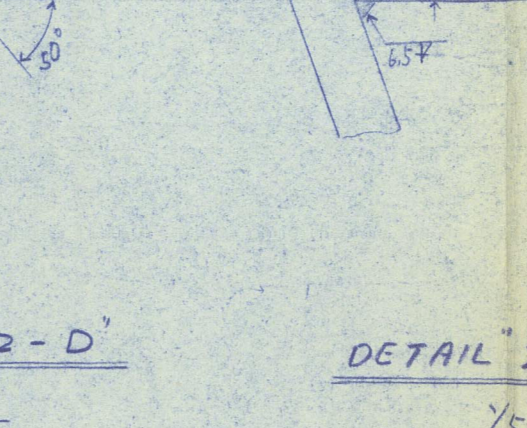
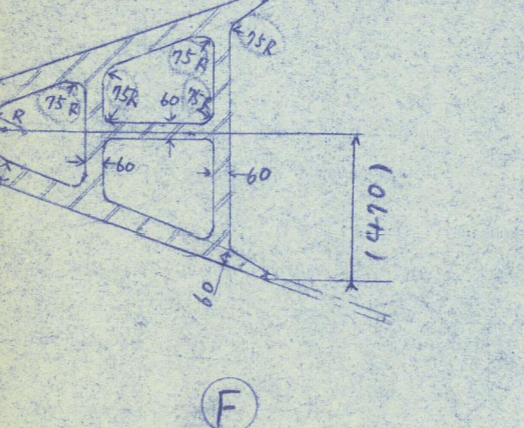
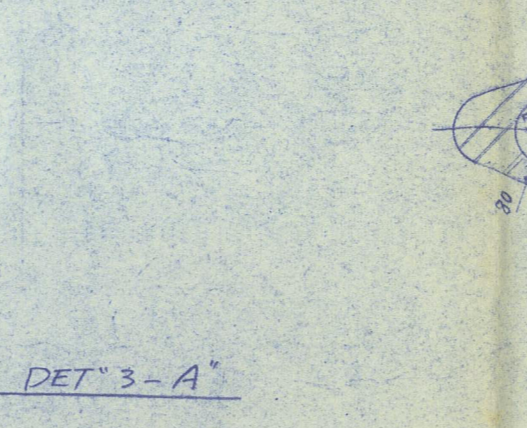
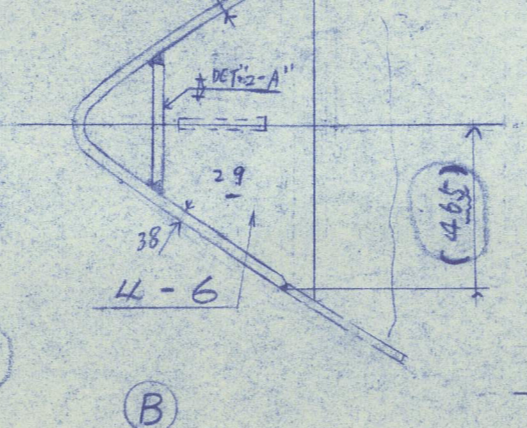
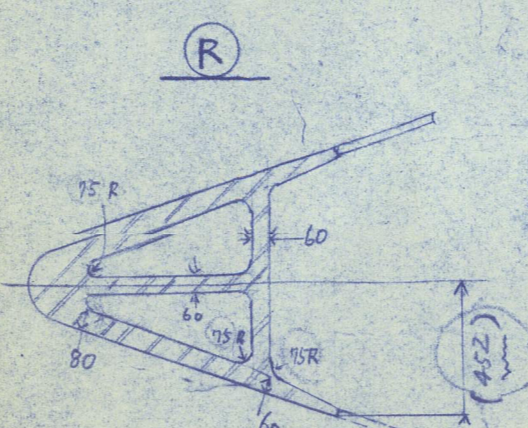
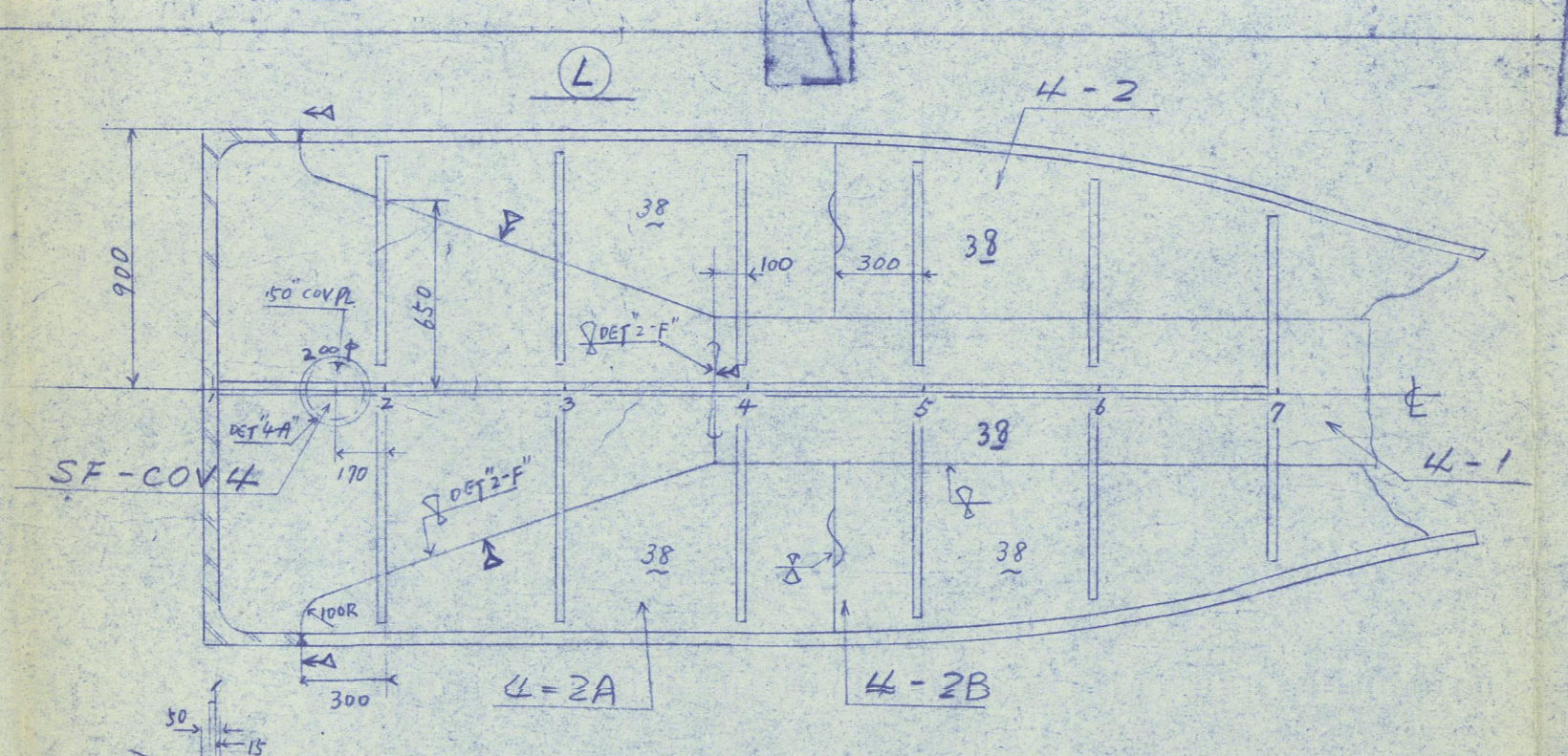
SEE RUDDER (1/2) (1/2)



SEE RUDDER (1/2) (1/2)



SEE RUDDER (1/2) (1/2)



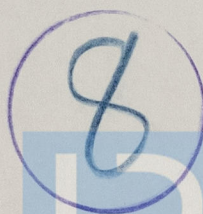
This plan has been verified with the approved plans, and includes any modifications and/or additions to the original approved arrangements made during construction which have been approved locally as being in accordance with or equivalent to Rule requirements.

Signature Hector M. Jean
Surveyor(s) to Lloyd's Register of Shipping.

Date 9th Oct 1963.

Kobe Rpt. No.	11838
Port of Survey	AIOI
Name of Ship	LOZOVAYA.
Title of Plan.	STERNFRAME.

RECORDS DEPT.
LONDON.



© 2021

Lloyd's Register
Foundation

012818-012816-0051