



SHIP No 239 M.V. QUEENSGATE
PROPOSED MOTOR COASTER
MIDSHIP SECTION

SCALE 1/2" = 1 FOOT

DIMS: 110'-3" L.B.P. x 25'-0" B.M.D. x 9'-2" D.M.D.

DRAFT APPROX 8'-4" ABOVE T.O.K.

FRAME SPACING 21'

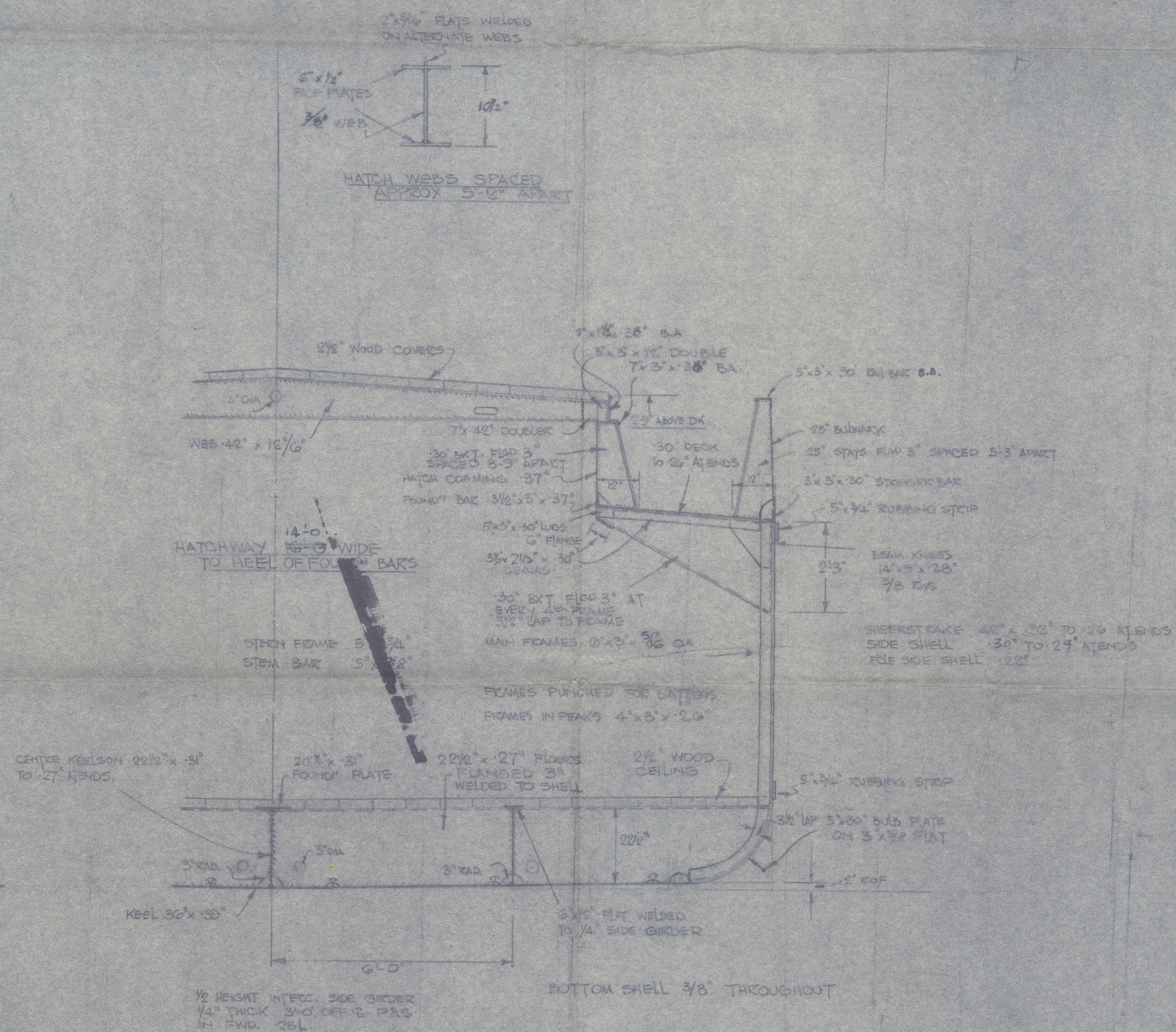
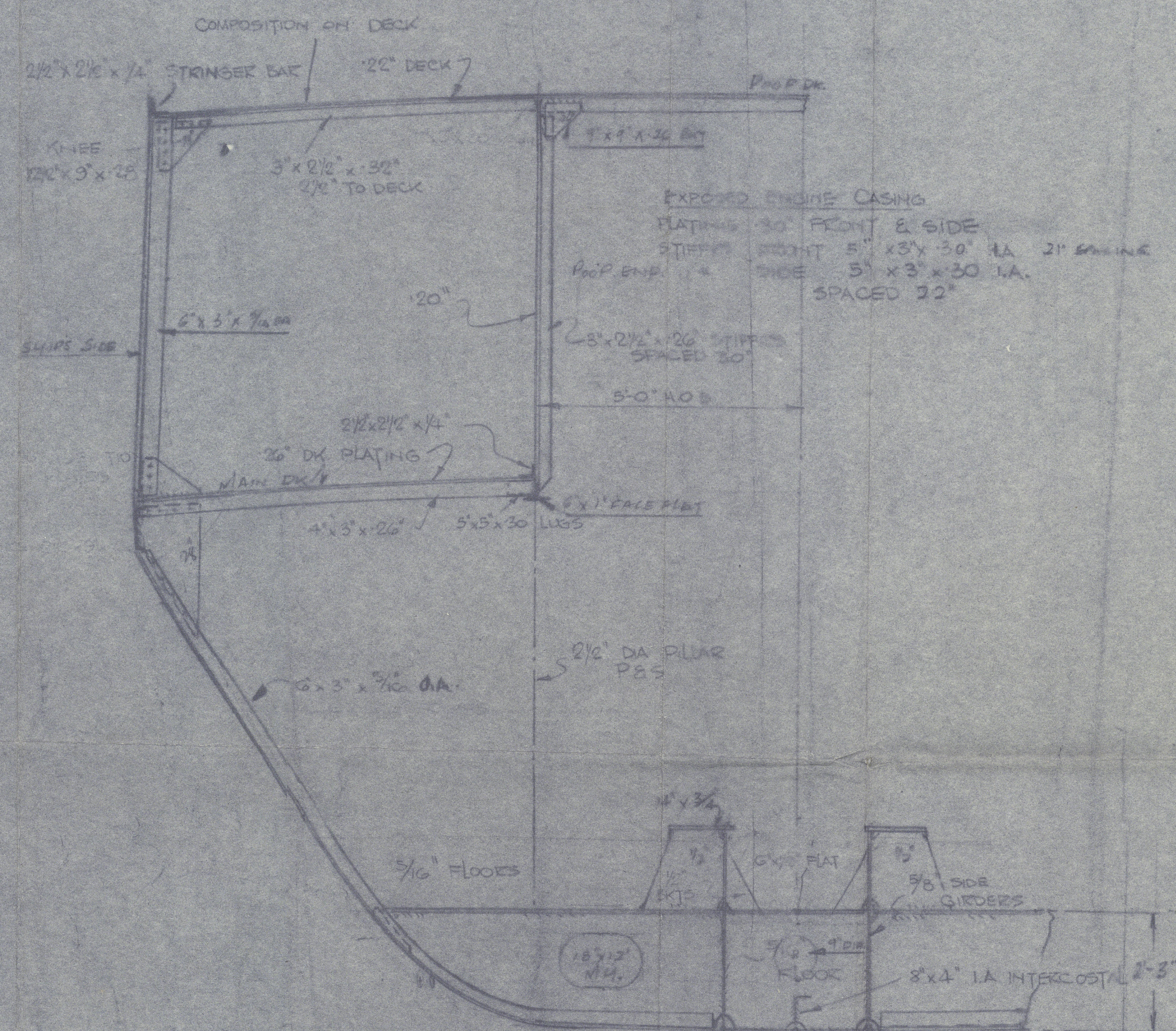
SUITABLE FOR LOADING ABOARD

EQUIPMENT NUMERICAL

$L(B+d) + 85L(D-d) = 110.25(25 + 8.41) + 85.110.25(9.17 - 8.41) = 375.1$	
POOP	$22.5 \times 7 \times .85 = 134$
FOLE	$16.5 \times 6 \times .85 = 84$
CASING	$6.25 \times 7 \times .75 = 33$
	4002

EQUIPMENT LETTER 'C'

- 2 - 6/4 CWT STOCKLESS BOWER ANCHORS
- 1 - STEAM ANCHOR 13/4 CWTs EX STOCK
- 135 FATHOMS 5/16" STUD LINK CHAIN CABLE
- 50 9/12 FSWR 2 1/4" CIRC STEAM WIRE
- 80 TOW LINE
- 2 - 80 FATHOMS 5/16" STEAM MOORING ROPES



SECTION THRO' HOLD

012415-0118-5-0002



CLELANDS (SUCCESSORS) LTD.

QUEENFORD
EX

QUEENSGATE

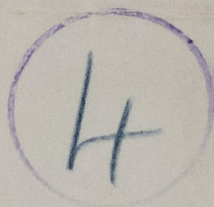
(YARD NO 239)

MIDSHIP SECTION

(AS FITTED)

D/S 906

RECORDS DEPT.,
LONDON.



012318-012326-0002

© 2021

Lloyd's Register
Foundation