

SHIP N^o 1295/6. RUDDER & STERNFRAME.

SCALE: 1" = 1'-0" & AS SHOWN.

PLAN N^o 5.

DIMENSIONS:

85'-0" L.S.P. x 26'-0" B.M.D. x 12'-2" D.M.D.
LOAD DRAFT (MEAN) 10'-6" (U.S.K.)

DATA:

AREA - TOTAL = 41 sq. ft.
C.B. OF AREA FROM AXIS = 1044 ft.
NUMERICAL = 41.6
AREA COEF = 0.25 = 0.25
SERVICE SPEED = 11 KNOTS.
DIA. OF STOCK = 4 1/2"
DIA. OF PINTLE = 3 1/2"
MAX. WORKING ANGLE OF HELM = 40°

TESTS:

TO LLOYD'S TESTS & REQUIREMENTS.

MATERIAL:

RUDDER STOCK - FORMED STEEL, QUALITY IN ACCORDANCE WITH RULES OF LLOYD'S.
RUDDER FRAME & STERNFRAME - FORGED SCRAP IRON, OR SCRAP STEEL, (CARBON CONTENT NOT TO EXCEED 0.25% FOR WELDING PURPOSES).
RUDDER PINTLE - FORGED STEEL.

MACHINING:

STOCK TO BE DRESSED ALL OVER & SMOOTH TURNED IN WAY OF TILLER QUADRANT.
STEERING GEAR BEARINGS, RUDDER STOCK HIGH BEARINGS & RUDDER CARRIER.
COUPLING BESSON ON EDGES & FINISH MACHINED ON FACES.
PROPELLER HUB TO BE ROUGH FACED & ROUGH BORED BY CONTRACTOR.
SURFACES OF STERNFRAME & RUDDER MAINPIECE WHERE IN CONTACT WITH H.A.S. PLATES ARE TO BE DRESSED & FINISHED BY CONTRACTOR.
PROPELLER HUB & HUBS MACHINED TO FINISHED SIZE BY C.L. & C.T. (S.S.)
FINISHED MACHINED SURFACES INDICATED THUS -

ALIGNMENT:

CENTRE OF PINTLE, UPPER RUDDER STOCK & RUDDER MAINPIECE TO BE IN PERFECT ALIGNMENT.
FACE OF RUDDER COUPLING PLAINES ARE TO BE SQUARE TO RUDDER AXIS.

TEMPLATES:

TEMPLATES OR FULL SIZE TRACINGS WILL BE SUPPLIED & ARE TO BE WORKED TO IN REFERENCE TO THIS PLAN.

RIVET HOLES:

NO RIVET HOLES TO BE DRILLED IN FORNISES UNTIL LINED OFF BY CANNELL-LAND & CO. REPRESENTATIVE, OR TO FULL SIZE TRACINGS SHOWN HEREON.

COATINGS OF RUDDER:

INTERIOR OF RUDDER - COATED WITH BITUMINOUS SOLUTION.
PAINTING SURFACES OF RUDDER - HEAVILY COATED WITH RED LEAD.

RUDDER TEST:

PRESSURE TEST ON RUDDER = 10 LB./SQ. IN.

MATERIAL & WORKMANSHIP:

TO BE TO THE SATISFACTION OF LLOYD'S, SHIPBUILDERS & OWNERS REPRESENTATIVES.

ANTI-GALVANIC PROTECTION:

NONE FITTED.

SUPPLIED BY CONTRACTOR (S.S. FORSTER & SONS LTD.)

RUDDER STOCK HIGH BEARINGS IS THE SUBJECT OF A SEPARATE ORDER.

RUDDER COMPLETE WITH STOCK, MAINPIECE, H.A.S. PLATES & SECTION LIFTING TUG, OR H.A.S. PLATE & PINTLE.

STERNFRAME COMPLETE.

CONTRACTOR TO SUPPLY & FIT THE FOLLOWING ITEMS:

FITTED COUPLING BOLTS & PINS

EVERETT FOR LIFTING RUDDER

M.S. BEARING RING & SET BOLTS ON STERNFRAME GIBSON.

SUBMERGIBLE BUSH & SCREWS.

PINTLE & LUGS COMPLETE.

POINT GAUGES.

COUPLING KEY.

POINT GAUGES:

POINT GAUGE, IN WAY OF TILLER QUADRANT, RUDDER CARRIER & RUDDER HIGH BEARINGS, ARE TO BE SUPPLIED BY STOCKMAKER TO SHIPBUILDER FOR STEERING GEAR MAKER & CARRIER MAKER.

KEYWAY GAUGES:

KEYWAY GAUGES GIVING EXACT WIDTH OF KEYWAYS IN WAY OF TILLER QUADRANT & RUDDER CARRIER WILL BE SUPPLIED BY SHIPBUILDER TO STOCK MAKER, STEERING GEAR MAKER & CARRIER MAKER.

INSPECTION:

RUDDER TO BE INSPECTED BY SHIPBUILDERS REPRESENTATIVE BEFORE RUDDER CLOSING PLATE IS FITTED.
CONTRACTOR TO INFORM SHIPBUILDER WHEN RUDDER IS READY FOR INSPECTION.

WELDED JOINTS:

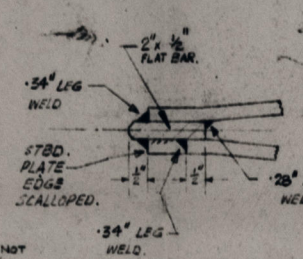
ALL WELDED JOINTS IN STERNFRAME & RUDDERFRAME TO BE ANNEALED ON COMPLETION.

PLAN N^o 5.

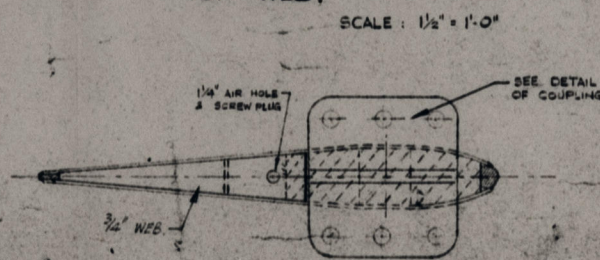
APPROVED BY

OWNERS 1 MAY 1987
LLOYD'S 1 MAY 1987
E.D.O. 6 MAY 1987

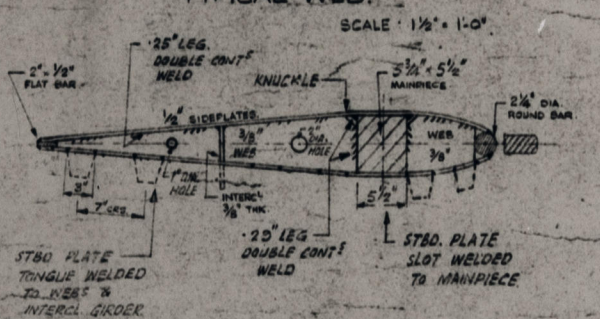
TRAILING EDGE. SCALE: 1/2" = 1'-0"



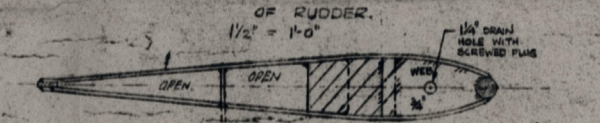
TOP WEB. SCALE: 1/2" = 1'-0"



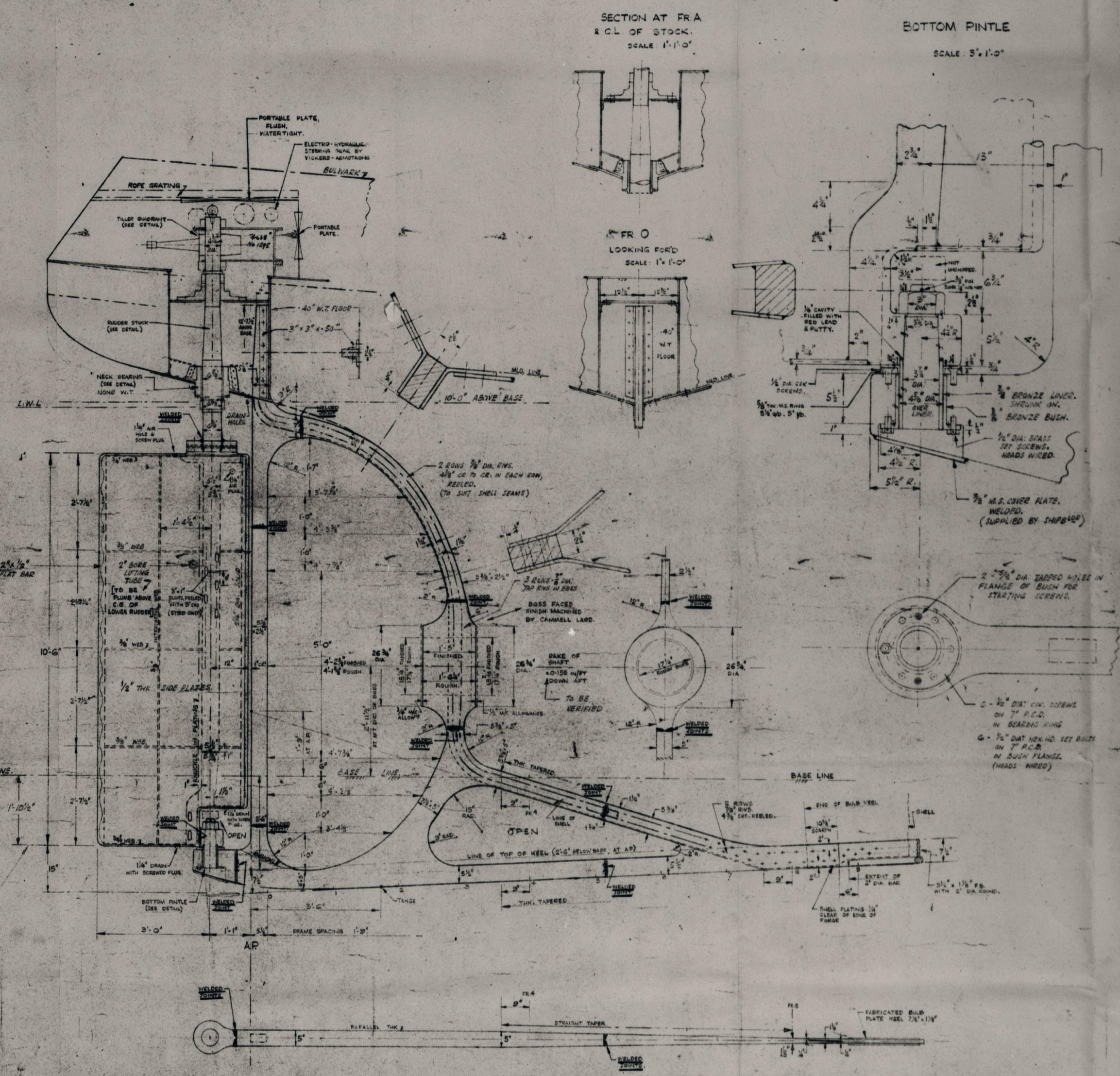
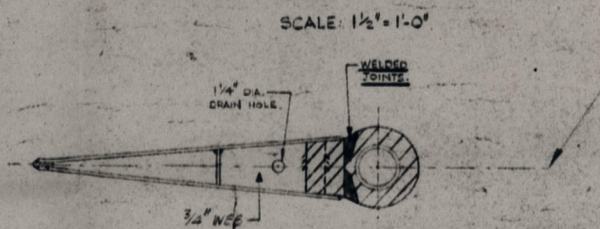
TYPICAL WEB. SCALE: 1/2" = 1'-0"



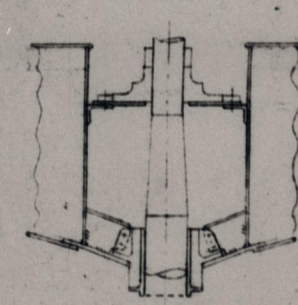
PLAN AT 12' ABOVE BOTTOM OF RUDDER. SCALE: 1/2" = 1'-0"



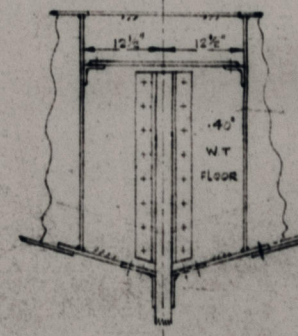
BOTTOM WEB. SCALE: 1/2" = 1'-0"



SECTION AT FRA & CL OF STOCK. SCALE: 1" = 1'-0"



FR O LOOKING FORD SCALE: 1" = 1'-0"



BOTTOM PINTLE SCALE: 3" = 1'-0"

