

# ACHTER STEVEN

## EN ROER

SCHAAL 1-10 1-5 1-2

24350 107

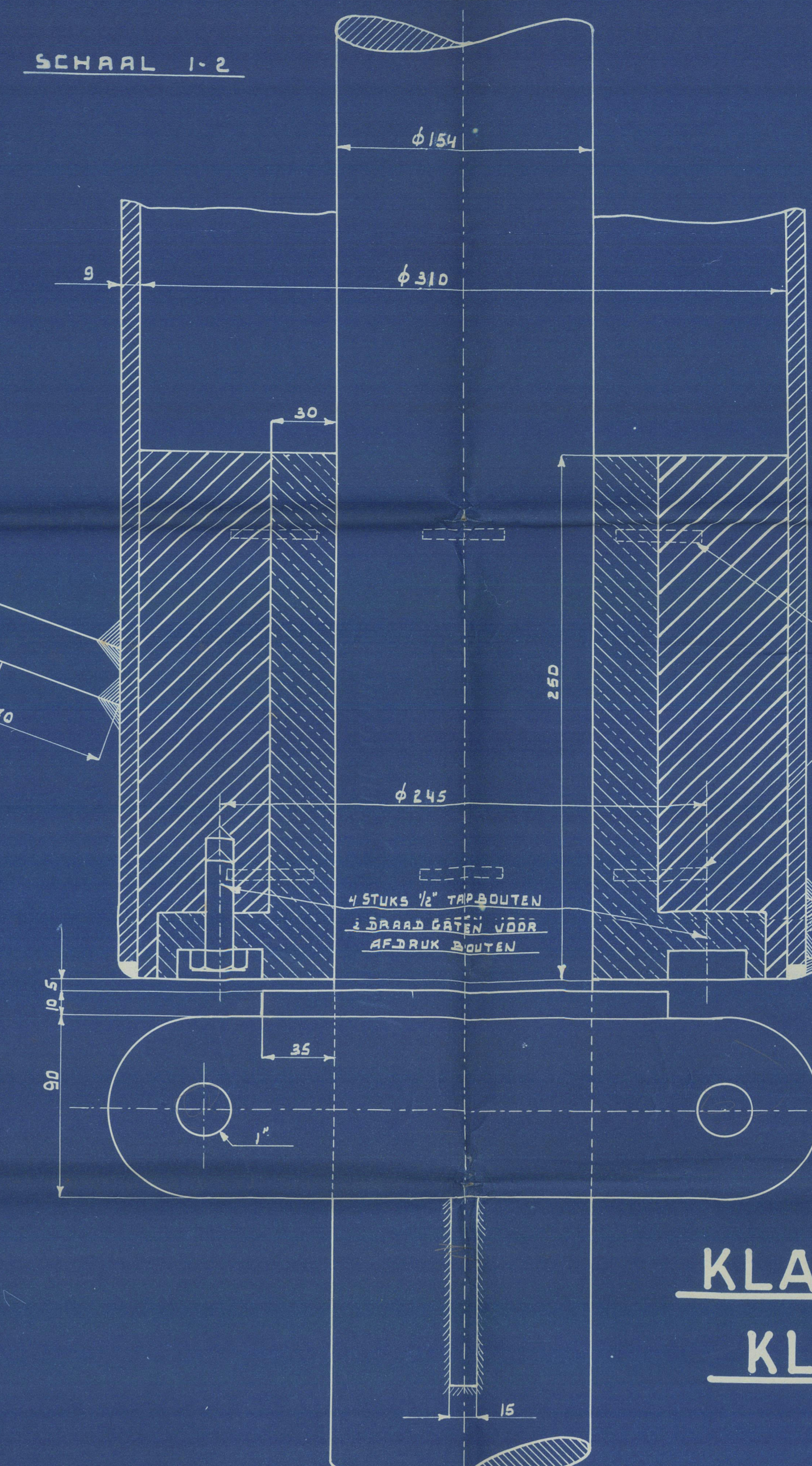
*Handwritten signature and date*  
24-12-37

KLASSE BRITISH CORPORATION

KLASSE BUREAU VERITAS

+ I 3/3 L.I.I.

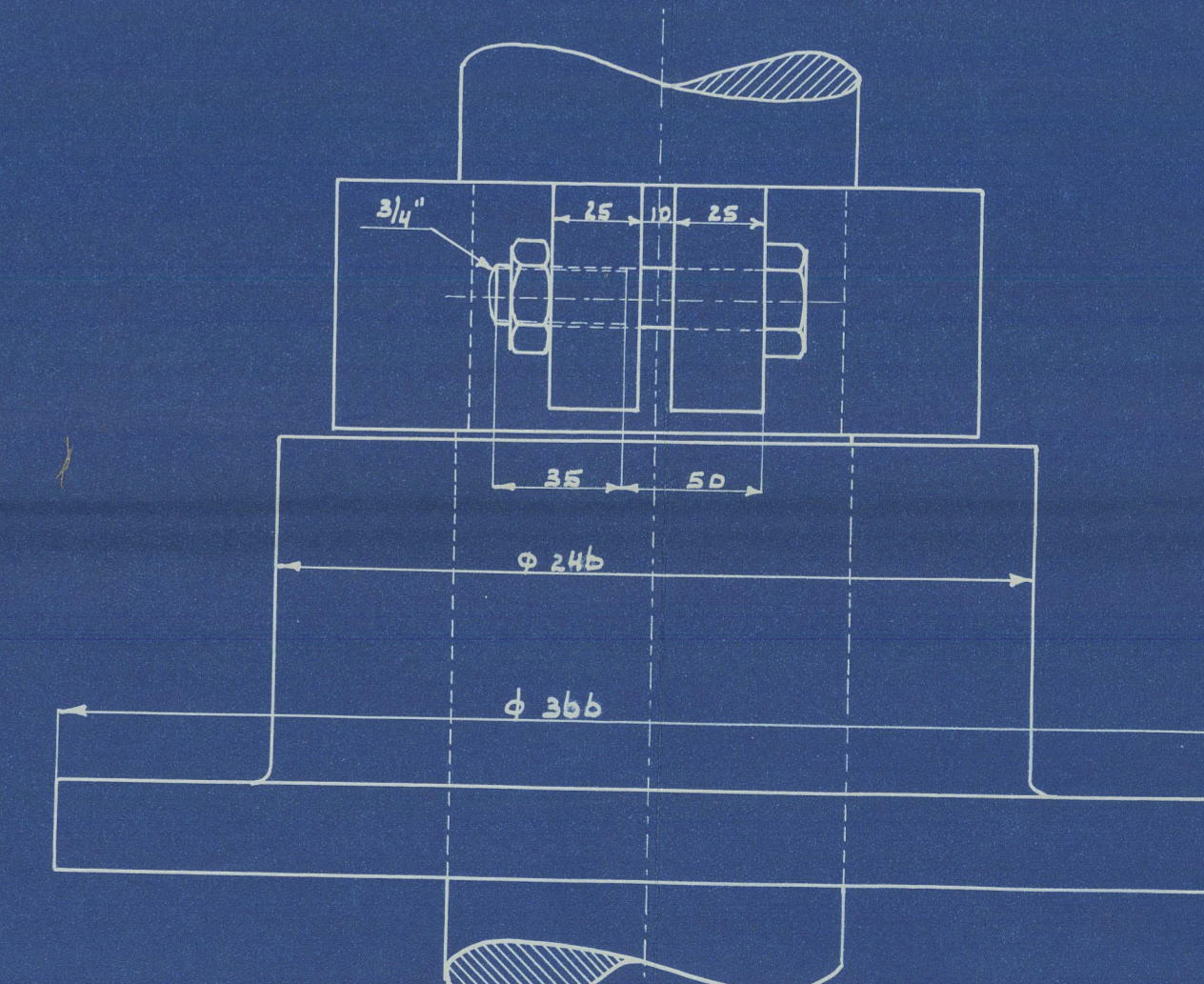
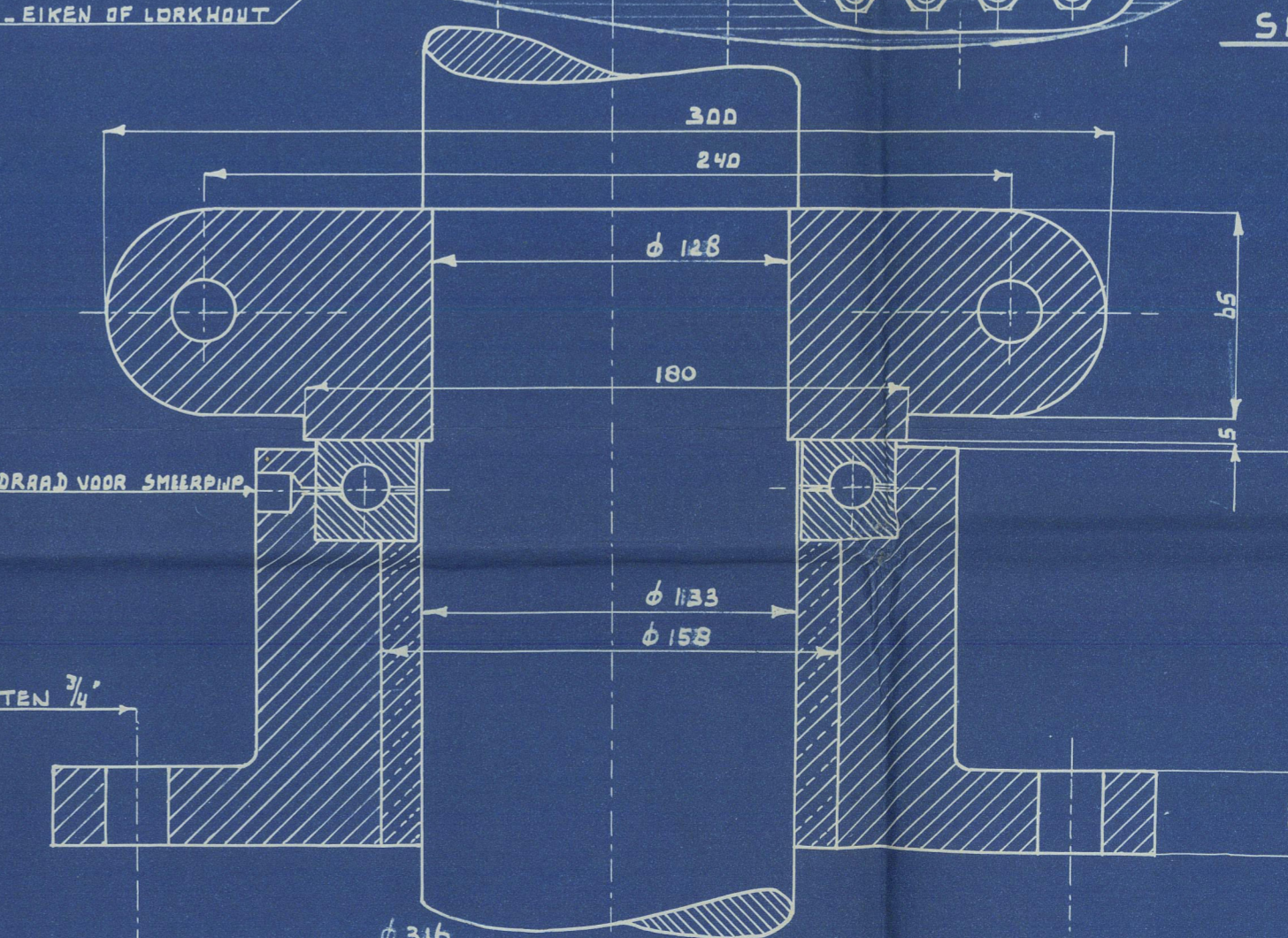
SCHAAL 1-2



SPLEETLASSCHEN OVER 1/3 ONTREK

BOVEN AANZICHT ROER

SCHAAL 1-2



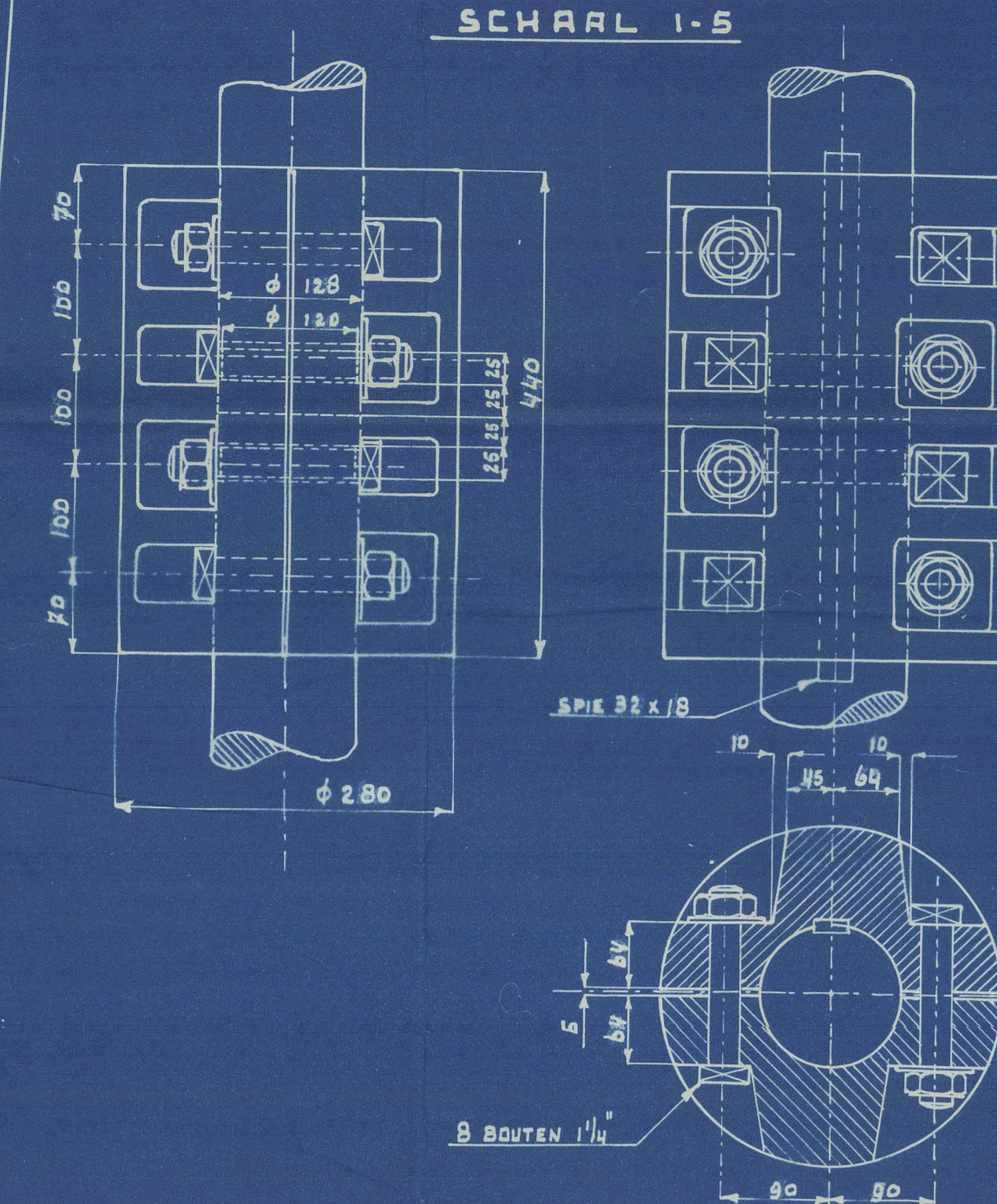
N.V. E.J. SMIT EN ZOON

SCHEEPSWERVEN

WESTERBROEK HOLLAND

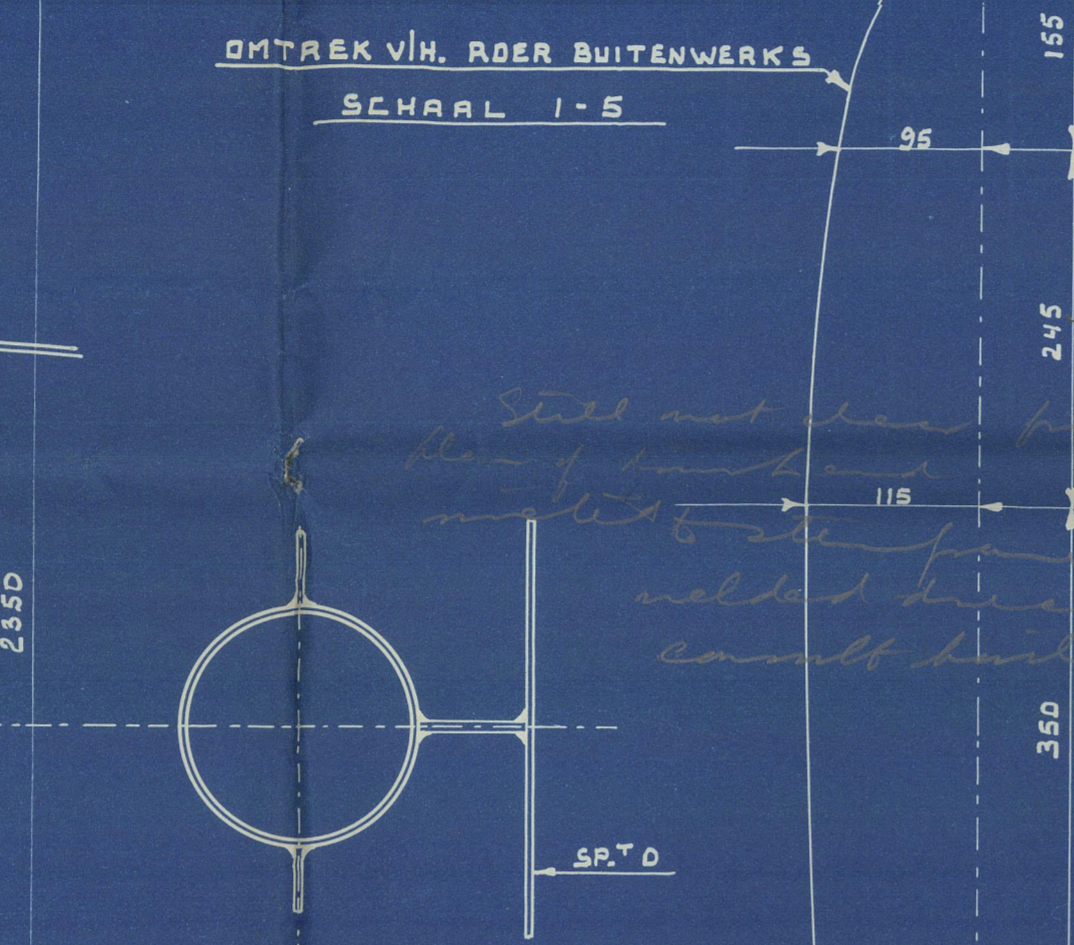
STALEN KLEMKOPPELING

SCHAAL 1-5



ONTREK V.H. ROER BUITENWERKS

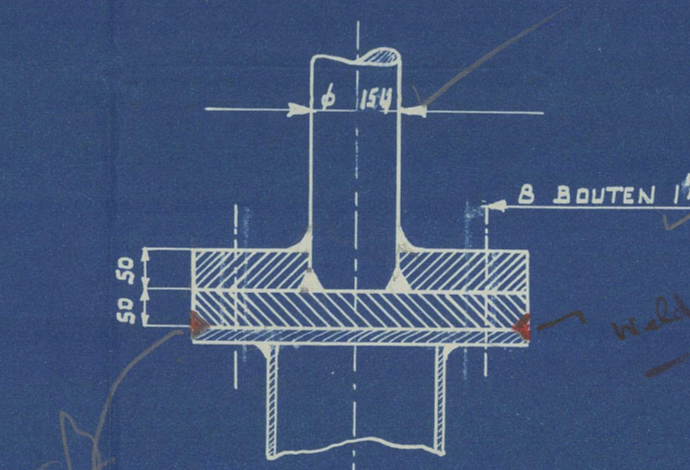
SCHAAL 1-5



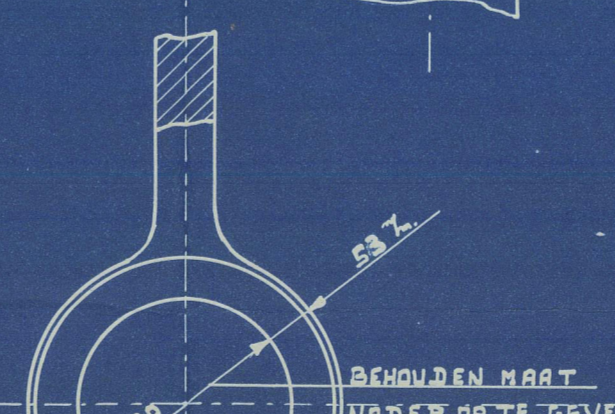
JUISTE VORM VAN SPANTEN VLOER NEMEN



BEVESTIGING KONING AAN ROER



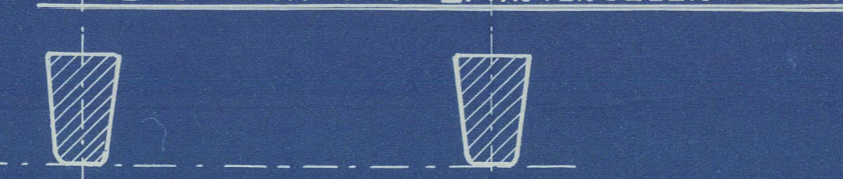
1" BOUTEN AANZICHT



NAGELS 2 AANEN TIGTAG 22"

5 D IN ELKE RIJ

JUISTE VORM VAN SPANTENVLOER NEMEN



S- 654-655-14

6

And Rudder & Sternframe.

R. J. Smit & Zoon.

N<sup>o</sup> 654.

24.12.37.

SCHELDT.

165'

1000-84210-14210

Smit & Zoon 654  
Rudder & Sternframe  
© 2021

Lloyd's Register  
 Foundation