

UNITED SIX

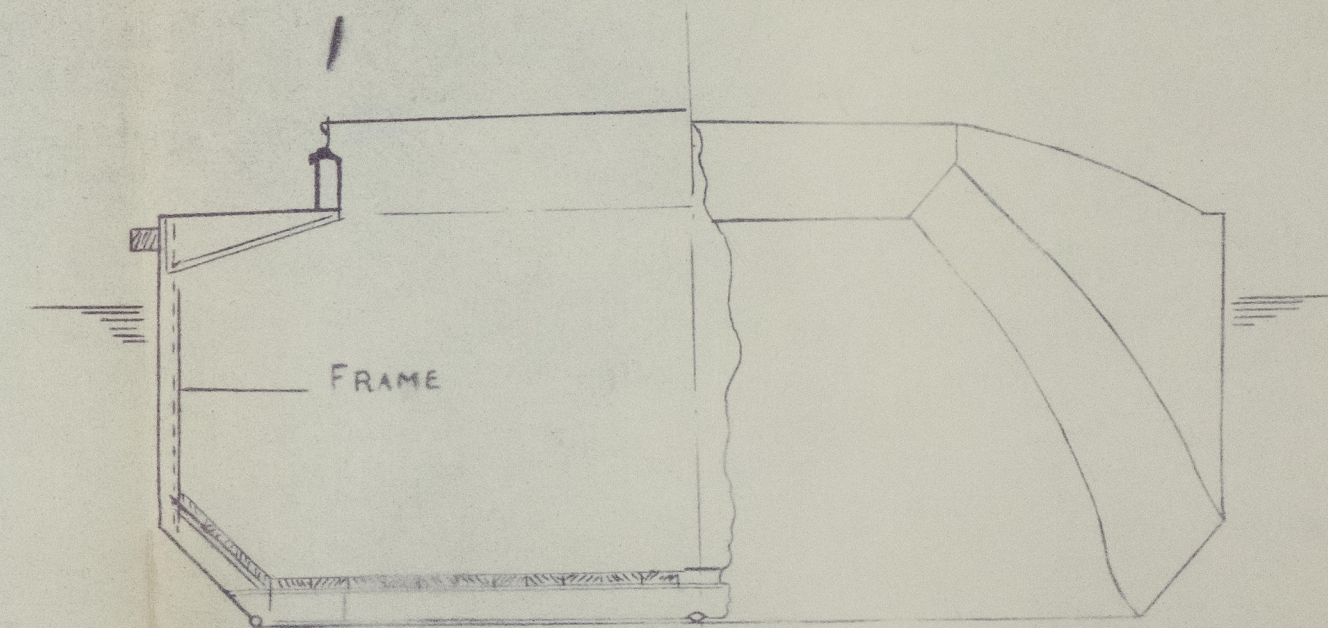
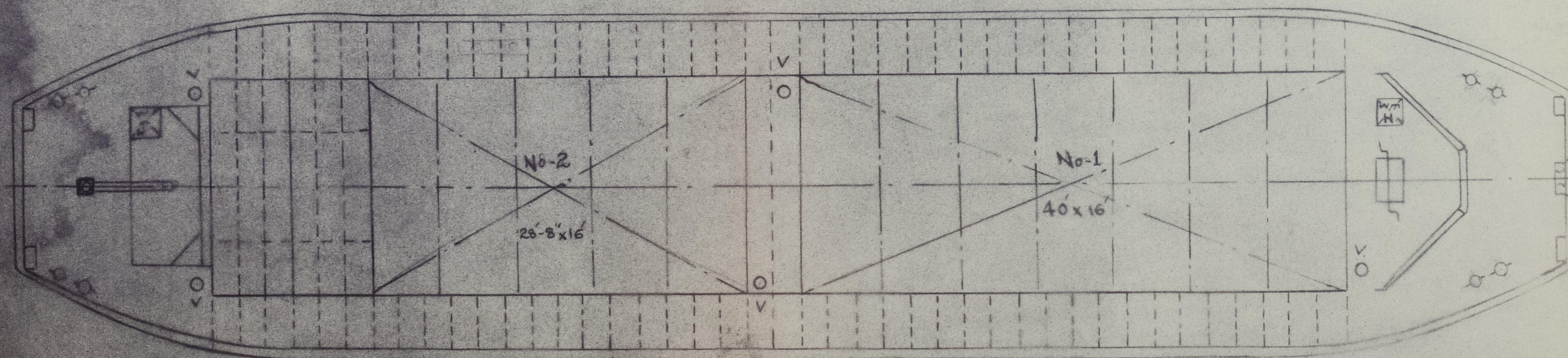
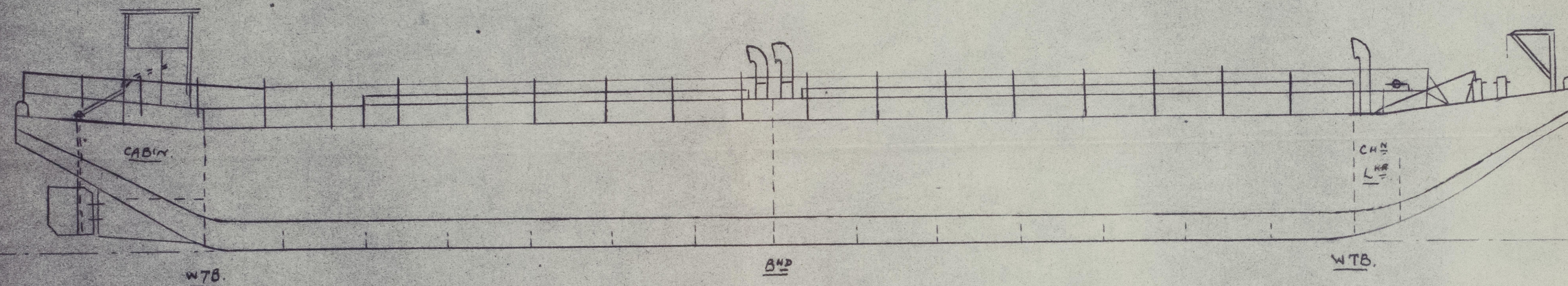
350 TON SEAGOING BARGE

(ALL WELDED) FOR SERVICE AT CHITTAGONG

SCALE $\frac{1}{8}" \& \frac{1}{4}" = \text{ONE FOOT}$

AS BUILT GENERAL ARRANGEMENT

DIMENSIONS L.O.A. - 115'-4"
 MOULDED L.B.P. - 106'-11"
 " BEAM - 24'-0"
 " DEPTH - 9'-0"
 DRAUGHT - 7'-3"



TYPICAL SECTIONS THRO
 HOLD & FORE END.

DRG. No. SB/16

BUILDERS C&C LTD. KARACHI.

DATE OF BUILD

YARD No. C&C LTD.

012734-012743-0059

"UNITED SIX" ★

KRH RPT. NO. 654

general arrangement
Cas built).

RECORDS DEPT.
LONDON.



© 2021

Lloyd's Register
Foundation

012734-012743-0059