

UNITED SIX.

350 TON SEAGOING BARGE

(ALL WELDED) FOR SERVICE AT CHITTAGONG

SCALE $\frac{1}{8}$ " & $\frac{1}{4}$ " = ONE FOOT

AS BUILT GENERAL ARRANGEMENT

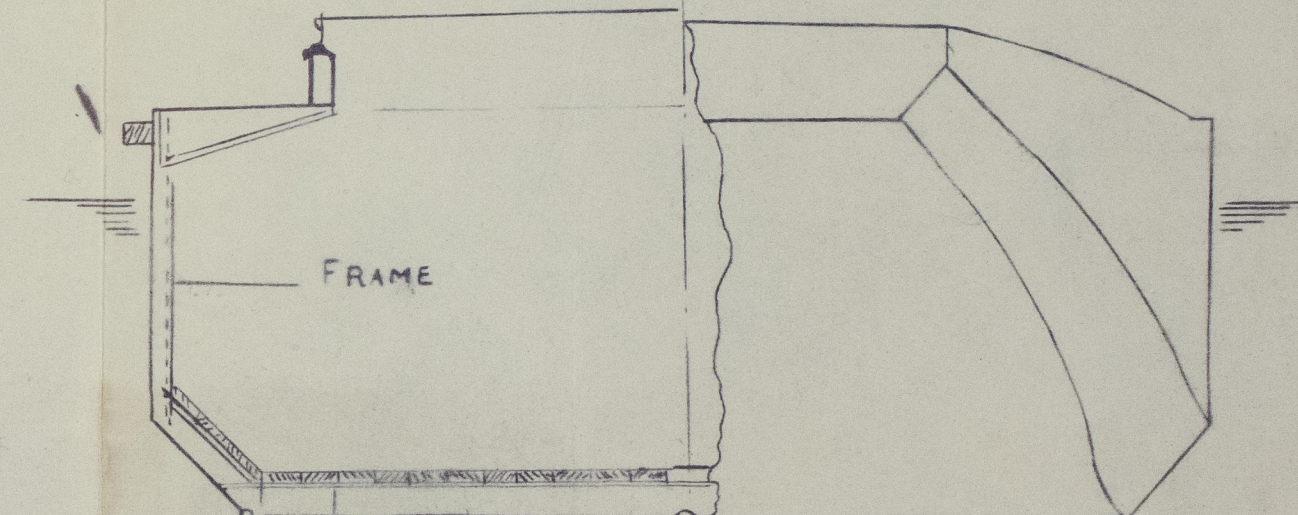
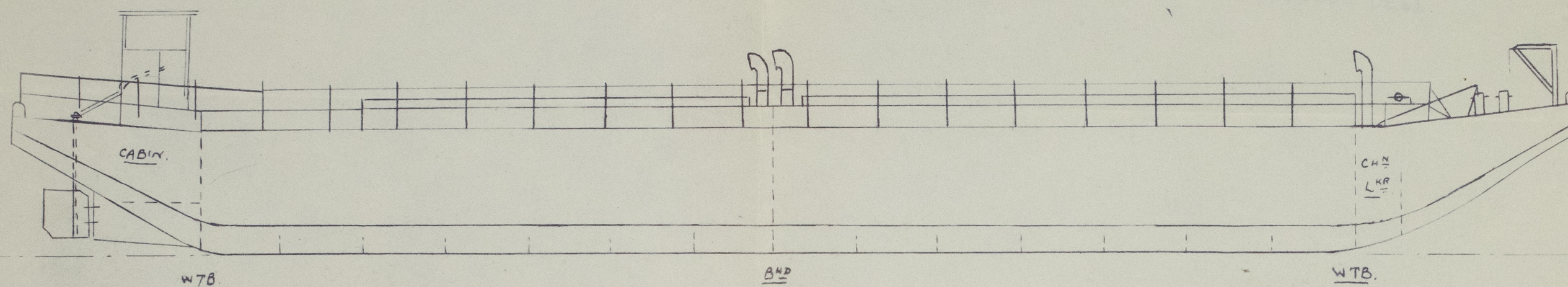
DIMENSIONS L.O.A. - 115'-4"

MOULDED. L.B.P. - 106'-11"

" BEAM - 24'-0"

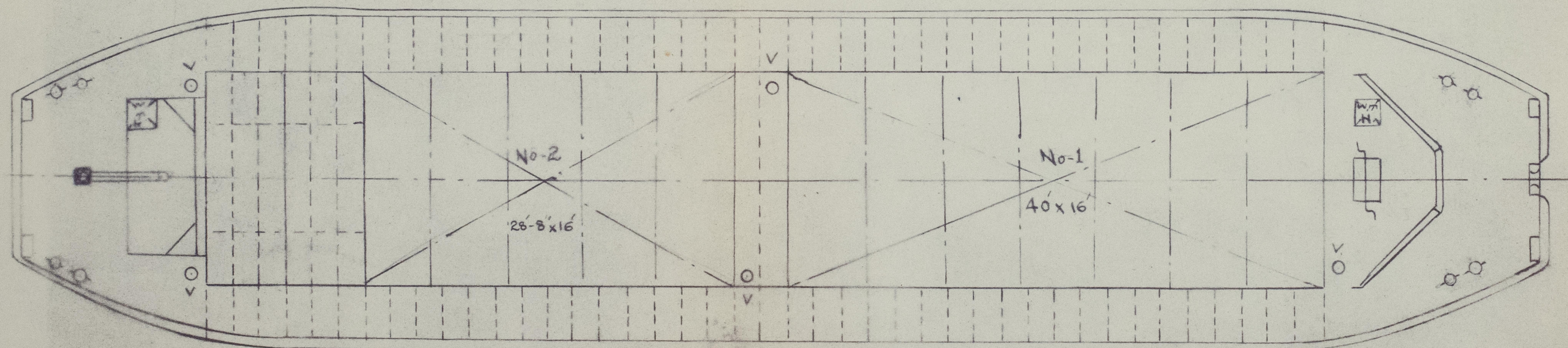
" DEPTH. - 9'-0"

DRAUGHT - 7'-3"



TYPICAL SECTIONS THRO'

HOLD & FORE END.



DRG. No. SB/16

BUILDERS C & C LTD KARACHI.

DATE OF BUILD

YARD No. C & C LTD

012734.012743-0058

"UNITED SIX" ★

KRH RPT NO. 657

General arrangement
(as built).

RECORDS DEPT.
LONDON.



© 2021

Lloyd's Register
Foundation

012734-012743-0058