

OFFICE COPY.

350 TON SEAGOING DUMB BARGE

AFTER PEAK & COUNTER, ALSO

STERN FRAME & RUDDER.

SCALES 1" 1/2" & 1 1/2" = ONE FOOT.

MATERIAL MARK A.P.

$$\text{mean } R = \frac{2\sqrt{4^2 + 1^2} + 4}{3} = 4.32$$

$$\text{Rudder Area} = 57.5 \times 3.5 = 20.1 \text{ ft}^2$$

$$D = 1'-0"$$

$$A \times D = 20.1 \text{ ft}^2$$

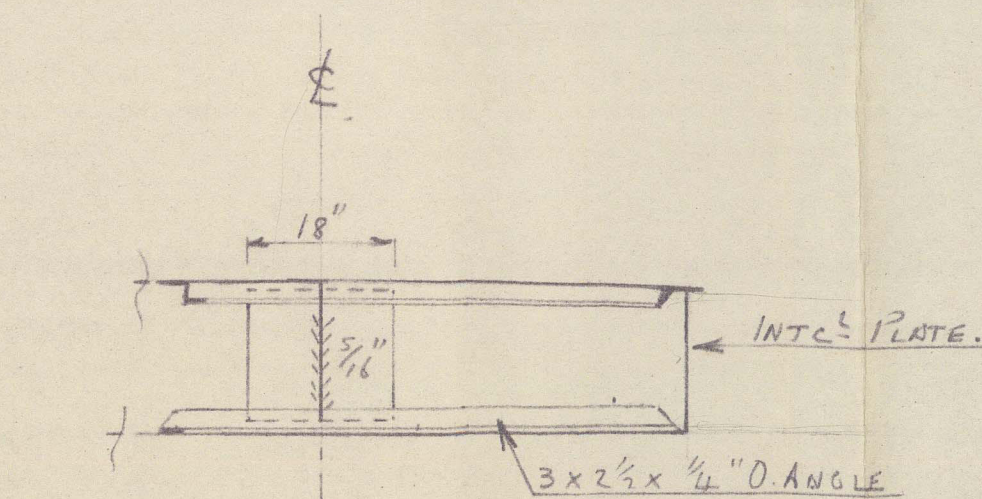
$$d = \sqrt[3]{\frac{20.1 \times 10^3}{5.3 \times \pi \times 12}} = 3.06$$

$$= 3.06$$

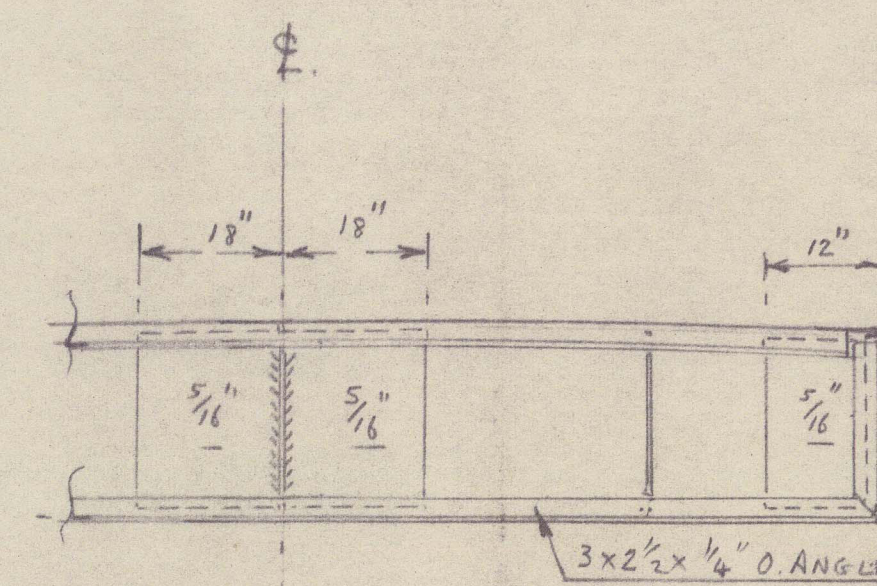
Proposed 3" ✓

$$\text{Bolt Dia} = \sqrt{\frac{3^3}{1.35 \times 6 \times 4.32}} = \sqrt{.75} = .87"$$

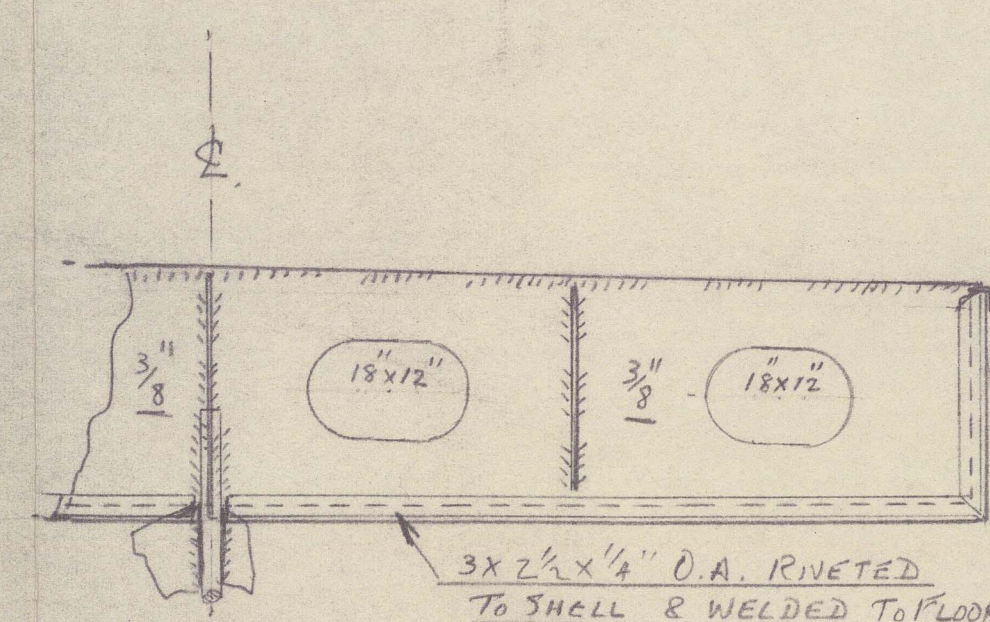
Proposed 1" ✓



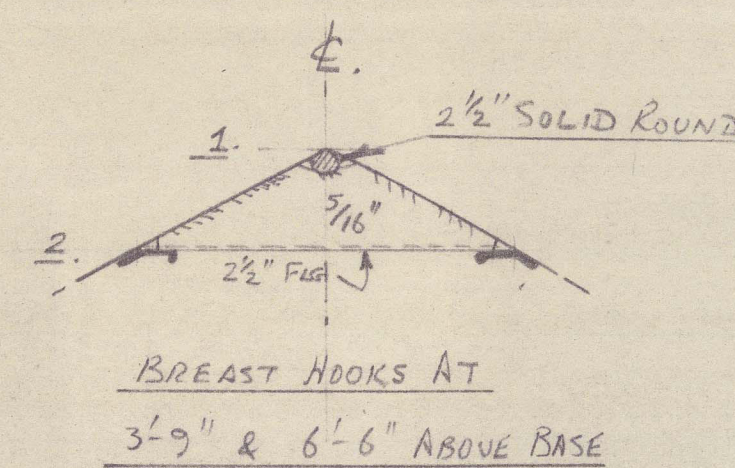
FRAME B' LOOKING AFT.



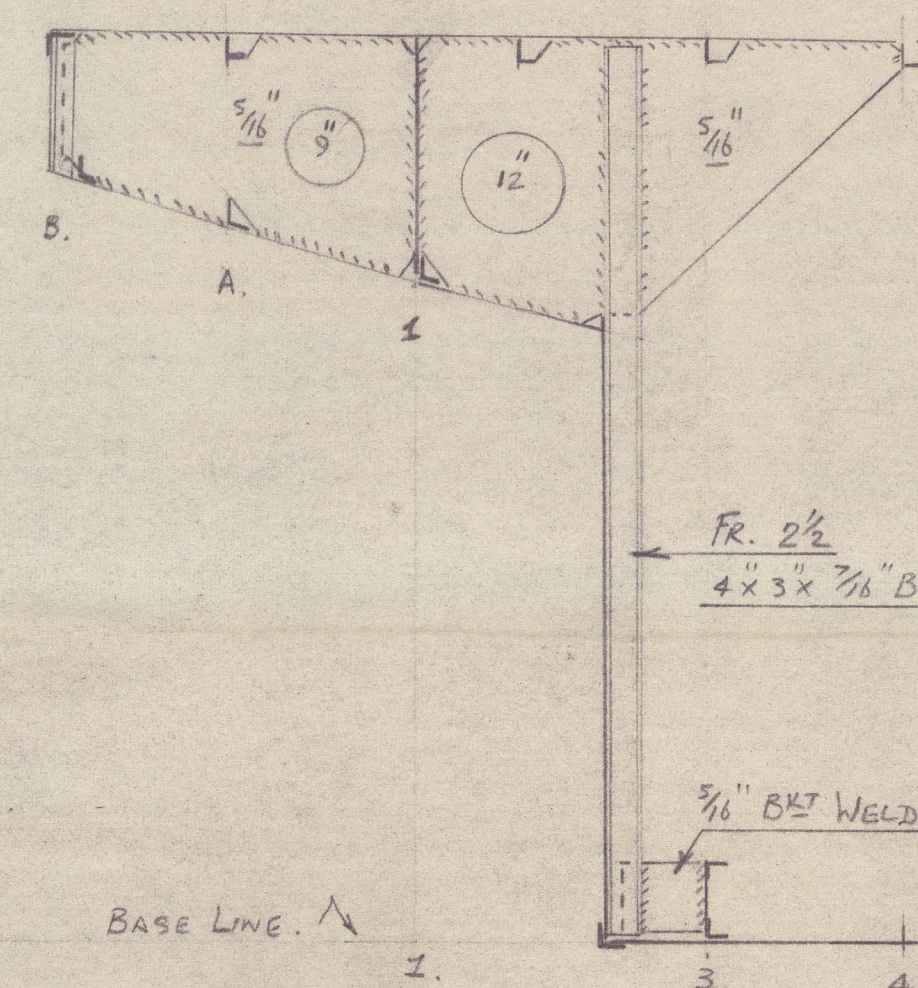
FRAME A' LOOKING AFT.



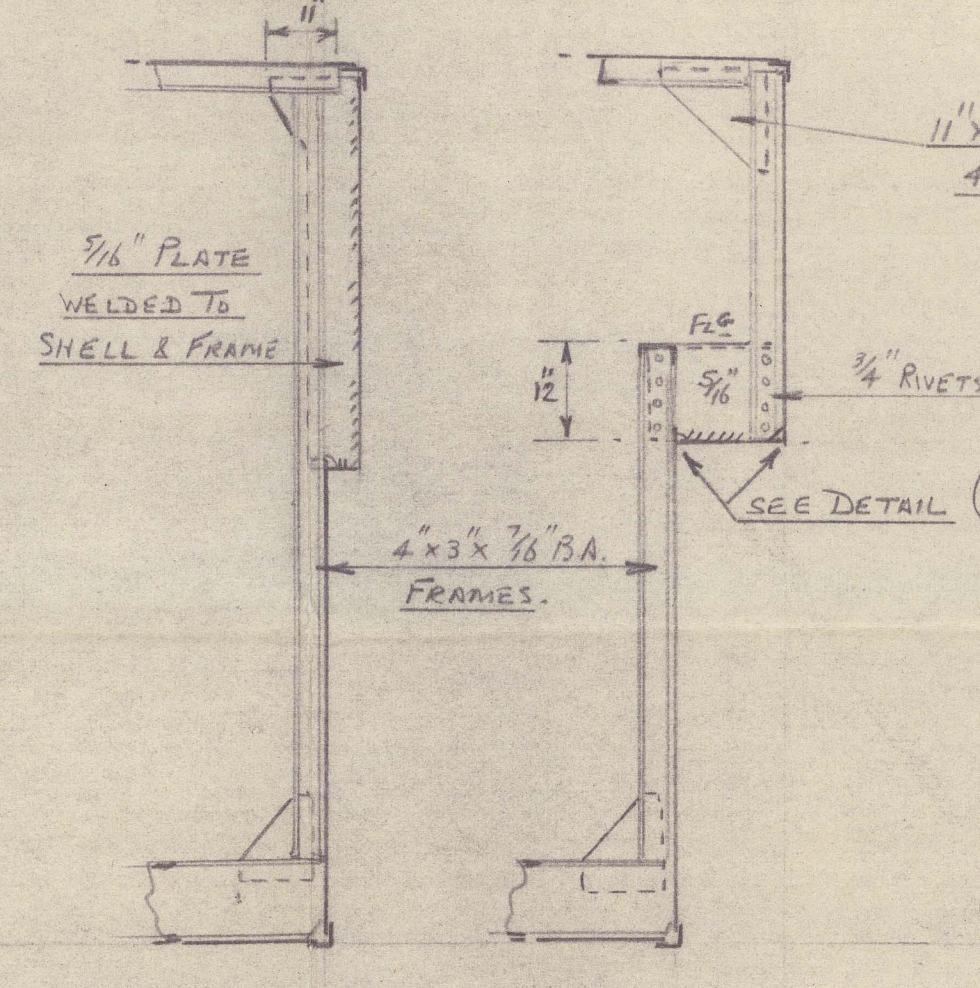
FRAME 1. TRANSVERSE FLOOR.  
LOOKING AFT.



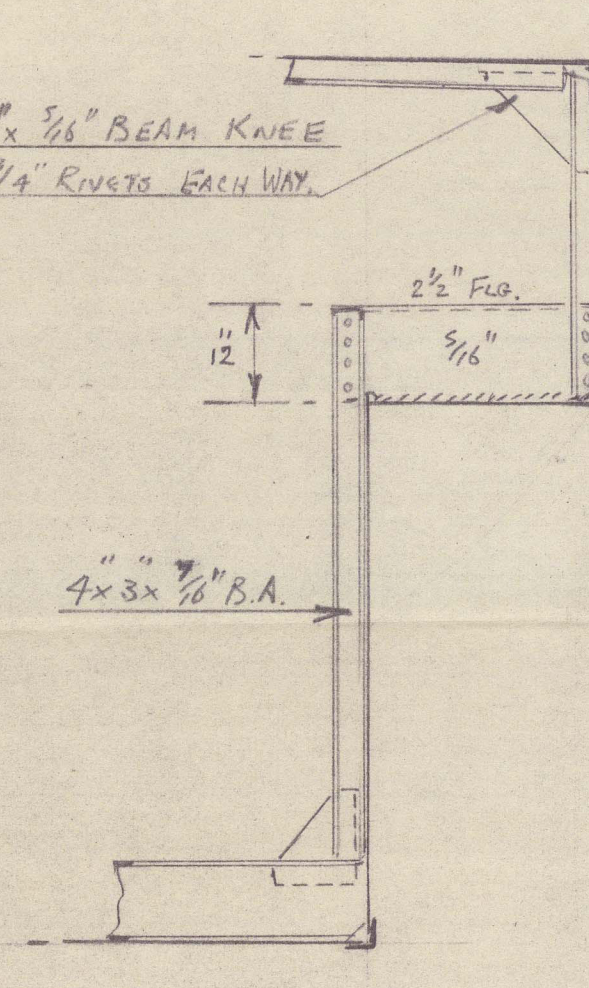
BREAST HOOKS AT  
3'-9" & 6'-6" ABOVE BASE



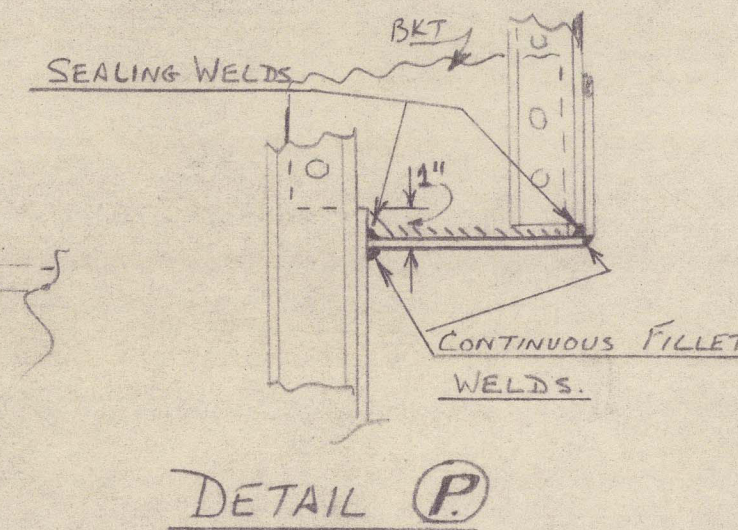
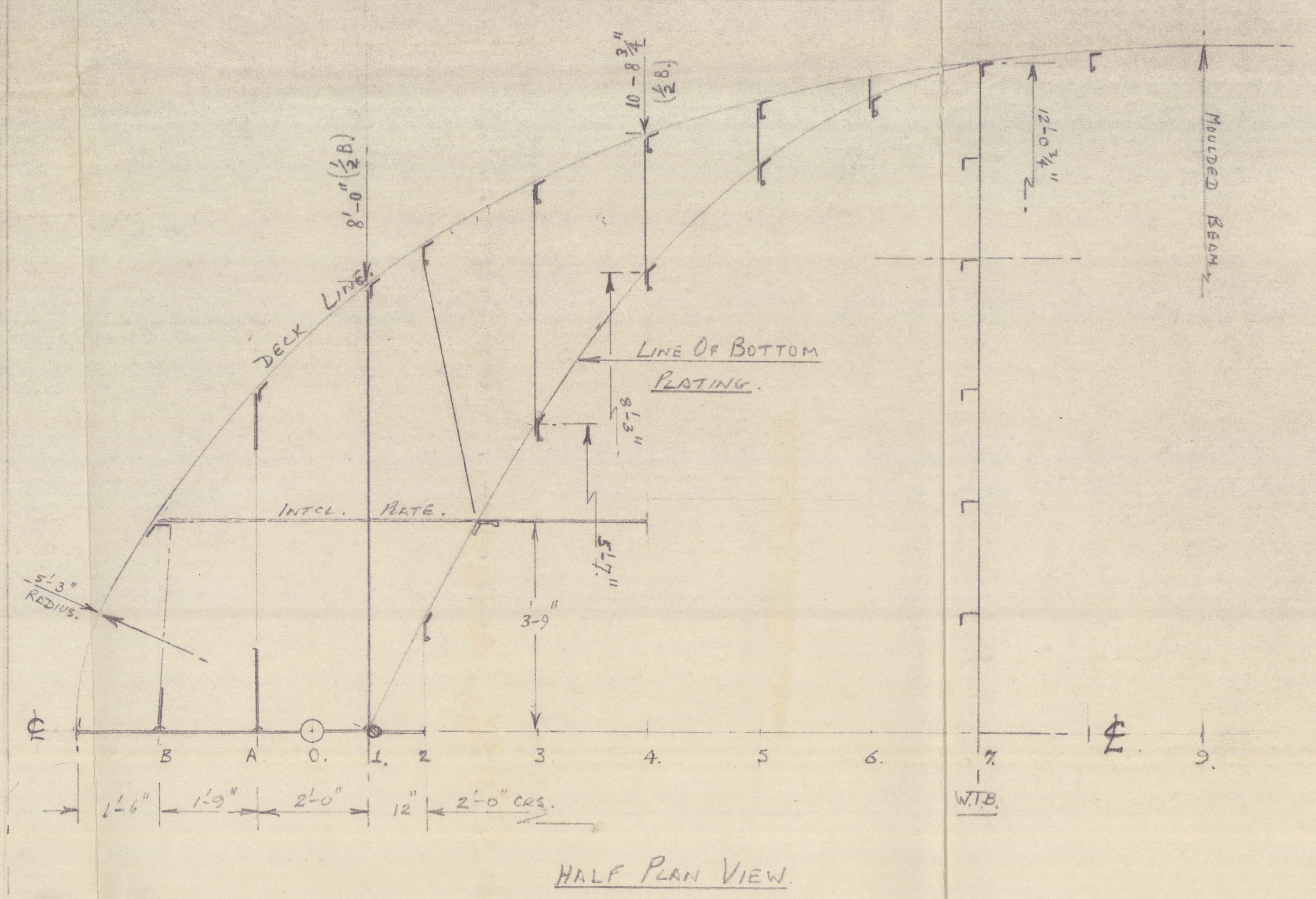
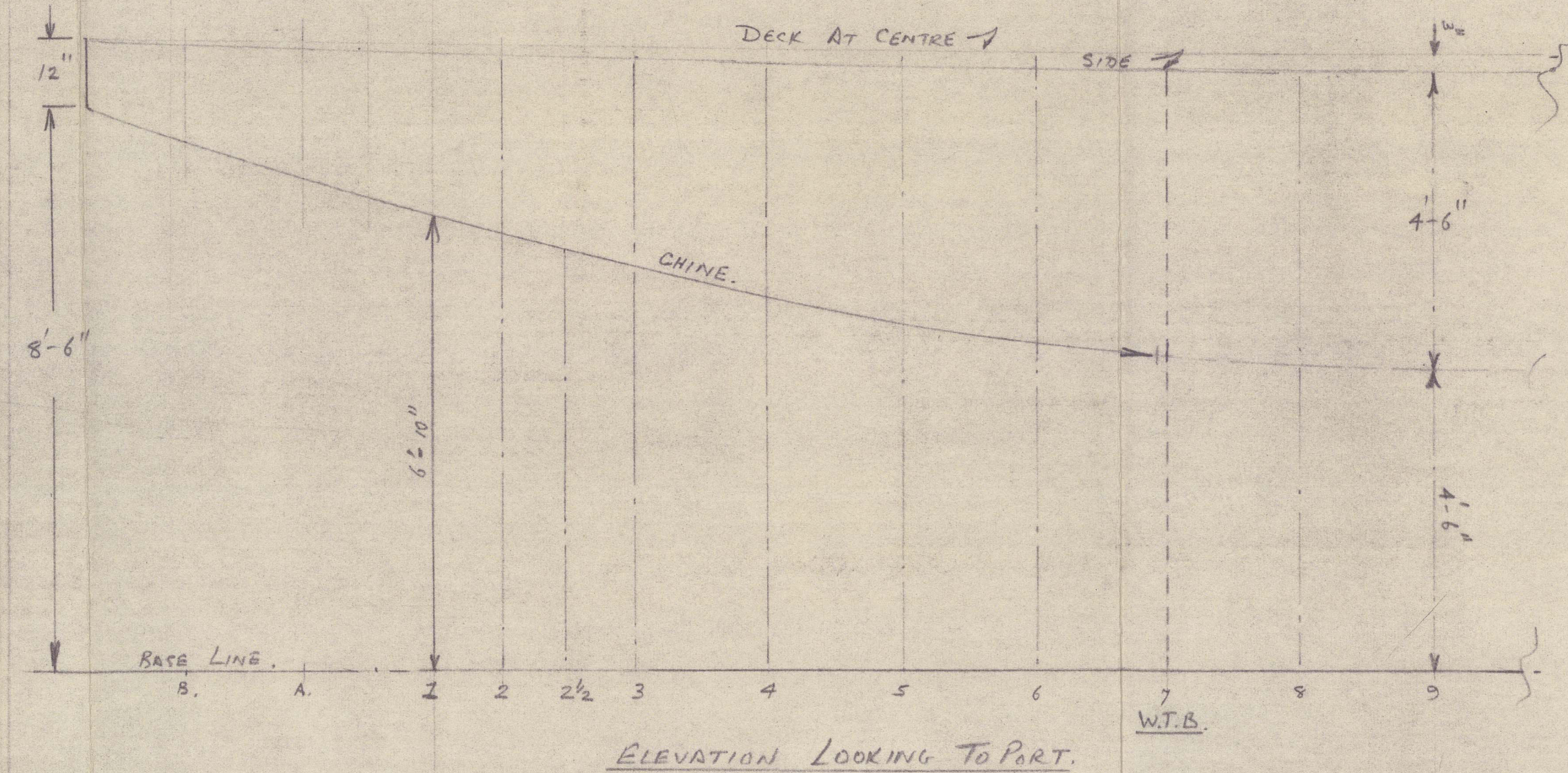
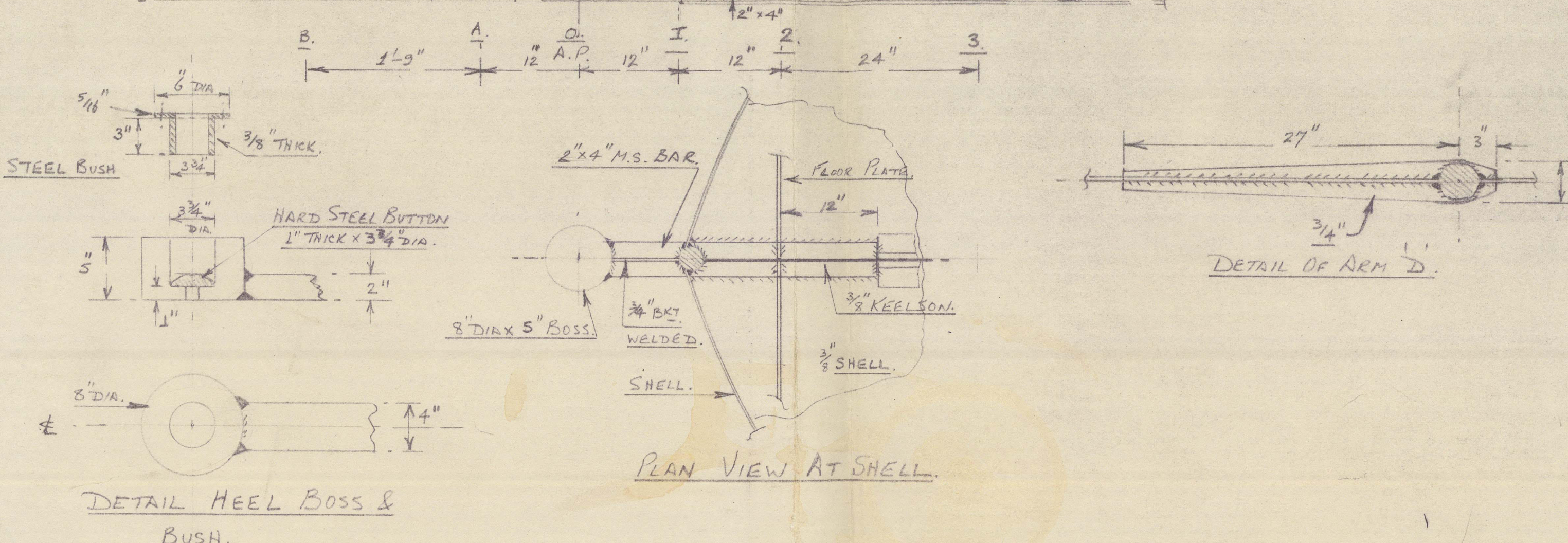
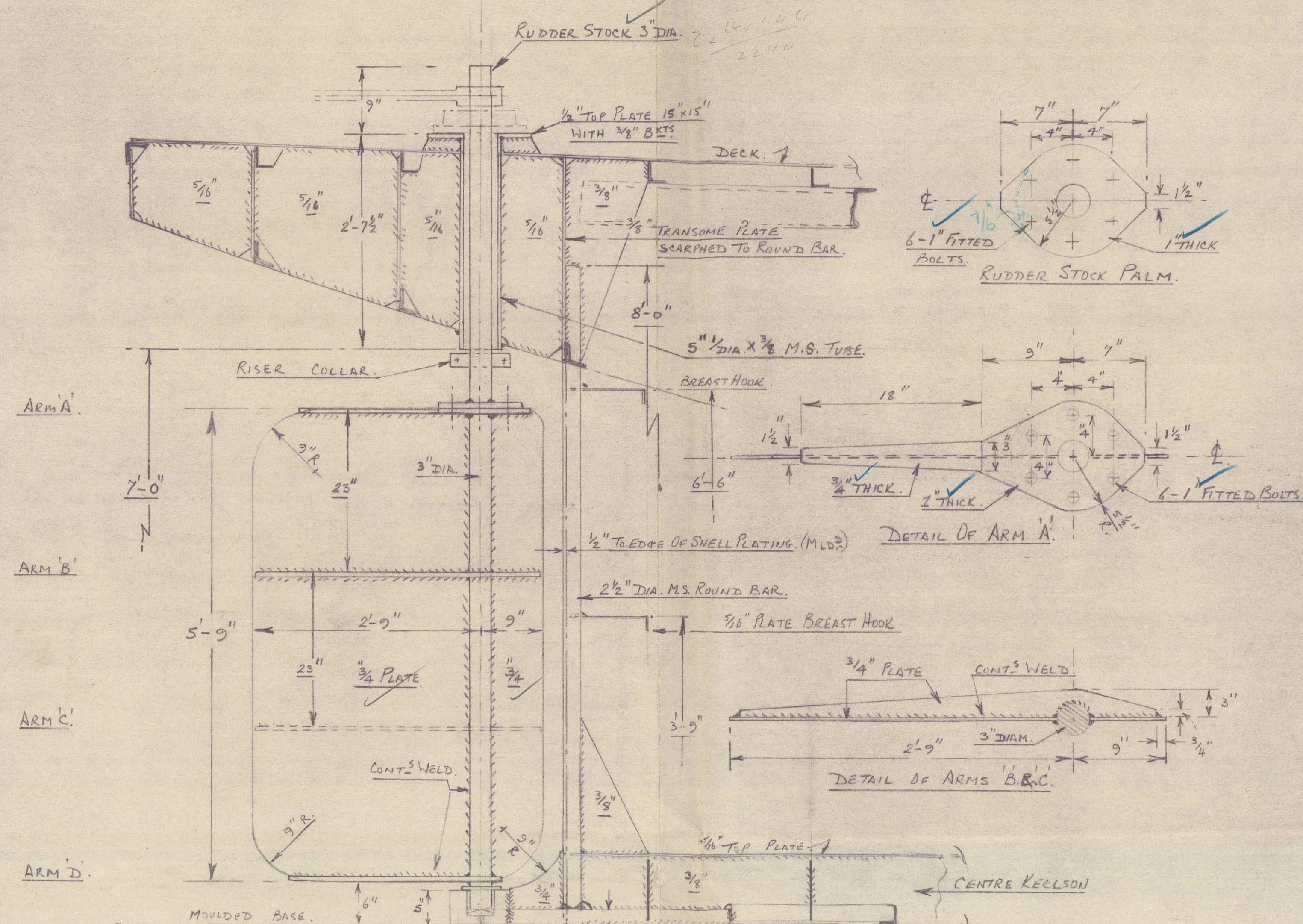
ELEVATION OF INTER COSTAL PLATE  
AT 3'-9" OF CL  
PORT SIDE LOOKING TO PORT.



FRAME 6.  
PORT SIDE LOOKING AFT.



FRAME 4. LOOKING AFT.  
FRAME 3 SIMILAR.



DETAIL P

G.H.W.  
29.3.61



" " " " ★  
UNITED SIX

29.3.61

RECORDS DEPT.  
LONDON.

(CARSTAIRS & CUMMINGS)

350 TONS BARGE

12

DES

BURLS, GORDON & ROGERS.

YARD NO

© 2021

AFTER PEAK & COUNTER, ALSO STERN FRAME & RUDDER.

012734.012743-0056

Lloyd's Register  
Foundation