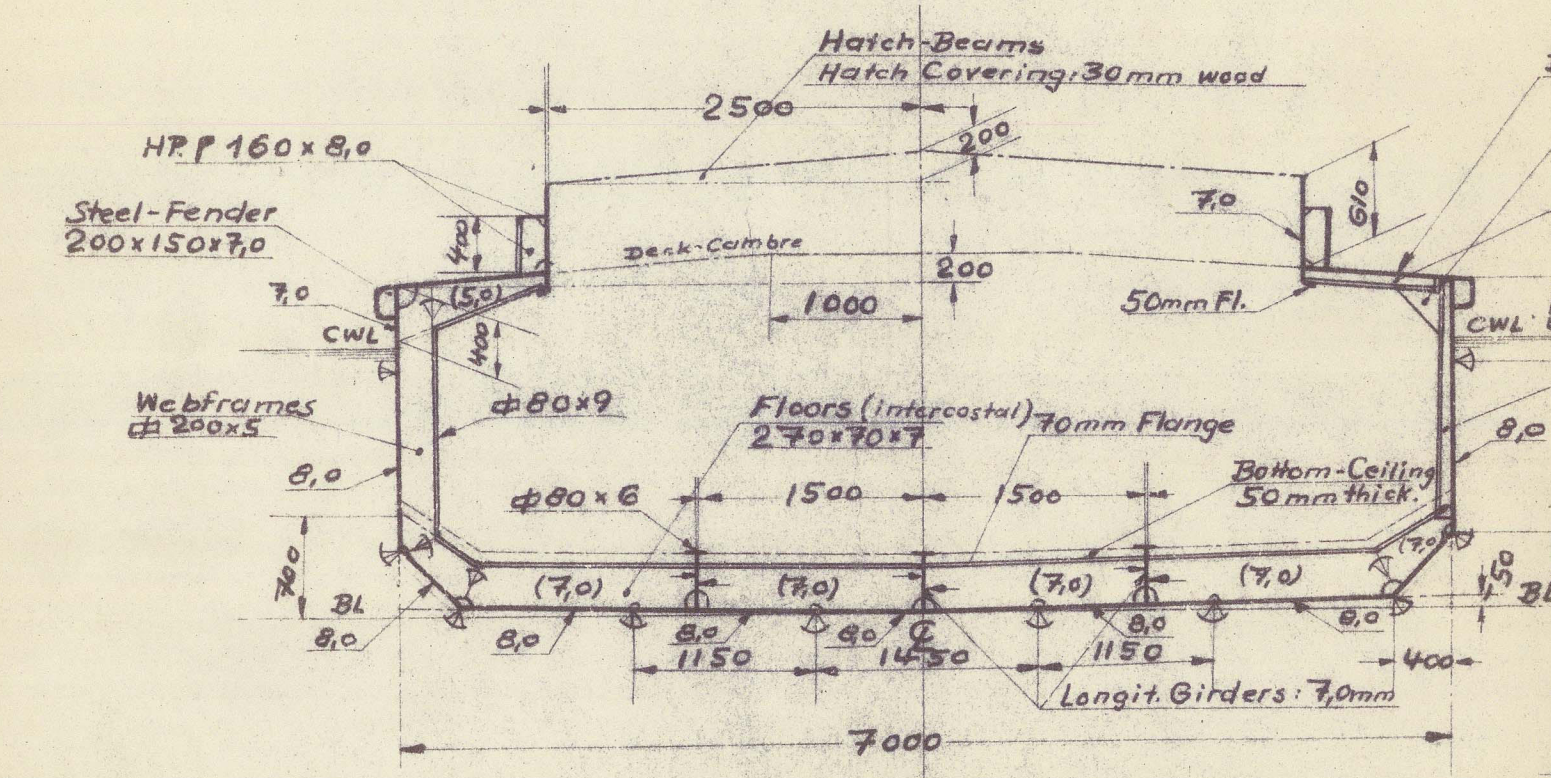
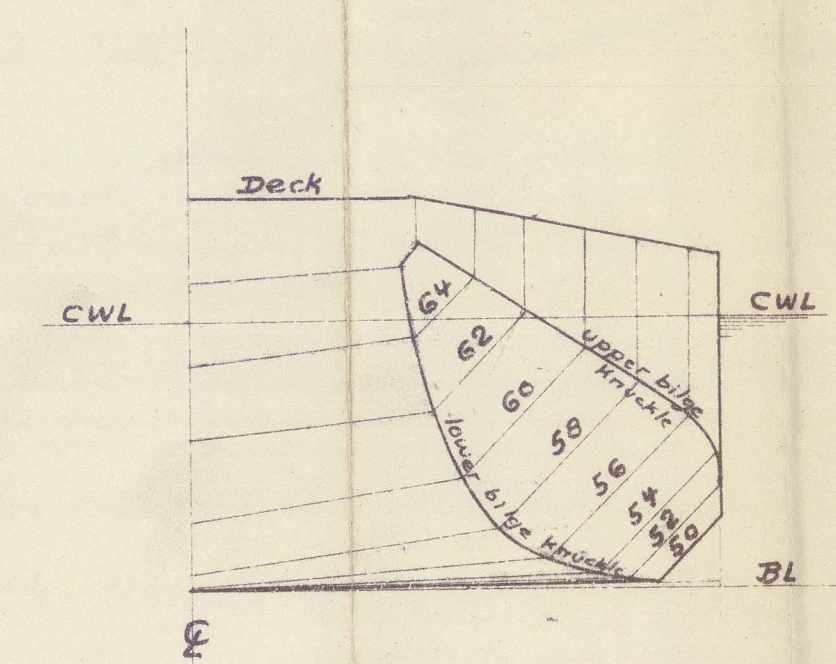


Class A For river and harbour service
with the descriptive notation Barge.

- Midship-Sections -
Fr. No. 20 Fr. No. 25

- 250tdw - Lighter -
Scale 1:50

- Foreward Frame Lines -



Plans of hatchway closing arrangements,
stemframe and rudder to be
submitted.


If the following or equivalent equipment
is supplied the figure I could be
assigned to the class.

- 1 stockless anchor at 2 1/2 cwt
- 30 fathoms of 5/8" stud link chain cable
- 15 fathoms of 5 1/2" circ. hawser.
- 7 fathoms of 9/16" dia head fast chain
or equivalent towline

Principal Dimensions:

Length over All	30.0m
Length betw. perp.	29.686m
Breadth over All	7.314m
Breadth moulded	7.00m
Height	2.20m
Draft (loaded)	1.80m
Load-Capacity	250ts
Displacement	314 ts

Castairs & Cumming Ltd.
Karachi/Pakistan

"⁴ UNITED SIX" 

RECORDS DEPT.
LONDON.

28

250 TON LIGHTER

CARSTAIRS - CUMMING LTD

YARD. NO.

CONSTRUCTION

 012734 012743 0055 ©2021
Lloyd's Register
FOUR

PLAN

