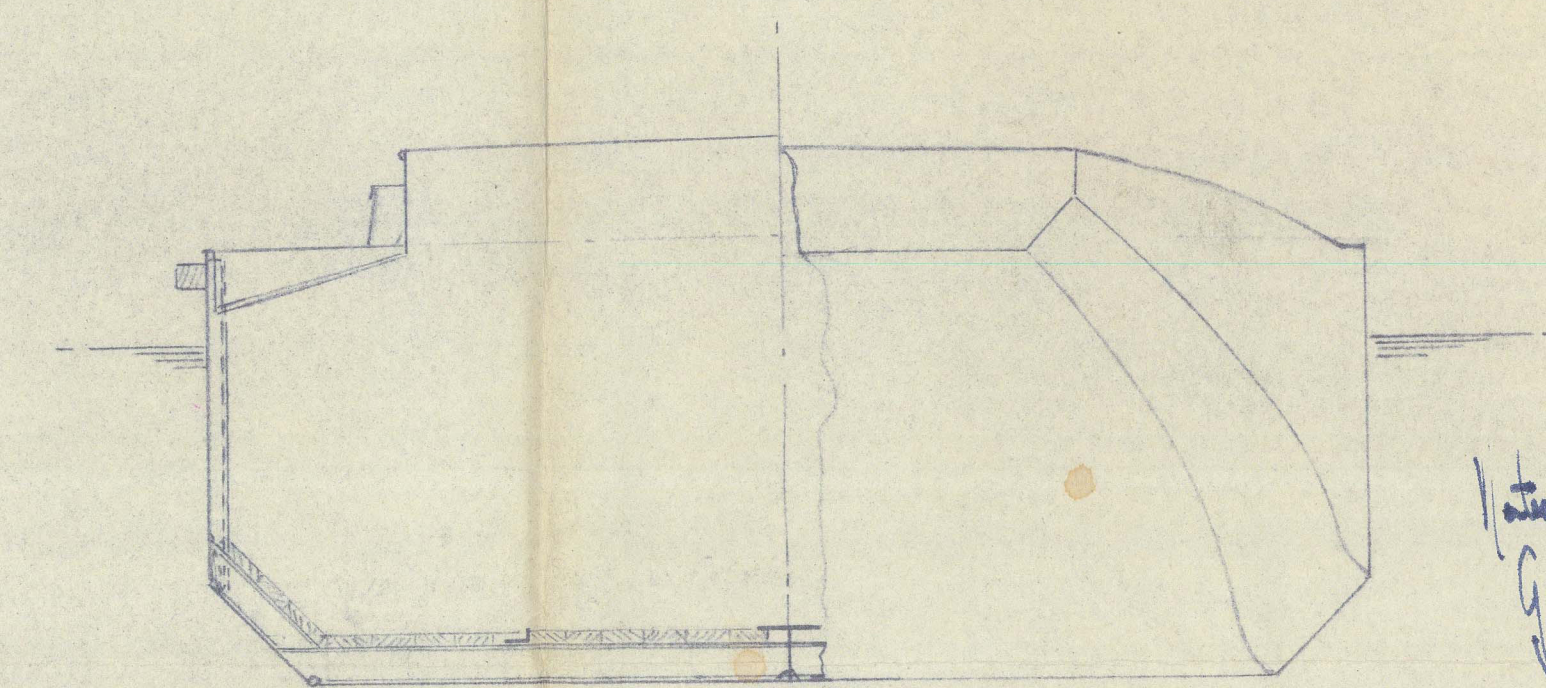
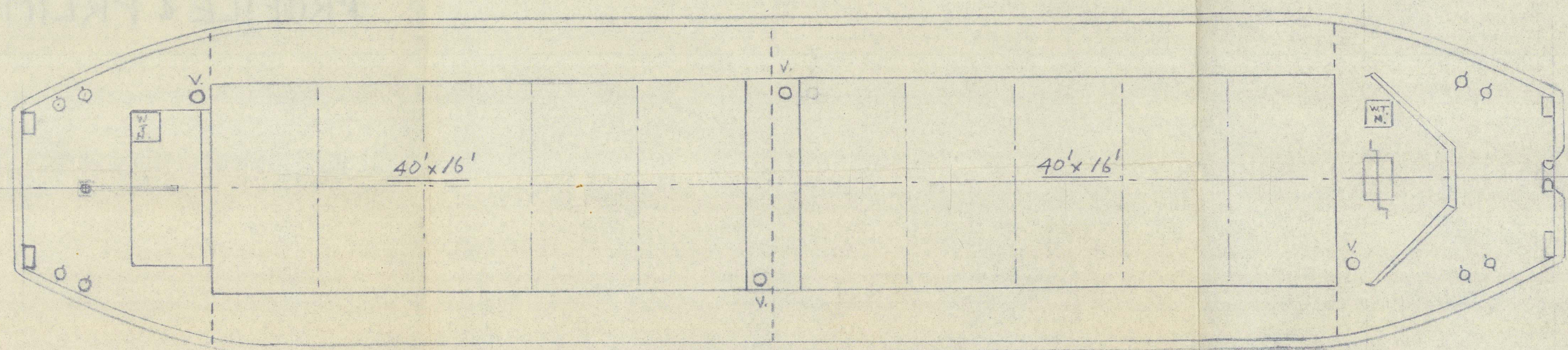
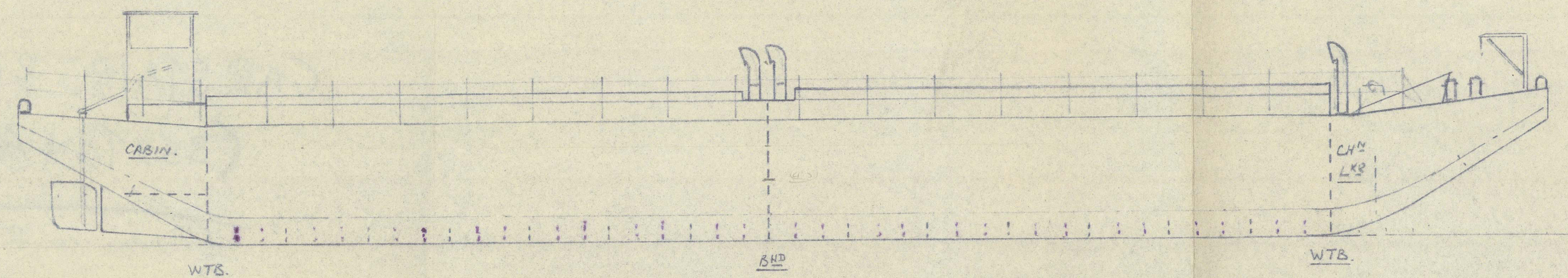


PROPOSED 350 TON SEAGOIDING BARGE
(ALL WELDED) FOR SERVICE AT CHITTAGONG.

SCALE $\frac{1}{8}" \& \frac{1}{4}" = \text{ONE FOOT.}$

DIMENSIONS L.O.A. - 115'-4"
MOULDED L.B.P. - 114'-0"
BEAM - 24'-0"
DEPTH - 9'-0"
DRAUGHT - 7'-3"



TYPICAL SECTIONS THRO'
HOLD & FORE END.

OFFICE

Noted.
G.H.W.
17.6.61



" UNITED SIX " ★

CAR STAIRS & CUMMING LTD
(350 TON ALL WELDED BARGE)

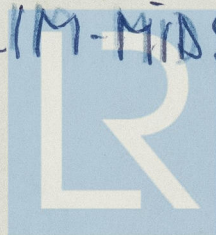
(ALL WELDED)

RECORDS DEPT.
LONDON.

9

7.6.61

PROFILE & PRLIM-MIDSHIP SECTION



Lloyd's Register
Foundation

012734, 012743, 0053

10