

GALILEO GALILEI
Rpt. C.11.
60039

Genoa Rpt. no 29568

LLOYD'S REGISTER OF SHIPPING

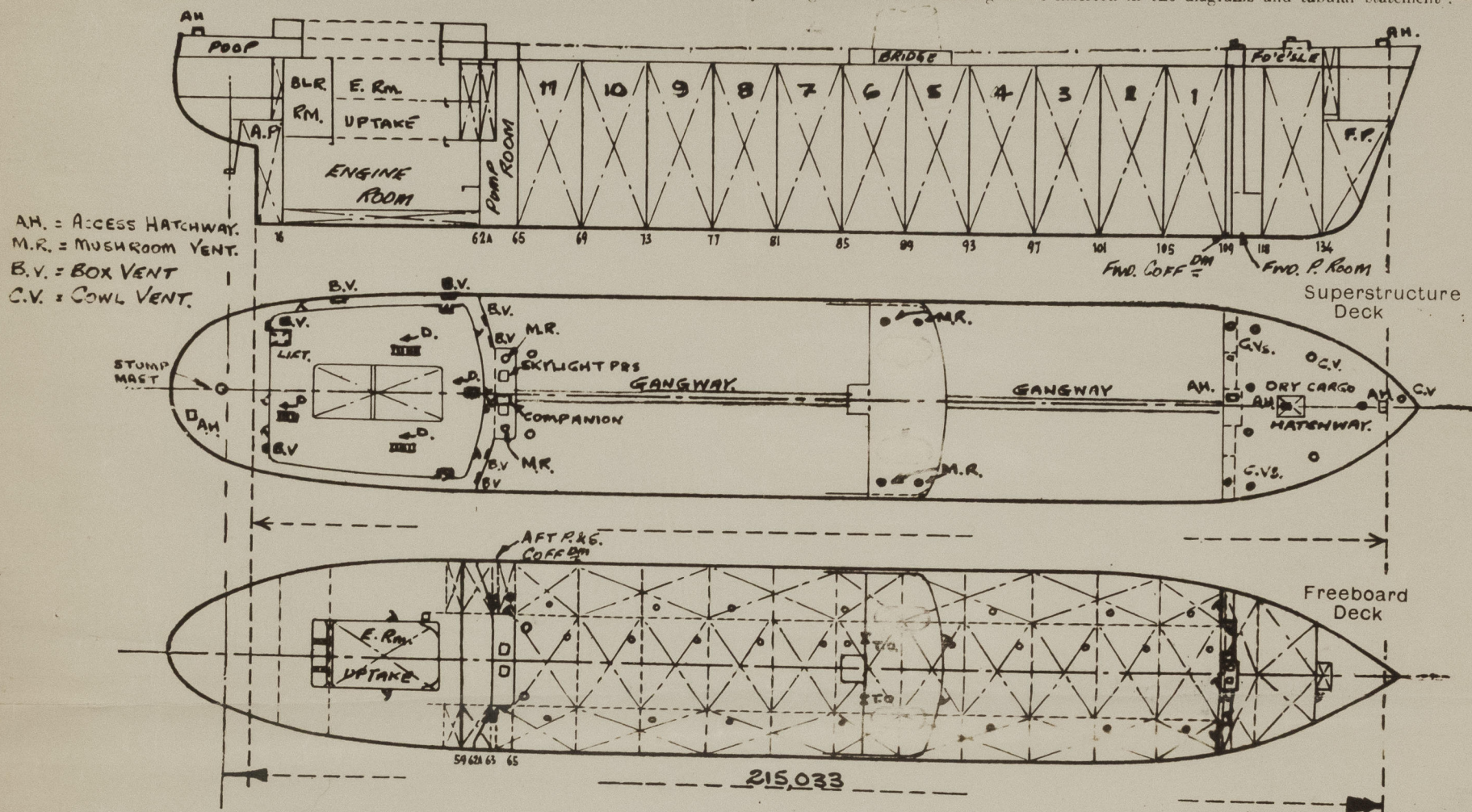
Index No. _____
(For London Office only.)

SURVEYS FOR FREEBOARD

(CONDITIONS OF ASSIGNMENT)

Ship's Name RAPHAEL Port of Survey SESTRI GENOA
Official Number 261 Surveyor's Signature E. Winter
Nationality and Port of Registry RUSSIAN. ODESSA. Date of Survey DURING CONSTRUCTION

Disposition and dimensions of superstructures, trunks, deckhouses, machinery casings and wood sheathing to be inserted in the diagrams and tabular statement :-



ALL DIMENSIONS IN METRIC UNITS & GIVEN IN MILLIMETRES.

Particulars of Superstructures, Trunks, Casings, Deckhouses.

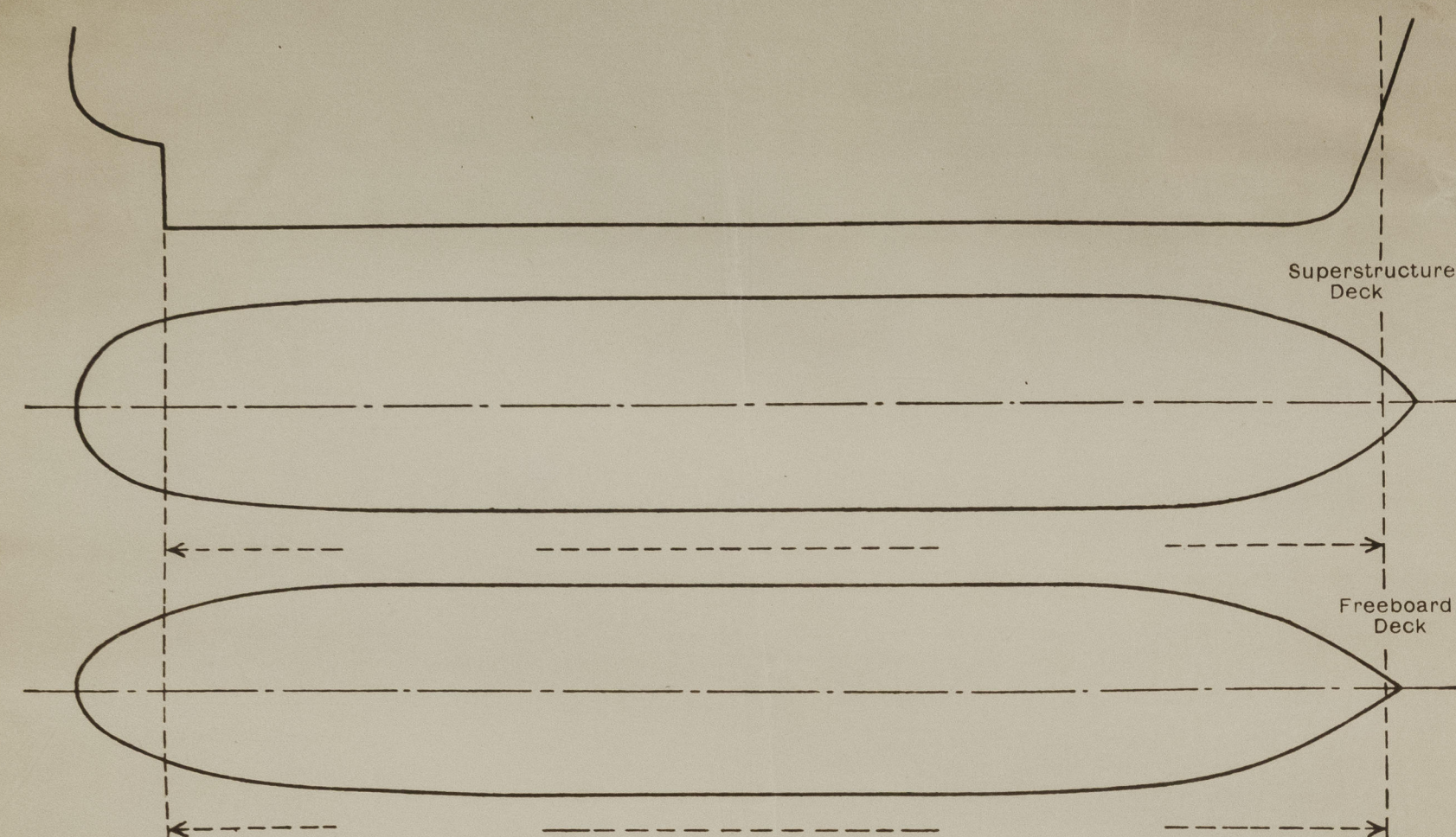
	Coaming	Plating	Stiffeners	Spacing	End Attachments of Stiffeners	Size of Openings	Height of Sills	Height, Beam to Beam
Poop Bulkhead ...	11.5	11.5	P 300 X 13 TOE WELDED.	850.	WELDED T. & B.	2 @ 1500 X 400	610	2570
Raised Quarter Deck Bulkhead ...								
Bridge, After Bulkhead ...	10.0	10.0	P 180 X 8 TOE WELDED	850	WELDED T. & B.	2 @ 1600 X 1200	460	3000
Bridge, Forward Bulkhead ...	10.5	10.5	P 280 X 13 TOE WELDED	850	WELDED T. & B.	2 @ 1500 X 400	460	3000
Forecastle Bulkhead ...	8.0	8.0	P 130 X 10.5 WELDED	610	WLD. LUG AT TOP.	4 @ 1500 X 400	460	2879
Trunk, Aft ...								
Trunk, Forward ...								
Exposed Machinery Casings on Freeboard or Raised Quarter Decks ...								
Exposed Machinery Casings on Superstructure Decks ...								
Machinery Casings within Superstructures not fitted with Class I Closing Appliances ...								
Deckhouse and Pump Room Entrances	FWD. 8.0 AFT. 11.5	8.0 11.5	1 130 X 10.5 WLD. P 300 X 13 TOE WELDED	610 850	WLD LUG & T. WLD T & B.	1500 X 400 1 FWD, 2 AFT.	610	2940 2910

Particulars of Closing Appliances (state if capable of being manipulated from both sides).

Poop Bulkhead ...	STEEL W.T. DOORS OPERATED FROM BOTH SIDES (CLASS 1.) HINGED.
Raised Quarter Deck Bulkhead ...	
Bridge, After Bulkhead ...	STEEL PLATES SECURED WITH HOOK BOLTS (CLASS 2.) PORTABLE, BOLTS SR 300.
Bridge, Forward Bulkhead ...	STEEL W.T. DOORS OPERATED FROM BOTH SIDES (CLASS 1.) HINGED.
Forecastle Bulkhead ...	STEEL DOORS OPERATED FROM BOTH SIDES (CLASS 1.) HINGED.
Exposed Machinery Casings on Freeboard or Raised Quarter Decks ...	
Exposed Machinery Casings on Superstructure Decks ...	
Machinery Casings within Superstructures not fitted with Class I Closing Appliances ...	
Deckhouse and Pump Room Entrances	FWD. STEEL DOOR OPERATED BOTH SIDES. (CLASS 1.) HINGED. AFT. STEEL W.T. DOORS OPERATED BOTH SIDES. (CLASS 1.) HINGED.

PARTICULARS OF PROTECTION TO OPENINGS, ETC.

The following diagrams should be used to indicate the positions of cargo and coaling hatchways, gangway, cargo and coaling ports, side scuttles, scuppers, ventilators, companionways, etc., which would affect the seaworthiness of the ship:—



Particulars of fiddle, funnel and ventilator coamings, engine room skylight and other openings in machinery casing tops and their means of closing:—

NO FIDDLE OPENINGS FITTED.

FUNNEL, VENT. COAMINGS & ENGINE ROOM SKYLIGHT STRONGLY CONSTRUCTED OF STEEL.
FUNNEL FITTED WITH STEEL DOOR, SKYLIGHT HINGED STEEL FLAPS FITTED WITH 8 IN N° FIXED STRONG GLASS BULLSEYES & SECURED W.T. WITH TOSSELS & PACKING.
 ON CASING TOP ACCESS HATCH PORTSIDE 420x420x200mm - 8" STEEL FITTED WITH HINGED STEEL W.T. COVER WITH TOSSELS AND PACKING.
 MACH & ACCOM VENTILATION AND AIR INTAKES ON CHASING SIDES ON DECK & OFF DECKS, FITTED WITH GRILLS AND HINGED STRONG STEEL COVERS SECURED W.T. WITH PACKING AND HINGED TOSSELS.

Particulars of Flush Bunker Scuttles:—

NONE.

Particulars of Companionways:—

(including those incorporated in deckhouses and masthouses)

AFTER PUMP ROOM:— STRONG STEEL COMPANIONWAY ON P. RM. TOP. STEEL DOOR, 1500x650 OPERATED BOTH SIDES. SILL 460. DOOR SECURED W.T. WITH CLIPS & PKG.

ALL COMPANIONWAYS TO POOP ACCOMMODATION & MACHY. CASINGS ARE IN A STRONG STEEL DECKHOUSE. 9 IN N° STEEL DOORS 1500x400 OPERATED BOTH SIDES, SILLS 460, AND 1 IN N° DOUBLE STEEL DOOR TO PROVISION LIFT, SECURED W.T. WITH CLIPS & PKG. OPENING 1800x1800 SILL 260. OPERATED FROM OUTSIDE ONLY AND A NOTICE DISPLAYED STATING THAT THESE DOORS ARE ONLY TO BE USED AT PORT.

FO'C'SLE DECK:— 6 IN N° 460 DIA C.V'S. COAMINGS WLD. 1230x10. ADEQUATELY STAYED. 4 IN N° 310 DIA C.V'S COAMINGS WLD. 915x8.5. ALL C.V'S CLOSED WITH STEEL COVERS SECURED W.T. WITH PKG & TOSSELS.

BRIDGE DECK:— 2 P&S 500 DIA MUSHROOM V'S. COAMINGS WLD. 460x10. CLOSED BY SCREW DOWN STEEL W.T. COVERS WITH PKG.

POOP DECK:— DERRICK STUMP MAST FITTED WITH HINGED STEEL FLAP. VENTS BUILT INTO DECKHOUSE SIDES & BULKHEADS, 760, 300 & 450x150. COAMINGS 460x10 WLD. OPENINGS CLOSED WITH HINGED STEEL COVERS SECURED W.T. BY PACKING & TOSSELS. 5 PORT, 3 STB.

PUMP ROOM:— 1 P&S 760 DIA. MUSHROOM VENTS, WLD. COAMINGS 2000x10 SUPPORTED WITH BRACKET'S

TOP AFT AND CLOSED W.T. WITH SCREW DOWN STEEL COVERS & PACKING.

FREE^{BD} DECK:— 1 P&S. AFT PUMP ROOM VENTS. 864 DIA WLD COLUMNS, 10 THICK SUPPORTED WITH BKTS. OPENING 3500 ABOVE DECK. 750 DIAx10 THICK TRUNKING AT POOP DECK LEVEL FITTED TO PUMP ROOM

AND PROVIDED WITH HINGED STEEL FLAP.

FOR^{WD} PUMP:— 2 - 600 DIA COWL VENTS. COAMINGS WLD 915x10. CLOSED WITH STEEL COVER SECURED W.T. WITH PKG. & TOSSELS.

Particulars of Air Pipes in exposed positions on freeboard, raised quarter, or superstructure decks:—

FO'C'SLE DK:— 1 P&S, 1 CR.— 250 DIA. 1 P.— 150 DIA. AT LEAST 460 ABOVE DK TO OPENING.

FBD. DK:— 1 P&S, 250 DIA. 1 P&S, 200 DIA. 2 P&S, 1 CR.— 150 DIA. 915 ABOVE DK TO OPENING.

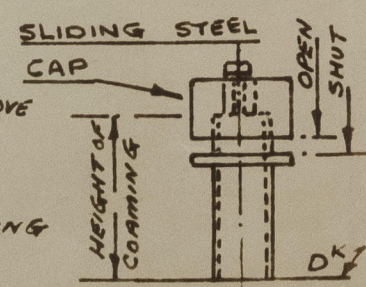
POOP. DK:— 1 P.— 150 DIA. 1 P&S— 125 DIA, 2 P, 15.— 100 DIA. 5 P, 25.— 80 DIA.

AND 759 1 P.— 65 DIA, 5 P, 35.— 50 DIA. AT LEAST 460 ABOVE DK TO OPENING

BOAT DK:— 1 S.— 250 DIA. 460 ABOVE DK. TO OPENING.

CARGO TANKS HAVE COMMON VAPOUR LINE WITH AIR APES LED UP FOR^{WD} MAST AND P&S. AMIDSHIP DERRICK MASTS.

ALL AIR APES FITTED WITH STEEL CAPS (AS SKETCH) AND THOSE FROM OIL TANKS OR COFF^{OMS} FITTED WITH GAUZE.



Particulars of Gangway Cargo and Coaling Ports:—

Raphael

NONE.

Particulars of Scuppers and Sanitary Discharge Pipes:—

EXPOSED FBD. DK. SCUPPERS:— 12 P&S 100 DIA x 1/4" THICK ELBOW PIECES DIRECT OVERBOARD DISCHARGE.
FO'C'SLE DK. SCUPPERS:— 2 P&S. 80 DIA DIRECT DISCHARGE ONTO EXPOSED FBD. DECK.

BRIDGE DK SCUPPERS:— 2 P&S 80 DIA DIRECT DISCHARGE ONTO EXPOSED FBD. DECK.
EXPOSED POOP DK SCUPPERS:— 5 P&S, 1 1/2 80 DIA DIRECT OVERBOARD DISCHARGE.

SANITARY DISCHARGES FROM ACCOMMODATION WITHIN POOP ABAFT FRM N° 14 HAVE OVERBOARD DISCHARGE AT FRM. N° 10/11 P&S FITTED WITH BRASS S.D.A.N.R. VALVE OPERATED ABOVE FBD. DECK & FITTED WITH OPEN/SHUT INDICATOR.
ALL SOIL APES FROM AFTER ACCOMMODATION HAVE COMMON DISCHARGE IN E. RM. 100 DIA BRASS S.D.A.N.R. VALVE P&S
ALL SANITARY DISCHARGES FROM AFT. ACCOMMODATION EXCEPT ABAFT FRM N° 14 HAVE COMMON DISCHARGE IN E. RM 100 DIA S.D.A.N.R. VALVE (BRASS) P&S. HOSPITAL ON BOAT DK HAS SEPARATE DISCHARGE 100 DIA BRASS S.D.A.N.R. VALVE IN E. RM PORT.

THERE ARE NO DISCHARGES FROM SPACES BELOW THE FREEBOARD DECK FOR SOIL OR SANITARY SERVICES.

Particulars of Side Scuttles and Deadlights:—

NO SIDE SCUTTLES FITTED BELOW FREEBOARD DECK.

POOP 'TWEEN DECKS:— 12 P&S 400 DIA OPENING TYPE.

GP 75. 300 DIA " "

BRIDGE 'TWEEN DECKS:— 3 P&S 400 DIA " "

1 P&S 400 DIA IN FOR^{WD} BULK^{HD} OPENING TYPE.

FOR^{WD} PUMP ROOM:— 1 PORT 400 DIA IN AFT BULK^{HD} " "

ALL SIDE SCUTTLES STRONGLY CONSTRUCTED OF BRASS WITH HINGED CAST STEEL DEADLIGHTS FITTED.

Vertical distance of Sill of lowest Side Scuttle above top of keel

Distance from amidships to centre of lowest Side Scuttle

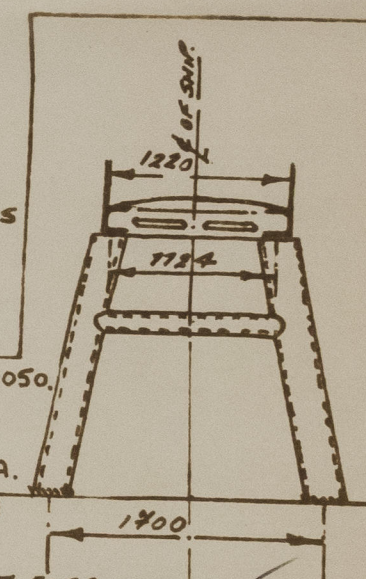
Particulars of Guard Rails and Bulwarks:—

FREEBOARD, FO'C'SLE & BRIDGE DECKS INCLUDING F.R.A. GANGWAYS:—
STANCHIONS 1100 HIGH SPD. 1400 FITTED WITH 3 RAILS. STAYS FITTED APPROX EVERY 4TH STANCHION.
FOR^{WD} OF FRM N° 10. BULKHEADS, PLATING & RAIL 1160x7 STAYS 1160x7 SPACED 1520
ABFT OF FRM N° 10. GUARD RAILS AS DETAILED ABOVE.

Particulars of Gangways, Lifelines, etc.:—

FORE & AFT GANGWAY FITTED AT LEVEL OF SUPERSTRUCTURES BETWEEN POOP & BRIDGE AND BRIDGE & FO'C'SLE, AND OF ALL WELDED CONSTRUCTION.

SUPPORTS:— TUBES 219 DIA x 9.1 THICK SPD. 3050.
TRANSV. TUBE 108 DIA x 7.1 THICK.
LONG^{TD} PLATE: 420x10 FLANGES 130.
SINGLE DIAGONAL TUBE BRACING F.R.A. FITTED EVERY 3RD & 4TH SUPPORT SPACE
P&S. 76 DIA x 6 THICK
PLATFORM: PLATE 5 THICK. BEARERS AT SUPPORTS I 220x80x9 ELSEWHERE T 80x80x9 SPD 1000.



Particulars of Freeing Arrangements.

Length of Bulwark	Height of Bulwark	Size of Freeing Ports	Number each side	Area each side	Rule area each side
After Well ...	} OPEN RAILS.				
Forward Well ...					
State position of each freeing port ...					
(P. and A. position and height above deck edge)		{ After Well :— Forward Well :—			
State whether the freeing ports are fitted with shutters, bars, or rails, and give particulars of such :—					
Additional area where sheer is less than standard.					

PARTICULARS OF PROTECTION TO OPENINGS, ETC.

FBD. DECK.						FO'C'SLE DECK			POOP DECK
HATCHWAYS ON FREEBOARD AND SUPERSTRUCTURE DECKS.									
Description of Hatchway	(22 IN NO.) CARGO TANKS	(1 P&S.) COFFERS FORM	(1 P&S.) DEEP TKS. AFT	(1 P.) DEEP TK. AFT	(1 P&S.) DEEP TKS. FWD.	F. PK. STORE.	DRY CARGO.	PMP RM. TOP.	ROPE STORE.
Dimensions of Hatchway	1220 DIA	650 DIA	835 DIA	650 DIA	615 DIA	900 x 900	4000 x 4297	900 x 900	580 x 580
COAMINGS	Height above Deck	760	260	260	260	610	610	660	460
	Thickness	12	12.5	12	12.5	10	11	10	10
	Stiffeners	-	-	-	-	HOR ^{2L} FLAT	180x10	HOR ^{2L} FLAT	-
	Brackets, Stays	-	-	-	-	60x10	60x10	60x10	-
HATCH BEAMS	Number	/	/	/	/	COVER STRENGTH WITH WLD 80x8 FLATS SPD. 460.	HOR ^{2L} CONT VER ^{2L} SPD. 680.	BOLTED 10 THICK COVER PLATE STIFFENING 90x10 BELTS 1500 80x10x4 1/2	A NOTICE STATING THAT THIS HATCH IS TO BE KEPT CLOSED AT SEA IS ATTACHED TO THE COVER.
	Spacing	/	/	/	/		200x8		
	Scantling and Sketch	/	/	/	/		90x10	BEAM SPD. 820 F&A'S SPD. 714.	
	Bearing Surface	/	/	/	/			ACCESS 900x 900 HATCH FITTED IN COVER. W.T. HINGED 8 THICK SECURED BY 8 TOGGLES	
FORE AND AFTERS	Number	/	/	/	/				
	Spacing	/	/	/	/				
	Unsupported Lengths	/	/	/	/				
	Scantling* and Sketch	/	/	/	/				
HATCH COVERS	Material	STEEL.	STEEL.	STEEL.	STEEL.	STEEL.	STEEL.	STEEL.	STEEL.
	Thickness	12	12.5	17	12.5	17	8	8	8
	How fitted	HINGED	HINGED	BOLTED	HINGED	BOLTED	HINGED	HINGED	HINGED
	Bearing Surface	O.T. WITH NEOPRENE PKG.	W.T. WITH RUB. PKG.	O.T.	W.T. WITH RUB. PKG.	W.T.	W.T. WITH PKG.	W.T. WITH PKG.	W.T. WITH PKG.
Spacing of Cleats	8-23 DIA	5-23 DIA	-	5-23 DIA	-	8-15 DIA	26-24 DIA	8-15 DIA	2-15 DIA
Number of Tarpaulins...	TOGGLES SPQ 480.	TOGGLES.	-	TOGGLES.	-	TOGGLES SPD 460	TOGGLES SPD 680	TOGGLES SPD 460	TOGGLES

*Are wood fore and afters steel shod at all bearing surfaces?
Are battens and wedges efficient and in good condition?
Are tarpaulins in good condition and in accordance with rule requirements?
Are lashings provided in accordance with rule requirements?
Are wood covers fitted with galvanised end bands?

- *Are wood fore and afters steel shod at all bearing surfaces?
- Are battens and wedges efficient and in good condition?
- Are tarpaulins in good condition and in accordance with rule requirements?
- Are lashings provided in accordance with rule requirements?
- Are wood covers fitted with galvanised end bands?

Particulars of any special features:— (Timber Deck-cargo Fittings, Skylights, Sewage Systems, Ash Ejectors, Rubbish Shoots, etc.)

TANK NOS 5 CR & 4 WING P&S. ARE PERMANENT BALLAST TANKS. HATCHWAY COAMINGS ARE AS FOR CARGO TANKS BUT 12 THICK TOP PLATE IS RIVETED W.T. & FITTED WITH AN ACCESS MANHOLE 620 X 470 CLOSED W.T. WITH A HINGED 8 THICK COVER SECURED WITH 4 IN NO. 20 DIA TOGGLES & PKG.

BUTTERWORTH OPENINGS:— 318 DIA FITTED ON FBD DECK. 84 ON EXPOSED DECK, 6 WITHIN FO'C'SLE, 2 IN AFT. PUMP RM, 4 WITHIN BRIDGE, FITTED WITH. O.T. STEEL COVERS SECURED BY 4-15 DIA TOGGLES & PACKING, ADEQUATED DECK COMPENSATION FITTED. COAMINGS 280 X 14.

SEARCHLIGHT OPENING:— IN STEM PLATING INSIDE FO'C'SLE. HINGED STEEL COVER ADEQUATELY STIFFENED, 1100 DIA, SECURED W.T. WITH RUBBER PACKING & 6 TOGGLES.

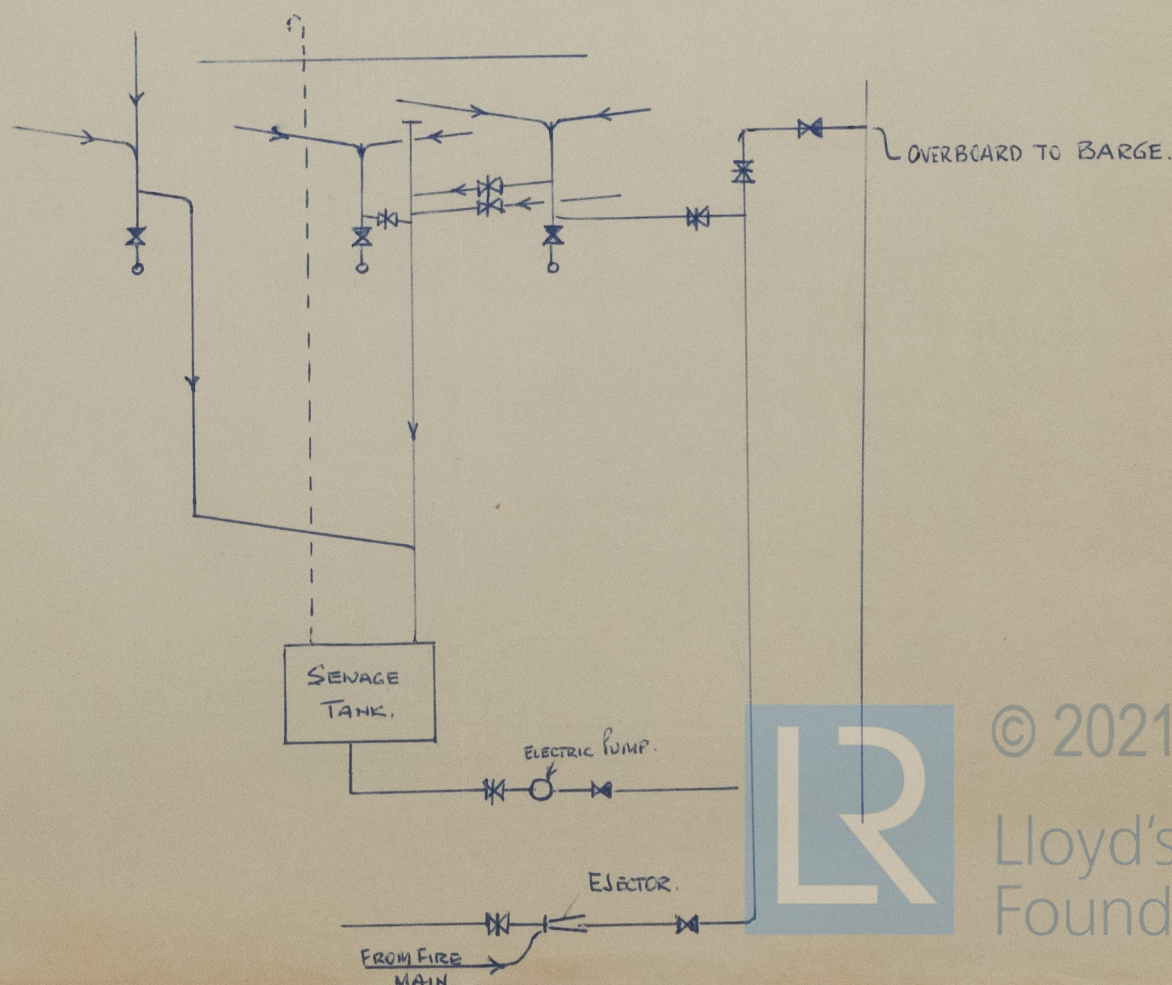
RUBBISH SHOOT. :— FITTED P.S. FROM GALLEY IN POOP DECKHOUSE. 16 THICK M.S. TUBE FITTED WITH HINGED STEEL W.T. COVER SECURED BY TOGGLES. WEIGHTED STEEL FLAP FITTED.

AFTER PUMP ROOM SKYLIGHTS. :— 2 IN NO FITTED ON PUMP ROOM CASING TOP. STRONGLY CONSTRUCTED OF STEEL WITH HINGED STEEL W.T. FLAPS SECURED WITH TOGGLES AND FITTED WITH STRONG FIXED GLASS BULBSYES. COAMINGS 460 HIGH.

SEWAGE SYSTEM. :— SOIL & SANITARY SERVICES FOR AFTER ACCOMMODATION ARE PROVIDED WITH A SEPTIC TANK AND DISCHARGE SYSTEM WITH HOSE CONNECTION ABOVE EXPOSED FBD. DK. FOR DISPOSAL OF SEWAGE IN PORT.

DIAGRAMMATIC ARRGT.
OF
SEWAGE SYSTEM.

- SDAN.R VALVE
- SCRENDOWN VALVE.



© 2021

Lloyd's Register
Foundation