

EM. 3. CEYLON. 8644.  
TUG :- "KANCHADEVA."

STERNFRAME & RUDDER ~ AS BUILT.

SCALE:- 1 1/2" TO 1 FOOT & AS MARKED

DIMENSIONS:- 55'-0" B.P x 15'-0" BREADTH MLP x 7'-0" DRAFT

MAIN ENGINE:- WIDDOP TYPE E.M.B. 5

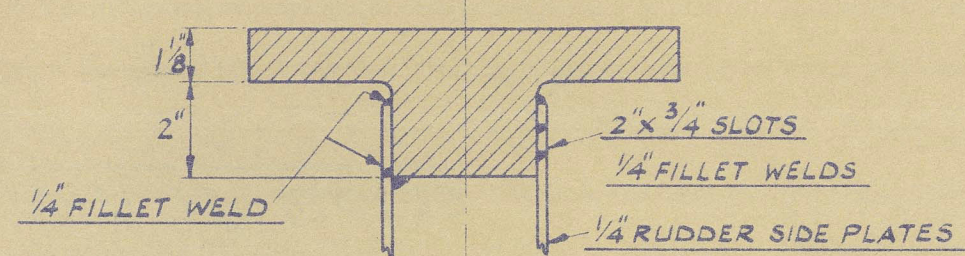
RUDDER AREA:- 11-88 Sq.Ft.

A x D = 13.63      SPEED:- 9 KNOTS

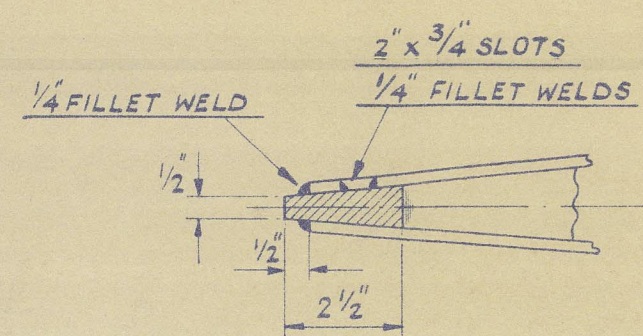
DIA. OF STOCK:- RULE DIA.<sup>R</sup>  $2.7'' + \frac{1}{2}'' = 3.2''$  (ORDERED  $3\frac{1}{2}''$ )

SCANTLING OF STERNFRAME:- RULE CROSS SECTIONAL AREA +15% = 9.625 Sq. Ins.

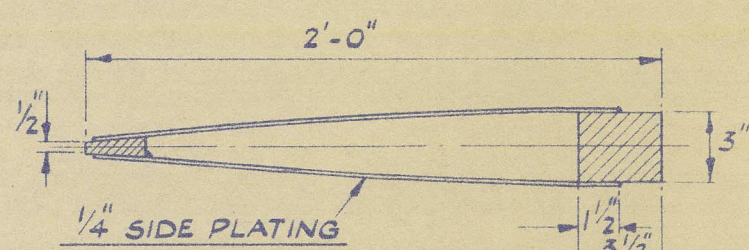
STERNFRAME RUDDER FRAME RUDDER STOCK &  
GUDGEONS TO BE FORGINGS OF WELDABLE QUALITY  
CONTAINING NOT MORE THAN 0.23% CARBON



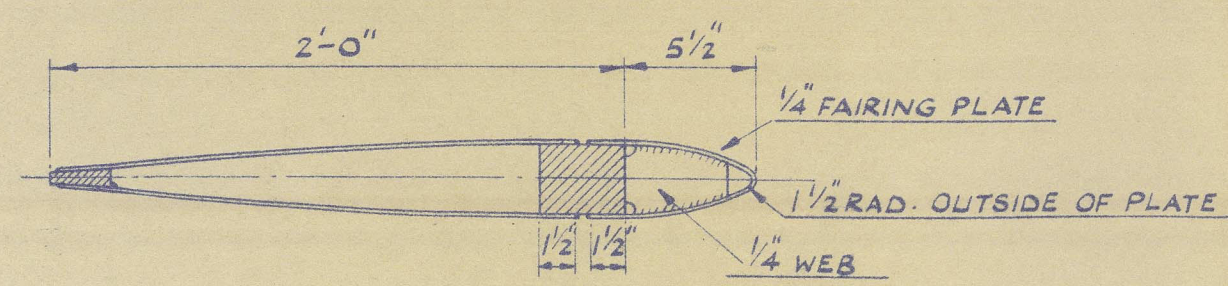
SECTION THRO' X-X  
SCALE:- 1/4 FULL SIZE



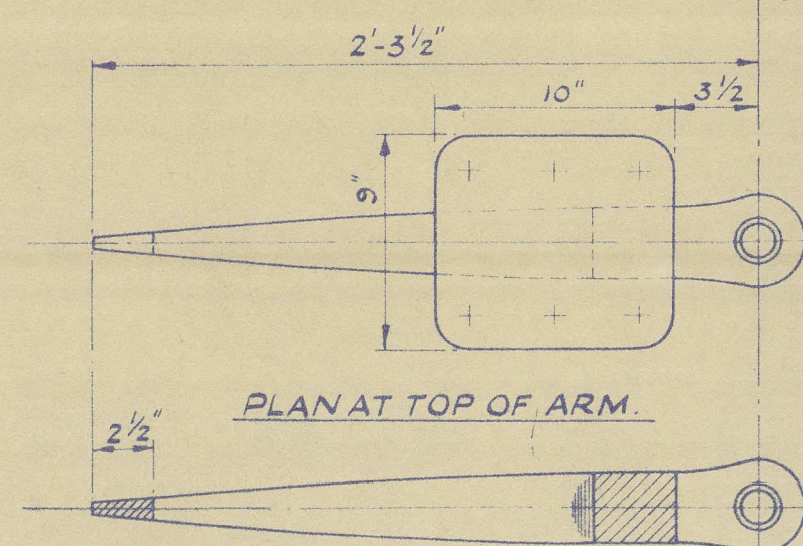
DETAIL OF AFTER EDGE  
SCALE:-  $\frac{1}{4}$  FULL SIZE.



SECTION THRO' RUDDER AT 'A'-'A'

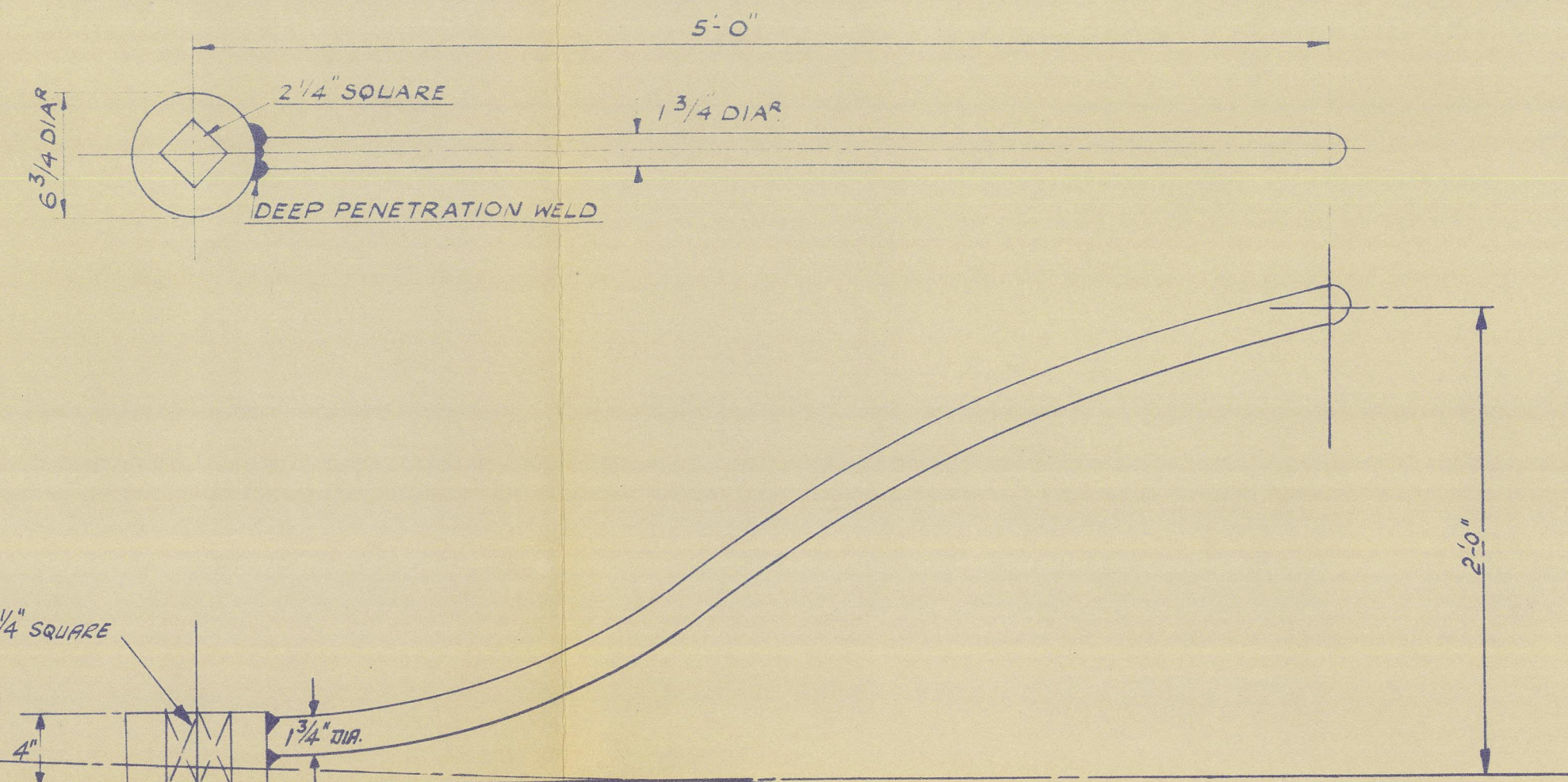


SECTION THRO' RUDDER AT 'B'-'B'



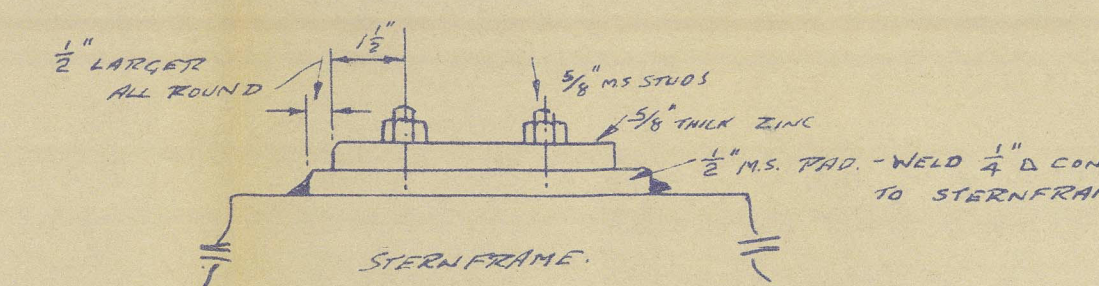
PLAN AT TOP OF ARM.

PLAN AT LOWER ARM.

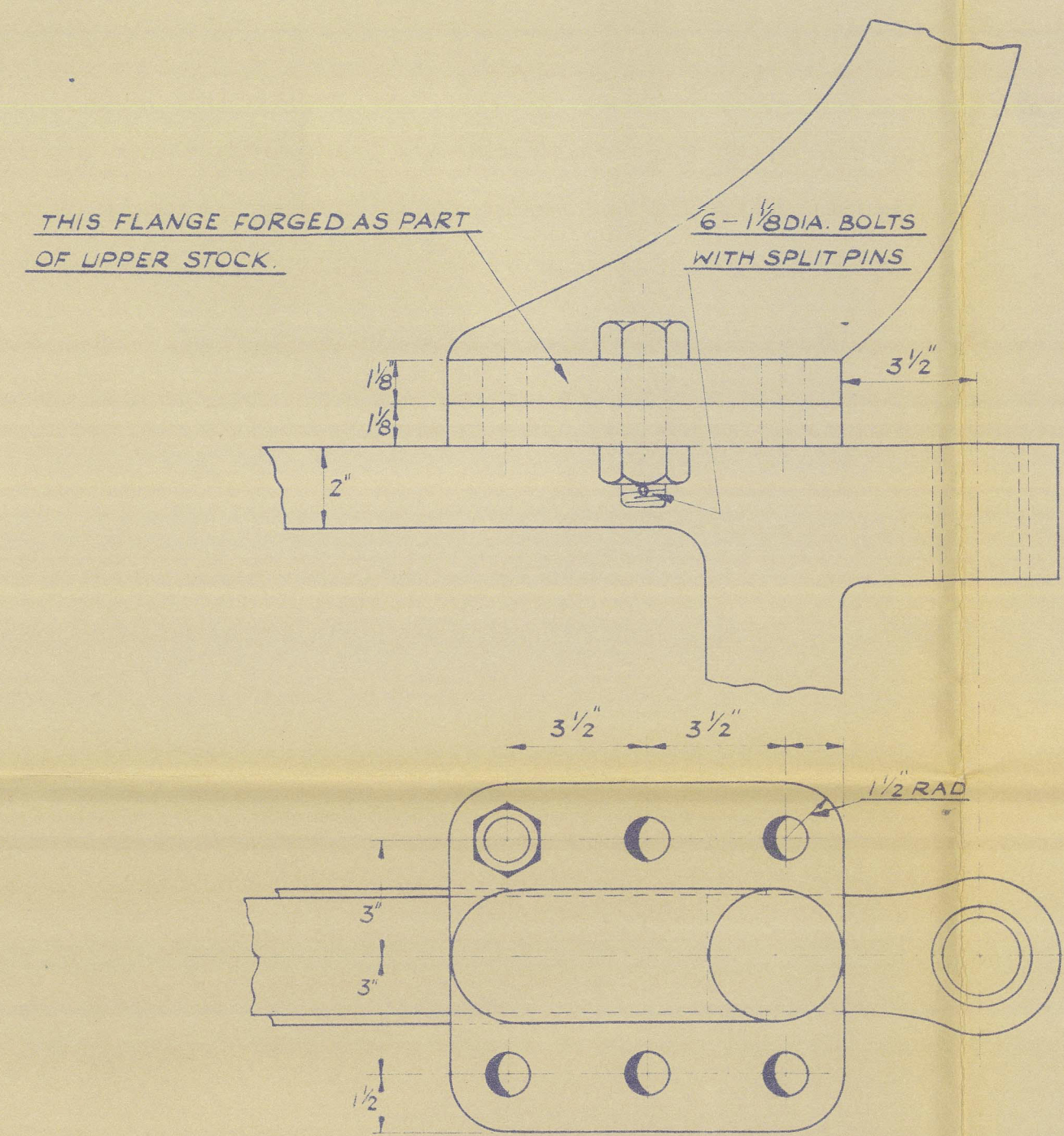


NOTE:- PORT SIDE RUDDER PLATING TO BE  
SLOT WELDED TO RUDDER FRAME  
2" X  $\frac{3}{4}$ " SLOTS SPACED 7" CENTRES  
STAR<sup>®</sup> SIDE RUDDER PLATING TO BE  
FILLET WELDED DIRECT TO RUDDER  
FRAME. WELDING TO BE  $\frac{1}{4}$ " FILLETS

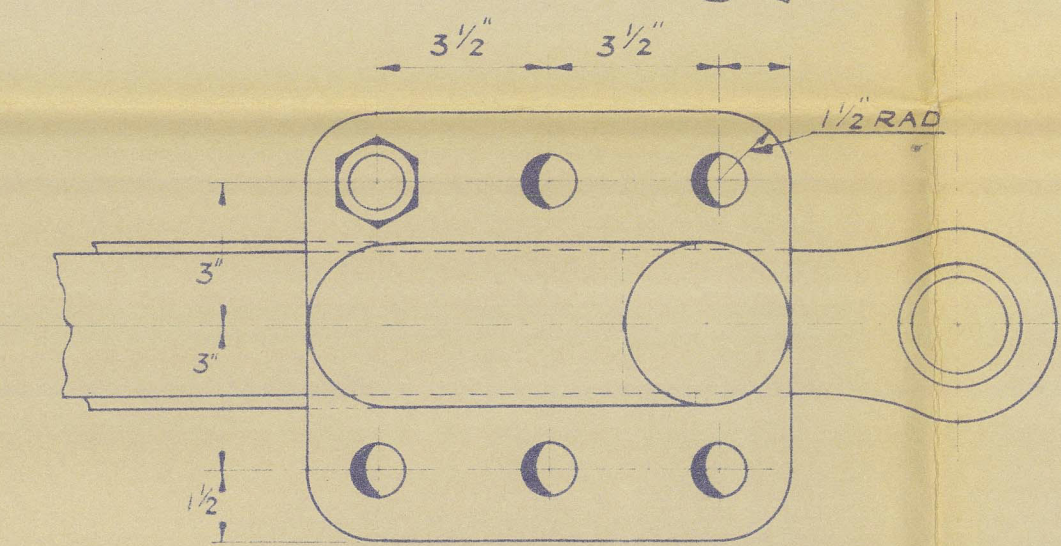
RUDDER & STERNFRAME  
SCALE 1 1/2" TO 1 FOOT.



DETAIL OF ZINC PAD FIXING.  
SCALE:  $\frac{1}{4}$ " TO 1 INCH.

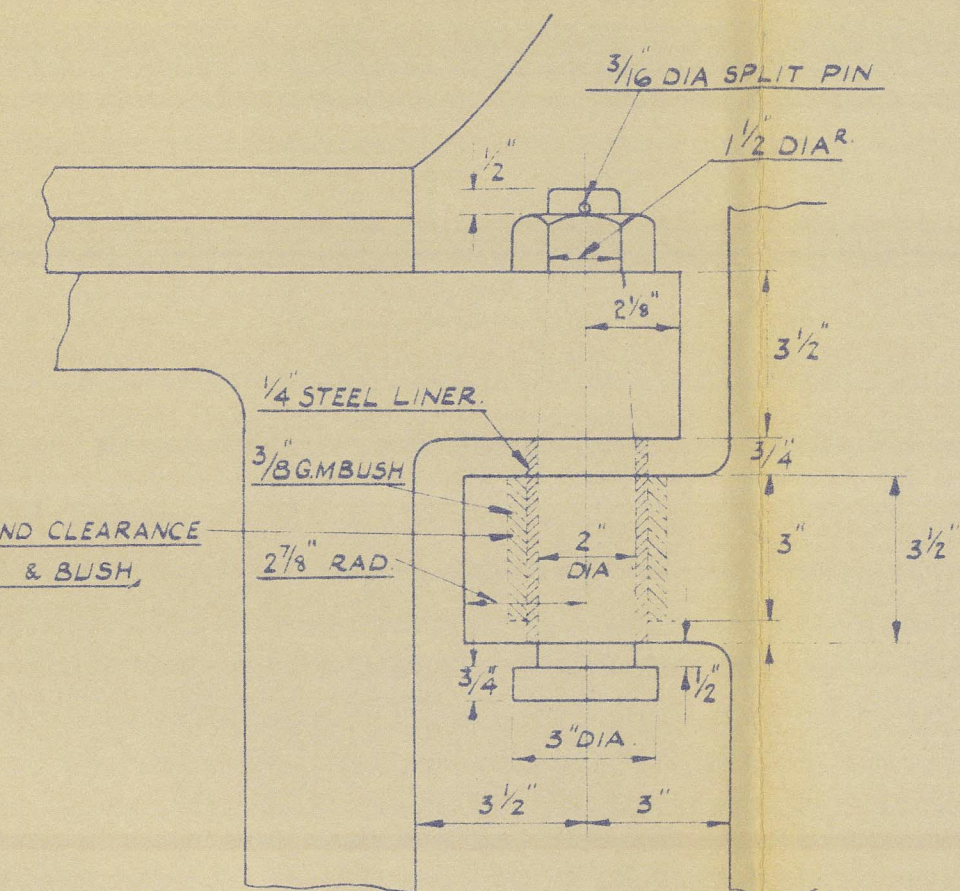


THIS FLANGE FORGED AS PART  
OF UPPER STOCK.



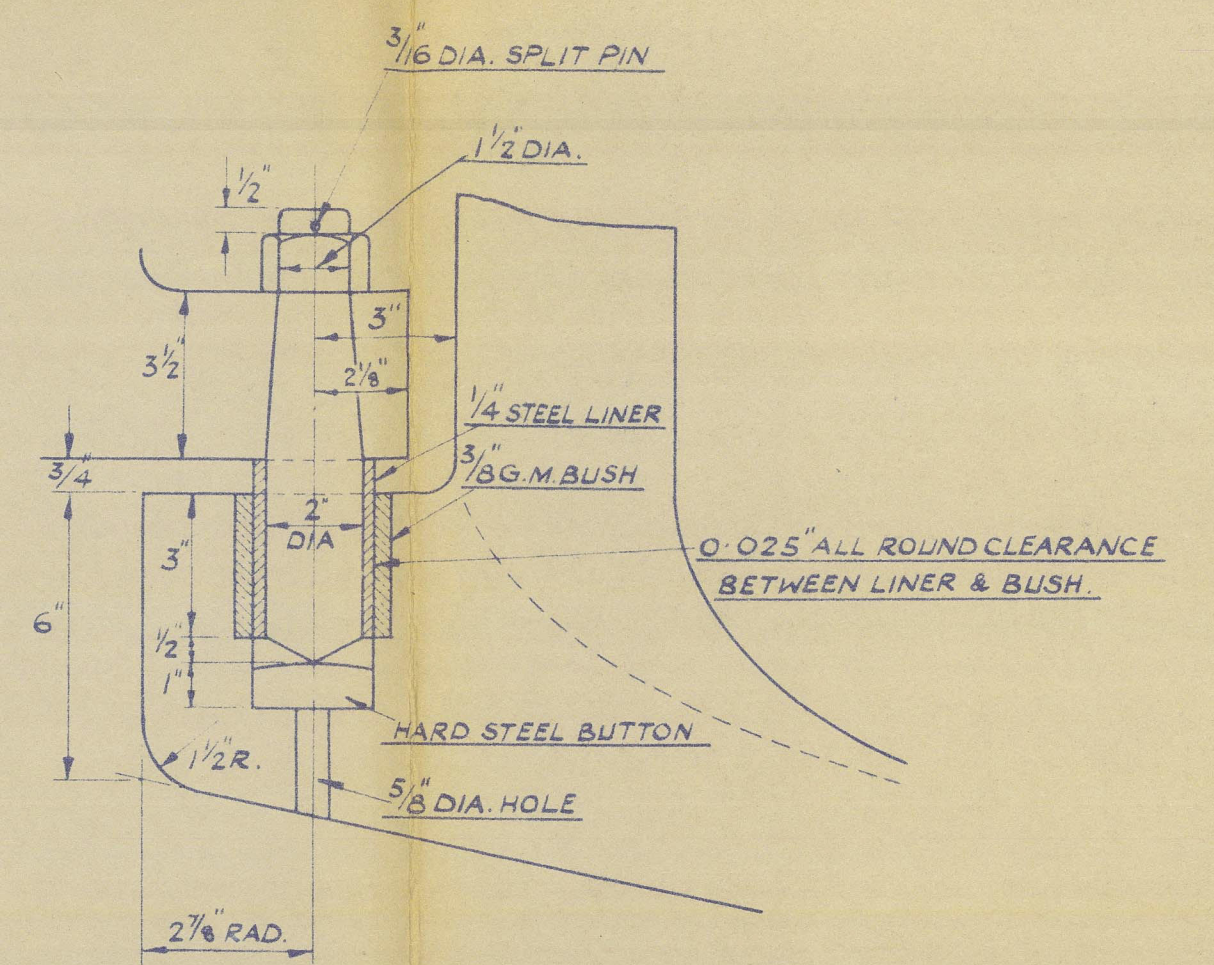
RUDDER COUPLING.

SCALE:-1/4 FULL SIZE



0.025 ALL ROUND CLEARANCE  
BETWEEN LINER & BUSH,

UPPER PINTLE.  
SCALE 1/4" FULL SIZE



DETAIL OF HEEL GUDGEON  
SCALE: 1/4 FULL SIZE

BROOKE MARINE LTD.  
SHIPBUILDERS & ENGINEERS  
LOWESTOFT ~ ENGLAND.

DRAWN - J. EVANS.	SCALES - AS SHOWN
SHIPS NOS. 269 - 270	PLAN NO. 3.

012711-012715-0246



LLA

BROOKE MARINE LTD - YARD NO 269

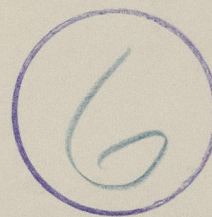
M.T. 'KANCHADEVA'

STERNFRAME & RUDDER - (AS FITTED)



IPSWICH RPT: NO 110122

RECORDS DEPT.,  
LONDON.



012711-012715-0246



© 2021

Lloyd's Register  
Foundation