

# STEEL SCREW DIESEL THAMES TUG

CLASSIFICATION:- LLOYDS + A1 *TUG. For River Thames service.*  
(TOWING SERVICES)

ON RIVER THAMES.

EQUIPMENT NUMERAL = L(B+D) = 66.5 (195+90) = 1938

## NUMERALS.

L	66.5' to aft side of midship post.
B	19'-6"
D	9'-0"
d	7'-5 1/2"

7.65' for scantlings.

## EQUIPMENT

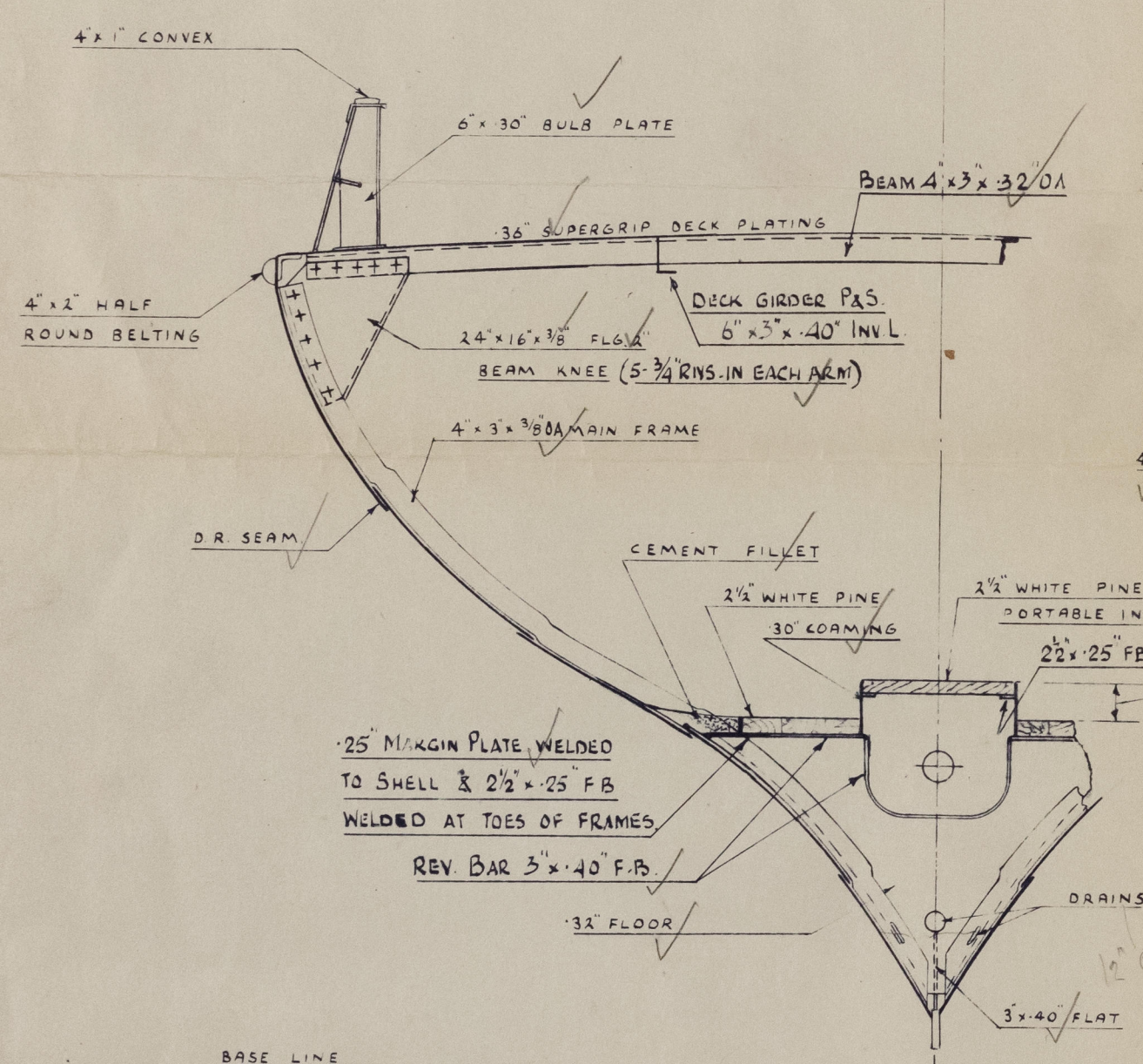
- 1 STOCKLESS BOWER ANCHOR 4 CWTs.
- 60 FATHOMS 3/4" STUD LINK CHAIN CABLE.
- 60 FATHOMS 5" MANILA HAWSER.
- 60 FATHOMS 2 1/2" MANILA WARP.

Equipment for A1 River Thames service may be:-

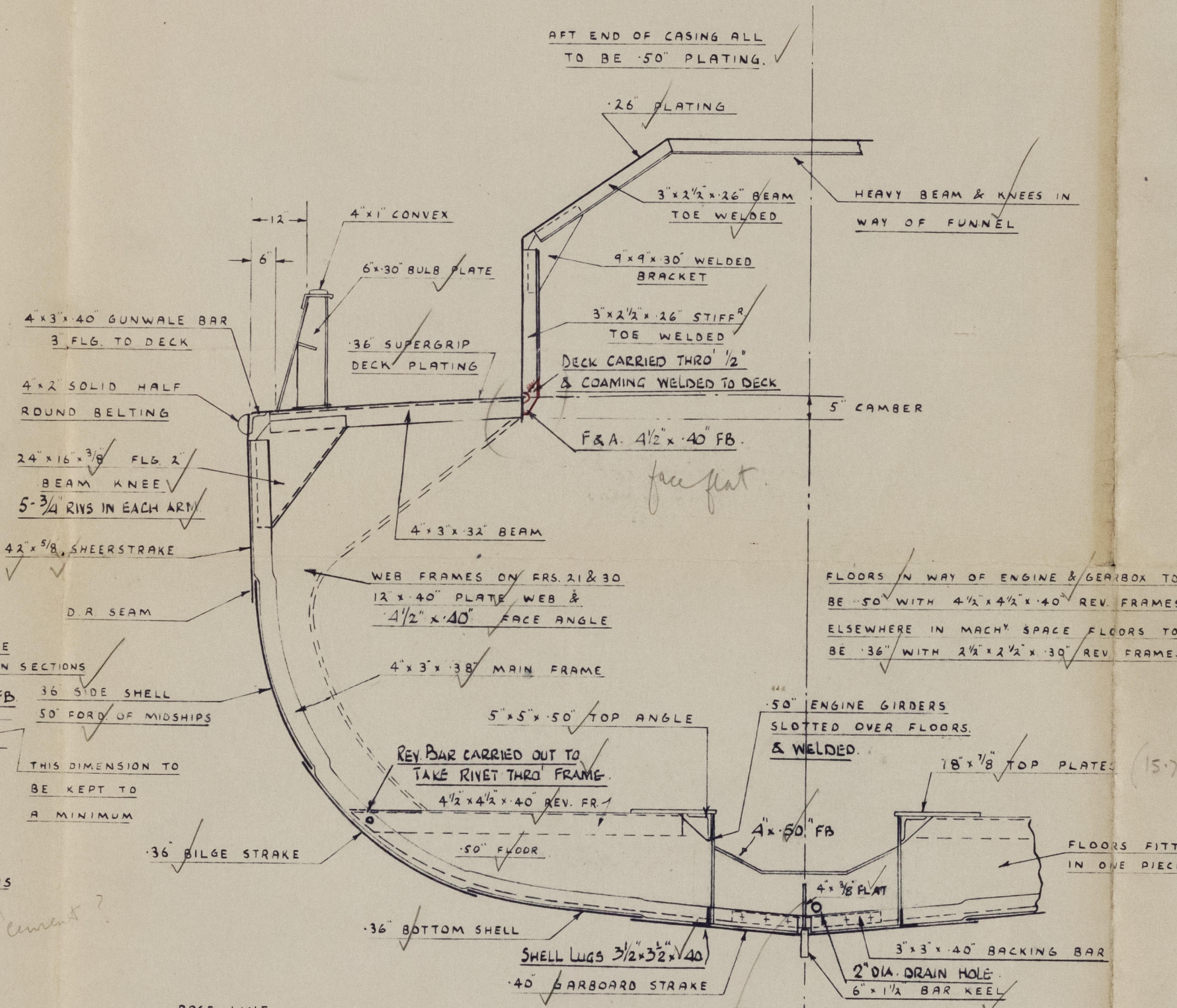
1 stockless bower anchor @ 1 1/2 cwt.

45 fathoms of 9/16" steel

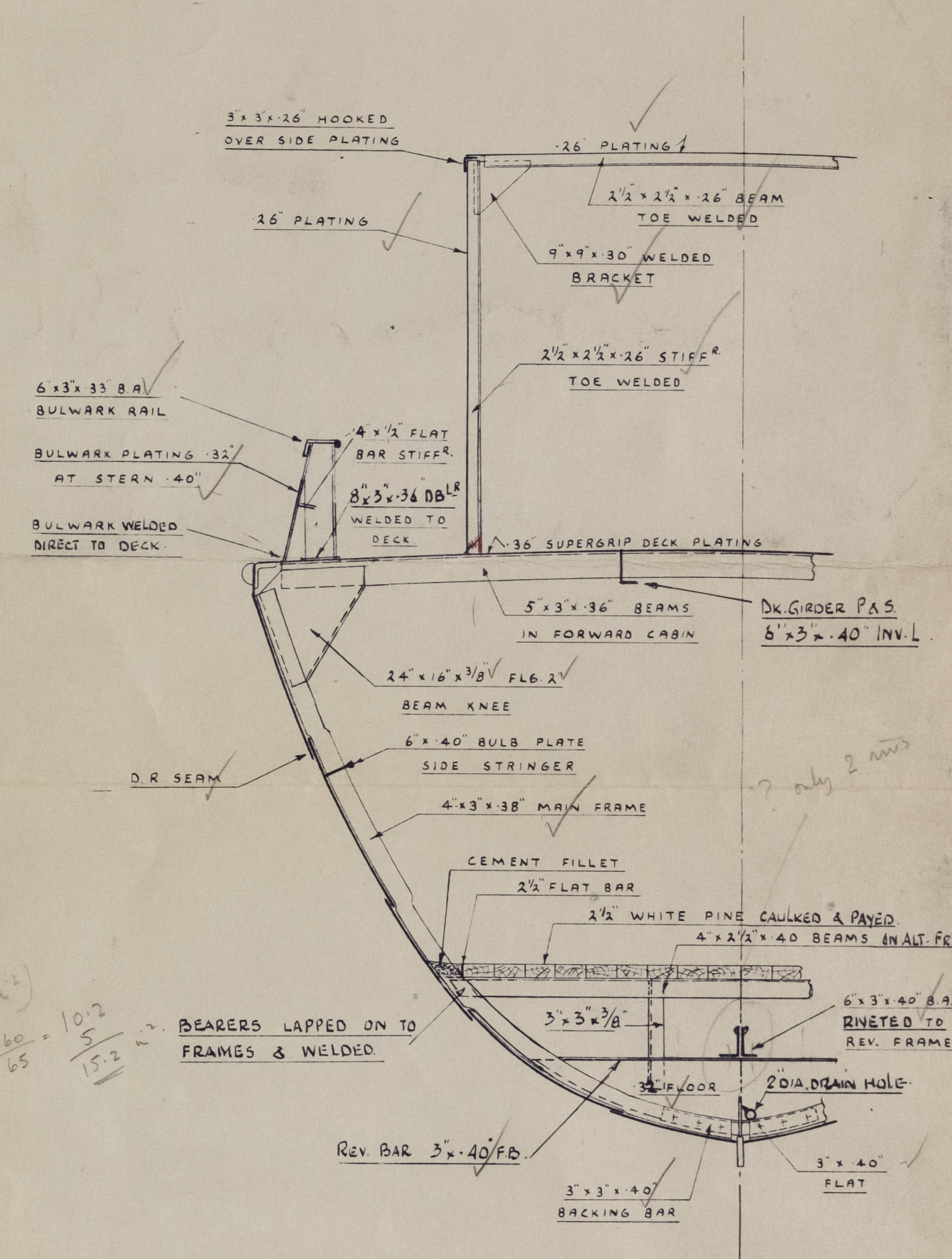
15 fathoms of 4 3/4" wire fibre hawser.



SECTION THRO ACCOMMODATION AFT.  
LOOKING AFT



MIDSHIP SECTION.



SECTION THRO ACCOMMODATION FWD.  
LOOKING FWD.

RICHARD DUNSTON LTD.  
SHIPBUILDERS  
THORNE YORKSHIRE

DRAWN BY R.B.H. DATE 5.1.61.  
TRACED BY DATE  
CHECKED BY DATE

REVISIONS	
No.	PARTICULARS
A.	15.2.61 AMENDED TO OWNERS APPROVED PRINT & SUBSEQUENT DETAILS ON PROFILE & DECK PLAN.

This Drawing and the Information it contains are the Property of RICHARD DUNSTON LTD. It is not to be Traced, Copied or Published without their Written Consent, nor is the Information thereon to be misused in any way.

TITLE:- MIDSHIP SECTION

SCALE:- 1/2" TO ONE FOOT

YARD No. T01068

DRG. No. 5743/1 A

012705-012710-0024



012705 - 012710 - 0024

RICHARD DUNSTON LTD  
YARD NO. T.1068.

MIDSHIP

SECTION



© 2021

Lloyd's Register  
Foundation