

LLOYD'S REGISTER OF SHIPPING

Index No. _____
(For London Office only.)

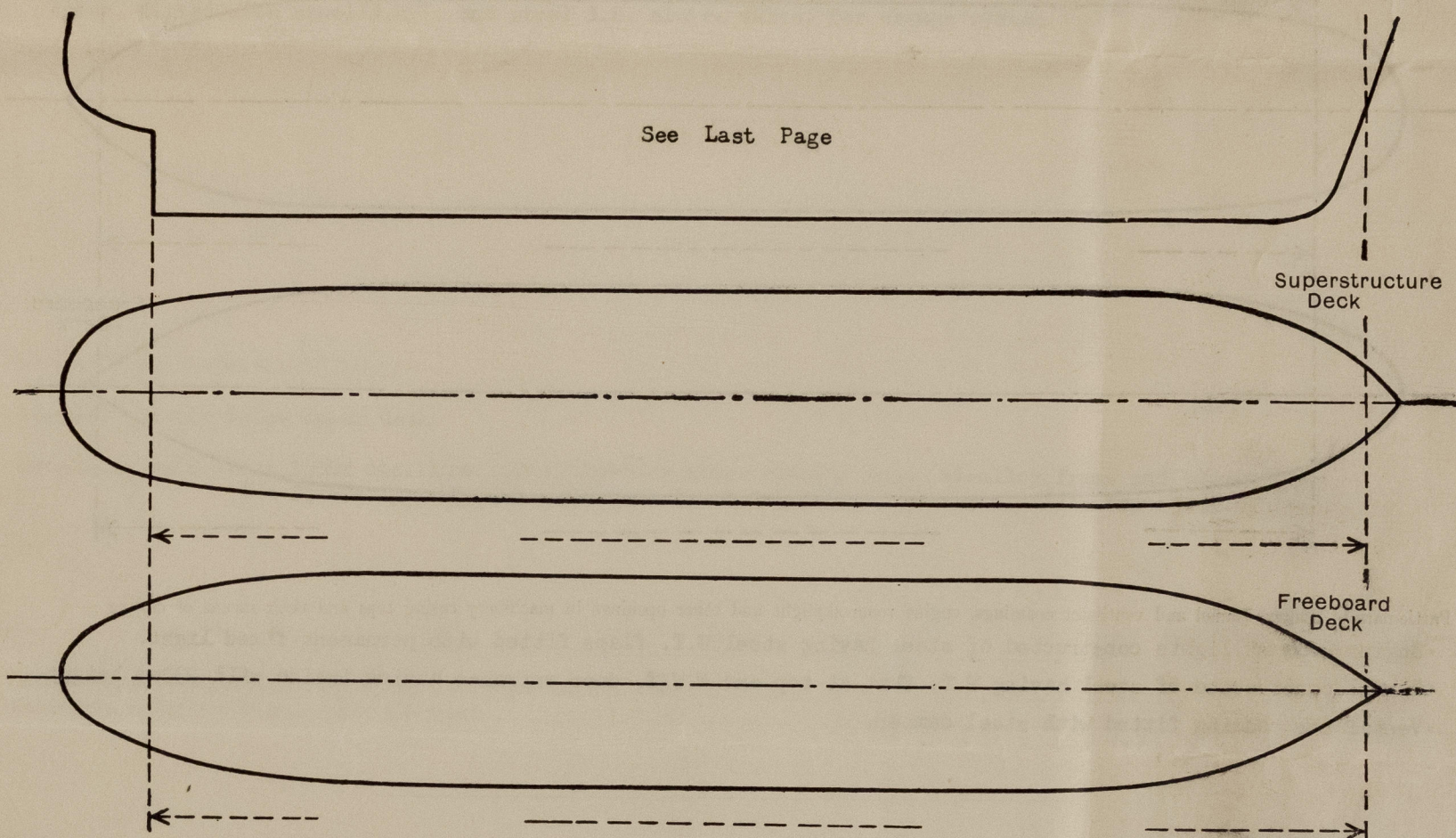
SURVEYS FOR FREEBOARD

(CONDITIONS OF ASSIGNMENT)

No. H-845

Ship's Name.....	" A M U R "	Port of Survey.....	HAKODATE
Official Number.....	-	Surveyor's Signature.....	<i>K. The Lab.</i>
Nationality and Port of Registry.....	NAKHODKA, U.S.S.R.	Date of Survey.....	MAY, 1965

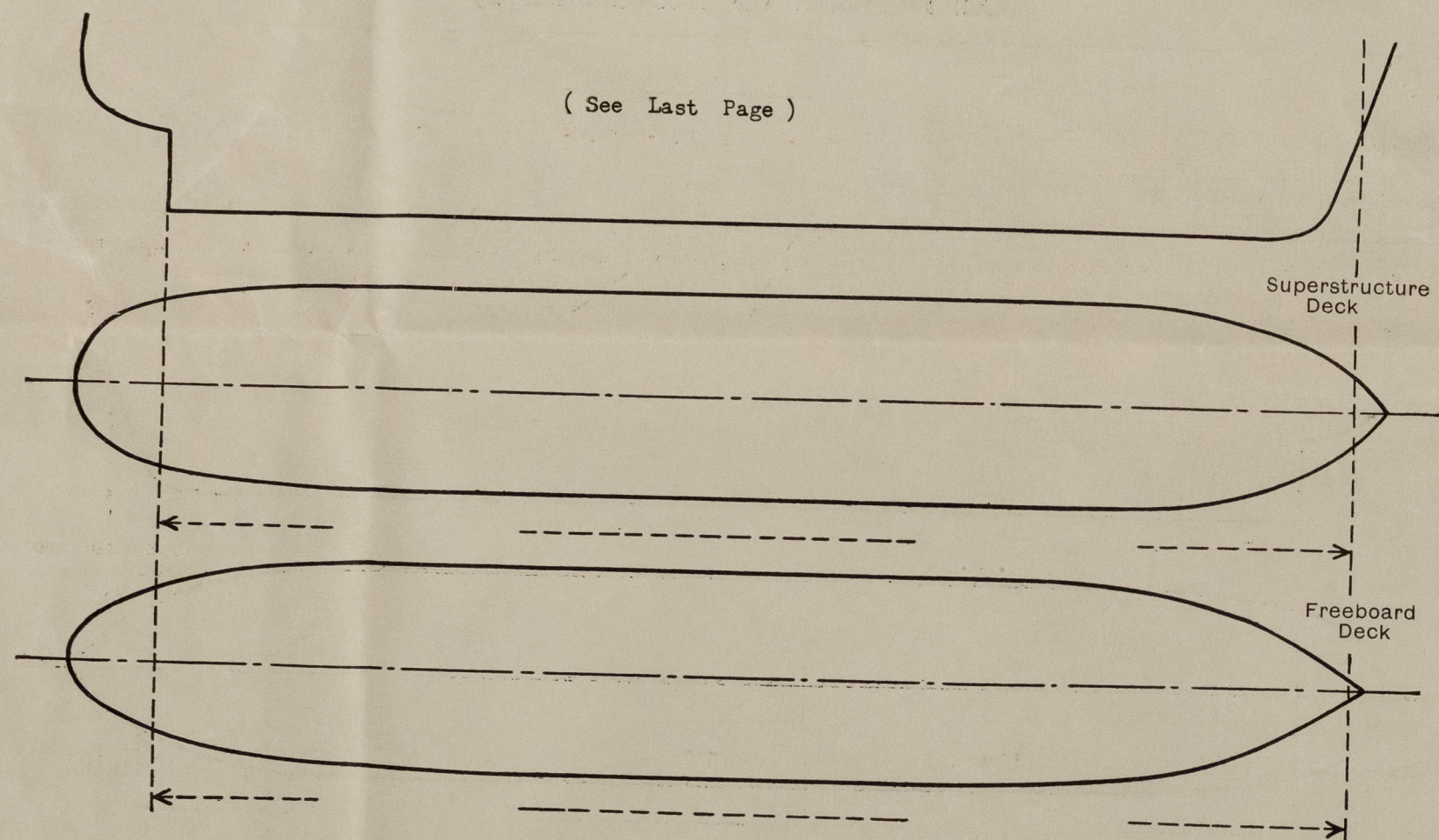
Disposition and dimensions of superstructures, trunks, deckhouses, machinery casings and wood sheathing to be inserted in the diagrams and tabular statement :—



Particulars of Superstructures, Trunks, Casings, Deckhouses. (m.m.)								
	Coaming	Plating	Stiffeners	Spacing max.	End Attachments of Stiffeners	Size of Openings	Height of Sills	Height, Beam to Beam
Exposed Bulkhead								
Raised Quarter Deck Bulkhead								
Bridge Aft Bulkhead								
Bridge Forward Bulkhead								
Forecastle Bulkhead								
Machinery Casings								
Machinery Casings								
Exposed Machinery Casings on Upper structure Deck								
Machinery Casings within Superstructure not fitted with Class I Closing Appliances	4.5	4.5	75 x 9 F.B.	625	Top Welded Bot Cont'd	1x1600x600	380	2400
Deckhouses and Exposed Machinery Casings	6	5.5	Front. 75 x 9 F.B. Sides 75 x 9 F.B. Aft 75x75x6 Inv. A	670 630 (T.B.) 680	Welded Bracketed Welded Welded	1x1600x600 4x1600x600	380 230	2400
Particulars of Closing Appliances (state if capable of being manipulated from both sides).								
Exposed Bulkhead								
Raised Quarter Deck Bulkhead								
Bridge Aft Bulkhead								
Bridge Forward Bulkhead								
Forecastle Bulkhead								
Exposed Machinery Casings on Upper structure Deck								
Machinery Casings within Superstructure not fitted with Class I Closing Appliances								
Deckhouses and Exposed Machinery Casings								
Hinged steel W.T. door operable from both side					Class I			
Hinged hard wood doors and Hinged steel N.W.T. doors, all operable from both sides.					Class II			

PARTICULARS OF PROTECTION TO OPENINGS, ETC.

The following diagrams should be used to indicate the positions of cargo and coaling hatchways, gangway, cargo and coaling ports, side scuttles, scuppers, ventilators, companionways, etc., which would affect the seaworthiness of the ship :-



Particulars of ~~scupper~~ funnel and ventilator coamings, engine room skylight and other openings in machinery casing tops and their means of closing :-

- Engine Room skylights constructed of steel having steel W.T. flaps fitted with permanent fixed light.
- Funnel constructed of steel having W.T. flat at top and N.W.T. door entrance having inside sill 230mm height.
- Ventilator coaming fitted with steel damper.

Particulars of Flush ~~Scuttles~~ Scuttles :-

2 x deck lights on upper deck in way of spud winch room - 100mm thick 93mm x 244mm glass in 16 x 25mm steel frame welded to deck.

Particulars of Companionways :-

(including those incorporated in deckhouses and masthouses)

Fore Spud Casing (Port and Starb'd sides) (A)

Strongly constructed of steel, 1400 x 600mm entrance opening fitted with hinged steel N.W.T. door operable from both sides, sill height 610mm.

Particulars of Ventilators in exposed positions on freeboard and superstructure decks :-

On Upper Deck: 9 x 125 mm Dia. G.N.V. 915 mm height, with hinged steel cover.

On Deckhouse Top: 2 x 150 mm Dia. M.V. 460 mm height. (screw-down type)
1 x 400 mm Dia. Cowl V. 460mm height, with wood plug & canvas cover.

10 mm thick coaming

Particulars of Air Pipes in exposed positions on freeboard, raised quarter, or superstructure decks :-

On Upper deck

1 x 10mm dia. 915mm height.
1 x 20mm dia. 915mm height.
2 x 50mm dia. 915mm height.
21 x 65mm dia. 915mm height.

On Deckhouse Top

3 x 50mm dia. 460mm height.

Closing device

• Oil Fuel Tank Air Pipe Steel flap having 9mm air hole and open/shut indicator, with steel perforated hood fitted with gauze wire.
• Other tank Hinged steel flap having 9mm air hole, secured by spring clip, (goose-neck type air pipes)

Particulars of Gangway Cargo and Coaling Ports :- Nil

Particulars of Scuppers and Sanitary Discharge Pipes :-

Accommodation spaces (Deckhouse and above)

- 2 x 70mm bore overboard discharges (port side) below 600mm from upper deck, all located in accessible space, fitted with steel N.R.V.
- 3 x 80mm bore overboard discharges (1 port side, 2 starb'd side) below 600mm from upper deck, all located in accessible space, fitted with steel N.R.V.
- 1 x 160mm bore overboard discharge (starb'd side) below 600mm from upper deck, located in accessible space, fitted with steel N.R.V. and steel S.D. sluice valve, for sewage system.

Particulars of Side Scuttles and Deadlights :-

No side scuttle below upper deck.

Deckhouse wall - 8 x 250mm dia. 10mm thick ordinary glass opening type, Al-alloy frame and no deadlight.
9 x Square type side windows with 5mm thick armoured glass, Al-alloy frame and no deadlight.

Vertical distance of Sill of lowest Side Scuttle above top of keel Nil
Distance from amidships to centre of lowest Side Scuttle -

Particulars of Guard Rails and Bulwarks :-

Open railing - Two tiers steel pipe work (25mm dia. pipe, 25mm dia. stanchion spaced max. 1500mm, 900mm height) around ship except in way of turning house forward.

Particulars of Gangways, Lifelines, etc. :- Nil

Particulars of Freeing Arrangements.

	Length of Bulwark	Height of Bulwark	Size of Freeing Ports	Number each side	Area each side	Rule area each side
After Well	-					
Forward Well	-					

State position of each freeing port { After Well :-
(F. and A. position and height above deck edge) { Forward Well :-

State whether the freeing ports are fitted with shutters, bars, or rails, and give particulars of such :-

Additional area where sheer is less than standard.

PARTICULARS OF PROTECTION TO OPENINGS, ETC.

		HATCHWAYS ON FREEBOARD AND SUPERSTRUCTURE DECKS. (m.m.)							
		Upper Deck							
Description of Hatchway		Entrance Hatch	Electric cable Hole	Wire Opening					
Dimensions of Hatchway		2000x1500	1000 Dia.	2 @ 700x900					
COAMINGS	Height above Deck	150	2050	90					
	Thickness	9	Strongly constructed of cast steel & steel plate.	9					
	Stiffeners	90x12							
	Brackets, Stays	F.B.		No cover fitted, and opened in control house.					
HATCH BEAMS	Number								
	Spacing								
FORE AND AFTERS	Number								
	Spacing								
	Unsupported Lengths								
	Scantling* and Sketch								
HATCH COVERS	Material	Steel (See Sketch below)							
	Thickness	6, stiffened 75x75x6 Inv.A.	Not fitted						
HATCH COVERS	How fitted	Bolted, with rubber joint.							
	Bearing Surface	90							
Spacing of Cleats		-	-	-					
Number of Tarpaulins		-	-	-					

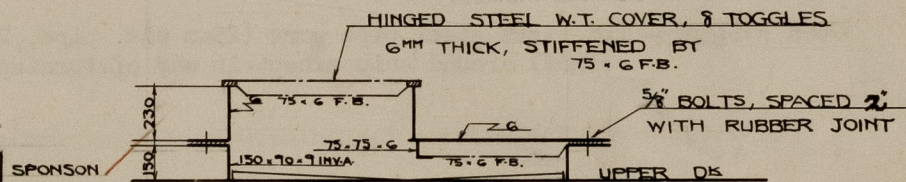
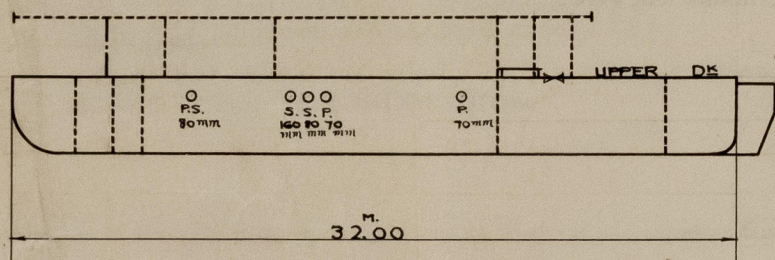
*Are wood fore and afters steel shod at all bearing surfaces?
 Are battens and wedges efficient and in good condition?
 Are tarpaulins in good condition and in accordance with rule requirements?
 Are lashings provided in accordance with rule requirements?
 Are wood covers fitted with galvanised end bands?

Particulars of any special features:— (Timber Deck-cargo Fittings, Skylights, Sewage Systems, Ash Ejectors, Rubbish Shoots, etc.)

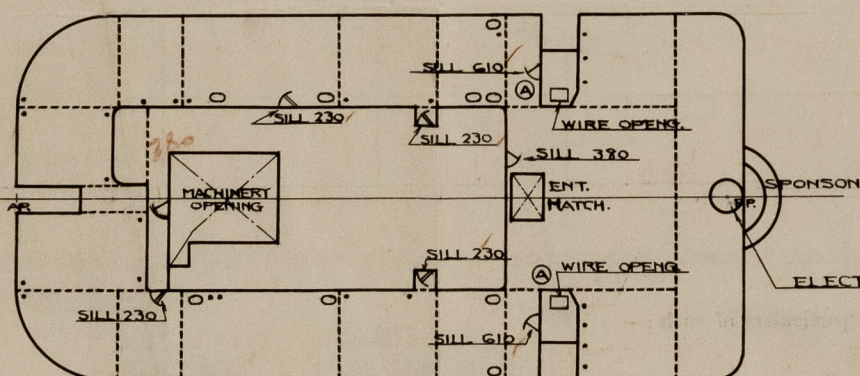
1 TYPE OF SHIP: NON-PROPELLED DREDGER (" RIVER & INLAND WATER SERVICE)

2 DISPOSITION OF DECKHOUSE COMPANION AND OF ITEMS AFFECTING SEAWORTHINESS.

3 ENTRANCE HATCHWAY



UPPER DECK



- AIR PIPE
- G. N. V.
- ▽ W. T. STEEL DOOR
- ▽ N. W. T. STEEL DOOR
- ▽ N. W. T. WOOD DOOR
- 80" OVERBOARD DISCHARGE & BORE DIA



© 2021

Lloyd's Register Foundation