

LLOYD'S REGISTER OF SHIPPING

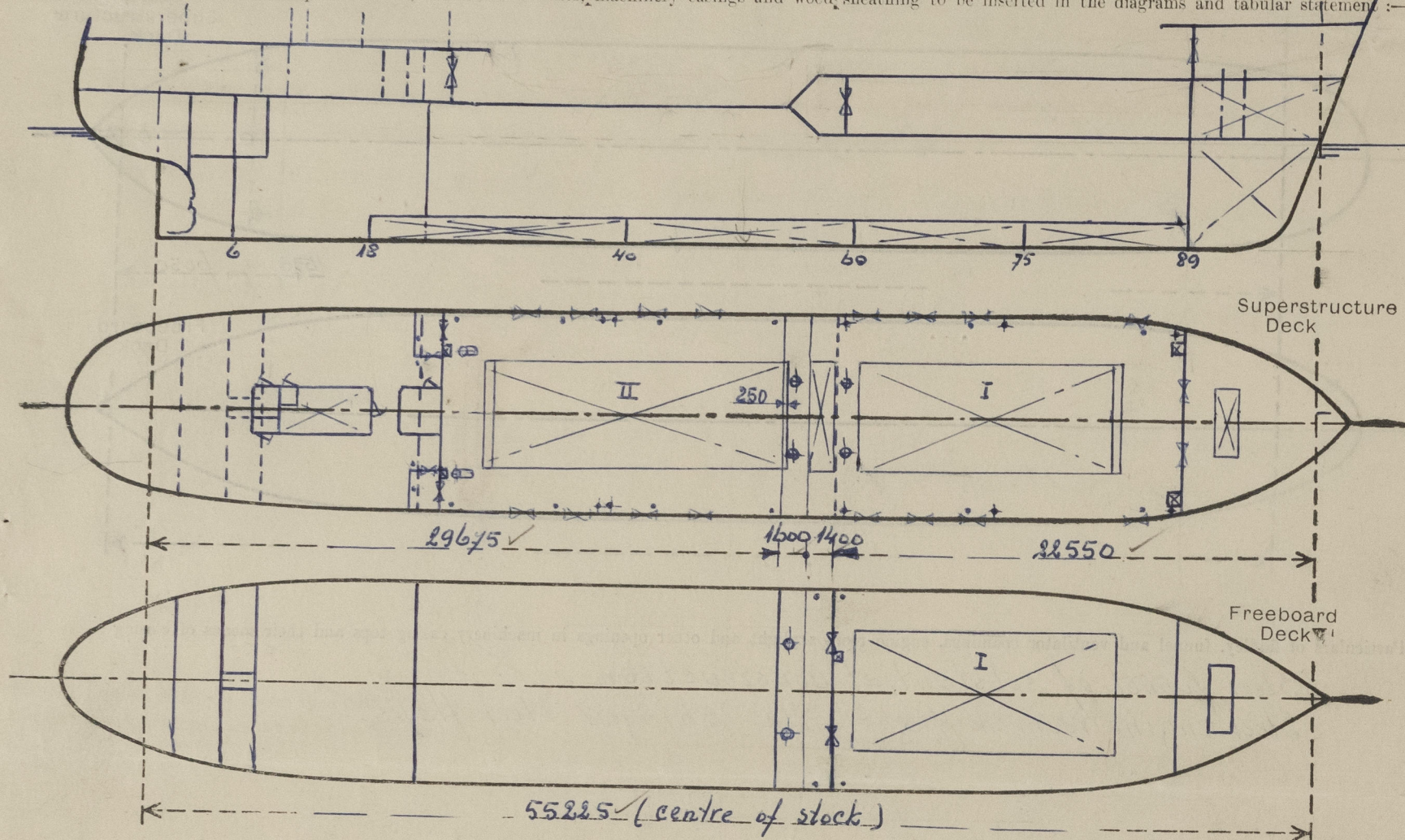
Index No.
(For London Office only.)

SURVEYS FOR FREEBOARD

(CONDITIONS OF ASSIGNMENT)

Ship's Name "SOLVANTI"Port of Survey Haren - GroningenOfficial Number —Surveyor's Signature W. J. JanssenNationality and Port of Registry Belgian : AntwerpDate of Survey white building

Disposition and dimensions of superstructures, trunks, deckhouses, machinery casings and wood sheathing to be inserted in the diagrams and tabular statement:—



AS PER APPROVED PLANS

Particulars of Superstructures, Trunks, Casings, Deckhouses.

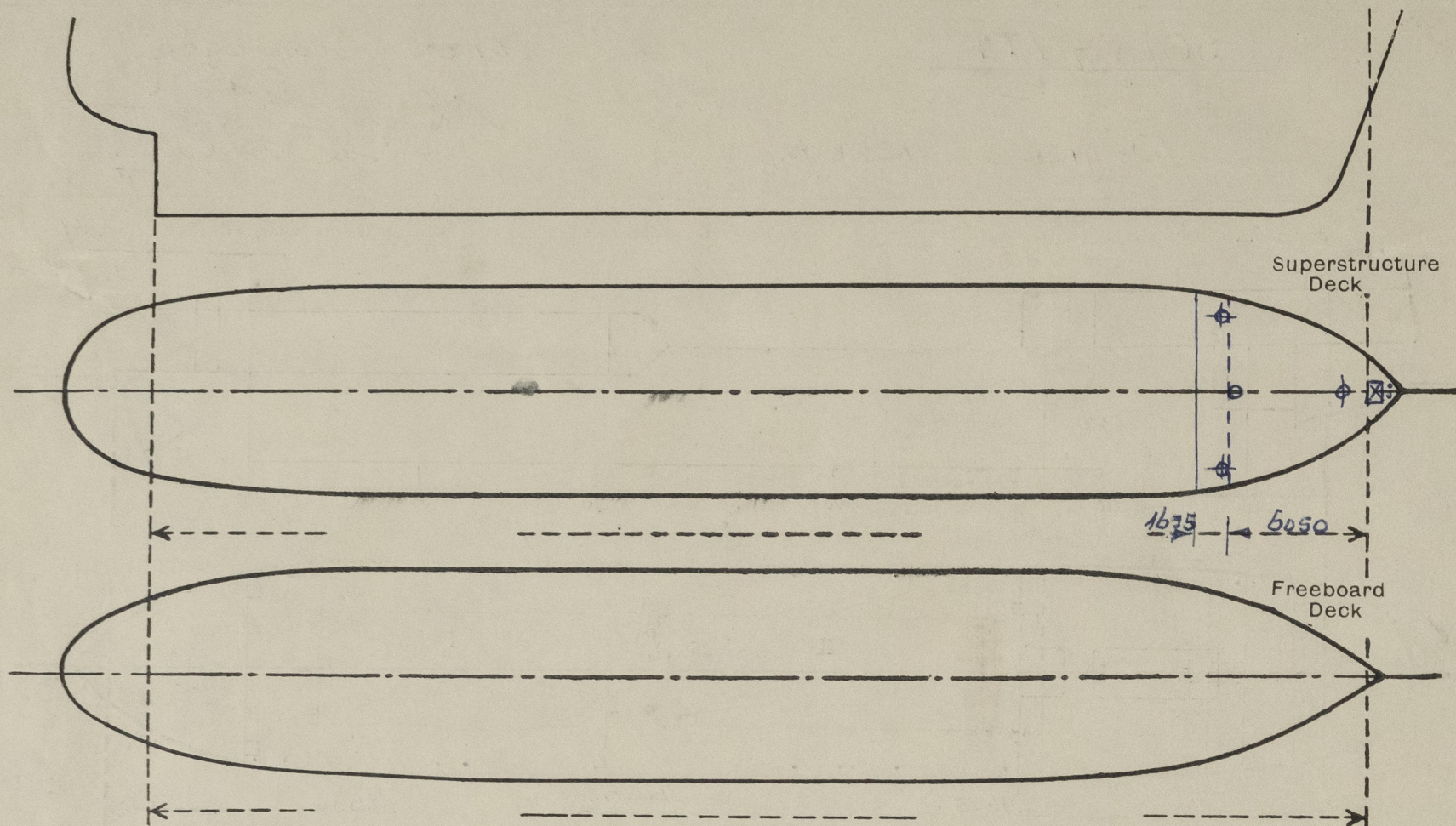
	Coaming	Plating	Stiffeners mm	Spacing mm	End Attachments of Stiffeners	Size of Openings mm	Height of Sills mm	Height, Beam to Beam mm
Superimposed Poop Bulkhead ...	75 ✓	—	1. 125 x 75 x 11 ✓	500 ✓	ew top & bottom	2x 1290 x 990	610 ✓	2100
Raised Quarter Deck Bulkhead ...	85 ✓	—	1. 190 x 95	690	ew	—	—	2120
Bridge, After Bulkhead ...	75 ✓	—	1. 90 x 10	655	ew	none	—	2120
Bridge, Forward Bulkhead ...	65 ✓	—	1. 75 x 65 x 85 ✓	700 ✓	ew	2x 1290 x 990	610 ✓	2120
Superimposed Forecastle Bulkhead ...	55 ✓	—	1. 75 x 10	760	ew top & bottom	2x 1290 x 990	530 ✓	2050
Trunk, Aft ...								
Trunk, Forward ...								
Exposed Machinery Casings on Free- board or Raised Quarter Decks ...								
Exposed Machinery Casings on Super- structure Decks ...								
Machinery Casings within Superstruc- tures not fitted with Class I Closing Appliances ...	5	—	1. 65 x 8	550	ew	1x 1580 x 585	310 ✓	2100
Deckhouses and Pump Room Entrances								

Particulars of Closing Appliances (state if capable of being manipulated from both sides).

Superimposed Poop Bulkhead ...	2 portable steel plates on hookbolts ✓
Raised Quarter Deck Bulkhead ...	} NO OPENING
Bridge, After Bulkhead ...	
FORECASTLE AFT Bridge, Forward Bulkhead ...	2 portable steel plates on hookbolts ✓
Superimposed Forecastle Bulkhead ...	2 portable steel plates on hookbolts ✓
Exposed Machinery Casings on Free- board or Raised Quarter Decks ...	
Exposed Machinery Casings on Super- structure Decks ...	
Machinery Casings within Superstruc- tures not fitted with Class I Closing Appliances ...	1 hinged steel door, operated from both sides ✓
Deckhouses and Pump Room Entrances	

PARTICULARS OF PROTECTION TO OPENINGS, ETC.

The following diagrams should be used to indicate the positions of cargo and coaling hatchways, gangway, cargo and coaling ports, side scuttles, scuppers, ventilators, companionways, etc., which would affect the seaworthiness of the ship :-



Particulars of fiddle, funnel and ventilator coamings, engine room skylight and other openings in machinery casing tops and their means of closing :-

Steel funnel of substantial construction. ✓
Steel engine room skylight with 2 hinged steel flaps. ✓

Particulars of Flush Bunker Scuttles :-

none fitted ✓

Particulars of Companionways :-

(including those incorporated in deckhouses and masthouses)

Access to accommodation in poop from deckhouse. Entrance to deckhouse by hardwood doors, operated from both sides, sills 500 mm. ✓
Entrance to ER in ps of deckhouse 1450 x 635, hinged steel door, operated from both sides, sill 400 mm. ✓

Particulars of Ventilators in exposed positions on freeboard and superstructure decks :-

Superimposed forecastle: 3 x $\phi 12$ ", height 1800 mm, supported; thickness 11 mm. ✓
1 x $\phi 12$ ", " 1630 mm, " " " 11 mm. ✓
Shelterdeck: 4 x $\phi 12$ ", " 2700 mm, " " " 11 mm. ✓
R.Q. deck: 2 x $\phi 12$ ", " 4000 mm, " " " 11 mm. ✓

All ventilators provided with wood plug and canvas. ✓

Particulars of Air Pipes in exposed positions on freeboard, raised quarter, or superstructure decks :-

Superimposed forecastle: 2 x Height 460 mm. ✓
Shelterdeck: 2 x " 920 mm. ✓
R.Q. deck: 4 x " 920 mm. ✓

All airpipes provided with canvas hose and snifting hole when on watertanks, with steel cover and gascap, when on oil tanks. ✓

Particulars of Gangway Cargo and Coaling Ports :-

none fitted

Particulars of Scuppers and Sanitary Discharge Pipes :-

Superimposed forecastle drains through on each side 1- $\phi 2$ " opening in bulkhead; closed by plug with chain attachment. ✓
Tween deck drained by on each side 1 scupper pipe to hold bilge with screw down valve, operated from shelterdeck; $\phi 2\frac{1}{2}$ " open/shut indicator provided. ✓
Tonnage well drained by on each side 1 scupper pipe to hold bilge with screw down valve, operated from shelterdeck; $\phi 3$ " open/shut indicator provided. ✓
Poop space drained by on each side 1-2 $\frac{1}{2}$ " and 1-2" scupper pipe led to ER bilge, all provided with self closing cock. ✓
Sanitary discharges only from spaces above RQ deck led to overboard in ER by on sb 2 x $\phi 4$ " non return valves, on ps 1 x $\phi 4$ ", on sb & ps 1 x $\phi 2\frac{1}{2}$ " all these non return valves are of screw down type. ✓
On each side of shelterdeck 3 scupper pipes $\phi 2\frac{1}{2}$ ", on each side of RQ deck 4 scupper pipes $\phi 2\frac{1}{2}$ "; all to overboard. ✓

Particulars of Side Scuttles and Deadlights :-

In poopsides: $\phi 12$ " of substantial construction and provided with strong hinged deadlights. ✓

Vertical distance of Sill of lowest Side Scuttle above top of keel all above freeboard deck. ✓
Distance from amidships to centre of lowest Side Scuttle

Particulars of Guard Rails and Bulwarks :-

Superimposed forecastle: steel bulwark 1500 - 150 height with guardrail 1230 - 1030 height; 3 rods. ✓
Shelterdeck: } Strong steel bulwark, efficiently supported; height { 1050 mm
R.Q. deck: } 1100 mm
Poop: steel bulwark 1050 mm

Particulars of Gangways, Lifelines, etc. :-

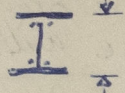
Lifelines can be rigged over RQ hatchway. ✓

Particulars of Freeing Arrangements.

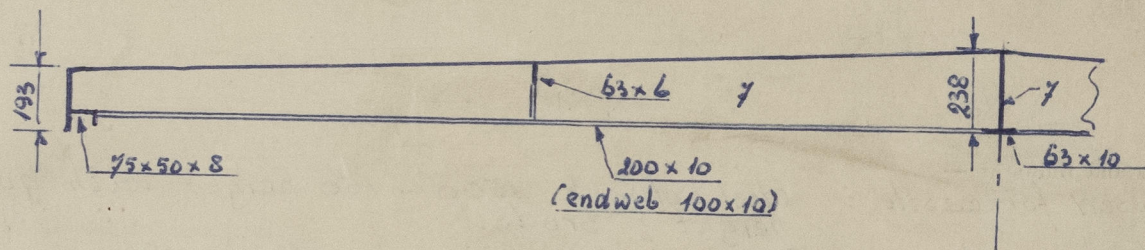
	Length of Bulwark mm	Height of Bulwark mm	Size of Freeing Ports mm	Number each side	Area each side	Rule area each side
Poop deck	15.64 ✓	1050 ✓	1500 x 160	3	.72 m ² ✓	.54 m ² ✓
After Well ...	17.30 ✓ 14.10	1100 ✓	1600 x 150	4	.96 m ² ✓	1.04 m ² (1.034)
Forward Well ...	17.90 ✓	1050 ✓	600 x 300 1600 x 150	1 3	.90 m ² ✓	0.58 m ²

State position of each freeing port ... After Well :- 180'
(F. and A. position and height above deck edge) Forward Well :- 270'
; sill 600 x 300 type = 100 mm.
State whether the freeing ports are fitted with shutters, bars, or rails, and give particulars of such :- only 600 x 300 type with balanced shutter, opening protected by shaft.
Additional area where sheer is less than standard.

PARTICULARS OF PROTECTION TO OPENINGS, ETC.

HATCHWAYS ON FREEBOARD AND SUPERSTRUCTURE DECKS.									
Description of Hatchway			I	II	I	tonn. hatch	α		
Dimensions of Hatchway			Freeb. deck 12.10 x 5.50	RQ deck 13.20 x 5.00	1/2 Shelterdeck 12.10 x 5.00	1.40 x 5.00	superimp. plate φ 830		
COAMINGS	Height above Deck	...	230	885	885	310	775		
	Thickness	{ Sides ...	10	11	11	11	8		
	Stiffeners	{ Ends ...	—	255 x 120 x 12	255 x 120 x 12	—	—		
	Brackets, Stays	{ Sides ...	—	6 webs	7 webs	—	—		
HATCH BEAMS	Number	...	4	8	8	—	—		
	Spacing	...	equal	as per app. plan	as per app. plan	—	—		
	Scantling and Sketch	...		MacGregor type	MacGregor type	—	—		
	Bearing Surface	...	90	—	—	—	—		
FORE AND AFTERS	Number	...	—	—	—	—	—		
	Spacing	...	—	—	—	—	—		
	Unsupported Lengths	...	—	—	—	—	—		
	Scantling* and Sketch	...	—	—	—	—	—		
HATCH COVERS	Material	...	fir	steel	steel	fir	steel		
	Thickness	...	62	75	75	60	75		
	How fitted	...	long	—	—	long	hinged		
	Bearing Surface	...	90	—	—	75	—		
Spacing of Cleats			550-600 mm	820/900	820/900	—	6 dogs		
Number of Tarpaulins			two	w.t.	w.t.	—	w.t.		
<p>*Are wood fore and afters steel shod at all bearing surfaces?</p> <p>Are battens and wedges efficient and in good condition?</p> <p>Are tarpaulins in good condition and in accordance with rule requirements?</p> <p>Are lashings provided in accordance with rule requirements?</p> <p>Are wood covers fitted with galvanised end bands?</p>									

Particulars of any special features:— (Timber Deck-cargo Fittings, Skylights, Sewage Systems, Ash Ejectors, Rubbish Shoots, etc.)



* Tarpaulins secured by steel band around tonnage hatch. Bands provided P. & S. with a hook for connection of steel wires with stretching screw athwartships.