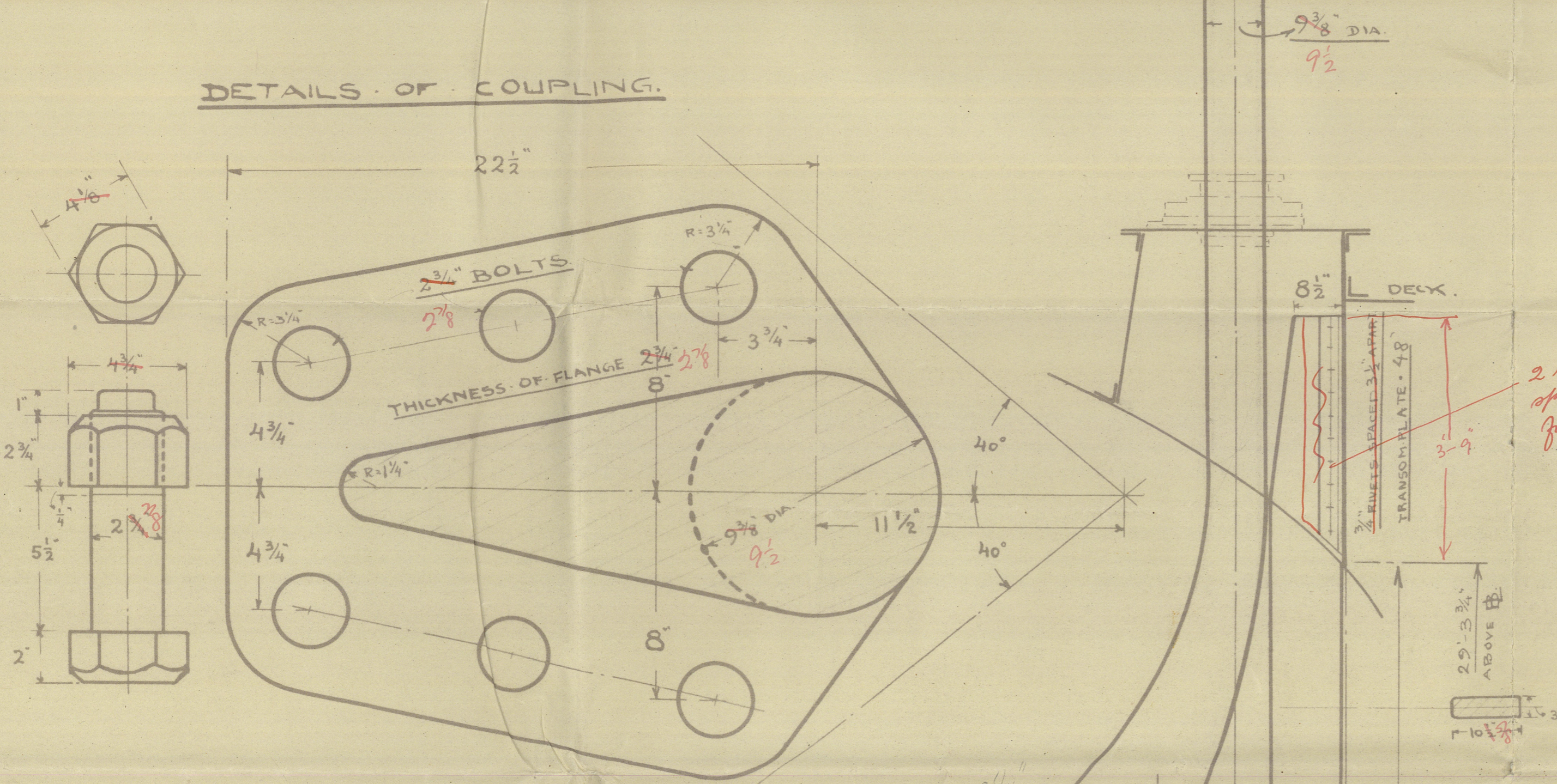


YARD No 543 STERNPOST & RUDDER. SCALE $\frac{3}{4}"$ & $3' = 1$ FOOT.

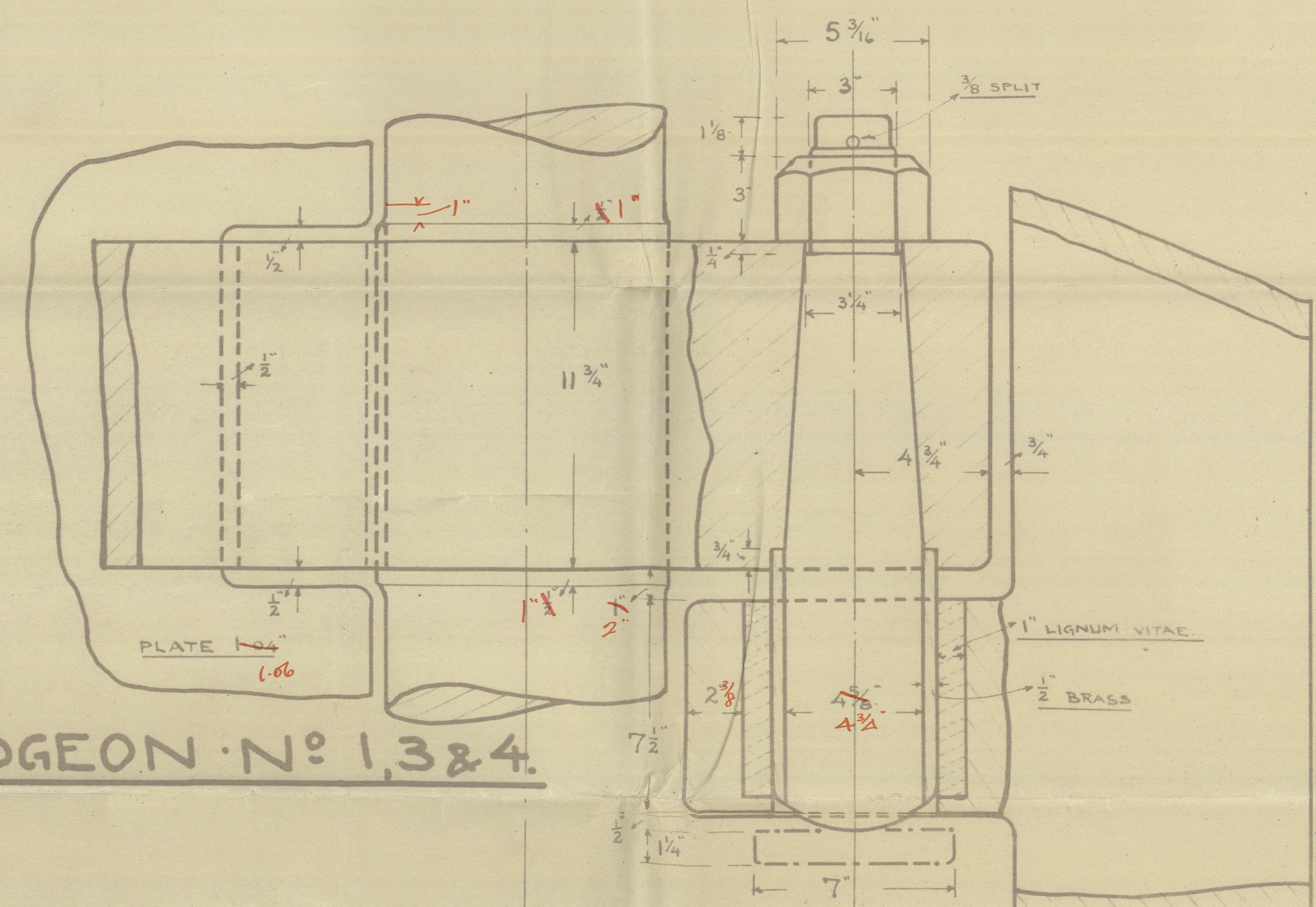
3/5/17.

RUDDERPOST OF CAST STEEL.
RUDDERSTOCK OF FORGED STEEL WITH FORGED
STEEL ARMS SHRUNK ON AND KEYED TO RUD-
DERSTOCK.
STEEL PINTLES WITH BRASS BUSHES FITTED
COMPLETE AS SHOWN IN SKETCHES.
RIVETHOLES TO BE CAREFULLY MARKED OFF
AND DRILLED ACCORDING TO THIS PLAN.

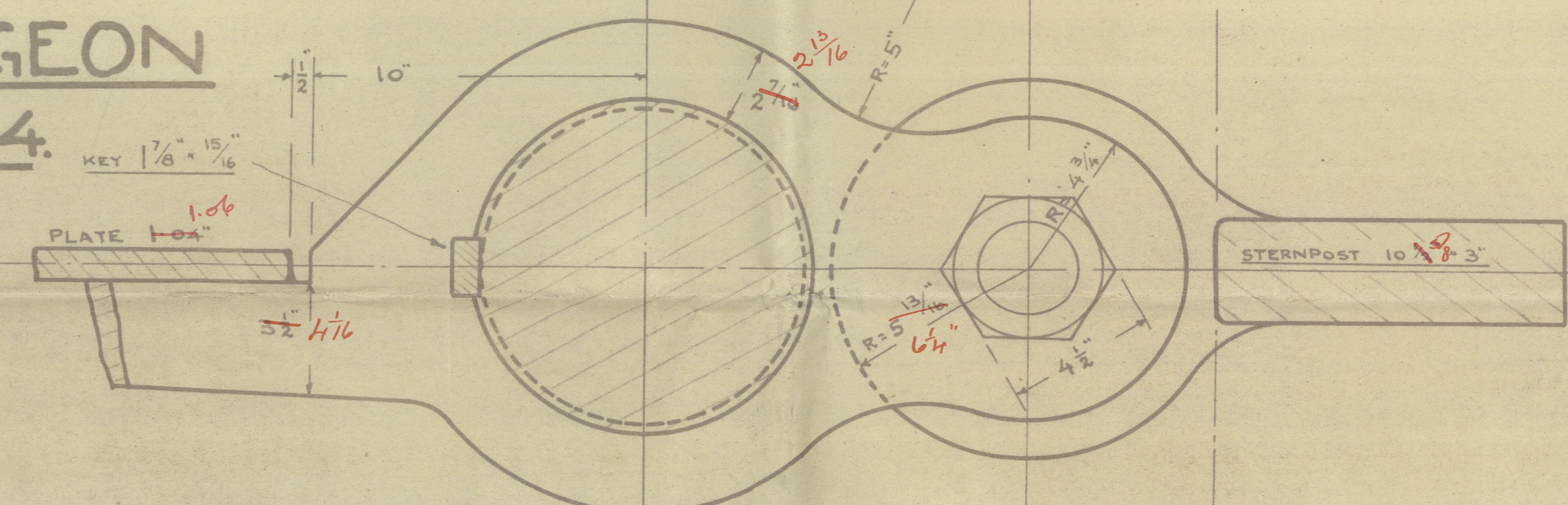
DETAILS OF COUPLING.



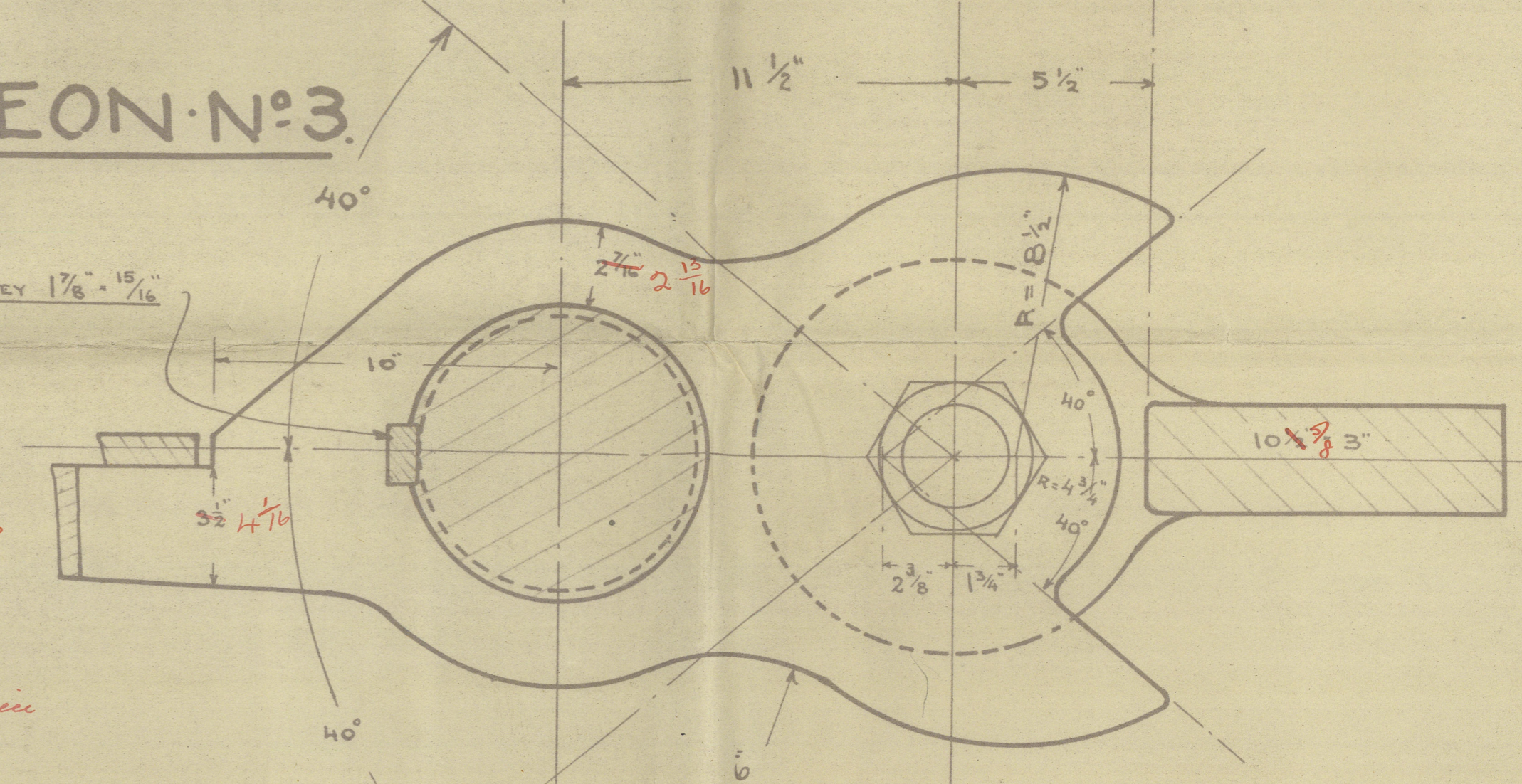
GUIDGEON No 1, 3 & 4.



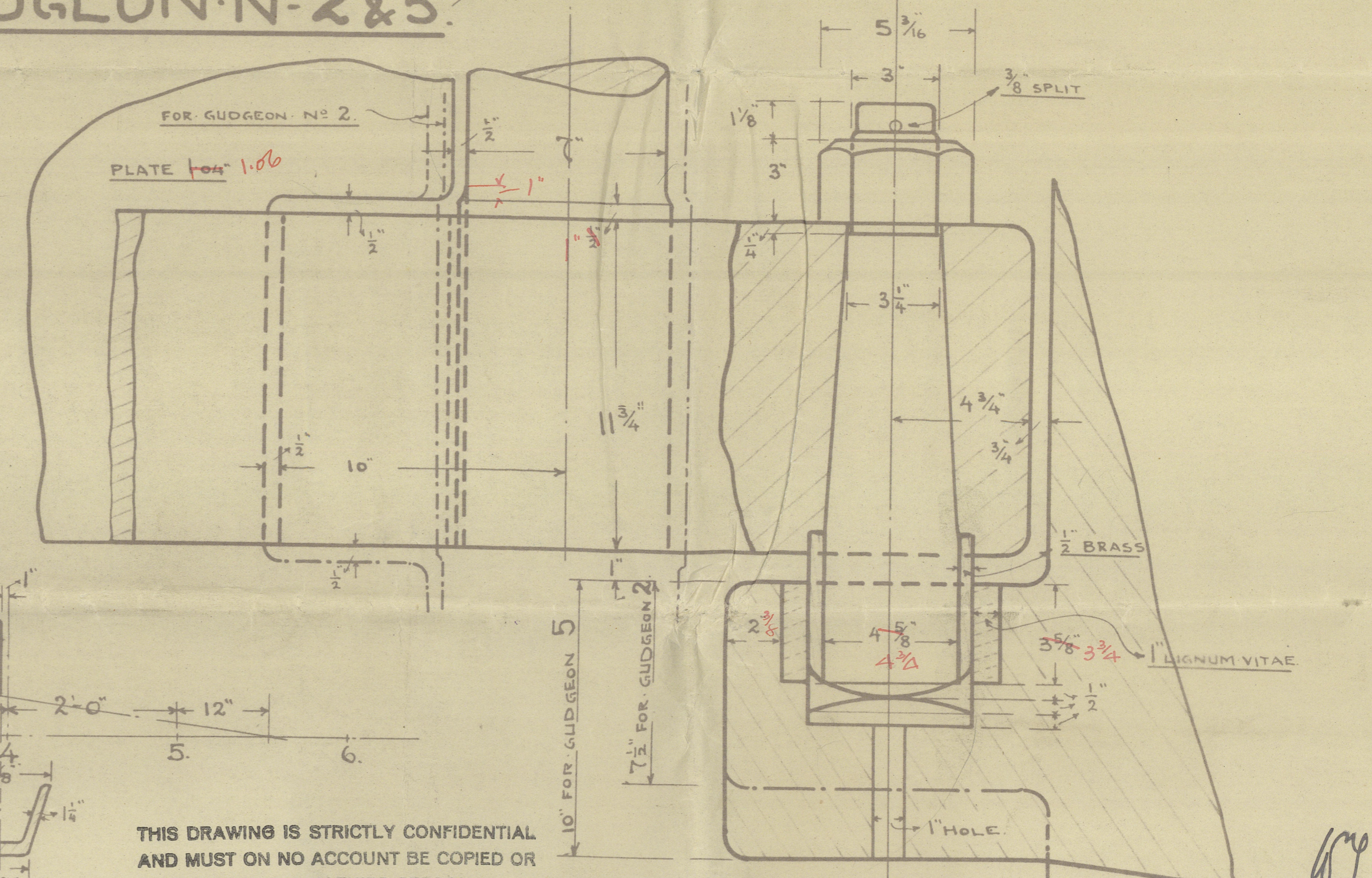
GUIDGEON No 1 & 4.



GUIDGEON No 3.



GUIDGEON No 2 & 5.



SPEED OF VESSEL: $11\frac{1}{2}$ KNOTS.
RUDDER AREA: 122.98 SQ. FT.
CTR. OF GRAVITY 3.24 FT. ABAFT E. OF PINTLES.

THIS DRAWING IS STRICTLY CONFIDENTIAL
AND MUST ON NO ACCOUNT BE COPIED OR
DISCLOSED FOR ANY THIRD PERSON.
COPENHAGEN, DATE: 24/4-27

AKTIESELSKABET
BURMEISTER & WAINSKIN-OG SKIBSBYGGERI.
B. Burmeister

3. 5. 27

© 2021 Register
Foundation

012678-012685-0001

Buenos Aires 7.

Burneister & Wain's
Copenhagen.

Yard No. 543.

Plan of
Stempost and Rudder.

^{N/w 'marita Norden}
{ M/S. "SUD ATLANTICO"
{ Cm. Rep. 7690, $\frac{29}{4}$ 28.



Approved plan.
~~Duplicate~~

SISTER VESSELS:

{ Burn. & Wain, Copenhagen
No 547, M/S. "SUD PACIFICO"
{ Copenhagen Rep. 7769, $\frac{16}{7}$ 28.

{ Burn. & Wain, Copenhagen
No 550, M/S. "SUD AFRICANO"
{ Cm. Rep. No: 7833.

012678-012685-0001