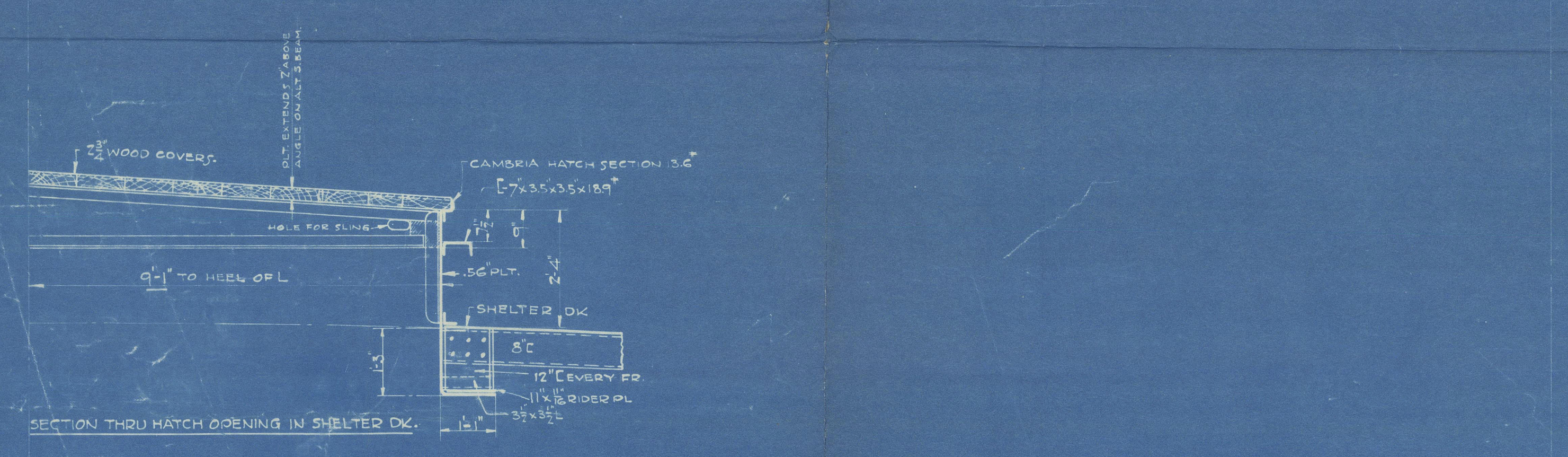
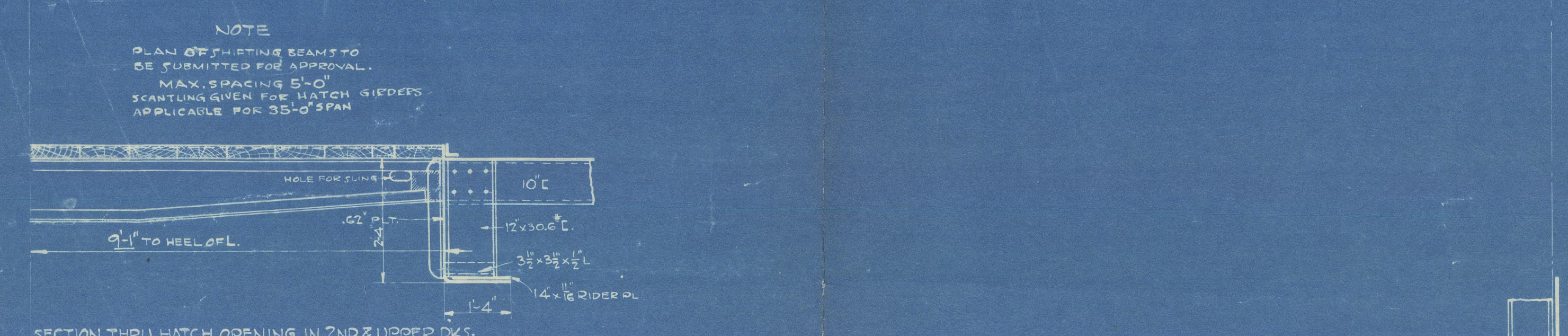


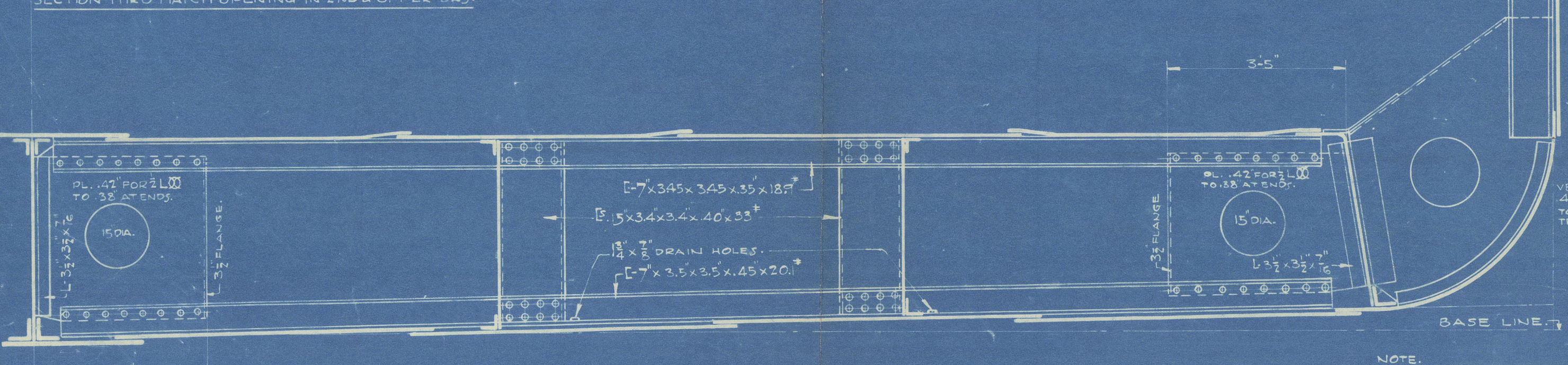
SECTION THRU MOTOR ROOM HATCH.



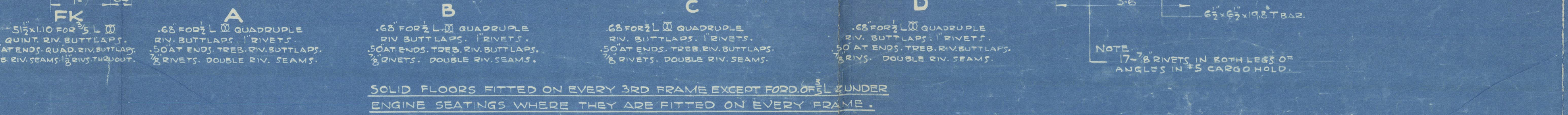
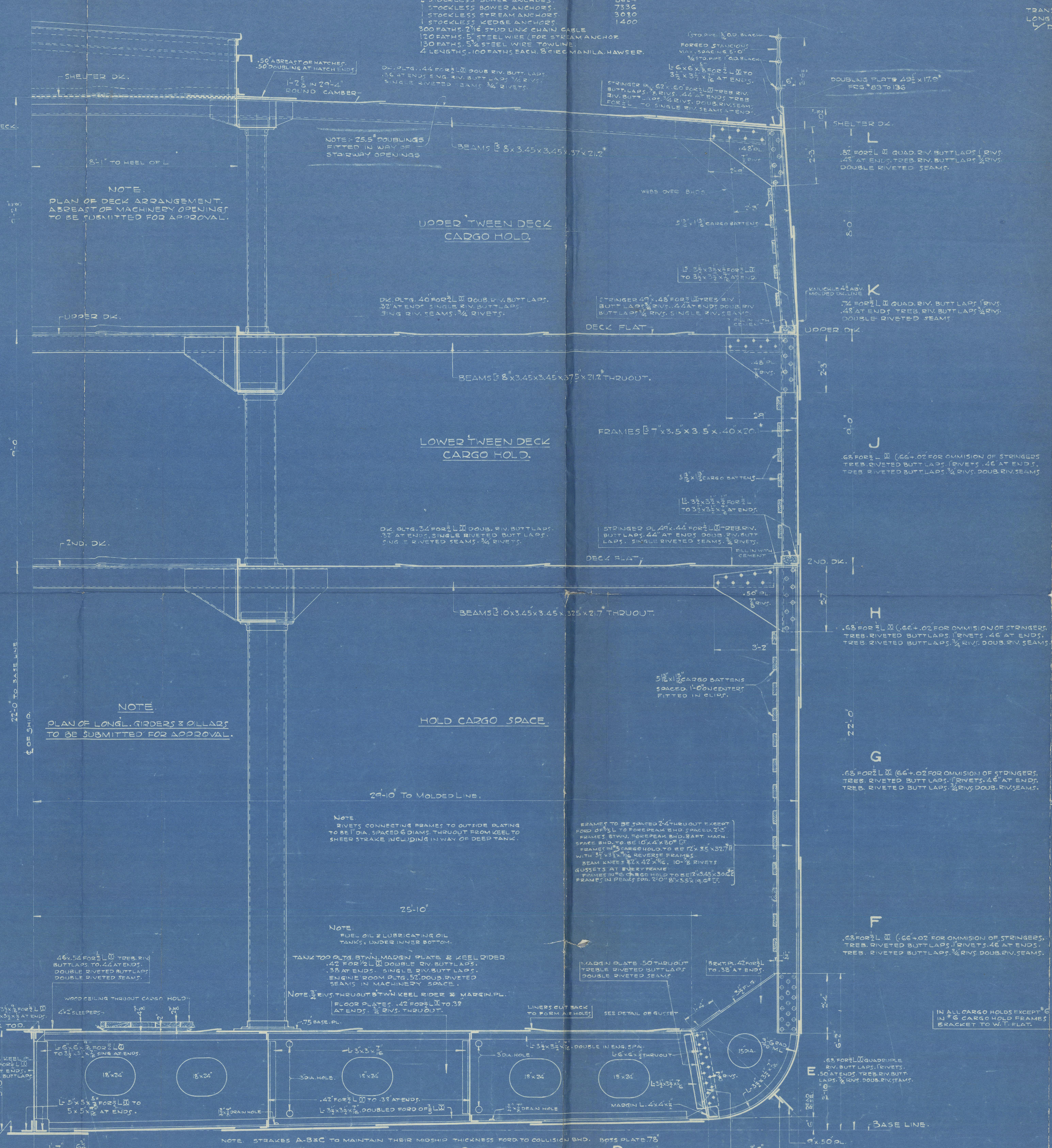
SECTION THRU HATCH OPENING IN SHELTER DECK.



SECTION THRU HATCH OPENING IN 2ND UPPER DECK.



OPEN FLOORS FITTED BETWEEN SOLID FLOORS.



DETAIL OF GUSSET VIEW EXPANDED.

EQUIPMENT NO.	
LONGITUDINAL NO.	40393
SHELTER DECK.	2673
HOUSE ON SHELTER DECK.	180
HOUSE ON SHELTER DECK.	230
HOUSE ON BRIDGE DECK.	43,741

EQUIPMENT.	
2 STOCKLESS BOWER ANCHORS.	8614
2 STOCKLESS BOWER ANCHORS.	7736
2 STOCKLESS TIE-UP ANCHORS.	3930
2 STOCKLESS KEDGE ANCHORS.	1400
100 FATHS 2 1/2" STEEL WIRE FOR STEAM ANCHOR.	
100 FATHS 2 1/2" STEEL WIRE FOR TOWLINE.	
2 LENGTHS 100 FATHS EACH 3/4" MANILA HAWSER.	

PRINCIPAL DIMENSIONS.	
LENGTH BWN. DS.	445'-0"
LENGTH OVERALL.	445'-0"
LENGTH OVERALL.	445'-0"
BEAM MOULDED.	58'-0"
DEPTH TO UPPER DECK.	31'-0"
DEPTH TO SHELTER DECK.	31'-0"
DEPTH TO LOWER DECK.	15'-0"

CLASS-LLLOYDS+100A1.	
TRANSVERSE NO. = (B+D)	9667
LONGITUDINAL NO. = (L+D)	40393
LONGITUDINAL NO. = (L+D)	40393

385 & 386

FOR CONTRACTORS

MERCHANT SHIPBUILDING CORPORATION

CHESTER, V.D. CHESTER, N.J.

MIDSHIP SECTION

MOTOR DRIVEN CARGO VESSEL

11,000 D.W.T.

SCALE 1/4" = 1'-0" DATE MARCH 25 1920

W.V.B. W.V.B. W.V.B.

DR NO 385

Lloyd's Register Foundation



APR 25 1922

012656-012662-0235

N/V FLAMINIA  
Belgian Freight  
E  
Merchant S.B. Corp<sup>ts</sup> No 386.  
Midship Section.  
S/S. "MISSOURIAN". REPORT No 4418



© 2021

Lloyd's Register  
Foundation

012656-012662-0235