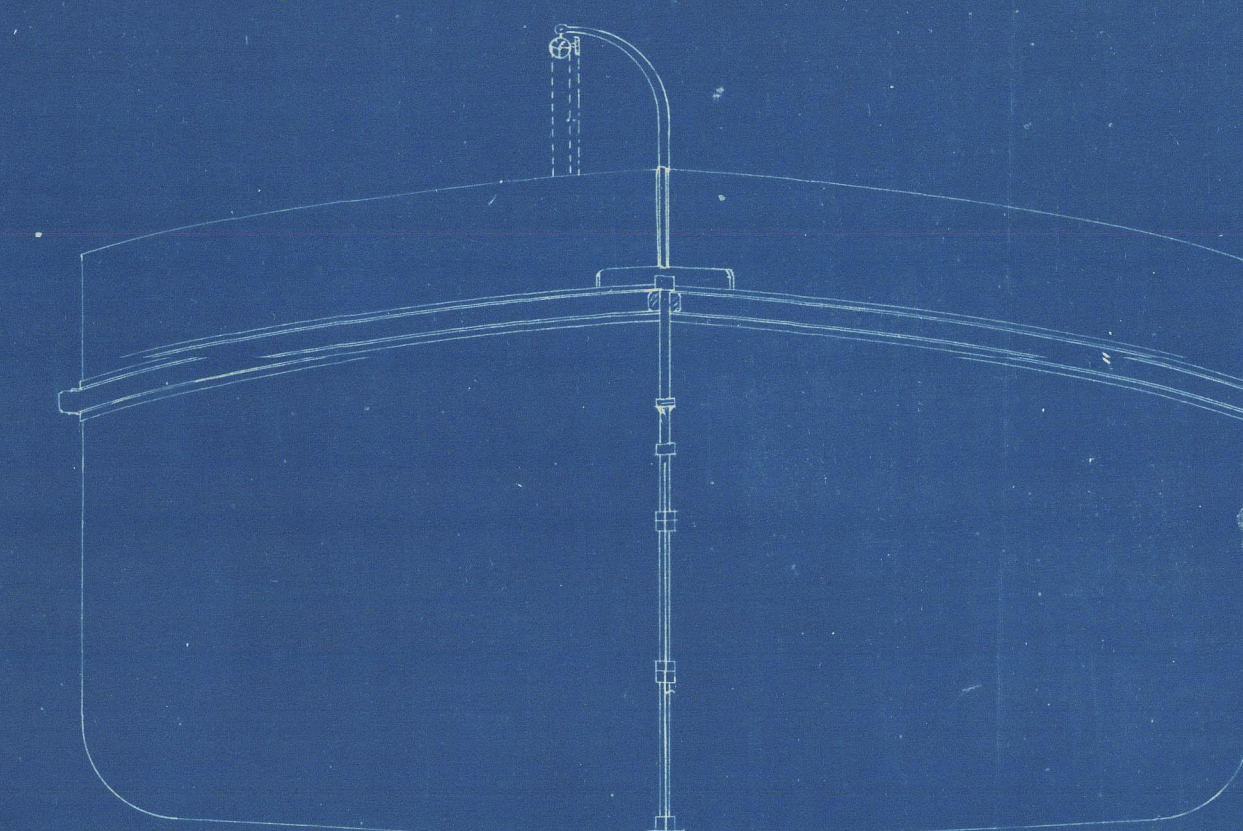
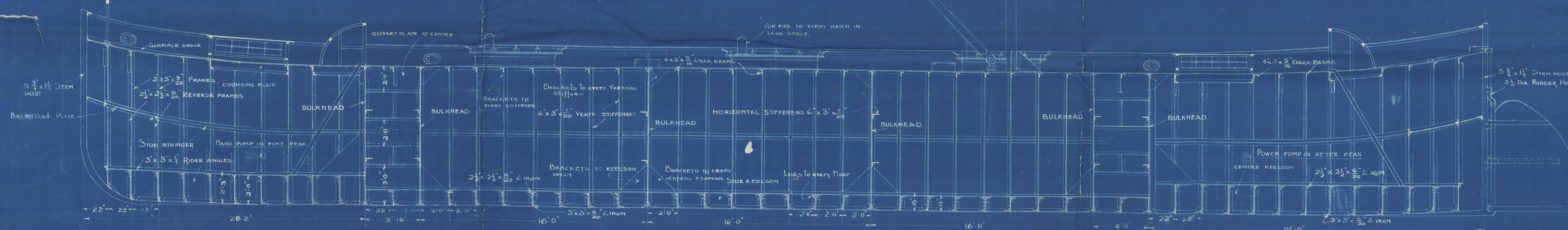


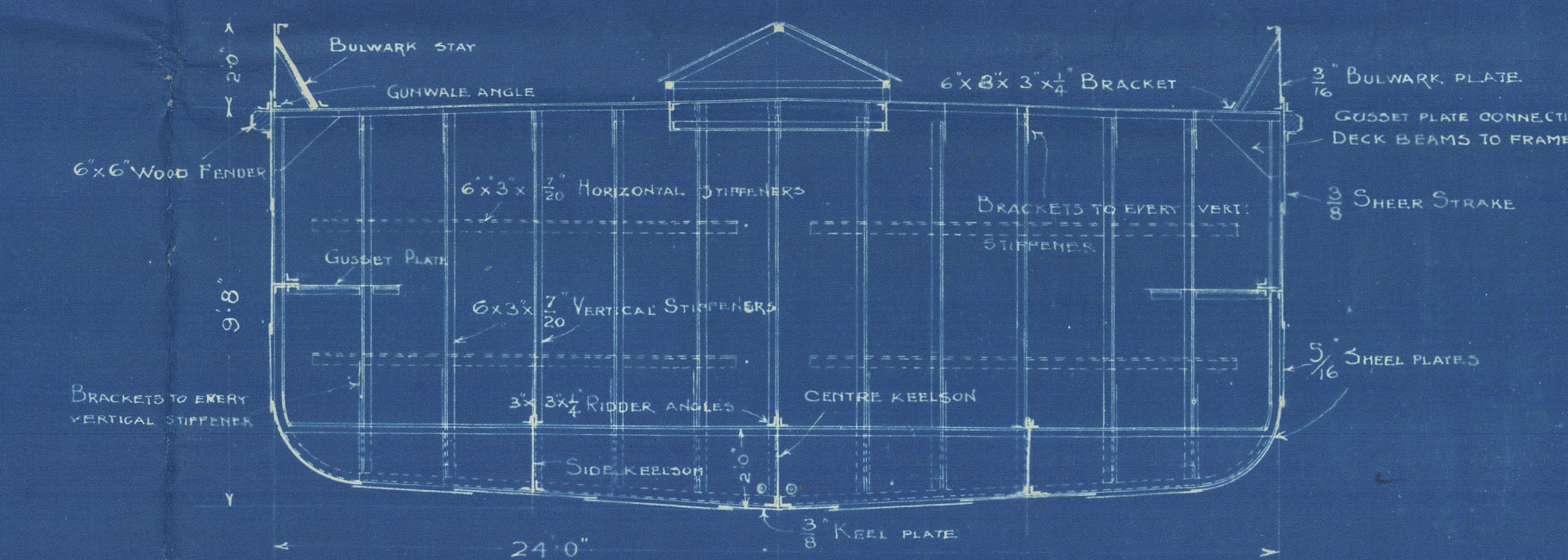
LONGIT. ELEVATION



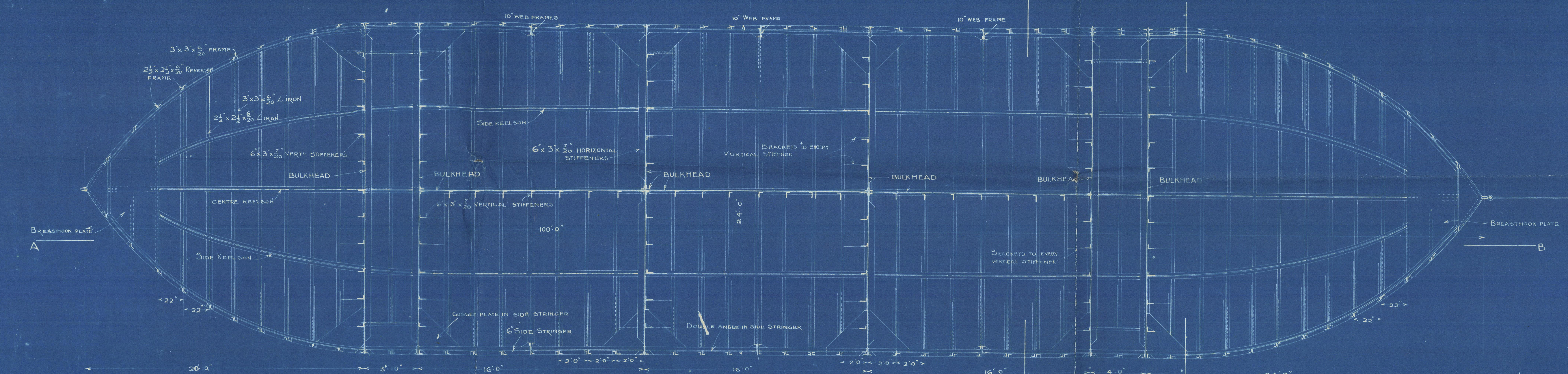
END ELEVATION



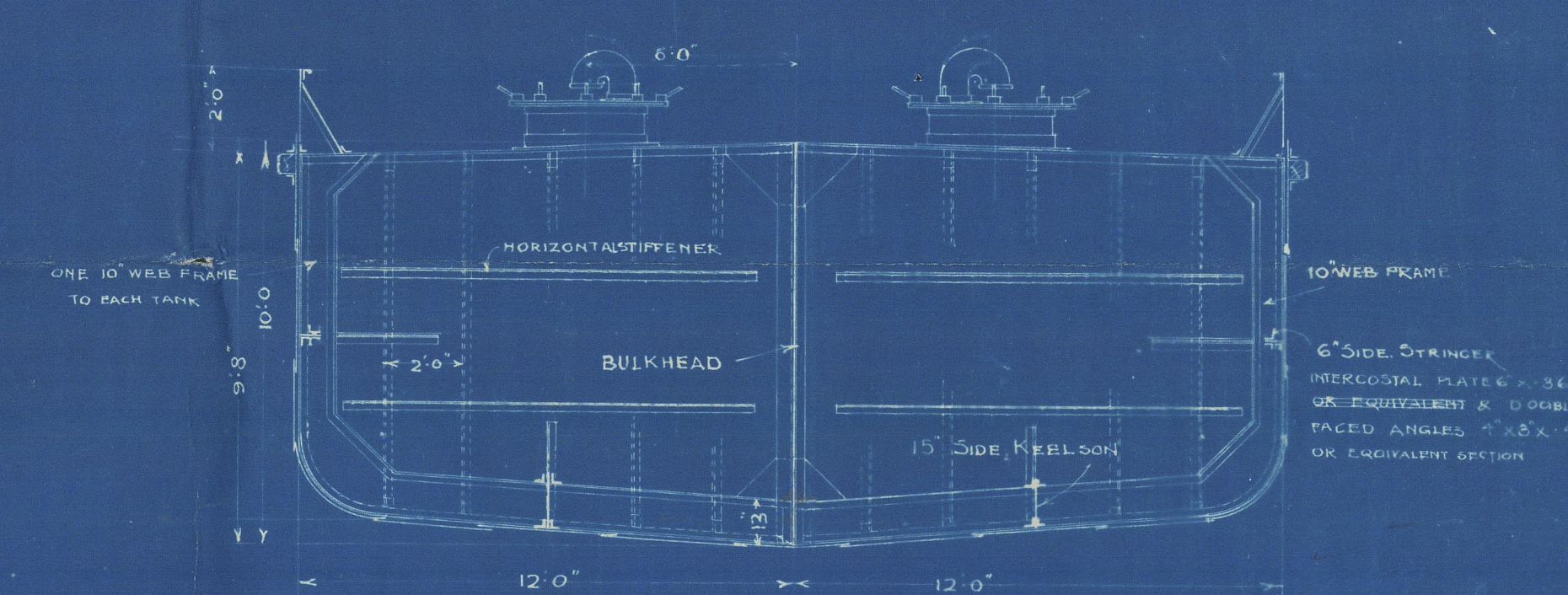
SECTION THRU AB



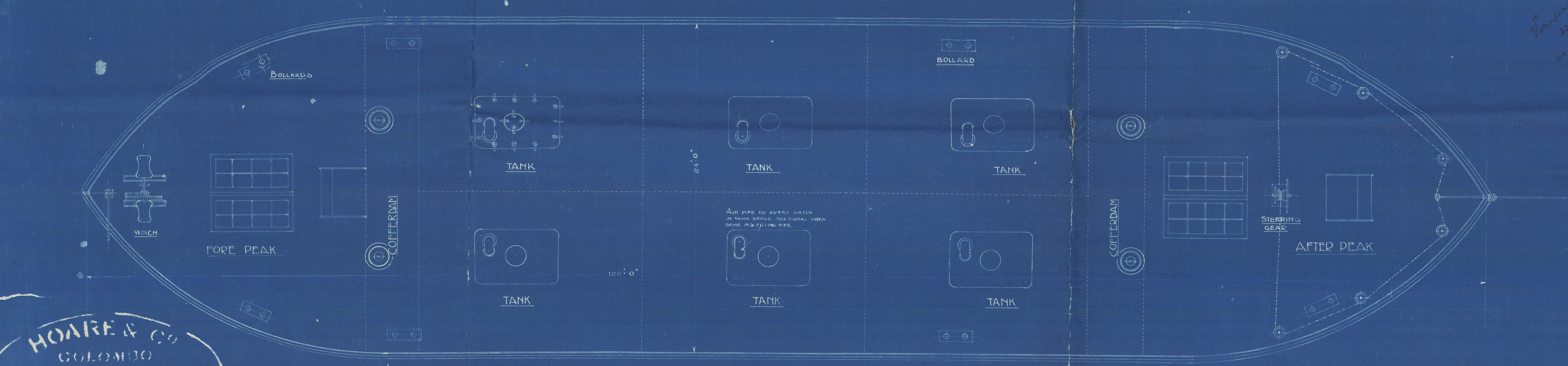
CROSS SECTION EF



SECTIONAL PLAN



SECTION THRU CD



PLAN

PARTICULARS OF BARGE	
STEM POST	5 1/2" x 1 1/2"
STEM POST	5 1/2" x 1 1/2"
RUDER POST	3 1/2" DIA.
BULWARK STRAKE	3" THICK
KEEL PLATE	3/8"
FLOOR	3/8"
INTERCOSTALS	3/8"
SHEEL PLATES	3/8"
FRAMES	3 1/2" x 5"
DECK BEAMS	4" x 3 1/2" x 5"
VERTICALS	6" x 3 1/2" x 5"
DECK PLATES	1/2" THICK, DECK STRAKES 3/8" THICK
BULKHEAD	3/8"
REVERSE FRAMES	2 1/2" x 2 1/2" x 5"

Handwritten note: 25 ft x 10 ft in 1850

HOARE & CO
COLOMBO
DRC N° 528A
DATE 13-8-21
COLOMBO ENGINEERING WORKS

OIL BARGE 100'X24'X10'
FORMED BY ANGLO-PERSIAN OIL CO. LTD. COLOMBO
APPROX. CAPACITY 300 TONS
Scale 1 inch = 1 foot

012646 - 012655 - 0002

"A. P. O. C. No. 10"

Lib. 354.



© 2021

Lloyd's Register
Foundation