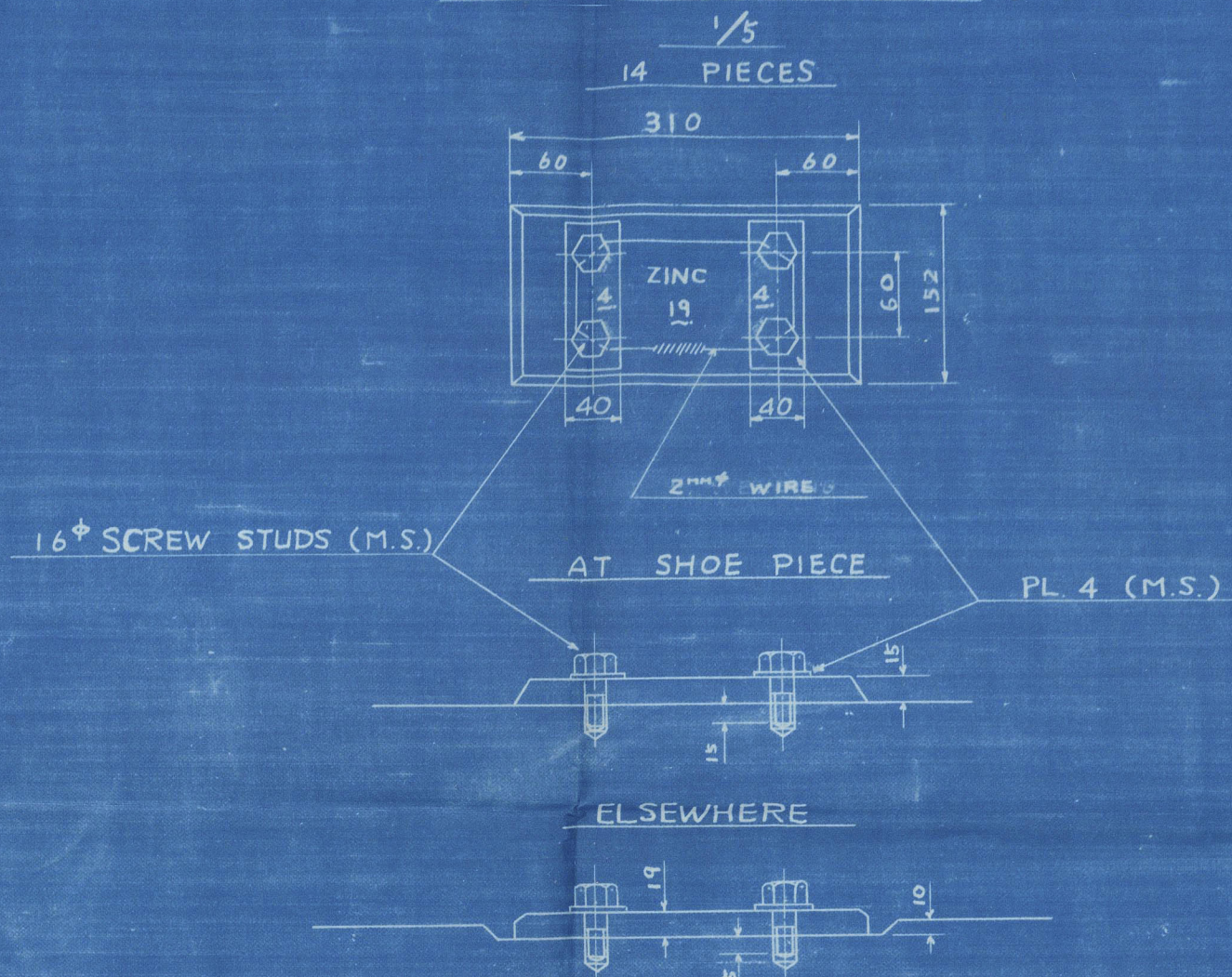


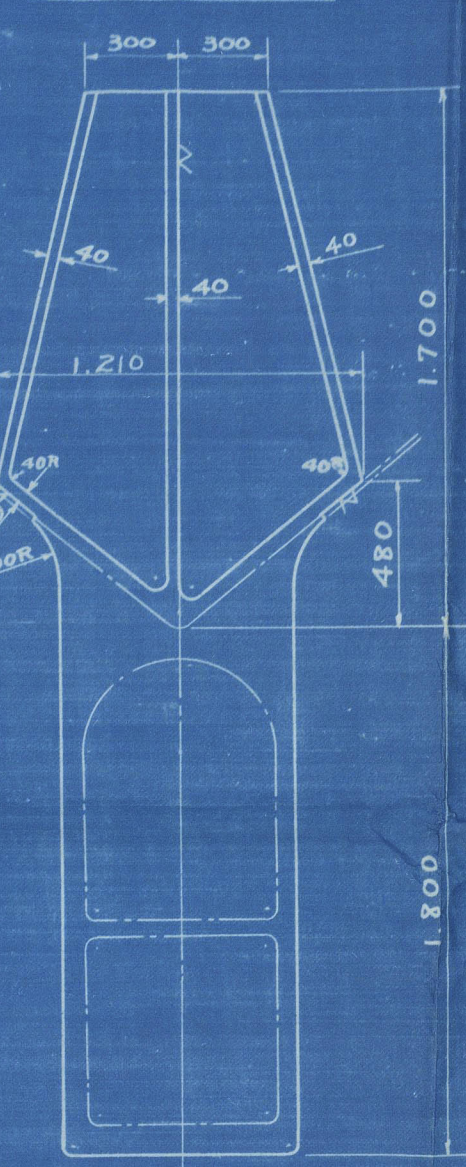
STERNFRAME

SCALE $\frac{1}{25}$

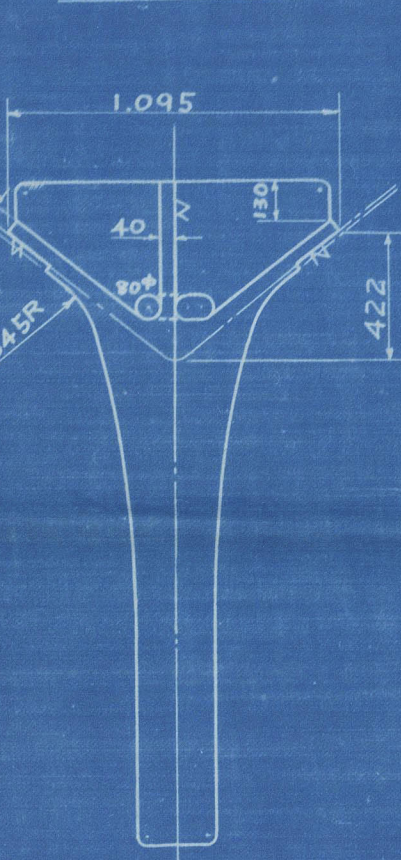
DETAIL OF ZINC PLATE



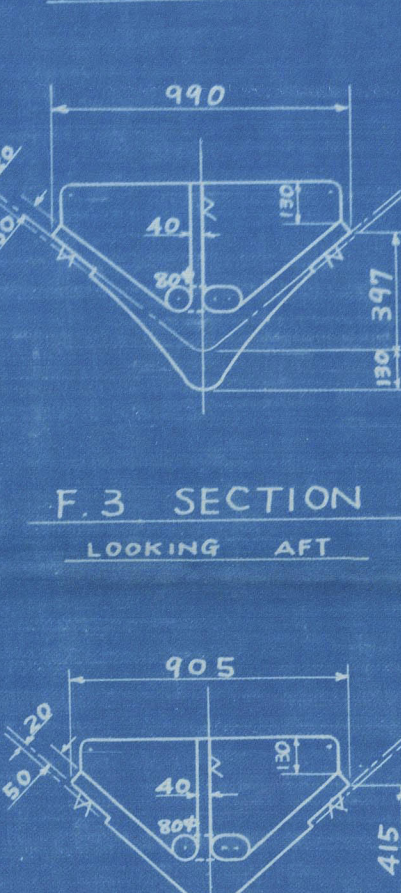
A.P. SECTION
LOOKING AFT



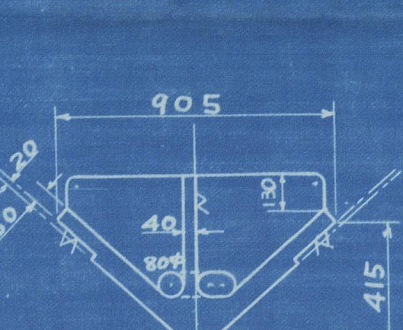
F.1 SECTION
LOOKING AFT



F.2 SECTION
LOOKING AFT



F.3 SECTION
LOOKING AFT



F.4 SECTION
LOOKING AFT



NOTE:-

LOYD'S CERTIFICATE TO BE DELIVERED
N.K.

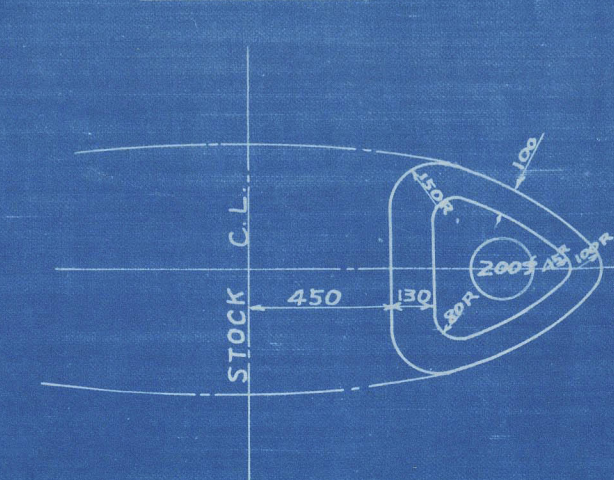
DEGREE OF FINISHING	
✓	SMOOTH SURFACE
▽	ROUGH FINISH
▽▽	MEDIUM FINISH
▽▽▽	FINE FINISH

MATERIAL OF STERNFRAME
CAST STEEL
WEIGHT 34.70 T.

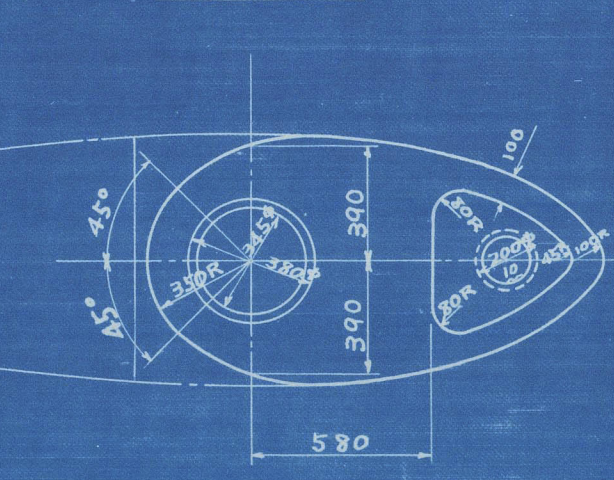
PARTICULARS OF RUDDER

RUDDER AREA	A	25.25 (271.7 ^{ft})
A/L x d		1/14
AREA RATIO TO FORE AND		
AFTER PARTS OF RUDDER STOCK C/L		1/2.65
CENTRE OF PRESSURE		
AFTERWARD FROM RUDDER STOCK C/L		0.887 (2.91 ^{ft})
MAX. SEA SPEED		16.5 KTS.

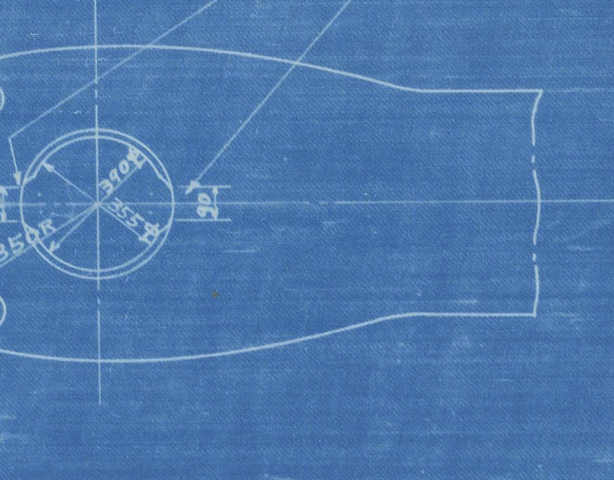
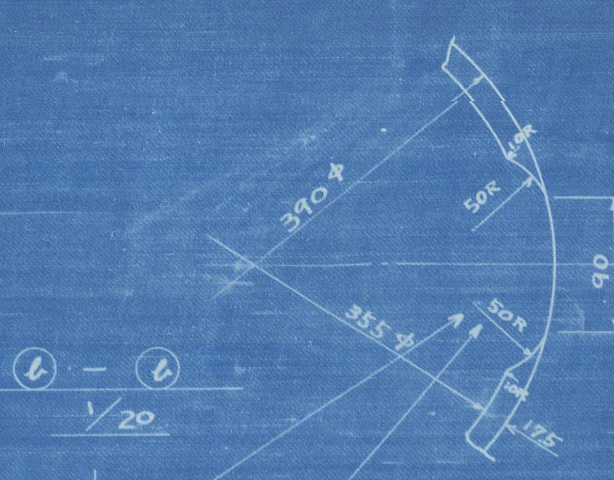
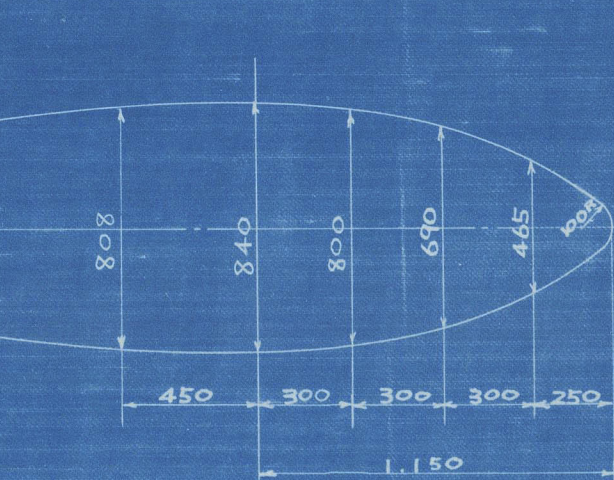
(A)-(A)



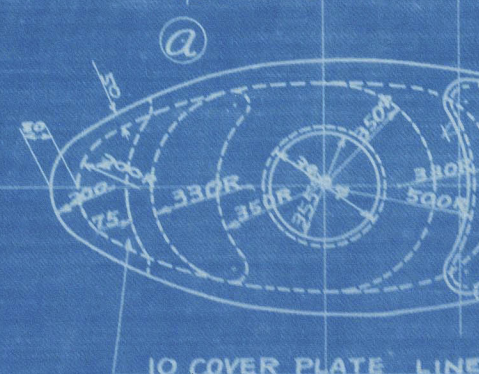
(B)-(B)



RUDDER TOP FORM



BASE LINE



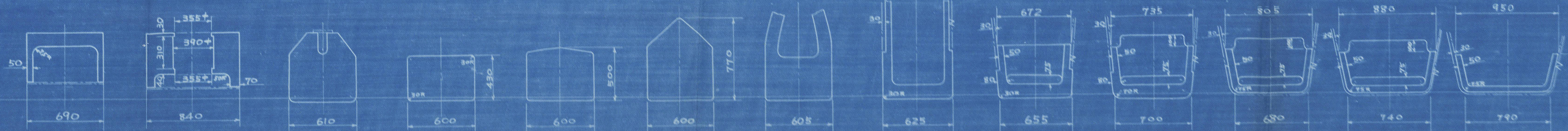
ZINC PLATE

SHAFT CENTRE LINE
SHAFT RAKE 18.42108°

4" 650 ABOVE BASE LINE (AT F.54)

BASE LINE

(A) SECTION PINTLE & SECTION F.1 SECTION F.2 SECTION F.3 SECTION F.4 SECTION F.5 SECTION F.6 SECTION F.7 SECTION F.8 SECTION F.9 SECTION F.10 SECTION FORE END SECTION



SNO. 477
KOH MARU
STERN FRAME
AS BUILT
DRAWING NO. H-5

SNO. 477
高邦丸
船尾骨棧
完成圖

尺度 $\frac{1}{25}$
株式會社
船務造船所
部長 次長
船殼設計課
課長 船殼設計課
出船 28年6月1日
出船 28年7月1日
出船 28年7月1日
出船 28年7月1日
出船 28年7月1日

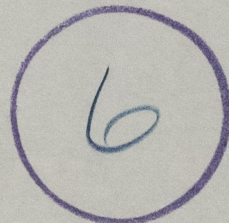
Lloyd's Register
Foundation

Kobe F.E. Rpt no. 1536

"KOTO MARU" ★

Sternframe (as built).

RECORDS DEPT.
LONDON



© 2021

Lloyd's Register
Foundation

012624-012630-0238