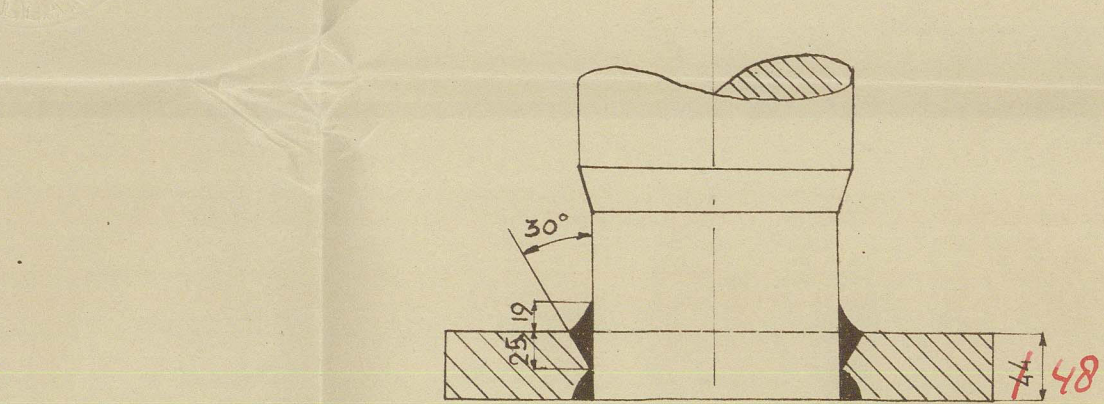
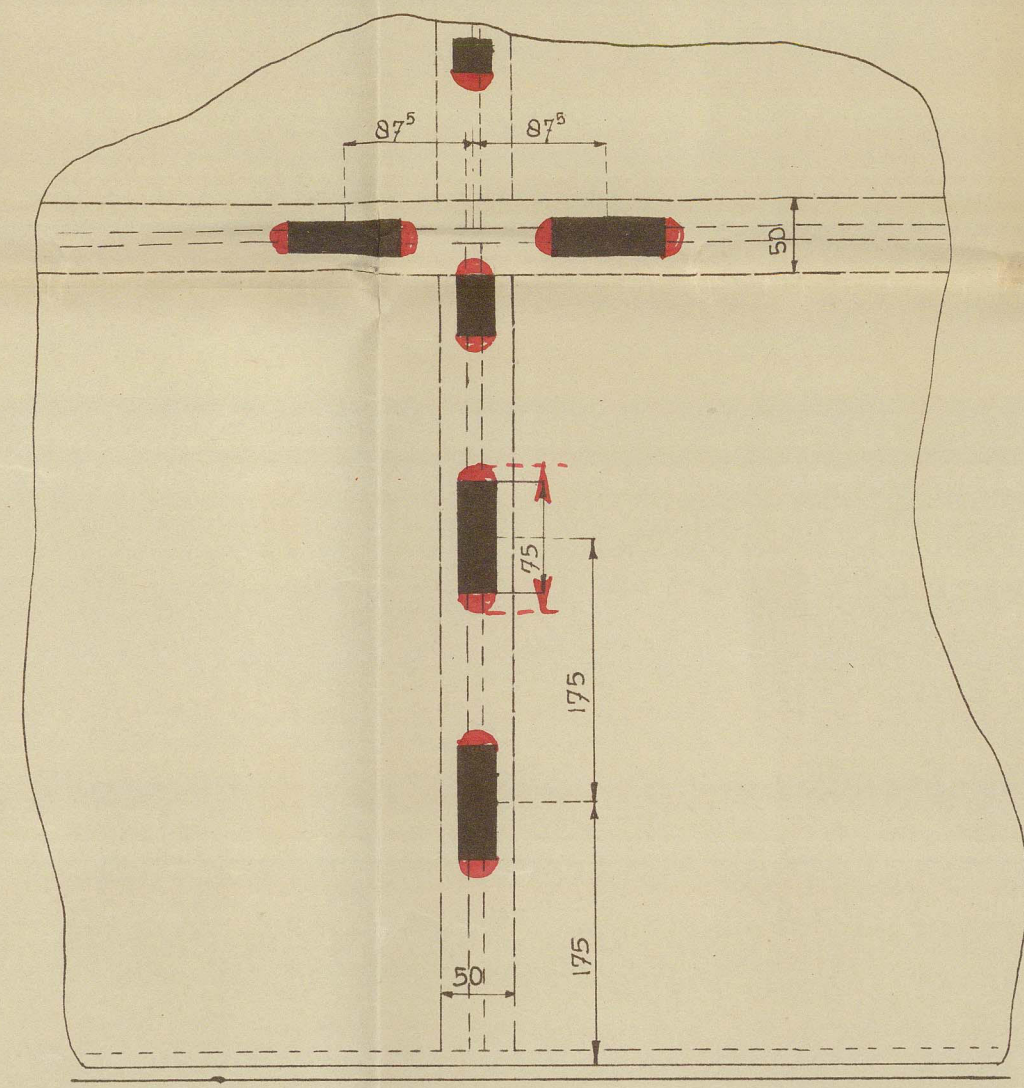


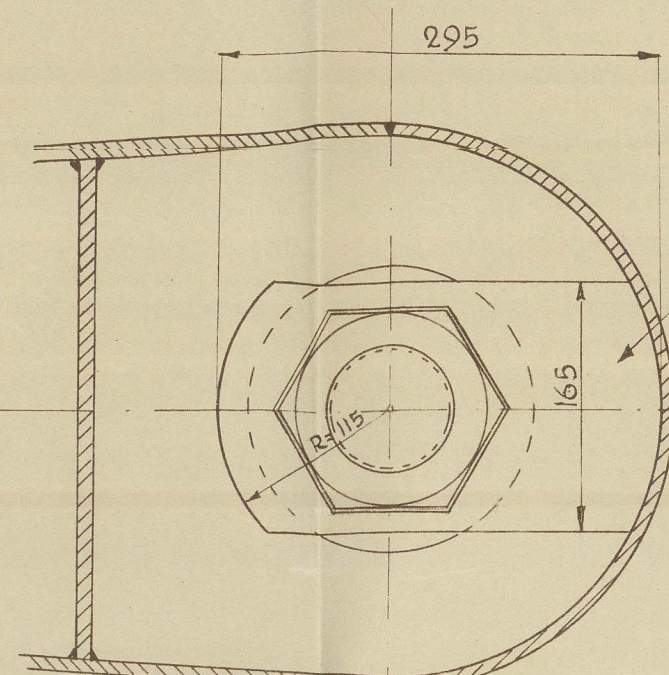
23-6-52



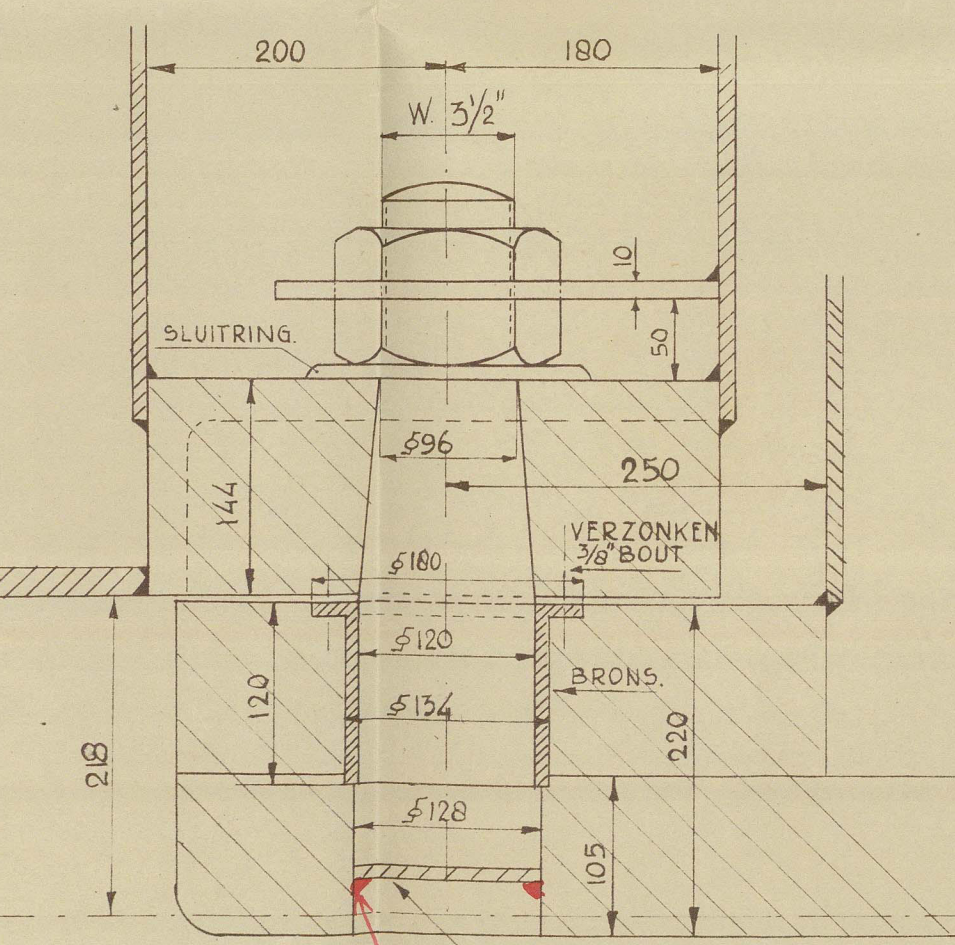
LASDETAIL ROERKOPPELING.



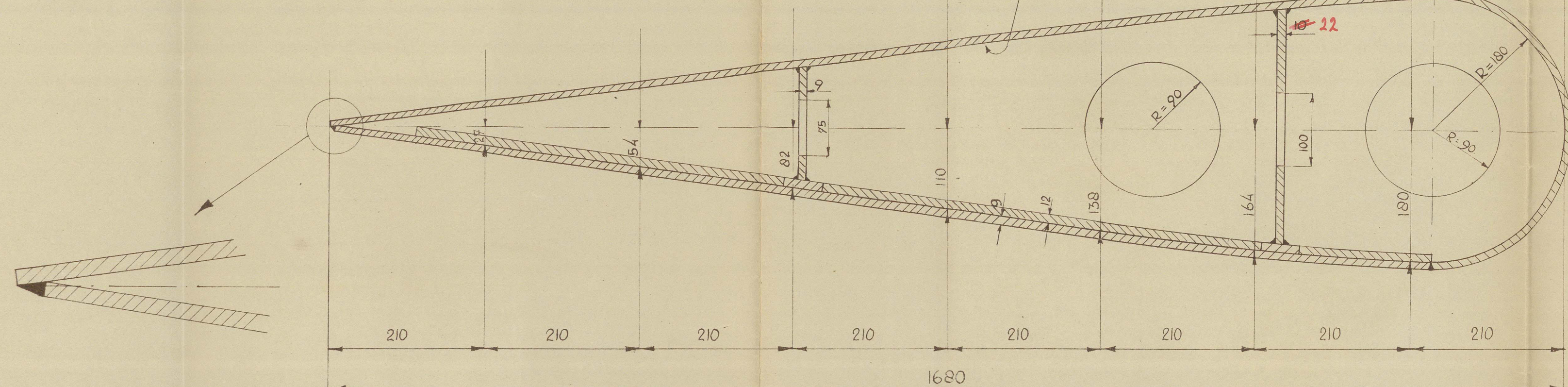
DETAIL SLEETLASSEN ROER.



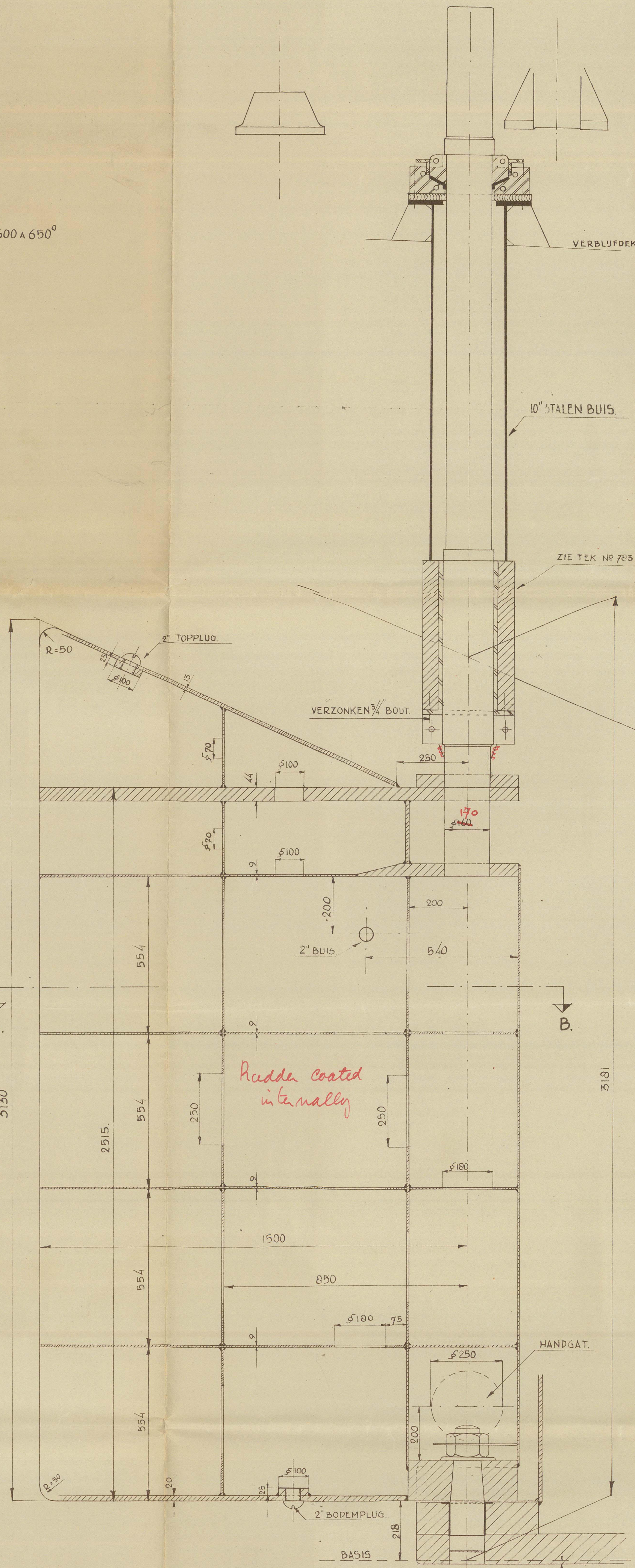
DETAIL PINTLE.



DETAIL PINTLE.

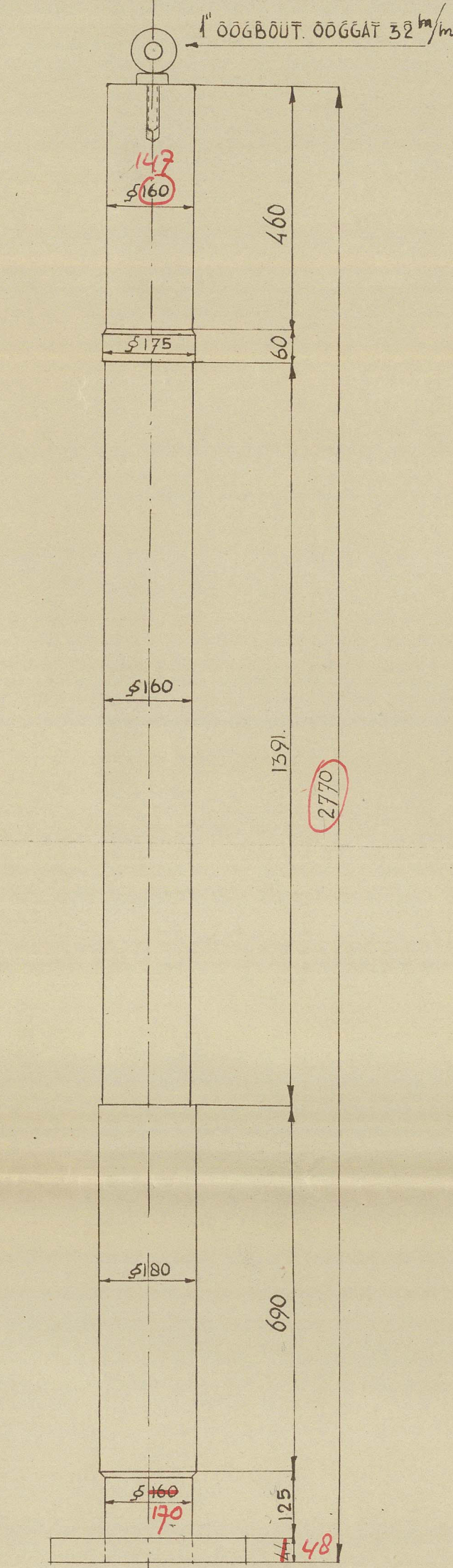


DOORSNEDE A-B SCH 1:5.

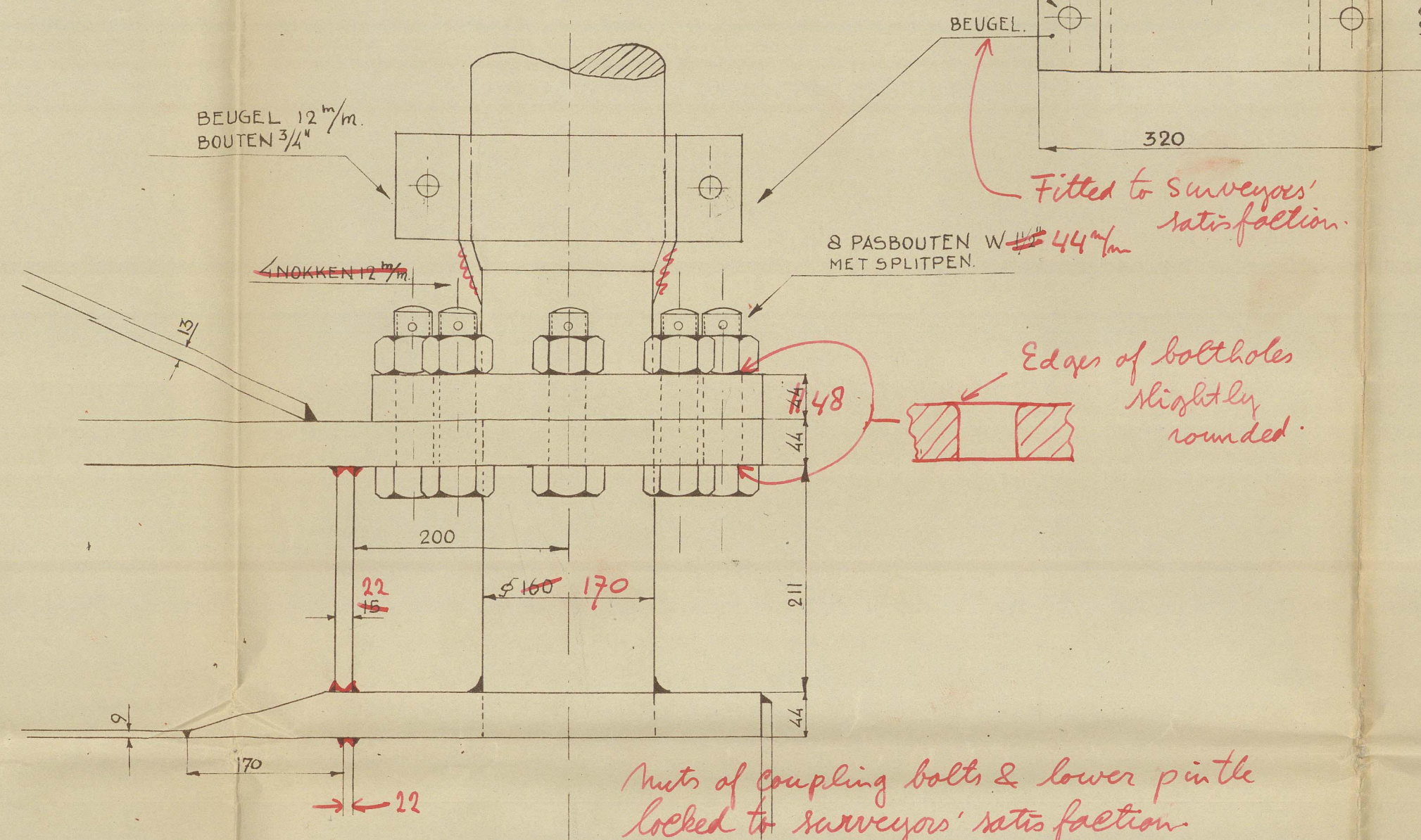


ROER EN KONING SCH 1:10.

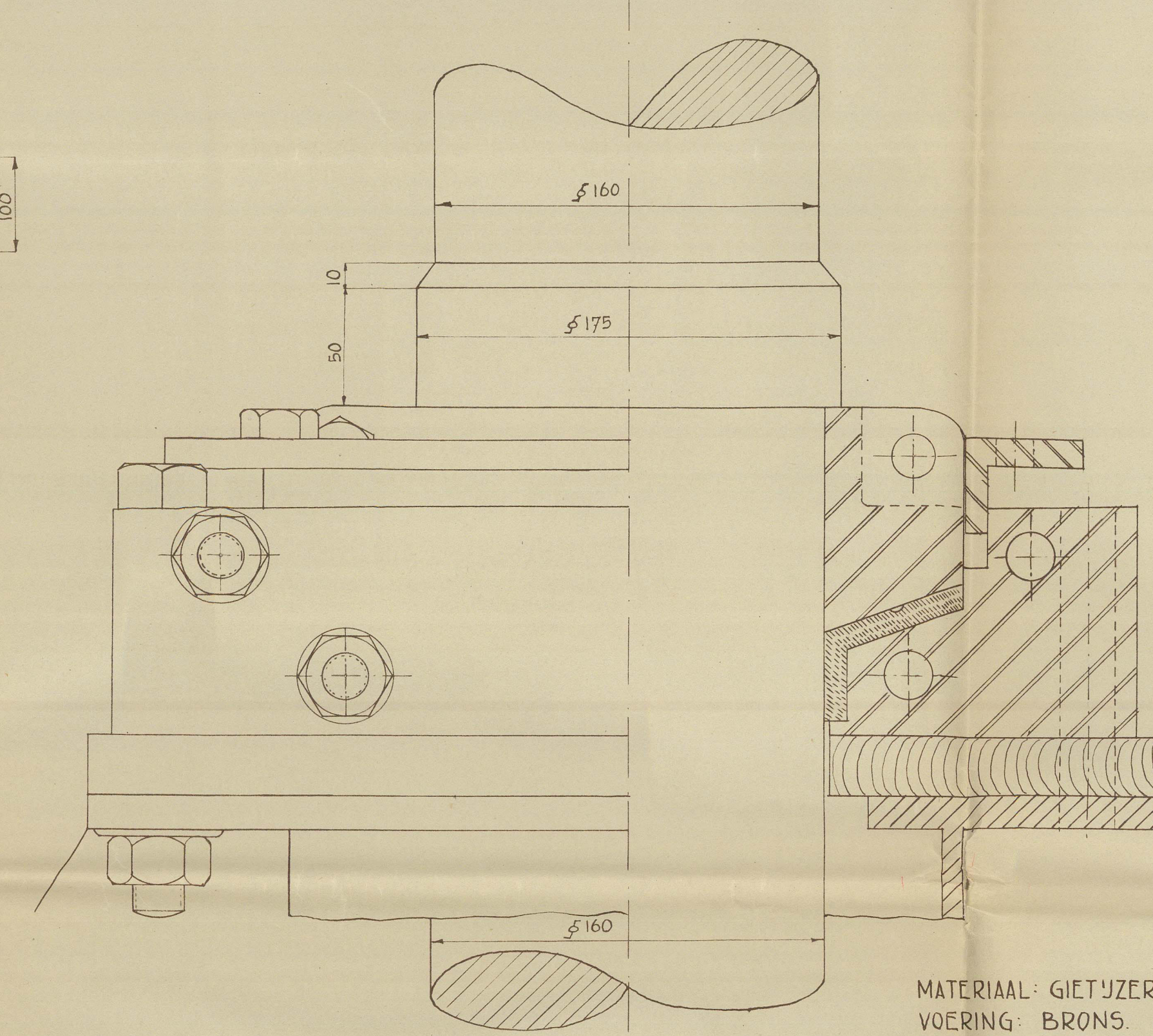
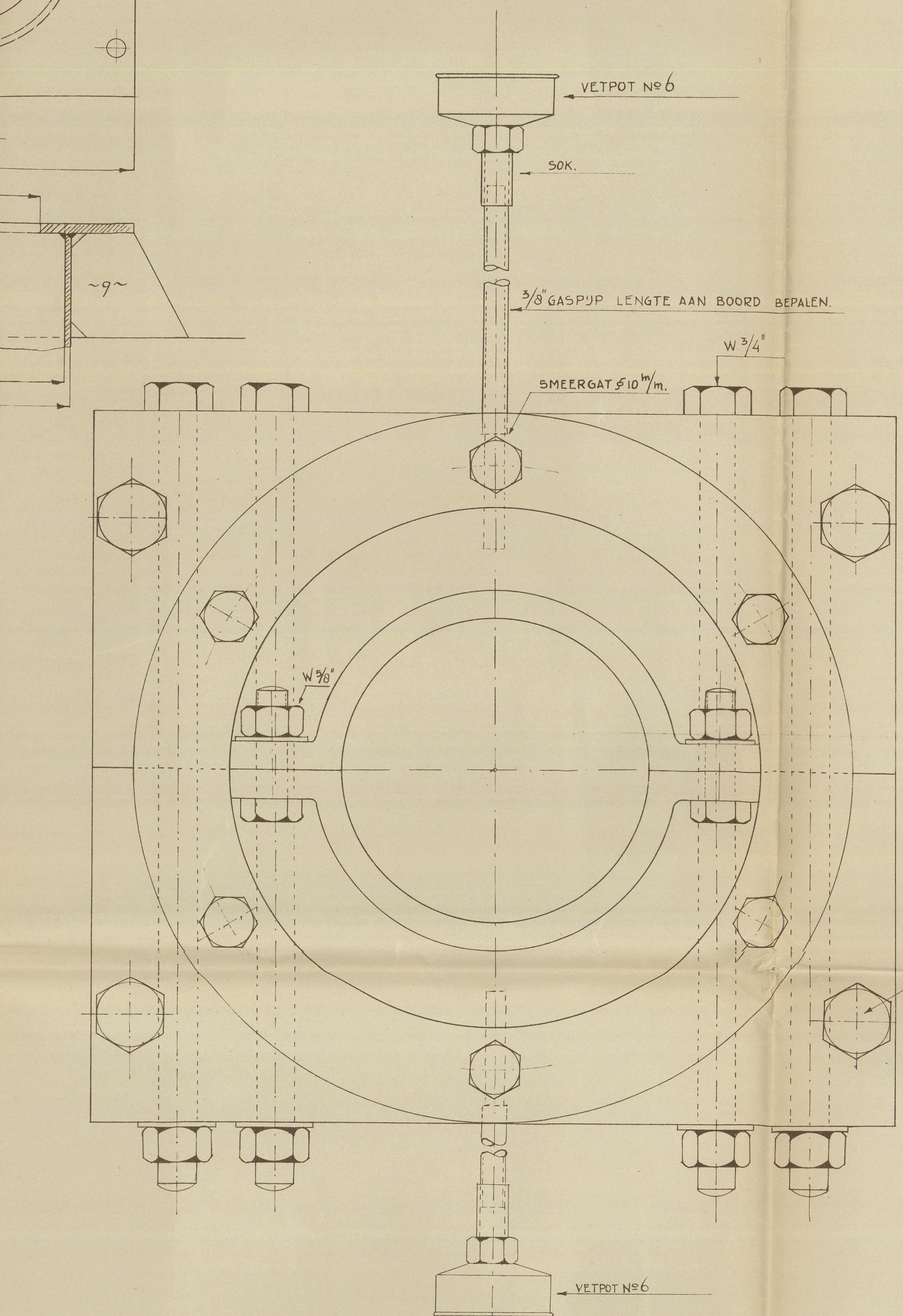
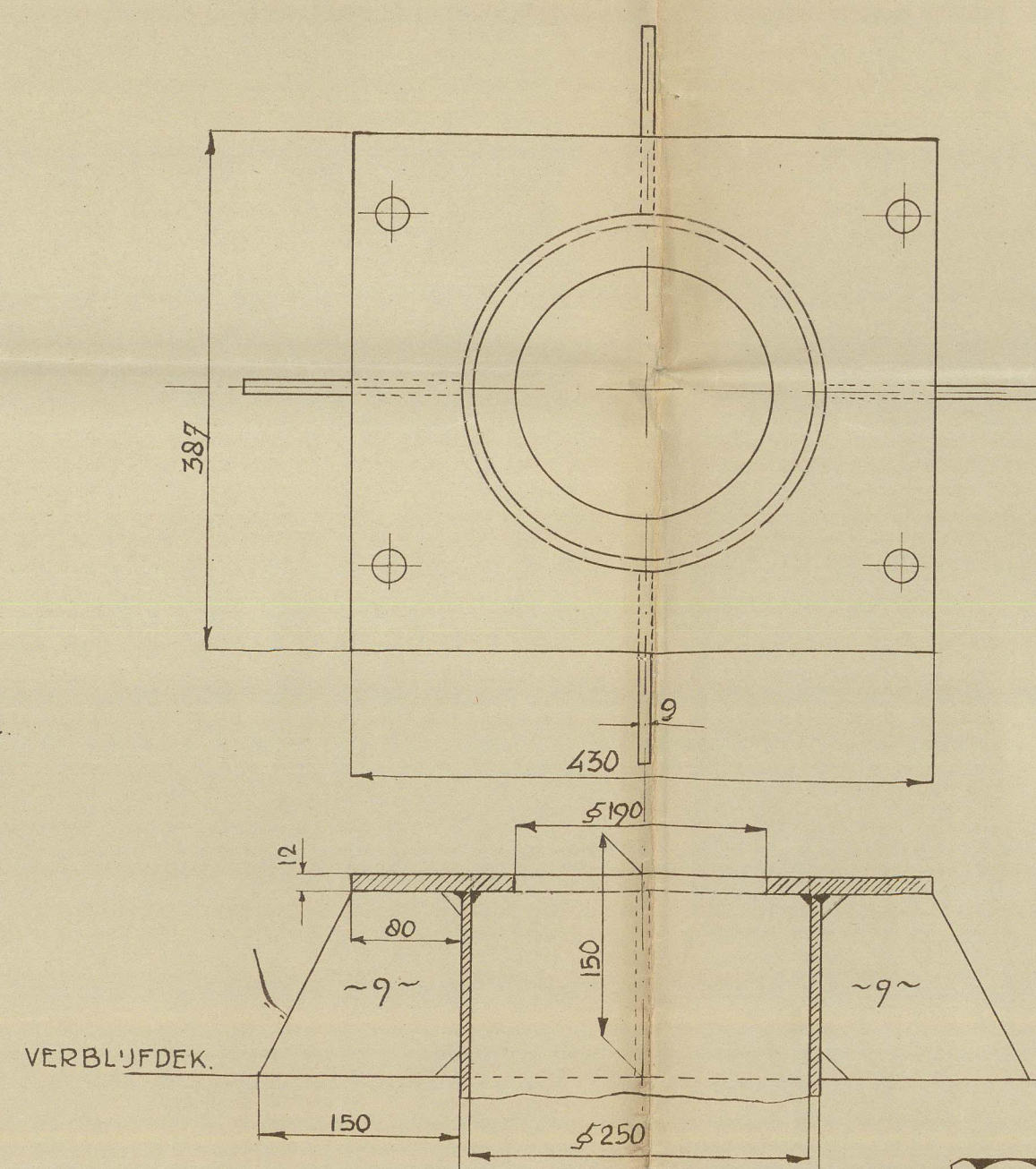
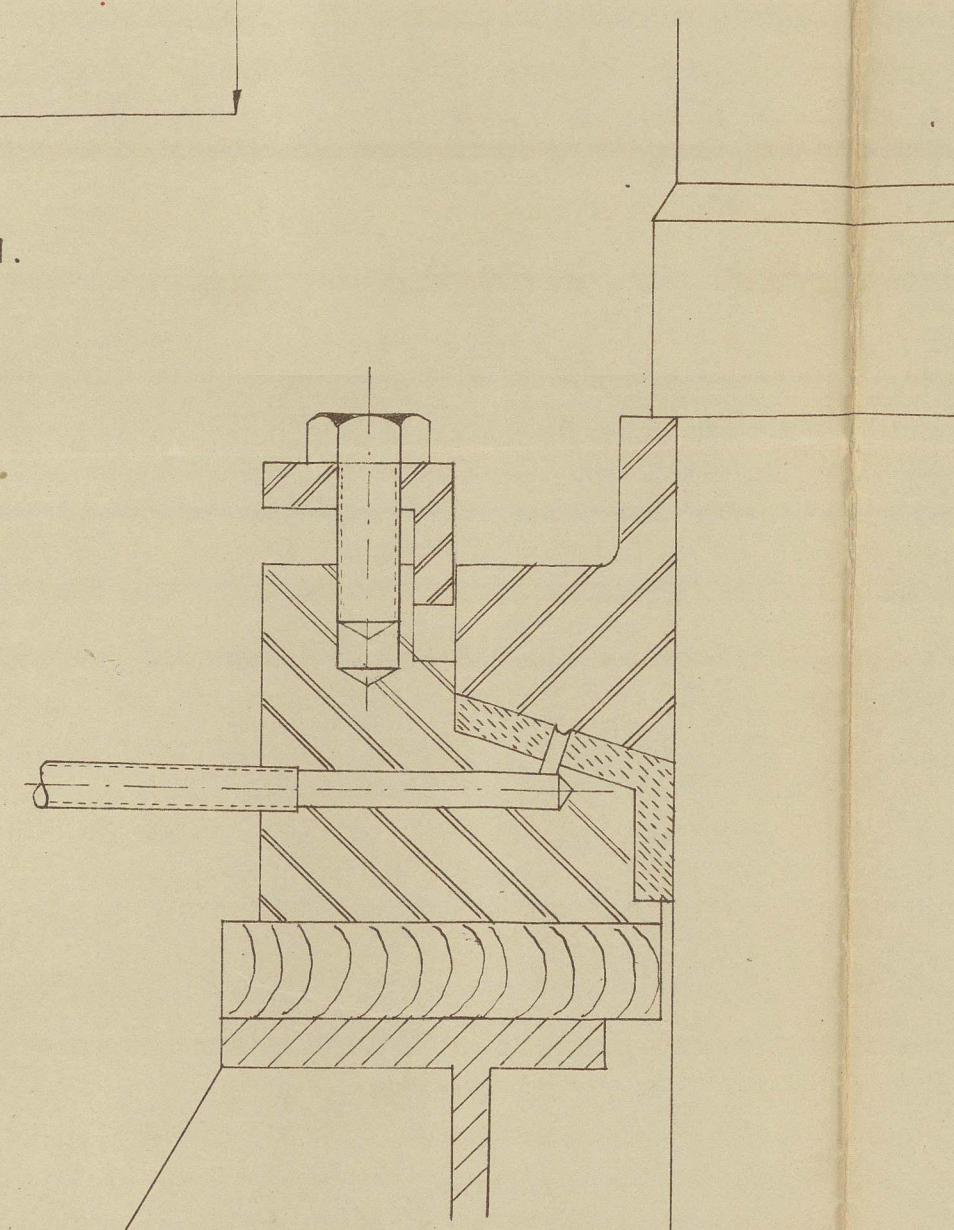
Final machining & alignment of rudder to surveyor's satisfaction when welding is completed.



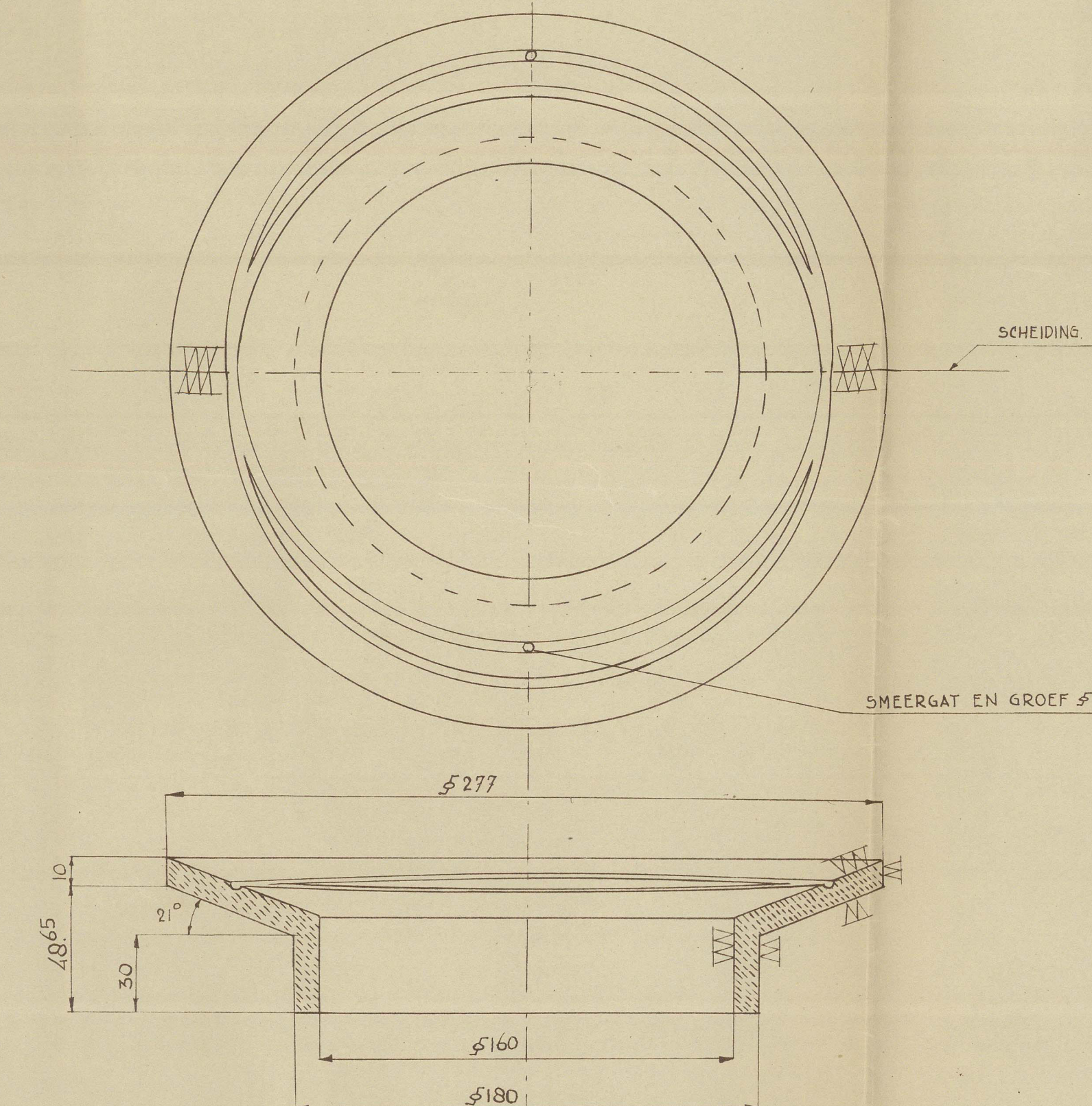
ROERKONING.



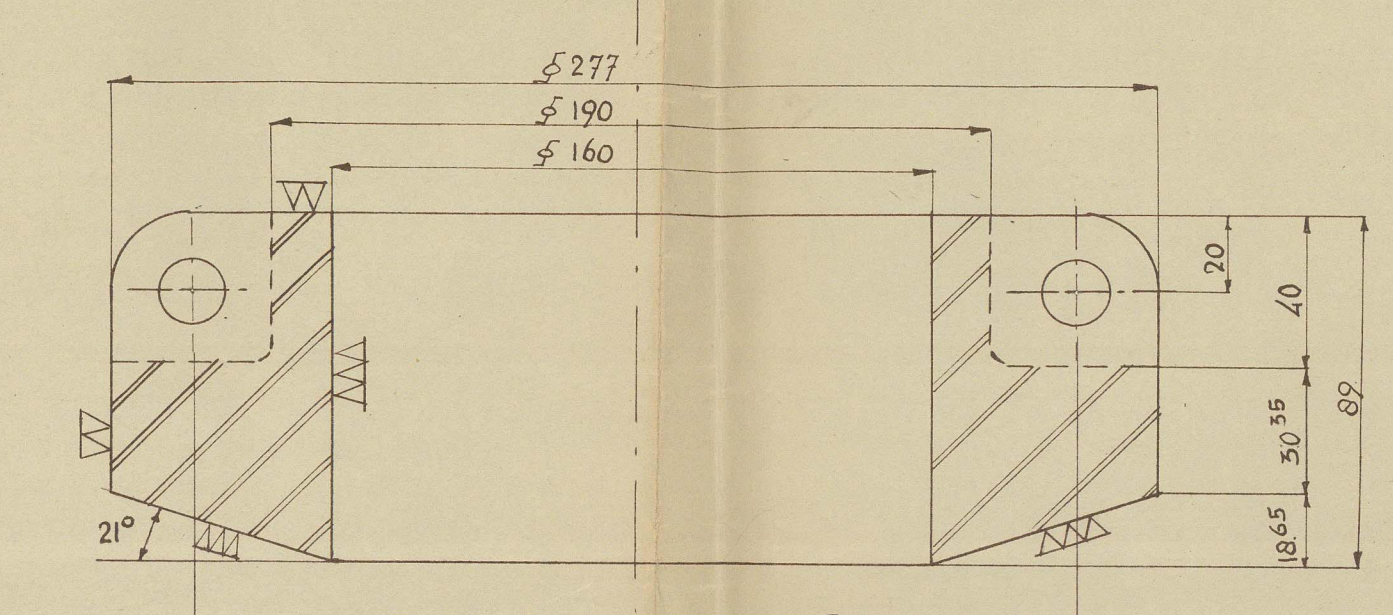
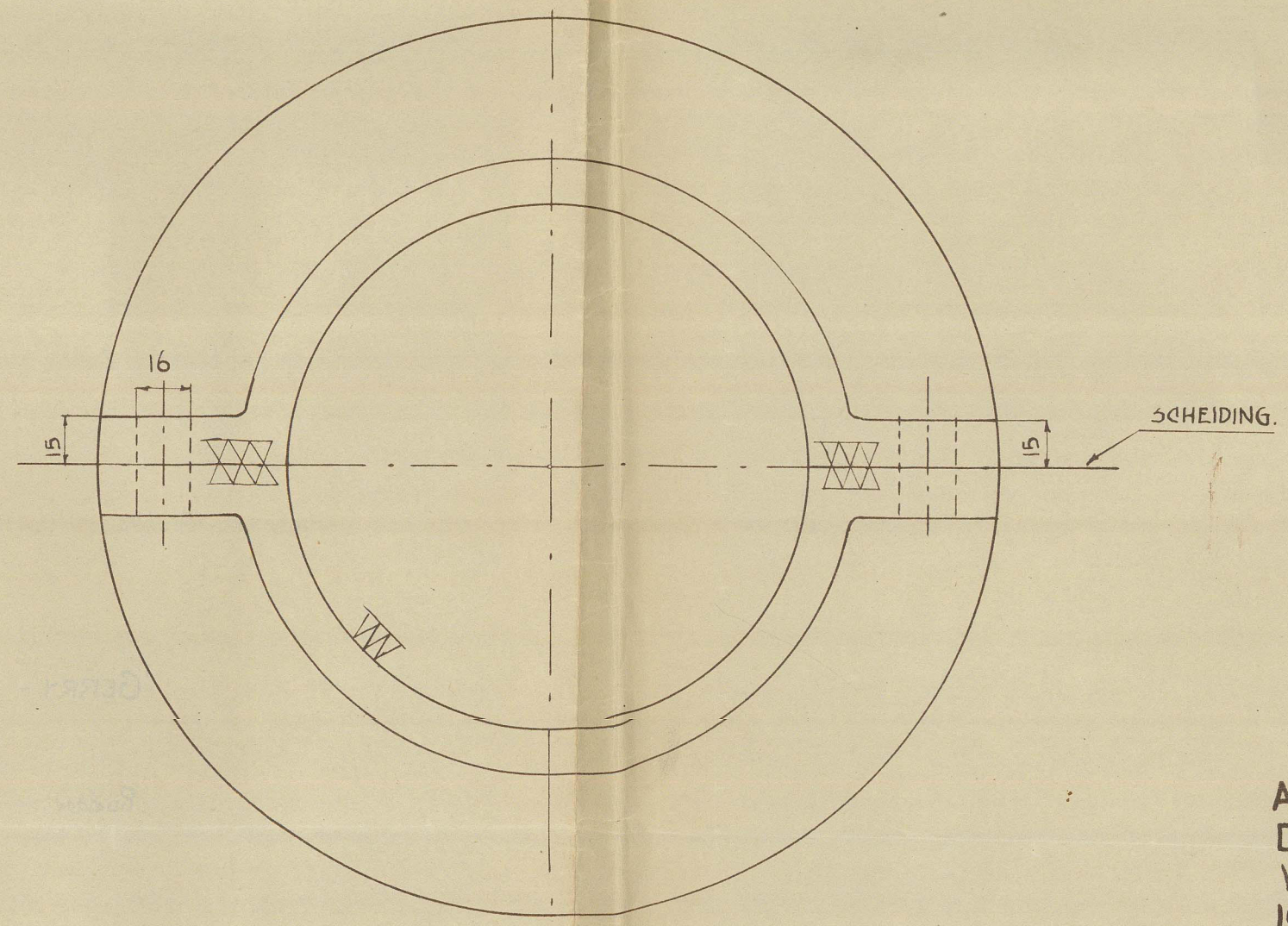
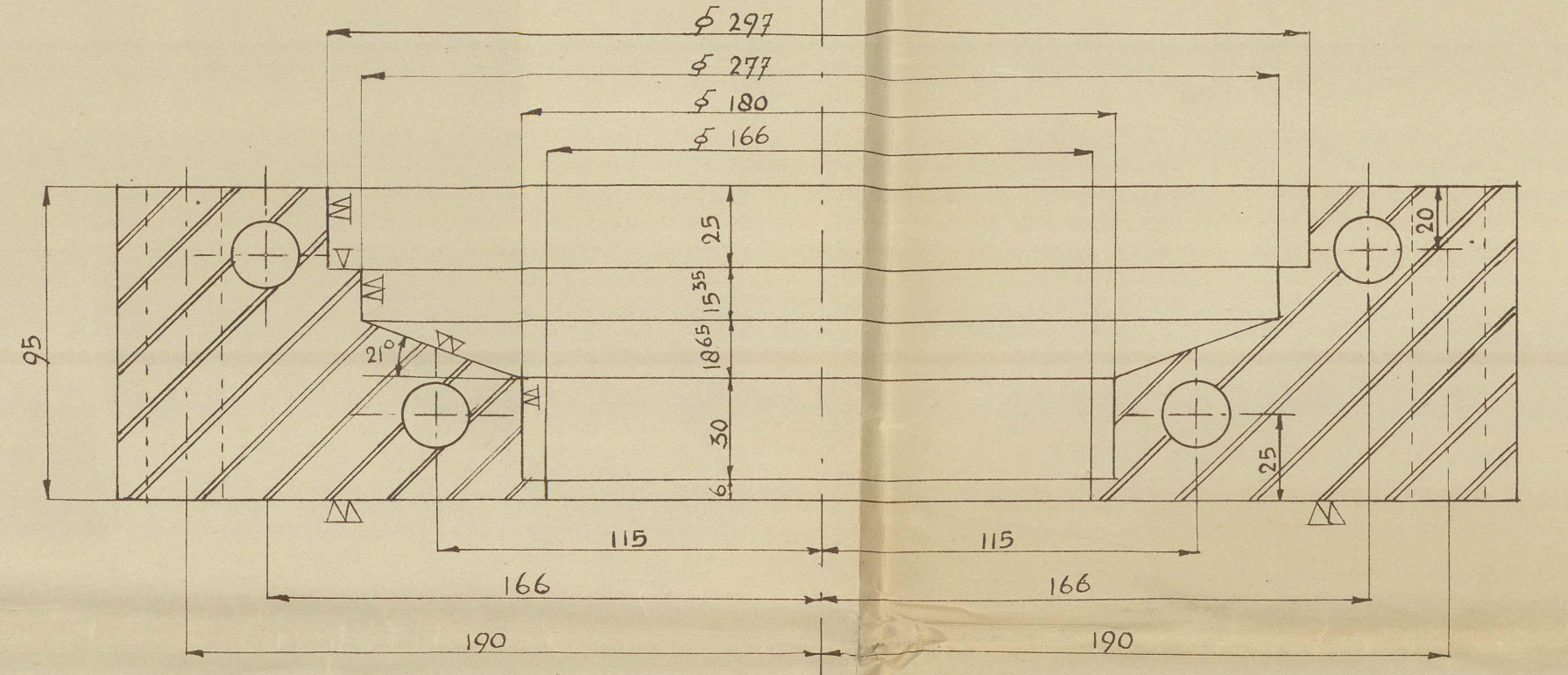
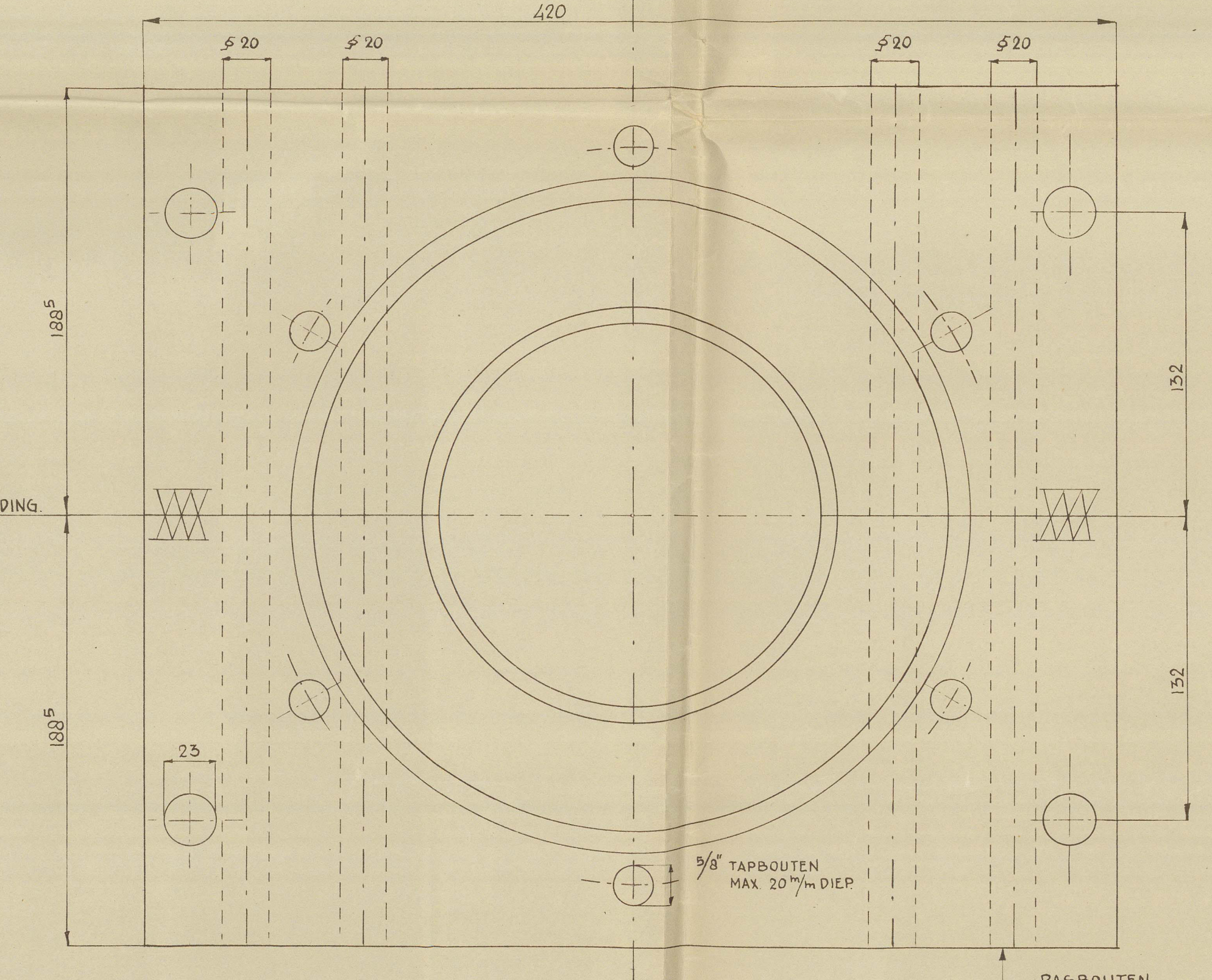
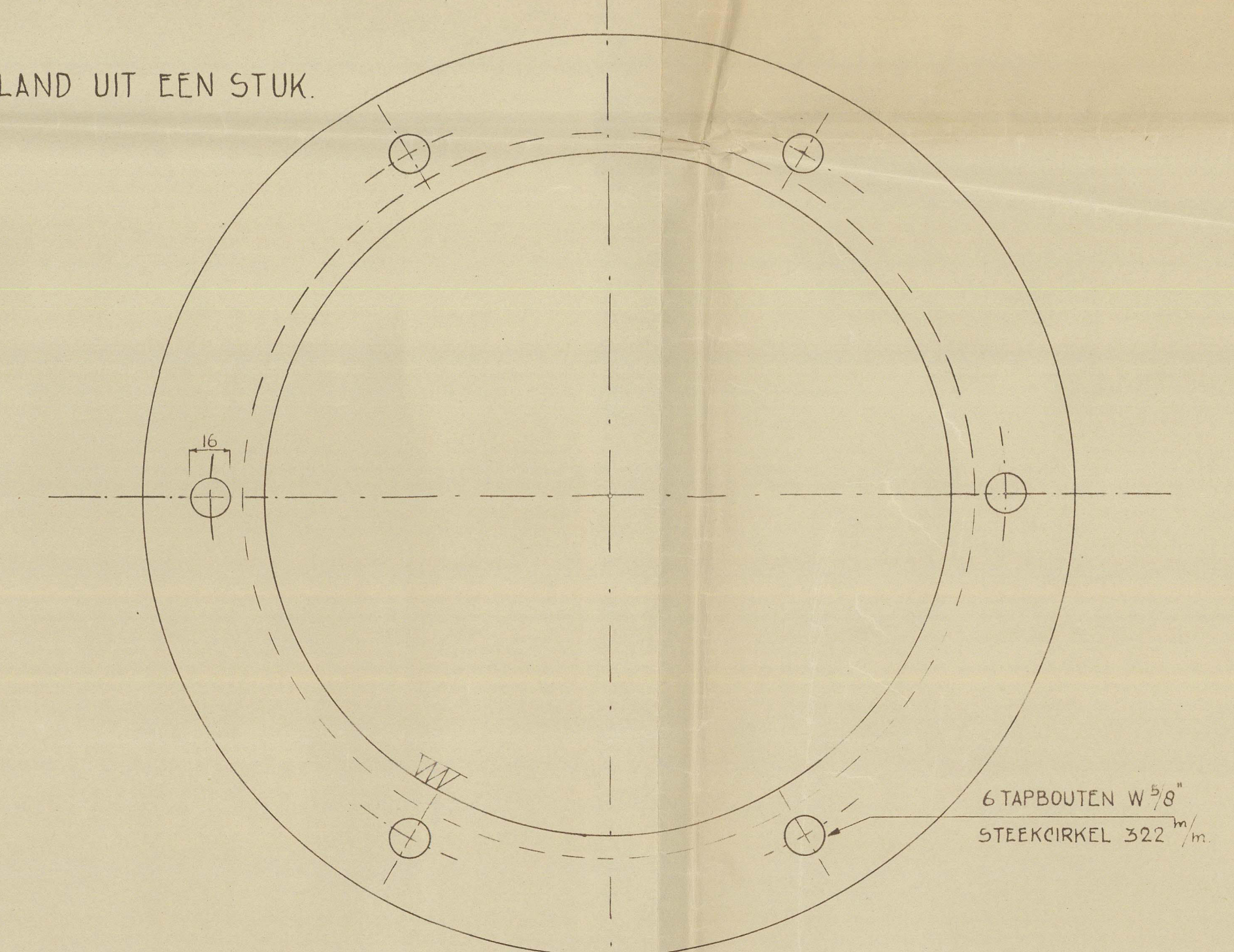
ROERKOPPELING.



ROERDRAGER SCH 1:2.



NB GLAND UIT EEN STUK.



A = 4.685 m.  
D = 0.785 m.  
V = 10 MUL  
100 AXD = 367.324  
ROERKONING 154 mm.  
at tiller.

23-6-52  
N.V. VERBODENDE SCH...  
ROER EN KONING  
MET ROERDRAGER  
14-5-1952  
803.

Autocorp Head Body Report 11-23242



RECORDS DEPT.  
LONDON

12

'GERRY - S'



Rudder



© 2021

Lloyd's Register  
Foundation

012620-012623-0006