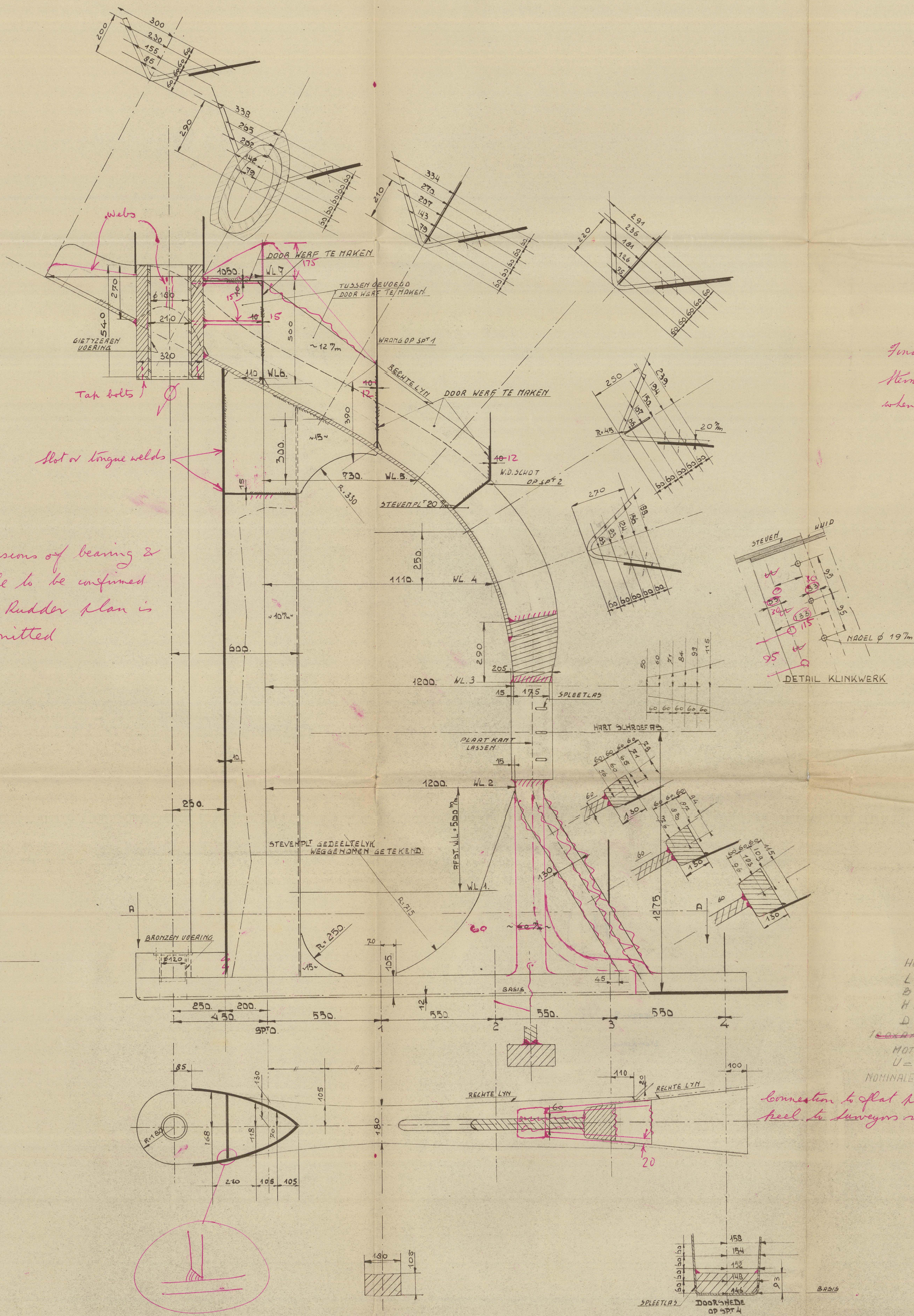
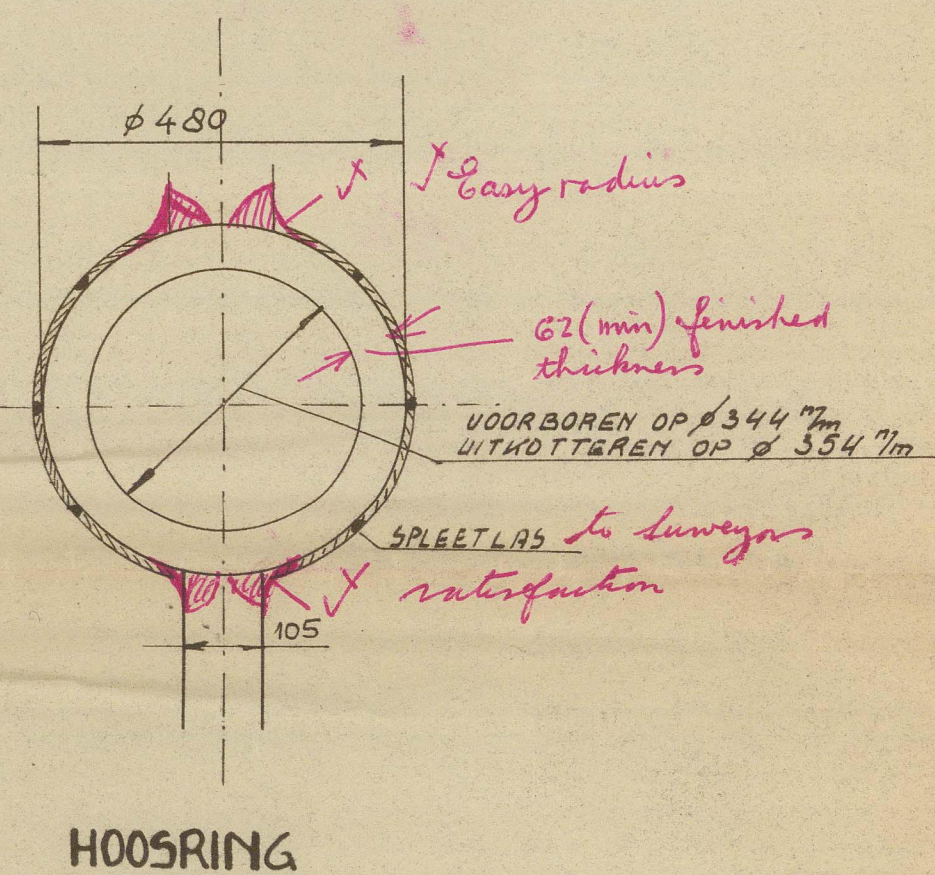


12-5-52



Final machining & alignment of  
sternframe to surveyors satisfaction  
when welding is completed.

Dimensions of bearing &  
pintle to be confirmed  
when Rudder plan is  
submitted



HOOFD AFMETINGEN

L = 54. m

B = 3.50

H = 605/403

D = 388

~~1000000~~ 333.5

MOTOR 750 PK

U = 10 KN

NOMINALE MAAT KONING ~~110 mm~~

Connection to flat plate  
heel to surveyors satisfaction

LONDON COPY

21  
12-5-52

NUTER. SCHEEPSBOUWNIJ TERHEIJZEN  
ACHTERSTEVEN

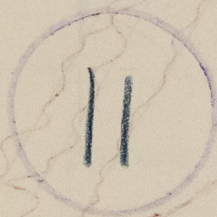
TECH. N° 782

Auteurs: J. van der Vliet, Report N° 28246

017620-01223-0005



RECORDS DEPT  
LONDON



'GERRY-S'



Stemframe



© 2021

Lloyd's Register  
Foundation

012620-012623-0005