

BIBLIOGRAPHY

1) DESIGNED BY SHIMIZU
SHIPYARD N.S.T. CO. LTD.
(JUL-25-1955)

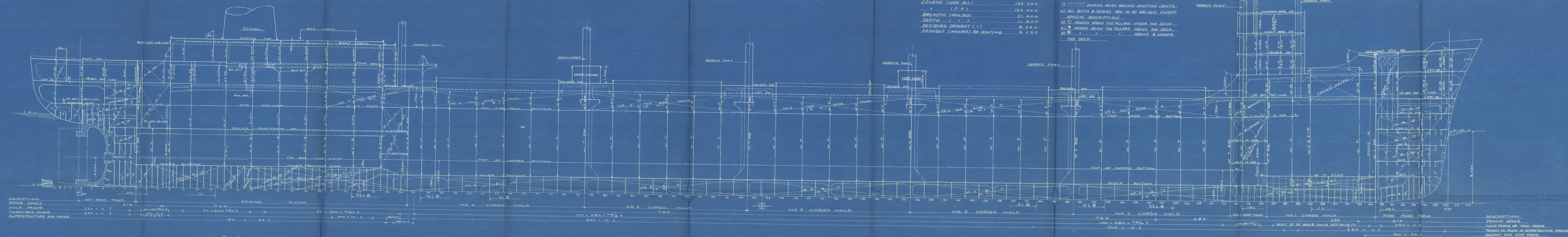
PRINCIPAL DIMENSIONS.

LENGTH (OVER ALL)	167.200
" (P.P.)	153.000
BREADTH (MEASURED)	21.000
DEPTH	11.500
DESIGNED DRAUGHT (+)	8.250
DRAUGHT (MEASURED) FOR SCANTLING	8.250

NOTES:

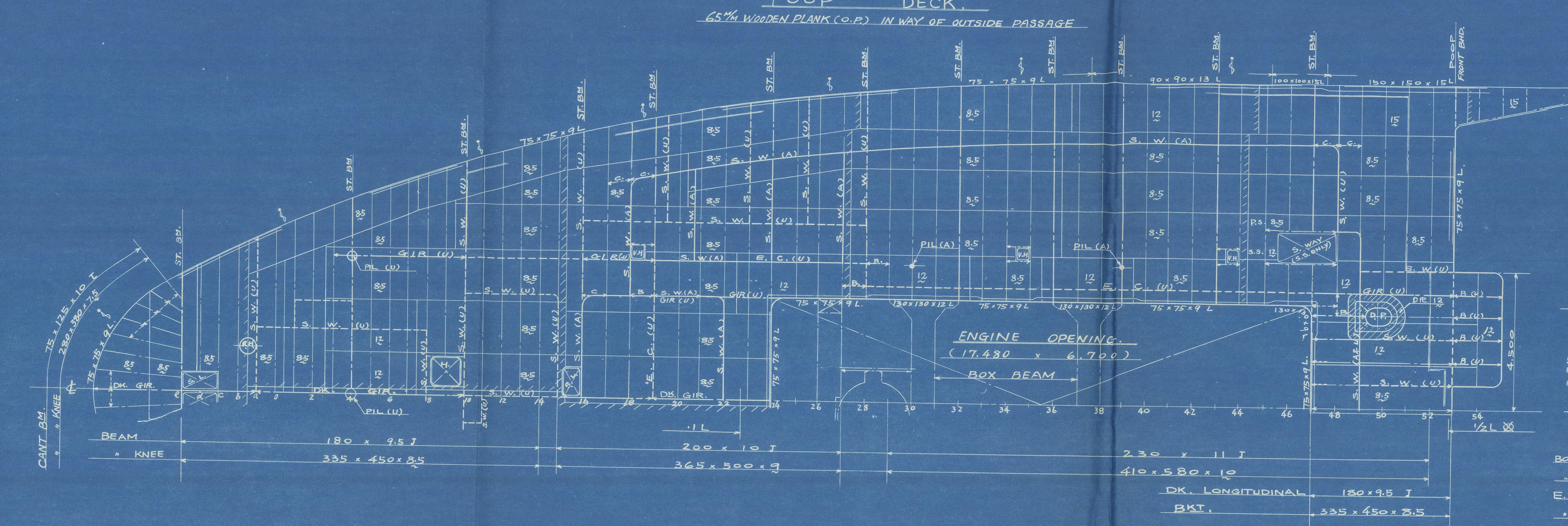
- 1) MARKS MEAN WELDED ERECTION JOINTS.
- 2) ALL BUTTS & SEAMS ARE TO BE WELDED EXCEPT SPECIAL DESCRIPTION.
- 3) O MARKS MEAN THE PILLARS UNDER THE DECK.
- 4) ● MARKS MEAN THE PILLARS ABOVE THE DECK.
- 5) ⊙ MARKS MEAN THE PILLARS ABOVE & UNDER THE DECK.

THE DECK.



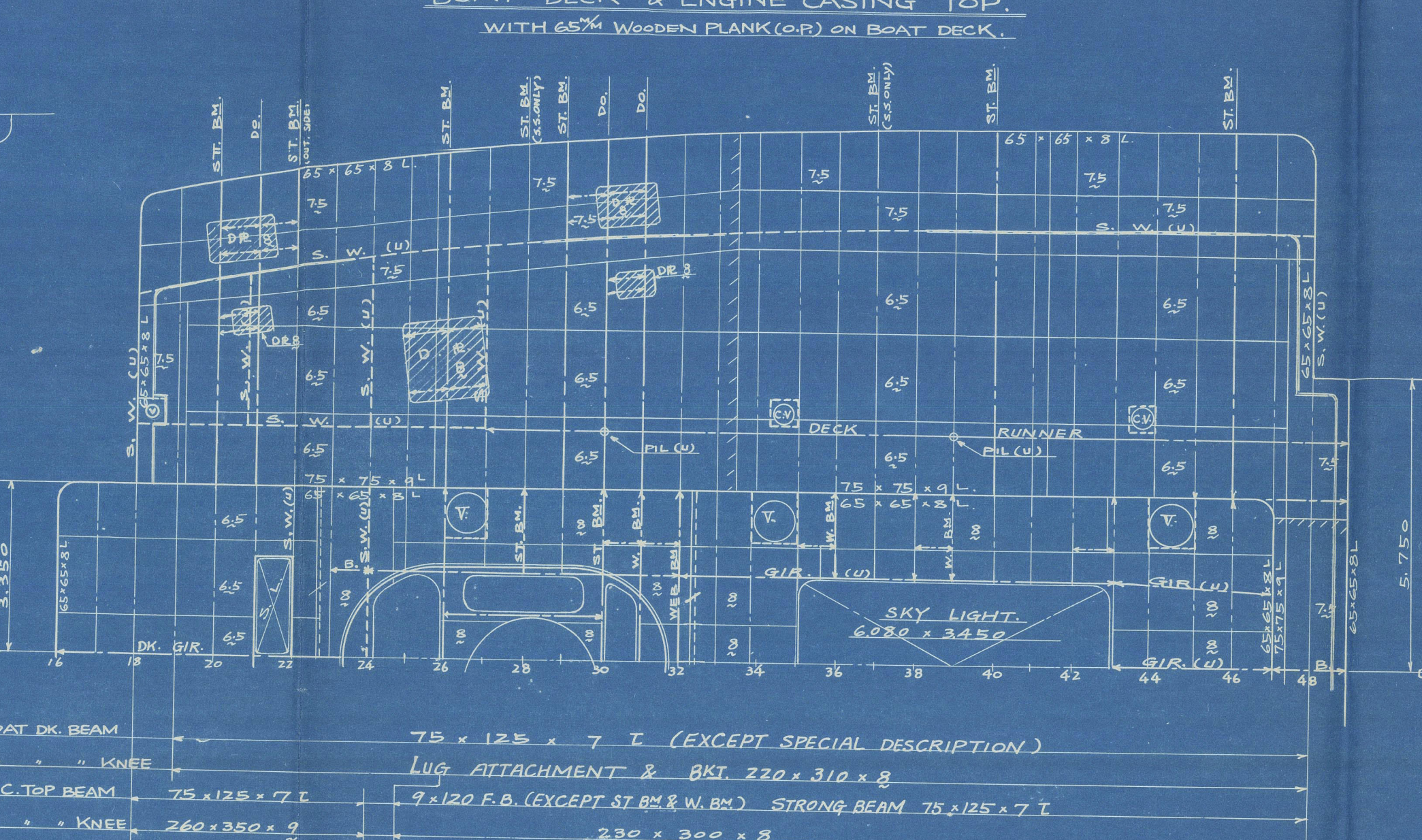
POOP DECK

65% WOODEN PLANK (C.P.) IN WAY OF OUTSIDE PASSAGE

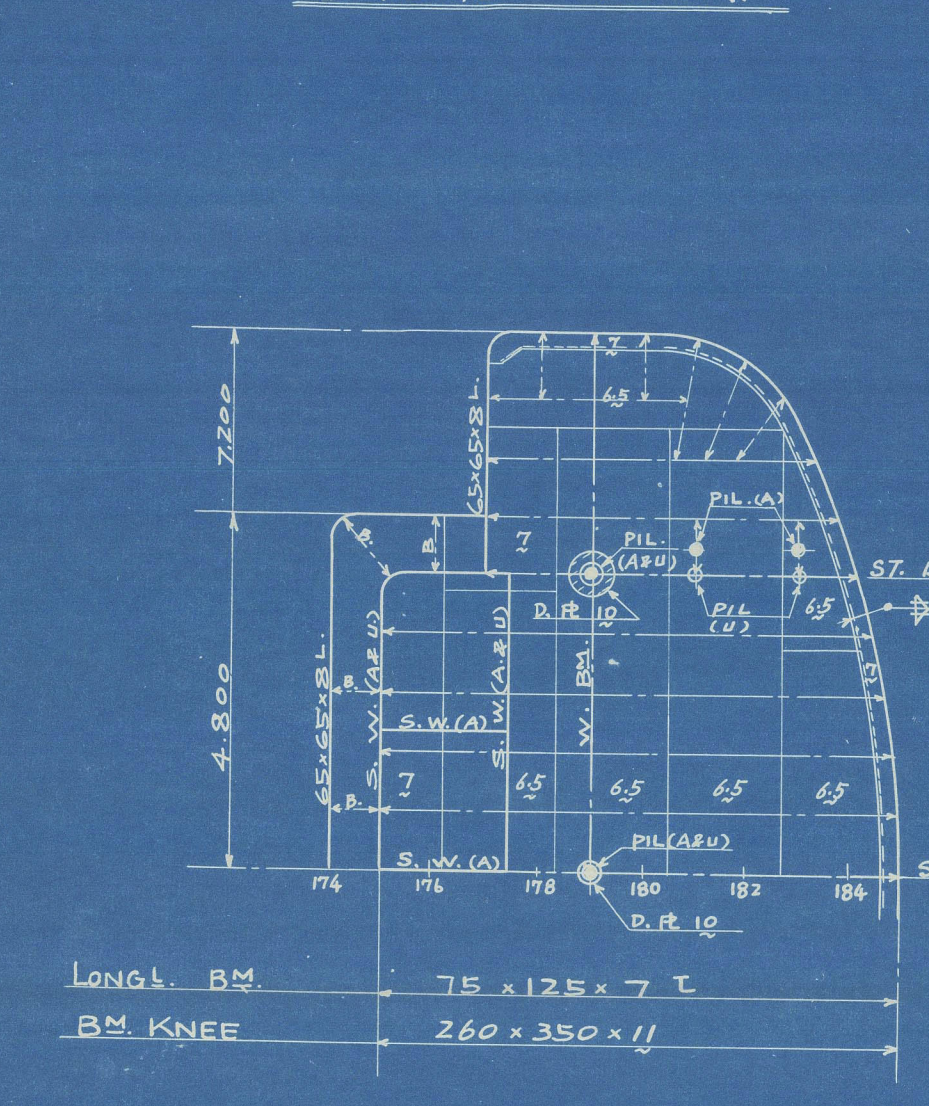


BOAT DECK & ENGINE CASING TOP

WITH 65% WOODEN PLANK (C.P.) ON BOAT DECK

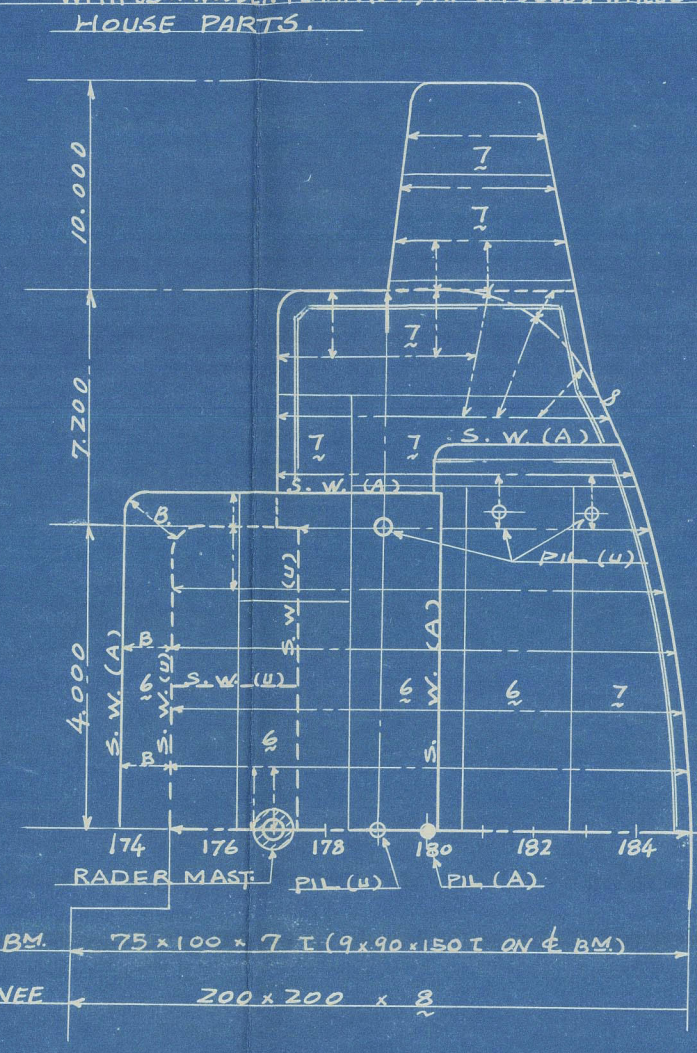


BRIDGE DECK



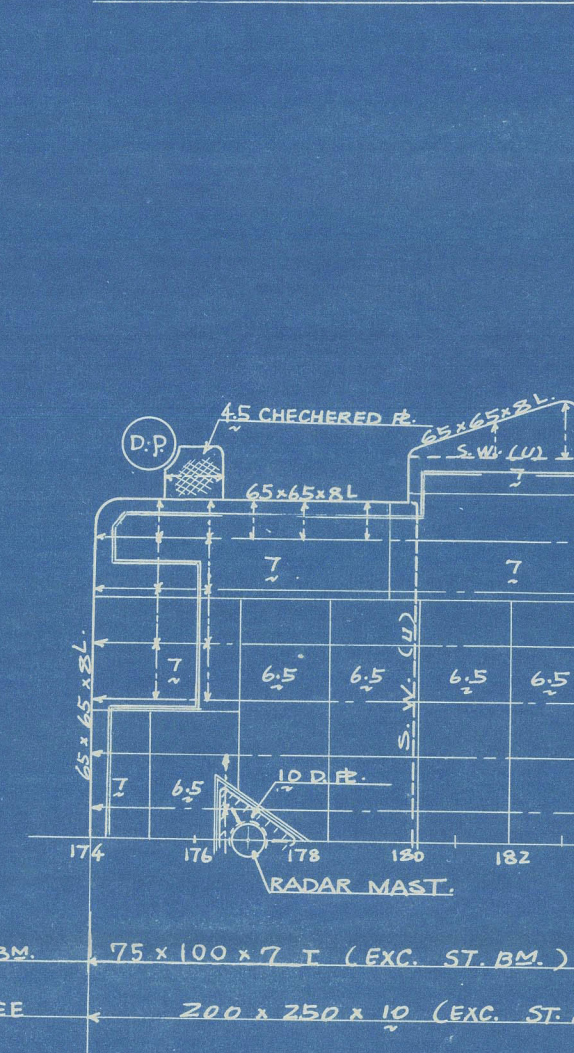
NAVIGATION BRG. DECK

WITH 45% WOODEN PLANK (C.P.) AT EXPOSED CORNERS

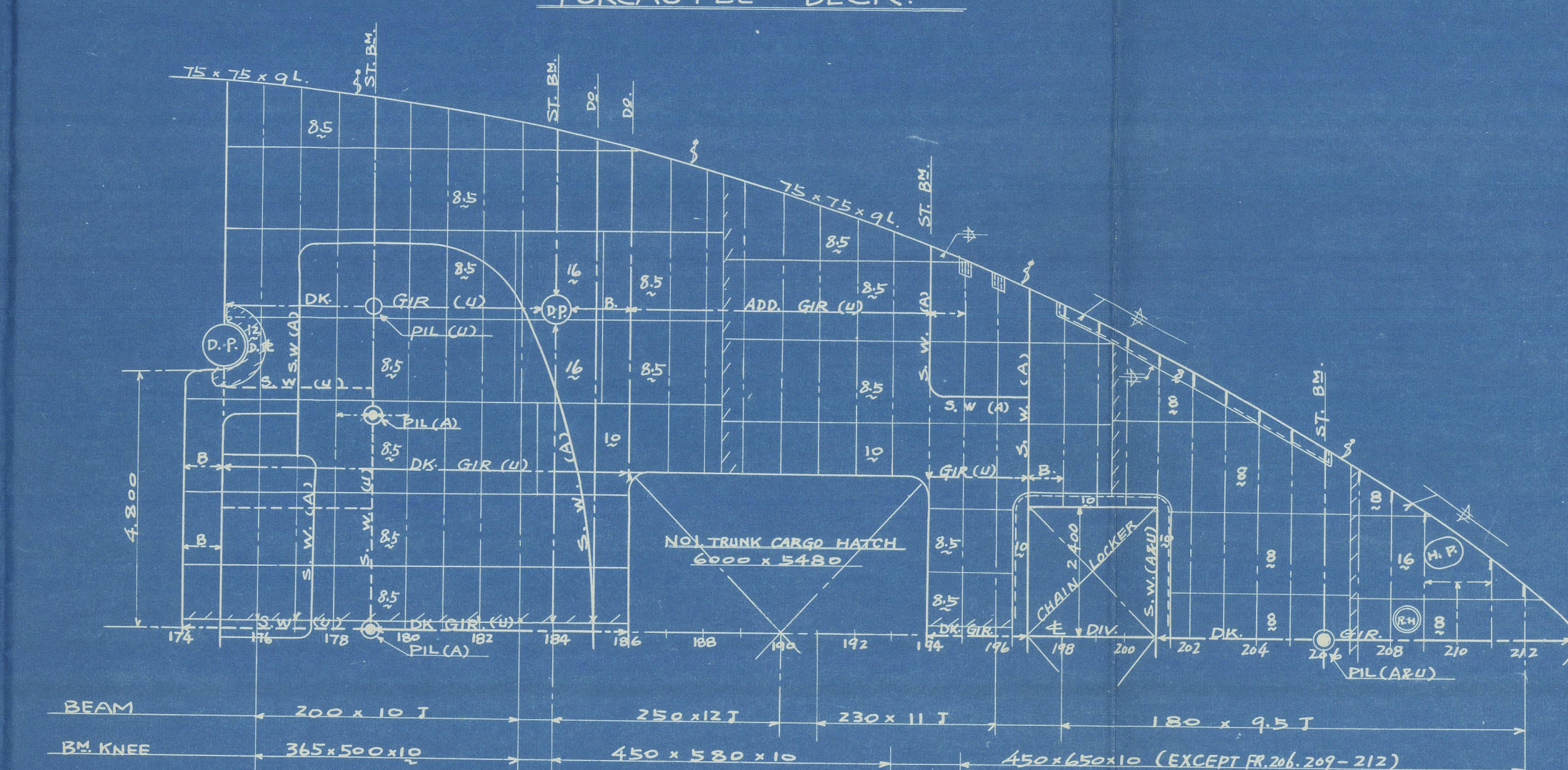


COMPASS BRG. DECK

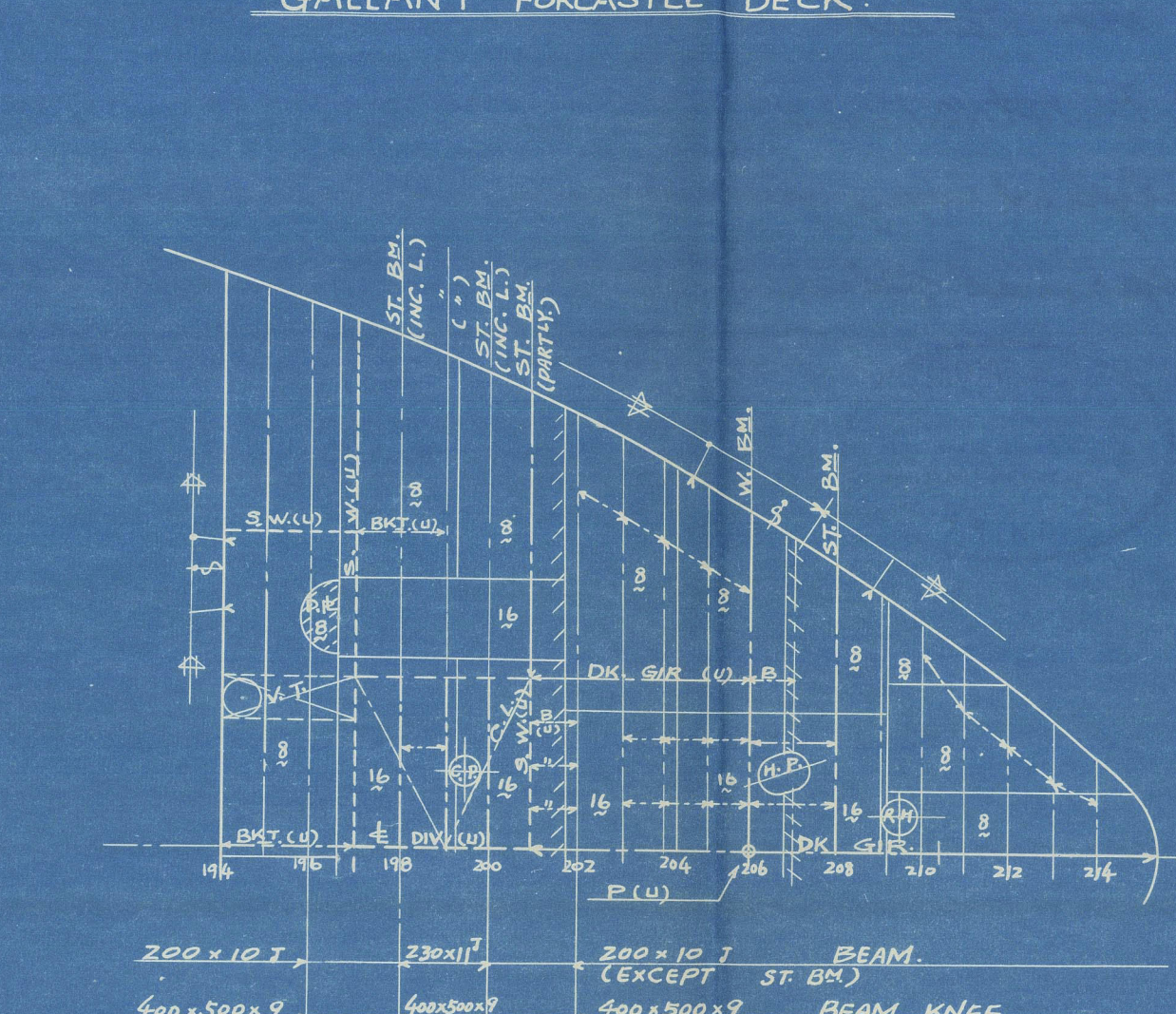
WITH 30% WOODEN PLANK



FORECASTLE DECK



GALLANT FORECASTLE DECK



NISSHUN-MARU

D.W. 15,000 TONS TYPE

DIESEL CARGO BOAT

CONSTRUCTION

PROFILE &

DECK PLAN.

(PART. I.) SCALE 1/100

FINISHED PLAN

NIPPON STEEL TUBE CO. LTD.

SHIMIZU SHIPYARD

DESIGNING SECTION

CHIEF DESIGNER

APPROVED BY

CHECKED BY

DESIGNED BY

DATE OF DRAWN

DATE OF ISSUE

DRAWING NO.

1/100

1/100

1/100

1/100

1/100

1/100

1/100

1/100

FINISHED PLAN

LLOYDS

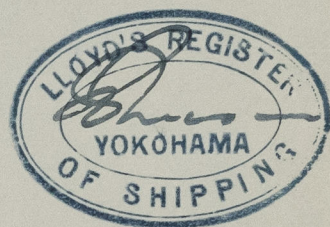


19.0. NISSEHU MARU

As Built

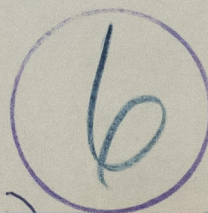
YKA. FE. RPT NO. 1723

Certified Copy of
Approved Plan

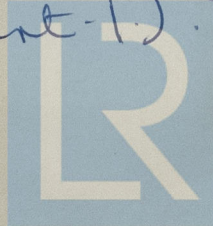


RECORDS DEPT.
LONDON.

Construction
Profile & Deck
Plan (Part-1)



© 2021



Lloyd's Register
Foundation

012610-012612-0065