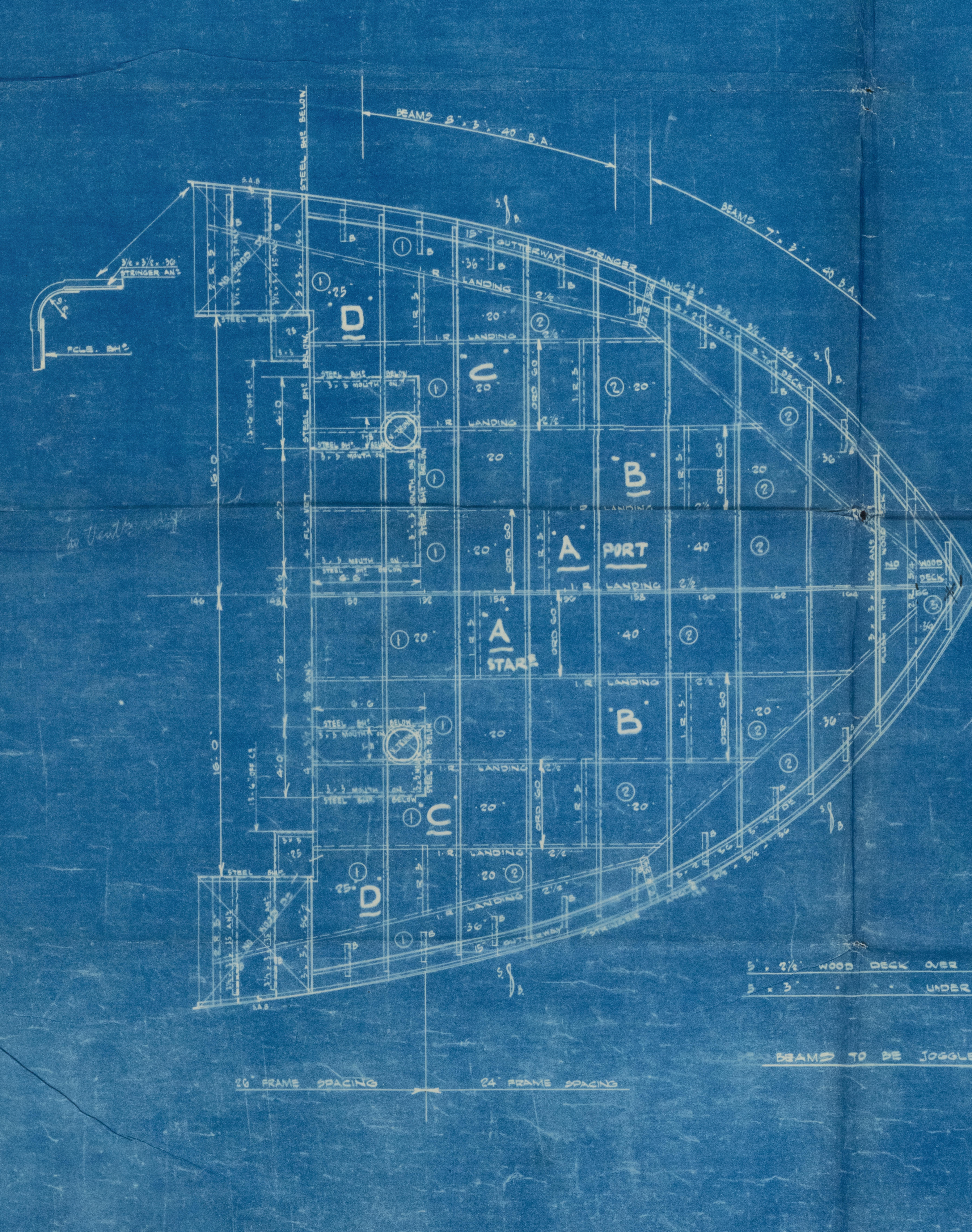
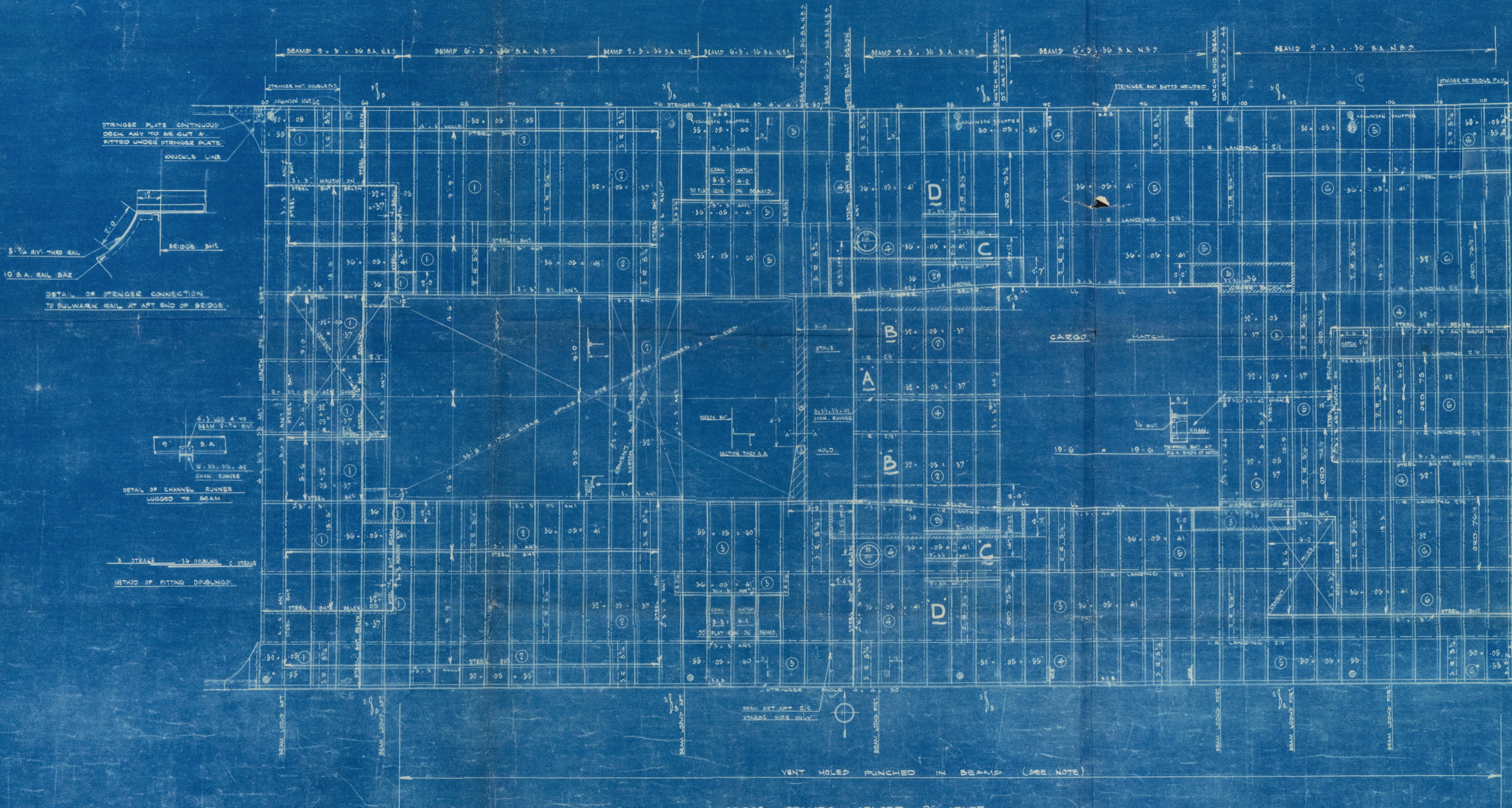
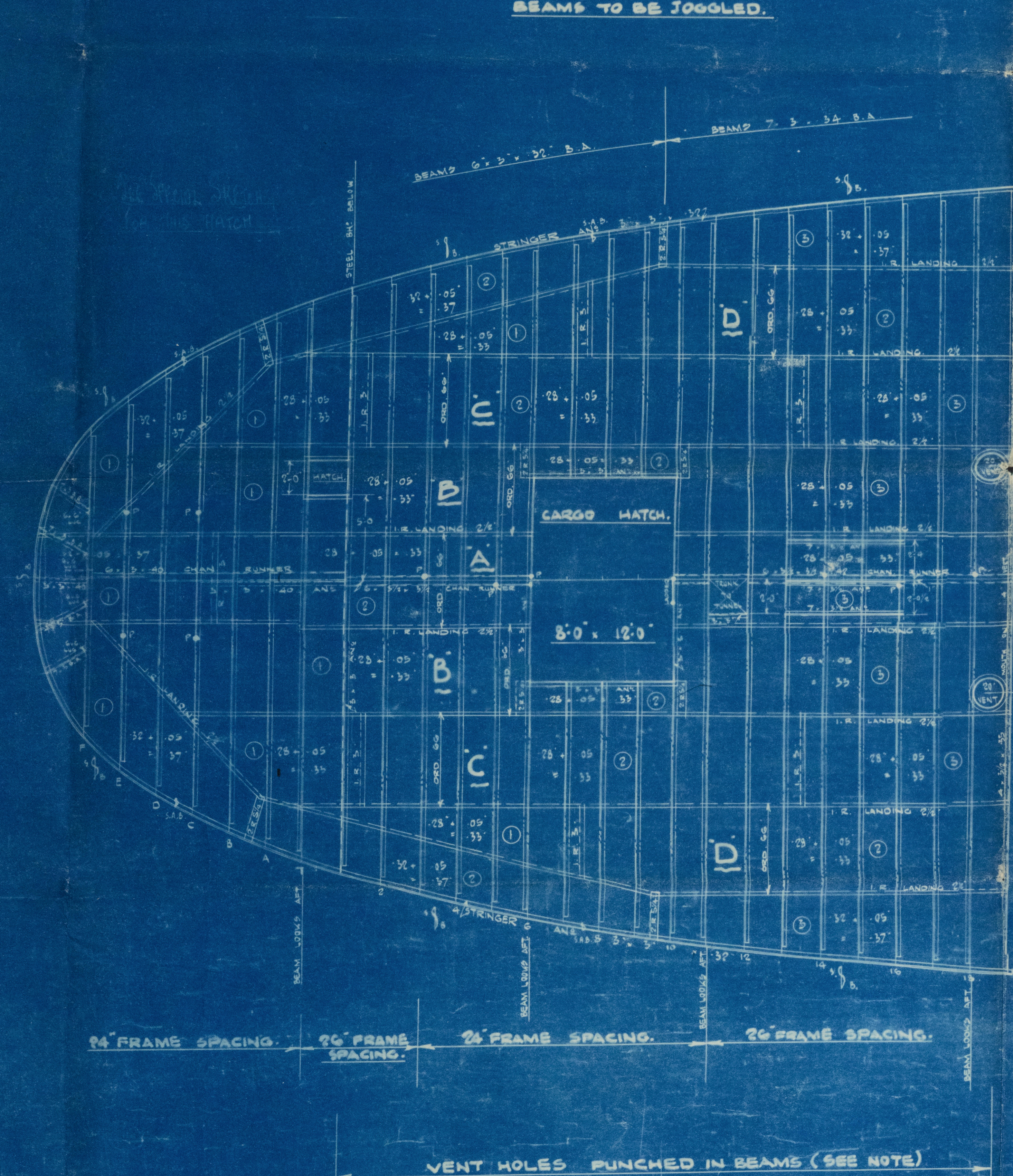


POOP DECK.

BARE STEEL DECK.
BEAMS TO BE JOGGED.



S.S. N° 859.
POOP BRIDGE & F'CLE DECK'S.
SCALE: 1/4" = 1 FT.

2 1/2" SWS IN POOP A BRIDGE DE PLATING TO BEAMS SPACED 5 1/2" APART C1 TO C2	
3/4" SWS	4 1/2"
3/4" LANDING	3 3/4"
3/4" I.E. & 2 E BUTTS	3 3/4"
7/8" SWS	4"
7/8" COUPLING SPACED 4 1/2" DIA IN EDGES & 7-9" DIA IN BODY	
7/8" DECK ANGLES SPACED 3 1/2" APART C2 TO C3	
7/8" 4" x 4" STANCHION ANGLES SPACED 4" APART C1 TO C2	
7/8" 3" x 3" & GUTTER ANGLES SPACED 3 1/2" APART C1 TO C2	

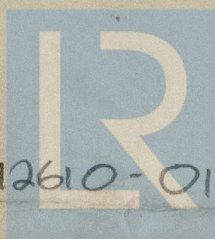
NOTE: VENTILATION HOLES 2" x 1 1/2" SPACED 2' 6" APART PUNCHED IN POOP A BRIDGE DE BEAMS AS NEAR HEEL OF BEAM AS POSSIBLE.

17

Boop, Bridge & Gisle. Decks.
Lithgows Ltd. n^o 859.

per Mr Lyall. 18.11.22.

§/s BARON DOUGLAS



© 2021

Lloyd's Register
Foundation

012610-012612-0004

4 x 3/2 x 35

MOUTH ON

4 x 1/2