

SCALES:- $\frac{1}{4}" = 1$ FOOT
& AS MARKED.

№ 2108 - "PADAPYAN".

SEE ALSO THE FOLLOWING :-

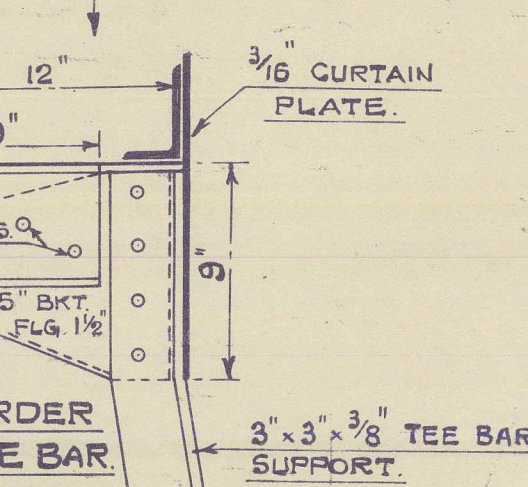
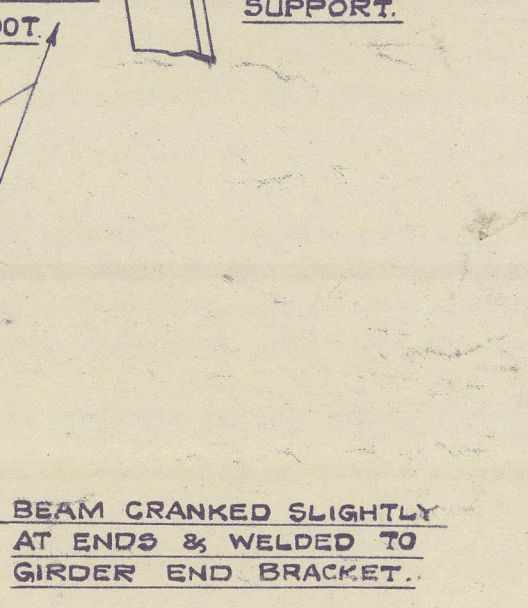
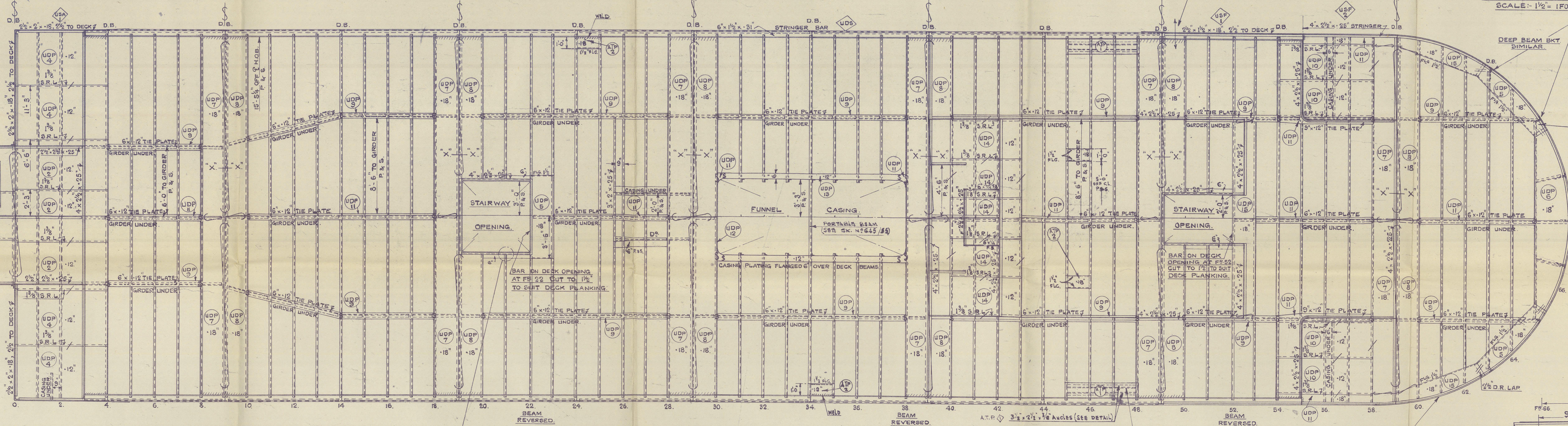
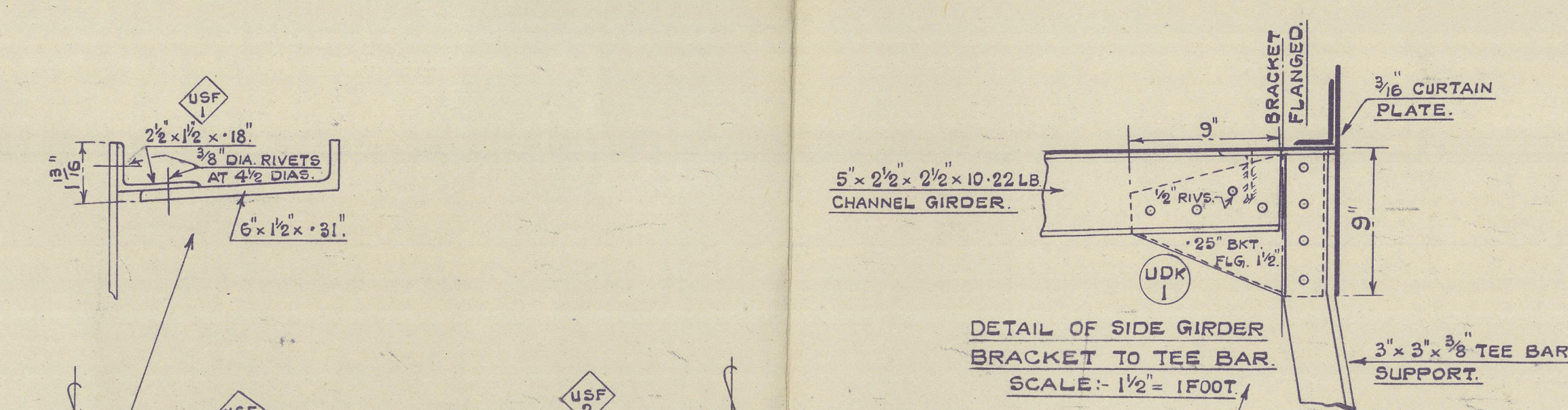
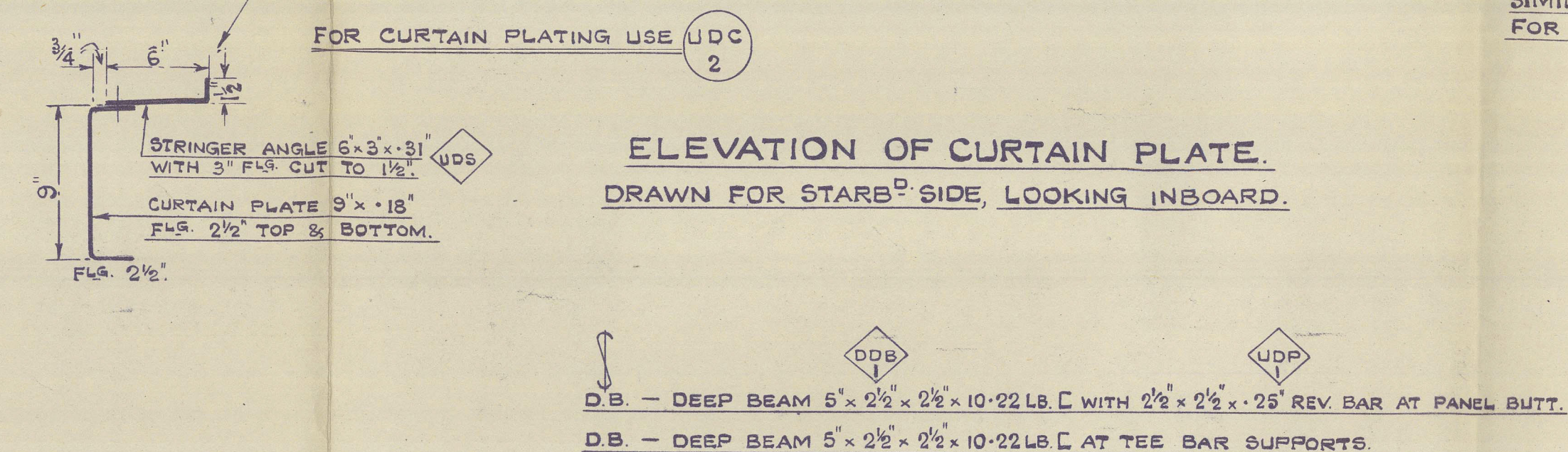
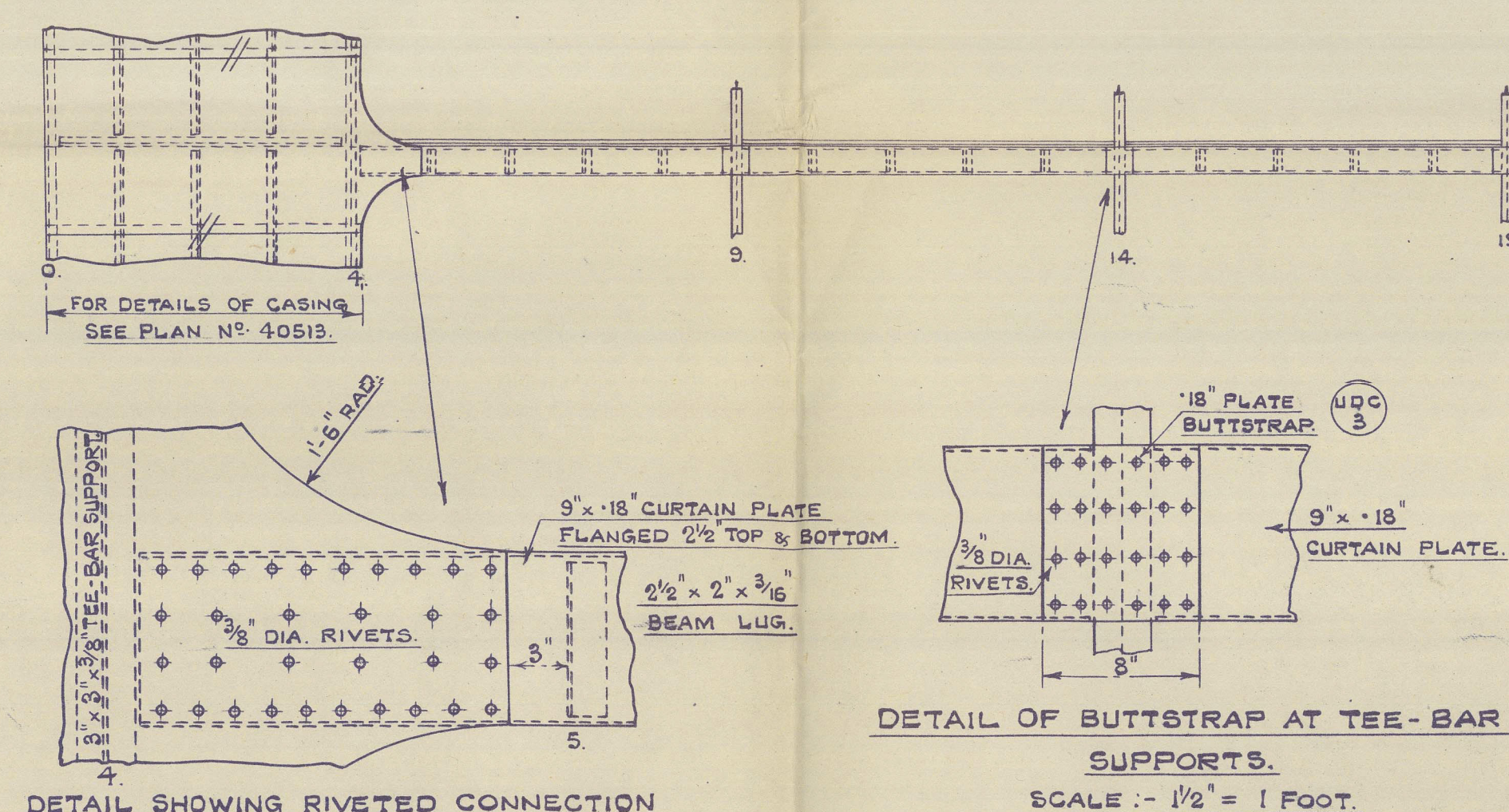
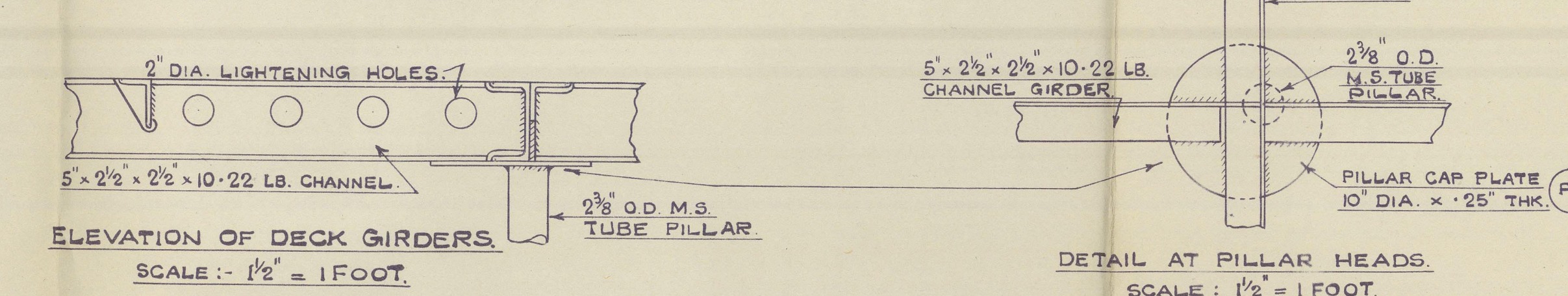
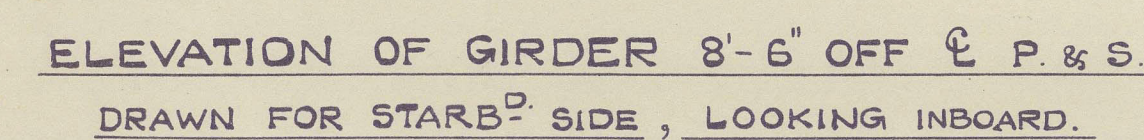
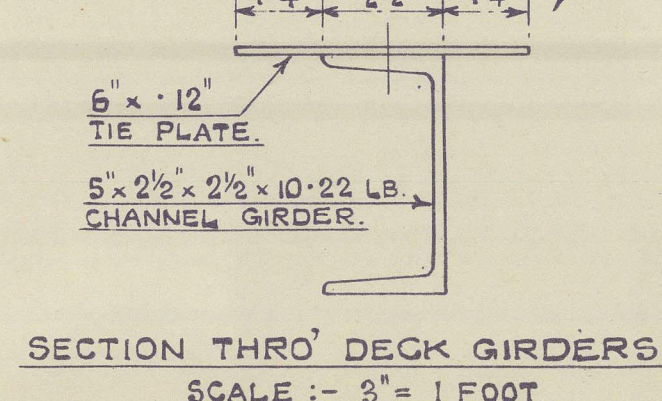
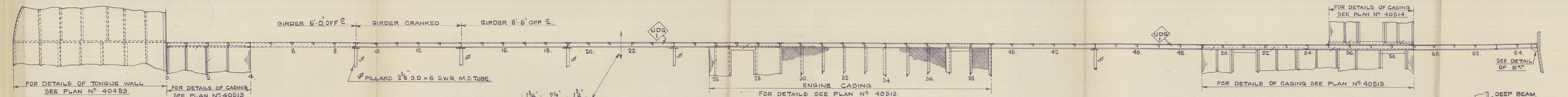
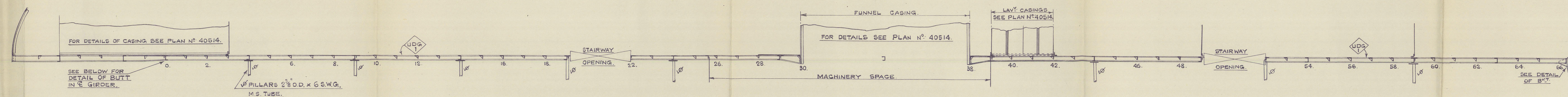
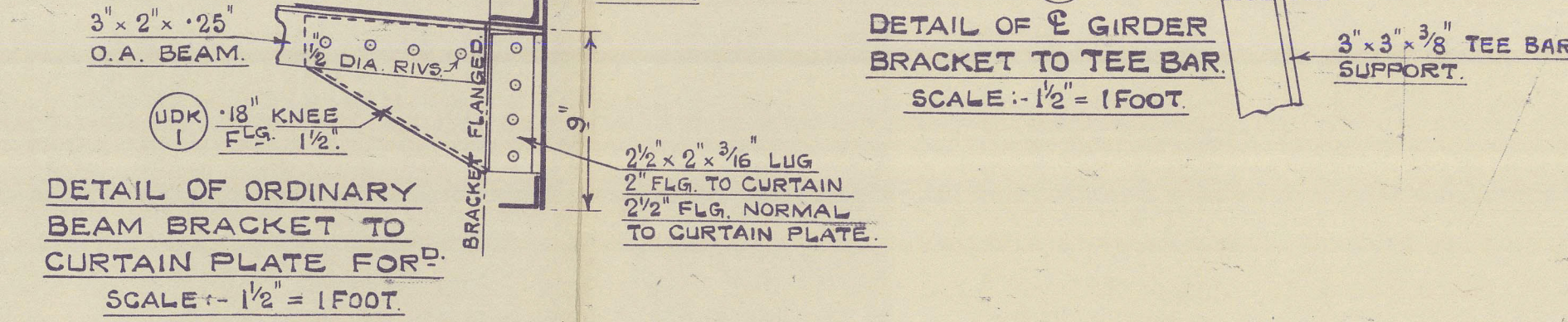
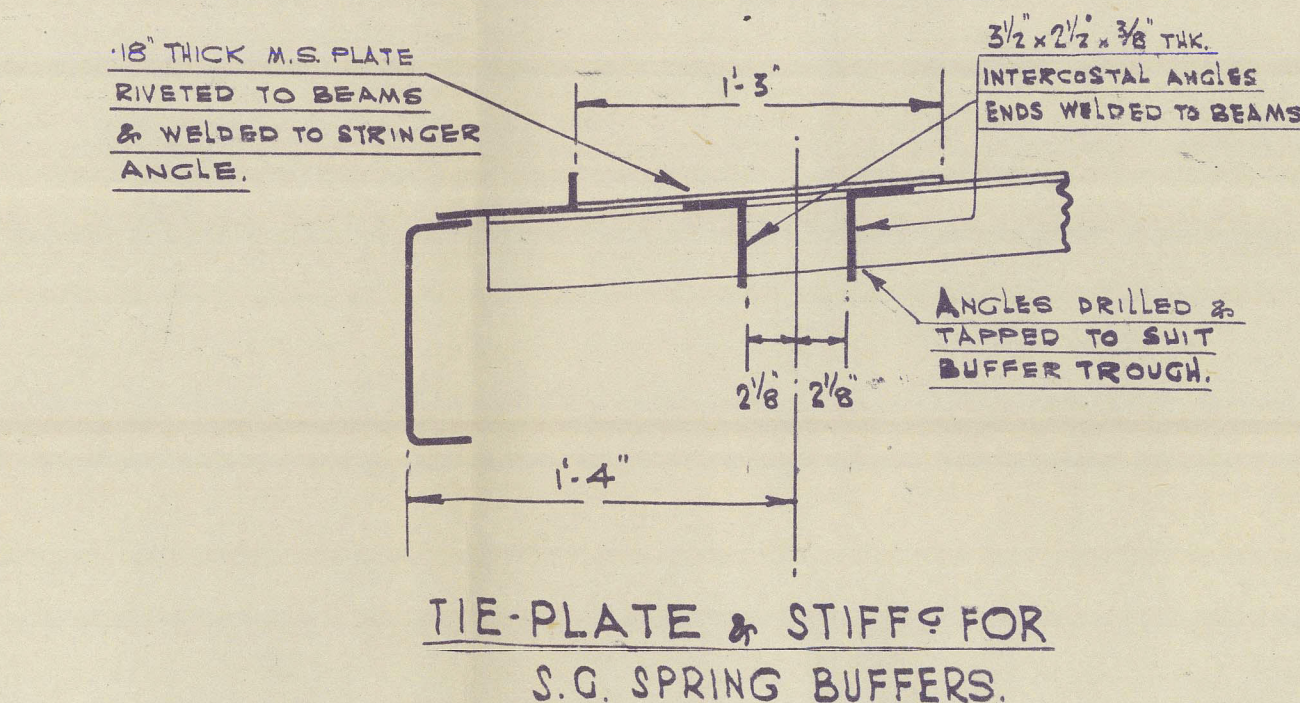
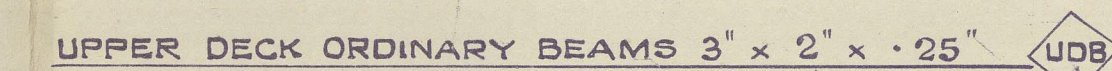
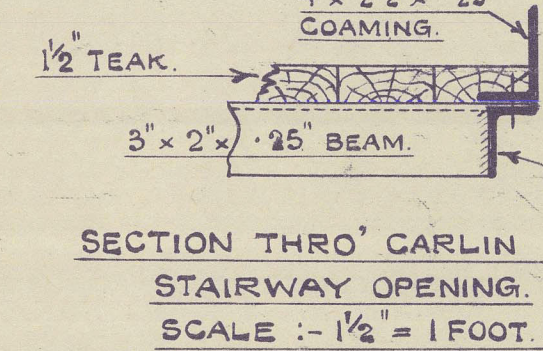
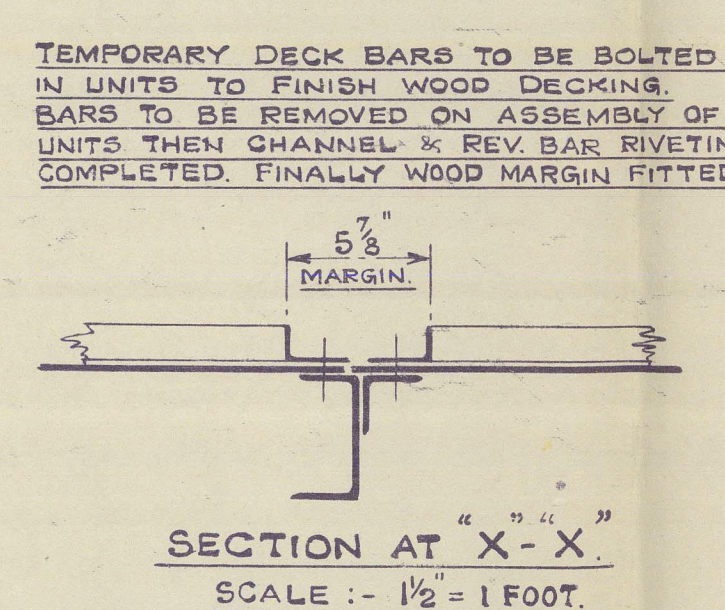
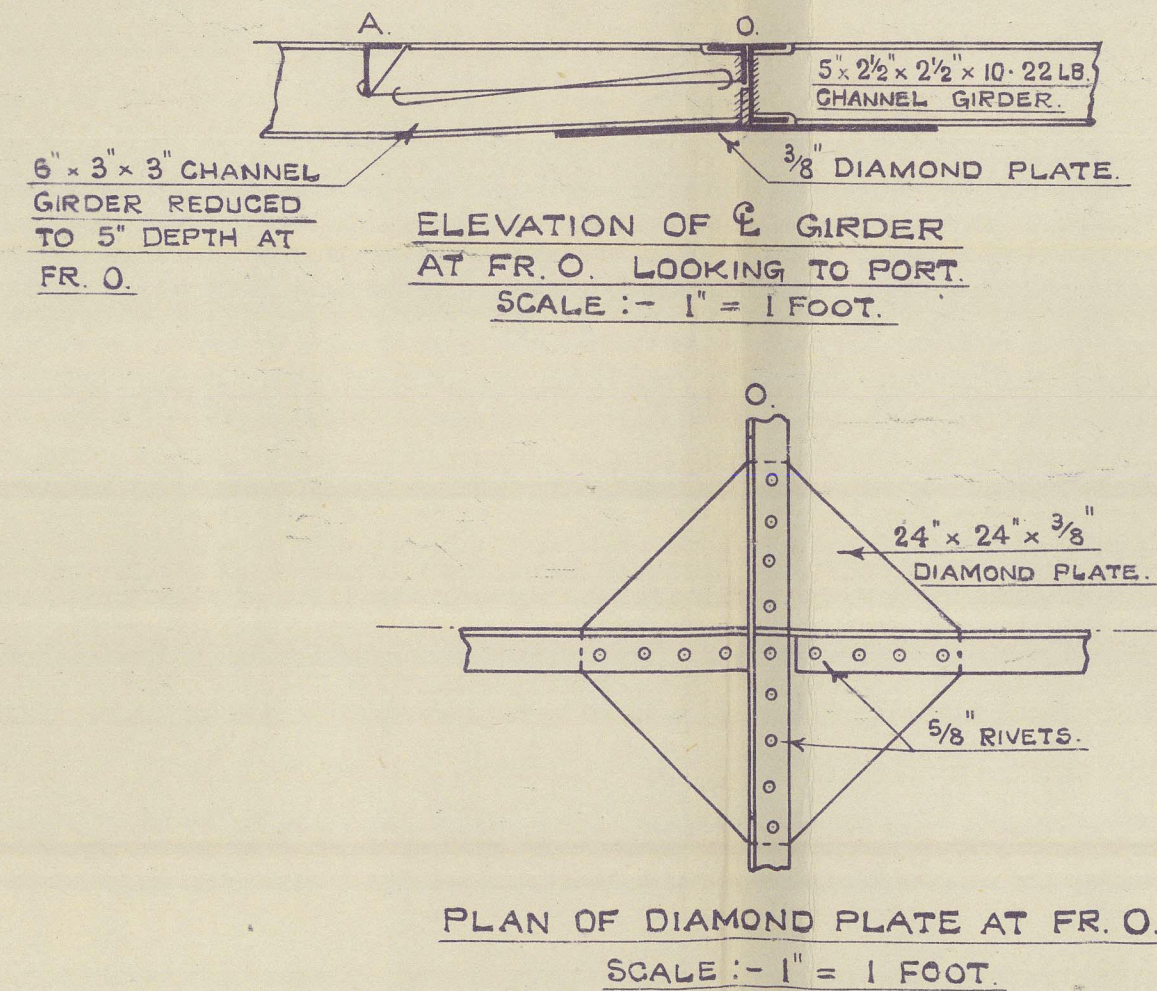
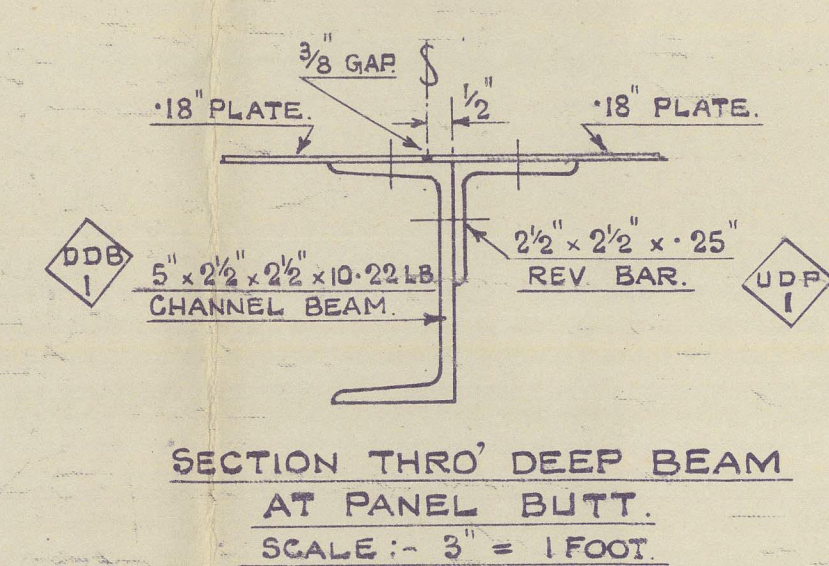
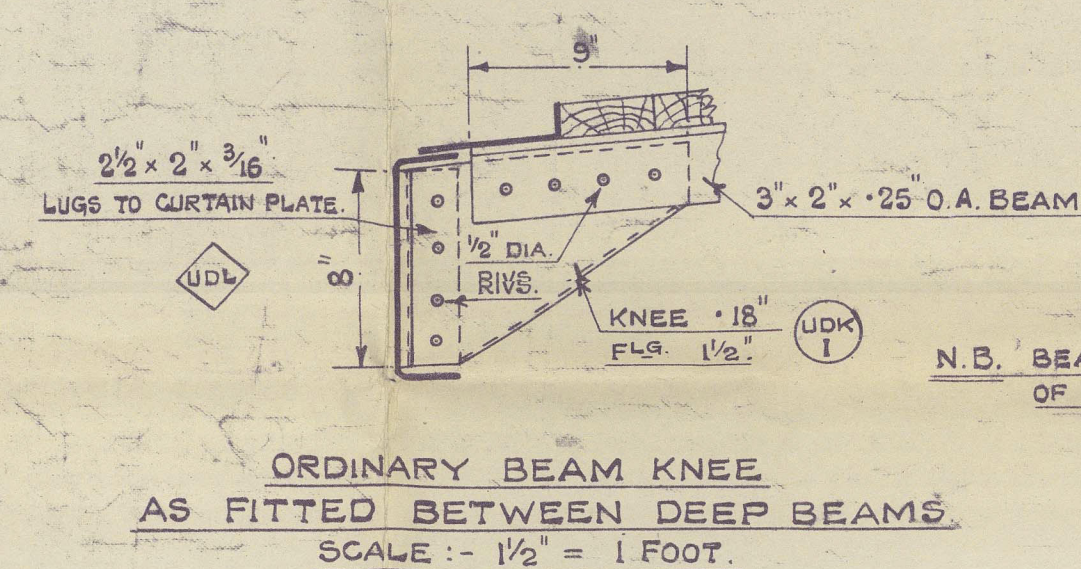
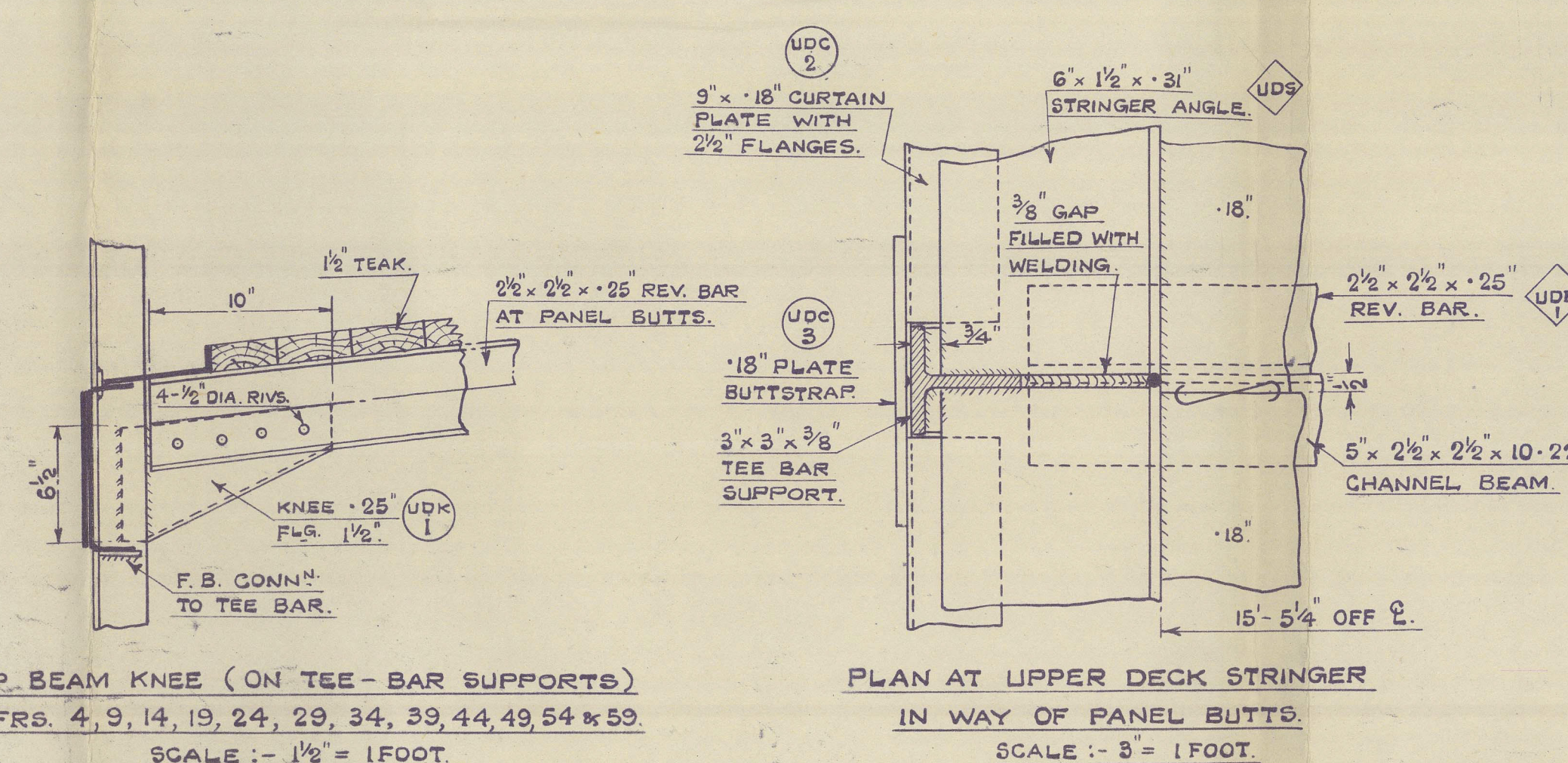
"CASINGS ON UPPER DECK", PLAN N° 40514.
"CASINGS ON MAIN DECK", PLAN N° 40513.
"STERN STRUCTURE & TONGUE", PLAN N° 40489

MATERIAL ORDER :-

MILD STEEL PLATES :- SHEETS NOS. 6, 9 & 17.
" " BARS :- " " 6, 10 & 14

CONNECTION					SCANTLINGS		DIA OF PITCH RIVET IN DIA		HEAD	POINT	STYLE
DECK PLATING TO BEAMS, GIRDERS & DEEP BEAMS					$\frac{1}{8}$ "	$2 \times 8 \times 2 \frac{1}{2}$ " C.B.	$\frac{3}{8}$ "	7	PAN	C'SK	SING
"	"	"	"	"	$\frac{1}{8}$ "	$2 \times 12 \times 2 \frac{1}{2}$ " C.B.	$\frac{3}{8}$ "	7	"	"	"
"	"	"	"	"	$\frac{1}{8}$ "	$2 \times 6 \times 2 \frac{1}{2}$ " C.B.	$\frac{3}{8}$ "	5	"	"	"
DEEP BEAM TO REV BAR AT PANEL BUTTS					$\frac{1}{8}$ "	$2 \times 12 \times 2 \frac{1}{2}$ " C.B.	$\frac{3}{8}$ "	7	"	HANDSEED	"
SPRINGER ANGLE TO CURTAIN PLATE					$\frac{1}{8}$ "	$2 \times 6 \times 2 \frac{1}{2}$ " C.B.	$\frac{3}{8}$ "	4 $\frac{1}{2}$	"	C'SK	"
"	ANGLE TO DECK PLATING.				$\frac{1}{8}$ "	$2 \times 6 \times 2 \frac{1}{2}$ " C.B.	$\frac{3}{8}$ "	4 $\frac{1}{2}$	"	"	"
CASING GROUND BARS TO DECK PLATING					$\frac{1}{8}$ "	$2 \times 6 \times 2 \frac{1}{2}$ " C.B.	$\frac{3}{8}$ "	5	"	"	"
BEAM KNEES CONNECTIONS, BRACKETS, ETC.					$\frac{1}{8}$ "	$2 \times 12 \times 2 \frac{1}{2}$ " C.B.	$\frac{3}{8}$ "	8	"	"	"

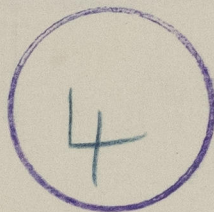
SEE DETAILS.



PADAPYAN



RECORDS DEPT.,
LONDON.



Upper Deck Plating



© 2021

Lloyd's Register

012598-012605-0005