

9 APR 1919

DIMENSIONS

LENGTH B.P.	411'-6"
BREADTH	55'-0"
DEPTH MHD TO UPPER DS	24'-6"
" " SHELTER DS	36'-4"
FORECASTLE	4'-6"



S.S. No 195

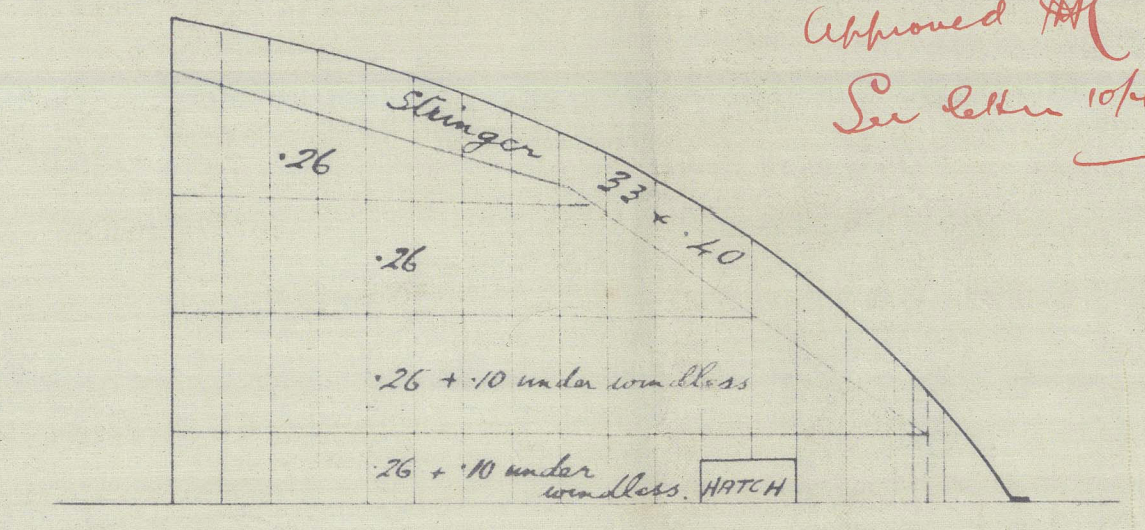
LONGITUDINAL SECTION

SCALE 1/8" = 1 FT.

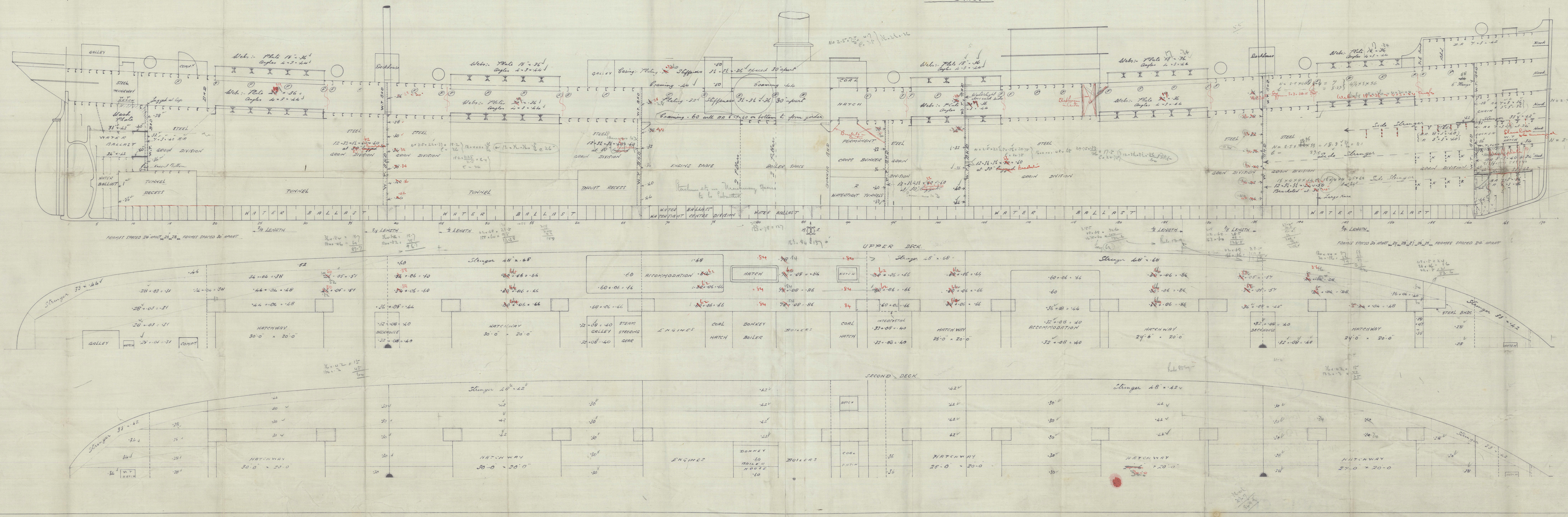
TO CLASS AT BRITISH CORPORATION, B.S. *

- 27' 4" DRAUGHT -

Note: Owners increases have been added as follows:-
Upper deck steel & iron thickness when exposed
Upper deck plating between hatches increased to 1/2".



FORECASTLE DECK



Craig Taylor & Co.

195.

Long & Id.

Bag

RETAIN

2.

Craig Taylor & Coy.

195

$54' 8''$
 $411' 6'' \times 55' 0'' \times \frac{27' 6''}{36' 43''}$

PROFILE Y DECKS

App'd 10 4 19.

SS PARIS CITY

TC 28-5-19

012553-012563-0134