

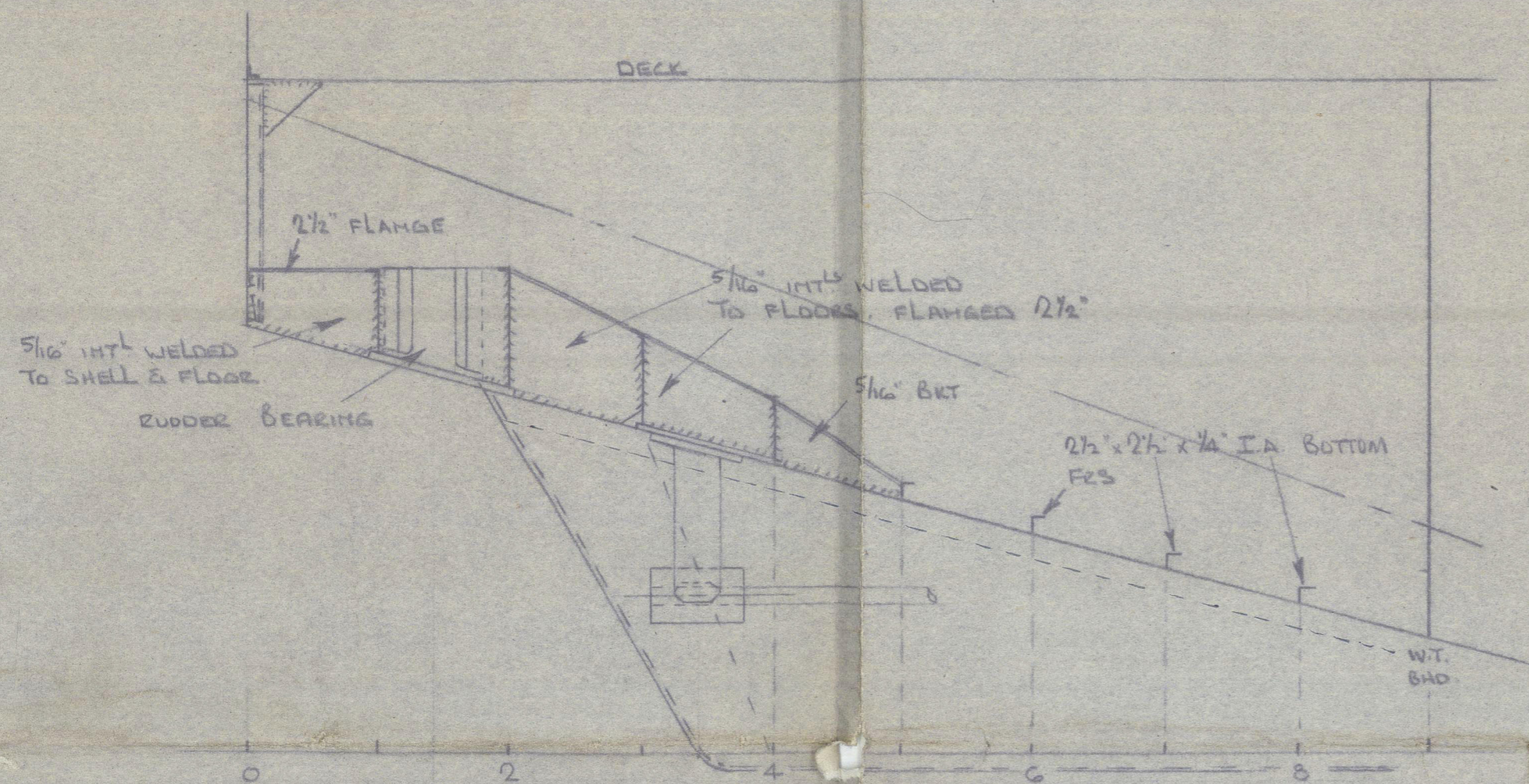


SHIP Nos. 206/7/9

# STRENGTHENING OF STERN

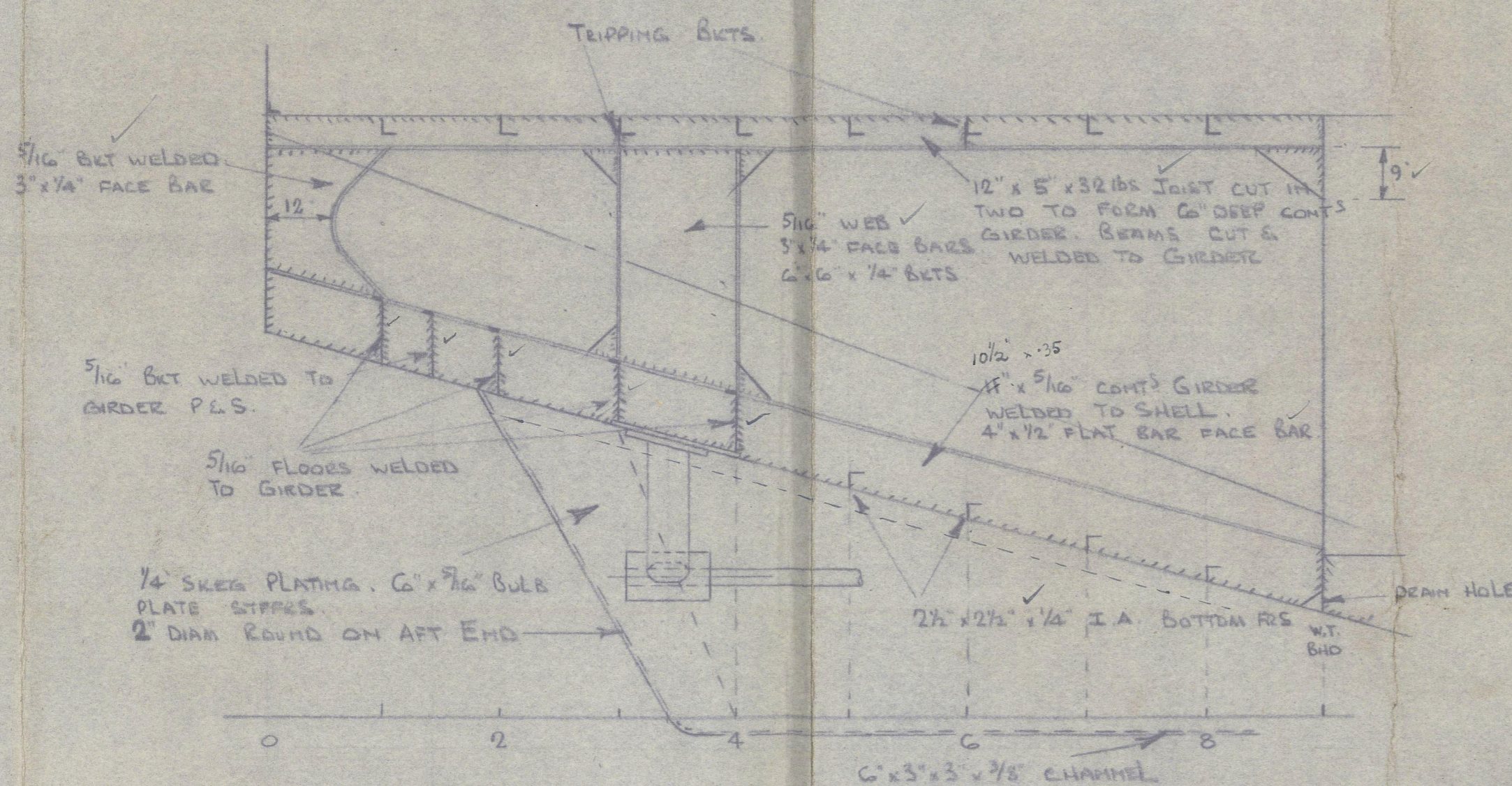
SCALE:-  $\frac{1}{2}$ " = 1 FOOT

FRAMES SPACED 21" THROUGHOUT

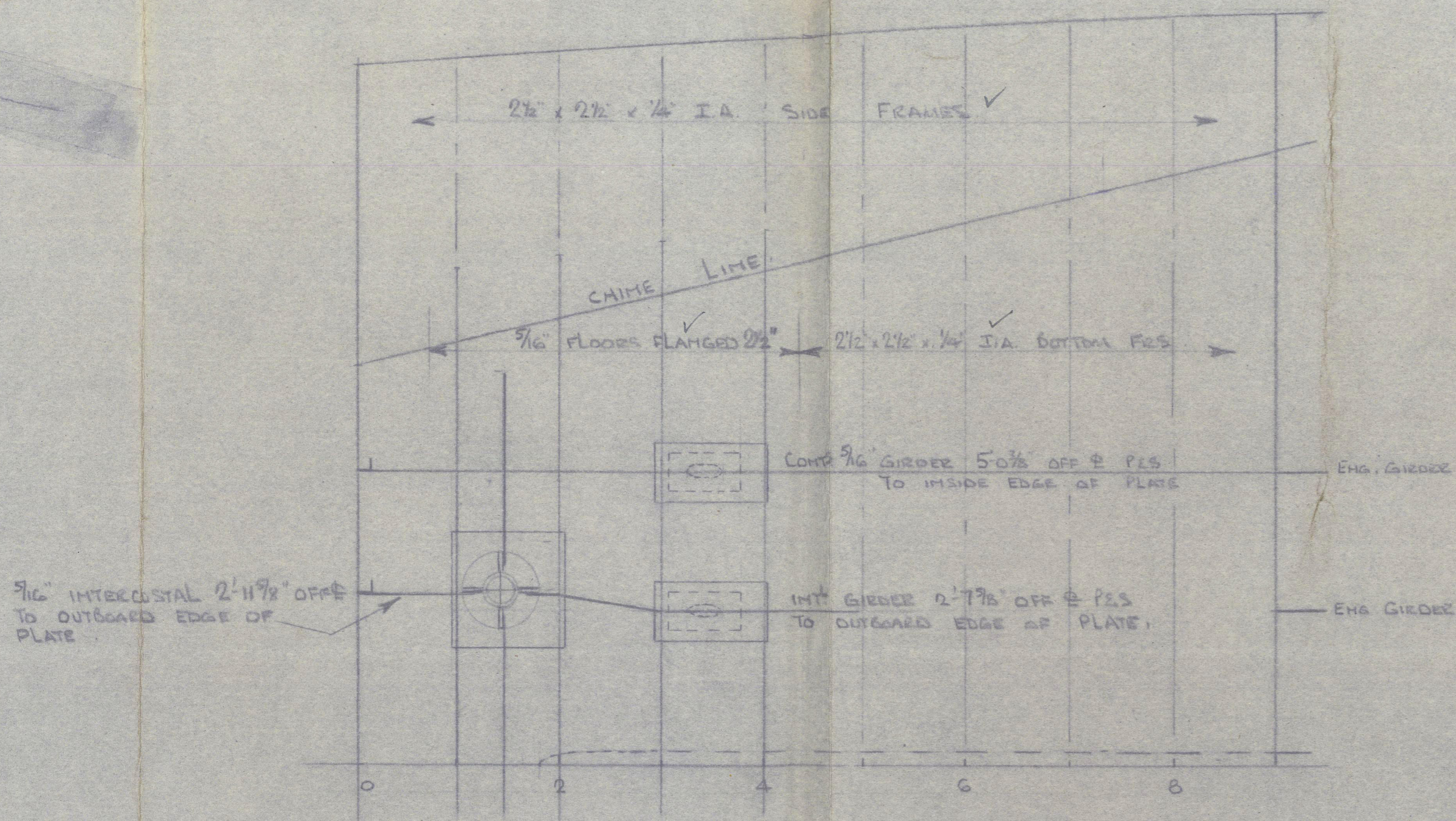


ELEVATION OF GIRDER 2-7 3/8" OFF  $\Phi$   
(CRANKED TO 2-11 3/8" OFF  $\Phi$ )

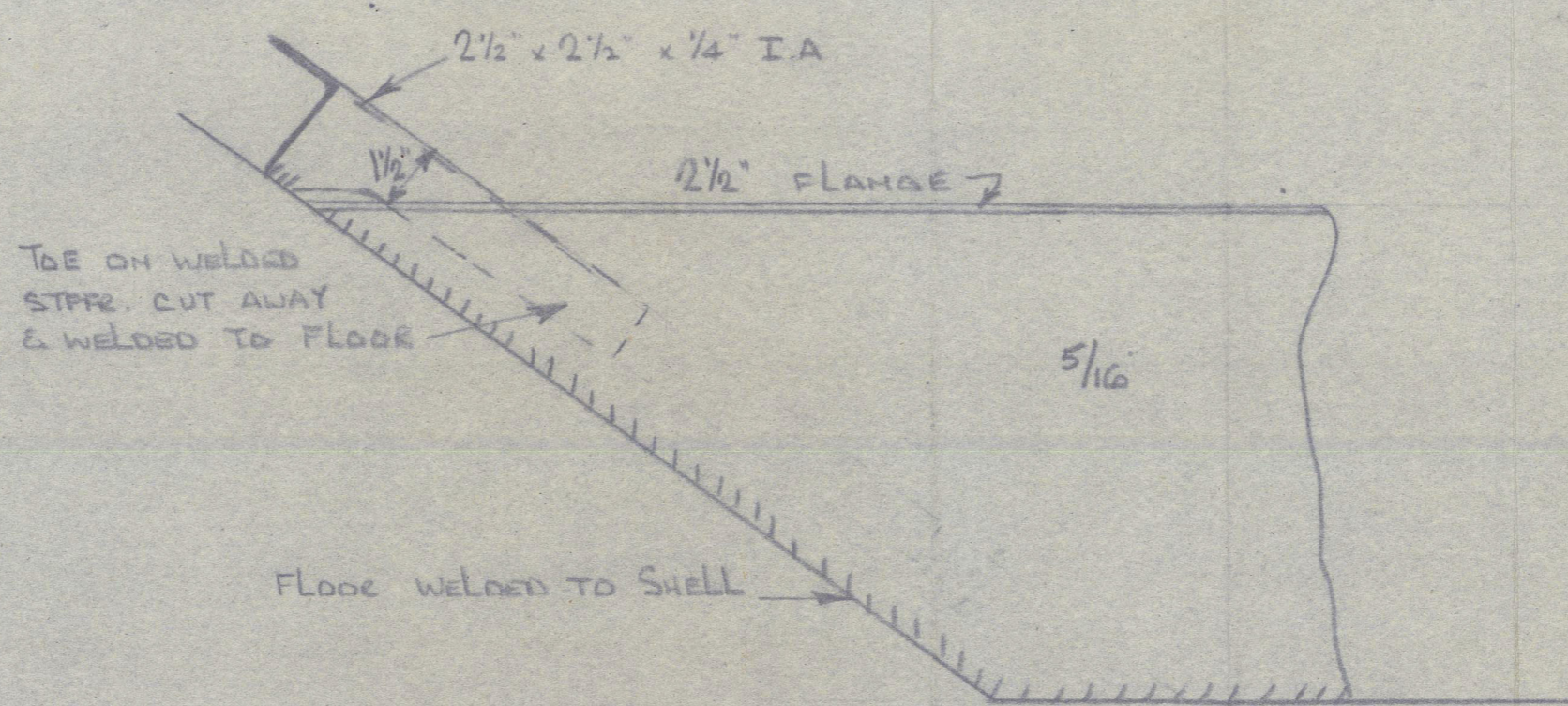
LOOKING FROM  $\Phi$  TO PORT  
PORT SIDE SHOWN. STARBOARD SIDE SIMILAR



ELEVATION OF GIRDER 5-0 3/8" OFF  $\Phi$   
LOOKING FROM  $\Phi$  TO PORT  
PORT SIDE SHOWN. STARBOARD SIDE SIMILAR



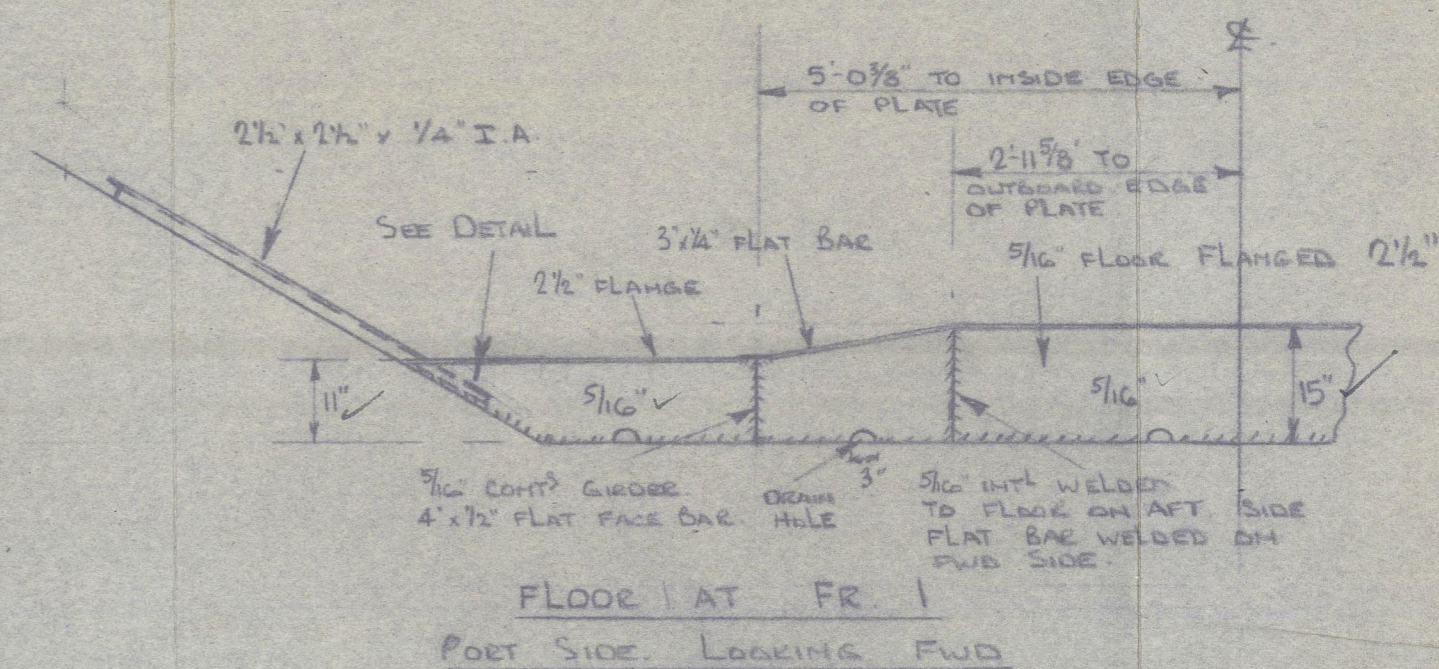
PLAN VIEW OF SHELL  
SHOWING ARR. OF FLOORS & GIRDERS.



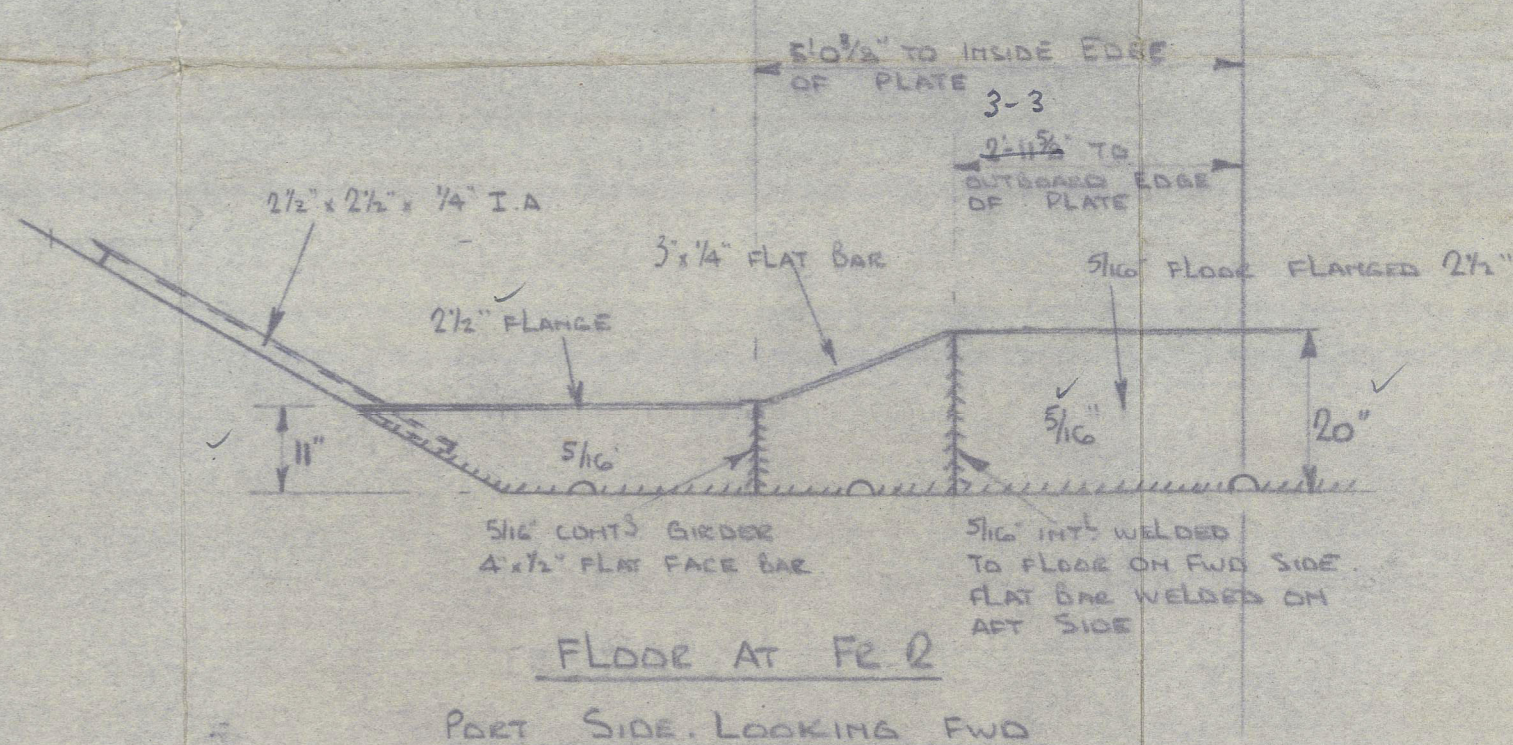
DETAIL OF FR. IN WAY OF FLOORS

SCALE:- 3" = 1 FOOT

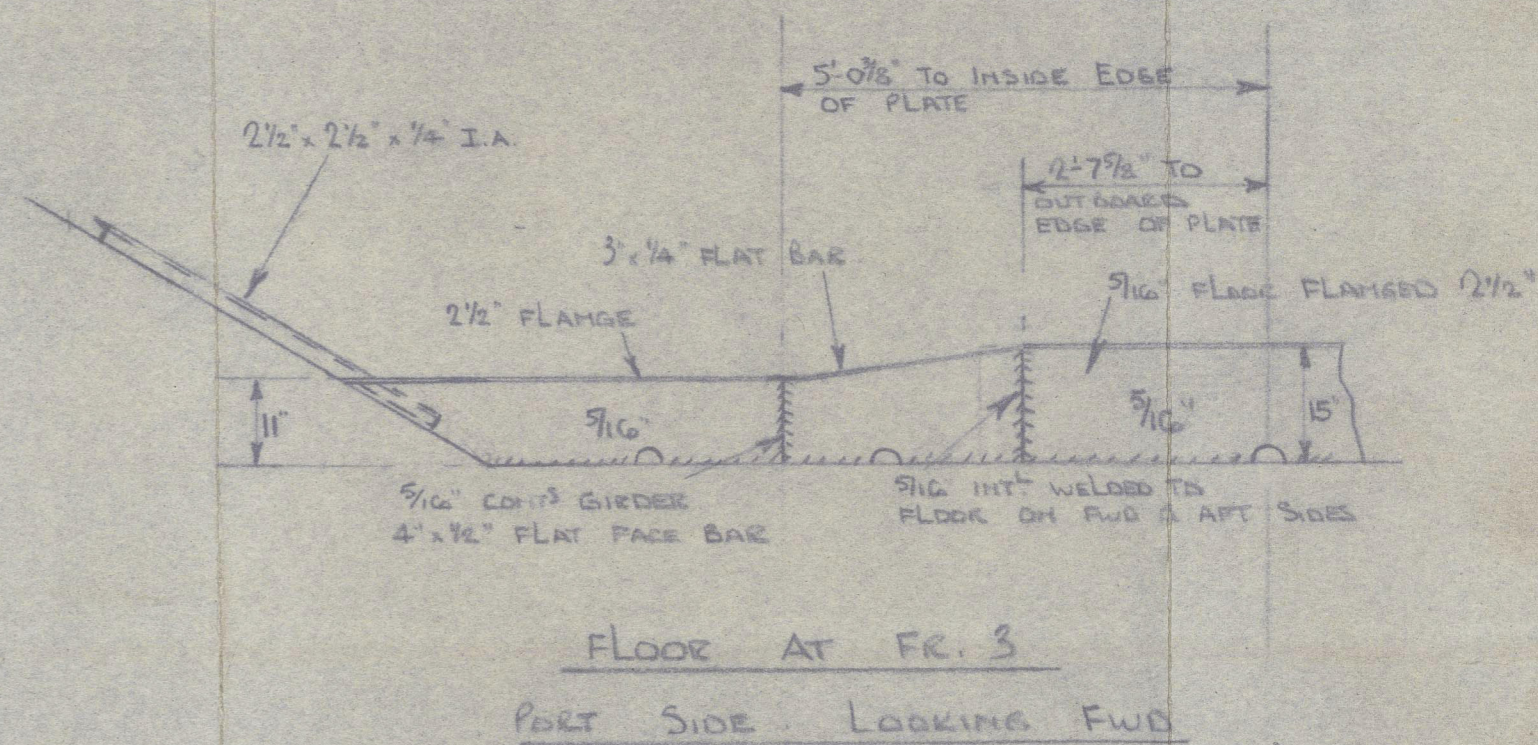
3" DIAM DEATH HOLES WHERE PRACTICABLE



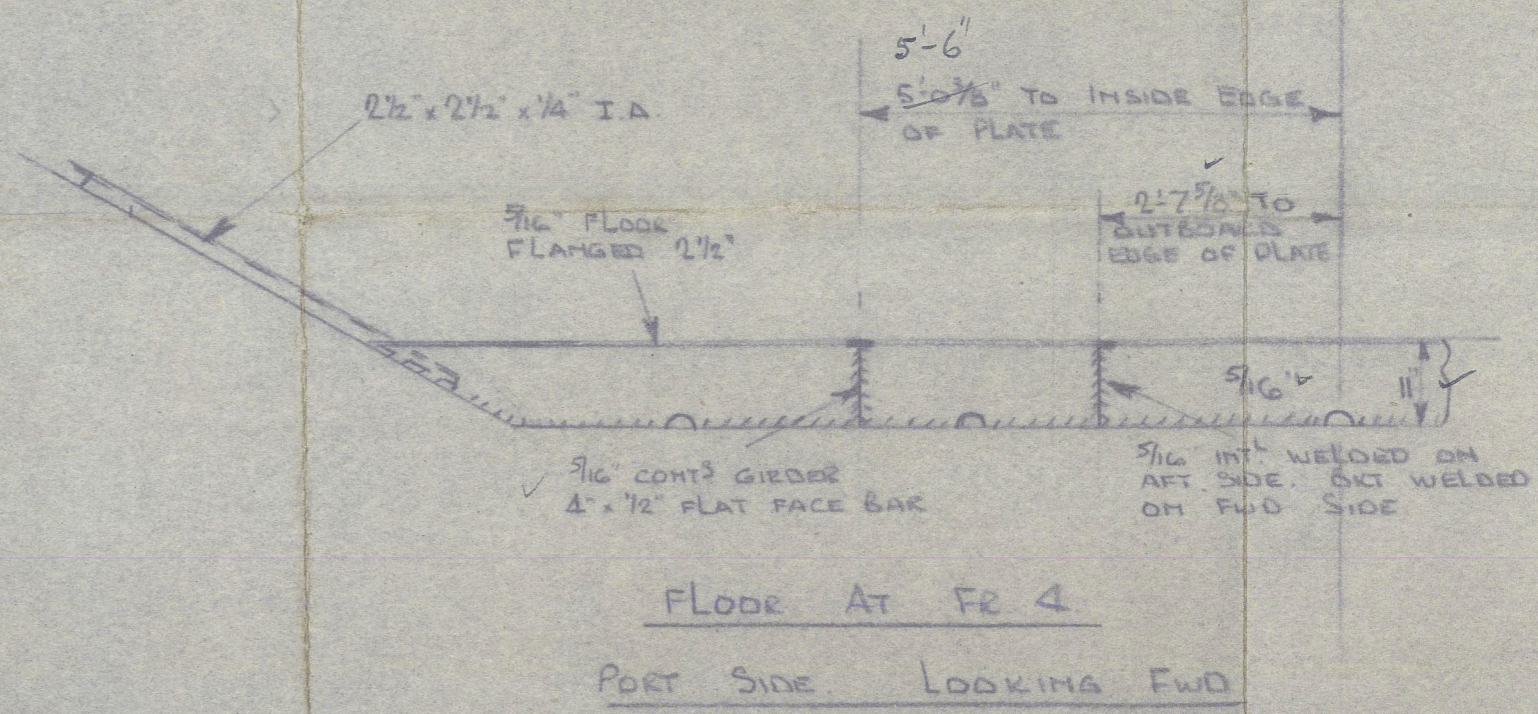
FLOOR AT FR. 1  
PORT SIDE. LOOKING FWD



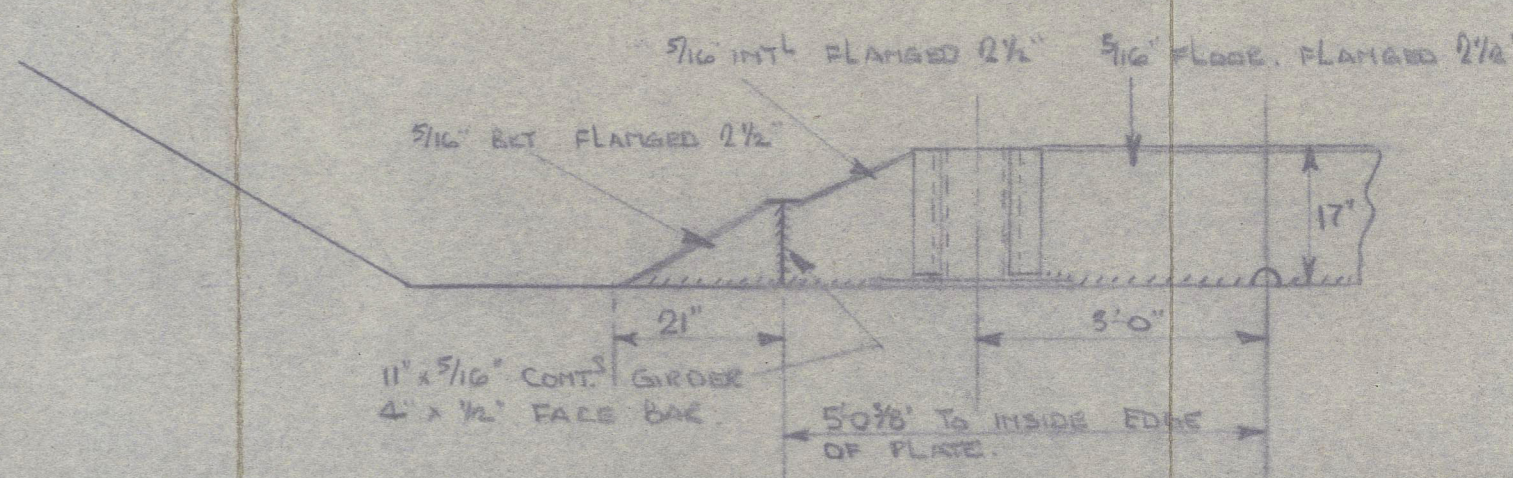
FLOOR AT FR. 2  
PORT SIDE. LOOKING FWD



FLOOR AT FR. 3  
PORT SIDE. LOOKING FWD



FLOOR AT FR. 4  
PORT SIDE. LOOKING FWD



DETAIL OF BUTS TO RUDDER BEARING  
PORT SIDE. LOOKING FWD

WALLSEND-ON-TIME  
17.11.54

012553-012563-0105

4  
Nº 206-7-9

STRENGTHENING OF STERN

CLELANDS (SUCCESSORS) LTD.

'GIMADA'

Newcastle upon Tyne

Report No. 112732

YARD no. 206



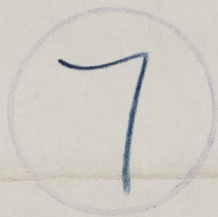
'GEBOSO'

Newcastle upon Tyne

Report No. 112733

YARD no. 207

RECORDS DEPT.  
LONDON.



© 2021

Lloyd's Register  
Foundation

012553-012563-0105