

19 NOV 1954

SHIP NOS. 206/7/9

MIDSHIP SECTION.

SCALE:- 1" = 1 FOOT & AS SHOWN

DIMENSIONS:- 102'3" B.P. x 26'0" MLO x 6'0" MLO

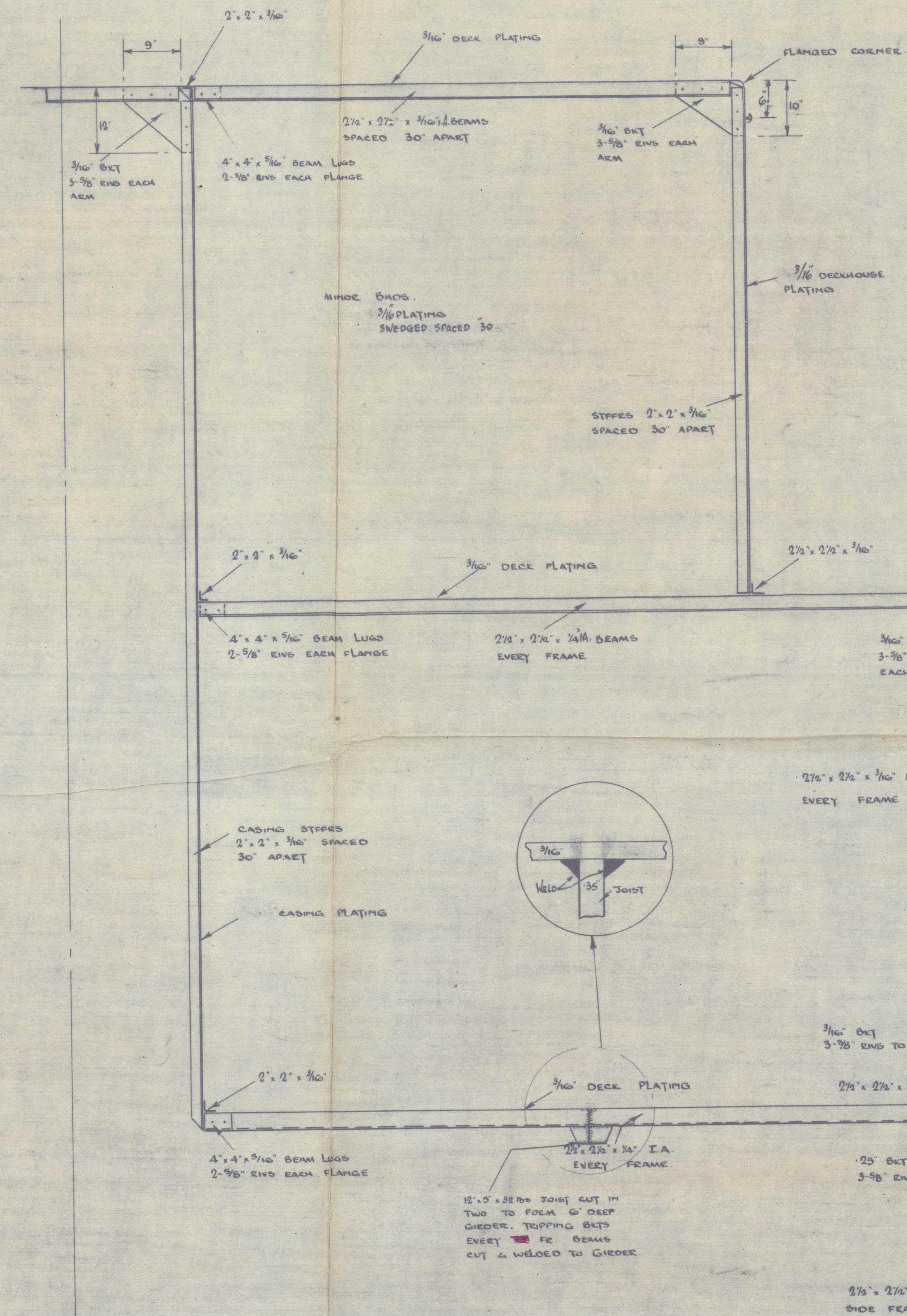
TO CLASS LLOYDS ~~100 A1~~ ^{"PONTON"} ~~TO COMPLY WITH RULES~~
~~& REGULATIONS "FOR RIVER & HARBOUR SERVICE~~
~~"IN PAPUA" WITH PERMISSION TO MAKE A VOYAGE~~
~~FROM THE RIVER ARMARTY ACROSS THE GULF OF~~
~~PAPUA TO PORT MORESBY EACH YEAR FOR OVERHAUL.~~

LOAD DRAFT 5'6" MOULDED

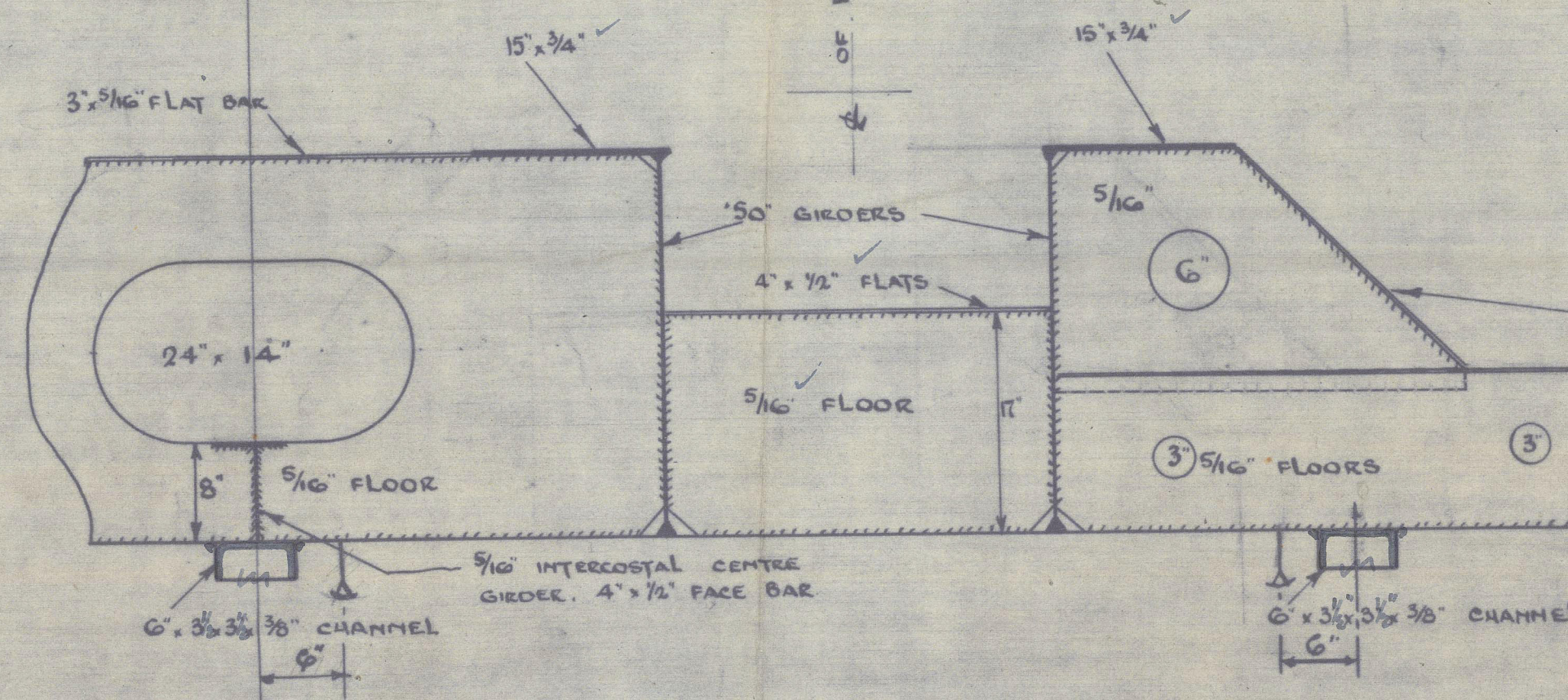
EQUIPMENT LETTER "B"		
HULL	102'25 (26 x 5.5) + .85 x 102'25 (6.0 x 5.5)	= 5268.5
POOP	85 (38.25 x 7)	= 197.8
DECKHOUSE	75 (24.75 x 7)	= 150.0
EQUIPMENT NUMERAL		= 3591.3

2 OFF - G CWT STOCKLESS BOWER ANCHOR } OWNERS REQUIREMENTS
 210 FATHOMS 1" STUD LINK CHAIN CABLE }

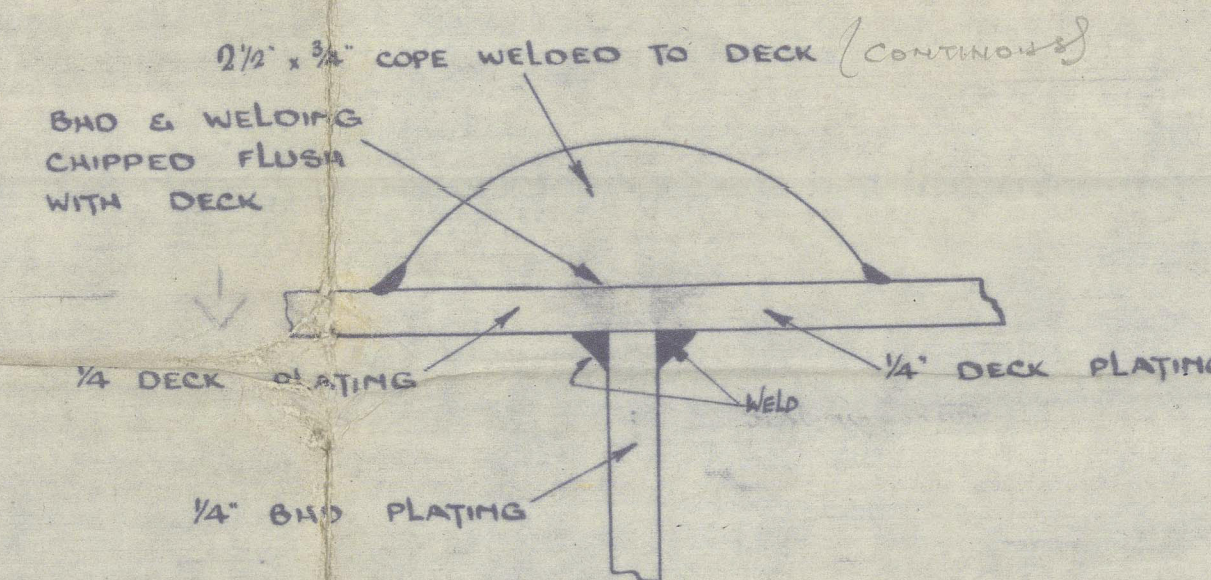
Towline and Hauling Ropes, to Rule requirements
 or equivalent, to be supplied.



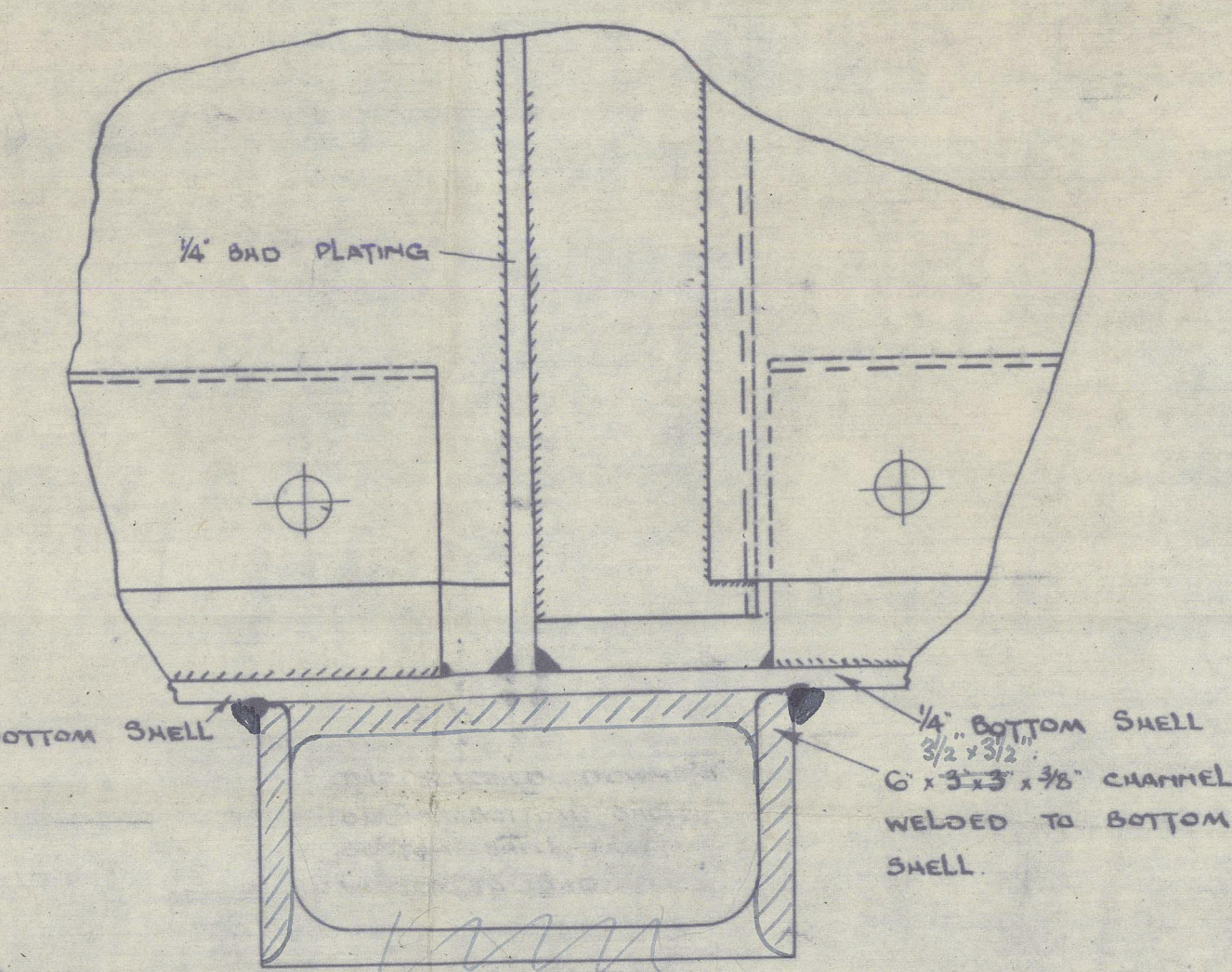
MAIN ENGINES GARDNER BLS-20FF
 150 BHP @ 800 R.P.M. EACH
 AT 2:1 REDUCTION GEAR
 FULL DETAILS OF ENGINE SET TO
 BE SUBMITTED LATER.



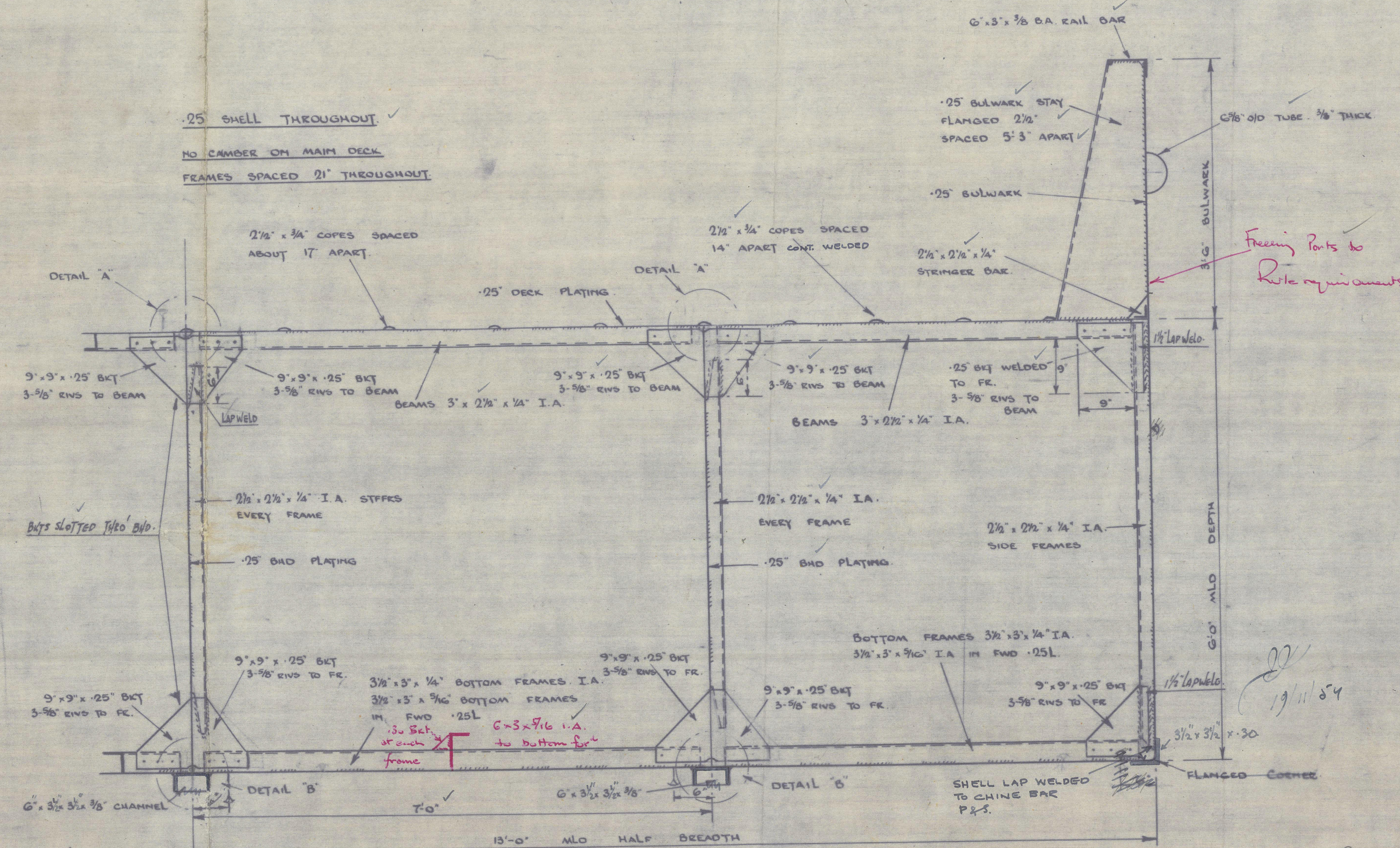
SECTION IN WAY OF ENGINE ROOM



SECTION A-A
 SCALE FULL SIZE



SECTION B-B
 SCALE HALF FULL SIZE



TYPICAL SECTION THRO' TANKS

CLELANDS (SUCCESSORS) LTD.
 WALLSEND-ON-TYNE
 DRAWN BY: B.F.S. CHECKED BY: DATE: 9.11.54.

012553-012563-0102

SHIP No: 206/7/9

MIDSHIP SECTION

CLELANDS (SUCCESSORS) LTD.

'GIMADA'

Newcastle upon Tyne RECORDS DEPT.

Report No. 112732

LONDON.

YARD no. 206

3

★ **'GEBOSO'**

Newcastle upon Tyne

Report No. 112733

YARD no. 207

012553-012563-0102



© 2021

Lloyd's Register
Foundation