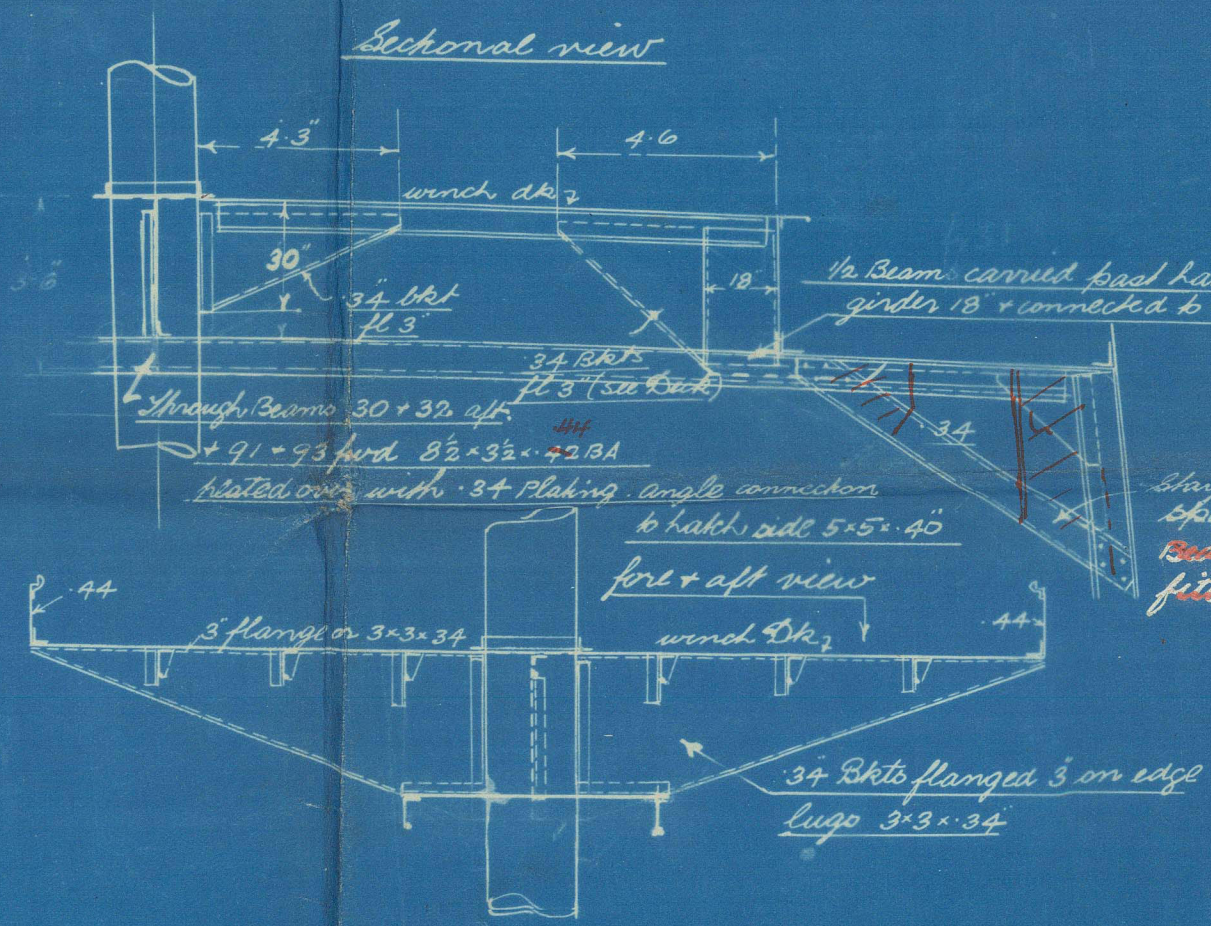
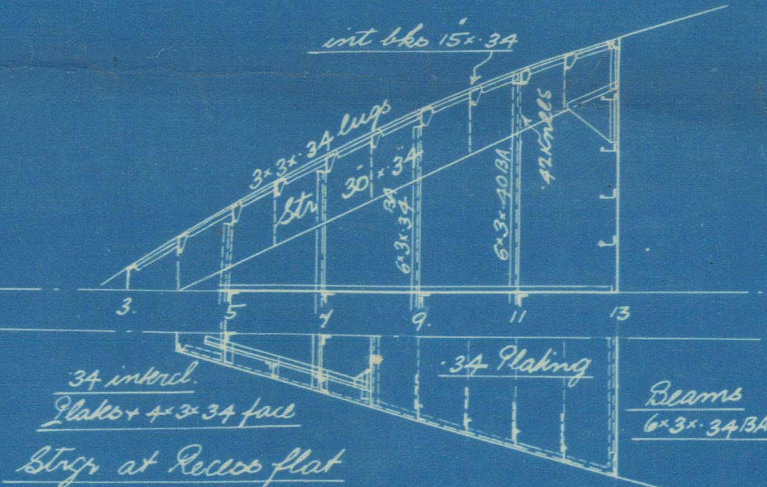


Profile & Deck Plan I.L. No 137.

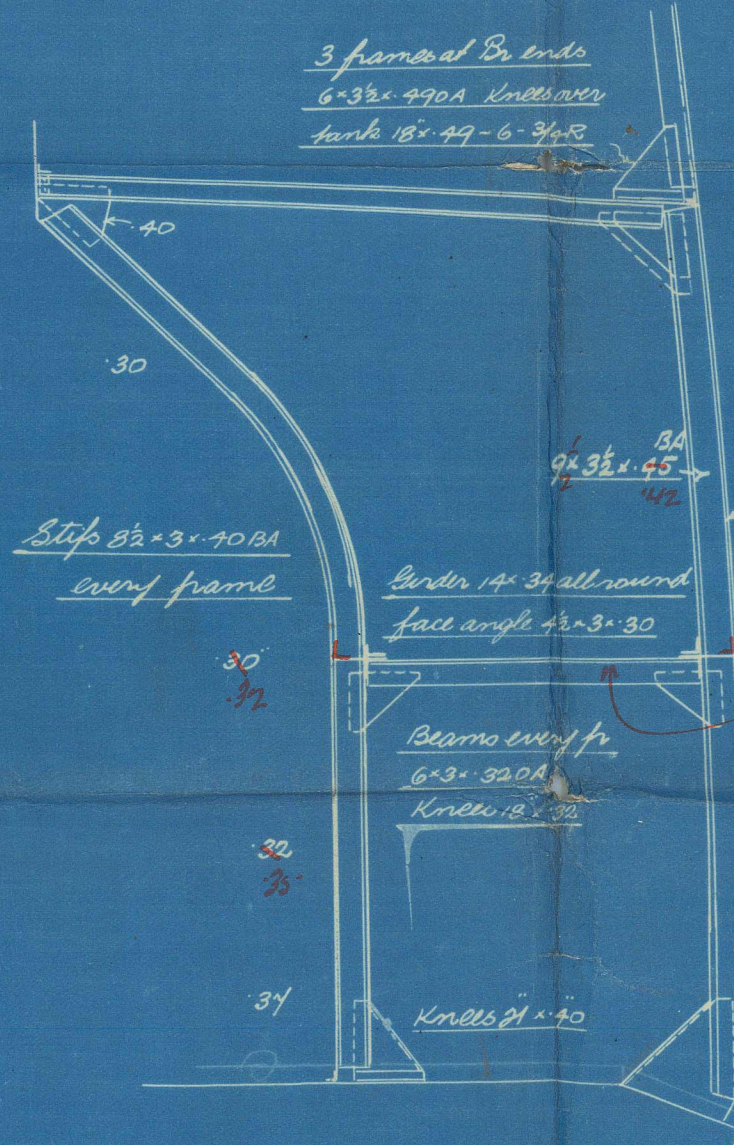
Scale 1/8" = 1 ft.

Stiffening of double bottom forward of 3/5 L

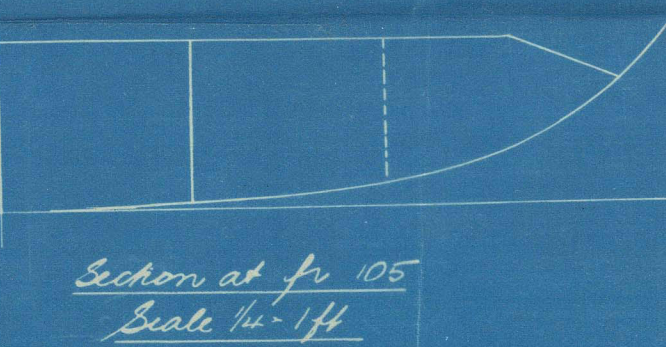
After Peak main Stairs



Winch Platform outboard track
Scale 1/4" = 1 ft.

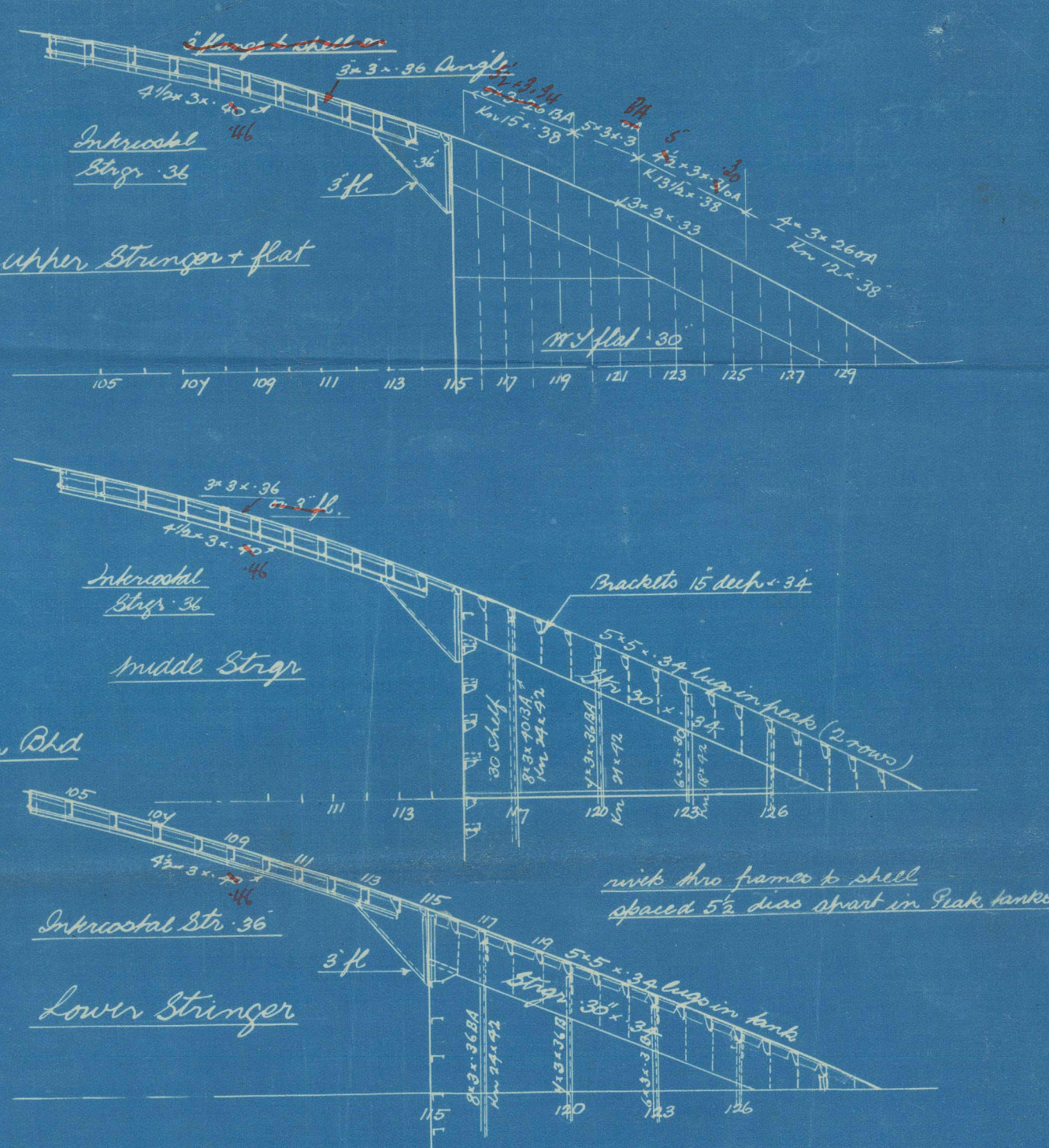


Stern through E.R. Mang. St.
Scale 1/4" = 1 ft.



Section at ft. 105
Scale 1/4" = 1 ft.

Rule thickness of L.B. & C. Stakes of shell (49 + 0.3 at 2 1/2 ft)
on flat of bottom carried forward to rule position of bottom. And



Plan view of tank - scale 1/8" = 1 ft.
Tank frames fwd of 3/5 L 5'-5" x 34' single with 2 complete rows of rivets
through frame & shell spaced 1/2" apart & three frames & floor 5' 10" dia. apart

Peak frame 5'-3" x 31'3" alternate frames braced
5'-3" x 30" intermediate no bracing
Peak side plating 3"

Peak to plating 30'-40' avg
Stops 4'-3" x 32'0" @ 30' 4" 2'-3/4" in dia

Hatch side plating up to stiff
continuous in way of wind Stk

Hatch side flanged 3 on edge

Hatch side flanged 3 on edge

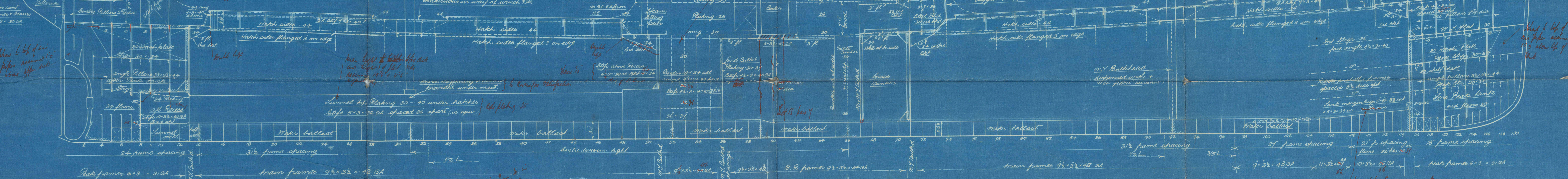
Hatch side flanged 3 on edge

Hatch side flanged 3 on edge

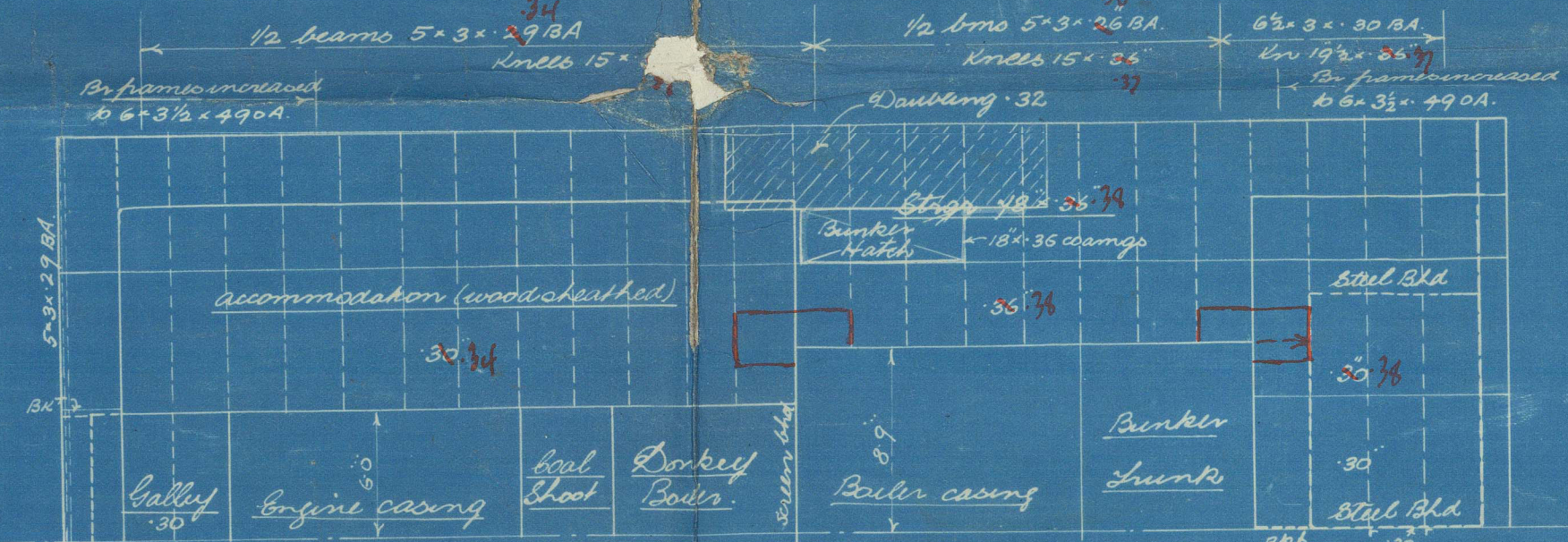
Hatch side flanged 3 on edge

Hatch side flanged 3 on edge

Hatch side flanged 3 on edge

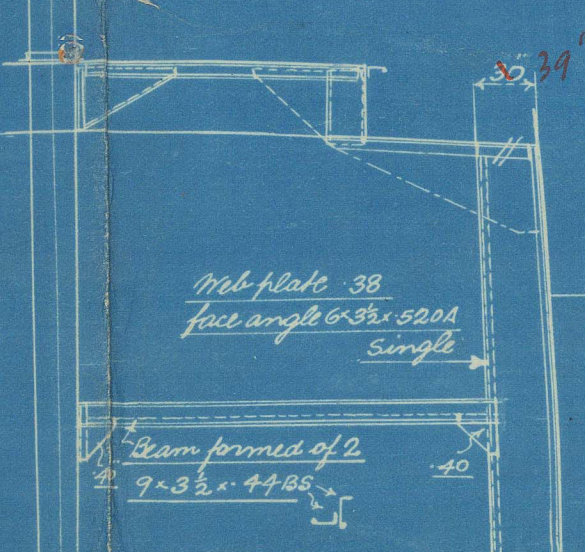


| Item | Butt 13 | Butt 51 | Butt 41 | Butt 115 | non 115 |
|------------|-------------------|-------------------|-------------------|-------------------|---------------|
| Plating | 30 | 25' 30" | 26' 35" | 26' 35" | 30 |
| Stiffening | 9'-3 1/2" x 40'0" | 9'-3 1/2" x 37'0" | 9'-3 1/2" x 37'0" | 9'-3 1/2" x 40'0" | 6'-3" x 32'0" |
| Stiffening | 24 | 30'0" | 30'0" | 24 | 36 |
| Stiffening | 3 1/2" x 40 | 3 1/2" x 40 | 3 1/2" x 40 | 3 1/2" x 45 | 3 1/2" x 40 |
| Stiffening | 3'-3" x 40 | 3'-3" x 36 | 3'-3" x 36 | 3'-3" x 36 | " |
| Stiffening | 3'-3" x 40 | 3'-3" x 36 | 3'-3" x 36 | 3'-3" x 36 | " |
| Stiffening | 22'3" x 34' 1/2" | 22'3" x 34' 1/2" | 22'3" x 34' 1/2" | 22'3" x 34' 1/2" | " |
| Rivets | 6'-3/4" | 6'-3/4" | 6'-3/4" | 6'-3/4" | " |



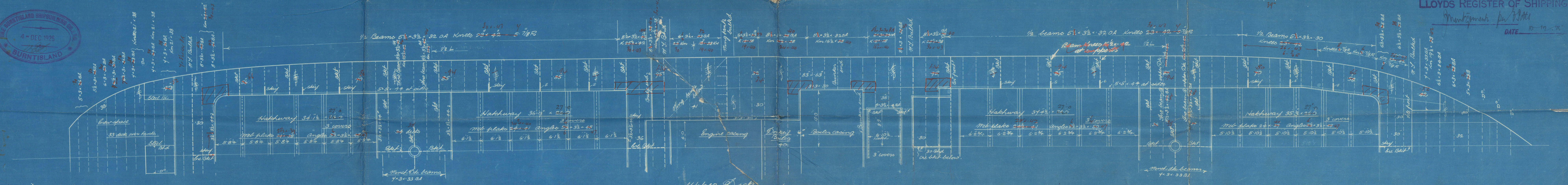
Bridge Deck

Detail of Mt. at ft. 92
Scale 1/8" = 1 ft.



Fore Deck

Poor Deck



Plan No 1285
Print No 2966

APPROVED
LLOYD'S REGISTER OF SHIPPING
Particulars for I.L. No 137
DATE 10-12-1919

Burntisland S.B.C. Ltd.

S.S. No 137

PROFILE
&
DECK S.

J. S. Greathope

AVIOR

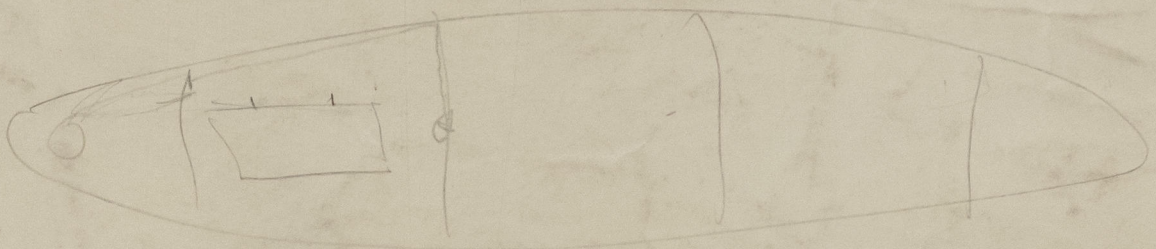


© 2021

Lloyd's Register
Foundation

012544-012662-0035

0036



© 2021

Lloyd's Register
Foundation