

87601

signature
with stamp
at 2.3.27

29/3/27

No 278
FORGING PLAN
SCALE 3/4" = 1 FOOT

TO LLOYDS TESTS REQUIREMENTS & INSPECTION

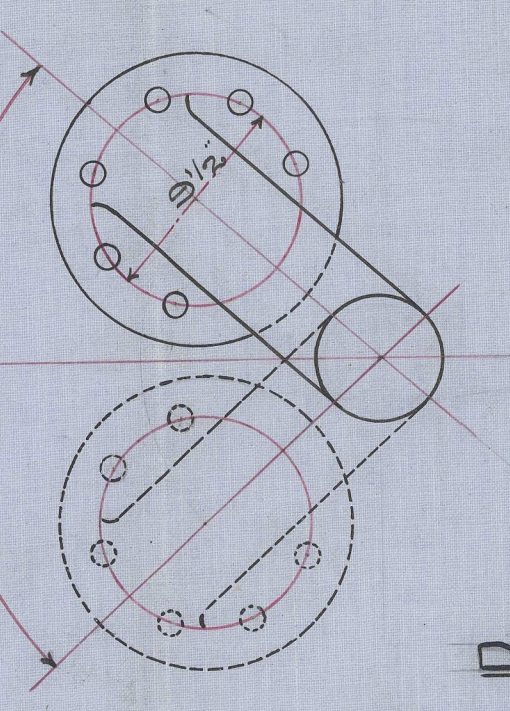
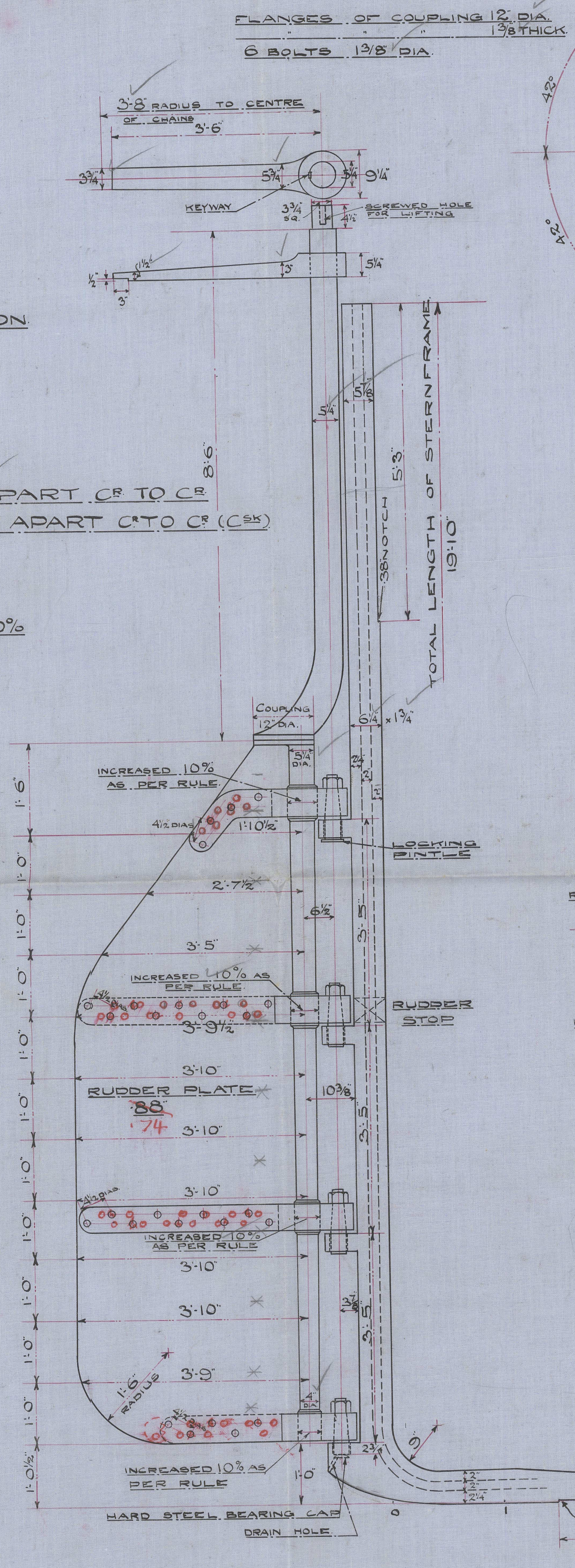
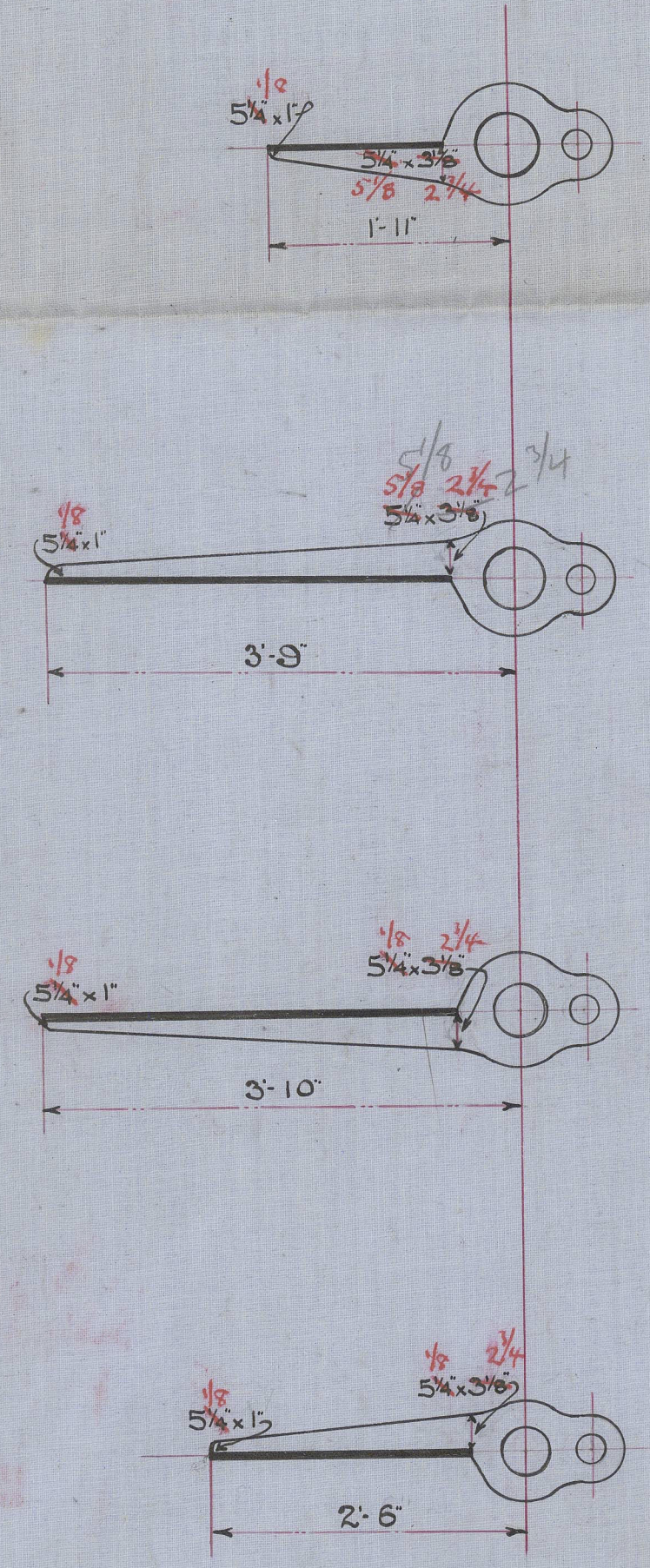
$A = 39.6 \text{ sq. ft.}$ $D = 2.2$

$A \times D = 87.12$

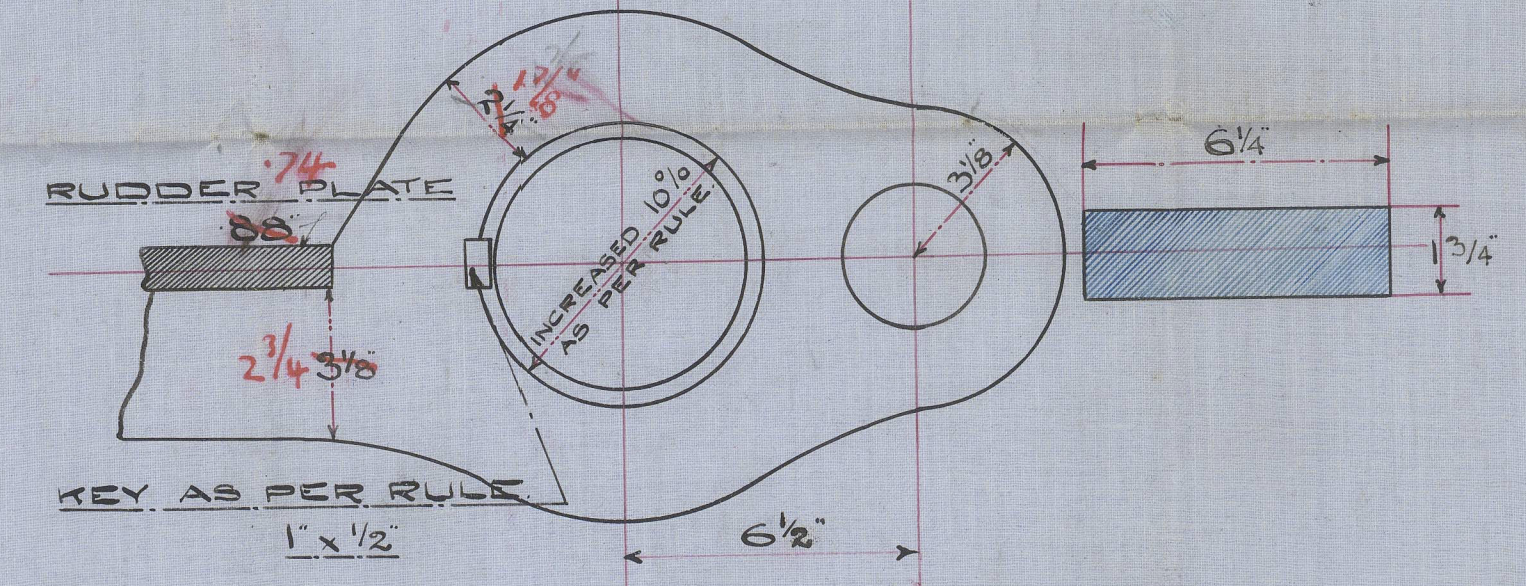
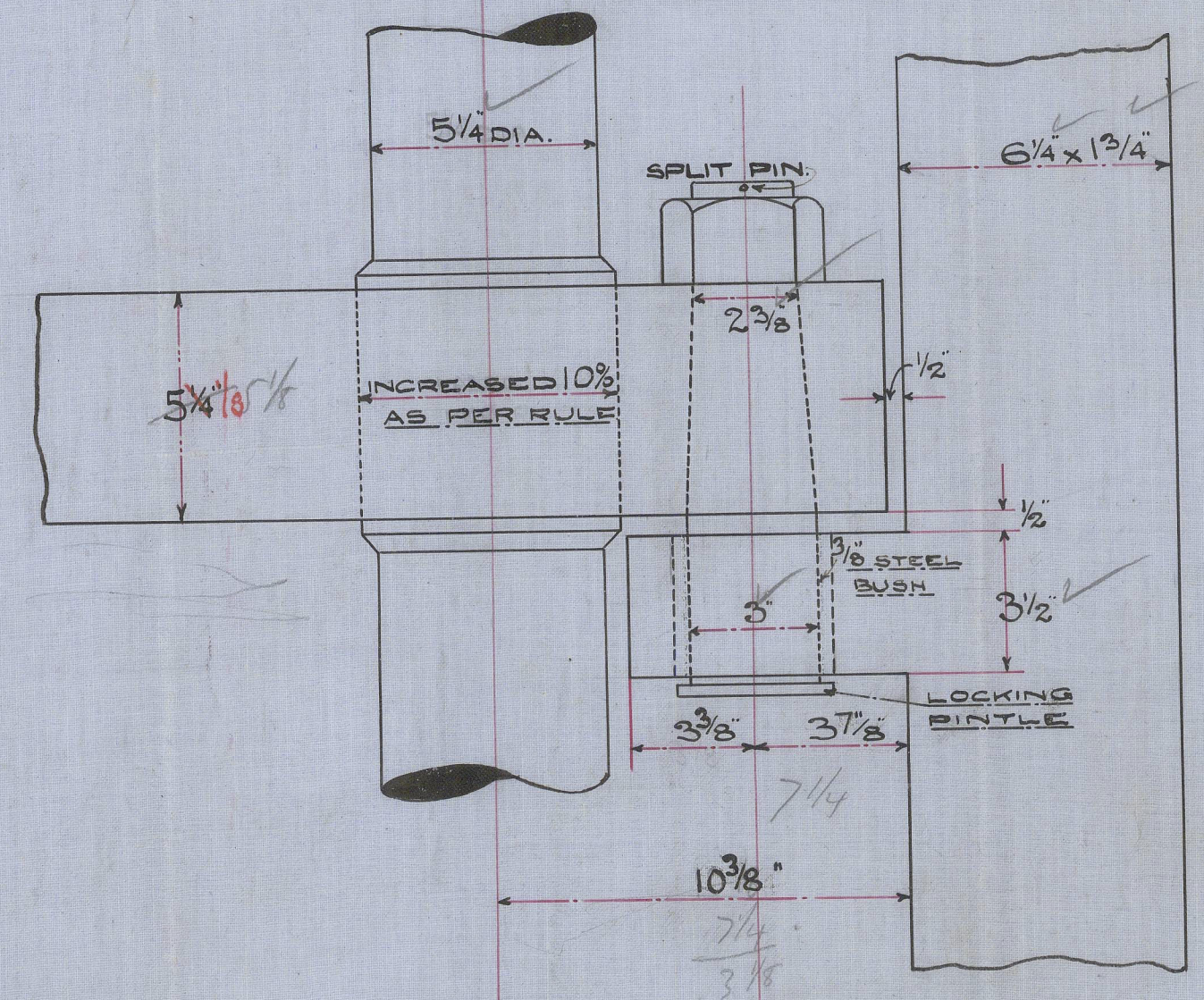
SPEED UNDER 10 KNOTS

RIVETS IN STERNFRAME 1" DIA. SPACED 5" APART C.T. TO C.T.
RIVETS IN RUDDER ARMS 1 1/8" DIA. SPACED 4 1/2" DIAS. APART C.T. TO C.T. (C.S.K.)
(REEL)

NOTE: DIAMETER OF RUDDER HEAD INCREASED 10%
ABOVE LLOYDS REQUIREMENTS



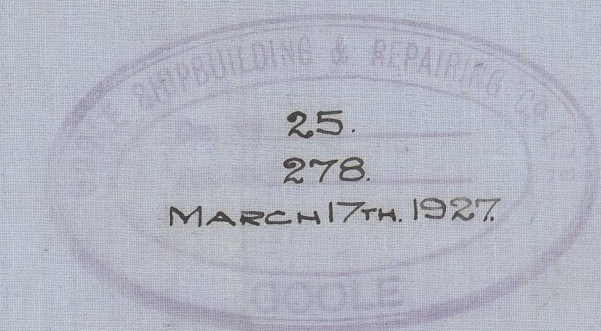
**DETAIL OF PINTLES
AND GUDGEONS**
SCALE 3/4" = 1 FOOT



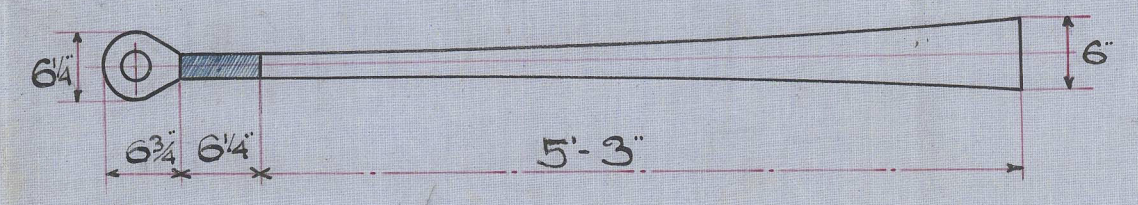
RUDDER STOP
SCALE 1/2" = 1 FOOT

TEMPLATES OF SECTIONS
THROUGH FOOT OF
STERNFRAME WILL
BE SUPPLIED.

W.S.
29.3.27



THE GOOLE SHIPBUILDING & REPAIRING CO. LTD.
GOOLE



No 278

Forgings

approved plan.

Love & B. R. Co. Ltd.

Paterson
Pulver

Rule 4. E. Report No. 38455

8008-012513-0008



© 2021

Lloyd's Register
Foundation