

# No 278 RUDDER PLAN

SCALE 3/4" = 1 FOOT  
 TO LLOYDS TESTS REQUIREMENTS AND  
 INSPECTION

A = 42.42 D = 2.15

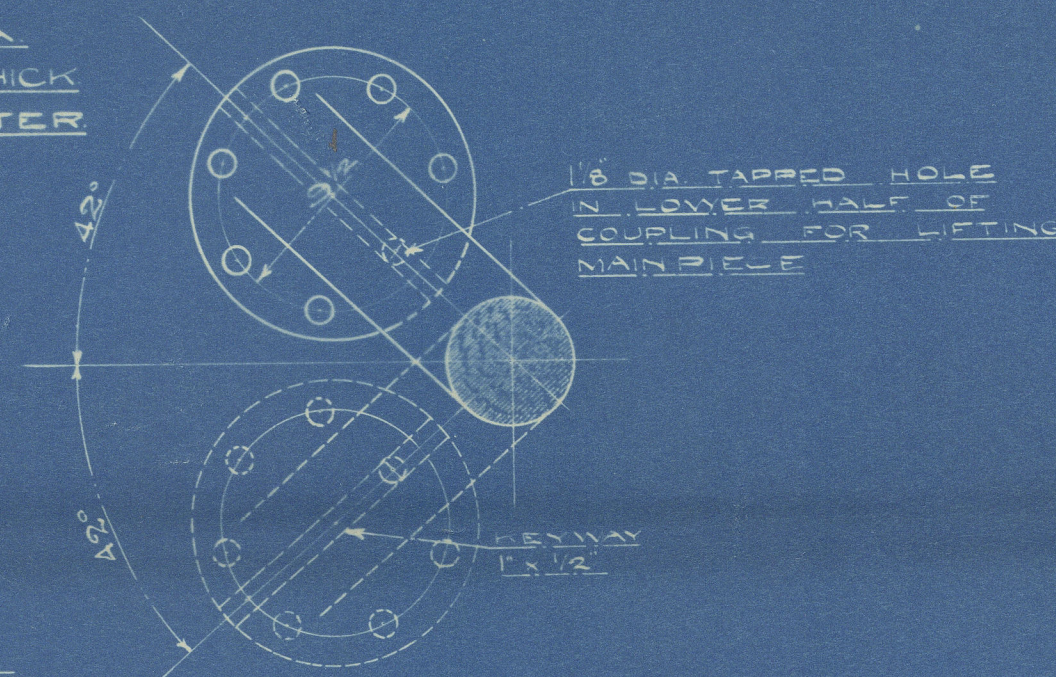
A x D = 91.203

SPEED UNDER 10 KNOTS

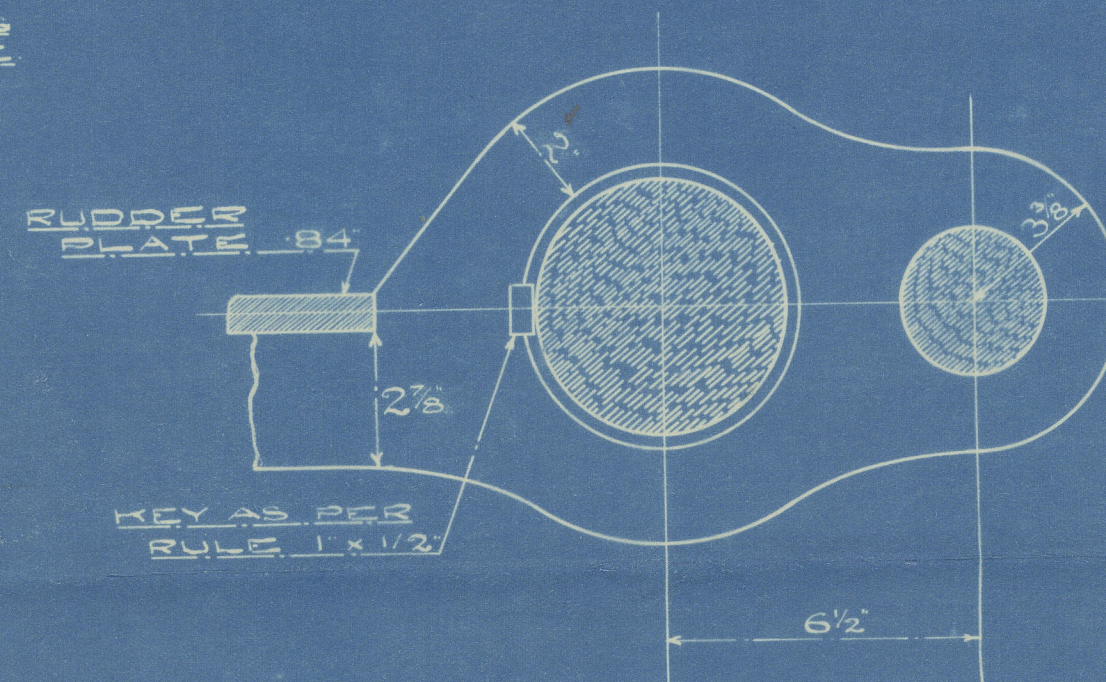
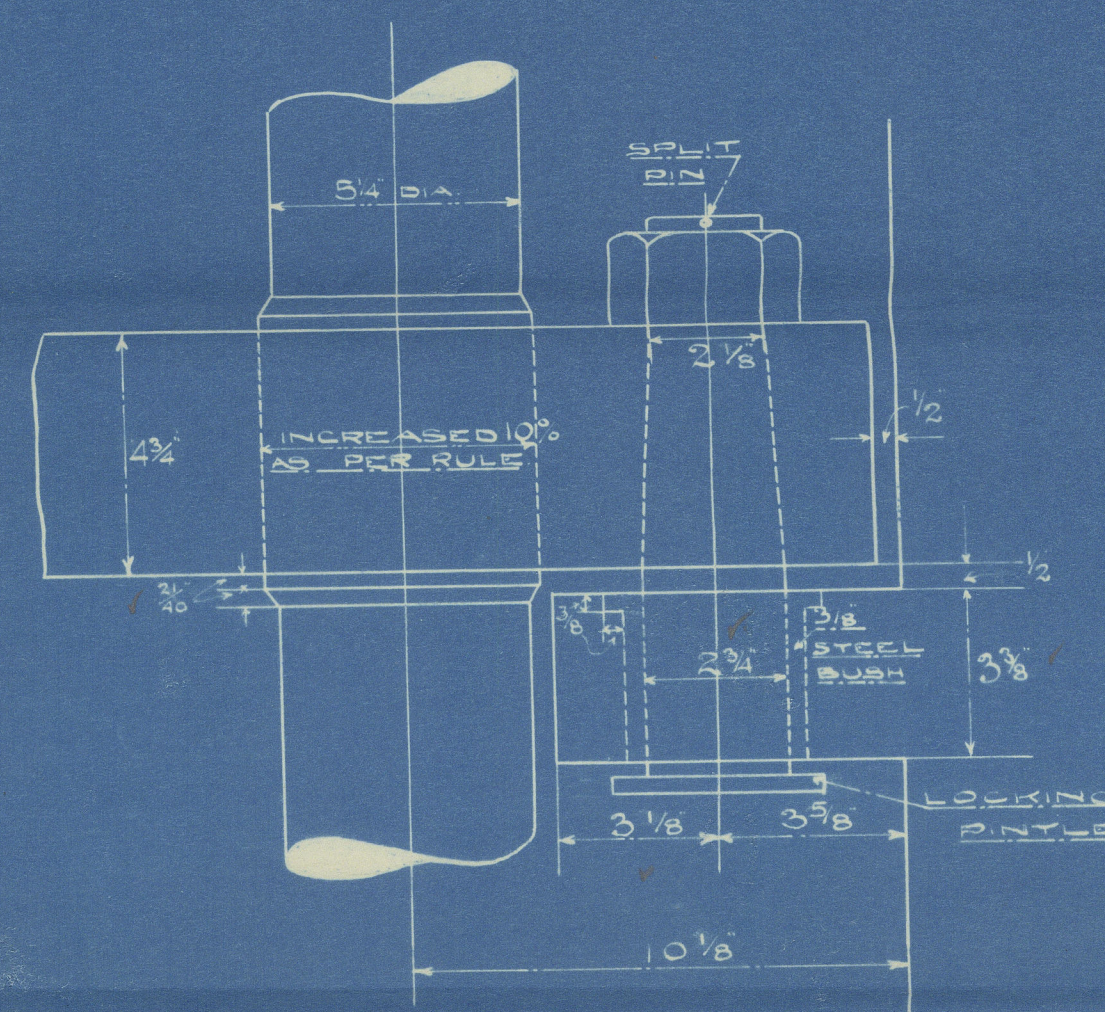
RIVETS IN RUDDER ARMS 1" DIA (CSK)  
 SPACED 4 1/2" DIAS. APART CR. TO CR. (REELLED)

NOTE:- DIAMETER OF RUDDER HEAD  
 INCREASED 10% ABOVE LLOYDS  
 REQUIREMENTS

FLANGES OF COUPLING 12" DIA  
 1 3/8" THICK  
 6 FITTED BOLTS 1 3/8" DIAMETER



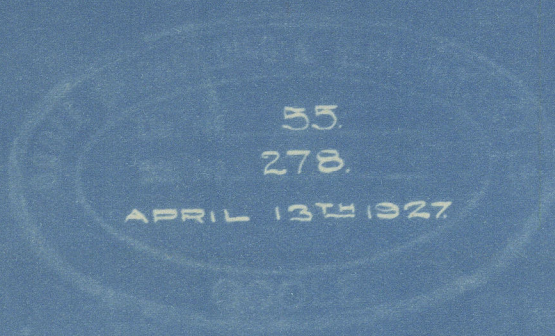
DETAIL OF PINTLES  
 AND GUDGEONS  
 SCALE 3/4" = 1 FOOT



RUDDER STOP  
 SCALE 1 1/2" = 1 FOOT

THE GOOLE SHIPBUILDING & REPAIRING CO. LTD  
 GOOLE

26-4-27  
 HLL





No 278

Amended Rudder Plan  
(approved).

Goole S.B. & R. Co.

---

"Pulaski"

June 4-8. Rpt. no. 38453

012508 - 012513 - 0006



© 2021

Lloyd's Register  
Foundation