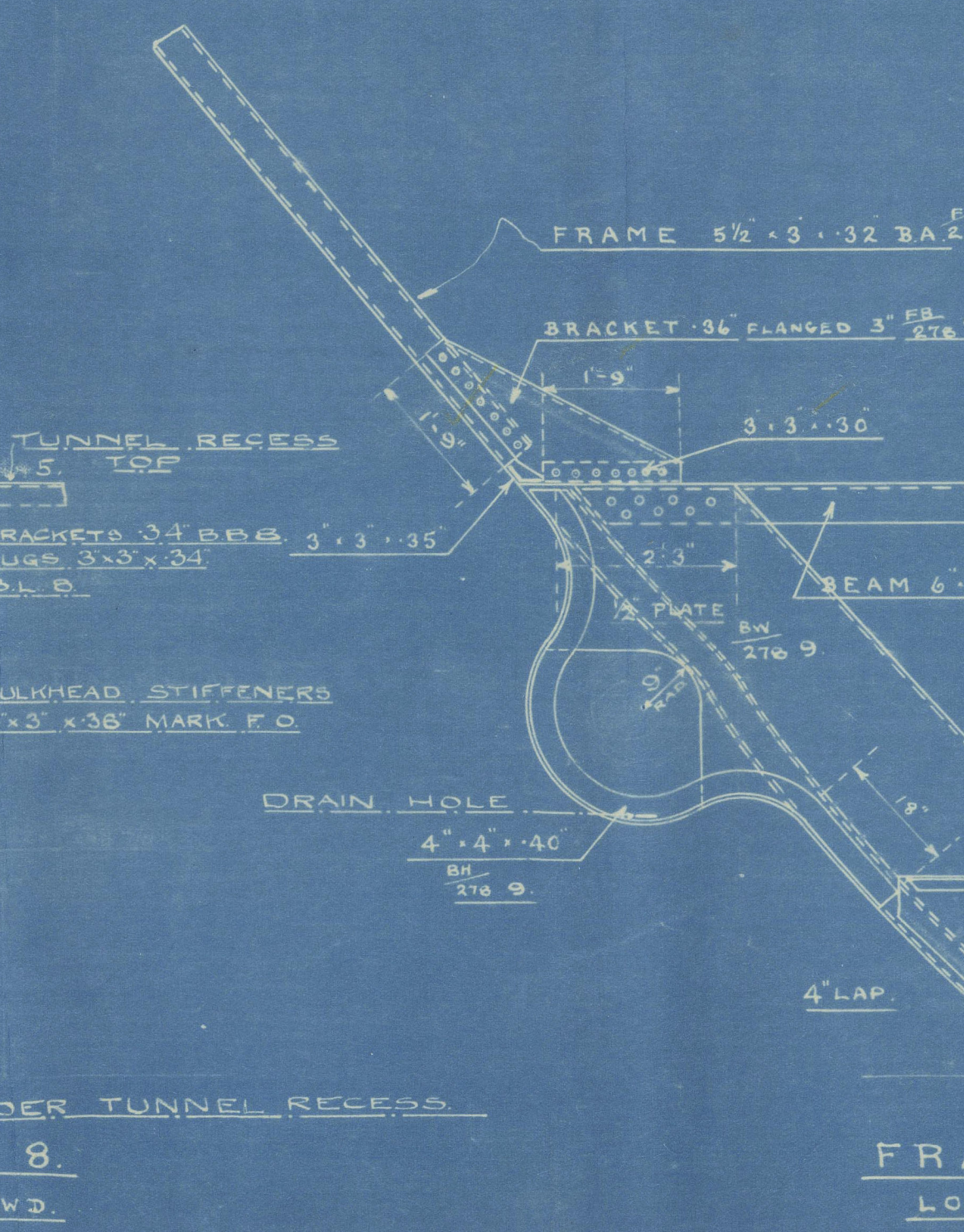
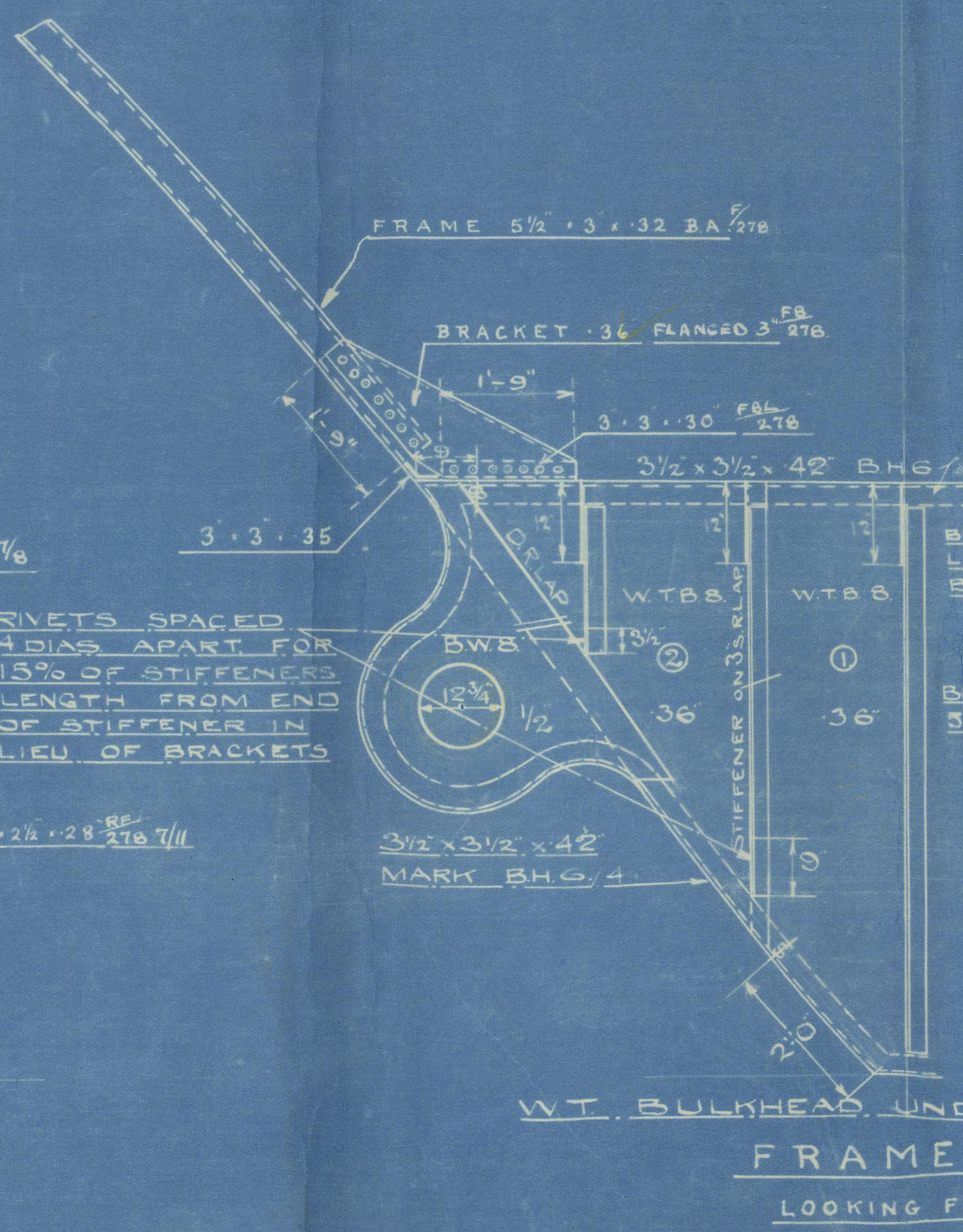
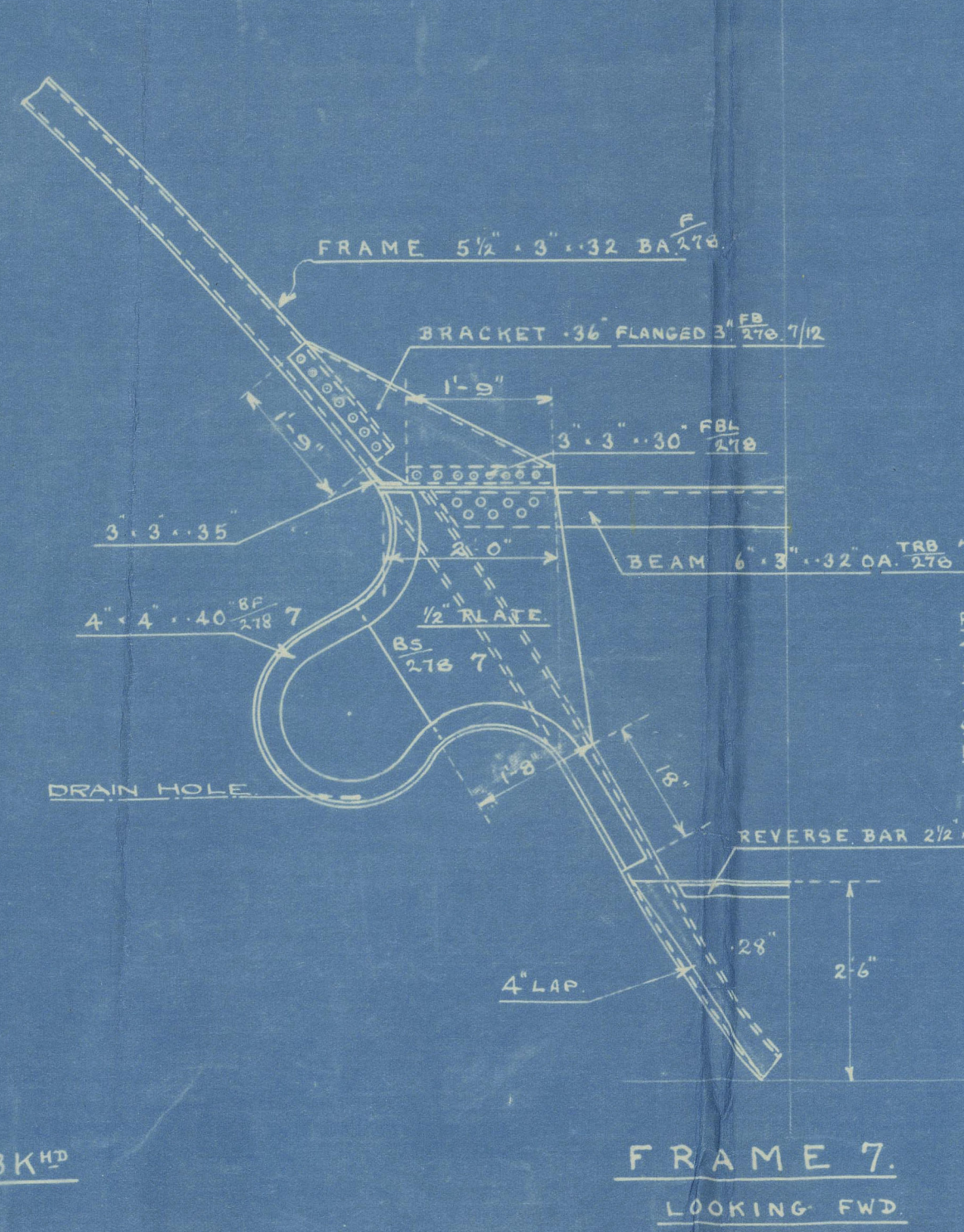
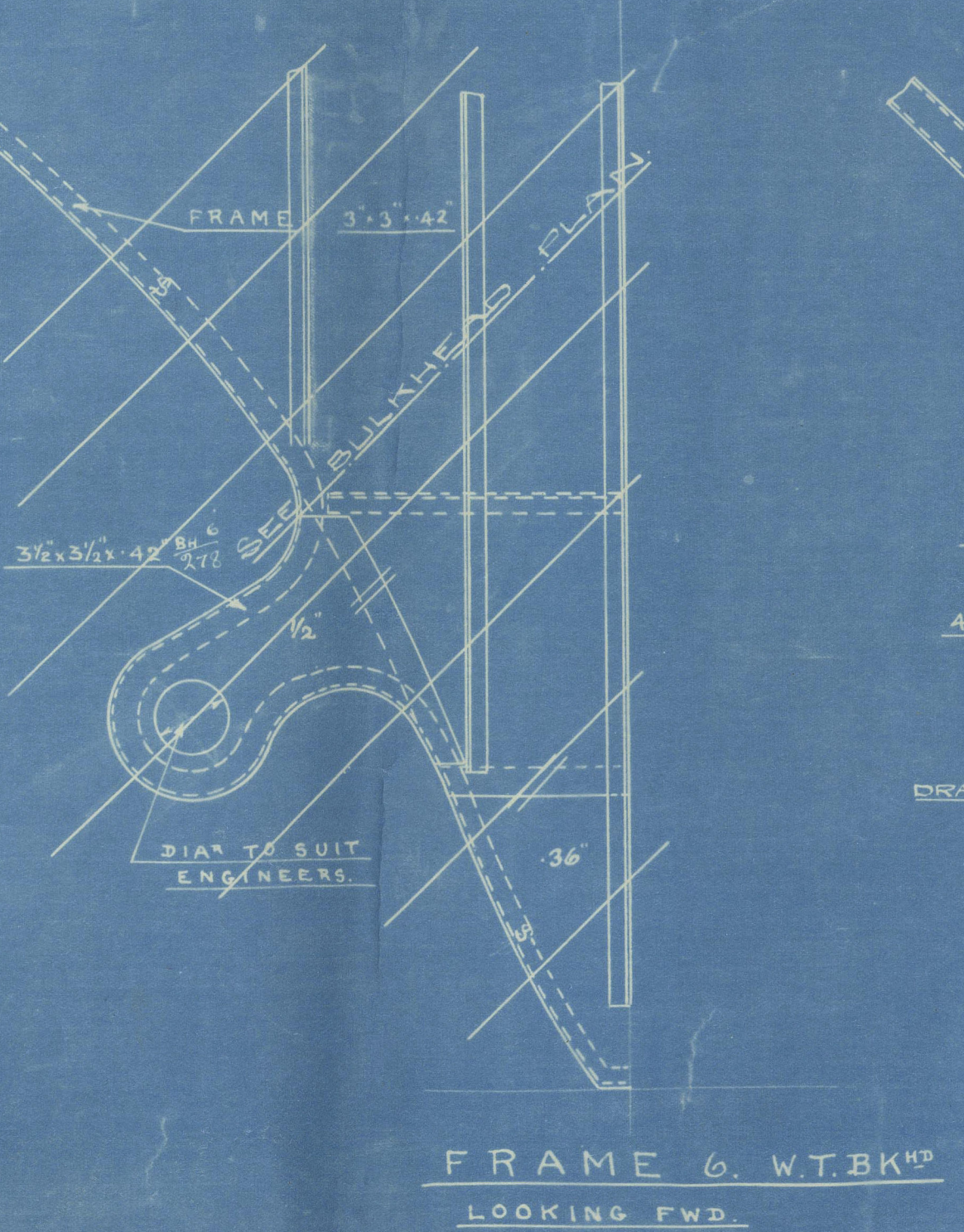
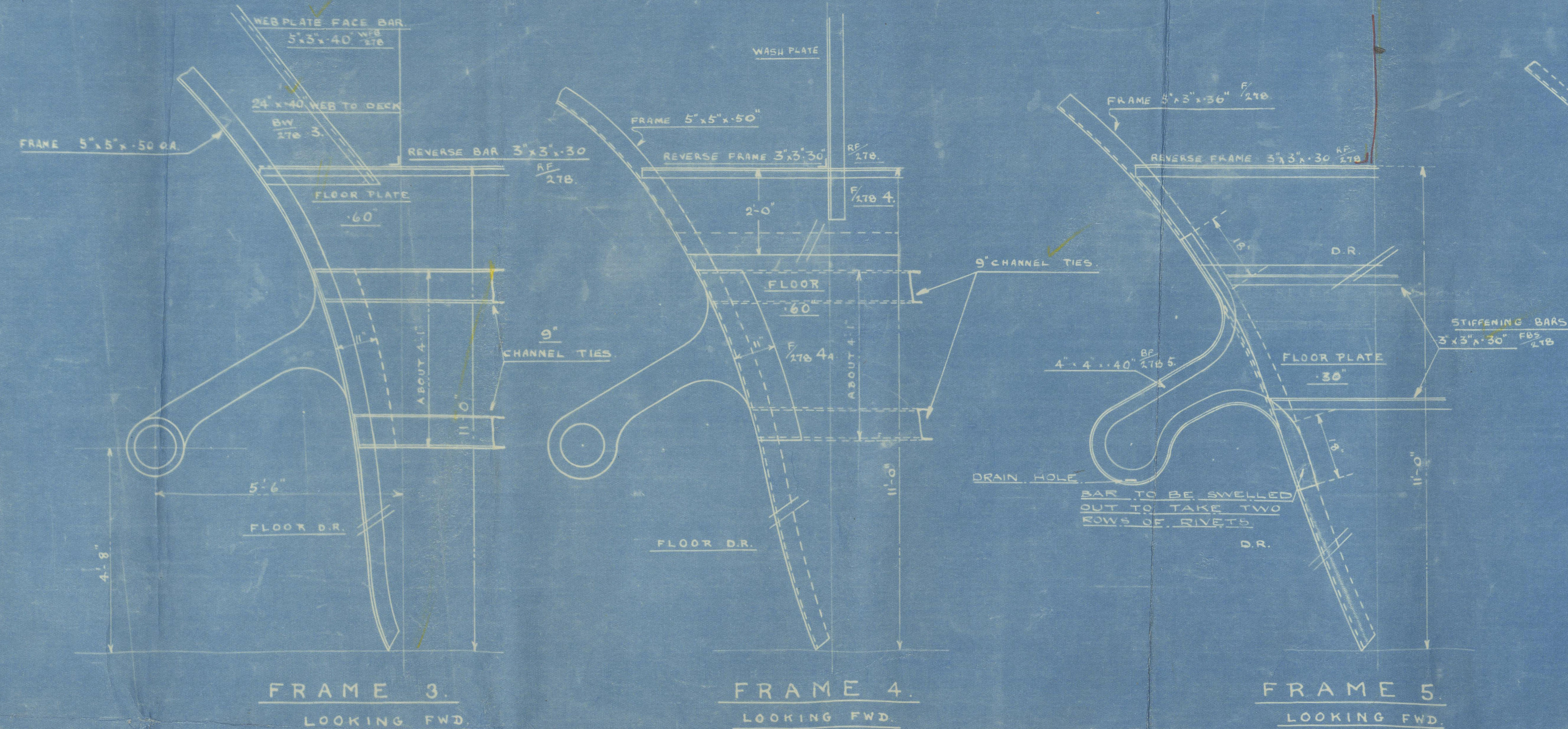


14/6/27.

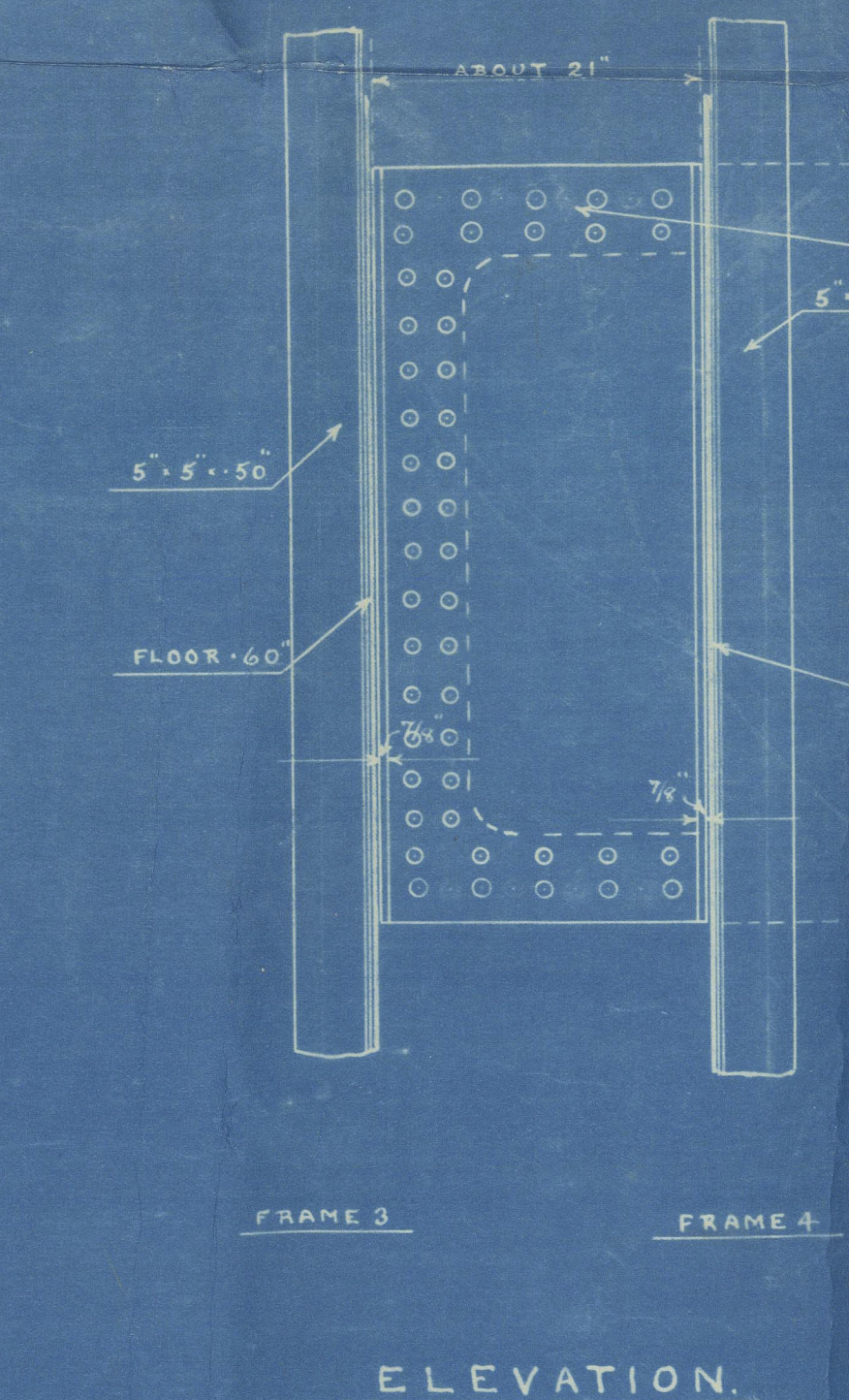
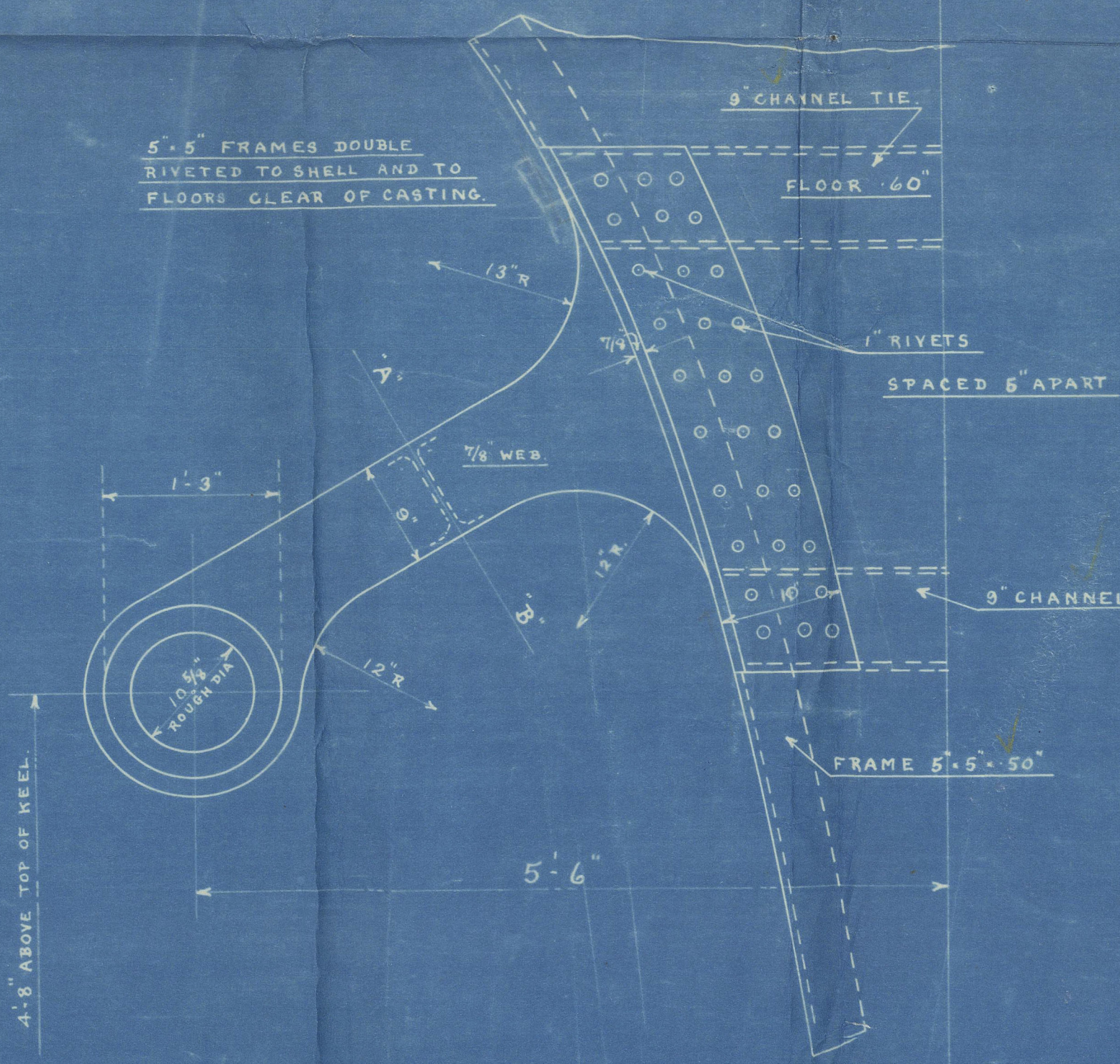
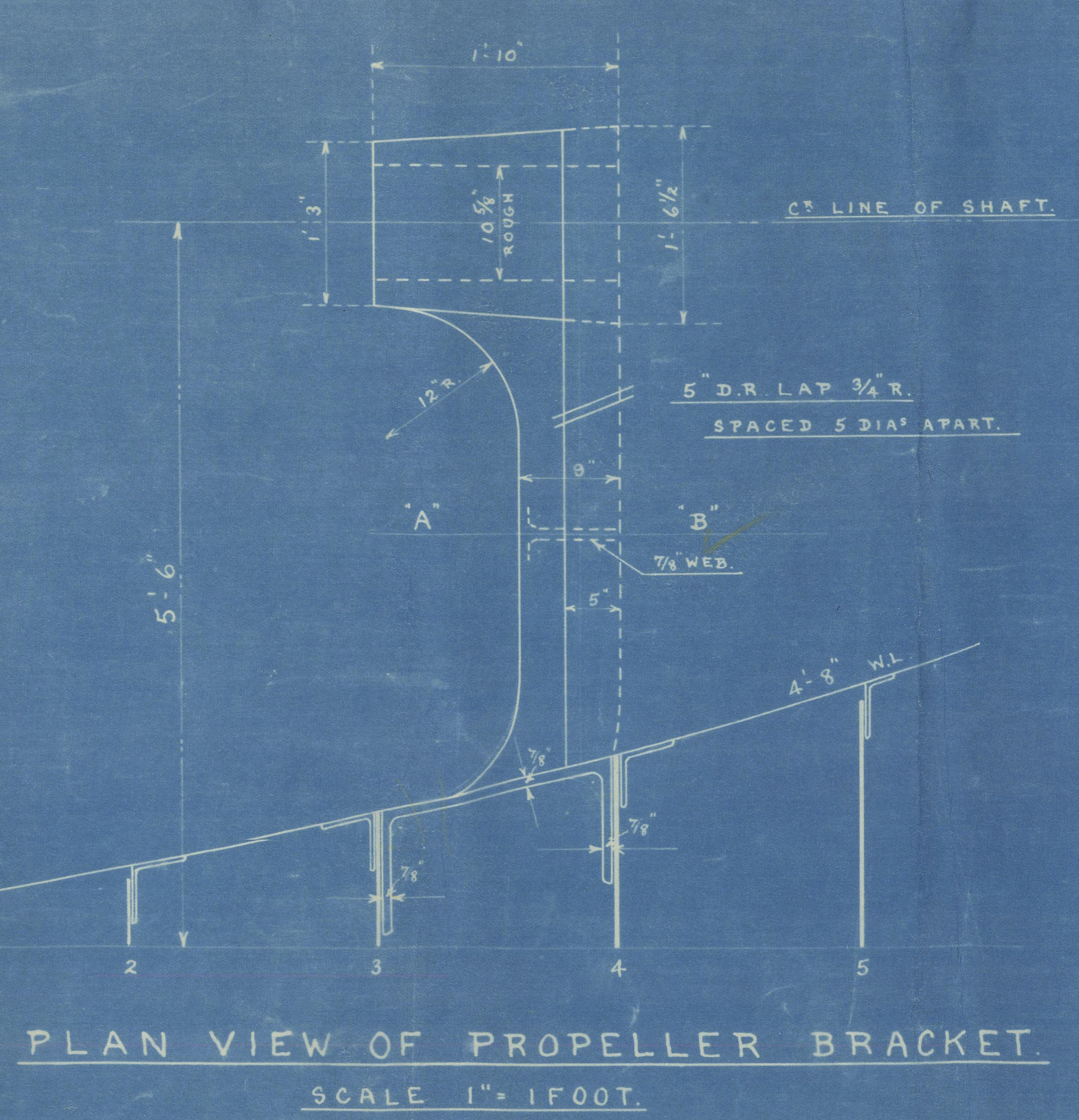
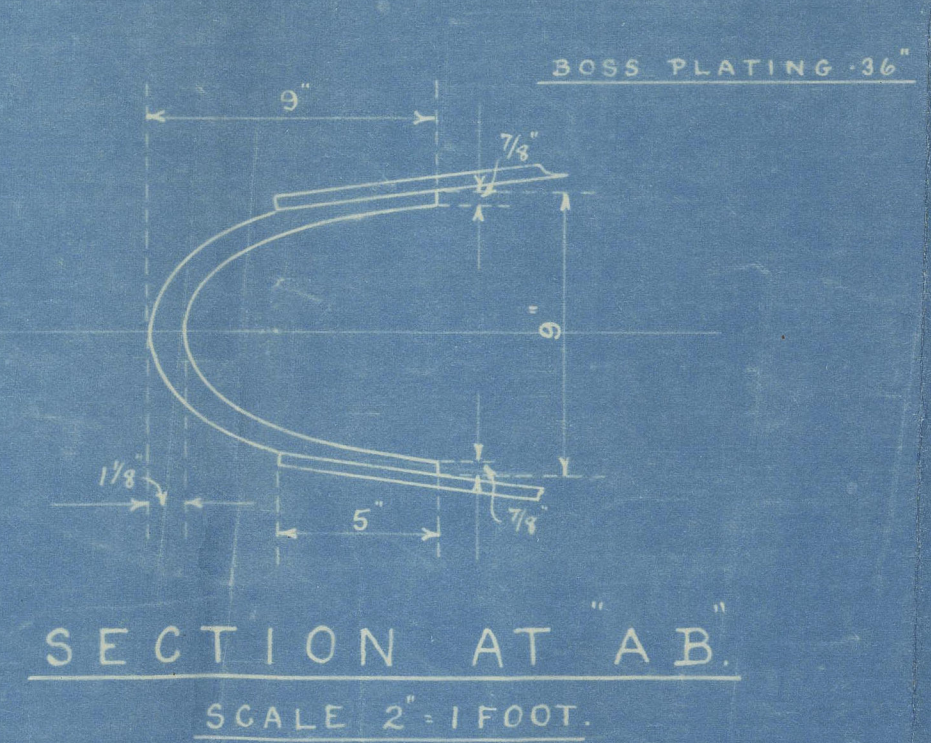
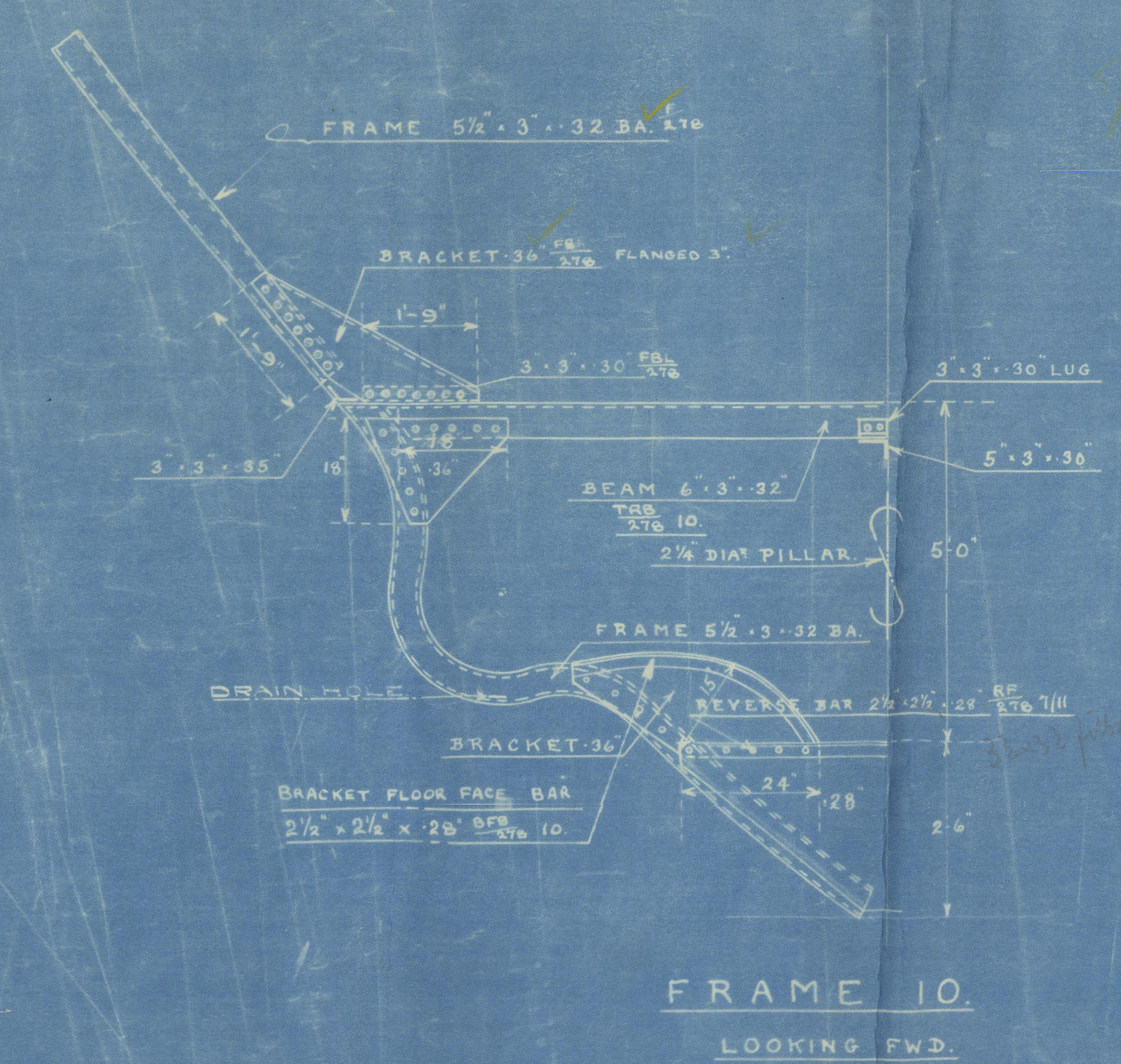


# N<sup>o</sup> 278. PROPELLER BOSSING.

SCALES 1/2" = 1' 6" 2" = 1' 0".  
DIA. OF TAIL SHAFT 6 1/8".  
ENGINE REVOLUTIONS 125.  
SPEED UNDER 10 KNOTS.

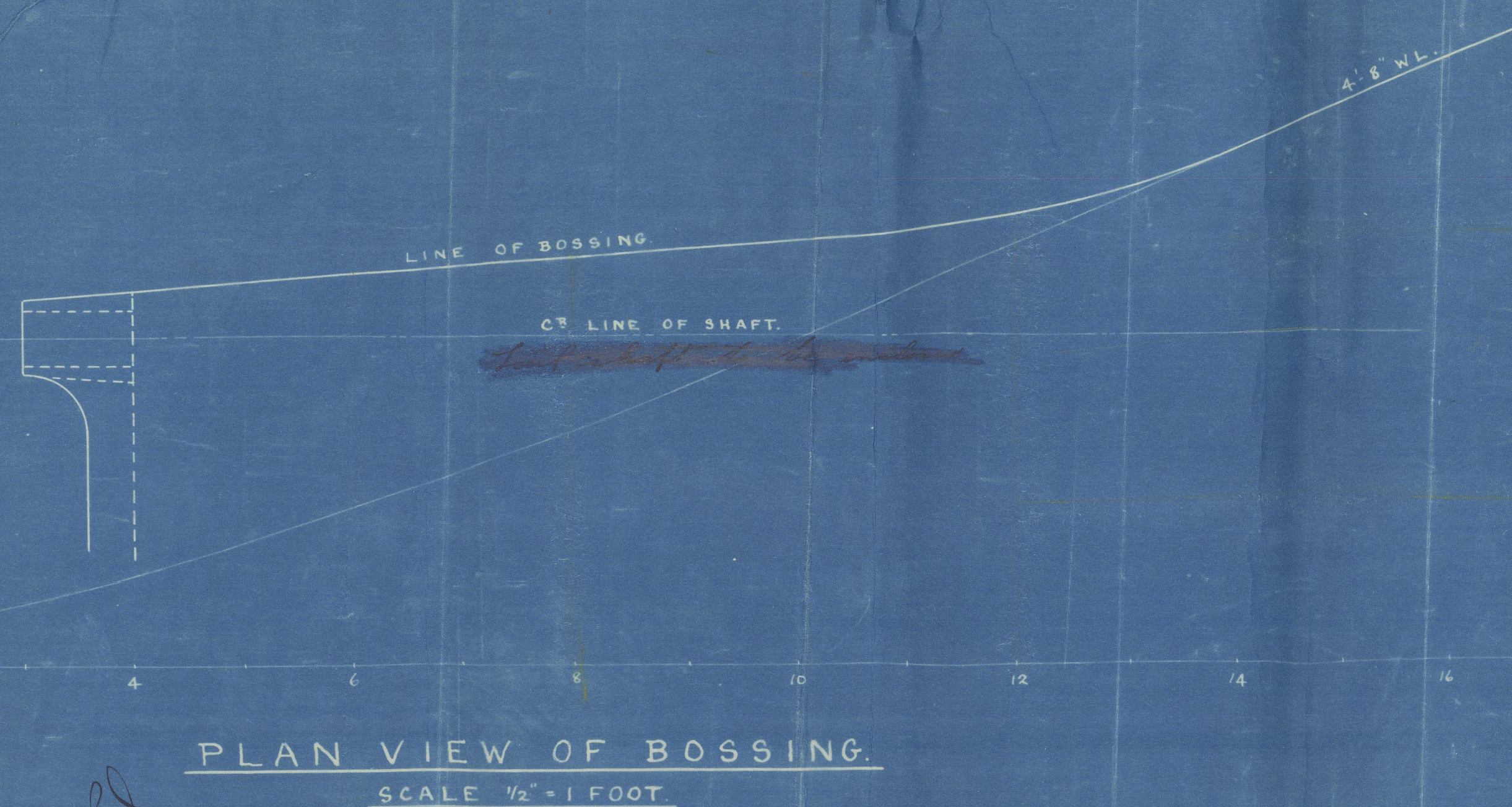
PROPELLER BRACKETS TO BE CAST STEEL.

75.  
278.  
MAY 23<sup>rd</sup> 1927



RIVETING.

BRACKETS TO MAIN FRAMES	7 DIA. 6" TO CR.
BOSS ANGLE TO SHELL	7 DIA. 6" TO CR.
BOSS BRACKETS	7
FRAMES TO FLOORS IN AFTER PEAK	5 1/2 DIA. 6" TO CR.
FRAMES " " FWD OF A.P.	7 DIA. 6" TO CR.
FRAMES " SHELL " " "	7
FRAMES " " IN A.P.	5 1/2





No 298

Amended plan of Propeller  
Boosing shewing alteration  
to not W.T. Buckhead.

Goule 813. & R. Co. La.

S.S. "Pukeko"

Goule 4 E. Rpt. No 38453

012503-012518 - 0005



© 2021

Lloyd's Register  
Foundation