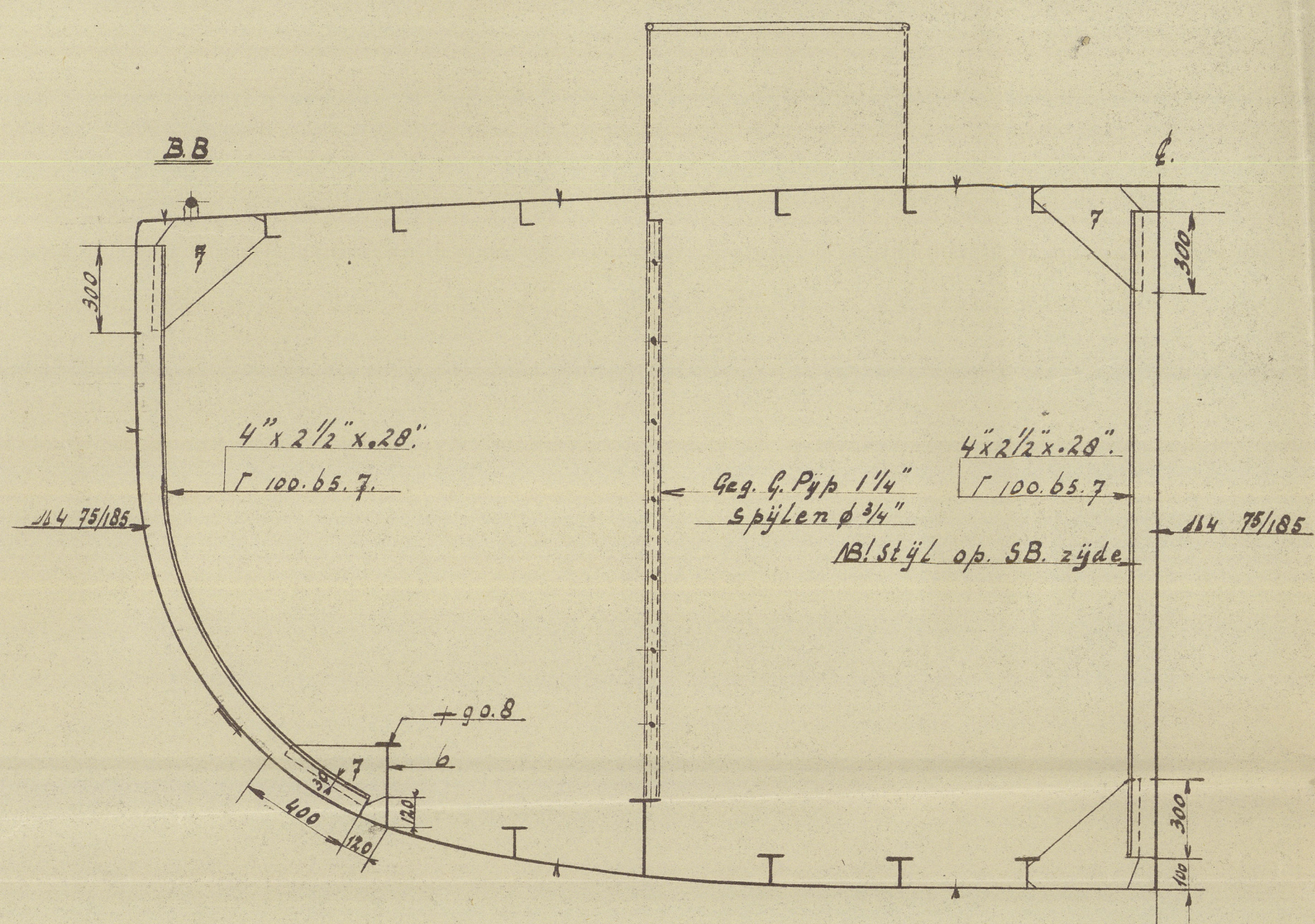
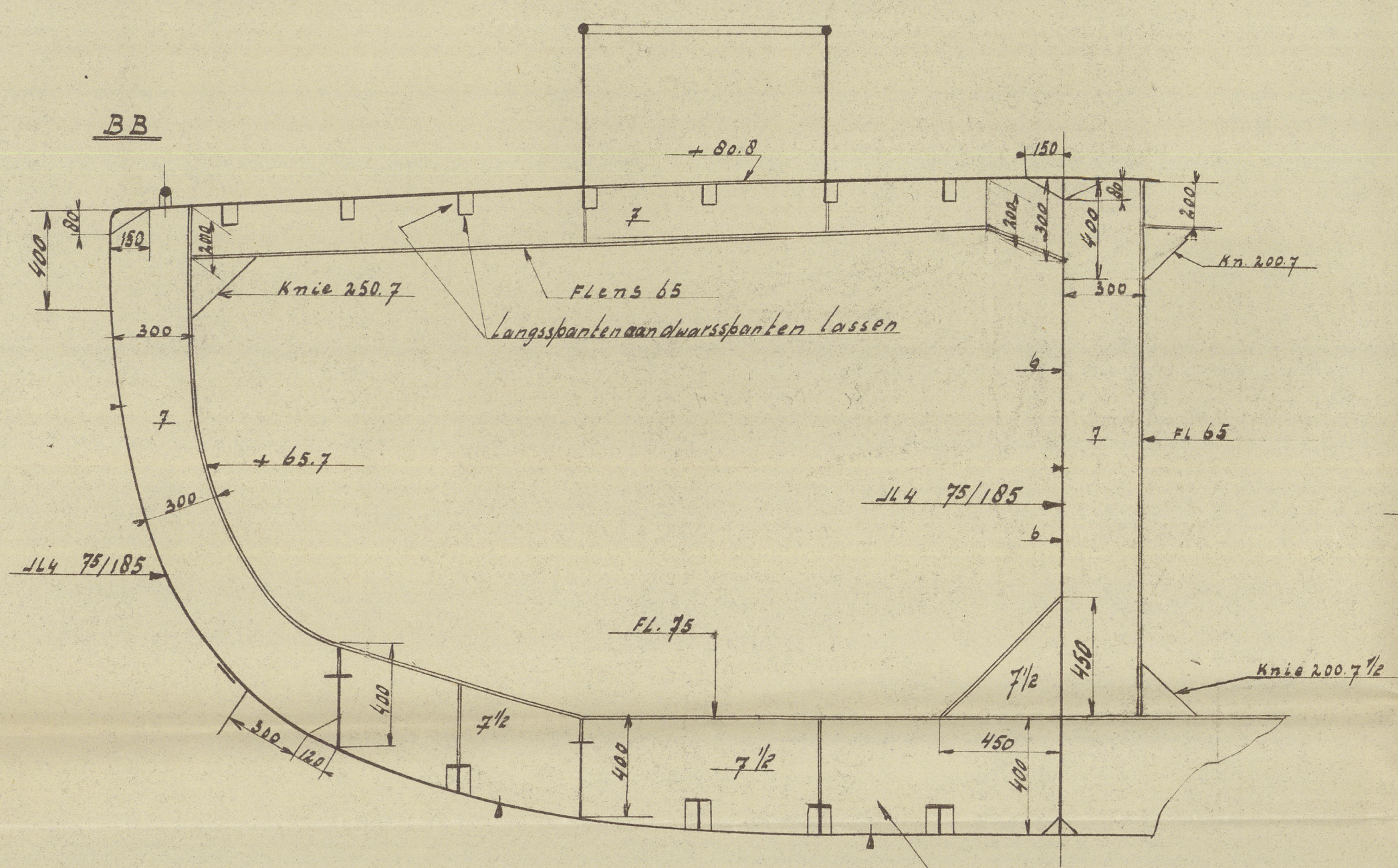


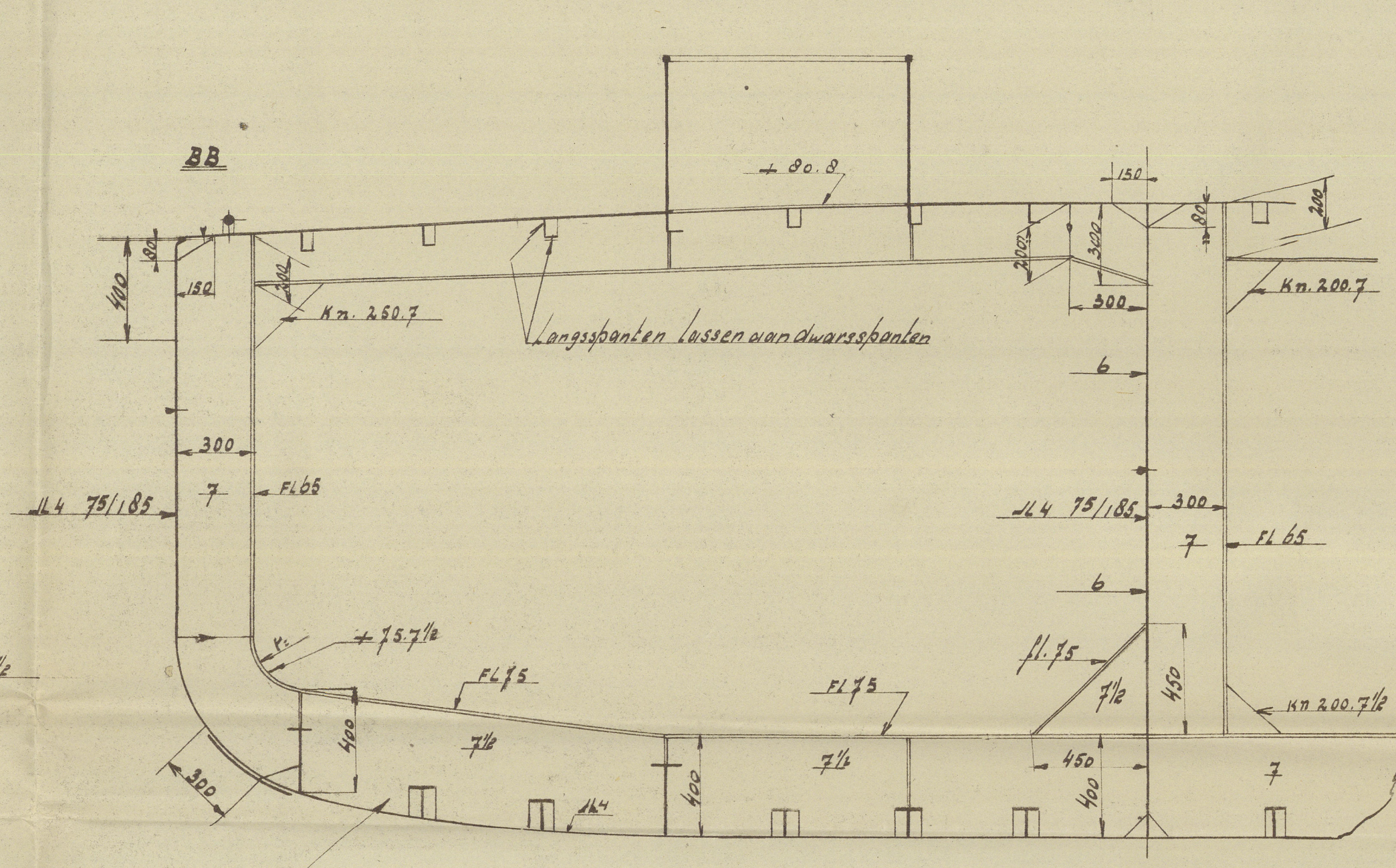
Doorsnede Spt 59



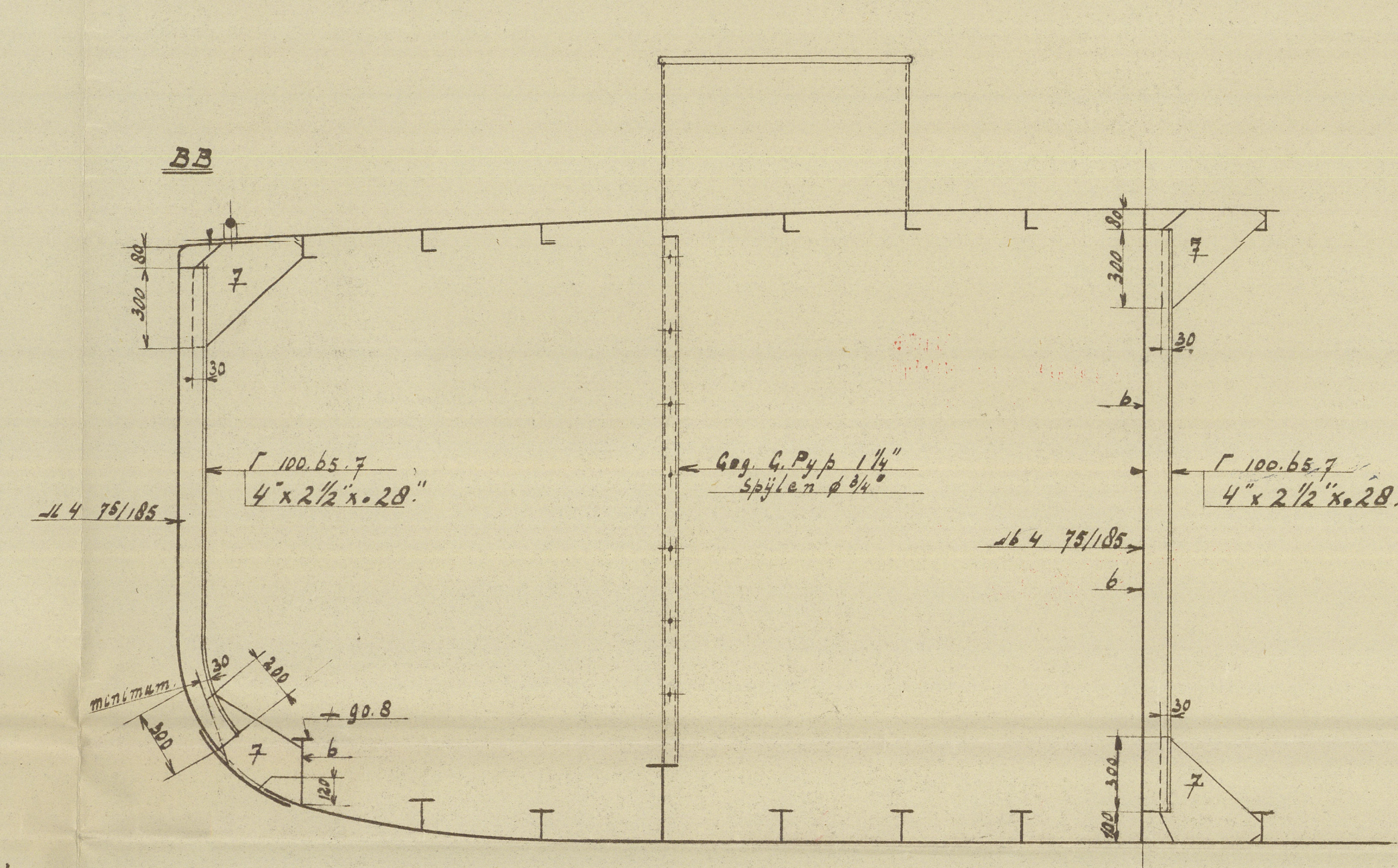
Doorsnede Spt 61.



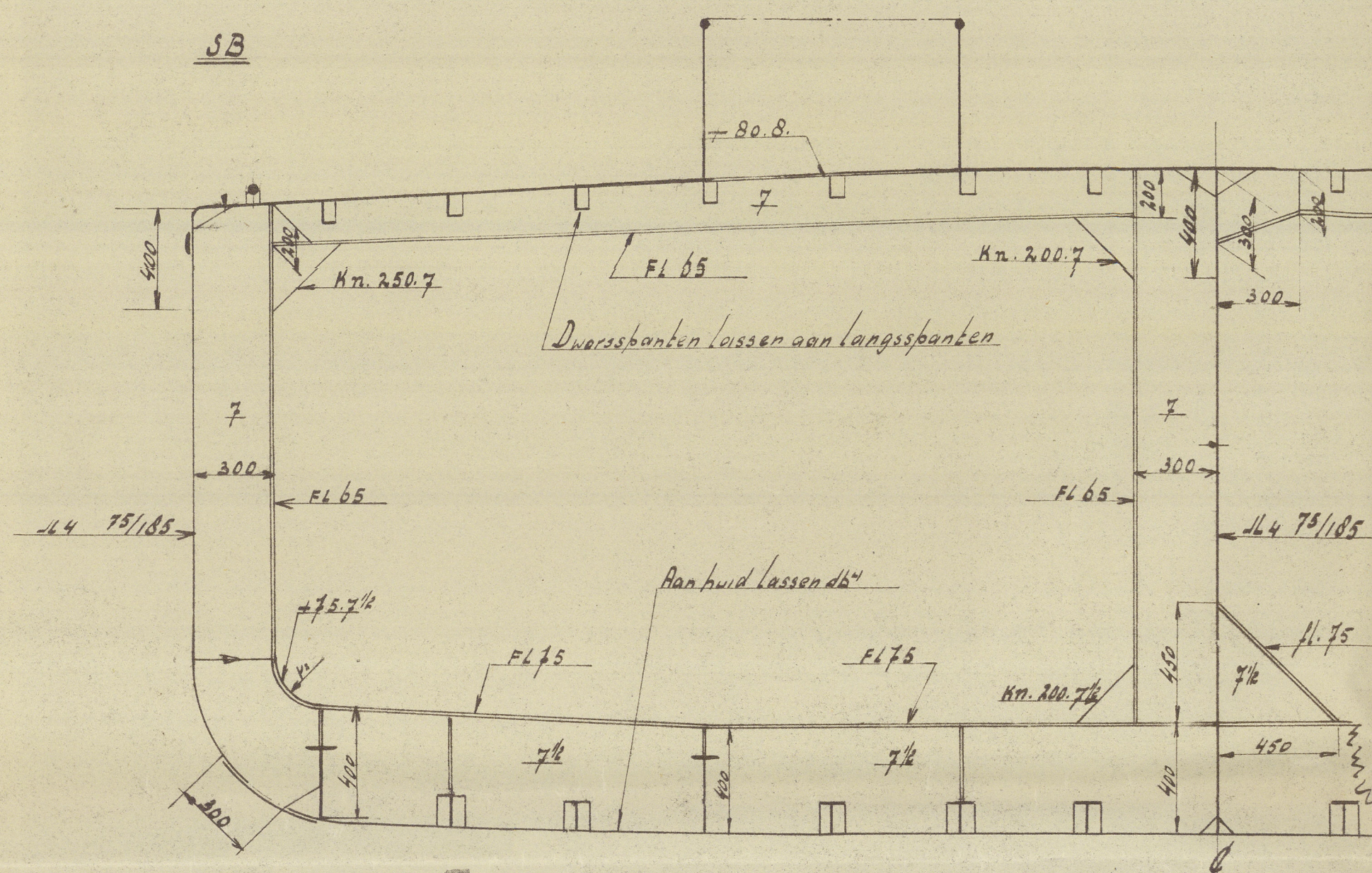
Doorsnede Spt 55



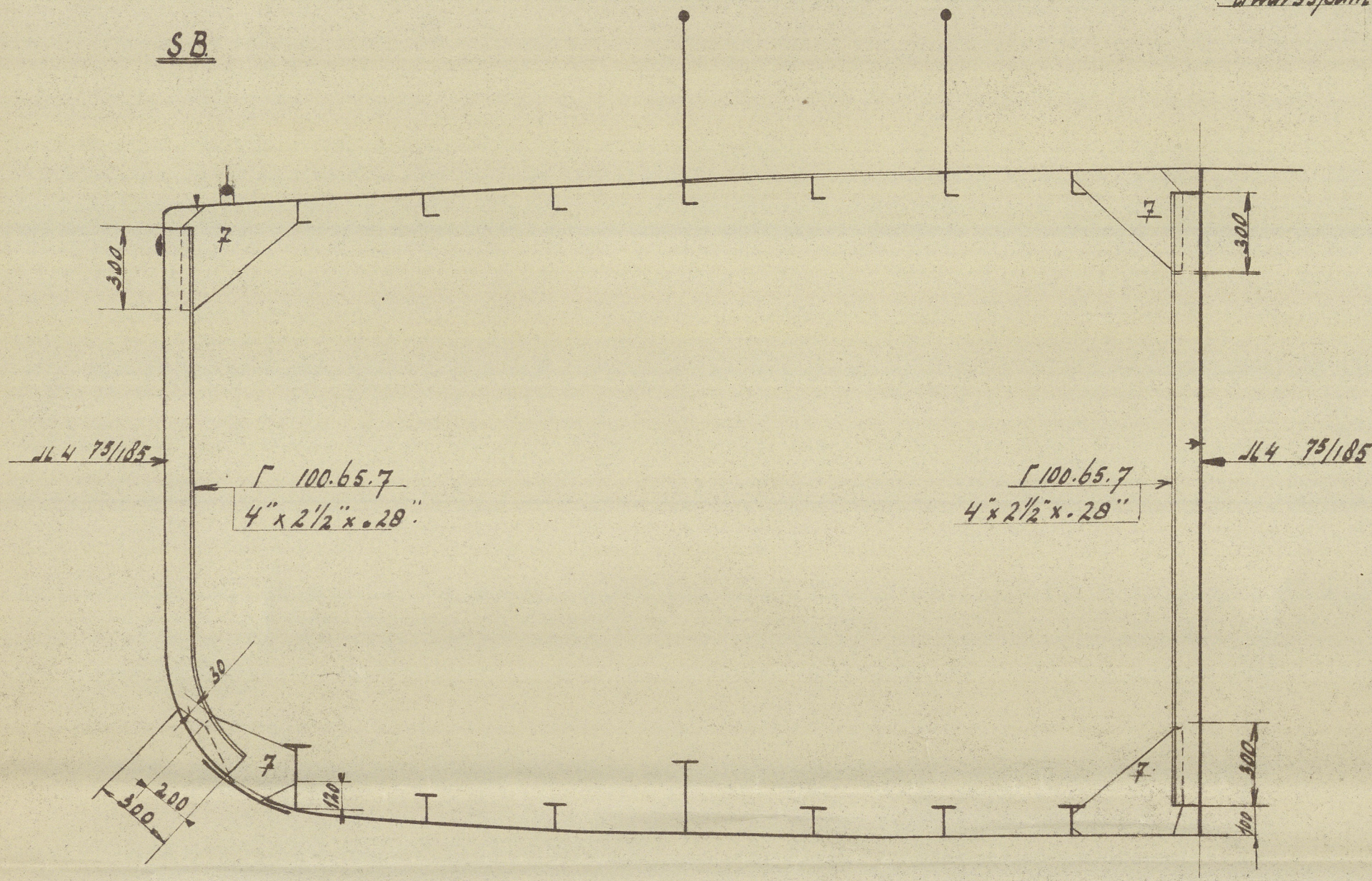
Doorsnede Spt 53



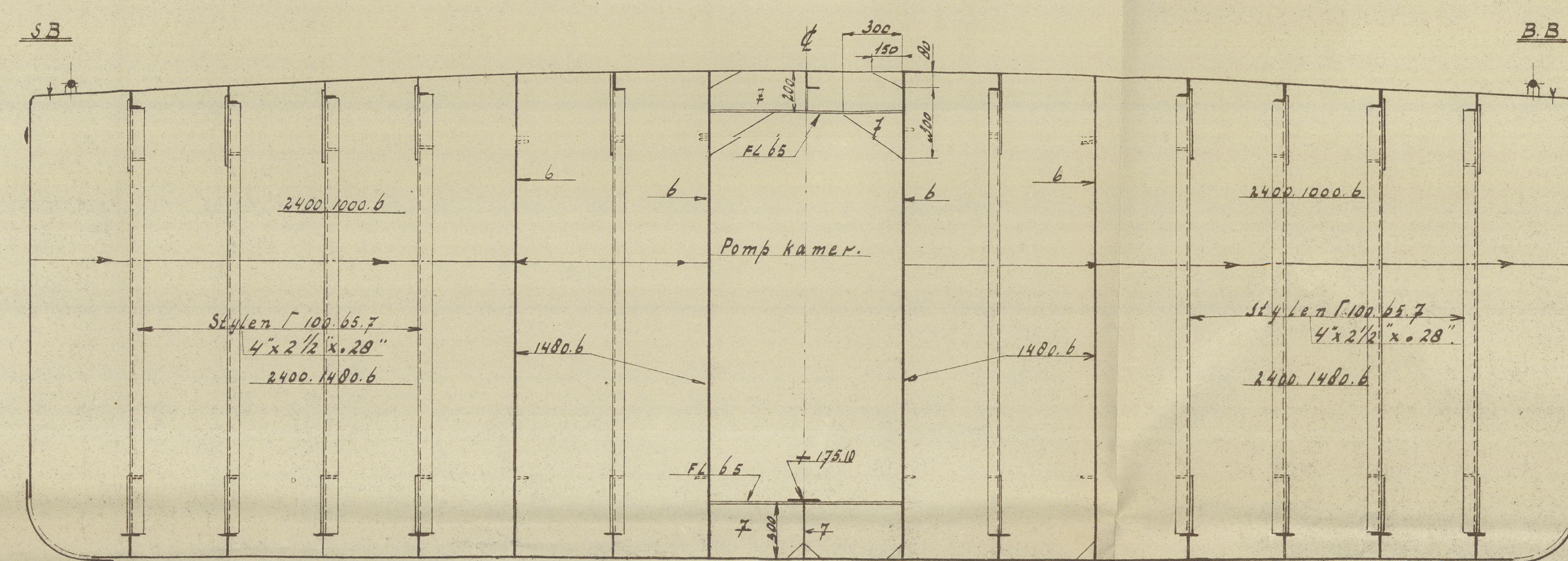
Doorsnede Spt 25



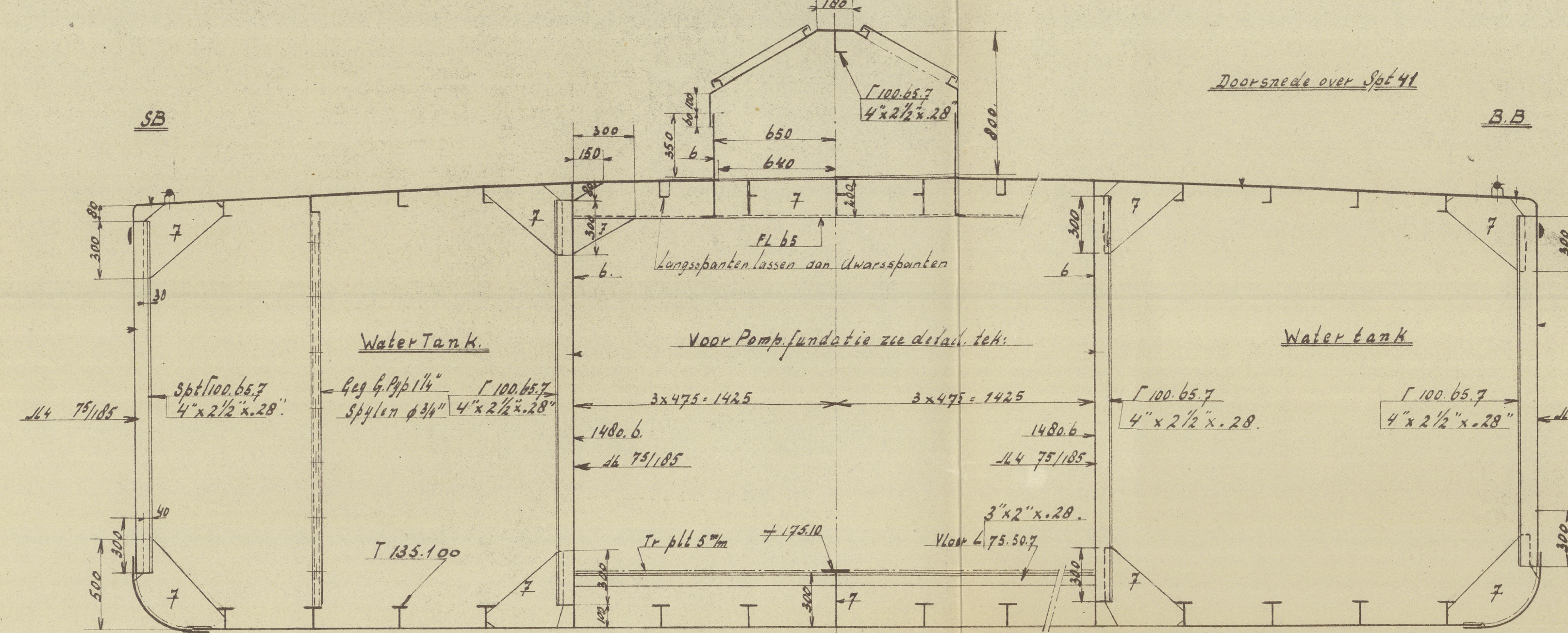
Doorsnede Spt 24.



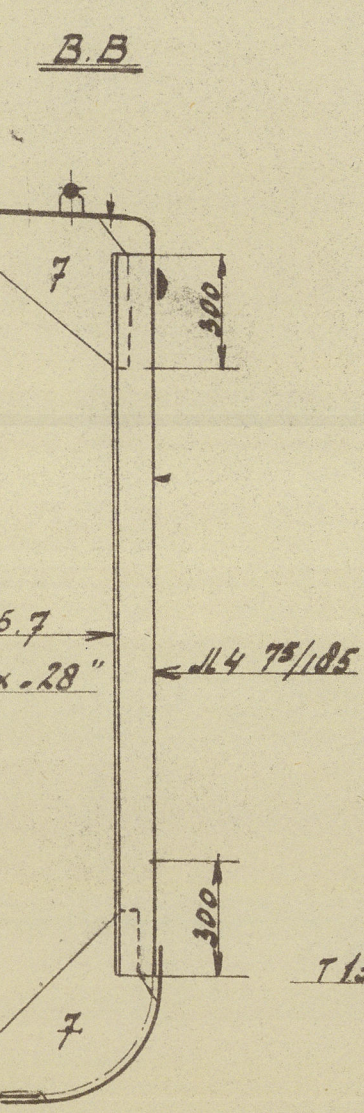
Doorsnede over Spt 35 met W.D schotten



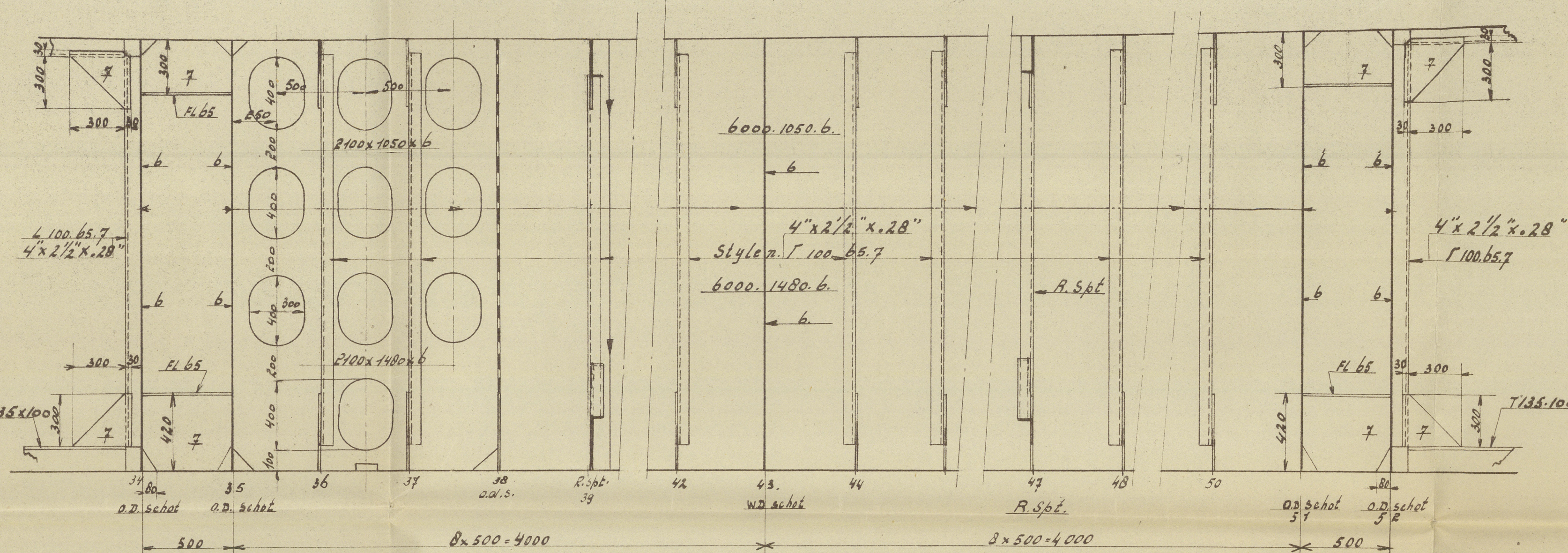
Doorsnede over Spt 44



Doorsnede over Spt 41

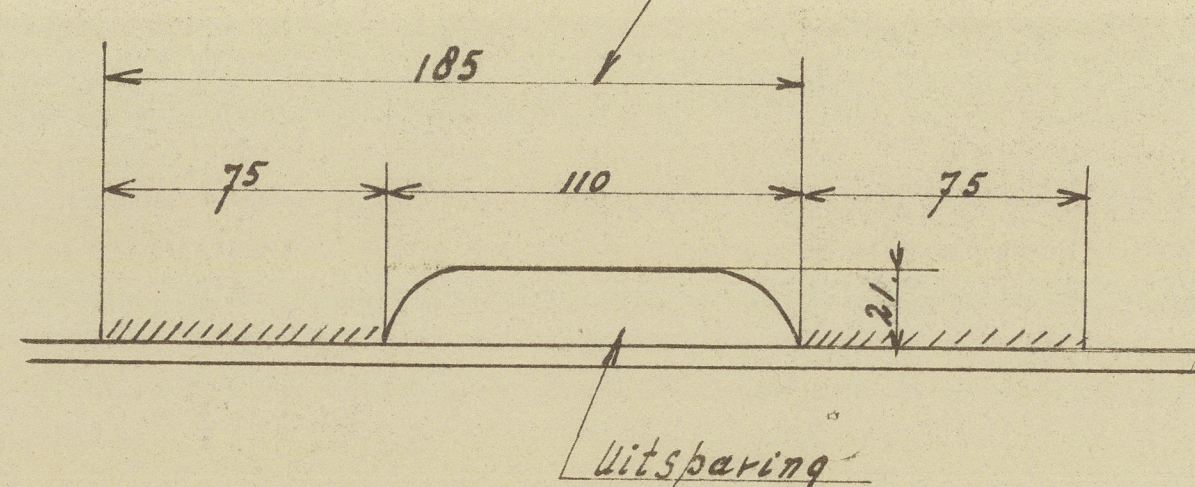


Doorsnede op Langsschot WaterTank SBzij

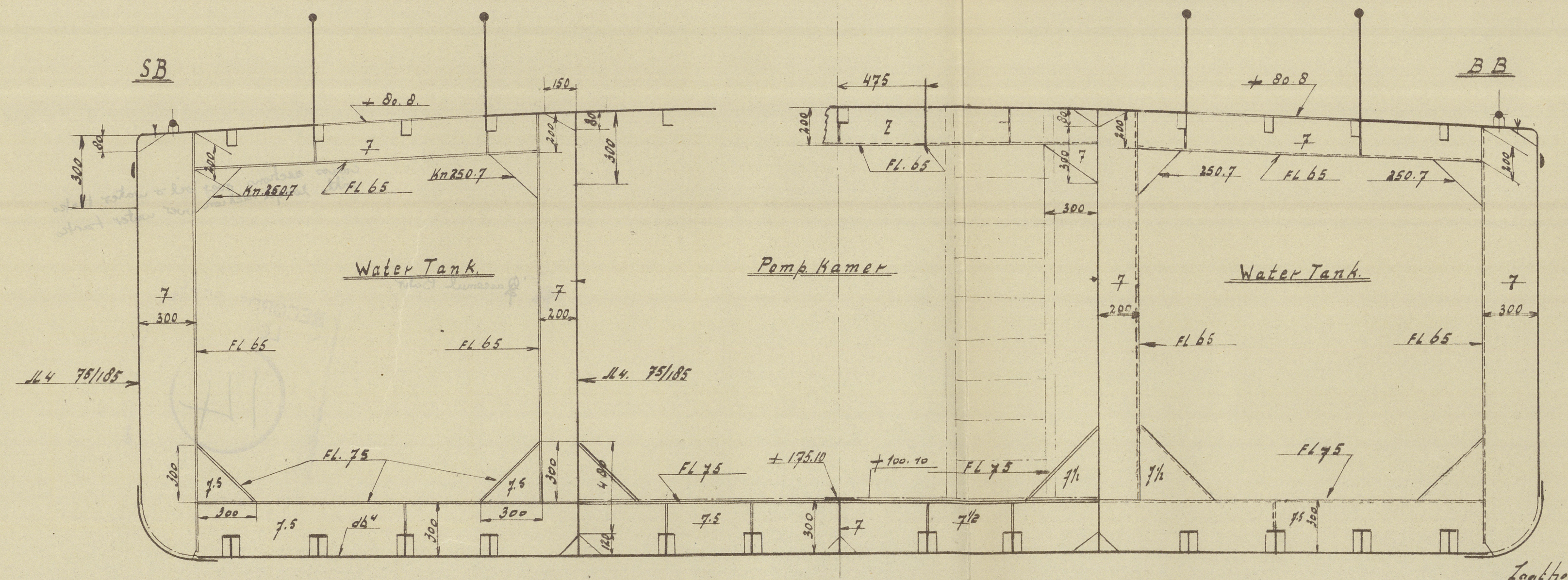


Cargo tanks tested 2 feet head above deck.

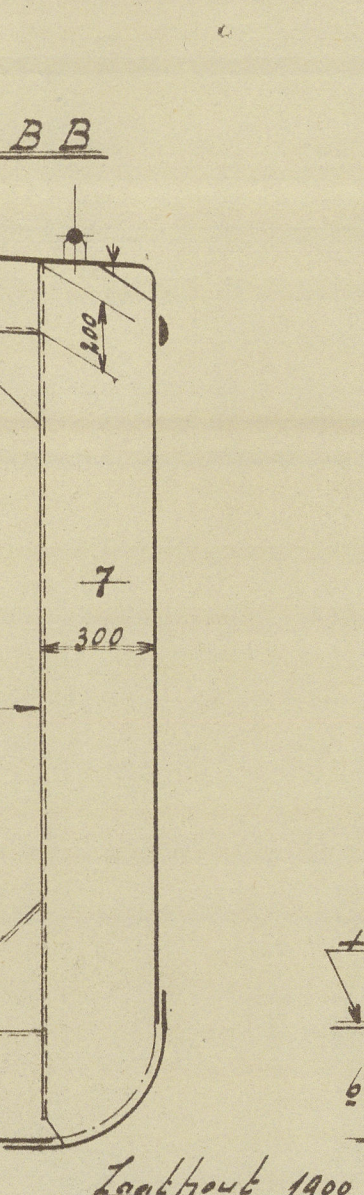
kaswerk voor WD en O.D.
 Dwars-en langschotten doorlopend 44
 Alle schelstijlen 44 75/185 over de einden
 300 lang doorlopend 44
 knieën rondom 44 35
 Spanten 44 75/185 over de einden zoals
 aangegeven doorlopend 44
 Boom spanten gelijk aan. Spanten
 Dek balken 44 75/185
 44 75/185 betekent



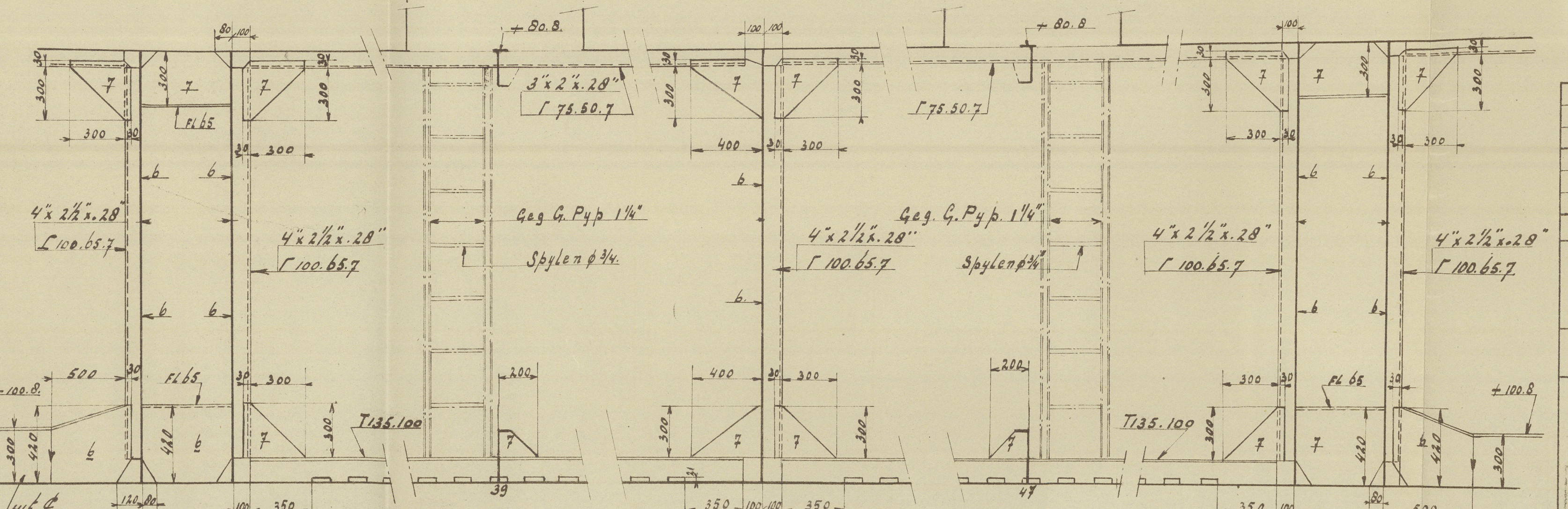
Doorsnede over Spt 39



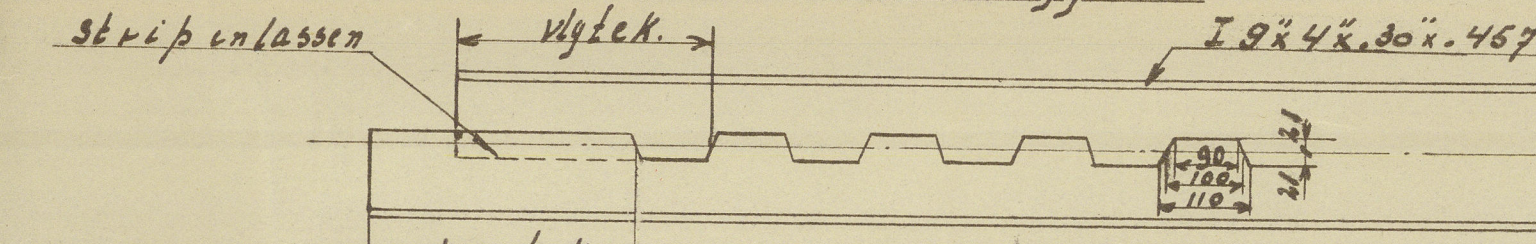
Doorsnede over Spt 47



Doorsnede 2375 uit Mid.schip SB 24 naar Mid.gezien

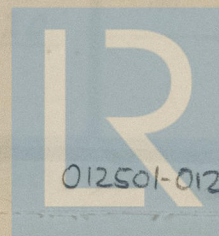
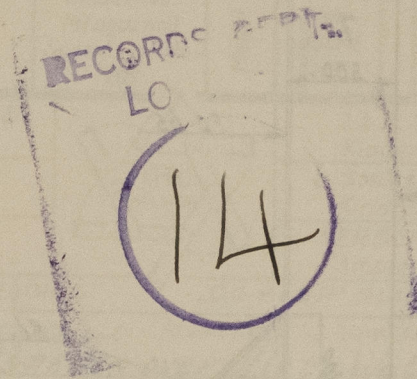


Detail. Vlak leggers

[illegible]

cross sections over oil & water tanks
with longh section over water tanks

★ 'Qaseemul Bahr.'



© 2021

Lloyd's Register
Foundation

012501-012502-0247