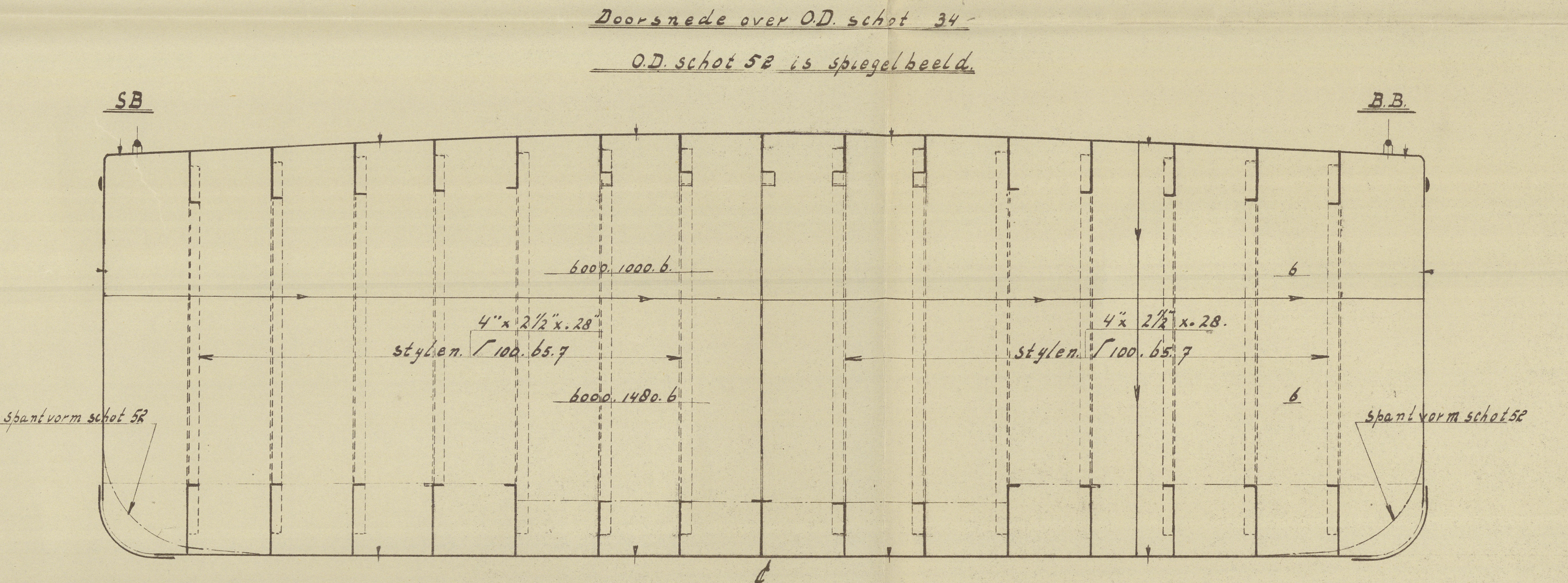
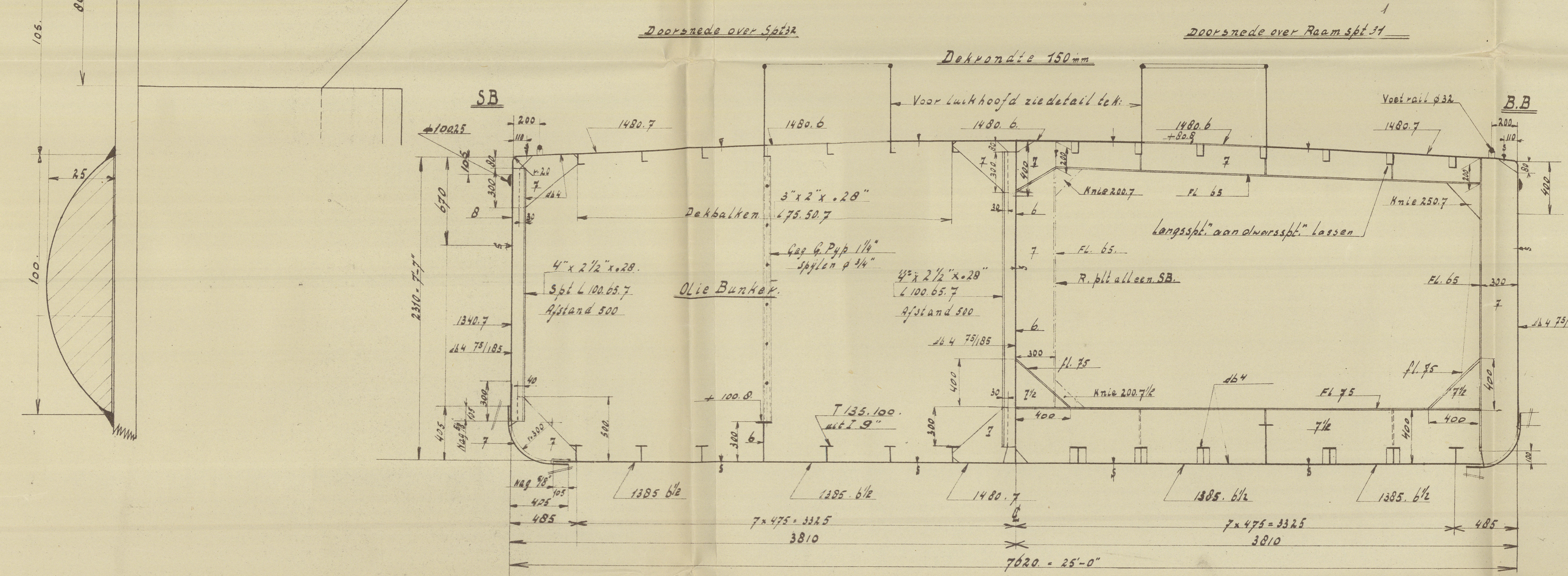
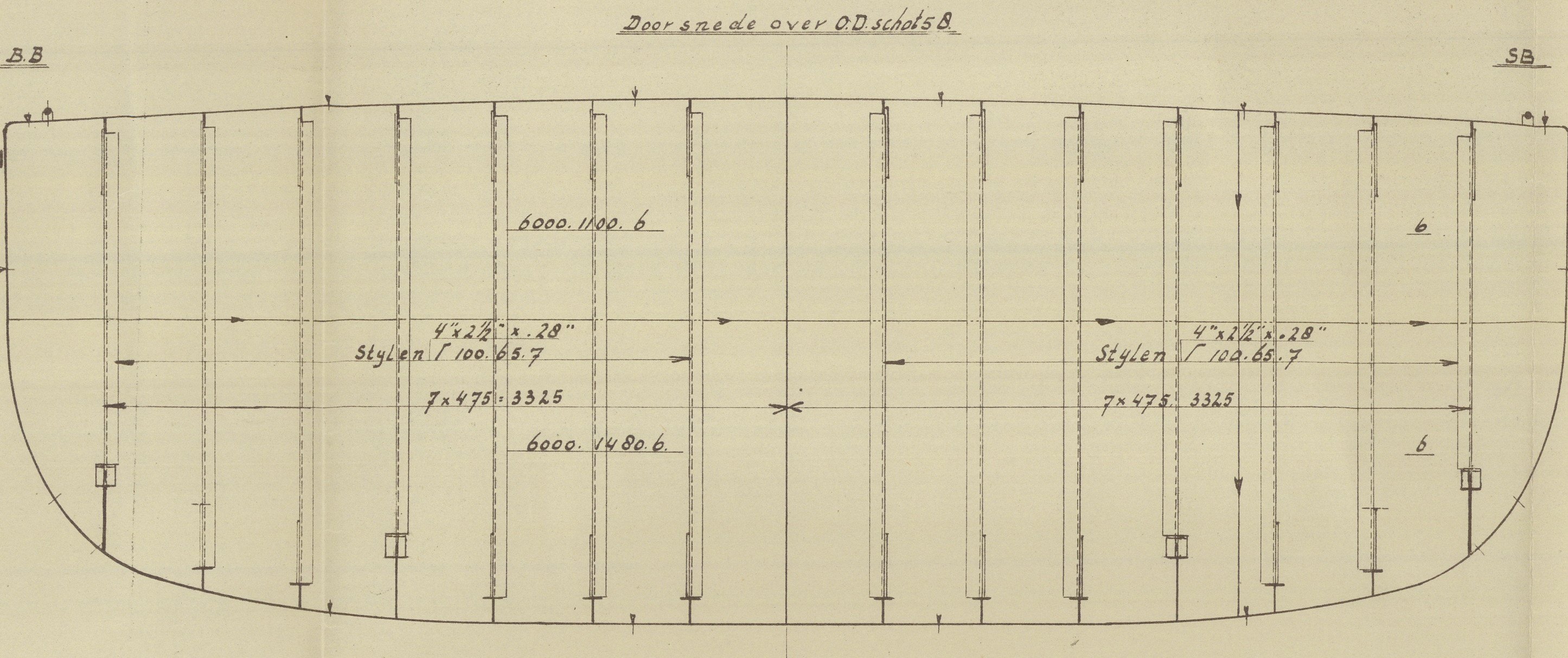
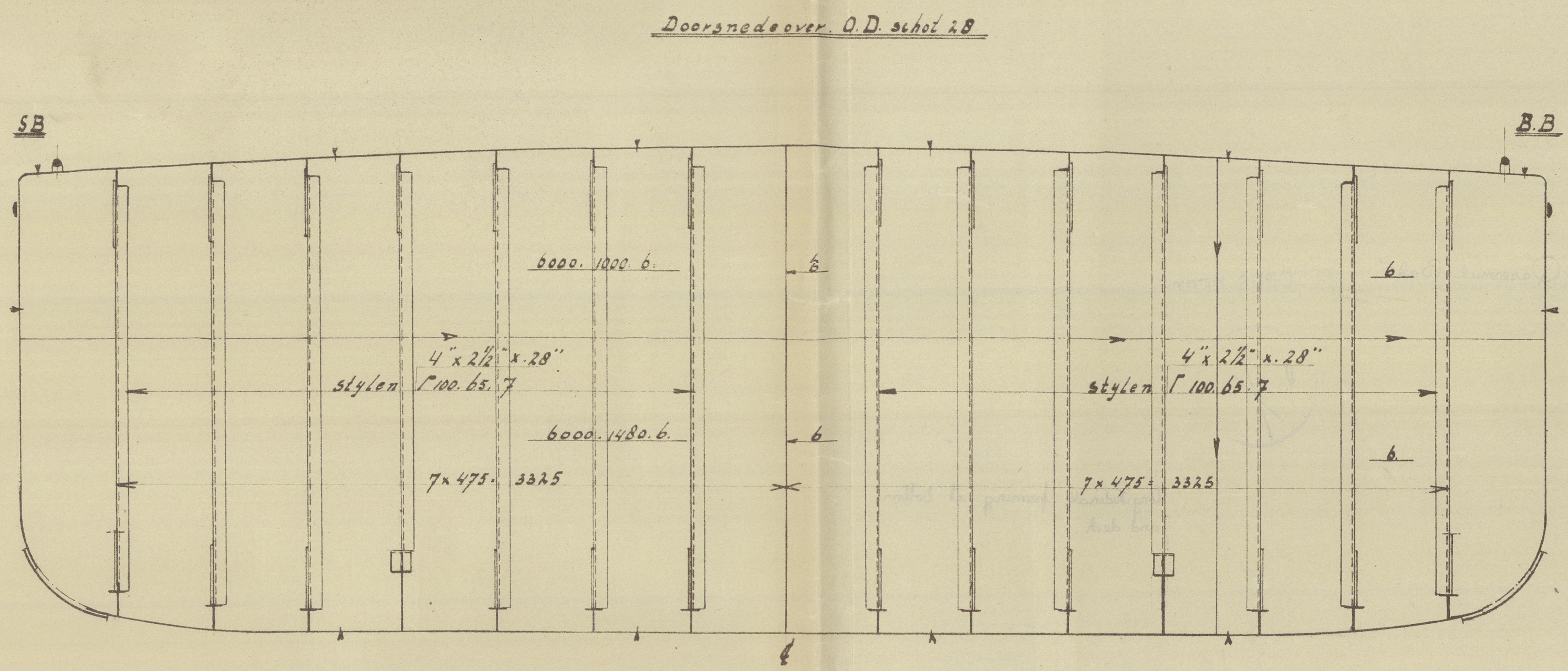


Hoofdmetingen:  
 Lengte op dek 40,55 m 118' 0"  
 Lengte tussen LL 38 m 118' 0"  
 Breedte 7,62 m 25' 0"  
 Holte 1,21 m 3' 7 1/2"  
 Diepgang in zeel water 1,81 m 6' 0"  
 Deadweight 250 ton (a 1000 kg)  
 100 ton olie  
 50 " water  
 Snelheid geladen 7 knots

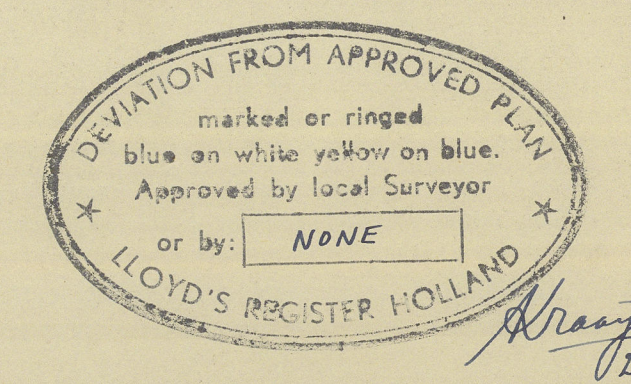
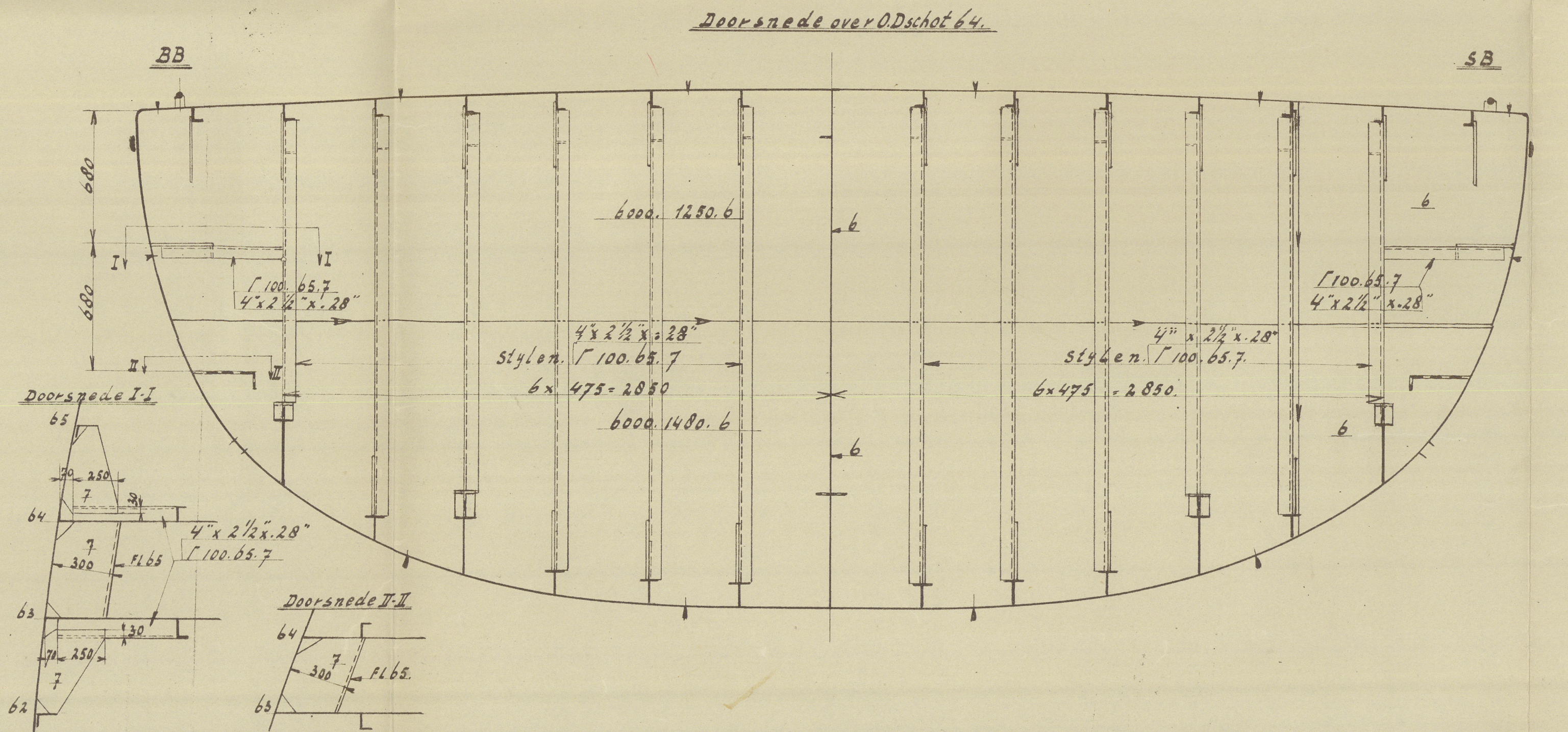
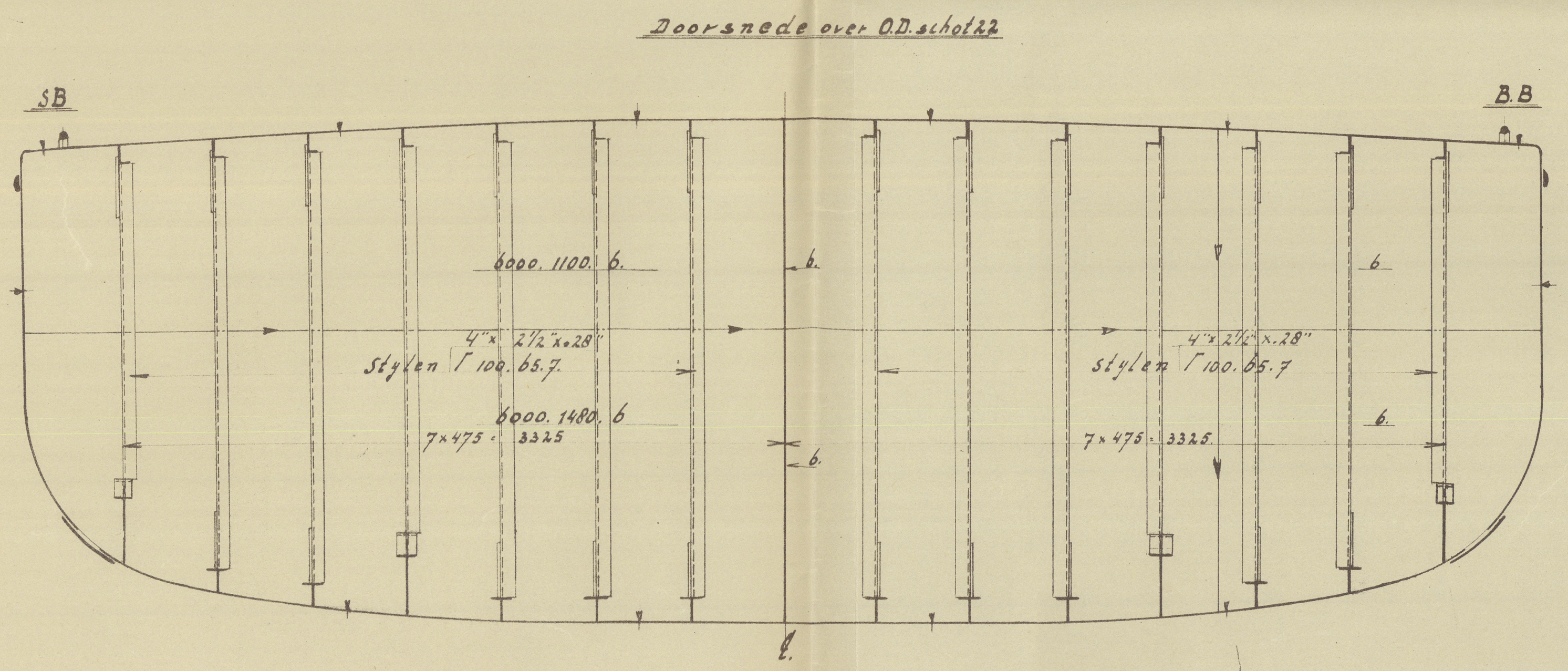


Constructie 1/2 schip is gecombineerd  
 Langs en dwarsspanten systeem  
 Vanaf schot 22 - schot 64. Vriegenen  
 De balken langsscheeps spanten dwarscheeps  
 In voor en achterschip Vriegenen, spanten en  
 balken dwarscheeps

Uitrusting  
 2 Danforth stokloze ankers a 220 kg  
 1 Stroomanker a 76 kg  
 3 x 45 fathoms 1/4" Damkettling  
 1 Staaldraad 1/4" Lang 75 m  
 1 " 1/2" " 50 "  
 1 " 3/4" " 100 "



Voor Laswerk zie opmerking tek 711199.



Class B1 barge  
 Carrying oil in bulk F.P. above 100°F  
 For river service  
 Longitudinal framing at bottom and deck

BELONGS TO  
 ROTTERDAM REPORT No. 66867 A

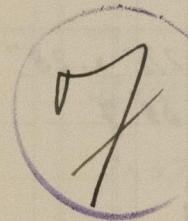
Aantal	Stuk	Benaming	Mat.	Model No. (Magazijn)	Spec. No. BB	Stand- daard tek.	Netto kg v. 1 x afw.	Opmerk.
1	1	WERF CONRAD WERF GUSTO Schiedam "DE KLOP" Siedrecht	1/2" x 2 1/2" x 28"	1/2" x 2 1/2" x 28"	1/2" x 2 1/2" x 28"	1/2" x 2 1/2" x 28"	1/2" x 2 1/2" x 28"	Overgenomen van Zie tekening
1	1	WERF CONRAD WERF GUSTO Schiedam "DE KLOP" Siedrecht	1/2" x 2 1/2" x 28"	1/2" x 2 1/2" x 28"	1/2" x 2 1/2" x 28"	1/2" x 2 1/2" x 28"	1/2" x 2 1/2" x 28"	Overgenomen van Zie tekening
1	1	WERF CONRAD WERF GUSTO Schiedam "DE KLOP" Siedrecht	1/2" x 2 1/2" x 28"	1/2" x 2 1/2" x 28"	1/2" x 2 1/2" x 28"	1/2" x 2 1/2" x 28"	1/2" x 2 1/2" x 28"	Overgenomen van Zie tekening
1	1	WERF CONRAD WERF GUSTO Schiedam "DE KLOP" Siedrecht	1/2" x 2 1/2" x 28"	1/2" x 2 1/2" x 28"	1/2" x 2 1/2" x 28"	1/2" x 2 1/2" x 28"	1/2" x 2 1/2" x 28"	Overgenomen van Zie tekening
1	1	WERF CONRAD WERF GUSTO Schiedam "DE KLOP" Siedrecht	1/2" x 2 1/2" x 28"	1/2" x 2 1/2" x 28"	1/2" x 2 1/2" x 28"	1/2" x 2 1/2" x 28"	1/2" x 2 1/2" x 28"	Overgenomen van Zie tekening
1	1	WERF CONRAD WERF GUSTO Schiedam "DE KLOP" Siedrecht	1/2" x 2 1/2" x 28"	1/2" x 2 1/2" x 28"	1/2" x 2 1/2" x 28"	1/2" x 2 1/2" x 28"	1/2" x 2 1/2" x 28"	Overgenomen van Zie tekening
1	1	WERF CONRAD WERF GUSTO Schiedam "DE KLOP" Siedrecht	1/2" x 2 1/2" x 28"	1/2" x 2 1/2" x 28"	1/2" x 2 1/2" x 28"	1/2" x 2 1/2" x 28"	1/2" x 2 1/2" x 28"	Overgenomen van Zie tekening
1	1	WERF CONRAD WERF GUSTO Schiedam "DE KLOP" Siedrecht	1/2" x 2 1/2" x 28"	1/2" x 2 1/2" x 28"	1/2" x 2 1/2" x 28"	1/2" x 2 1/2" x 28"	1/2" x 2 1/2" x 28"	Overgenomen van Zie tekening
1	1	WERF CONRAD WERF GUSTO Schiedam "DE KLOP" Siedrecht	1/2" x 2 1/2" x 28"	1/2" x 2 1/2" x 28"	1/2" x 2 1/2" x 28"	1/2" x 2 1/2" x 28"	1/2" x 2 1/2" x 28"	Overgenomen van Zie tekening



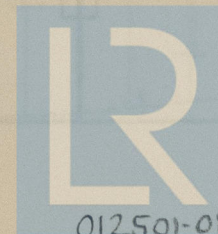


Qaseemul Bahr'

RECORDS DEPT



Longitudinal framing at bottom  
and deck.



© 2021

Lloyd's Register  
Foundation

012501-012507-0246