

26 AUG 1953

Index No. ~~43643~~  
(For London Office only)

# Lloyd's Register of Shipping.

## SURVEYS FOR FREEBOARD.

(CONDITIONS OF ASSIGNMENT.)

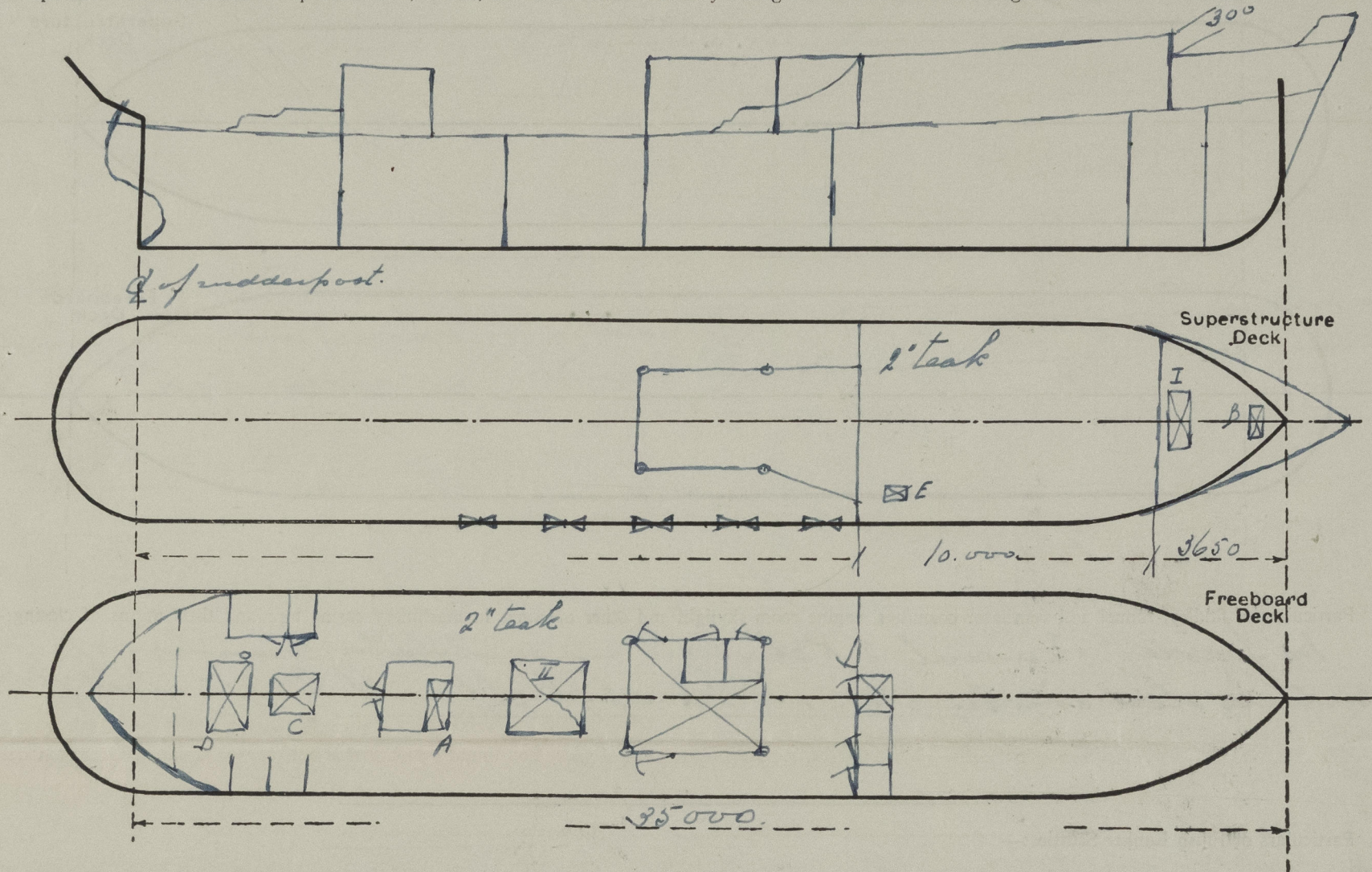
43942

Ship's Name *m.s. Blekok.*Port of Survey *Batavia*

Official Number

Surveyor's Signature *J.H. F. ...*Nationality and Port of Registry *Indonesia*  
*Batavia*Date of Survey *January 1953*

Disposition and dimensions of superstructures, trunks, deckhouses and machinery casings to be inserted in the diagrams and tabular statement:—



Particulars of Superstructures, Trunks, Casings, Deckhouses

	Coaming	Plating	Stiffeners	Spacing	End Attachments of Stiffeners	Size of Openings	Height of Sills	Height of Casings
Poop Bulkhead								
Raised Quarter Deck Bulkhead								
Bridge, After Bulkhead	7	5 1/2	565.50.6 1/2	550	none	1400 630	610	2100
Bridge, Forward Bulkhead	7	7	565.50.6 1/2	600-800	E.W.	none	✓	1800
Forecastle Bulkhead								
Trunk, Aft								
Trunk, Forward								
Exposed Machinery Casings on Freeboard or Raised Quarter Decks	7	5 1/2	565.50.6 1/2	500	knives only	1400. 600	610	2100
Exposed Machinery Casings on Superstructure Decks								
Machinery Casings within Superstructures not fitted with Class I Closing Appliances								
Deckhouses on Flush Deck Ships								

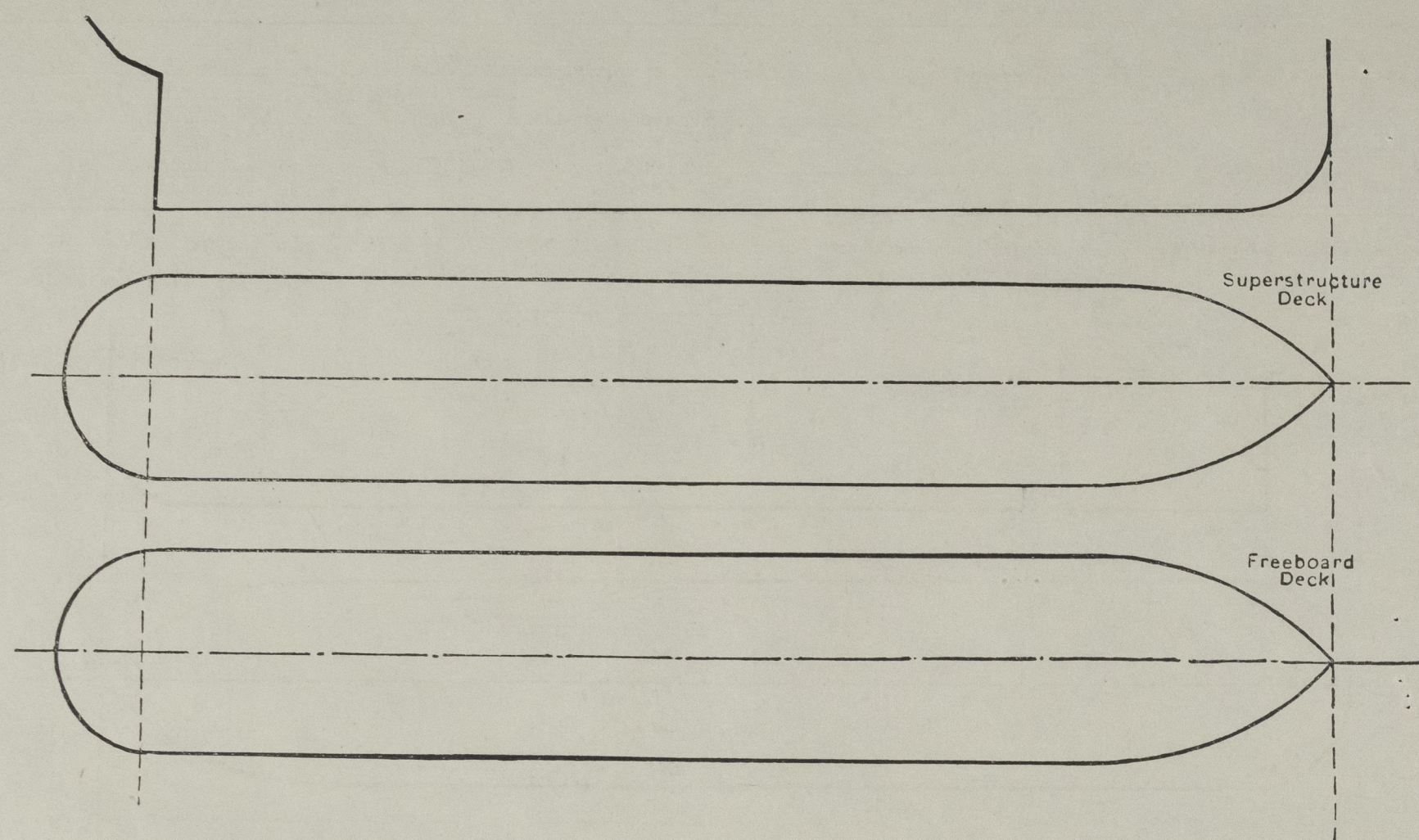
Particulars of Closing Appliances (state if capable of being manipulated from both sides)

Poop Bulkhead	
Raised Quarter Deck Bulkhead	
Bridge, After Bulkhead	2 WT hinges steel doors, operable from both sides
Bridge, Forward Bulkhead	
Forecastle Bulkhead	none ✓
Exposed Machinery Casings on Freeboard or Raised Quarter Decks	2 WT hinges steel doors, operable from both sides ✓
Exposed Machinery Casings on Superstructure Decks	
Machinery Casings within Superstructures not fitted with Class I Closing Appliances	
Deckhouses on Flush Deck Ships	



# PARTICULARS OF PROTECTION TO OPENINGS, ETC.

The following diagrams should be used to indicate the positions of cargo and coaling hatchways, gangway, cargo and coaling ports, ventilators, companionways, etc., which would affect the seaworthiness of the ship:—



Particulars of fiddle, funnel and ventilator coamings, engine room skylight and other openings in machinery casing tops and their means of closing:—

no fiddle. Funnel, E.R. skylight and ventilator coamings of strong steel construction. E.R. skylight with hinged steel flaps.

Particulars of Flush Bunker Scuttles:—

Particulars of Companionways:—

on freeboard deck strong steel deckhouse aft giving access to accommodation aft under freeboard deck with hinged steel W.T. door, operable from both sides. Sill 610 mm (A) ✓

Particulars of Ventilators in exposed positions on freeboard and superstructure decks:—

on forecastle deck: 2 vent coamings 915 x 830 plate 8 1/2 to 10 mm under forecastle / 2 ports on cargo hold 460 x 150 with wooden plugs & canvas covers  
on bridge deck: 1 vent coaming 400 x 400, 200 high 5 mm plate with el. fan bolted on coaming  
on freeboard deck: 2 vent coamings forming part of eng. casing plate 10 mm, 7 & 5 coaming up to 760 above casing deck leading to eng. room.  
2 vents on derrick ports sufficiently supported by E.R. casing, suff. high above deck 9250. plate 14 leading to cargo hold.  
1 vent coaming 965 x 830 plate 8 1/2 suff. supported leading to provision store.  
wooden plugs and canvas covers provided.

Particulars of Air Pipes in exposed positions on freeboard, raised quarter, or superstructure decks:—

on forecastle deck and bridge deck 460 mm high ✓  
on freeboard deck 920 mm high ✓  
air pipes on water tanks provided with wooden plugs and canvas covers  
" " oil tanks " " patent gas caps and canvas covers

## Particulars of Gangway Cargo and Coaling Ports:—

Particulars of Scuppers and Sanitary Discharge Pipes:—

on forecastle deck, each side one scupper pipe 76 x 8 through shell plating above waterline below freeboard deck  
on main deck each side 4 scuppers 76 x 8 through shell plating above waterline below freeboard deck  
All sanitary discharges leading overboard through bronze S.D.H.R. valves with indicators  
All sanitary spaces situated above freeboard deck

Particulars of Side Scuttles:—

below freeboard deck of fixed type 12" of bronze frames hinged steel deadlight  
above freeboard deck 12" of hinged type, bronze frames with hinged steel deadlight

Vertical distance of Sill of lowest Side Scuttle above top of keel 2470 mm (4100 mm forward of 1/4 L) ✓

Particulars of Guard Rails:—

on forecastle deck steel bulwarks 300 x 6 mm railing bar 100. 65. 7 suff. supported  
Total height 960 mm. ✓ 13  
on bridge deck open railing 2 rods of strong construction 1050 mm high.  
on main deck steel bulwarks frame 7 - bridge 1100 x 6 railing bar 100. 65. 7 suff. supported  
aft frame 7 550 x 6 railing bar 100. 65. 7 strong 2nd railing on ft. Total height 1100.

Particulars of Gangways, Lifelines, etc.:—

Provisions for rigging lifelines provided

## Particulars of Freeing Arrangements

	Length of Bulwark	Height of Bulwark	Size of Freeing Ports	Number each side	Area each side	Rule area each side
After Well Forecastle deck	5400	300	200 x 150 hinged pipe 3" scupper pipe	1 ✓		
Forward Well Freeboard deck	18150 ✓ 4500	1100 ✓ 550	1250 x 200 3" scupper pipe	5 ✓ 4	1.25 M <sup>2</sup>	1.158 M <sup>2</sup>

State position of each freeing port — After Well: — forecastle deck 155 above deck  
(F. and A. position and height above deck edge) Forward Well: — Freeboard deck 165 ✓

State whether the freeing ports are fitted with shutters, bars, or rails, and give particulars of such:— 3 bars horizontal

Additional area where sheer is less than standard.



PARTICULARS OF PROTECTION TO OPENINGS, ETC.

HATCHWAYS ON FREEBOARD AND SUPERSTRUCTURE DECKS									
Description of Hatchway		Forecastle deck		Freeboard deck					
Dimensions of Hatchway		12'10" x 12'10"		20'0" x 18'0"		SIZE			
COAMINGS	Height above Deck	6'10"		7'5"					
	Thickness { Sides	7"		7"					
	Ends	7"		7"					
	Stiffeners	7"		7"					
	Brackets, Stays	✓		✓					
HATCH BEAMS	Number	/		/					
	Spacing	/		/					
	Scantling and Sketch	/		/					
	Bearing Surface	/		/					
FORE AND AFTERS	Number	/		/					
	Spacing	/		/					
	Unsupported Lengths	/		/					
	Scantling* and Sketch	/		/					
	Bearing Surface	/		/					
HATCH COVERS	Material	/		/					
	Thickness	/		/					
	How fitted	/		/					
	Bearing Surface	/		/					
Spacing of Cleats		/		/					
Number of Tarpaulins		/		/					
*Are wood fore and afters steel shod at all bearing surfaces?		Yes		Yes					
Are battens and wedges efficient and in good condition?		Yes		Yes					
Are tarpaulins in good condition and in accordance with rule requirements?		Yes		Yes					
Are lashings provided in accordance with rule requirements?		Yes		Yes					

Particulars of any special features:—

On Forecastle deck one hatch leading to store 550 x 457 coaming 180 x 7 linged steel WT hatch 6 m.m (B.)

On freeboard deck strong steel skylight on accommodation aft 660 high 7 m.m plate with linged steel WT flaps with bronze bulldozers (R.)

" " one hatch on steering room 200 x 900 coaming 450 x 7 with linged steel WT hatch (R.)

In H-2 hatch coaming 6 bronze side cutters 12" of fixed type with linged steel deadlights underside 125 m.m above deck.

Endorsement at first survey and at surveys for renewal of Certificate:—

The fittings and appliances are in accordance with the particulars shown on this form (or as now modified) and are in good condition.

