

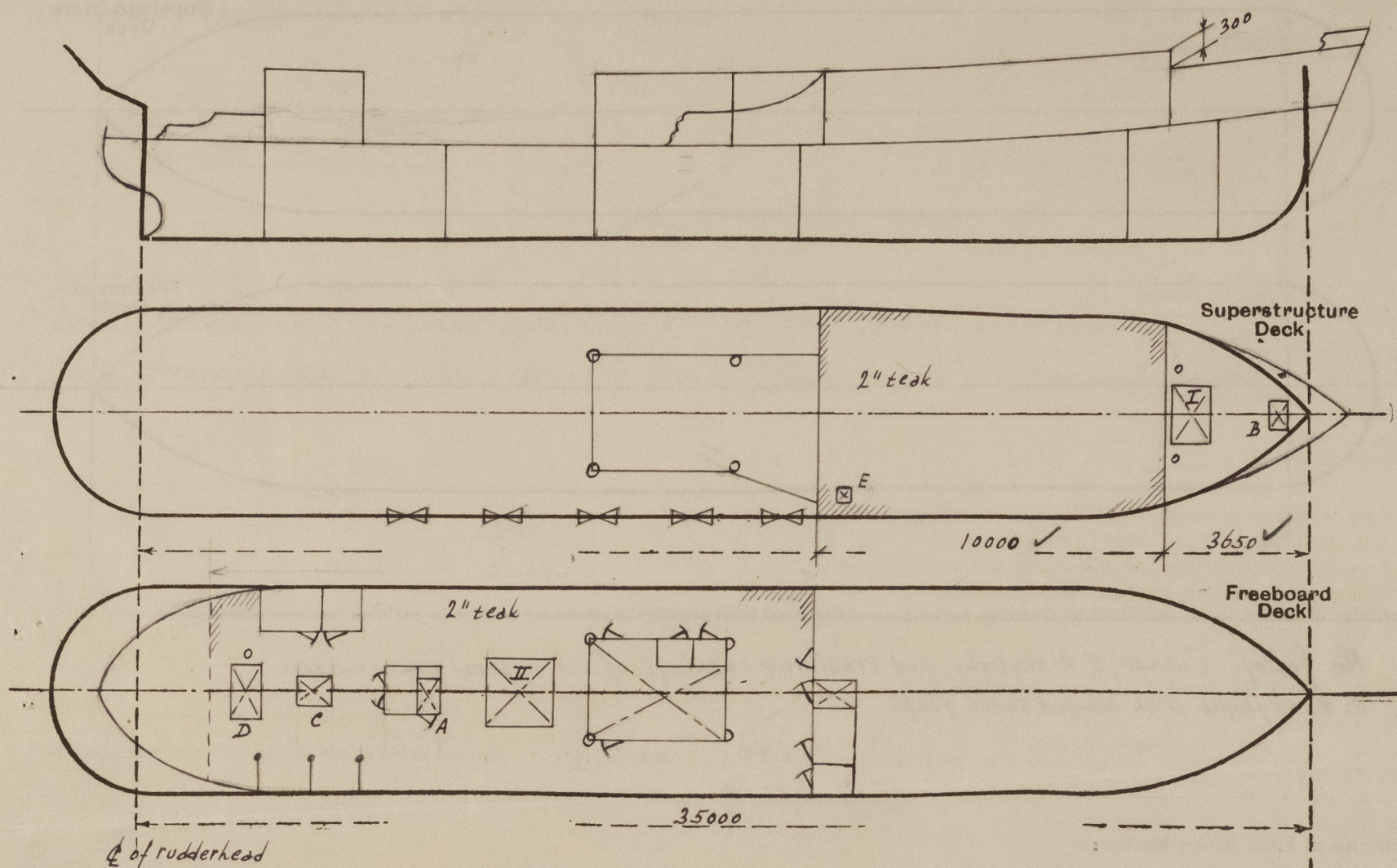
Lloyd's Register of Shipping.

Index No.
(For London Office only).SURVEYS FOR FREEBOARD.
(CONDITIONS OF ASSIGNMENT.)

11 AUG 1952

Ship's Name *BANGO*Port of Survey *Rotterdam*Official Number *V*Surveyor's Signature *Kraayabriel*Nationality and Port of Registry *Indonesian Djakarta*Date of Survey *July - August 1952*

Disposition and dimensions of superstructures, trunks, deckhouses and machinery casings to be inserted in the diagrams and tabular statement:—



Particulars of Superstructures, Trunks, Casings, Deckhouses.

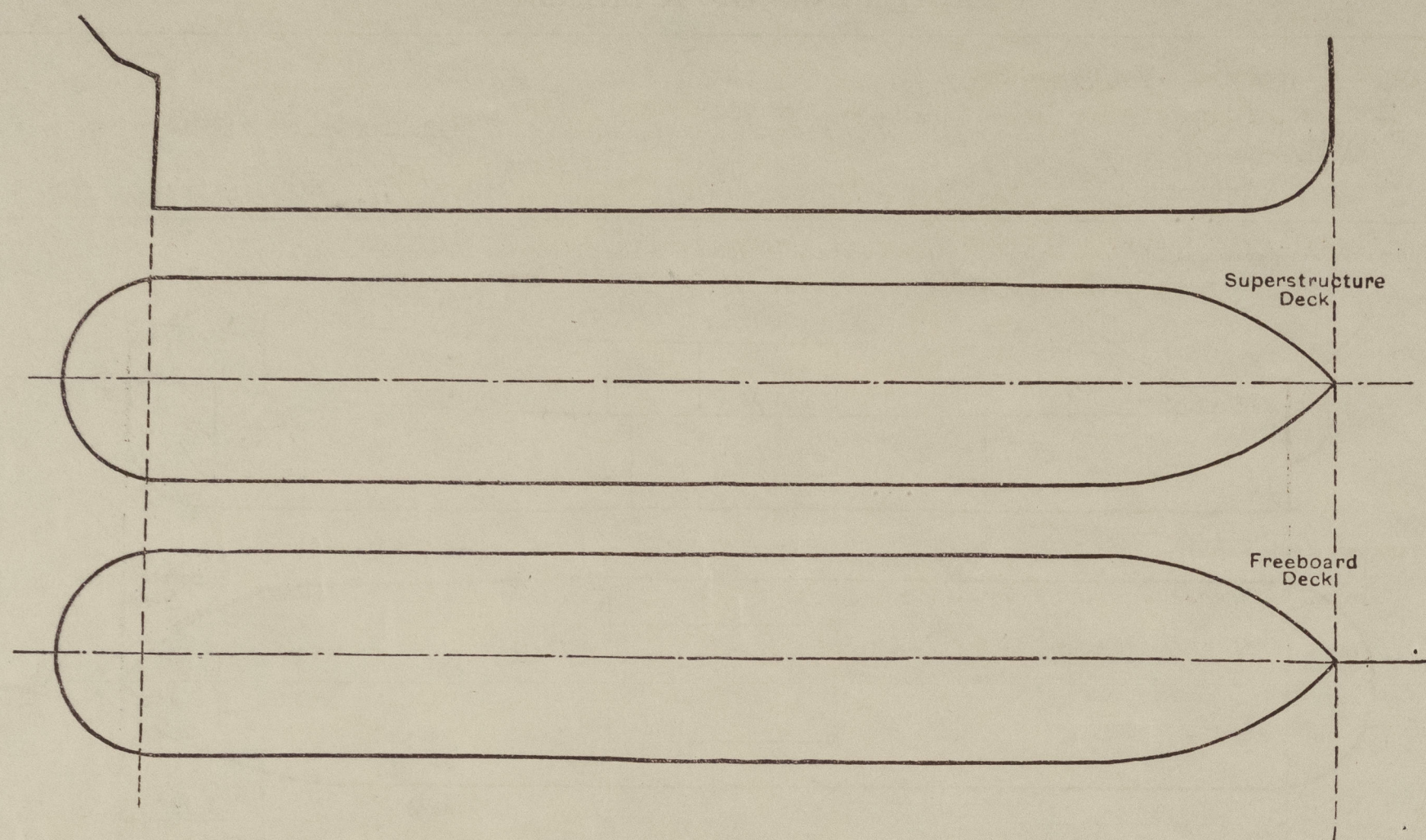
	Coaming	Plating	Stiffeners	Spacing	End Attachments of Stiffeners	Size of Openings	Height of Sills	Height of Casings
Poop Bulkhead ...								
Raised Quarter Deck Bulkhead ...								
Bridge, After Bulkhead ...	7 ✓	5 1/2 ✓	I 65.50. 6 1/2 ✓	550 ✓	none ✓	1400. 630	460 ✓	2100
Bridge, Forward Bulkhead ...								
Forecastle Bulkhead ...	7 ✓	7 ✓	I 65.50. 6 1/2 ✓	600-500 ✓	EW ✓	none	✓	1800
Trunk, Aft ...								
Trunk, Forward ...								
Exposed Machinery Casings on Freeboard or Raised Quarter Decks ...	7 ✓	5 1/2 ✓	I 65.50. 6 1/2 ✓	500 ✓	knees on top ✓	1400. 600	460 ✓	2100
Exposed Machinery Casings on Superstructure Decks ...								
Machinery Casings within Superstructures not fitted with Class I Closing Appliances ...								
Deckhouses on Flush Deck Ships ...								

Particulars of Closing Appliances (state if capable of being manipulated from both sides).

Poop Bulkhead ...	
Raised Quarter Deck Bulkhead ...	
Bridge, After Bulkhead ...	2 WT hinged steel doors, operable both sides. ✓
Bridge, Forward Bulkhead ...	
Forecastle Bulkhead ...	none fitted ✓
Exposed Machinery Casings on Freeboard or Raised Quarter Decks ...	2 WT hinged steel doors, operable both sides. ✓
Exposed Machinery Casings on Superstructure Decks ...	
Machinery Casings within Superstructures not fitted with Class I Closing Appliances ...	
Deckhouses on Flush Deck Ships ...	

PARTICULARS OF PROTECTION TO OPENINGS, ETC.

The following diagrams should be used to indicate the positions of cargo and coaling hatchways, gangway, cargo and coaling ports, ventilators, companionways, etc., which would affect the seaworthiness of the ship:—



Particulars of fiddle, funnel and ventilator coamings, engine room skylight and other openings in machinery casing tops and their means of closing:—

No fiddle. Funnel, E.R. skylight and ventilator coamings of strong steel construction.
E.R. skylight with hinged steel flaps. ✓

Particulars of Flush Bunker Scuttles:—

none fitted. ✓

Particulars of Companionways:—

On maindeck strong steel deckhouse aft, giving access to accommodation aft, under maindeck, with hinged steel WT door, operable both sides, sill 460 mm (A) ✓
610

Particulars of Ventilators in exposed positions on freeboard and superstructure decks:—

On forecastledeck: 2 vent. coamings 915 x 300, plate 8 1/2, to store under forecastledeck.
2 goose-neck vents 460 x 150, to cargo hold, fitted with wood plugs and canvas covers.

On bridgedeck: 1 vent. coaming 400 x 400, 200 high, 5 mm plate, with electric fan direct bolted to coaming and supported by strong foundation welded on deck. Wood sliding cover provided for air intake and canvas cover provided for electric fan. (E) + vent ✓

On freeboarddeck: 2 vent. coamings, forming part of engine casing, plate 10.7 and 5 mm. coaming up to 760 mm above bridgedeck.

2 vents on derrick posts, 250. plate 14. supported by engine casing, sufficiently high. ✓

1 vent coaming 965 x 300. plate 8 1/2. sufficiently supported. ✓

Wooden plugs and canvas covers provided. ✓

Particulars of Air Pipes in exposed positions on freeboard, raised quarter, or superstructure decks:—

On forecastledeck height above deck 460 mm ✓

On bridgedeck " " " 460 mm ✓

On freeboarddeck " " " 920 mm ✓

Air pipes on watertanks provided with wooden plugs and canvas covers. ✓

" on oil tanks " " patent gas caps " " " ✓

Particulars of Gangway Cargo and Coaling Ports:—

Bango.

Particulars of Scuppers and Sanitary Discharge Pipes:—

On forecastledeck each side one scupper pipe 76 x 8 mm thick, through shell plating above waterline below freeboarddeck. ✓

On maindeck each side 4 scupper pipes 76 x 8 mm thick, through shell plating above waterline, below freeboarddeck. ✓

All sanitary discharges leading overboard through bronze SDNR valves fitted with open/shut indication.

All sanitary spaces situated above freeboarddeck. ✓

Particulars of Side Scuttles:—

Below freeboarddeck, of fixed type, 12" 6 bronze frames, hinged steel deadlights. ✓

Above freeboarddeck, of hinged type, 12" 6 bronze frames, hinged steel deadlights. ✓

Vertical distance of Sill of lowest Side Scuttle above top of keel 2470 mm (4100 mm forward of 1/2 L) ✓

Particulars of Guard Rails:—

On forecastledeck steel bulwarks 370 x 6 mm, with bar 100.65.7. suff. supported.
One rod open railing on top. Total height 920 mm. ✓

On bridgedeck 2 rod open railing, 1050 mm high. ✓

On freeboarddeck steel bulwarks frame 7-bridge 1100 x 6 mm, with bar 100.65.7. suff. supported. ✓
from aft-frame 7: 550 x 6 mm with bar 100.65.7. 2 rod open railing on top. Total height 1100 mm. ✓

Particulars of Gangways, Lifelines, etc.:—

Provisions for rigging up lifelines. ✓

Particulars of Freeing Arrangements.

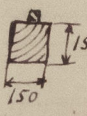
	Length of Bulwark	Height of Bulwark	Size of Freeing Ports	Number each side	Area each side	Rule area each side
After Well Forecastledeck	5400 ✓	300 ✓	200 x 150 mooring pipe 3" scupper pipe	1 1 ✓		
Forward Well Freeboarddeck	18150 ✓ 4500 ✓	1100 ✓ 550 ✓	1250 x 200 3" scupper pipe	5 4 ✓	1.25 M ²	1.158

State position of each freeing port ... (After Well:— forecastledeck 135 above deck
(F. and A. position and height above deck edge) Forward Well:— freeboarddeck 165 above deck

State whether the freeing ports are fitted with shutters, bars, or rails, and give particulars of such:— 3 horizontal bars

Additional area where sheer is less than standard.

PARTICULARS OF PROTECTION TO OPENINGS, ETC.

HATCHWAYS ON FREEBOARD AND SUPERSTRUCTURE DECKS.									
Description of Hatchway			Forecastledeck No 1				Freeboarddeck No 2		
Dimensions of Hatchway			1210 x 1210 ✓				2000 x 1800 ✓		
COAMINGS	{	Height above Deck ...	610 ✓				750 ✓		
		Thickness { Sides ...	7 ✓				7 ✓		
		{ Ends ...	7 ✓				7 ✓		
		Stiffeners	✓				130.65.8 ✓		
Brackets, Stays			✓				✓		
HATCH BEAMS	{	Number	/				/		
		Spacing							
		Scantling and Sketch ...							
		Bearing Surface							
FORE AND AFTERS	{	Number	/				1 900 1840 ✓ 150.150 ✓ teak ✓  (80 SET)		
		Spacing							
		Unsupported Lengths ...							
		Scantling* and Sketch ...							
Bearing Surface			/				/		
HATCH COVERS	{	Material	steel				teak ✓		
		Thickness	6				60 ✓		
		How fitted	hinged ✓				transverse		
		Bearing Surface	WT ✓				65 70		
Spacing of Cleats			/				500 ✓		
Number of Tarpaulins			/				2 ✓		
*Are wood fore and afters steel shod at all bearing surfaces?			yes				✓		
Are battens and wedges efficient and in good condition?			"				✓		
Are tarpaulins in good condition and in accordance with rule requirements?			"				✓		
Are lashings provided in accordance with rule requirements?			"				✓		

Particulars of any special features:—

On forecastledeck one hatch leading to store 550 x 457. coaming 130 x 7. With hinged steel WT cover (B) ✓

On freeboarddeck: strong steel skylight over accommodation aft. 660 high, 7mm plate, with hinged steel WT flaps with bronze bulleyes. (C) ✓

One hatch on steeringengine room and store aft 1000 x 900. coaming 450 x 7. With hinged steel WT hatch (D) ✓

In No 2 hatch coaming 6 bronze bulleyes 12" φ. With hinged steel deadlights, underside 125 above deck. ✓

Endorsement at first survey and at surveys for renewal of Certificate:—

The fittings and appliances are in accordance with the particulars shown on this form (or as now modified) and are in good condition.



© 2021

Lloyd's Register
Foundation