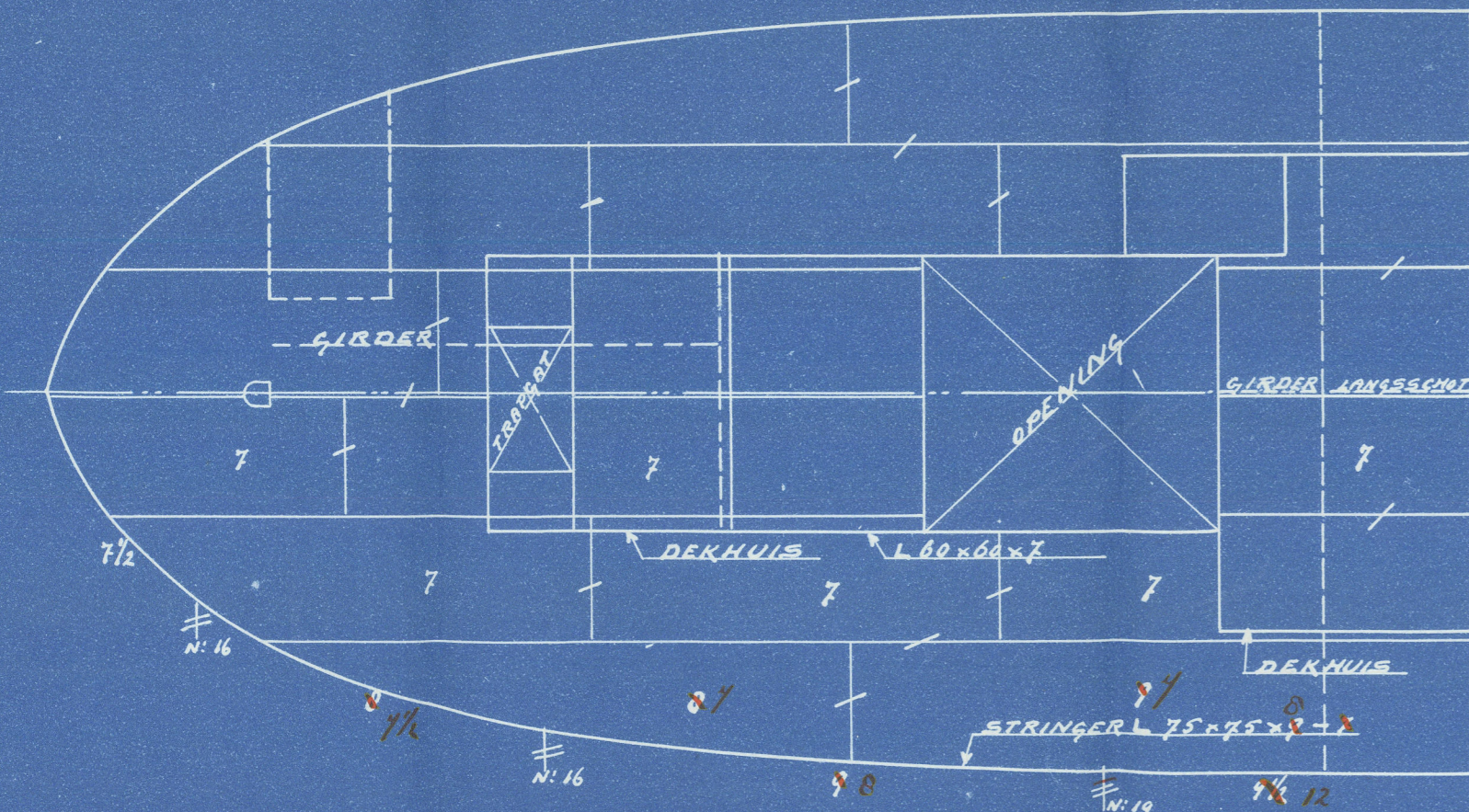


# VERHOOGDEK

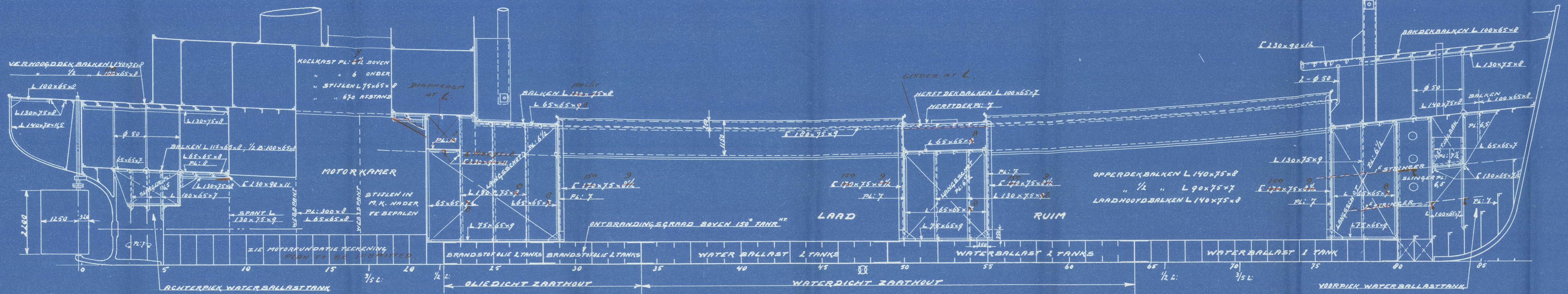
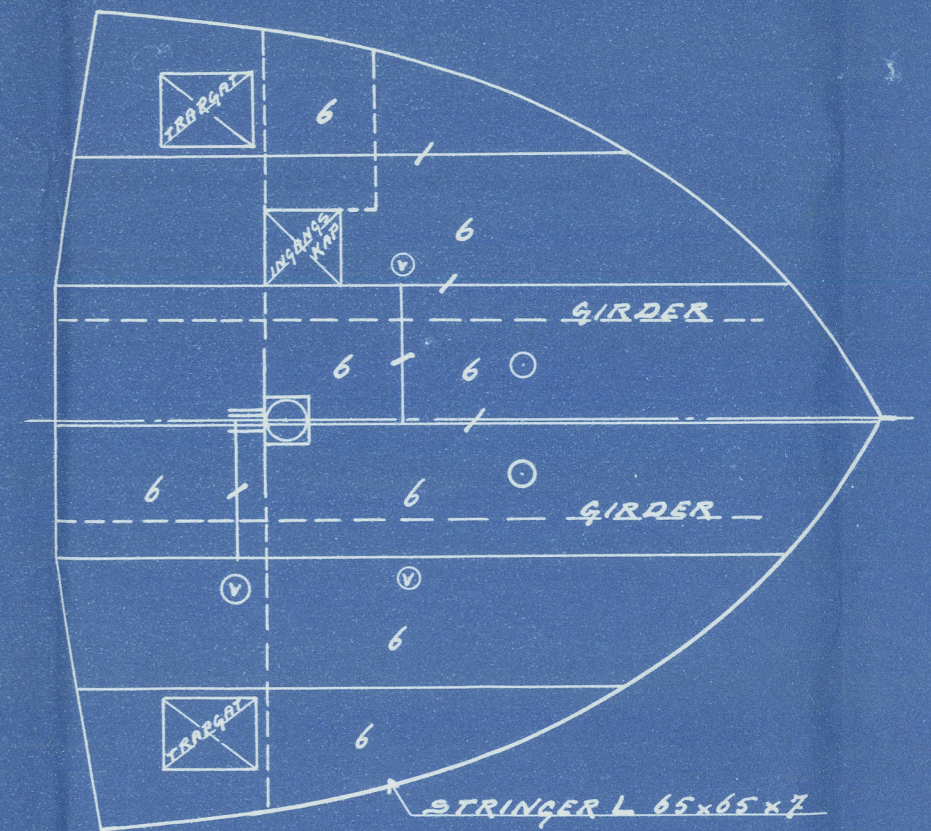


## LANGSPLAN M.S. N° 521.

LENGTE TUSSEN LLOYD'S LL: = 40,00 M = 157'-5 1/16"  
 BREEDTE 1/4 GROOTSPANT = 8,30 " = 27'-2 13/16"  
 HOLTE 1/4 ZIJDE = 3,55 " = 11'-7 3/4"  
 HOOGTE 1/4 BAK = 2,16 " = 7'-1"  
 HOOGTE TUSSEN DE DEKKEN ACHTER = 2,16 " = 7'-1"  
 HOOGTE 1/4 VERHOOGD DEK = 1,10 " = 3'-7 1/16"  
 SCHAAL 1:75 MATEN IN M/M

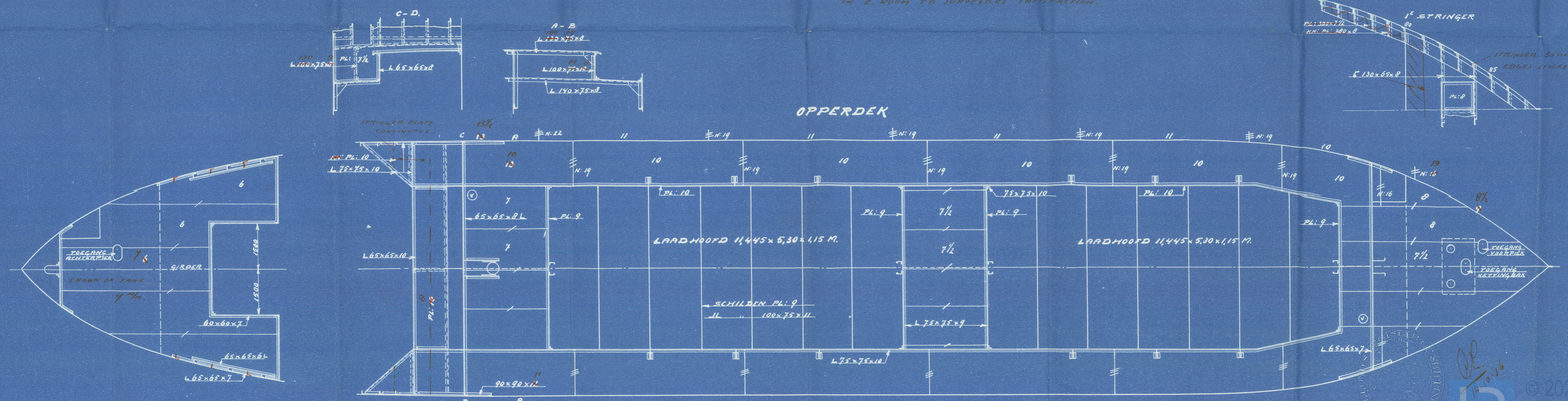
WERF JAN SMIT CZ.  
 ALBLASSERDAM  
 HOLLAND

# BAKDEK



PILING UNDER WINDLASS AND  
 IN E. ROOM TO SURVEYORS' SATISFACTION.

## OPPERDEK



BOX NO 756 A

Steamship Balkma.

WERF JAN SMIT CZN.

---

521

PROFILE & DECKS.

---

2



© 2021

Lloyd's Register  
Foundation

012446 - 012459 - 0204