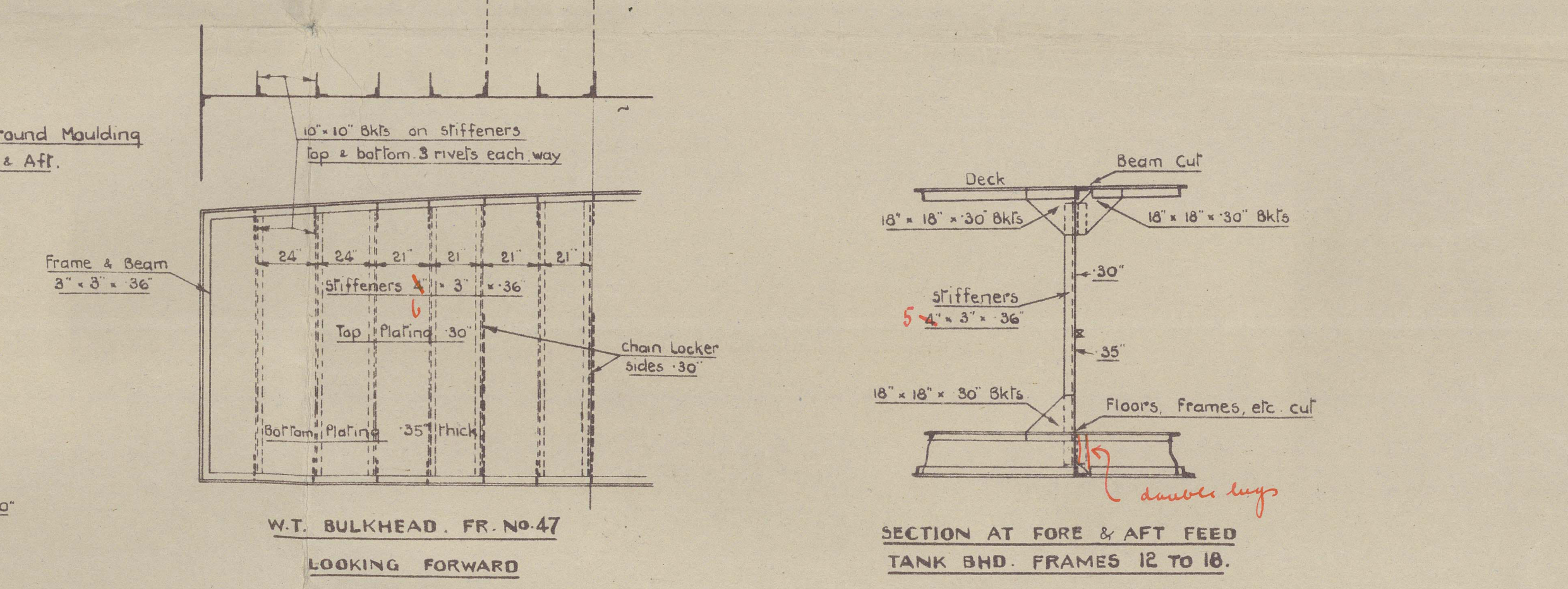
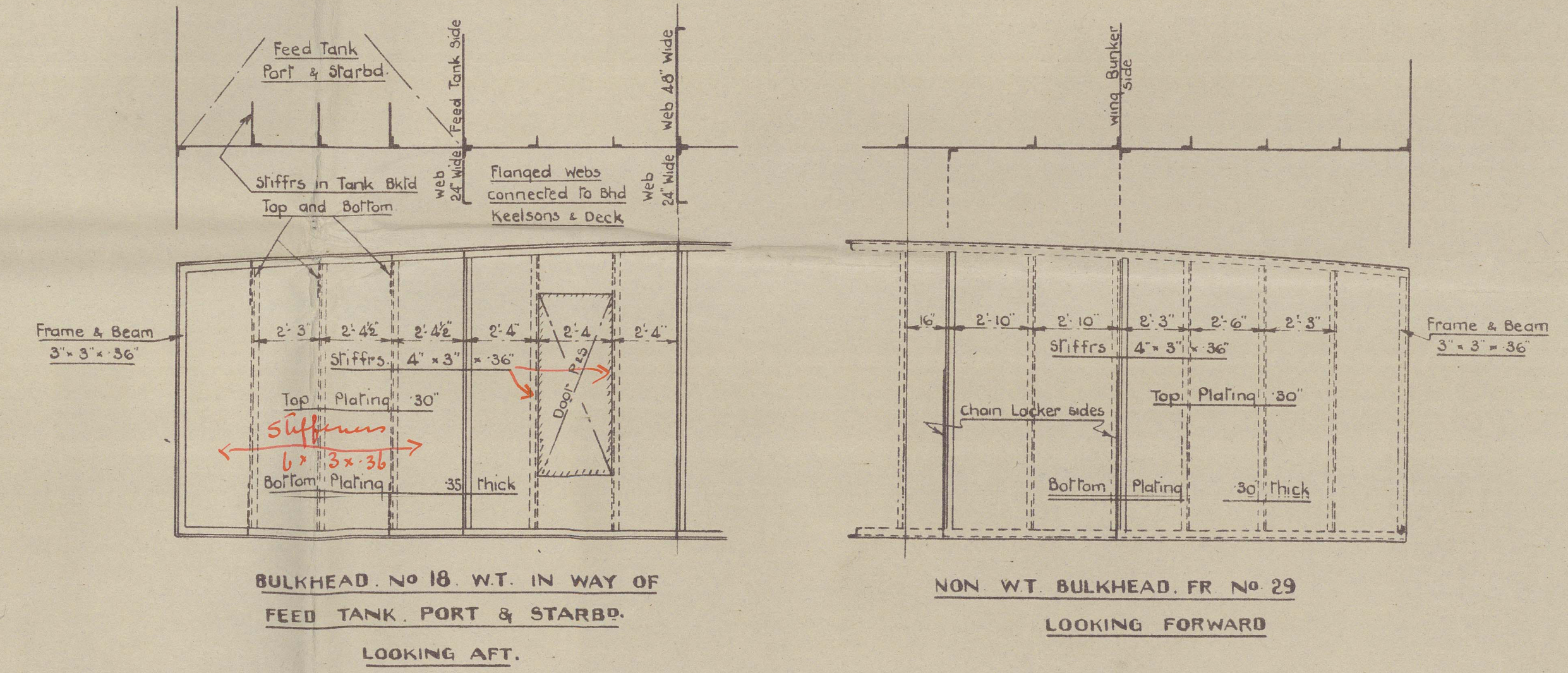
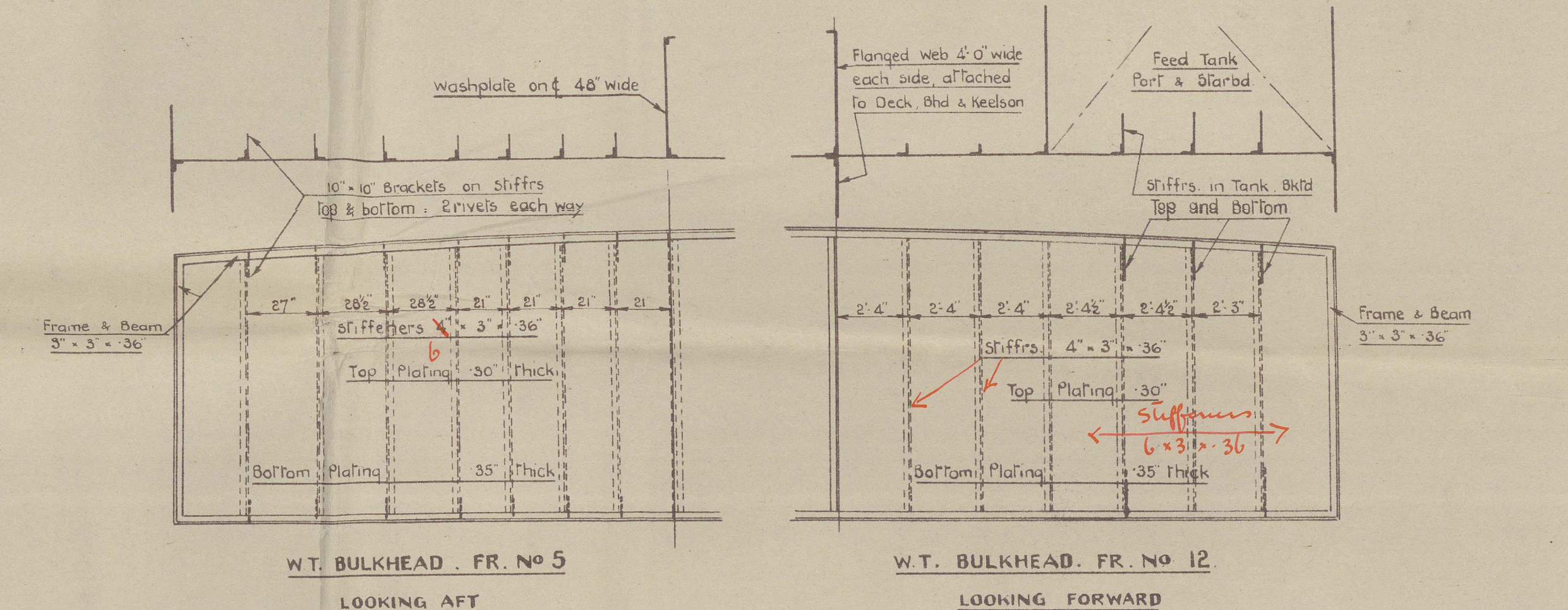
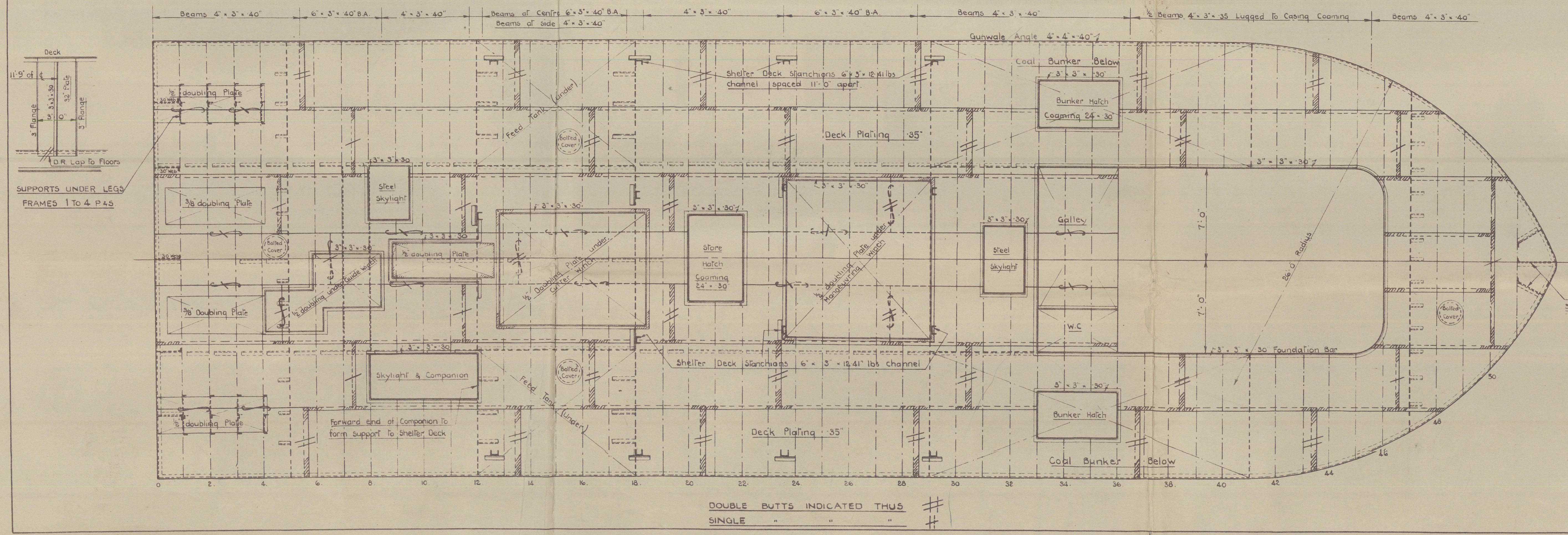
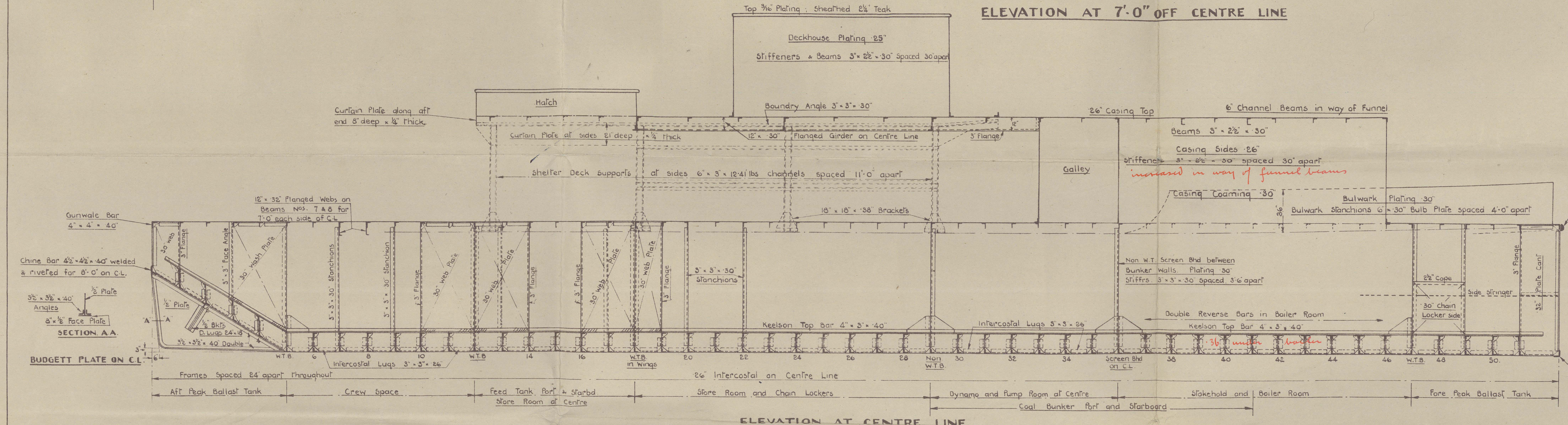
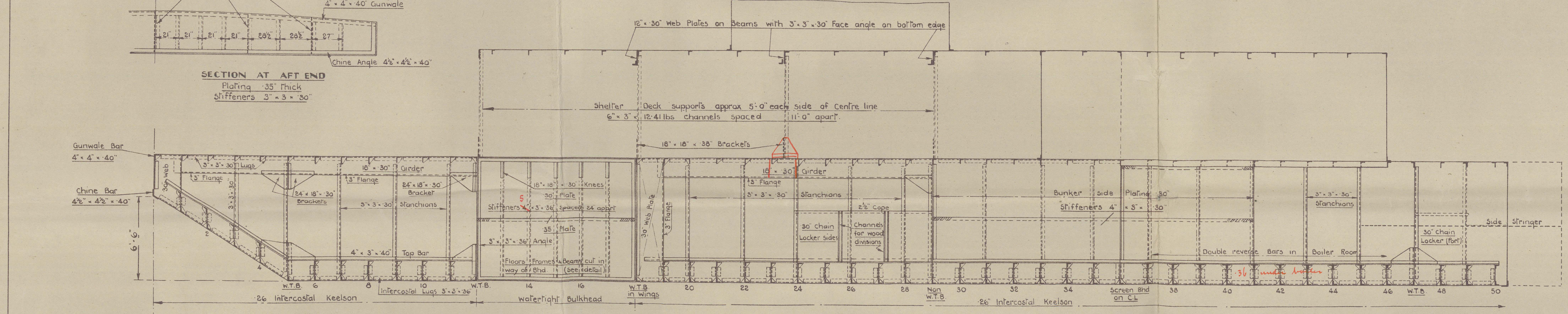
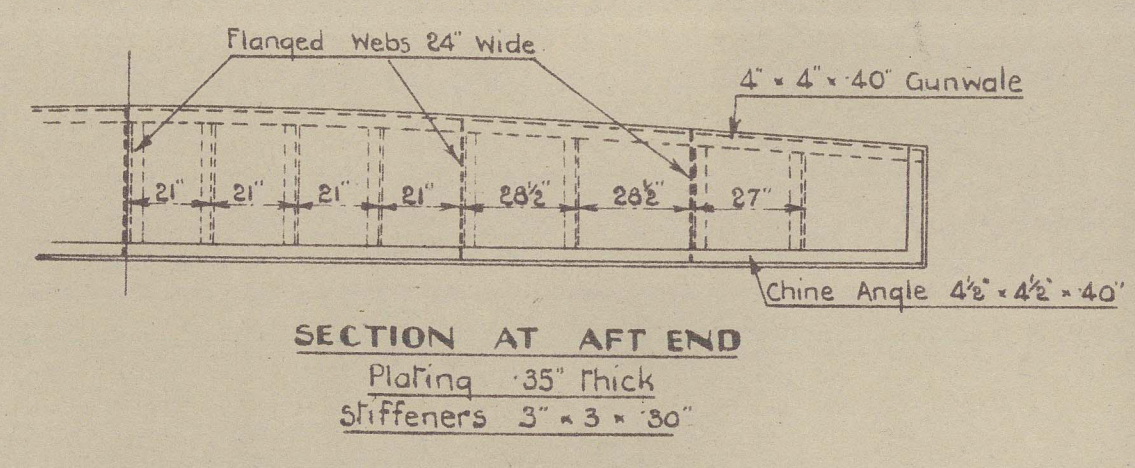
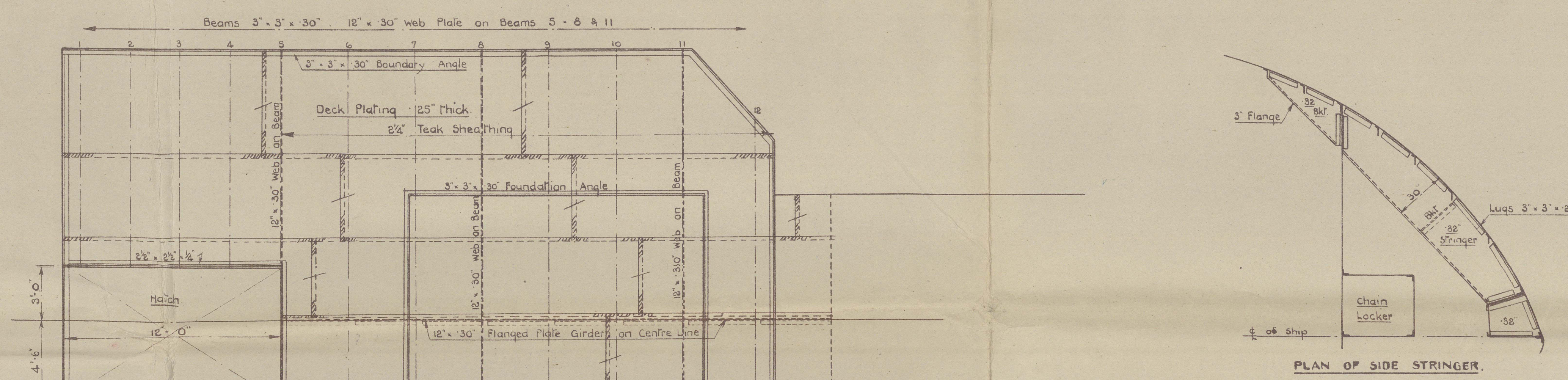


16.0.37



Original Memorial
105 (77+9) = 4410
26 x 12 1/2 = 104
4410
104
4514

YARD N° 643
PROFILE AND DECK
ROCKBREAKER PONTON
100 A - "Pontoon Barge" with notation "Rockbreaker"
CLASS LLOYDS + 100 A.I. ROCKBREAKER
DIMS. 105'-0" B.P. x 33'-0" BTH. MLD. x 9'-0" DTH. MLD.
SCALE 1/4" = 1'-0"

COOK WELTON & GEMMELL LTD
SHIPBUILDERS
BEVERLEY.

16.0.37

HULL

Book Welton & Gemmell Ltd

Yard No. 643
(Rockbreaker Pontoon)

Profile & Deck Plan

S.S. James Rockbreaker VII

HULL REPORT No. 48776.



© 2021

Lloyd's Register
Foundation

012423-012430-0274