

Lloyd's Register of Shipping.

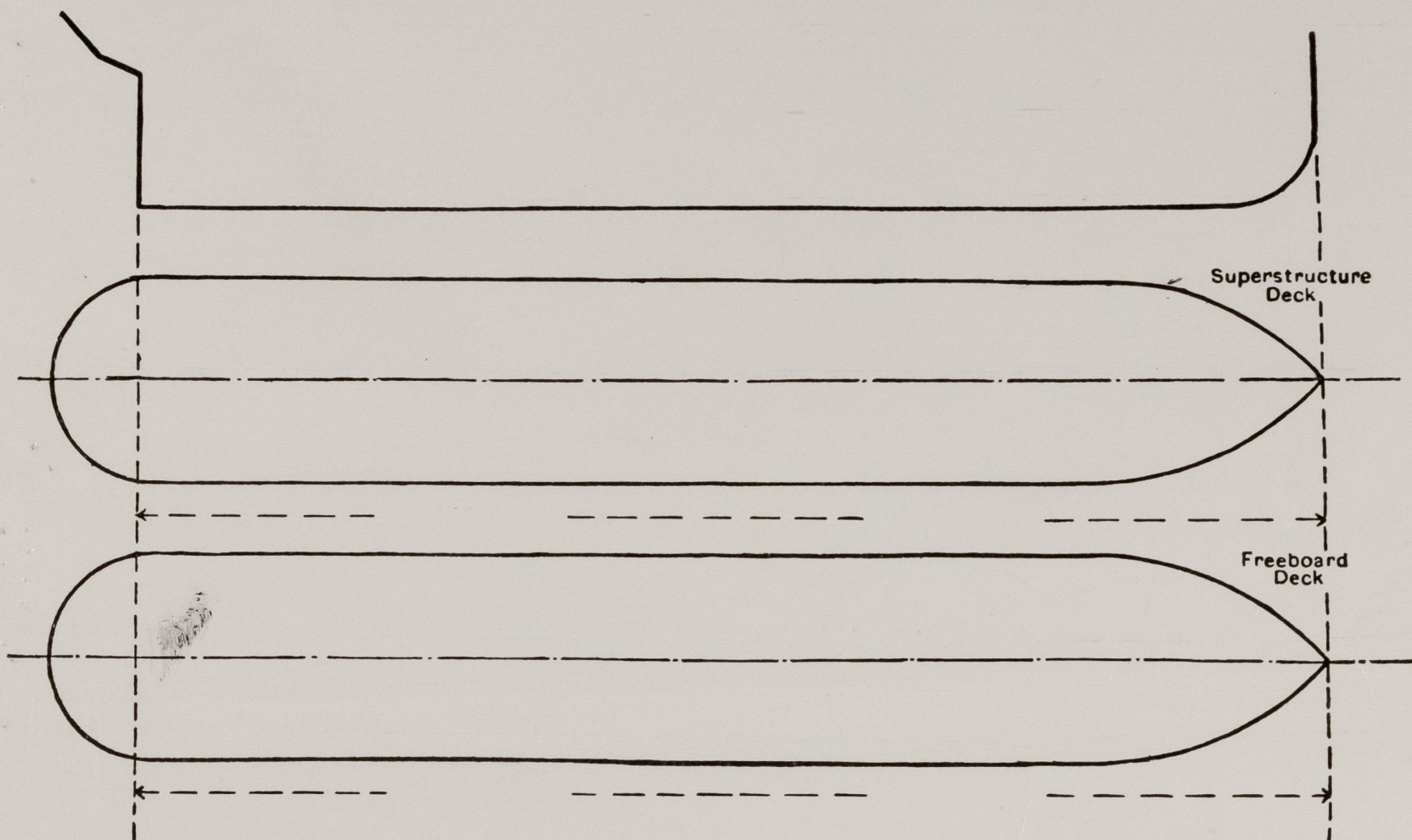
SURVEYS FOR FREEBOARD.

(CONDITIONS OF ASSIGNMENT.)

Index No. _____
(For London Office only).

Ship's Name LADY RODNEY Port of Survey HALIFAX, N.S.
 Official Number 154460 Surveyor's Signature [Signature]
 Nationality and Port of Registry ALEXANDRIA EGYPT Date of Survey 3rd MARCH 1953
SEE MONTREAL LETTER DATED 20/2/53

Disposition and dimensions of superstructures, trunks, deckhouses and machinery casings to be inserted in the diagrams and tabular statement:—



Particulars of Superstructures, Trunks, Casings, Deckhouses.								
	Coaming	Plating	Stiffeners	Spacing	End Attachments of Stiffeners	Size of Openings	Height of Sills	Height of Casings
Poop Bulkhead ...	6" x 3 1/2" x 1/2"	3/8"	7" x 3 1/2" x 7/16"	30" - 34"	LUG.	22" x 66" 2	16"	7'-9"
Raised Quarter Deck Bulkhead ...								
Bridge, After Bulkhead ...	6" x 3 1/2" x 1/2"	3/8"	4" x 3" x 3/8"	33"	LUG	34" x 66" 1		8'-6"
Bridge, Forward Bulkhead ...	"	1/2"	10" x 4 1/4" x 1/2" B.A.	30" - 31"	"	—		8'-6"
Forecastle Bulkhead ...	7" x 5" x 9/16"	5/16"	4" x 3" x 3/8"	30" - 36"	—	30" x 60" (1)	16"	7'-9"
Trunk, Aft ...								
Trunk, Forward ...								
Exposed Machinery Casings on Freeboard or Raised Quarter Decks ...	NONE							
Exposed Machinery Casings on Superstructure Decks ...		1/4"				30" x 66" (1)		7'-9" E.E.B. CASING ON BOAT D.K.
Machinery Casings within Superstructures not fitted with Class I Closing Appliances ...						27" x 66" (1)		8'-6" E.E.B. CASING UPPER D.K.
Deckhouses on Flush Deck Ships ...								
Particulars of Closing Appliances (state if capable of being manipulated from both sides).								
Poop Bulkhead ...	2 WOOD DOORS 22" x 66", 1" PANEL 1 1/2" FRAME OPEN FROM BOTH SIDES.							
Raised Quarter Deck Bulkhead ...								
Bridge, After Bulkhead ...	1- WOOD DOOR 34" x 66" 1" PANEL 1 1/2" FRAME ON STARO. PASSAGEWAY. } OPEN FROM BOTH SIDES. 2 HINGED STEEL DOORS TO STORES ETC.							
Bridge, Forward Bulkhead ...	6- 24" x 18" SIDE SCUTTLES FITTED FOR PLUGS (1/4" PLATE)							
Forecastle Bulkhead ...	1- WOOD DOOR 30" x 60", 3/4" THICK, OPEN FROM BOTH SIDES.							
Exposed Machinery Casings on Freeboard or Raised Quarter Decks ...	NONE.							
Exposed Machinery Casings on Superstructure Decks ...	1- STEEL ON BRIDGE D.K. AFT 32" x 72" PLATE 1/4" THK, 10" SILL. OPEN FROM INSIDE ONLY. EMERGENCY EXIT FROM E.R.M.							
Machinery Casings within Superstructures not fitted with Class I Closing Appliances ...	1- WOOD ON BOAT D.K. TO E.R.M., 1" PANEL, 1 1/2" FRAME, 30" x 66" OPEN FROM BOTH SIDES. ENTRANCE TO EMERGENCY DYNAMO. NO OPENINGS BETWEEN BRIDGE & BOAT DECKS TO ENGINE & BLK. ROOMS.							
Deckhouses on Flush Deck Ships ...	1- 27" x 66" WOOD, SILL ON UPPER DECK. OPENED FROM BOTH SIDES. ENGINE ROOM ENTRANCE.							

LADY RODNEY.

[illegible]

Particulars of Flush Bunker Scuttles:— NONE.

Particulars of Ventilators in exposed positions on freeboard and superstructure decks:—

Particulars of Air Pipes in exposed positions on freeboard, raised quarter, or superstructure decks:—

T.S.S. LADY RODNEY

Particulars of Gangway Cargo and Coaling Ports:—									
A. BRIDGE DK	1 P.S.	5'-6" L x 6'-6" h.	WT. STEEL, CLAMPS & STRONG BACKS,	10 1/2" SILL,	OPENS INBOARD	PASSENGER GANGWAY.			
B. UPPER "	"	16'-0" x 3'-9"	N.T.	11"	" "	CARGO GANGWAY IN BULWARKS.			
C. " "	"	15'-0" x 3'-9"	"	11"	" "	" " " "			
D. " "	"	12'-0" x 3'-9"	"	11"	" "	" " " "			
E. MAIN DK.	5 P.S.	6'-6" x 5'-6"	WT. STEEL. CLAMPS ONLY.	6"	OPENS OUTBOARD	" " " "			
F. " "	2 P.S.	2'-6" x 5'-6"	" "	"	"	WORK & OIL DOOR	" " " "		
G. " "	1 P.S.	4'-0" x 6'-3"	" "	"	"	" " " "	" " " "		
ALL DOORS ARE STRONGLY MADE & WELL STIFFENED.									

Particulars of Scuppers and Sanitary Discharge Pipes:—

ALL SCUPPERS & SANITARY DISCHARGES EXCEPT IN WAY OF INSULATED SPACES LEAD BELOW MAIN DECK & DISCHARGE THRO' SHIP'S SIDE BETWEEN LIGHT & LOAD DRAFT LINES. ALL ARE FITTED WITH SELF-CLOSING STORM (FLAP) VALVES EXCEPT FROM EXPOSED UPPER D^X FORWARD & AFT IN WAY OF HOLDS (2 P.E.S. FOR 1 P.E.S. AFT) WHICH ARE FITTED WITH BENDS ONLY. 2 SANITARY DISCHARGES P.E.S. ON MAIN D^X IN WAY OF MACHINERY SPACES HAVE CLOSING GEAR LED TO DECK ABOVE. SCUPPERS & DRAINS IN TWEEN DECKS ARE TRAPPED & LED TO BILGES.

MAIN DECK	32 - 14" DIAR.	HINGED & FITTED FOR W.T. PLUGS	1/4" PLATE.
UPPER "	8 - 12" "	"	" WITH DEADLIGHTS
"	16 - 24"x18" OVAL	"	" FOR W.T. PLUGS.
"	2 & BRIDGE	52 - 14" DIAR.	" " " "
UP. BR. & POOP	30 - 16" "	"	" " " "

NUMBER OF PLUGS 23 FOR ROUND SCUTTLES & 4 FOR 24"x18" OVAL SCUTTLES APPROX 12%
BRIDGE DEK FORD 10-34"x36" SQUARE FITTED WITH HEAVY WOOD SHUTTERS GLASS 1/2" TH.
SIDES 1 - PES

Vertical distance of Sill of lowest Side Scuttle above top of keel.

BOAT DECK, PROM. & BRIDGE	TEAK RAIL	3'9 1/2" HIGH	& 3 RODS.
FORECASTLE	IRON RAIL	" "	" "
POOP	" "	" "	" "

Particulars of Gangways, Lifelines, etc:—

NO PERMANENT ATTACHMENTS FITTED AT FORWARD OR AFT ENDS EXPOSED PARTS ON UPPER DECK BETWEEN BRIDGE & POOP OR FORECASTLE.

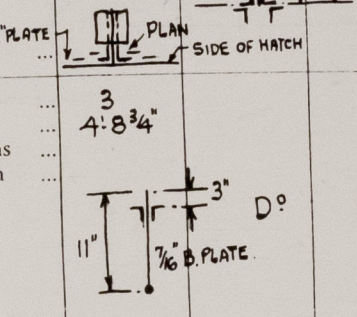
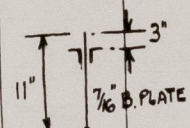
Particulars of Freeing Arrangements.						
	Length of Bulwark	Height of Bulwark	Size of Freeing Ports	Number each side	Area each side	Rule area each side
After Well	24' 0"	45"	48" x 21"	1	7 sq. FT.	8.9 sq. FT.
Forward Well	81' 0"	45"	"	2	14 "	16.2 "

State position of each freeing port { After Well:— 12'-0" FROM BRIDGE AFT BULKHEAD TO $\frac{1}{2}$ OF PORT 11" SILL.
(F. and A. position and height above deck edge) { Forward Well:— 21 $\frac{1}{2}$ 53'-6" FROM F/CLE " " " PORTS 11" "

State whether the freeing ports are fitted with shutters, bars, or rails, and give particulars of such:—EACH FITTED WITH CLOSING SHUTTER & 2 - $\frac{7}{8}$ " GUARD RAILS.

Additional area where sheer is less than standard.

PARTICULARS OF PROTECTION TO OPENINGS, ETC.

HATCHWAYS ON FREEBOARD AND SUPERSTRUCTURE DECKS.										
Description of Hatchway	CARGO 1	CARGO 2	CARGO 3	CARGO 4	CARGO #3 ON UPPER DX.	COAL SCUTTLE #5	FILE STORE #6	COOLER HATCHES #7	COOLER HATCHES #8	
Dimensions of Hatchway	15'9" x 18'11 1/4"	15'0" x 18'11 1/4"	15'0" x 18'11 1/4"	15'0" x 18'11 1/4"		30'd.	48" x 30"			
COAMINGS	Height above Deck ... 29 1/2" 3G" E. Thickness { Sides ... 7/16" Ends ... Stiffeners ... 7" x 3 1/2" x 1/2" B.A. Brackets, Stays ... (1) 2" DIAR.	D°	D°	D°		18" 3/8"	18" 3/8"			
HATCH BEAMS	Number ... (1) Spacing ... 7'10 1/2" Scantling and Sketch  Bearing Surface ... 1/2" PLATE	(1) 7'6" N°2	(1) N°2	(1) N°1	(1) SAME AS N°1	NONE	NONE	ON UPPER DECK FORWARD INSIDE STEEL DECKHOUSE. PLUG HATCHES HINGED FLUSH WITH DECK. STEEL DOOR ON BULKHEAD.	ON BRIDGE DECK AFT INSIDE PASSAGEWAY HINGED PLUG HATCHES FLUSH WITH DECK. STEEL DOOR ON BULKHEAD.	
FORE AND AFTERS	Number ... 3 Spacing ... 4'8 3/4" Unsupported Lengths ... Scantling and Sketch  Bearing Surface ...	D°	D°	D°	D°	NONE	NONE			
HATCH COVERS	Material ... WOOD Thickness ... 2 3/4" How fitted ... Bearing Surface ... 3"	D°	D°	D°	D°	CAST COVER HINGED.	2 1/2" WOOD			
Spacing of Cleats	25" TO 26"	24"	24"	24"			24"			
Number of Tarpaulins	3	3	3	3			2			
*Are wood fore and afters steel shod at all bearing surfaces? <input checked="" type="checkbox"/> Are battens and wedges efficient and in good condition? YES. Are tarpaulins in good condition and in accordance with rule requirements? YES. Are lashings provided in accordance with rule requirements? YES										

Particulars of any special features:—

PRESENT LOAD DRAFT MARKS ARE 22'3" F. 23'9" A. APPROXIMATELY.
 DRAFTS & CORRESPONDING TONS/M. (FROM TABLE IN SHIPS CHART ROOM) 18', 20', 22' & 23', 45.1, 46.1, 47.1, 47.58 TONS.
 CORRESPONDING DISPLACEMENTS 8220, 9300, 10437 & 11,000 TONS.
 HEIGHT OF SILL OF LOWEST DOOR ON MAIN D^K ABOVE LOAD DRAFT LINE ABOUT 3'6".
 PRESENT FREEBOARD LINE IS 10'1 1/2" BELOW STATUTORY DECK LINE. F.W. MARK IS 6" ABOVE E. OF DISC.
 STATUTORY DECK IS 1 3/4" ABOVE TOP OF 1" COMPOSITION ON STEEL DECK AT SIDE.
 VESSEL HAS BEEN DESIGNED FOR 23'0" MEAN DRAFT & 4200 TONS GROSS D.W.

REMARKS:— SIDE SCUTTLES DO NOT CONFORM TO RULE XXVIII. ALL SIDE SCUTTLES HAVE TO BE OPENED TO INSERT W.T. PLUGS.
 PLUGS ARE NOT PERMANENTLY ATTACHED AND NUMBER OF PLUGS IS NOT SUFFICIENT FOR NUMBER OF SCUTTLES BELOW FREEBOARD DECK.

Endorsement at first survey and at surveys for renewal of Certificate:—

The fittings and appliances are in accordance with the particulars shown on this form (or as now modified) and are in good condition.



© 2021

Lloyd's Register
Foundation