

LLOYD'S REGISTER OF SHIPPING

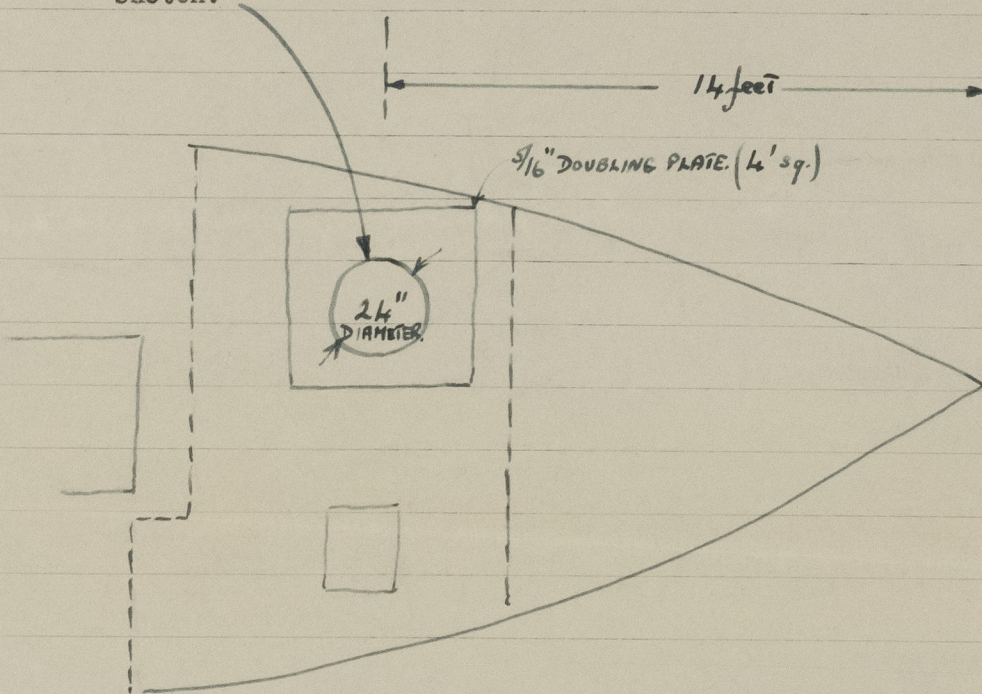
UNITED WITH THE BRITISH CORPORATION REGISTER

ALTERATIONS TO CONDITIONS OF ASSIGNMENT OF LOADLINES

Ship's Name M.V. " ONWARD PIONEER ".Official No. 185304.Port of Registry FLEETWOOD.This ship has been under survey at FLEETWOOD.

on 5th March, 1957. 195 and the following alterations to the conditions of assignment of loadlines have now been effected/~~found~~—

FREEBOARD DECK : - An escape hatch has been fitted from the masters accommodation (for'ard) as in sketch.



Height of coaming, 24"., $\frac{1}{4}$ " thick, fitted with hinged steel cover $\frac{1}{4}$ " thick having a single dog claw securing catch, operated from both sides, (the bearing surface being on to rubber jointing).

G. J. Atkins.
8/3/57.

11.4.57

A copy of this Report has been placed on board.