

24 NOV 1954

SELF PROPELLED ALL WELDED BUNKERING LIGHTER. CARRYING OIL IN BULK F.P. ABOVE 150°F.
FOR THE CARRIAGE IN BULK OF DIESEL & FURNACE OIL.
CLASSIFICATION:- LLOYDS * 100 A1. SEA-GOING.
ALSO TO M.O.T. REGULATIONS FOR A VESSEL OF CLASS IX.

DIMENSIONS:-

LENGTH O.A. APPROX.	121'-3"
LENGTH B.P.	117'-3"
BREADTH MLD.	18'-6"
DEPTH MLD.	8'-0"

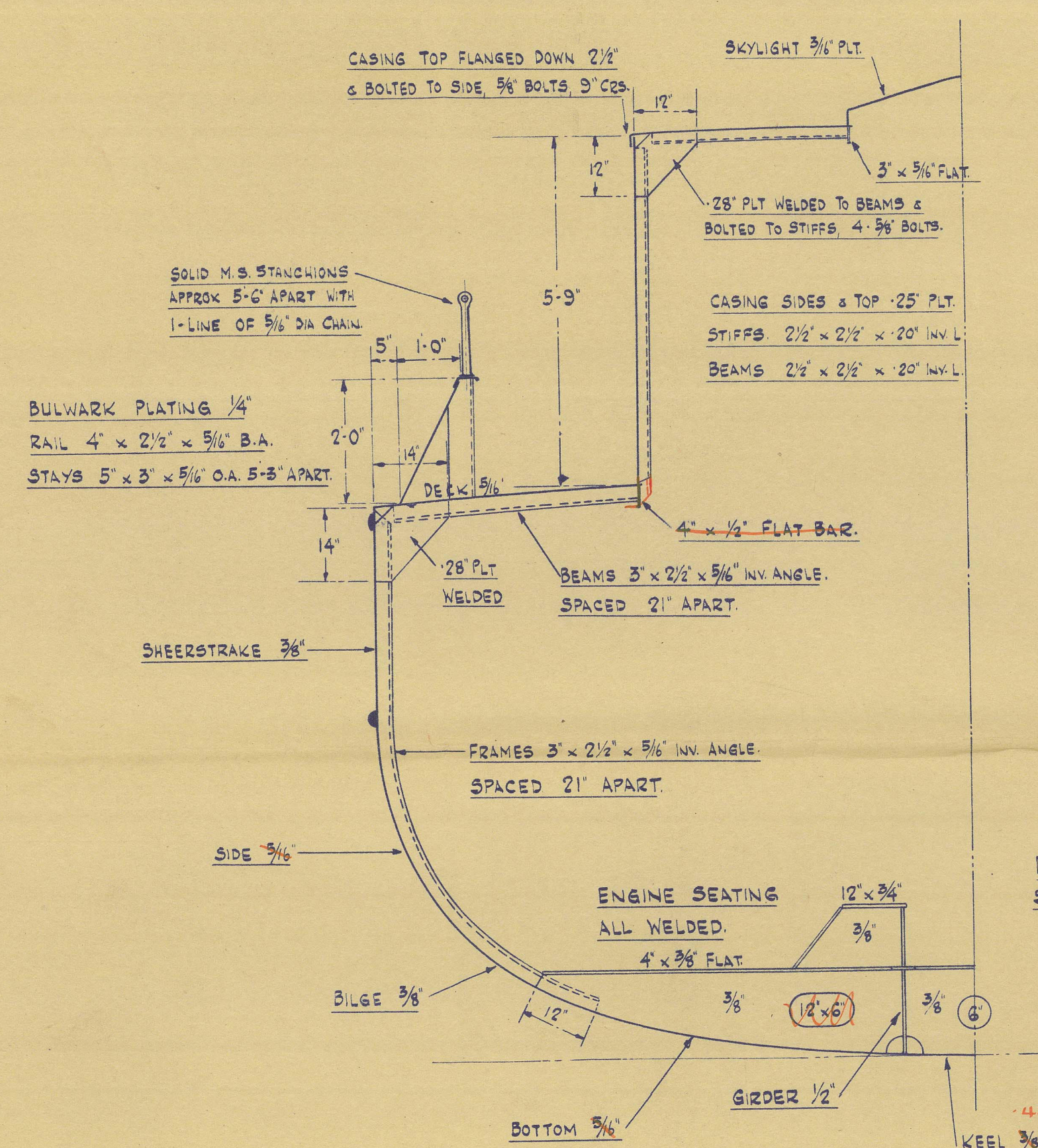
NUMERALS.

L	117.25
B	18.5
D	8.0
d	6.75
h	7.0

117.25 (18.5 + 6.75) + .85 x 117.25 (8.0 - 6.75)	=	3085
TRUNK .85 (55 x 2.5)	=	117
CASING .75 (15.5 x 5.5)	=	64
WHSE & W.C. .75 (10.0 x 9.25)	=	70
		3336

EQUIPMENT LETTER 'b'

Tanks tested to a head of 5' above deck.



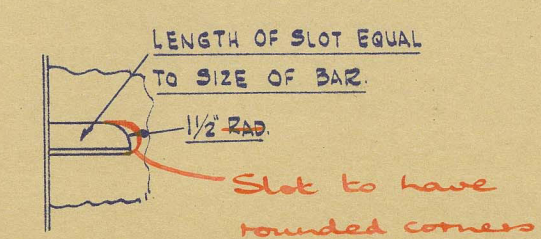
SECTION THRO. ENG. ROOM.

FRAMES AFT OF ENG. ROOM: 3' x 2 1/2' x 5/8' INV. ANGLES SPACED 21' APART
FLOORS " " " 5/8' THICK. HEIGHT AS REQUIRED.
BEAMS " " " 3' x 2 1/2' x 5/8' INV. ANGLES.
ALL WELDED COUNTER FITTED, CONSTRUCTED OF 3/8' PLY.
STERNPOST 5' x 2 1/2' MILD STEEL.

MAIN ENGINE:-
CROSSLAY ERLS/75 CAPABLE OF
DEVELOPING 250 B.H.P. (12 HOUR RATING)
@ 750 R.P.M., DE-RATED TO 200 B.H.P.
@ 600 R.P.M. ENGINE FITTED WITH A
2-1 'DOWN' REDUCTION GEAR.

DETAILED PLAN OF ENG.
SEATING TO BE SUBMITTED

DETAIL OF DRAIN SLOTS
IN WAY OF ANGLE LONGITUDINALS.



DETAIL OF DRAIN SLOTS
IN WAY OF FLAT BAR LONGITUDINALS.

SECTION IN WAY OF TRANSVERSE

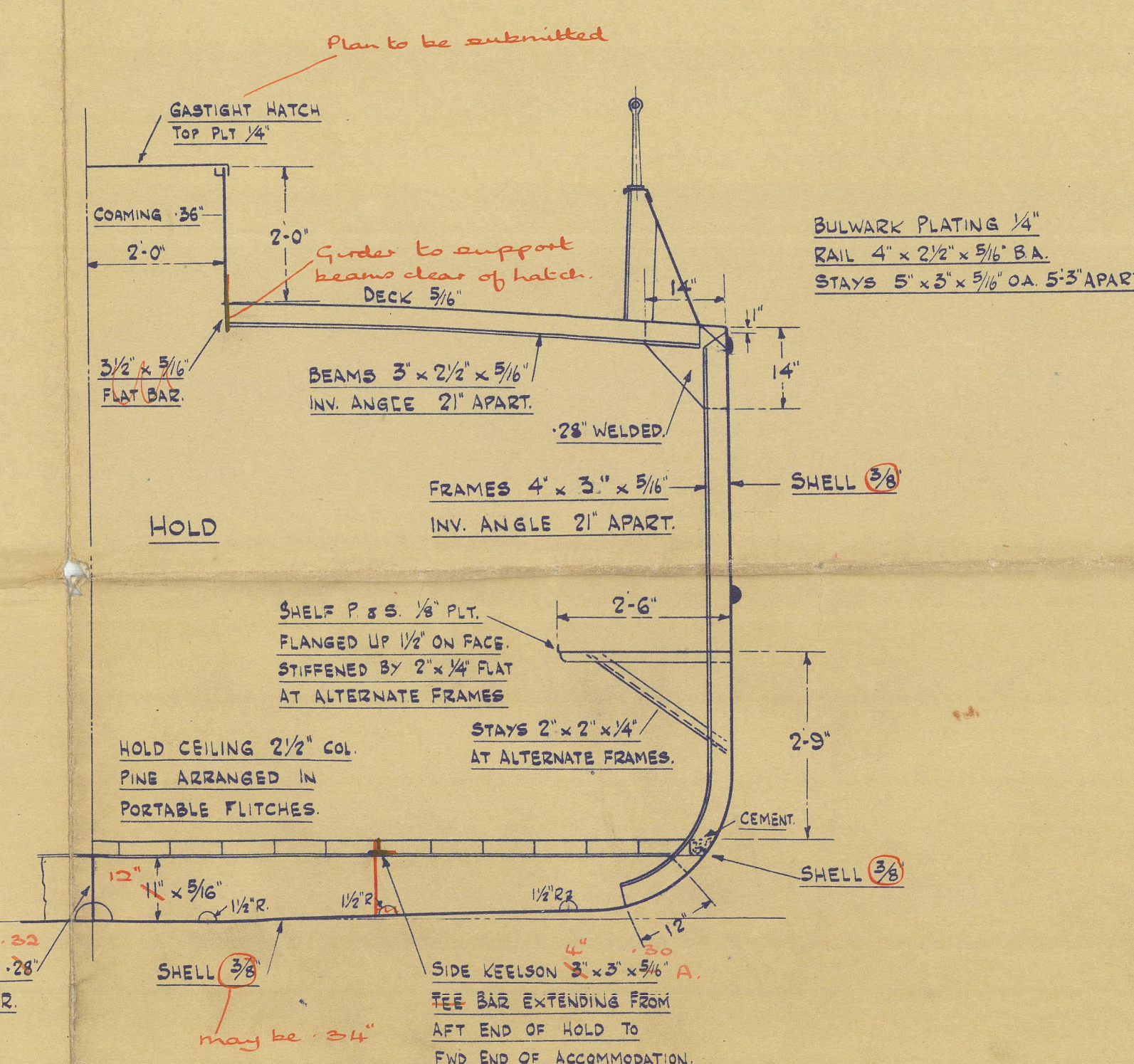
ONE OFF FITTED IN MIDDLE OF LENGTH OF EACH TANK.
LENGTH OF TANKS NOS 1 & 2 = 12'-4 1/2"
LENGTH OF TANKS NOS 3 & 4 = 14'-1 1/2"

TANK END BHDS. O.T. 5/8' PLY. WITH 5' x 5/8' FLAT BAR
VERTICAL STIFFS WITH 5/8' BKTs TO DECK, TRUNK & SHELL.
TRANSVERSE BHDS. TO PEAKS & HOLD ETC. SIMILAR.
CENTRE LINE BHD. 1/2" NON O.T. WITH STIFFENERS AS SHOWN.
EXPANSION TRUNK 10'-3" WIDE x 2'-6" HIGH, STIFFENED AS SHOWN.

VESSEL OF ALL WELDED CONSTRUCTION.

EQUIPMENT:-

- 2-5 1/4 cwt. STOCKLESS BOWER ANCHORS.
- 1-1/4 cwt. STOCKED STREAM ANCHOR.
- 8-15 FM. LENGTHS 3/4" STUD LINK CABLE.
- 45 FMS. 2 1/4" CIRC. F.S.W.R. STREAMWIRE.
- 70 FMS. 2" CIRC. F.S.W.R. TOWLINE.
- 2-70 FM. LENGTHS 3" CIRC. 4 STRAND COIR MOORING ROPE.
- 1-60 FM. LENGTH 1 3/4" CIRC. COTTON LINE.



SECTION THRO. HOLD.

FRAMES FWD. OF HOLD 4' x 3' x 5/8' INV. ANGLES SPACED 14" APART.
FLOORS " " " 1 1/2' x 5/8' PLY. WITH 3' x 3/8' FLAT REVERSE BARS.
BEAMS " " " 3' x 2 1/2' x 5/8' INV. ANGLE WITH .28" KNEES.
2 KEELSON 28' PLY. WITH 6' x 3/8' FLAT RIDER.
HANGING STRINGER FWD. OF HOLD 4' x 4' x 3/8' O.A. WELDED TO
FRAMES & BRACKETED TO BHDS. & STEM.
STEM OF 6' x 2 1/4' M.B. FLAT BAR.
LOW RUBBER OF 5' WIDE x 8' DEEP ENGLISH OAK FITTED BETWEEN
TWO 3' x 3/8' FLAT BARS WELDED TO SHELL, RUBBER
NEATLY TAPERED TO LINE OF SHELL MOULDING AT FE 40.

RICHARD DUNSTON LTD.
SHIPBUILDERS,
THORNE, YORKSHIRE.

DRAWN BY J.H.L.	DATE 7-10-54.	This Drawing and the Information it contains are the Property of RICHARD DUNSTON LTD. It is not to be Traced, Copied or Published without their Written Consent, nor is the Information thereon to be misused in any way.
TRACED BY	DATE	
CHECKED BY	DATE	
REVISIONS		YARD NO T. 910
No.	DATE	DRG. NO 5530/4
PARTICULARS		TITLE:- MIDSHIP SECTION.
		SCALE:- 1/2" TO ONE FOOT

01242-012422-0063

"ONWARD PIONEER"

RICHARD DONSTON LTD.

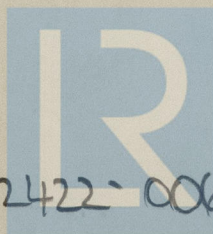
YARD No 910.



HULL F.E. REPORT No 61827

MIDSHIP SECTION.

RECORDS DEPT.
LONDON.



© 2021

Lloyd's Register
Foundation

012412-012422-0063

0063



Lloyd's Register
Foundation