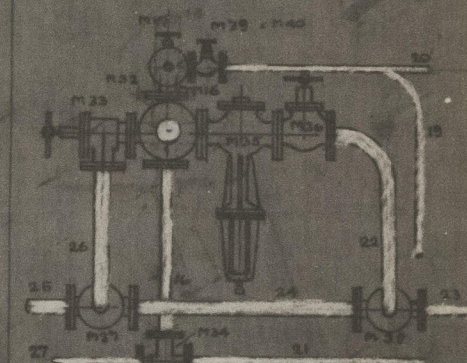


DETAIL OF PUMPING ENGINE SECTIONS

DETAIL OF 4" STEAM CONNECTIONS  
LOOKING TO STEAKBOARD

The remaining requirements of section 34 of the rules 1938-9 to be complied with so far as they are applicable.

The flash point of the oil fuel to be above 150°F. and the remaining requirements of Section 20 of the Rules 1938-9 to be complied with so far as they are applicable.

gms 16/1/29

# PIPE ARRANGEMENT

## EN<sup>o</sup> N<sup>o</sup> 2770

SCALE 1/4"=1'00"

Drainage of Steam pipes to Surveyors satisfaction



Lloyd's Register  
Foundation



LONDON COPY

S.S. BARBOSA

~~60~~

(9)

G. Brown

212

Pthe awry -



© 2021

Lloyd's Register  
Foundation

012393-012400-0221