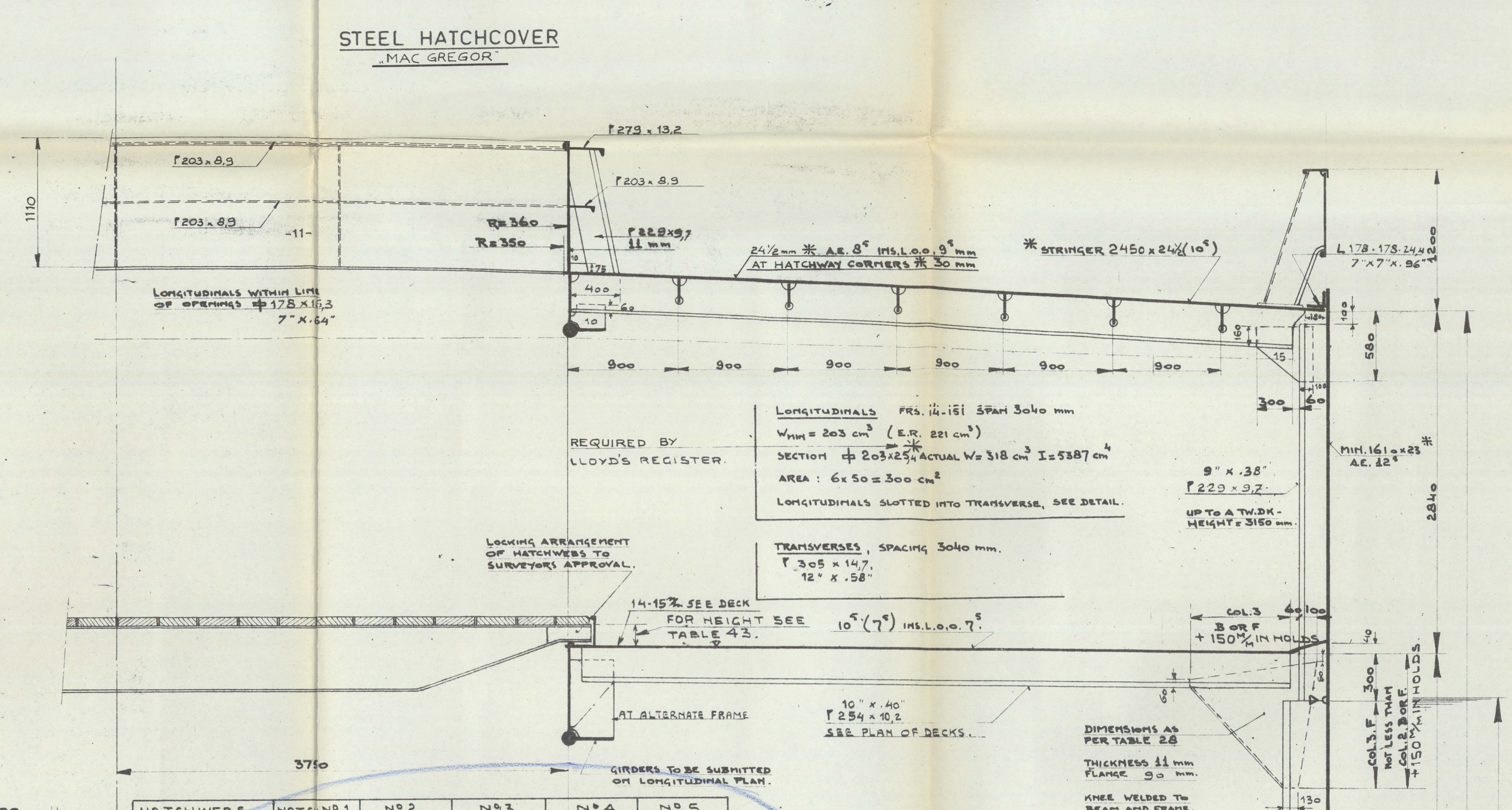
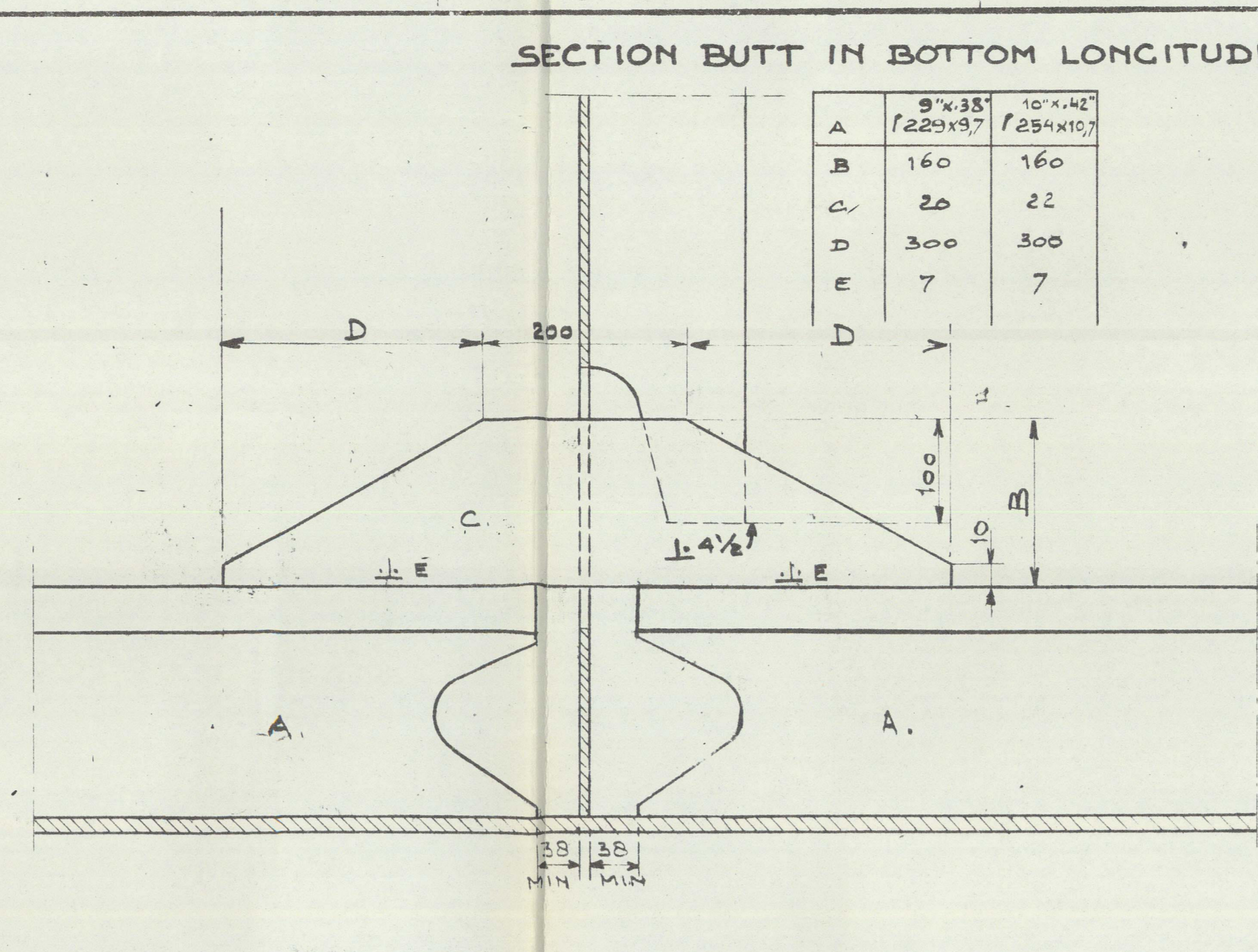
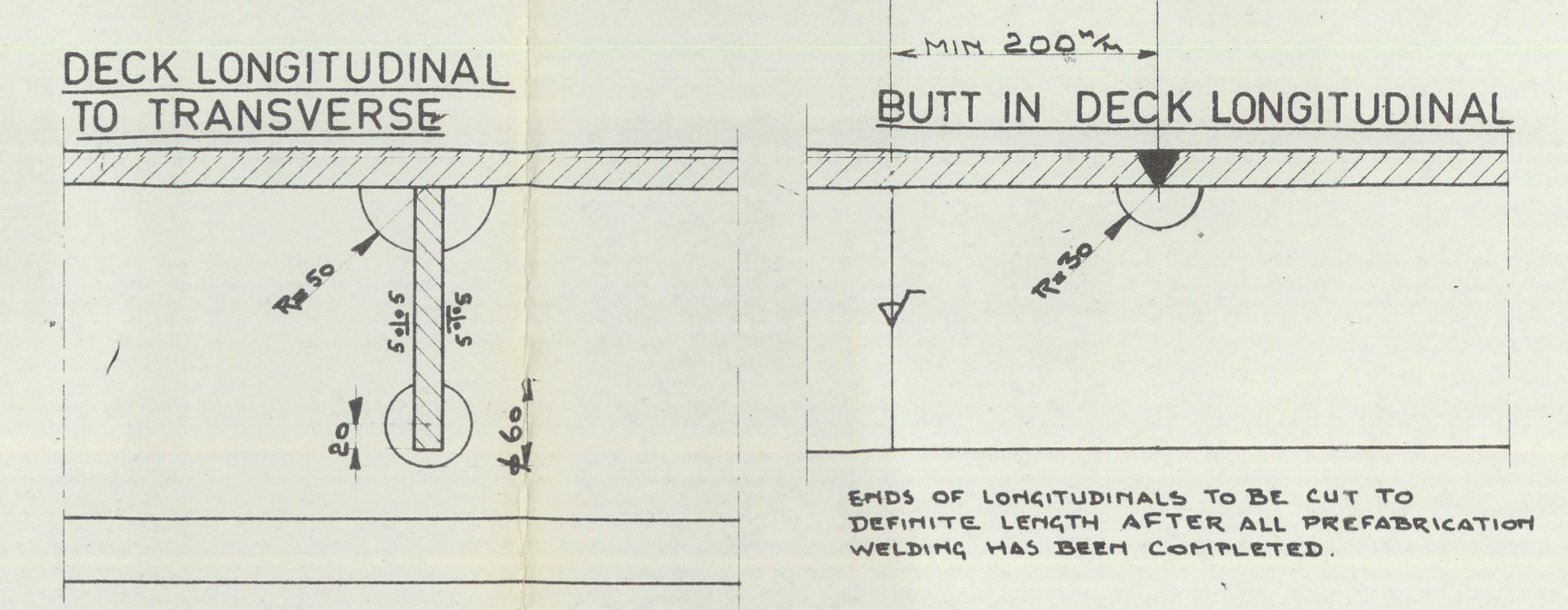


WIJZ	OMSCHRIJVING	DATUM	PAR.



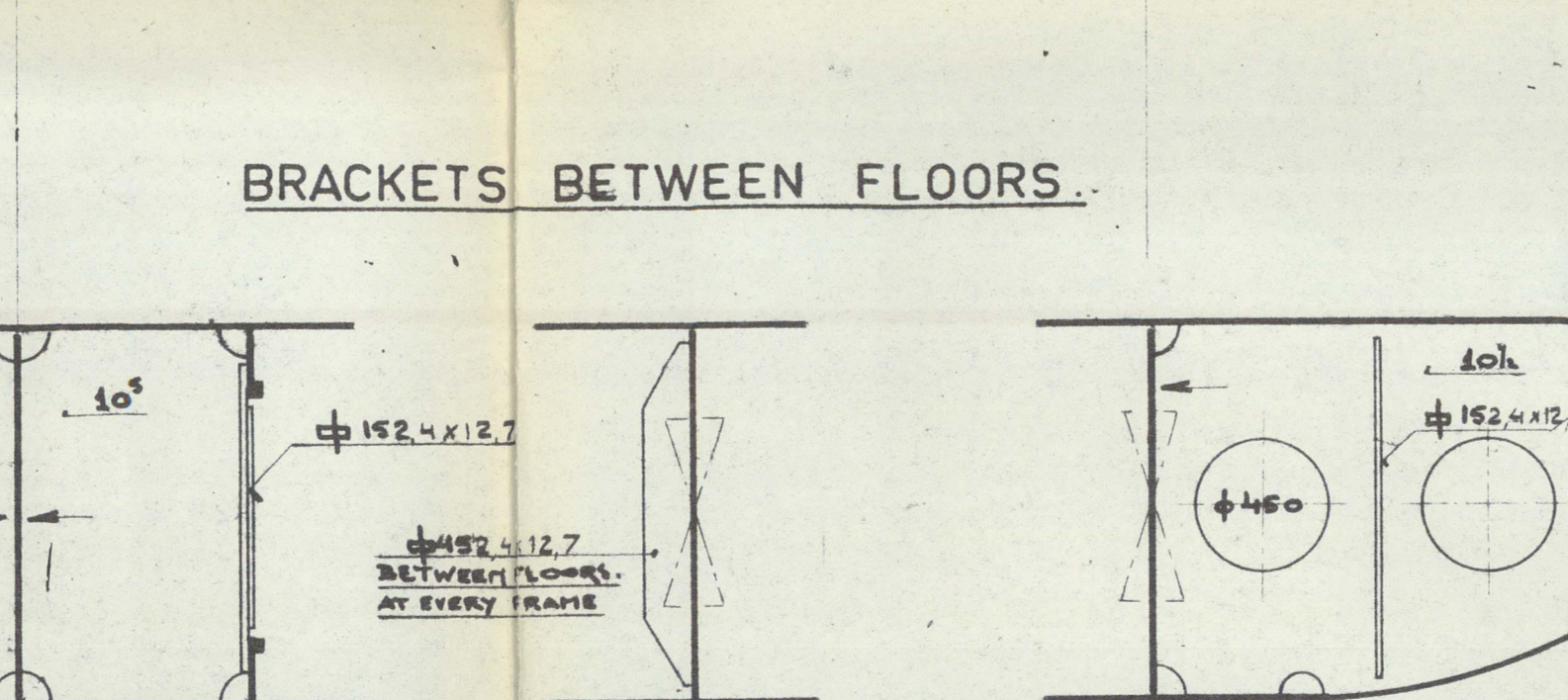
CLASS: LLOYDS 100 A 1.
"STRENGTHENED FOR HEAVY CARGOES"
WITH THE SPECIAL NOTATION: LONGITUDINAL FRAMING AT BOTTOM AND AT UPPERDECK.
IN ACCORDANCE WITH SECTION 34 L.R.

NO HEAVY CARGOES IN DEEPTANKS.

LENGTH B.P. 142,68 m. = 468'-1 1/2"
MOULDED BREADTH 20,00 m. = 65'-7 1/2"
DEPTH 12,50 m. = 41'-0 3/8"
DRAUGHT 9,30 m. = 30'-6 3/8"

HATCHWAYS	N1	N2	N3	N4	N5
SPACING "A"	135	1183	1215	1310	1352
DECKHEIGHT "A"	500	4186	3476	3240	3240
MODULUS (IN) CM ²	450	3217	2874	2874	2874
UNIVERSAL	203x114x10	240x114x10	240x114x10	240x114x10	240x114x10
THICKNESS HATCH COVERS IN "A"	85	76	76	76	76

FROM FR. 48 TO FR. 62 DISTANCE OF STIFFENERS AND BEAMS 380 mm



TANKTOP	IN HOLDS	IN DEEPTANK	IN ENGINE ROOM
16 (11+5) mm	16 (11+5) mm	16 (11+5) mm	16 (11+5) mm
16 (11+5) mm	16 (11+5) mm	16 (11+5) mm	16 (11+5) mm
16 (11+5) mm	16 (11+5) mm	16 (11+5) mm	16 (11+5) mm
16 (11+5) mm	16 (11+5) mm	16 (11+5) mm	16 (11+5) mm

BOTTOM SHELL PLATING 16 (11+5) mm TO BILGE PLATE, BILGE PLATE 12 (8+4) mm BETWEEN 0,05 L AND 0,25 L FORWARD 21 mm

LONGITUDINALS:	HOLD	DEEPTANK	ENGINE ROOM
FR. 43-152	2 ND FRAME	3 RD FRAME	2 ND FRAME
FLOORS AT EVERY	9" x 3/8"	10" x 1/2"	9" x 3/8"
BOTTOM LONGITUDINALS	16" x 1/2"	16" x 1/2"	16" x 1/2"
INNER BOTTOM LONGIT.	16" x 1/2"	16" x 1/2"	16" x 1/2"
STRUTS	NO STRUTS	10" x 3/8"	NO STRUTS

EQUIPMENT	NUMERICAL (ENGLISH)	51130
3 BOWER ANCHORS, EACH	4155 kg.	
CHAINS, SPECIAL STEEL, 47 mm	AT OUTERS REG. 40 mm, LENGTH 500 m	
TOWING 200 m, 6224 kg, 5/8"	ACTUAL BREAKING STRENGTH 21 TONS	
MOORING ROPES 1/2" 200 m	6018, 220 kg, 3/4"	
ACTUAL BREAKING STRENGTH 21 TONS		

BENAMING	GROOTSPANT
OPDRACHT: 00327	HOOFD: 002
BUREAU: DE TEGENINGEN	TEK. No.

TEKENING VERSTREKT AAN:	ANAL	DATUM
BEDR. KANT. SCHEEPSB.		
SCHEEPSBOUW		
TINKERFABRIEK		
BANKW. SNEIDER		
SCHILDEWYERKPL.		
MESELAARSWERKPL.		
MACH. FABRIEK		
REG. EN CONTROLE		
KOPERSLAGERIJ		
PLAATWERKERIJ		
MODELMAKERIJ		
ELECTR. AFDELING		
DOROT		
OPZICHTER		

APPROVED BY LLOYD'S REGISTER, SEE LETTER OF 31-3-61.

N.V. KON. MIJ. „DE SCHELDE“ VLISSINGEN	BESTEMMING: LLOYD'S REG.
AFDELING: SCHEEPSBOUWTEKENINGEN	60192
BENAMING: GUANG-MING	
MIDSHIP-SECTION.	
SCHAAL: 1:25	STUK: 1
OPDRACHT: 00327	HOOFD: 002
VERDER & CO.	

Guang Ming. ★

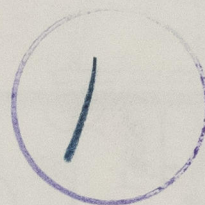
2

M/M.

12339.

MIDSHIP - SECTION

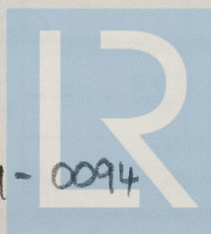
RECORDS DEPT.,
LONDON.



1 012333-012339-0094

1

012333-012339-0094



© 2021

Lloyd's Register
Foundation