

- 1 MAY. 1954

Index No. _____
(For London Office only.)

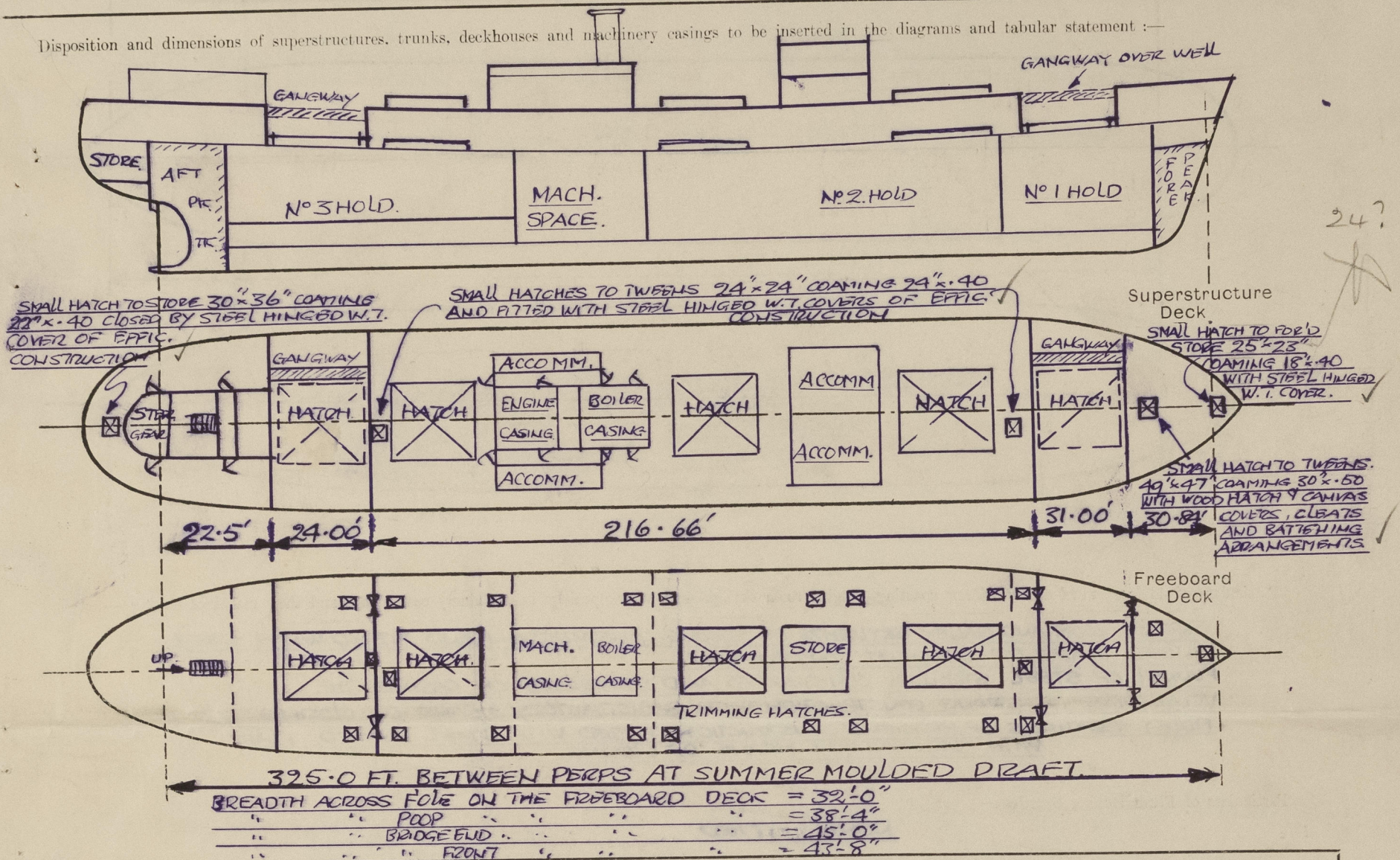
Lloyd's Register of Shipping.

SURVEYS FOR FREEBOARD.

(CONDITIONS OF ASSIGNMENT.)

Ship's Name S.S. TORNAGALEONES Port of Survey HAMBURG
 Official Number (EX. OTTO PERTERSEN) Surveyor's Signature E. Flynn
 Nationality and Port of Registry CHILEAN - VALPARAISO Date of Survey 12th, 13th, 14th and 15th April 1954

Disposition and dimensions of superstructures, trunks, deckhouses and machinery casings to be inserted in the diagrams and tabular statement :-



Particulars of Superstructures, Trunks, Casings, Deckhouses.

	Coaming	Plating	Stiffeners	Spacing	End Attachments of Stiffeners	Size of Openings	Height of Sills	Height of Casings
Poop Bulkhead ...	NONE	.40	8"x3"x.42 B.A.'s	30"	BRKTS. TOP AND BOT.	NONE	-	8'-0"
Raised Quarter Deck Bulkhead ...	NONE	.40	4 1/2"x3"x.40 O.A.'s	30"	NONE	22 54"x36"	22"	8'-0"
Bridge, After Bulkhead ...	NONE	.40	8"x3"x.42 B.A.'s	30"	BRKTS. TOP & BOT.	22 52"x37"	24"	8'-0"
Bridge, Forward Bulkhead ...	NONE	.35	4"x3"x.40 O.A.'s	30"	NONE	22 46"x31"	27"	8'-0"
Forecastle Bulkhead ...	NONE	.35	4"x3"x.40 O.A.'s	30"	NONE	22 46"x31"	27"	8'-0"
Trunk, Aft ...	✓							
Trunk, Forward ...	✓							
Exposed Machinery Casings on Freeboard or Raised Quarter Decks ...	✓							
Exposed Machinery Casings on Superstructure Decks ...	NONE	.42	3"x2 1/2"x.30 O.A.'s	25"	NONE BUT DEEP BEAM KLEES ARE FITTED TO CASING IN WAY OF GIRDERS.	22 60"x25"	18"	7'-3"
Machinery Casings within Superstructures not fitted with Class I Closing Appliances ...	NONE	.40	3"x.40 EW. FLATS.	25"	NONE	NONE	-	8'-0"
Deckhouses on Flush Deck Ships ...								

Particulars of Closing Appliances (state if capable of being manipulated from both sides).

Poop Bulkhead ...	NO OPENINGS
Raised Quarter Deck Bulkhead ...	✓
Bridge, After Bulkhead ...	TWO TONNAGE OPENINGS (PIS) CLOSED BY PORTABLE STEEL PLATES SECURED IN PLACE BY HOOK BOLTS SPACED ABOUT 16" CR. TO CR.
Bridge, Forward Bulkhead ...	STEEL HINGED W.T. DOORS (PIS) CAPABLE OF BEING OPERATED BOTH SIDES.
Forecastle Bulkhead ...	TWO TONNAGE OPENINGS (PIS) CLOSED BY PORTABLE STEEL PLATES SECURED IN PLACE BY HOOK BOLTS SPACED ABOUT 16" CR. TO CR.
Exposed Machinery Casings on Freeboard or Raised Quarter Decks ...	✓
Exposed Machinery Casings on Superstructure Decks ...	STEEL HINGED DOORS (PIS) TO STOKEHOLD OPERATED FROM BOTH SIDES. (SEE ALSO IN COMPANIONWAYS)
Machinery Casings within Superstructures not fitted with Class I Closing Appliances ...	NO OPENINGS
Deckhouses on Flush Deck Ships ...	✓

Fornagatones

ENGINE ROOM AND GALLEY SKYLIGHTS OF STRONG CONSTRUCTION AND FITTED WITH STEEL HINGED FLAPS OF EFFICIENT CONSTRUCTION.

FUNNEL OF STEEL STRONGLY CONSTRUCTED AND SUPPORTED ON CASING TOP.

VENTILATORS OF STRONG CONSTRUCTION WITH SATISFACTORY MEANS OF CLOSING.

FOLEY GRATINGS OF EFFICIENT CONSTRUCTION FITTED WITH STEEL HINGED FLAPS WITH SATISFACTORY MEANS OF CLOSING.

NONE FITTED.

FORECASTLE DECK LED TO SPACES UNDER - 2OFF-8" DIA X 34" x .40 COAMING AND 3"x3"-35 ANGLE TO DECK.

" " " " " " - 1P - 15" " x 35" x .42 " " " " " "

POOP DECK " " " " " " - 1PIS - 6" " x 28" x .30 " " " 3"x3"-30 " " "

" " " " " " - 1PIS - 15" " x 28" x .35 " " " 3"x3"-35 " " "

BRIDGE DECK " " " " " " - DESBRICK POST VENTS. IN WAY OF THE FORE AND MAIN MASTS
OF EFFICIENT CONSTRUCTION AND STAYED TO MAST TABLES 2FOOD RAFT.

BRIDGE DECK LED TO SPACES UNDER - 1PIS IN WAY OF FORECAST 16" DIA X 36" x .42 COAMING AND
5"x3"-40 ANGLE TO DECK.

FORECASTLE DECK	— 3" AND 4" DIA. GOOSENECKS	26"	TO LIP	✓
POOP	" — 3" AND 4" "	26"	" "	✓
BRIDGE	" — 2" 2" 3" 4" "	26"	" "	✓
MAIN DECK IN WELLS	— 4" "	42"	" "	

THE ABOVE AIR PIPES FITTED EITHER WITH STEEL HINGED W.T. FLAPS OR WOOD
PLUGS WITH CHAIN ATTACHMENTS AND CANVAS COVERS.
SNIFFING HOLES ARE ARRANGED IN GOOSENECK HEADS.

NONE FITTED ✓

FROM AFTER AND AMIDSHIP ACCOMM. AND SPACES ALL ABOVE THE FREEBOARD DECK LED THRO' SHIP'S SIDES PORT AND STARB'D, ABOVE THE FREEBOARD DECK THRO' 3", 2, 3/8" AND 4" AUTOMATIC NON-RETURN VALVES OF SUBSTANTIAL AND EFFICIENT CONSTRUCTION.

FROM AFTER ACCOMPL. AND SPACES ALL ABOVE THE FREEBOARD DECK LED THRO' SHIP'S SIDES (IPS) BELOW THE FREEBOARD DECK IN THE AFT PEAK TANK THRO' 4" AUTOMATIC NON-RETURN VALVES OF SUBSTANTIAL AND EFFICIENT CONSTRUCTION

6"x3" HOLES CUT IN THE GUNWALE ANGLES IN FORE AND AFTER WELLS (2 PZS IN EACH WELL)

9" DIA. SIDESCUTTLES IN WAY OF THE ACCOMMODATION
SPACES IN POOP TWEENS OF SUBSTANTIAL
CONSTRUCTION AND FITTED WITH EFFICIENT
DEADENDS PERMANENTLY ATTACHED.

Vertical distance of Sill of lowest Side Scuttle above top of keel APPROX. 31'-6"

Particulars of Guard Rails:—

GUARD RAILS ON FCE DECK	— 3 RDS — 40" HIGH WITH STANCHIONS SPACED ABOUT 60"
GUARD " " POOP " "	— 3 RDS — 40" " " " " " "
STEEL BULWARKS ON BRIDGE DECK	— 40" HIGH AND OF SUBSTANTIAL CONSTRUCTION.
" " IN FORE AND AFTER WELLS	53" HIGH OF " "

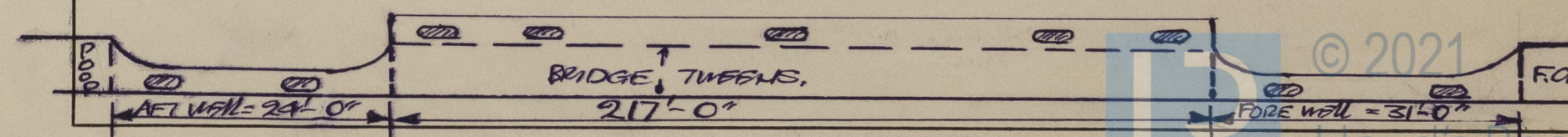
FORE AND AFT GANGWAYS OVER THE FORE AND AFTER WELLS JOINING THE POOP TO BRIDGE AND BRIDGE TO FORECASTLE OF STRONG AND BTTC. CONSTRUCTION. 8"x3" WOODEN RUNNERS REINFORCED WITH STEEL BANDS. GUARD RAILS 40" HIGH - 2 WIRE RUNNERS WITH STANCHIONS SPACED ABOUT 53"

Particulars of Freeing Arrangements.						
	Length of Bulwark	Height of Bulwark	Size of Freeing Ports	Number each side	Area each side	Rule area each side
After Well	24'-10"	53"	39" x 24"	2	11-28 10 11	9.0 1/2
Forward Well	31'-3"	53"	39" x 24"	2	11-28 1-39" 10 1/2	9.6 1/2

State position of each freeing port	{ After Well :— Forward Well :— }	SEE SKETCH.
(F. and A. position and height above deck edge)			

State whether the freeing ports are fitted with shutters, bars, or rails, and give particulars of such:—
FREEING PORTS IN WELLS ARE FITTED WITH ONE BAR AND STEEL HINGE SHUTTERS.
FREEING PORTS IN BRIDGE BULKHEADS FITTED WITH BARS ONLY
 Additional area where sheer is less than standard.

OPENINGS IN BR.DK. BUILDINGS = $36" \times 21"$ - 5 AT EACH SIDE. ACTUAL AREA 22.95 $\frac{1}{2}$
BRANDERICK BUILDINGS RULE AREA 21.70 $\frac{1}{2}$

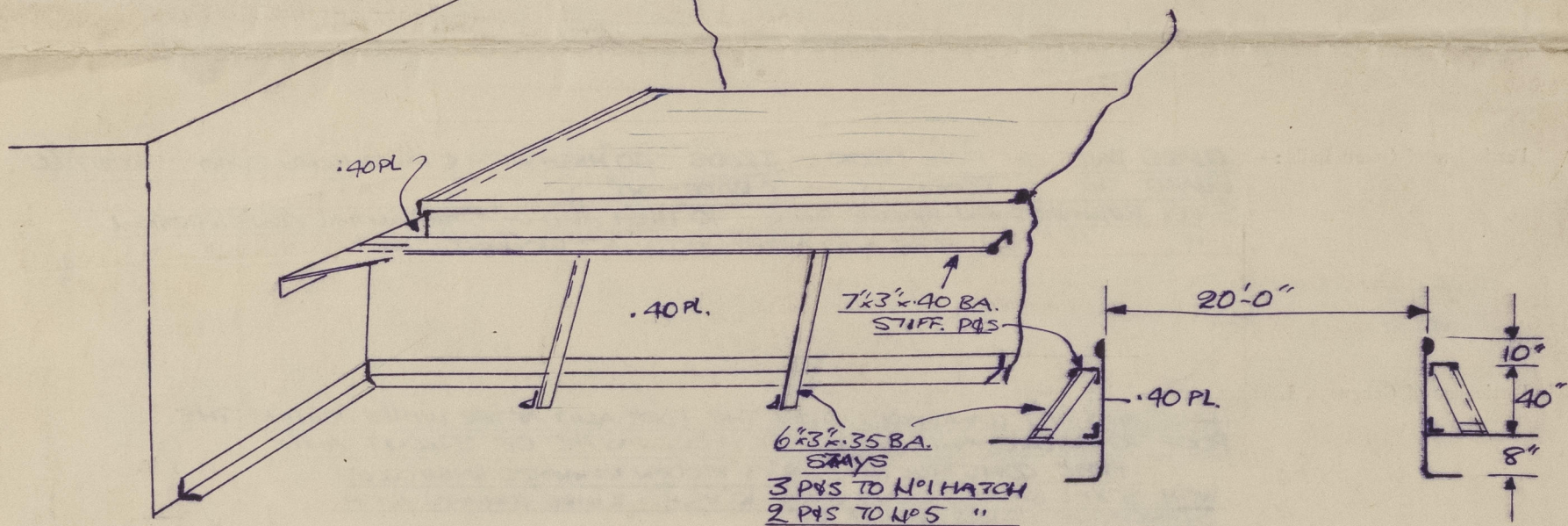


PARTICULARS OF PROTECTION TO OPENINGS, ETC.

		HATCHWAYS ON FREEBOARD AND SUPERSTRUCTURE DECKS.									
		BRIDGE DECK				FREEBOARD DECK					
Description of Hatchway		Nº 2	Nº 3	Nº 4	Nº 1 IN FORD WELL	Nº 2 IN TWEENS	Nº 3 IN TWEENS	Nº 4 IN TWEENS	Nº 5 IN AFTER WELL	TRIMMING HATCHES	
Dimensions of Hatchway		33'-4" x 20'-0"	25'-0" x 20'-0"	31'-3" x 20'-0"	25'-0" x 20'-0"	33'-4" x 20'-0"	25'-0" x 20'-0"	31'-3" x 20'-0"	20'-10" x 20'-0"	24 1/2" x 30"	
COAMINGS	Height above Deck	35"	35"	35"	4'-2"				4'-2"	9' x 3"	
	Thickness	.40	.40	.40	.40				.40	.42	
	Sides										
	Ends										
Stiffeners		7 x 3 x 40 BA STIFFS. ALL ROUND	7 x 3 x 40 BA STIFFS. ALL ROUND	7 x 3 x 40 BA STIFFS. ALL ROUND	7 x 3 x 40 BA STIFFS. ALL ROUND				7 x 3 x 40 BA STIFFS. ALL ROUND		
Brackets, Stays		306" BA STAYS AT SIDS	236" BA STAYS	306" BA STAYS	306" BA STAYS				206" BA STAYS		
HATCH BEAMS	Number	5	4	5	4	5	4	5	3	NONE	
	Spacing	5'-6 1/2"	5'-0"	5'-2 1/2"	5'-0"	5'-6 1/2"	5'-0"	5'-2 1/2"	5'-0"	-	
	Scantling and Sketch	15 1/2" x 45	14" x 42	14" x 40	18" x 40	18" x 40	18" x 40	18" x 40	18" x 40	-	
	Bearing Surface	BEAMS FITTED WITH BOX ENDS SUPPORTED IN CAST SOCKETS AS PER SKETCH. ✓									
FORE AND AFTERS	Number										
	Spacing										
	Unsupported Lengths										
	Scantling* and Sketch	NO FORE AND AFTERS FITTED ✓									
HATCH COVERS	Material	PINE									
	Thickness	2 1/2"	2 1/2"	2 1/2"	3"	3"	3"	3"	3"	2 1/8"	
	How fitted	FORE AND AFT									
	Bearing Surface	3" MINIMUM									
Spacing of Cleats		24" & 6" FROM CORNERS ✓									
Number of Tarpaulins		3	3	3	3	1	1	1	3	1	
*Are wood fore and afters steel shod at all bearing surfaces?		NO FORE & AFTERS. ✓									
Are battens and wedges efficient and in good condition?		YES. ✓									
Are tarpaulins in good condition and in accordance with rule requirements?		YES. ✓									
Are lashings provided in accordance with rule requirements?		YES. ✓									

Particulars of any special features:—

ATTACHMENT OF Nº 1 AND 5 HATCH ENDS TO SUPERSTR. BIDS. IN WELLS.



THE HATCH COAMING SIDES OF BRIDGE DECK HATCHWAYS SIMILAR TO ABOVE.
THE " " ENDS " " " " ARE STIFFENED BY 7 x 3 x 40 BA.
AND SUPPORTED BY THE WINCH SEATINGS AT FORD END AND AFT ENDS OF
Nº 3 AND 4.