

SCANTLING SECTIONS

LENGTH. O. A. 116'-6"
 LENGTH. B. P. 109'-0"
 BREADTH. MLD. 30'-0"
 DEPTH. MLD. 13'-3"
 DRAFT. (MEAN) 10'-9 5/8"

FRAMES SPACED 21' APART FROM AFT TO FORWARD
 ENGINE ROOM BHD. REMAINING FRAMES 18' APART.

CAMBER. MAIN & BOAT DECKS. 7 1/2" IN 30'-0"

CLASS + A.I. TUG FOR RIVER HOOGHLY SERVICE WITH DESCRIPTIVE NOTATION "FIRE FIGHTING"

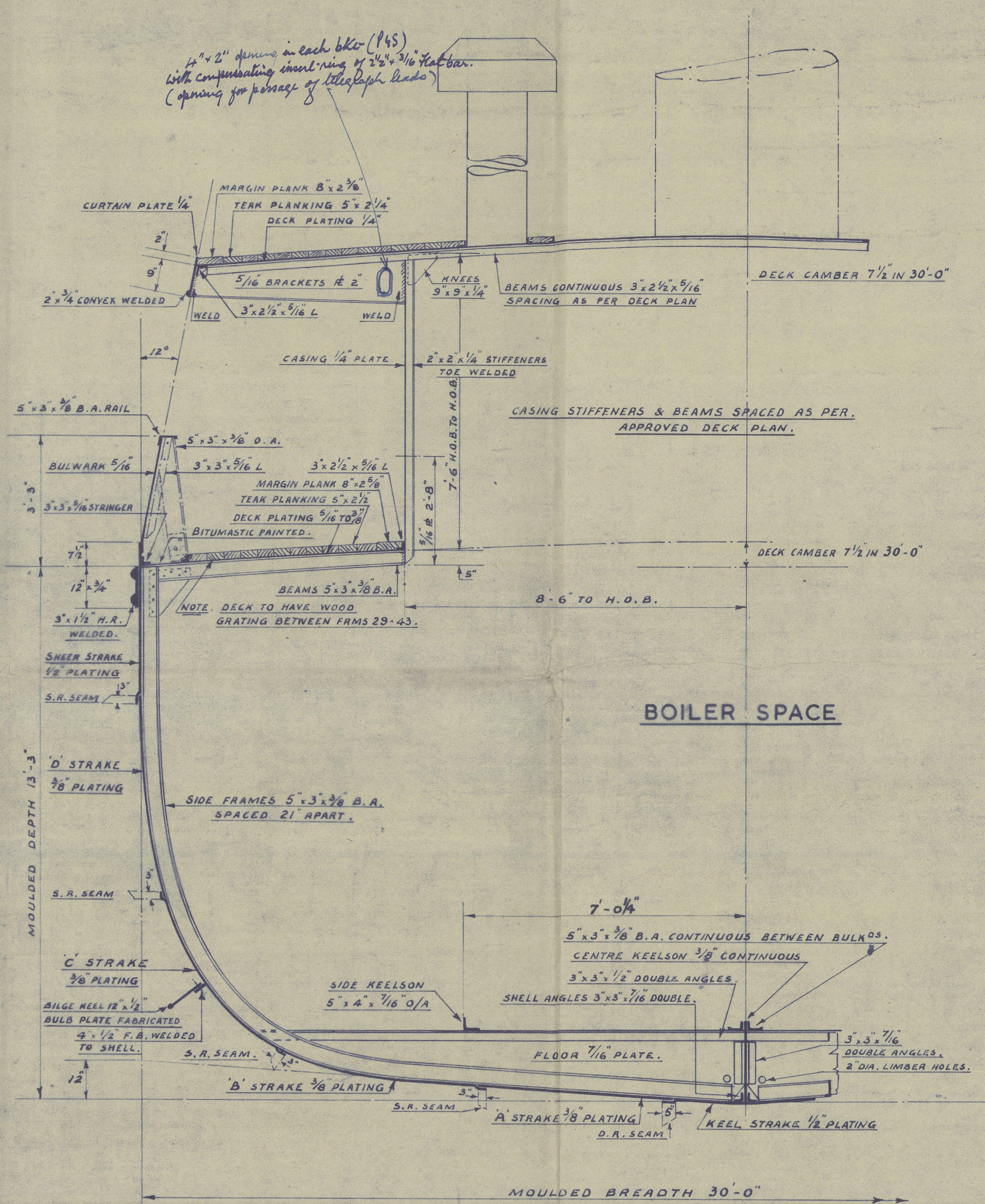
EQUIPMENT

2-STOCKLESS ANCHORS EACH 10 CWTs.
 1-STOCKLESS ANCHOR SPARE.
 1-STOCKLESS ANCHOR 2 1/2 CWTs.
 2-EACH 120 FATHOMS "TAYCO" STUD LINK
 STEEL CABLES 1 1/8 DIA.
 8-15 FATHOM LENGTH OF 1 1/8 DIA. "TAYCO" STUD
 STUD LINK STEEL CABLE.

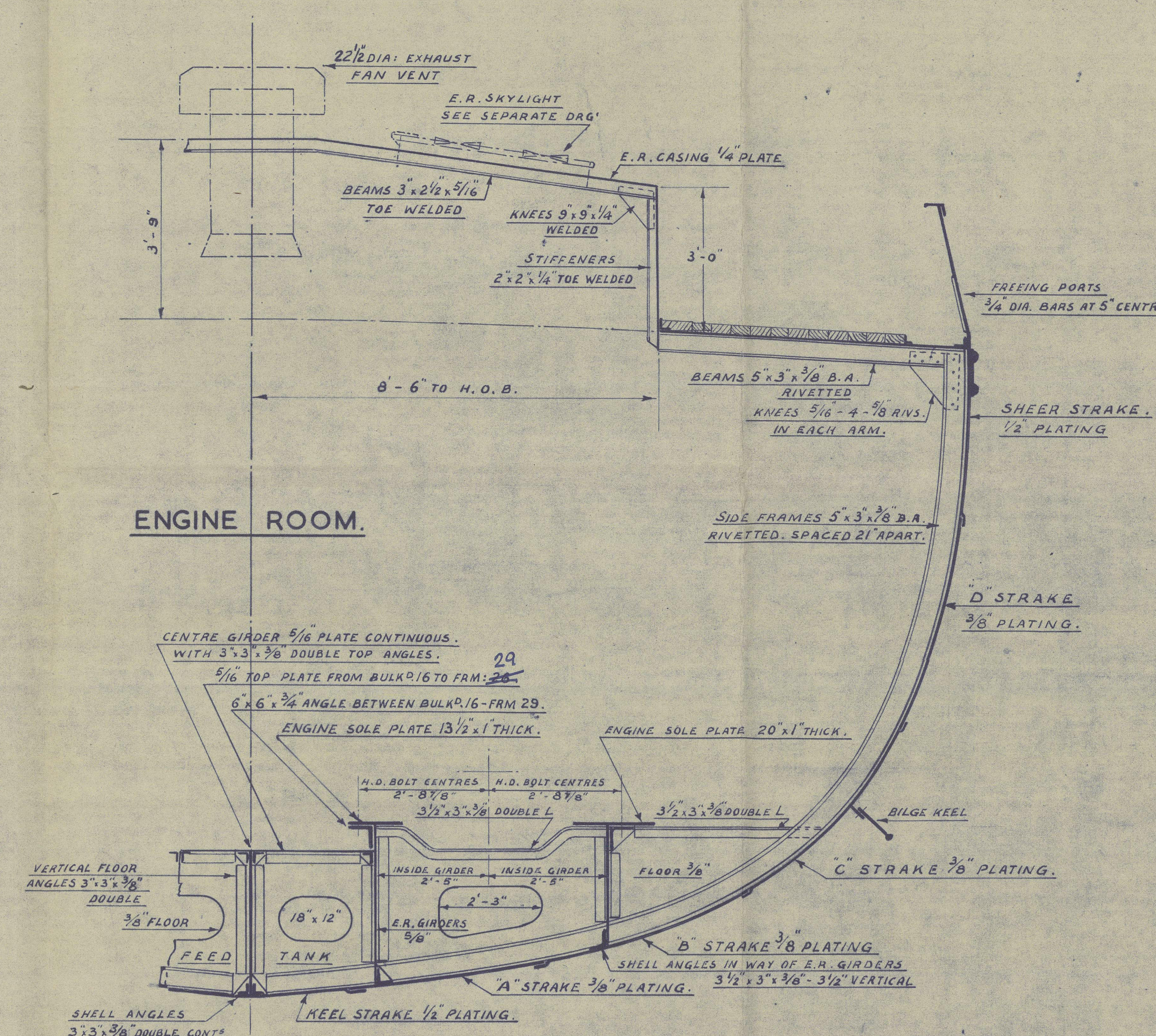
WEIGHTS:-

LIGHT SHIP. (BOILER IN WORKING CONDITION)	= 482.48 TONS
OIL FUEL.	= 30.00 "
FEED WATER.	= 16.00 "
FRESH WATER.	= 15.00 "
DIESEL OIL.	= 0.50 "
PROVISIONS.	= 0.20 "
COAL	= 1.00 "
CREW & OFFICERS.	= 3.00 "
DEEP LOADED DISPLACEMENT.	= 548.18 "

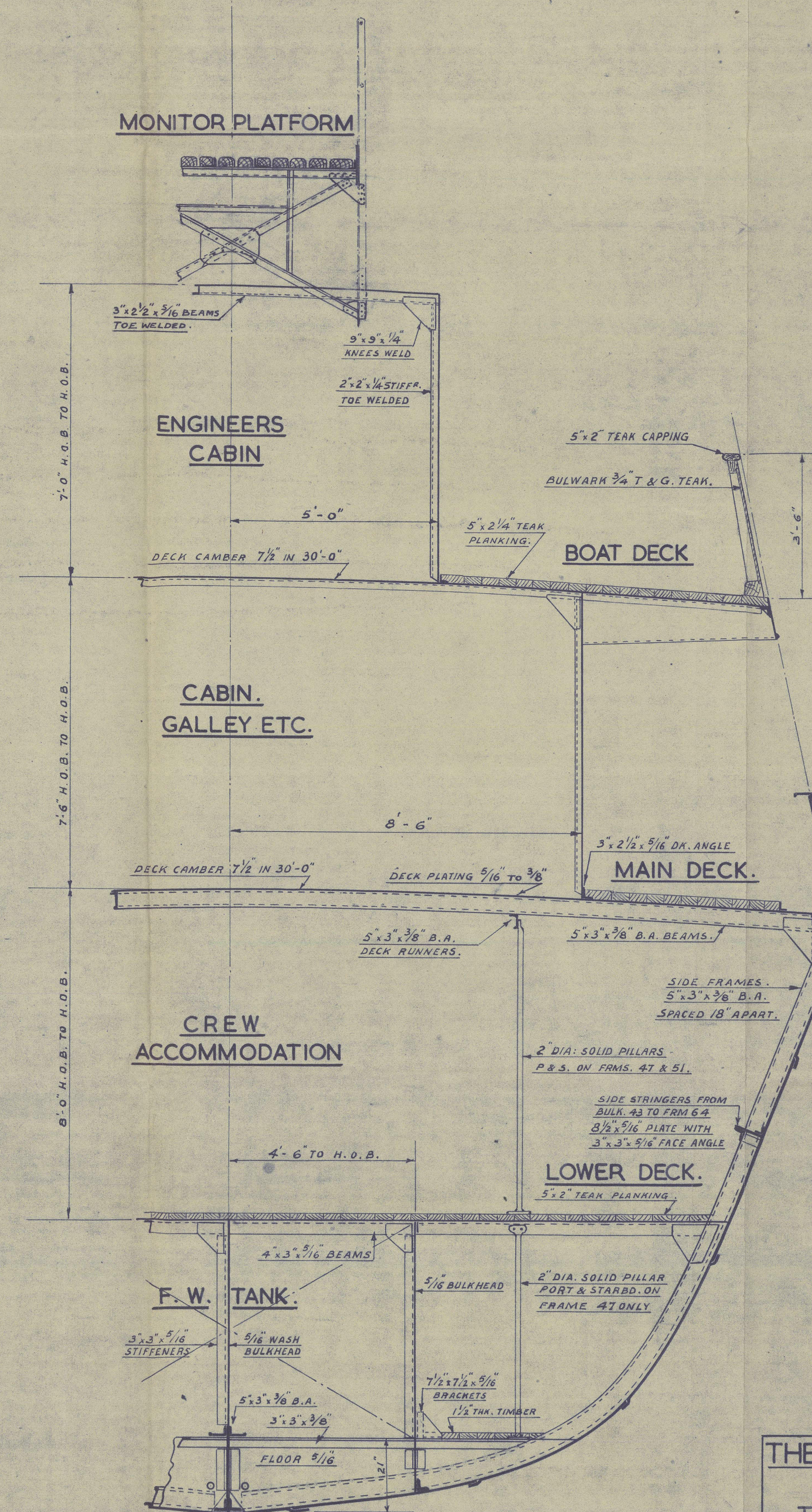
MEAN DRAFT. = 10'-9 5/8" = 3.292 M.



SECTION AT FRAME 32. LOOKING FOR.



SECTION AT FRAME 23. LOOKING AFT.



SECTION AT FRAME 47. LOOKING AFT.

THE COMMISSIONERS FOR THE PORT
 OF CALCUTTA
 TWIN SCREW STEAM TUG & FIREFLOAT
 "AGNIJOY."

INDENT No. BUILDERS SHIP No. 4142.
 CONTRACT No. CONTRACT DATE
 THE HOOGHLY DOCKING & ENG. CO. LTD.
 6 HOWRAH ROAD. SALKIA. HOWRAH.
 SUB CONTRACTOR DRG. No.

TITLE SCANTLING SECTIONS

SCALE 1/2" = 1'-0" BUILDERS DRG. No. 4142-3/9

THE COMMISSIONERS
 FOR THE PORT OF
 CALCUTTA. 15 STRAND R.
 CALCUTTA, INDIA.

PLAN REGISTRY
 DRG. No.

REPRESENTATIVES SIGNATURE DATE



(5)

Calcutta: Rpt-I

Nº 20943

The Hooghly Dyeing & Eng Co Ltd.
Yard No. 4142.

RECORDS DEPT..
LONDON.

T.S. Lug "Agnijoy"



AS BUILT PLANS

"SCANTLING SECTIONS"

This plan has been verified with the approved plans, and includes any modifications and/or additions to the original approved arrangements made during construction which have been approved locally as being in accordance with or by standards equivalent to Rule requirements.

Signature *Hugh Cameron*
Surveyor(s) to Lloyd's Register of Shipping.

Date..... *2.11.62*



© 2021

Lloyd's Register
Foundation

012315 - 012323 - 0135