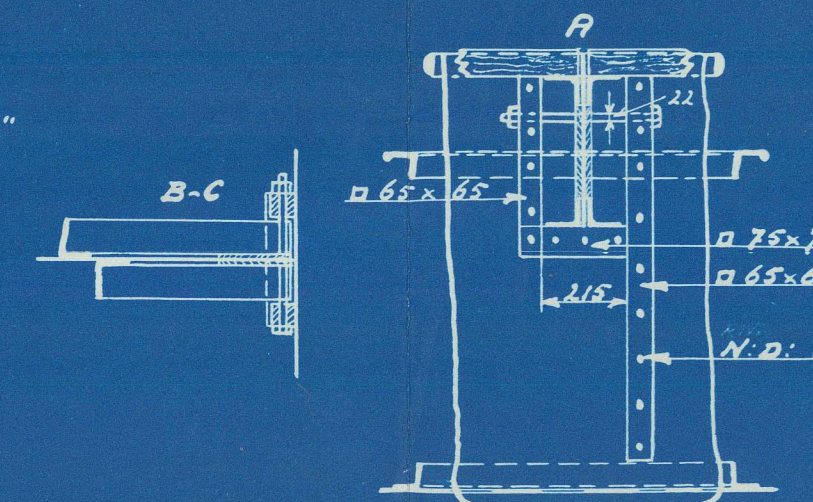
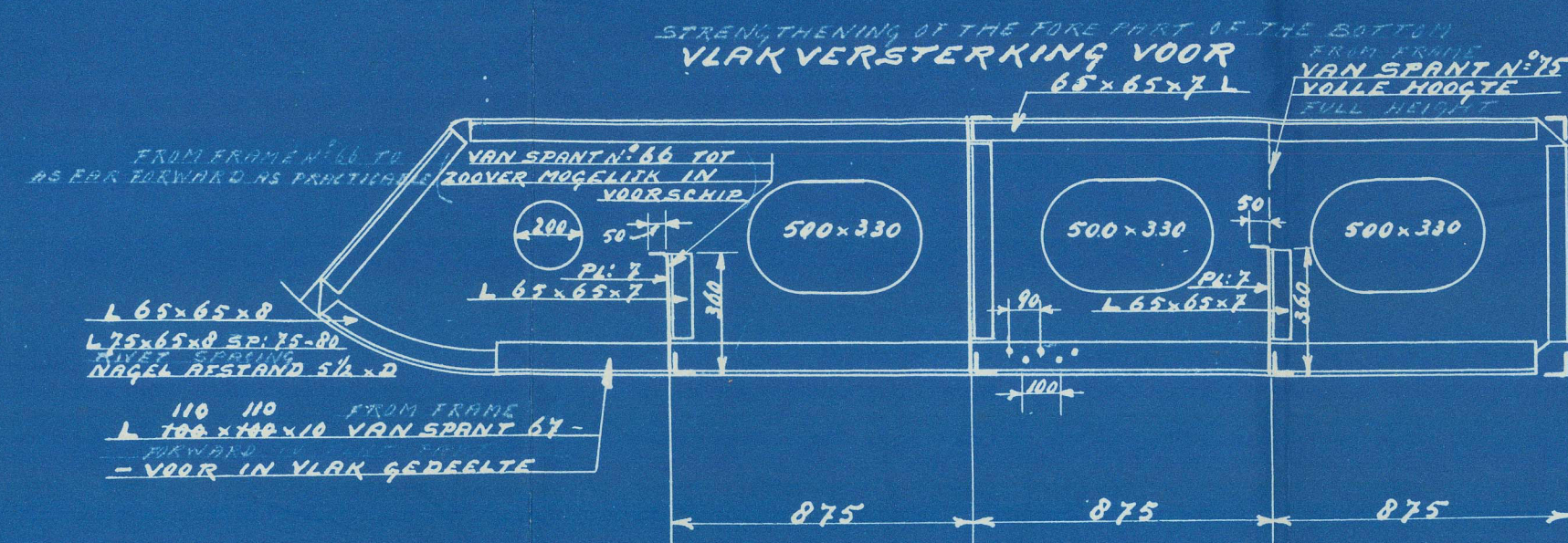


# LLOYD'S NUMMERS

$$\begin{aligned} L \times D &= 160,315 \times 11,011 = 1,893 \\ L \times (B+D) &= 160,315 \times (16,15 + 11,011) = 610,75 \\ \frac{L}{D} &= \frac{160,315}{11,011} = 13,57 \\ D &= 11,9 \frac{3}{4} \times 11,011; \quad d = 11,011 - 2,458 = 9,353 \\ d \frac{1}{2} L \text{ VORR} &= 12,992 - 2,458 = 10,534 \\ d \text{ SPANT} &= 14,029 - 2,458 = 12,371 \\ d \text{ VERNODD DEX} &= 9,353 + 3,609 = 12,962 \end{aligned}$$
[illegible]

12 1965 05. MIDNIGHT PLATES BUTTS STAMPED  
 STUIKEN 12 KANTPLATEN GLAD  
 ALL OTHER END 1973 BUTTS LAPPED  
 ALLE OVERIGE " OVERLAAT  
 SERVIS 10 V. BOTTOM PLATING IN WAY OF OIL FILL AND  
 LANDEN 02 VLAKPLATEN BIJ OLIE TANKS EN  
 FORWARD 01 2 LANDINGSBANK DOUG C. SUETED  
 VOOR 1/2 L. DOUBEL GEKONKEN





M/S. "KENTISH COAST"

WERF JAN SMIT, CN.  
YARD N° 523.

ROTTERDAM REPORT  
No. 27040<sup>A</sup>

MIDSHIP SECTION.  
(AS BUILT.)



© 2021

Lloyd's Register  
Foundation

012306-012314-0200