

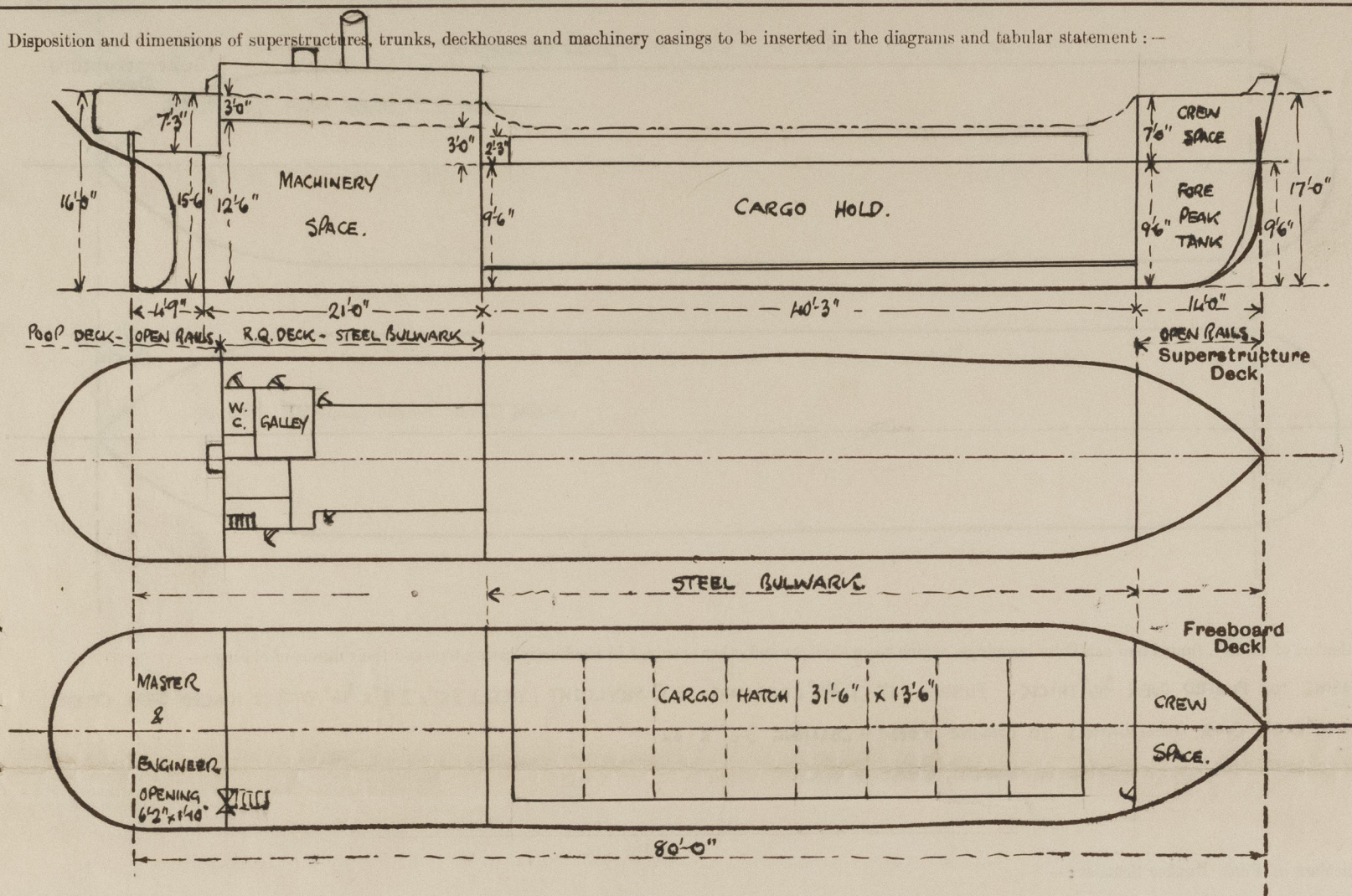
Lloyd's Register of Shipping.

Port of Survey Hull.

Surveyor's Signature *W. Macleod*

Date of Survey *During construction*

Disposition and dimensions of superstructures, trunks, deckhouses and machinery casings to be inserted in the diagrams and tabular statement :—



Particulars of Superstructures, Trunks, Casings, Deckhouses.

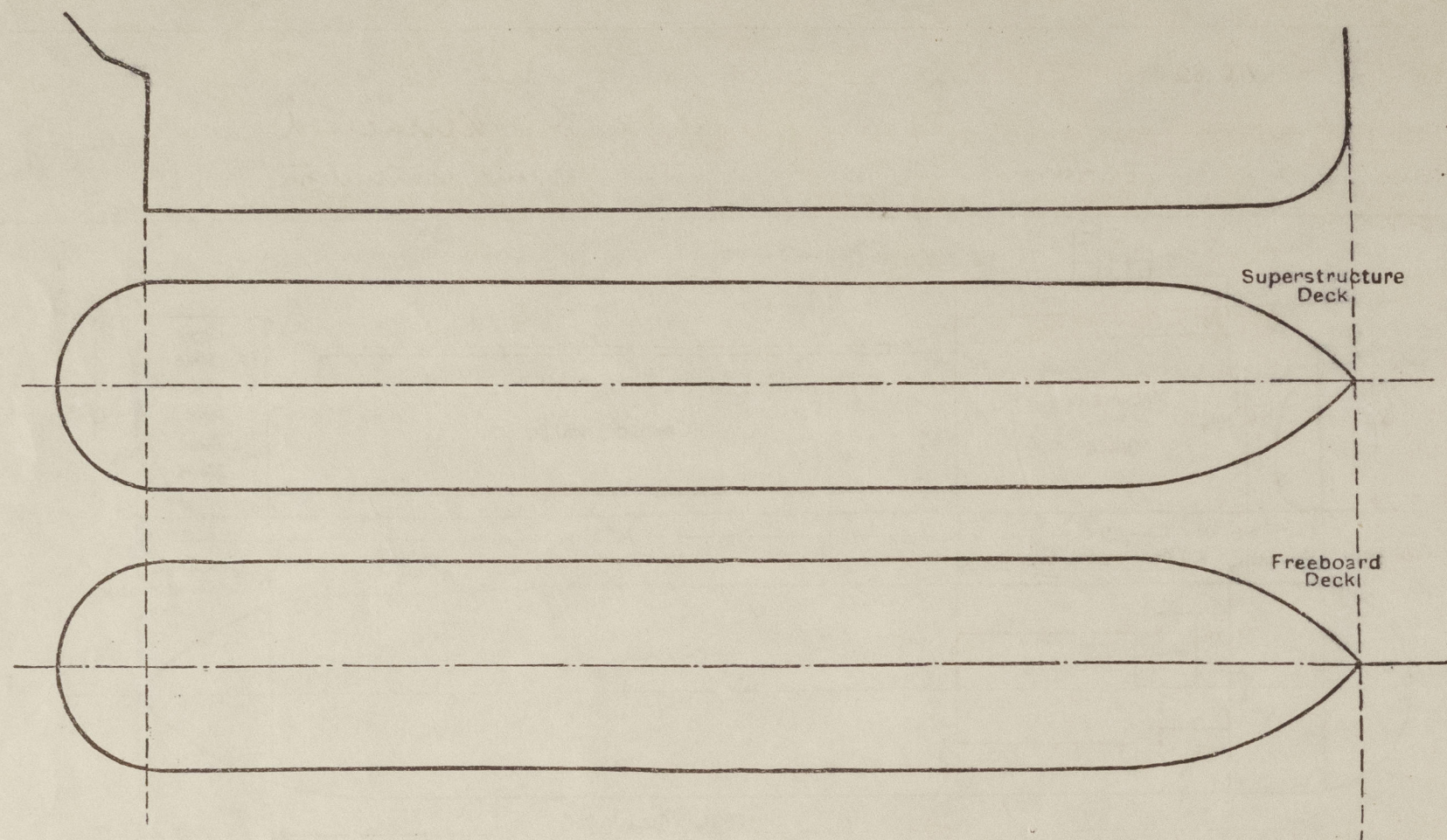
	Coaming	Plating	Stiffeners	Spacing	End Attachments of Stiffeners	Size of Openings	Height of Sills	Height of Casings
Poop Bulkhead	26	26	2½" x 2½" x 25"	30"	NONE	6'2" x 1'10"	7"	7'3"
Raised Quarter Deck Bulkhead ...	✓	26	5 x 3 x 30"	28½"	BKTS. TOP & BTM.	NONE	✓	3'0"
Bridge, After Bulkhead	✓							
Bridge, Forward Bulkhead	✓							
Forecastle Bulkhead	20	20	2½" x 2½" x 25"	30"	NONE	4'9" x 1'9"	19"	7'0" ✓
Trunk, Aft	✓							
Trunk, Forward	✓							
Exposed Machinery Casings on Deck- board or Raised Quarter Deck ...	✓	3/16"	2½" x 2½" x 30"	30"	BKTS. AT TOP.	4'6" x 1'9"	21"	6'9" ✓
Exposed Machinery Casings on Super- structure Decks	✓							
Machinery Casings within Superstruc- tures not fitted with Class I Closing Appliances	✓							
Deckhouses on Flush Deck Ships ...	✓							

Particulars of Closing Appliances (state if capable of being manipulated from both sides).

Poop Bulkhead	OPENING 6'-2" x 1'-10". NO DOOR (ENCLOSED BY DECKHOUSE). No openings exposed
Raised Quarter Deck Bulkhead	...	NONE	No openings
Bridge, After Bulkhead	...	✓	
Bridge, Forward Bulkhead	...	✓	
Forecastle Bulkhead	ONE WOOD DOOR 4'-9" x 1'-9" WITH SPRING LOCK & OPERATED FROM BOTH SIDES. ✓
Exposed Machinery Casings on Free-board or Raised Quarter Deck	ONE STEEL DOOR (PORT & STBD) " " " " " " " " © 2021
Exposed Machinery Casings on Super-structure Decks	✓
Machinery Casings within Superstructures not fitted with Class I Closing Appliances	✓
Deckhouses on Flush Deck Ships	✓

PARTICULARS OF PROTECTION TO OPENINGS, ETC.

The following diagrams should be used to indicate the positions of cargo and coaling hatchways, gangway, cargo and coaling ports, ventilators, companionways, etc., which would affect the seaworthiness of the ship:—



Particulars of fiddle, funnel and ventilator coamings, engine room skylight and other openings in machinery casing tops and their means of closing:—

CASING TOP PLATED OVER $\frac{3}{16}$ " THICK. FUNNEL - 18" X $\frac{3}{16}$ " COAMING. E.R. SKYLIGHT (STEEL) 3'0" X 2'4" X $\frac{3}{16}$ " WITH 2 HINGED STEEL COVERS.
2-10" DIAR. COWL VENTILATORS TO ENGINE ROOM - COAMING 3'0" X 32.
3-6" DIAR. MUSHROOM VENTS TO GALLEY, STORE & W.C.

Particulars of Flush Bunker Scuttles:—

R.Q. DECK. ONE FLUSH BUNKER SCUTTLE (P.S.). 18" DIAR. OF CAST IRON WITH BAYONET JOINTS & CHAIN ATTACHMENT.

Particulars of Companionways:— R.Q. DECK

TO ACCOMMODATION AFT (STBD. SIDE). PLATING $\frac{3}{16}$ " STIFFENERS 2 $\frac{1}{2}$ " X 2 $\frac{1}{2}$ " X 30" SPACED 30"
WOOD DOOR 4'6" X 1'8" - 2" SILL. OPERATED FROM BOTH SIDES.

Particulars of Ventilators in exposed positions on freeboard and superstructure decks:— UPPER DECK.

1-10" DIAR. COWL VENT. TO HOLD FORWARD (PORT SIDE). COAMING 36" X 32".

1-10" " " " " AFT END (STBD. SIDE). " " "

VENTILATORS SUPPLIED WITH WOOD PLUGS.

FORECASTLE DECK. 2-8" DIAR. COWL VENTS. TO CREW SPACE. COAMING 36" X 30.

& CANVAS COVERS.

POOP DECK. 1-6" " " TO OFF'S ACCOMMODATION AFT. " 36" X 30.

Particulars of Air Pipes in exposed positions on freeboard, raised quarter, or superstructure decks:—

TO FORE PEAK TANK 2" DIAR. 19" HIGH TO OPENING.

AIR PIPES SUPPLIED WITH WOOD PLUGS.

TO AFTER PEAK " 2" " (4" " " "

Particulars of Gangway Cargo and Coaling Ports:—

NONE.

Particulars of Scuppers and Sanitary Discharge Pipes:—

SCUPPERS. FROM UPPER DECK. 4-3 $\frac{1}{2}$ " X 2 $\frac{1}{2}$ " (P.S.). FROM R.Q. DECK. 2-3 $\frac{1}{2}$ " X 2 $\frac{1}{2}$ " (P.S.).

DISCHARGES. 4" DIAR. G.M. STORM VALVE TO W.C. (R.Q. DECK P.S.) - 1'8" FROM DECK TO BOTTOM OF OPENING.

2" " " " " GALLEY SINK " " 1'8" " " " " "

CONTROLLED FROM ABOVE. R.Q. DECK.

Particulars of Side Scuttles:—

NO SIDE SCUTTLES BELOW UPPER DECK.

Vertical distance of Sill of lowest Side Scuttle above top of keel

Particulars of Guard Rails:—

POOP & F.C. DECKS. STANCHIONS 3'0" HIGH SPACED 5'0" APART - 2 S.W.R.S.

UPPER & R.Q. DECKS. STEEL BULWARK.

Particulars of Gangways, Lifelines, etc.:—

NO GANGWAY.

LIFELINE FROM CASING FRONT TO FORECASTLE BULKHEAD - 1 $\frac{1}{2}$ " S.W.R. WITH STRETCHING SCREW.

Particulars of Freeing Arrangements.

	Length of Bulwark	Height of Bulwark	Size of Freeing Ports	Number each side	Area each side	Rule area each side
After Well (R.Q. DECK TO F.C. DECK)	40' 3"	3' 0"	4' 3" X 1' 0"	4	170 s.f.	1573 s.f. incl. 50% for no sheer
Forward Well (ON R.Q. DECK)	19' 3"	3' 0"	4' 6" X 1' 0"	2	86 s.f.	84 s.f.

State position of each freeing port ... (After Well:— FROM R.Q. DECK BMD. 1'0" - 10'9" - 20'6" - 30'0" POOP BMD. 1'0" - 10'9" - 16'4")
(F. and A. position and height above deck edge) Forward Well:— 2" ABOVE DECK EDGE.

State whether the freeing ports are fitted with shutters, bars, or rails, and give particulars of such:— 1- $\frac{3}{4}$ " DIAR. BAR.

Additional area where sheer is less than standard.

PARTICULARS OF PROTECTION TO OPENINGS, ETC.

HATCHWAYS ON FREEBOARD AND SUPERSTRUCTURE DECK									
Description of Hatchway			MAIN HATCHWAY						
Dimensions of Hatchway			31'6" x 13'6"						
COAMINGS	{	Height above Deck ...	27"						
		Thickness ...	3/16"						
		Sides ...	3/16"						
		Ends ...	3/16"						
		Stiffeners ...	9 x 3 x 3/8"						
		Brackets, Stays ...	6" x 30 PLATE SPACED 70"						
HATCH BEAMS	{	Number ...	7						
		Spacing ...	3'11"						
		Scantling and Sketch ...	I 8" x 5" x 28 lbs						
		Bearing Surface ...	3"						
FORE AND AFTERS	{	Number ...							
		Spacing ...							
		Unsupported Lengths ...							
		Scantling* and Sketch ...	NONE						
		Bearing Surface ...							
HATCH COVERS	{	Material ...	PINE						
		Thickness ...	2 1/2"						
		How fitted ...	F&A						
		Bearing Surface ...	3" x 2 3/16"						
Spacing of Cleats			24						
Number of Tarpaulins			2						
<p>*Are wood fore and afters steel shod at all bearing surfaces? <i>None.</i></p> <p>Are battens and wedges efficient and in good condition? <i>Yes</i></p> <p>Are tarpaulins in good condition and in accordance with rule requirements? <i>Yes.</i></p> <p>Are lashings provided in accordance with rule requirements? <i>Yes</i></p>									

*approved by MWT in view of moderate service
See correspondence with Vics 49*

Particulars of any special features :—

Endorsement at first survey and at surveys for renewal of Certificate :—

The fittings and appliances are in accordance with the particulars shown on this form (or as now modified) and are in good condition.



© 2021

Lloyd's Register
Foundation