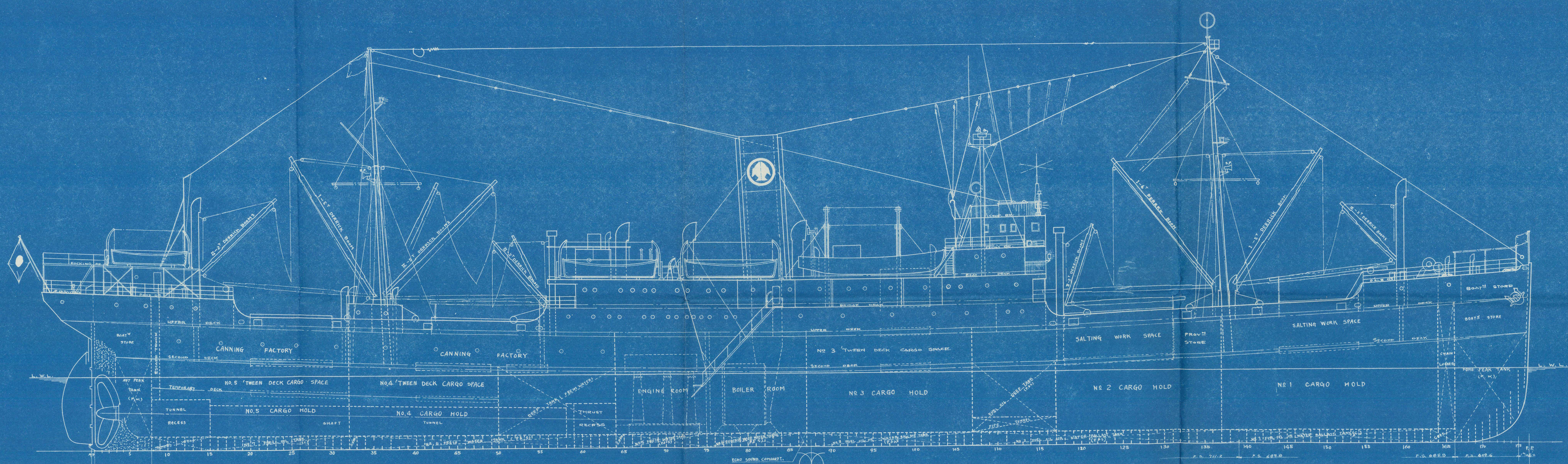


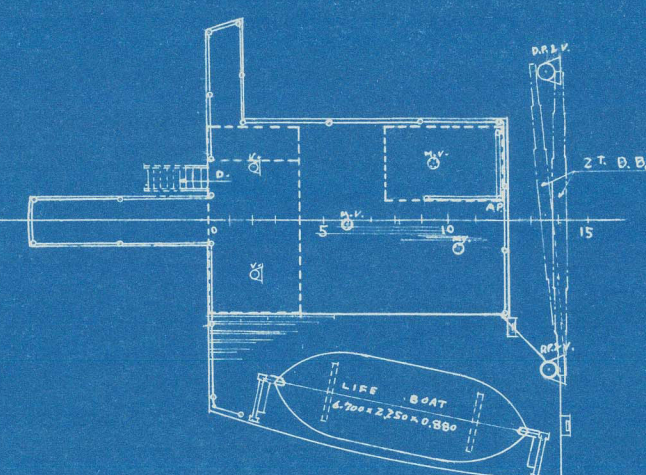
内面本圖

本圖は昭和30年4月12日三菱重工業株式會社横浜造船所にて改裝・修繕完了。

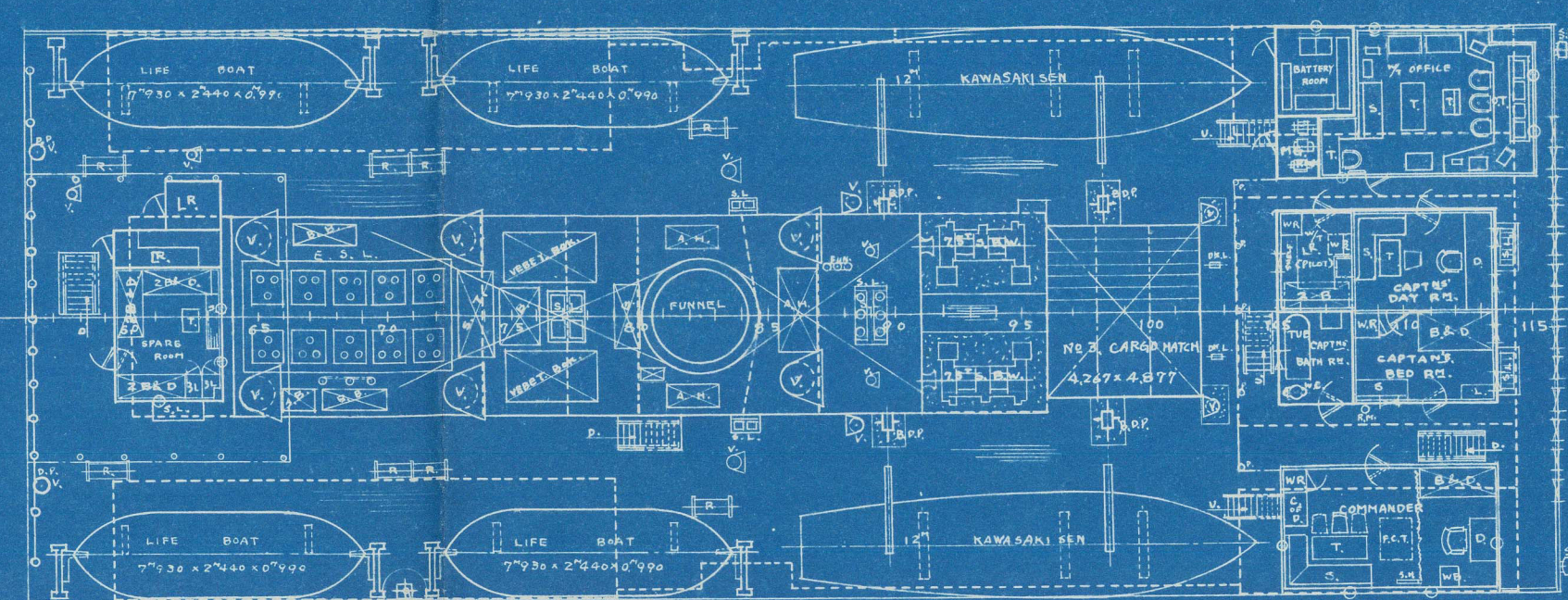


| PRINCIPAL PARTICULARS |        |
|-----------------------|--------|
| LENGTH (M)            | 123.44 |
| BREADTH (M)           | 15.83  |
| DEPTH (M)             | 9.23   |

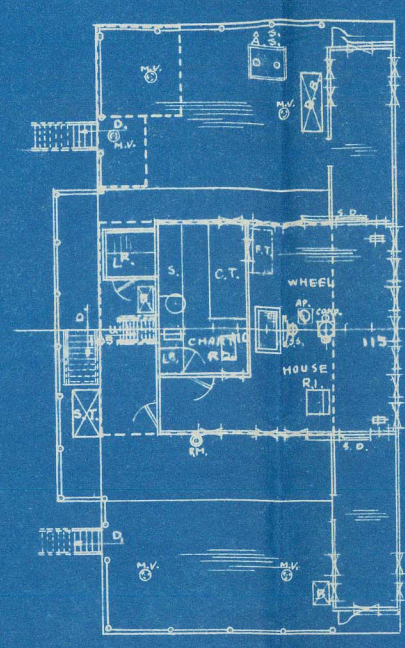
DOCKING BRIDGE



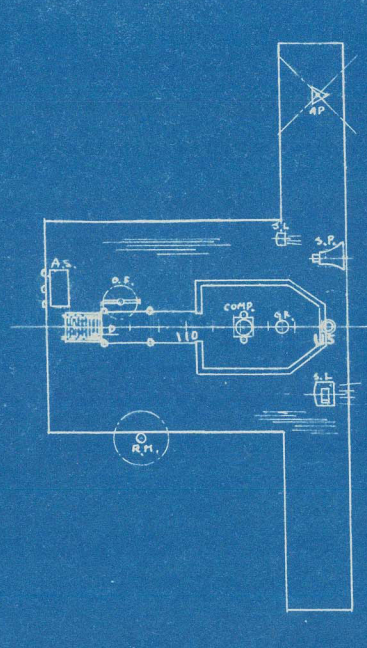
BOAT DECK



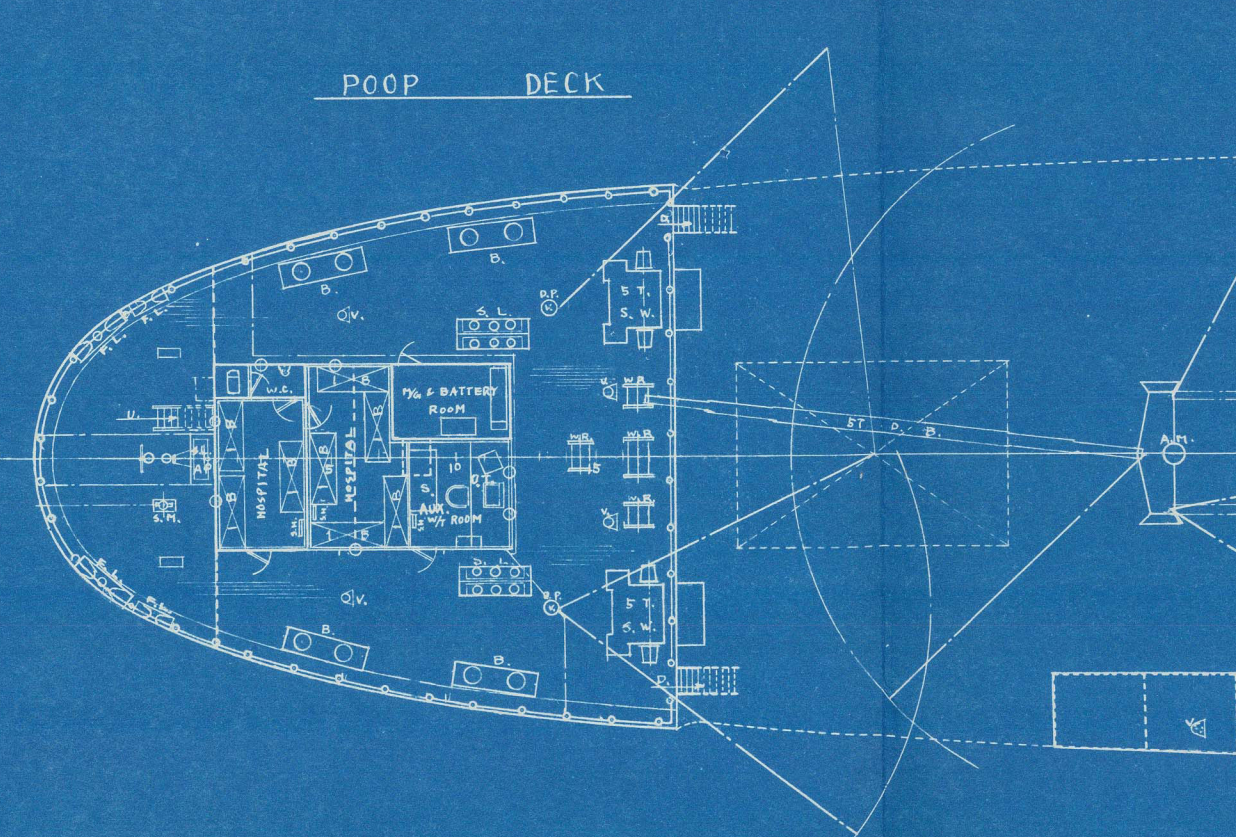
FLYING BRIDGE



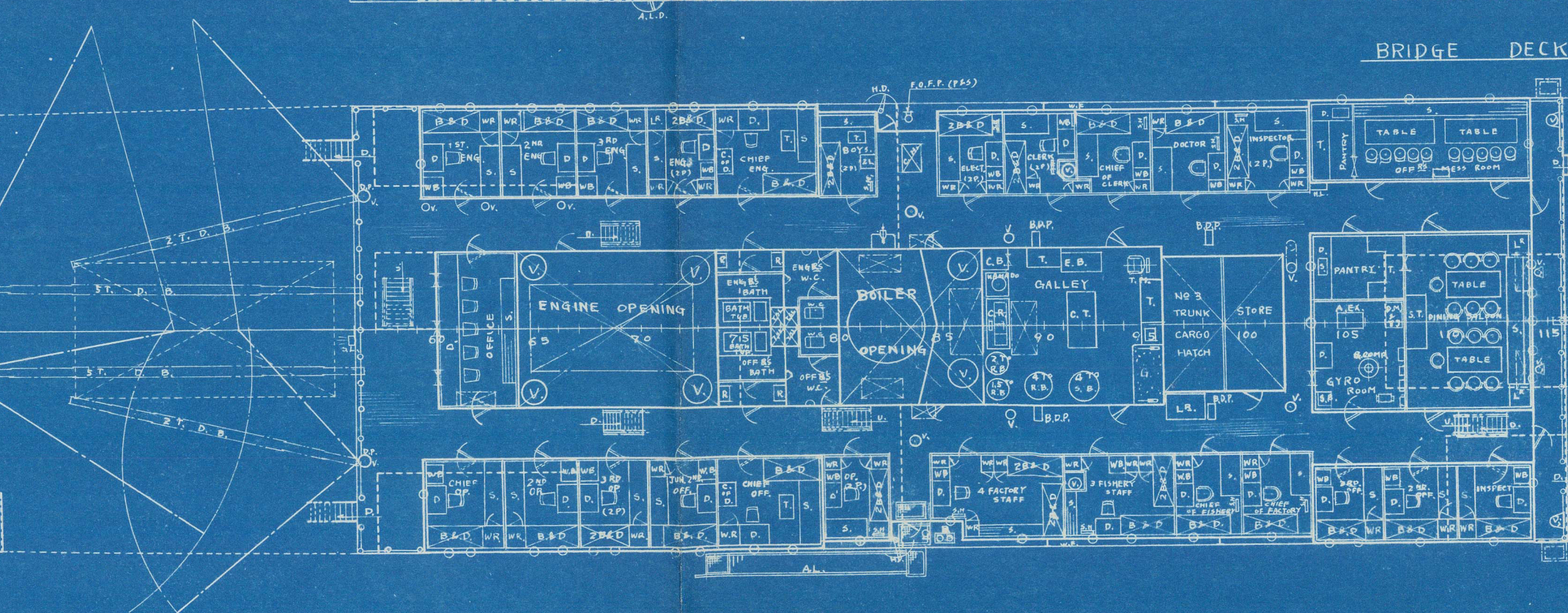
COMPASS BRIDGE



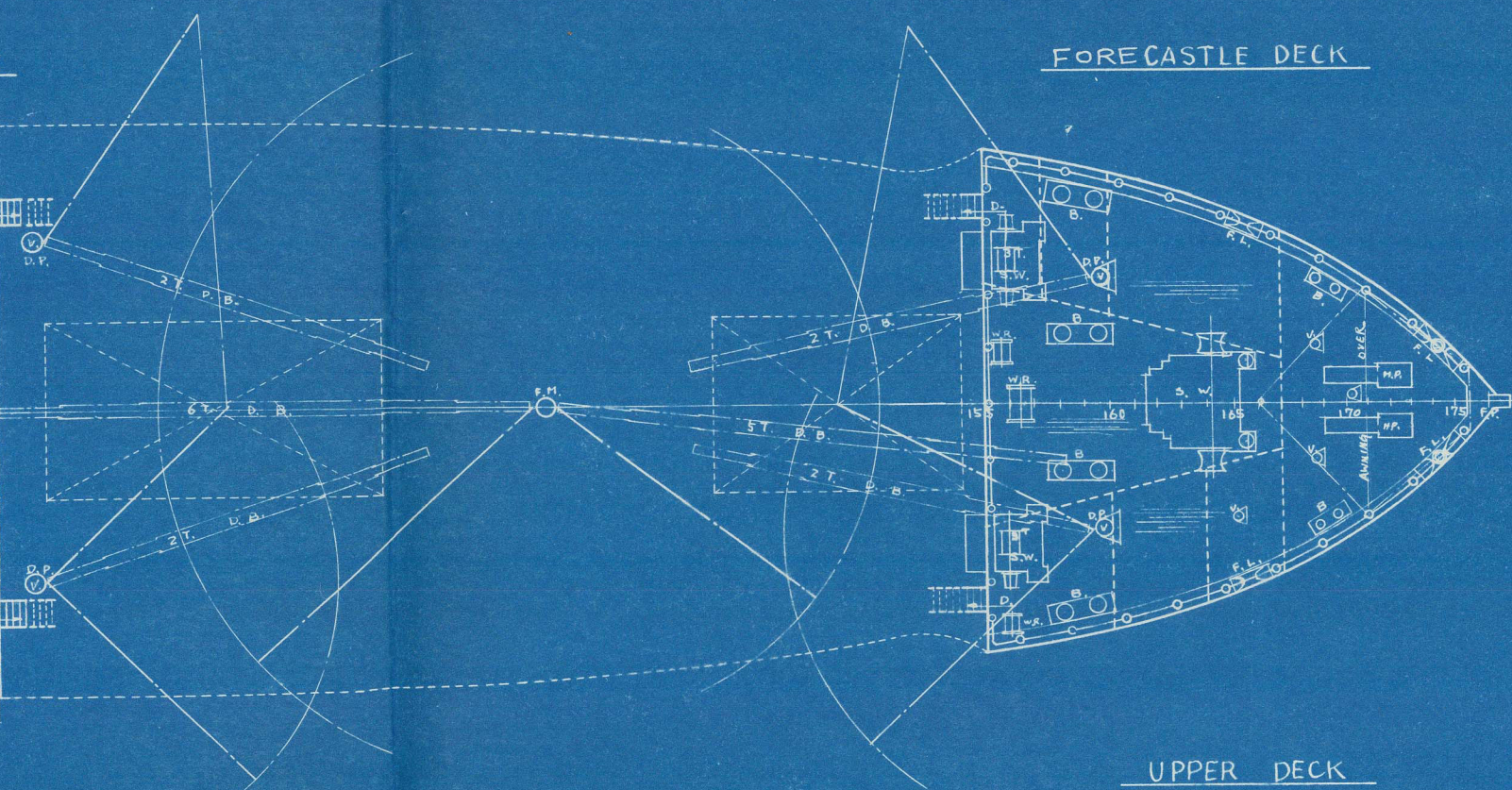
POOP DECK



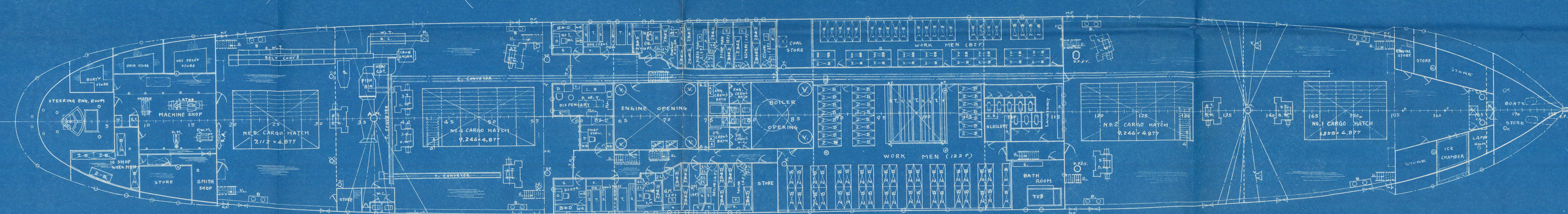
BRIDGE DECK



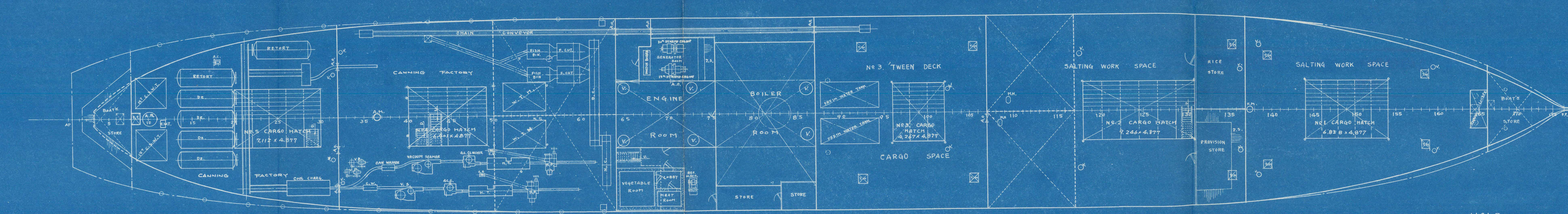
FORECASTLE DECK



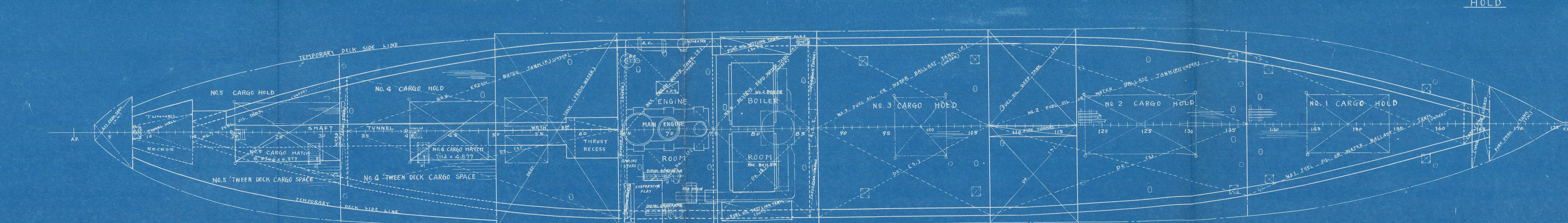
UPPER DECK



SECOND DECK



HOLD



R 5246  
TERUTAMA MARU

GENERAL  
ARRANGEMENT

FINISHED PLAN

SCALE 1:192 DATE DRAWN APR. 12, 1955

YOKOHAMA SHIPYARD  
& ENGINE WORKS  
MITSUBISHI NIPPON HEAVY INDUSTRIES, LTD.  
HULL DESIGNING DEPARTMENT

APPROVED  
CHECKED  
DRAWN  
TRACED  
DATE ISSUED  
DRAWING NO. A 55034

1955-04-12



General cargo.

"Torutama Maru"

TO ACCOMPANY *yka.* REPORT NO. 1656

DATED *4, 55*



Lloyd's Register  
Foundation