

# STEEL SINGLE SCREW MOTOR COASTER No 1270.

Dimensions 116' 0" B.P. x 21' 0" M.L.B. x 10' 0" M.L.B.

General Arrangement of Ironwork

Scale 1/4" = 1 Foot.

To be classed Lloyd's 100 A - Freeboard obtained from Lloyd's.

LLOYD'S NUMERALS:-

21 + 10 = 31 Transverse No.  
116 x 31 = 3596 Longitudinal No.

Equipment Number:-

Longitudinal No. = 3596

+ Raised Quarter deck = 104.1 L x H

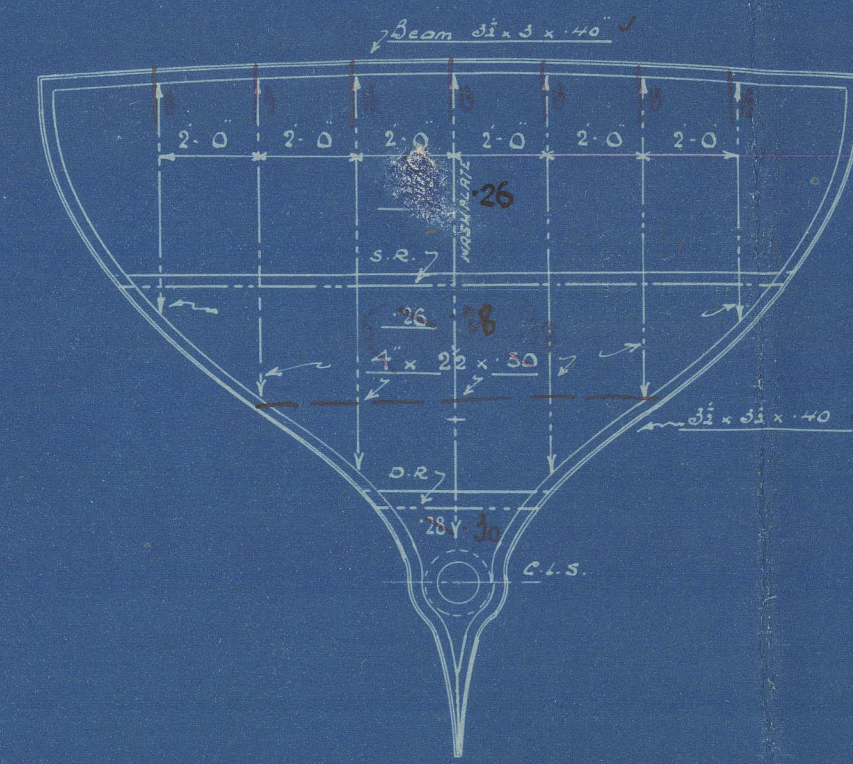
+ Forecastle Deck = 60.2 L x H x 15

+ After Deck = 35.2 L x H x 30

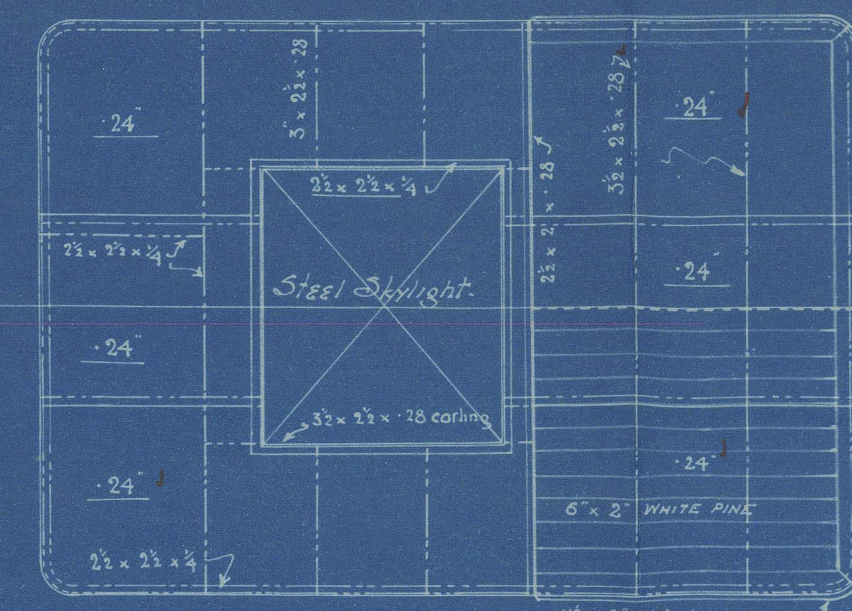
Equipment No. = 3812.2.

Equipment:-

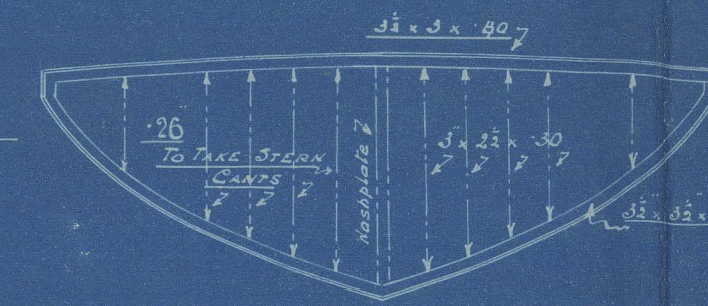
2 Power Anchors	each with 2000 lbs.
1 Stream Anchor	each with 2000 lbs.
Kedge	
Tainams	stud link chain cable.
	stud link stream chain.
Kemp Tawline	
Howser	
Warp	



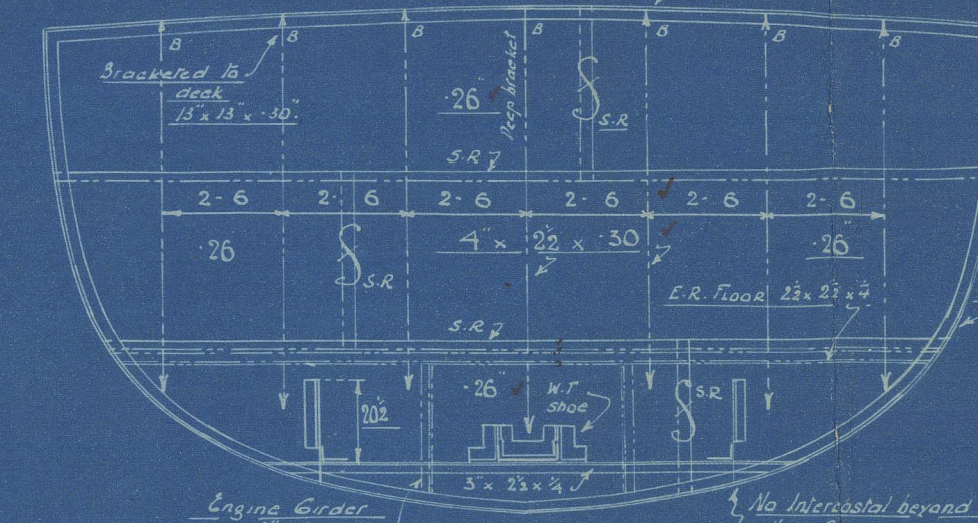
W.T. BULKHEAD AT FRAME 4  
LOOKING AFT  
Ballast Tank at aft side.



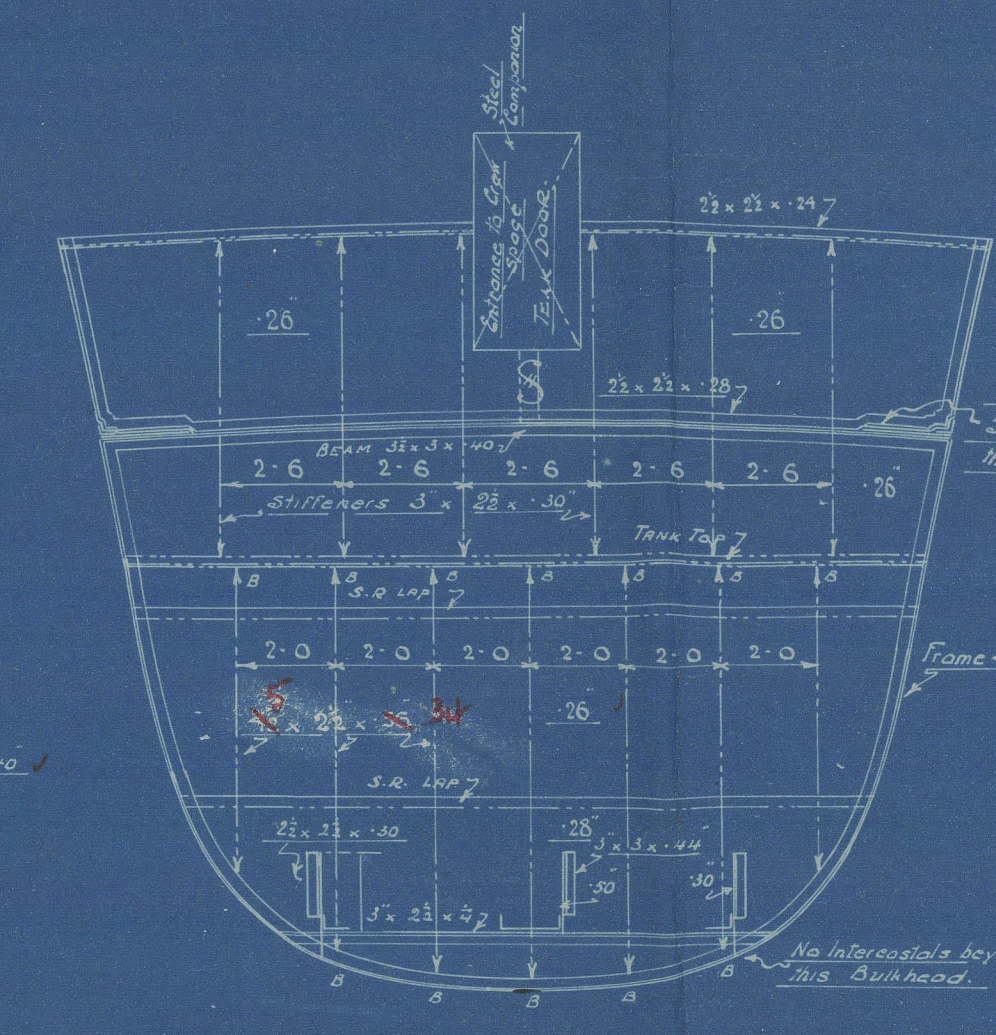
W.T. TRANSOM  
LOOKING AFT



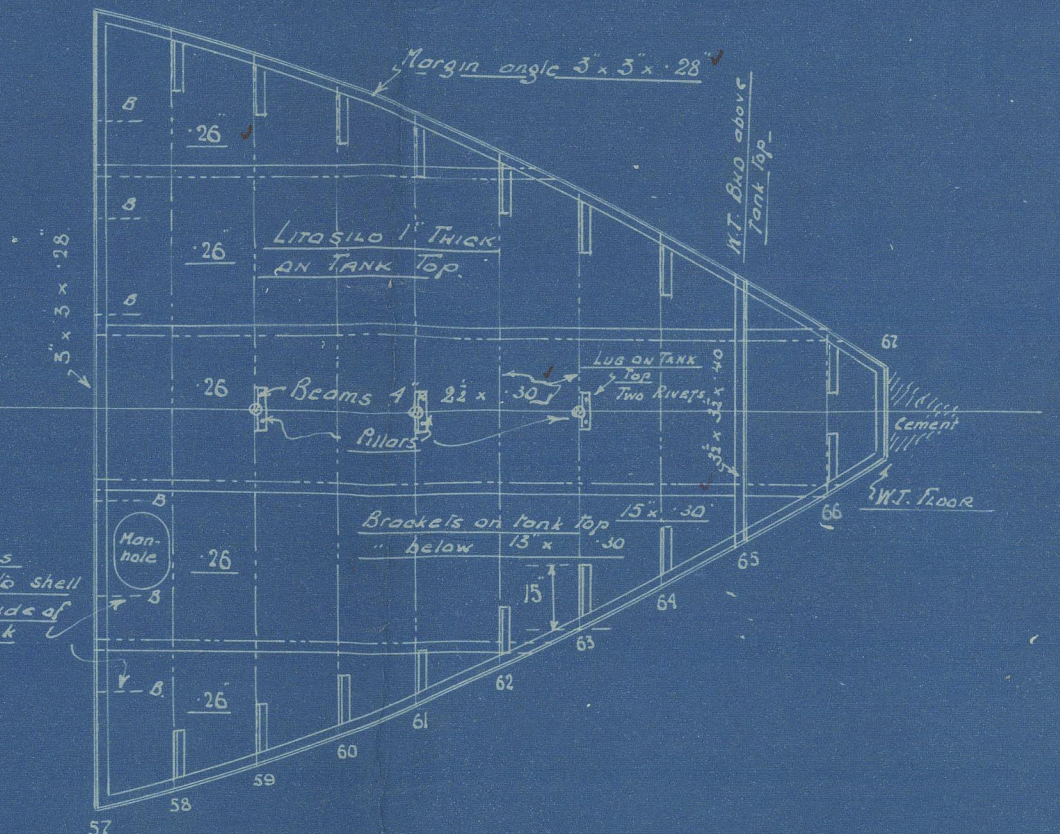
W.T. BULKHEAD AT FRAME 15  
LOOKING AFT



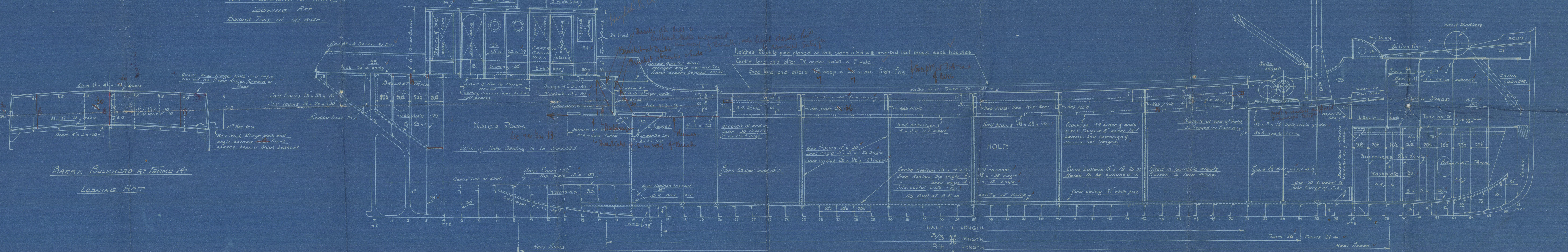
W.T. BULKHEAD AT FRAME 37  
LOOKING FORWARD



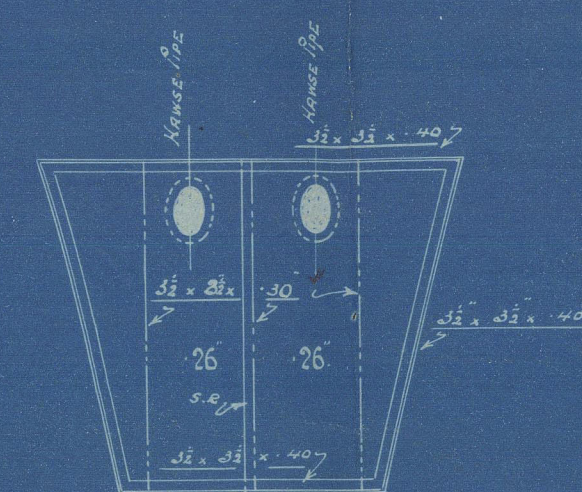
W.T. BULKHEAD AT FRAME 57  
LOOKING FORWARD



PLAN OF BALLAST TANK TOP



BREAK BULKHEAD AT FRAME 14  
LOOKING AFT



CARIN LOCKER END AT FRAME 65  
LOOKING FORWARD



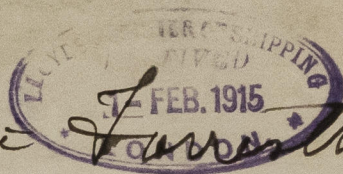
PLAN OF RAISED QUARTER DECK

PLAN OF FORECASTLE DECK

5/1/15  
KENNIE FORRETT SHIPBUILDING  
ENGINEERING AND DRY DOCK Co. LIMITED



Bennet *Lutona*

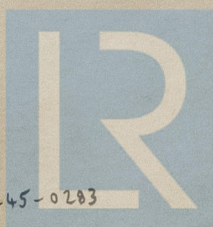
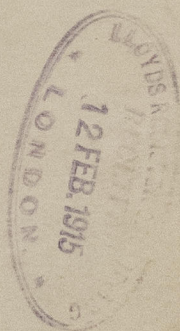


S. S. 1270 (LUTONA)

Profile

London Report No. 80053

RETAIN



© 2021

Lloyd's Register  
Foundation

012236-012245-0283