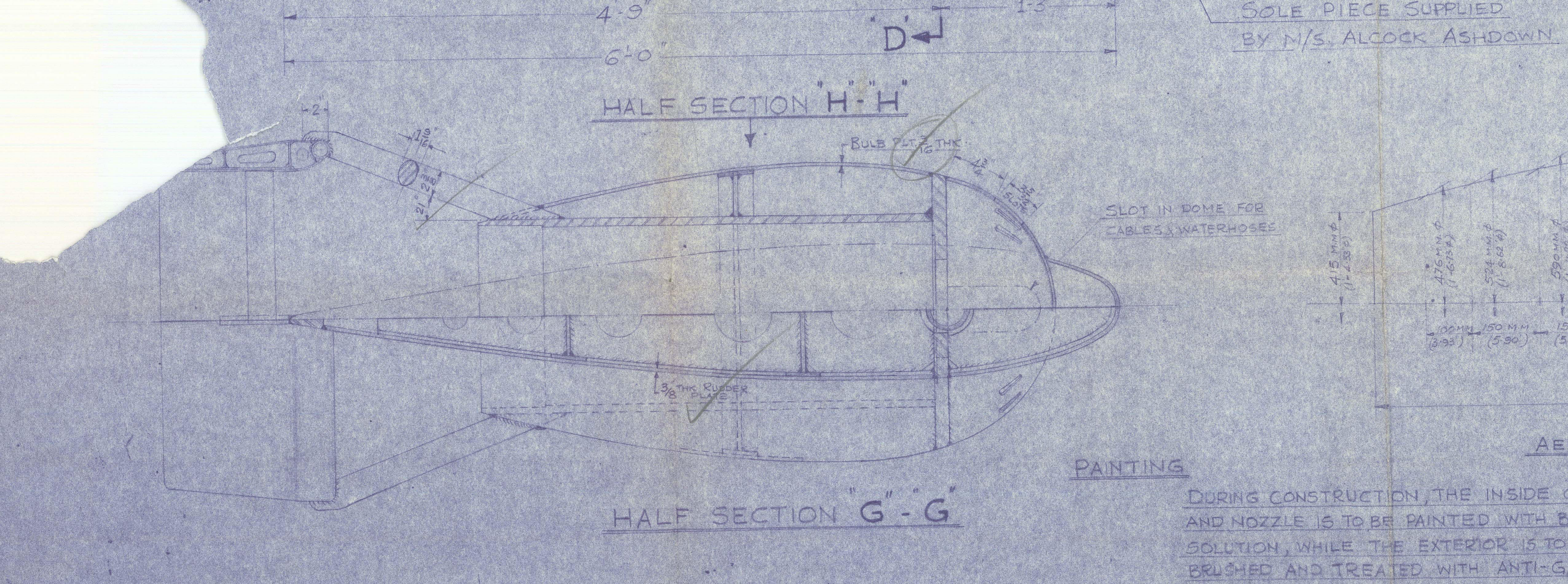
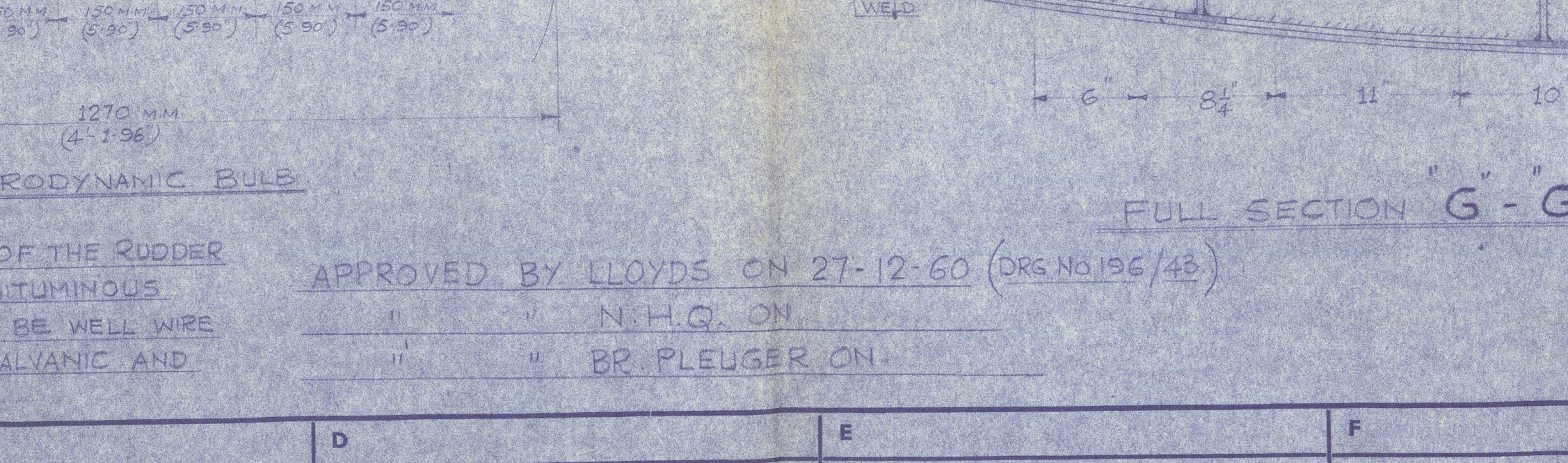
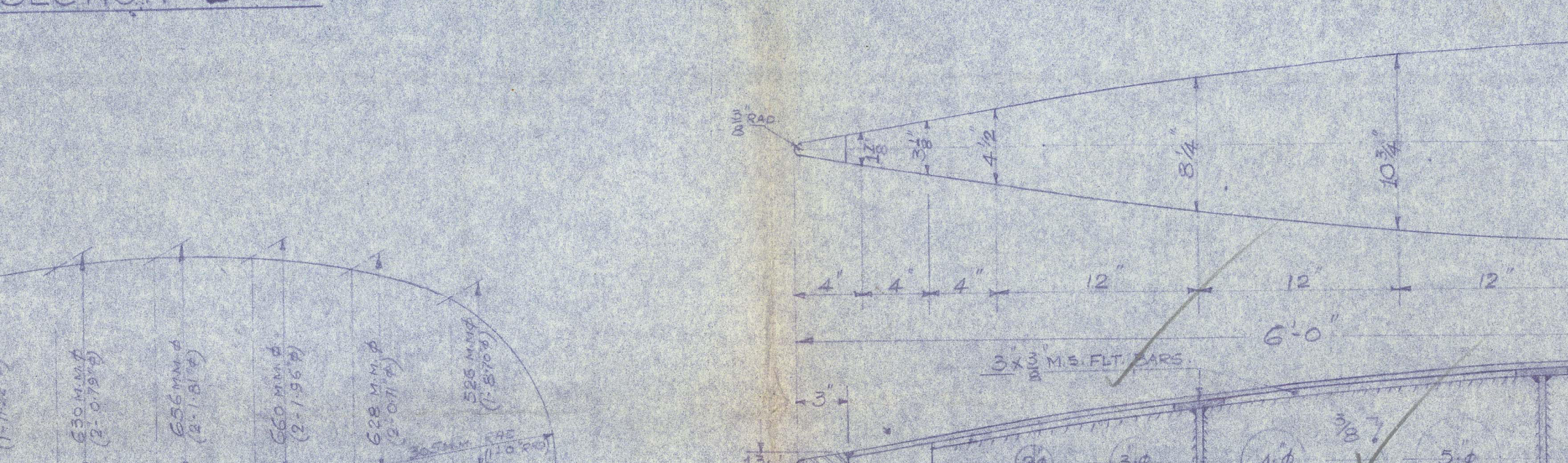
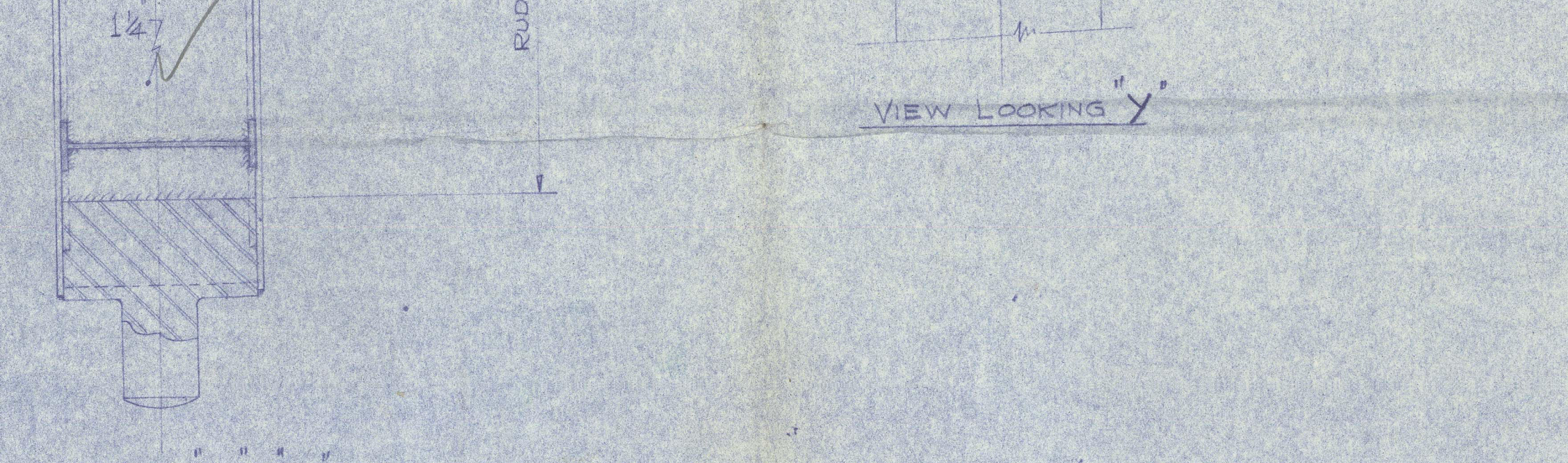
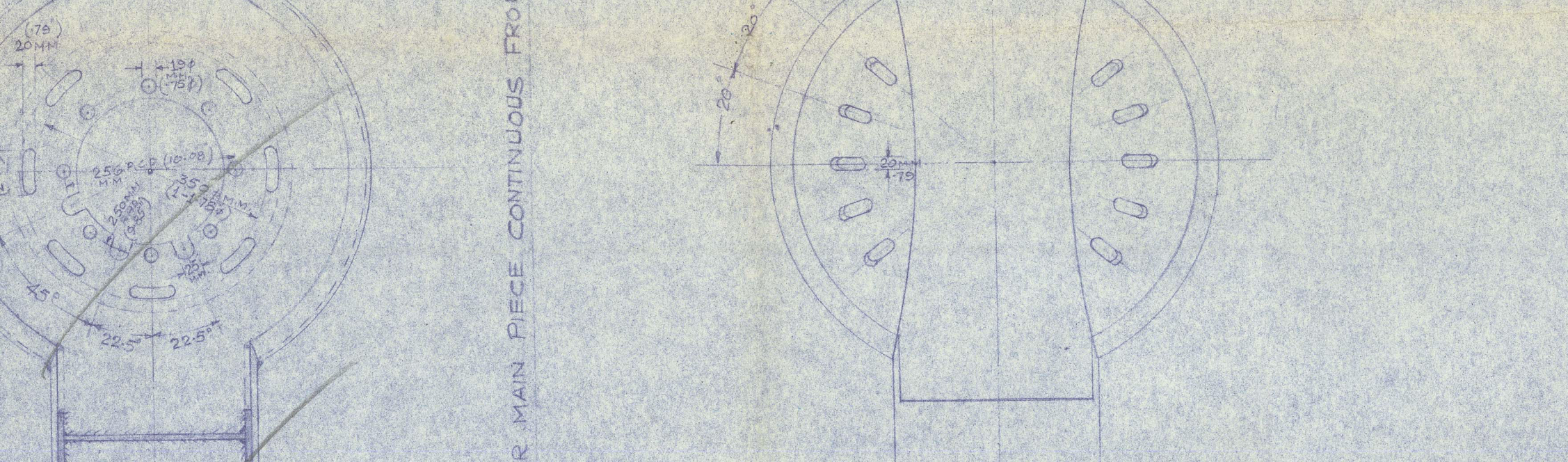
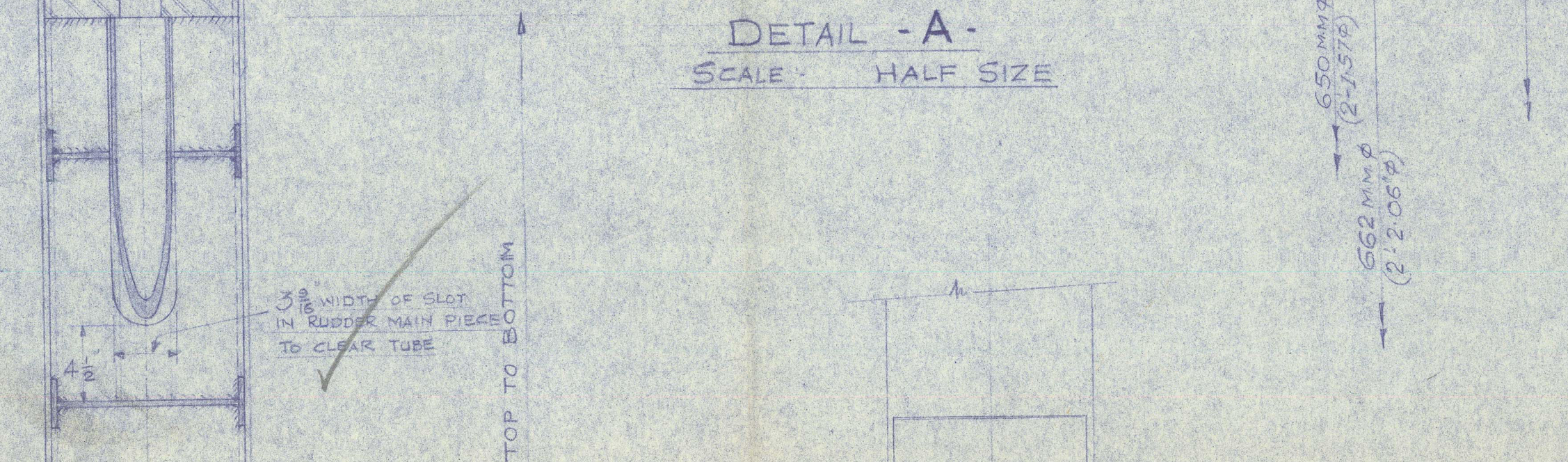
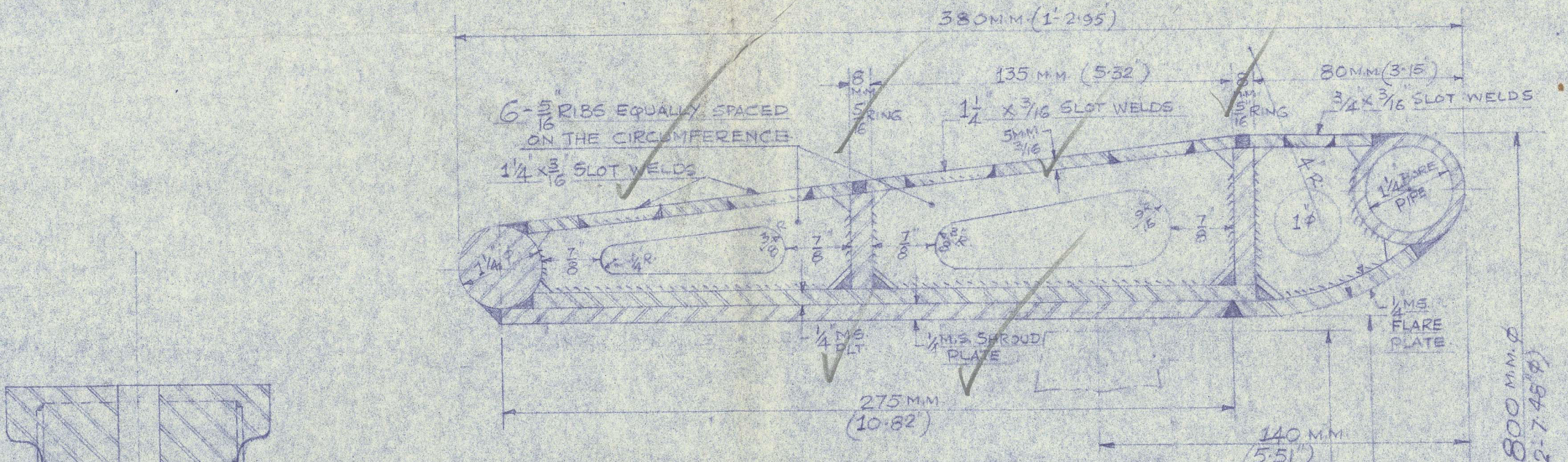
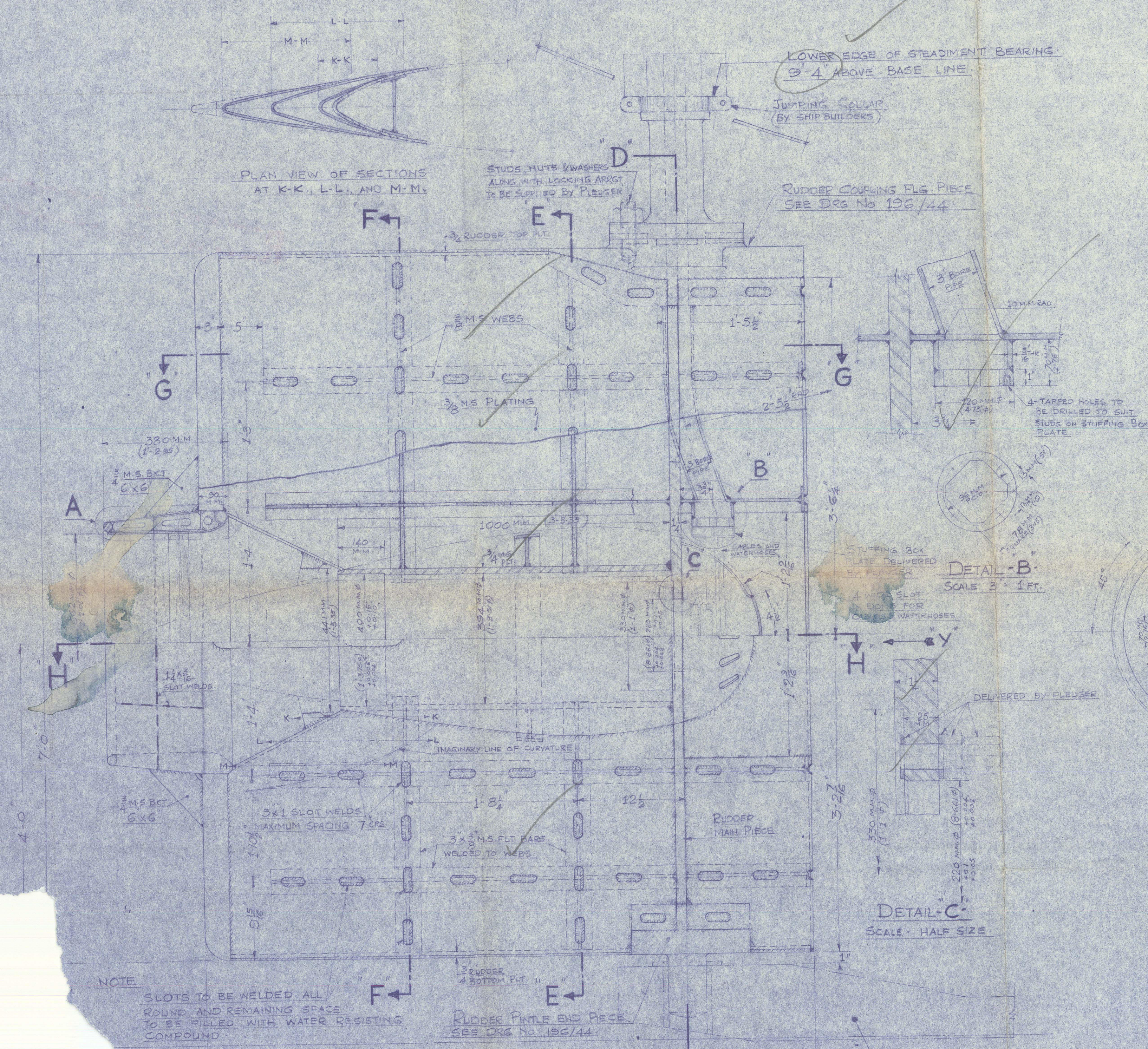




## NOTES FOR M/S PLEUGER (GERMANY)

1. PLEASE INDICATE THE POSITIONS OF DRAIN PLUG AND LIFTING HOLES ON RUDDER IF NORMALLY FITTED.
2. PLEASE ADVISE IF THE RUDDER IS TO BE FITTED WITH A BUOYANCY MATERIAL SUCH AS CORK.
3. PLEASE NOTE, THE NOZZLE INTERCHANGEABLE SHROUD PLATE IS NOT COATED WITH POLYESTER AS THE MATERIAL IS NOT AVAILABLE LOCALLY. PLEASE CONFIRM THIS IS IN ORDER.



A x D = 85.54  
SPEED = 10 KNOTS (APPROX.)  
DIA. OF RUDDER HEAD = 5.11" (SOLID)  
DIA. OF RUDDER HEAD WITH 2 1/2" BORE = 5.4"  
DIA. IN WAY OF AND BELOW NECK BEARING = 6 1/4" HOLLOW

AREA OF RUDDER BELOW A HORIZONTAL LINE HALF WAY BETWEEN THE PINTLE AND THE TOP OF THE RUDDER = 22.15 sq ft

DIA. OF PINTLE = 4 1/2"  
LENGTH OF PINTLE = 5 1/2"  
A.E.G. ROTARY VANE STEERING TORQUE = 4 METRIC TONS

NOTE: SINCE PLY. TO BE IN HALVES IF NOT POSSIBLE IN ONE PIECE

MAZAGON DOCK LTD. DRAWING OFFICE 16 MAY 1961 BOMBAY-10

NOTE: 1. FOR RUDDER COUPLING FLANGE AND PINTLE PIECE SEE DRG. NO. 196/44  
2. FOR JUMPING COLLAR, PINTLE BUSH, STEADIMENT BEARING, STUFFING BOX AND CLOSING PLT. AT HULL ENTRY SEE SEPARATE DRG.

QUOT. NO.	REF. NO.	JOB NO.	REVISIONS	A	B	C	D	E	F	SCALE 1 1/2" = 1 FOOT	DATE 15-1-61
NAVAL HEADQUARTERS		500 TON WATER BOAT								TR.	CH.
CLIENT		WORK								NO. OF SHEETS	SHEET NO.
										DRAWING NO.	196/43 A

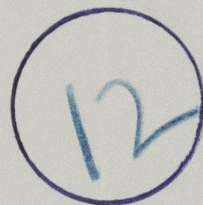


"VARIDA"



RETAINED RECORDS

RECORDS DEPT.  
LONDON.



MAZAGON DOCK  
YARD No 196

DETAIL OF



RUDDER

© 2021

Lloyd's Register  
Foundation